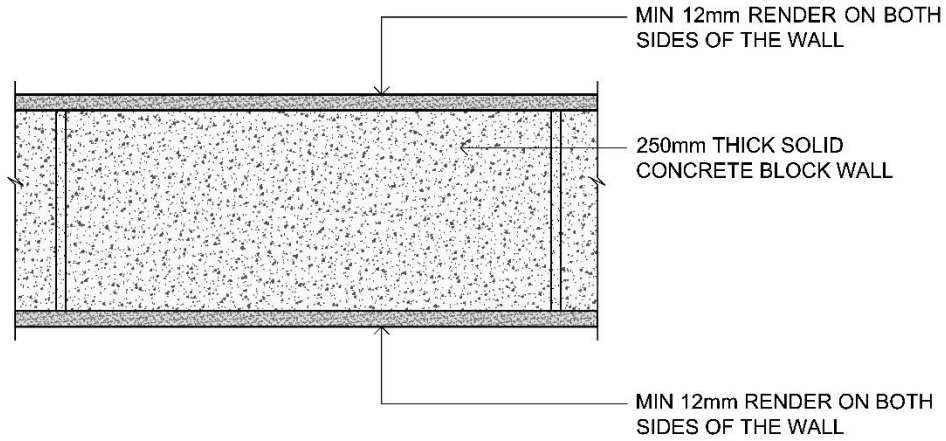


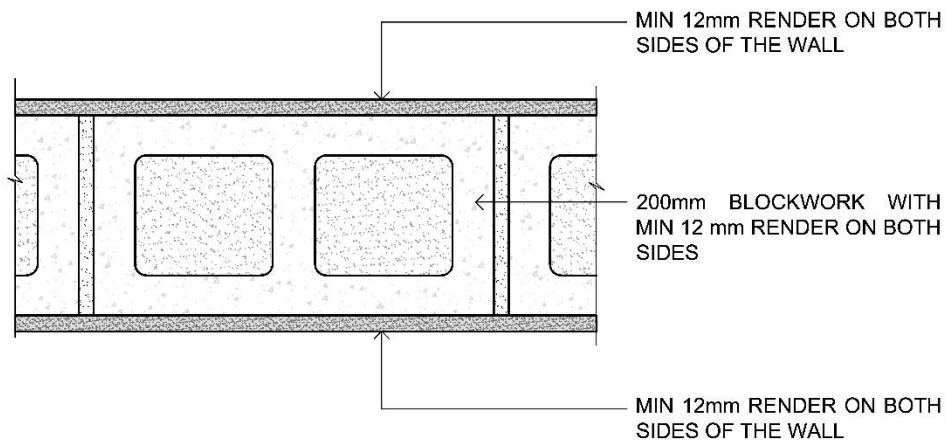
16 Appendix C - Examples of Wall Constructions

Refer below typical examples of wall configurations and their acoustic insulation rating .

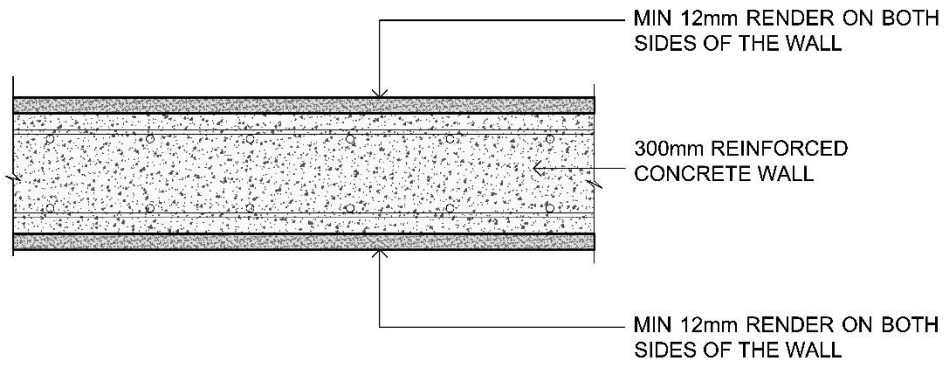
Masonry wall configurations:



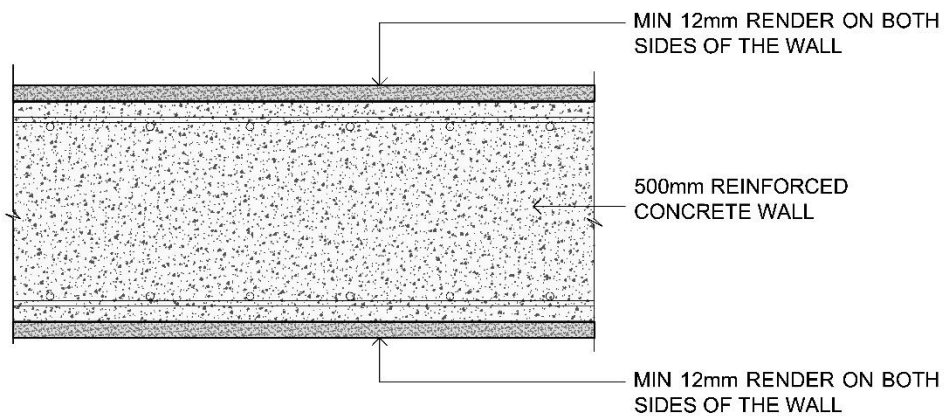
Wall A - R_w / STC 60, 250 mm solid concrete block wall (surface mass > 490 kg/m²) painted and sealed with 12 mm render on both sides (plan view - NTS)



Wall B - R_w / STC 60 / D_{nTw} , + C_{tr} 45, 215mm blockwork, 1840kg/m³ with 13mm lightweight plaster on either side (plan view - NTS)

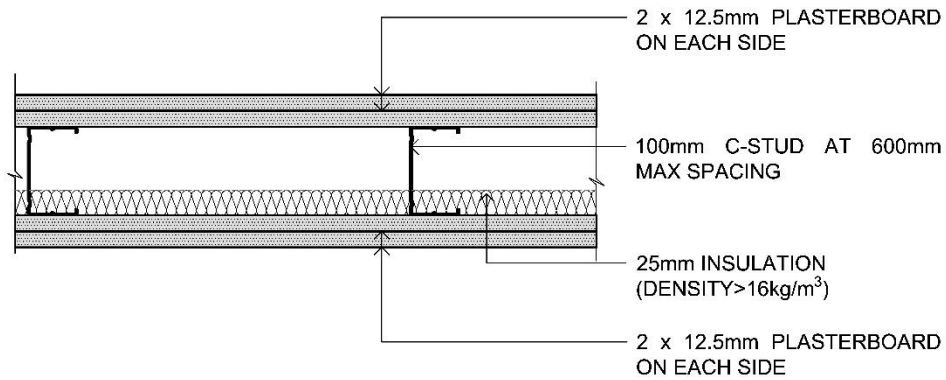


Wall C - R_w / STC 60, 300mm dense reinforced concrete (plan view - NTS)

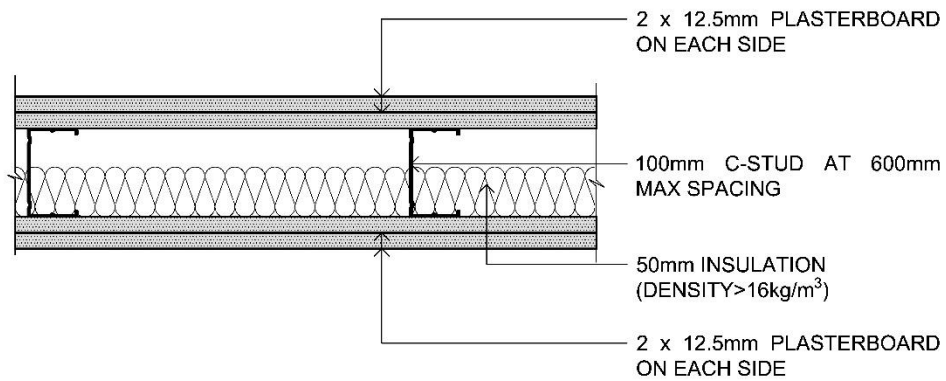


Wall D - R_w / STC 65, 500mm dense reinforced concrete (plan view - NTS)

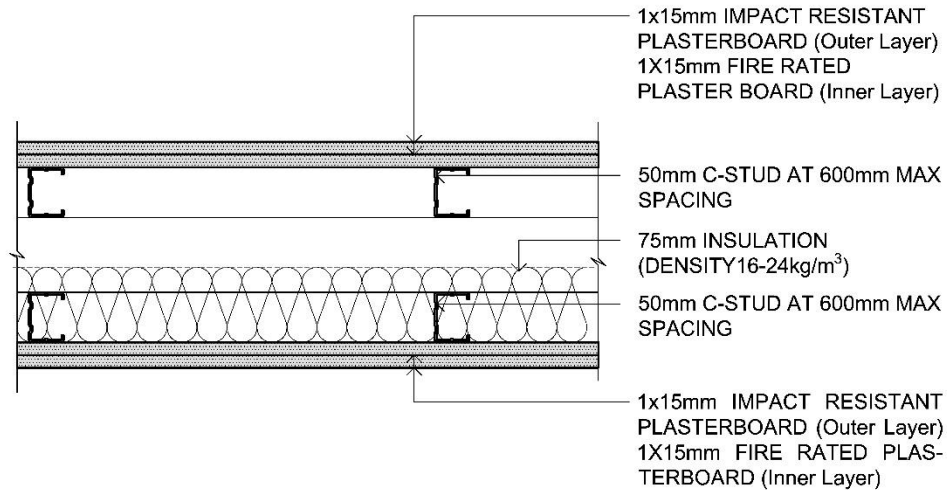
Drywall configurations:



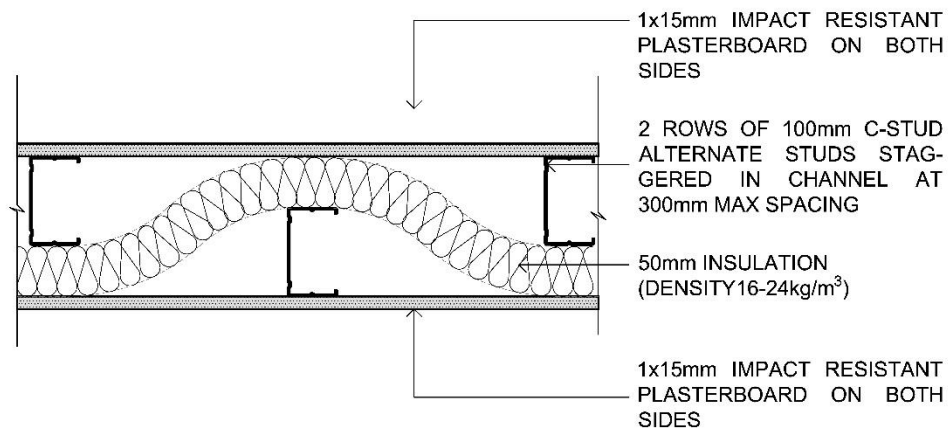
Wall E - R_w / STC 50, 2 x 12.5 mm plasterboards each side, 100mm studs at 600 mm centers, 25 mm insulation in the cavity (plan view - NTS)



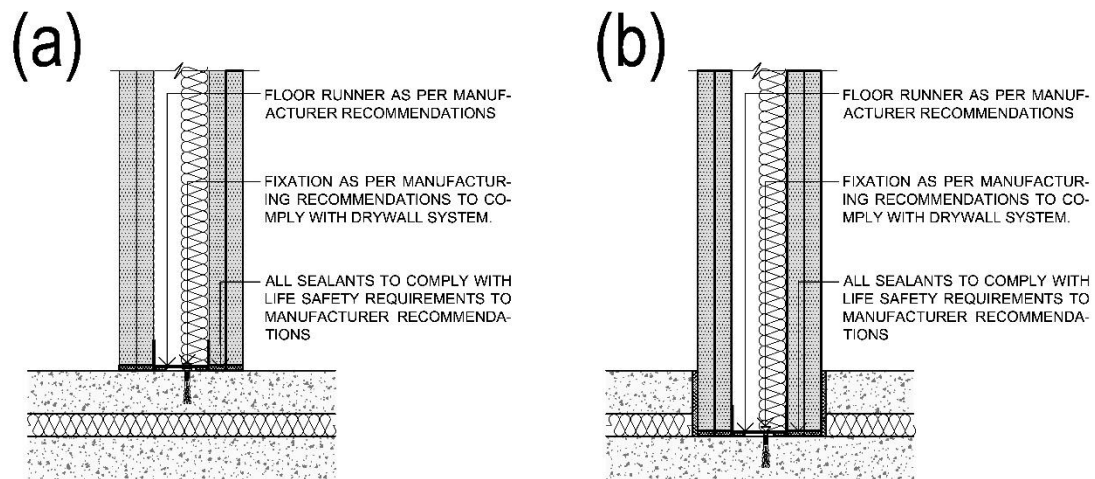
Wall F - R_w / STC 52, 2 x 12.5 mm plasterboards each side, 100mm studs at 600 mm centers, 50 mm insulation in the cavity (plan view - NTS)



Wall G - R_w / STC 65 , 1 x 15mm impact resistant plasterboard + 1 x 15mm fire rated plasterboard on each side of # 2 separate 50mm C studs, 75mm insulation in cavity (16 – 24 kg/m³), (plan view - NTS)



Wall H - R_w / STC 54, 15mm dense plasterboard on either end with two rows of 100MM C-Studs alternate studs staggered in the channel at 300mm centres and 50mm mineral wool insulation in the cavity (16 – 24 kg/m³), (plan view - NTS)



Architectural Detail 1 - Junction detail between floating floor and drywall installation - Building Option (b) is advised-(section view / NTS)