

iHFG Standard Components

Room Layout Sheet

RLS Room Code

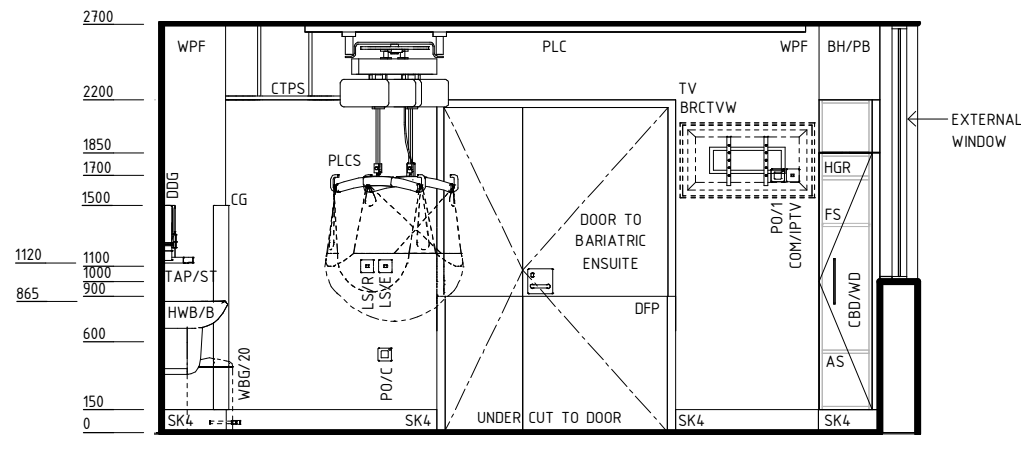
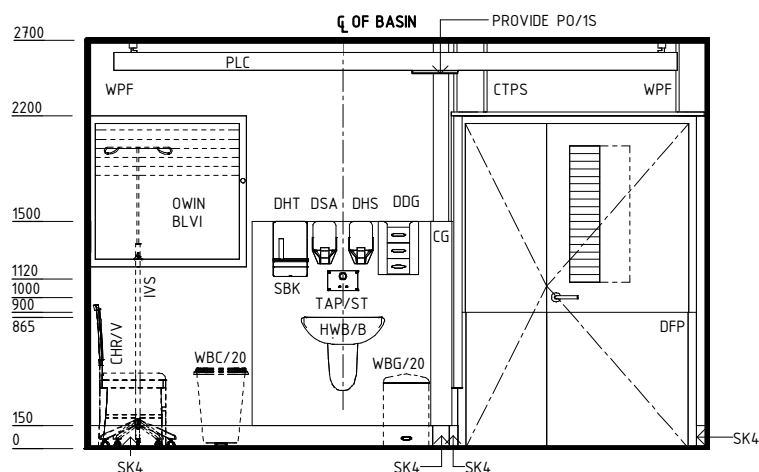
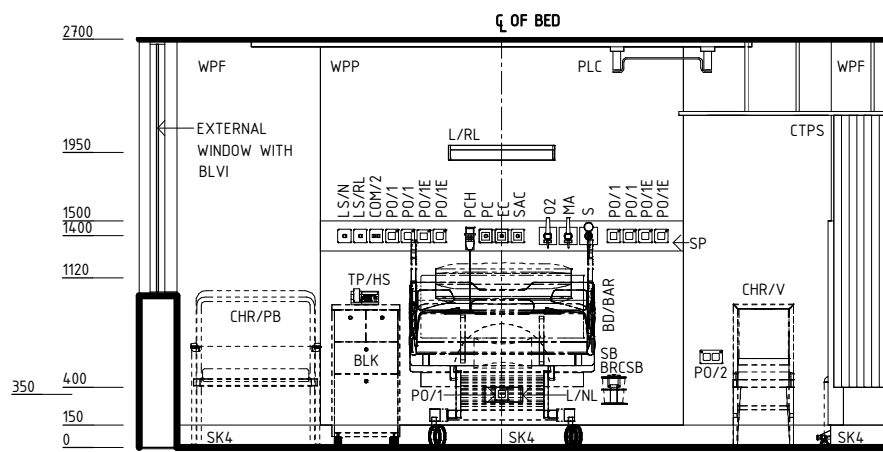
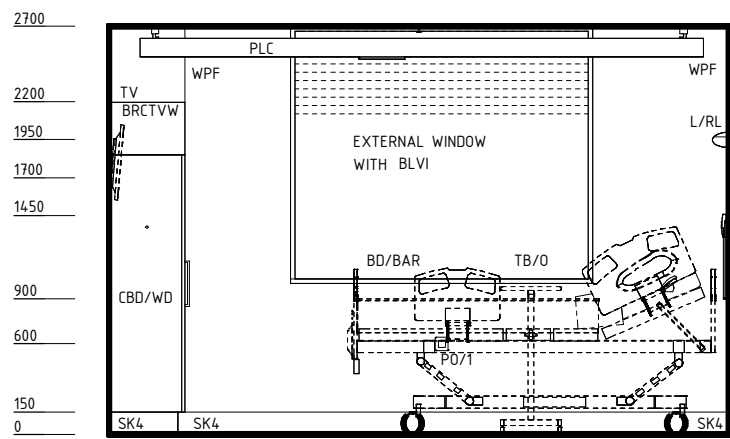
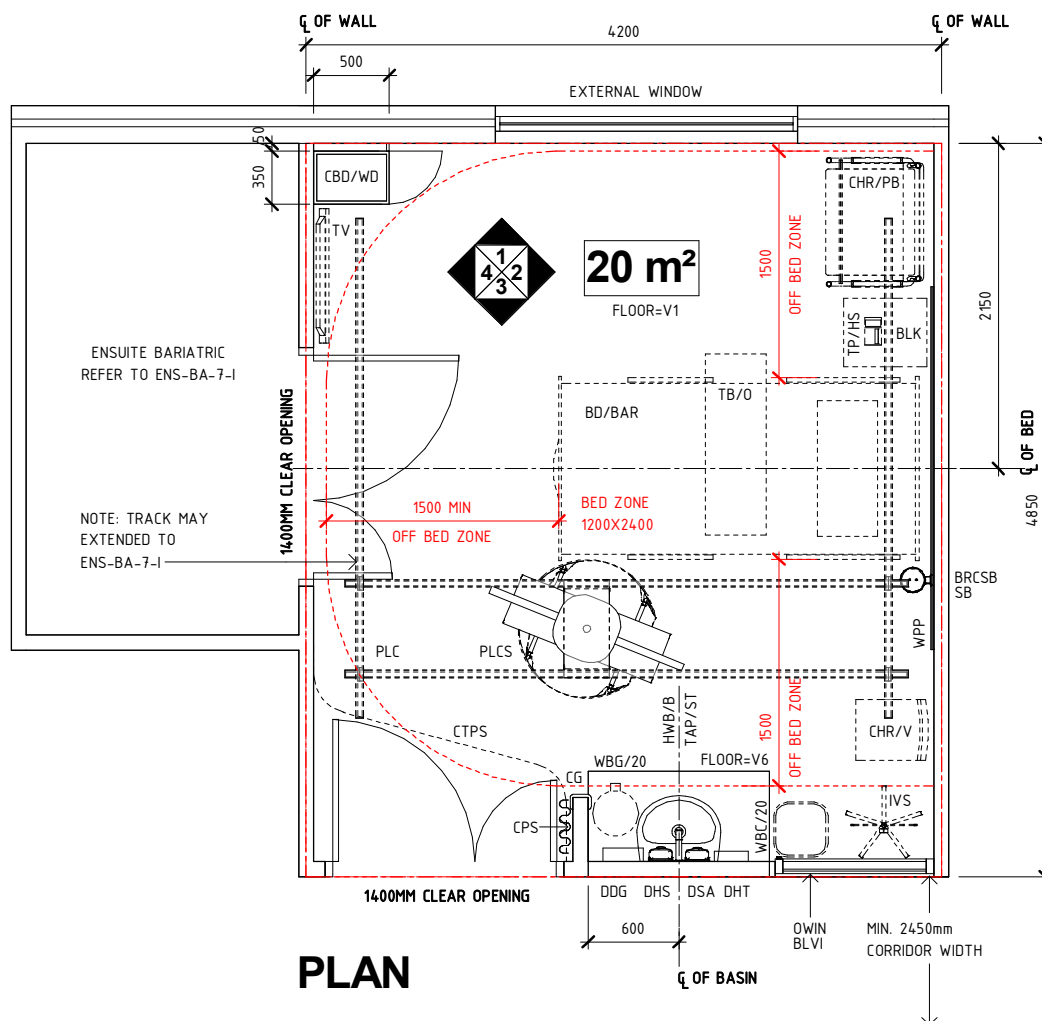
1br-ba-20-i

RDS Room Code

1br-ba-20-i

Room Name **1 Bed Room – Bariatric, 20m²**

- | | | | |
|----------|---|--------|---|
| AS | ADJUSTABLE SHELF | TP/HS | TELEPHONE - HANDSET, STANDARD |
| BD/BAR | BED - BARIATRIC, ELECTRIC | TV | TELEVISION |
| BH/PB | BULKHEAD - PLASTERBOARD, PAINT FINISH | V1 | VINYL FLOORING, STANDARD SLIP RESISTANT |
| BLK | LOCKER - BEDSIDE | V6 | VINYL FLOORING, NON SLIP - TEXTURED |
| BLVI | BLIND - VENETIAN, INTEGRAL | WBC/20 | WASTE BIN - CLINICAL, 20 LITRE |
| BRCSB | BRACKET - SUCTION BOTTLE | WBG/20 | WASTE BIN - GENERAL, 20 LITRE |
| BRCTVW | BRACKET - TELEVISION, WALL MOUNTED | WPF | WALL PAINT FINISH |
| CBD/WD | CUPBOARD - WARDROBE | WPP | WALL PROTECTION PANEL |
| CG | CORNER GUARD | | |
| CHR/PB | CHAIR - PATIENT, BARIATRIC | | |
| CHR/V | CHAIR - VISITOR | | |
| COM/2 | COMMUNICATION OUTLET - DOUBLE | | |
| COM/IPTV | COMMUNICATION OUTLET - INTERNET PROTOCOL TELEVISION | | |
| CPS | CURTAIN - PRIVACY SCREEN | | |
| CTPS | CURTAIN TRACK - PRIVACY SCREEN | | |
| DDG | DISPENSER - DISPOSABLE GLOVES | | |
| DFP | DOOR AND DOOR FRAME PROTECTION | | |
| DHS | DISPENSER - HAND SANITISER | | |
| DHT | DISPENSER - PAPER HAND TOWEL | | |
| DSA | DISPENSER - SOAP, ANTISEPTIC | | |
| EC | EMERGENCY CALL | | |
| FS | FIXED SHELF | | |
| HGR | HANGING RAIL | | |
| HWB/B | HAND WASH BASIN - TYPE 'B' | | |
| IVS | IV STAND - MOBILE | | |
| L/NL | LIGHT - NIGHT LIGHT | | |
| L/RL | LIGHT - READING LIGHT | | |
| LS/E | LIGHT SWITCH - ENSUITE | | |
| LS/N | LIGHT SWITCH - NIGHT LIGHT | | |
| LS/R | LIGHT SWITCH - ROOM | | |
| LS/RL | LIGHT SWITCH - READING LIGHT | | |
| MA | MEDICAL AIR | | |
| O2 | OXYGEN | | |
| OWIN | OBSERVATION WINDOW | | |
| PC | PATIENT CALL | | |
| PCH | PATIENT CALL HANDSET | | |
| PLC | PATIENT LIFTER - CEILING MOUNTED | | |
| PLCS | PATIENT LIFTER - CEILING MOUNTED, SLING | | |
| PO/1 | POWER OUTLET - SINGLE | | |
| PO/E | POWER OUTLET - EMERGENCY, SINGLE | | |
| PO/2 | POWER OUTLET - DOUBLE | | |
| PO/C | POWER OUTLET - CLEANER'S | | |
| S | SUCTION | | |
| SAC | STAFF ASSIST CALL | | |
| SB | SUCTION BOTTLE | | |
| SBK | SPLASHBACK | | |
| SK4 | FLOOR VINYL COVERED SKIRTING | | |
| SP | SERVICES PANEL | | |
| TAP/ST | TAPWARE - SENSOR TAP | | |
| TB/O | TABLE - OVERBED | | |



REV	DESCRIPTION	DATE	BY	REV	DESCRIPTION	DATE	BY	COMPATIBILITY
1	FIRST ISSUE	26.06.15	NB					
2	GENERAL REVISIONS	25.05.23	AM					

iHFG Standard Components

Room Layout Sheet

RLS Room Code

1br-ba-20-i

RDS Room Code

1br-ba-20-i

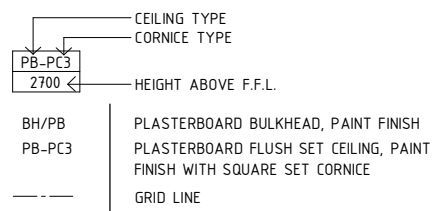
Room Name | 1 Bed Room – Bariatric, 20m²

GENERAL NOTES:

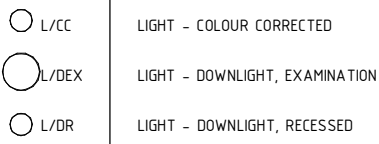
THIS DRAWING TO BE READ IN CONJUNCTION WITH R.D.S. (ROOM DATA SHEETS) WHICH TAKES PRECEDENCE.

ALL SERVICES INDICATED ARE INDICATIVE AND SUBJECT TO DETAILED PROJECT SPECIFIC ENGINEERING DESIGN.

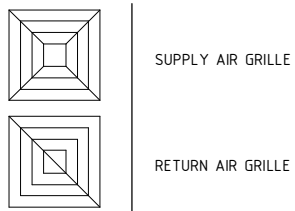
CEILING LEGEND:



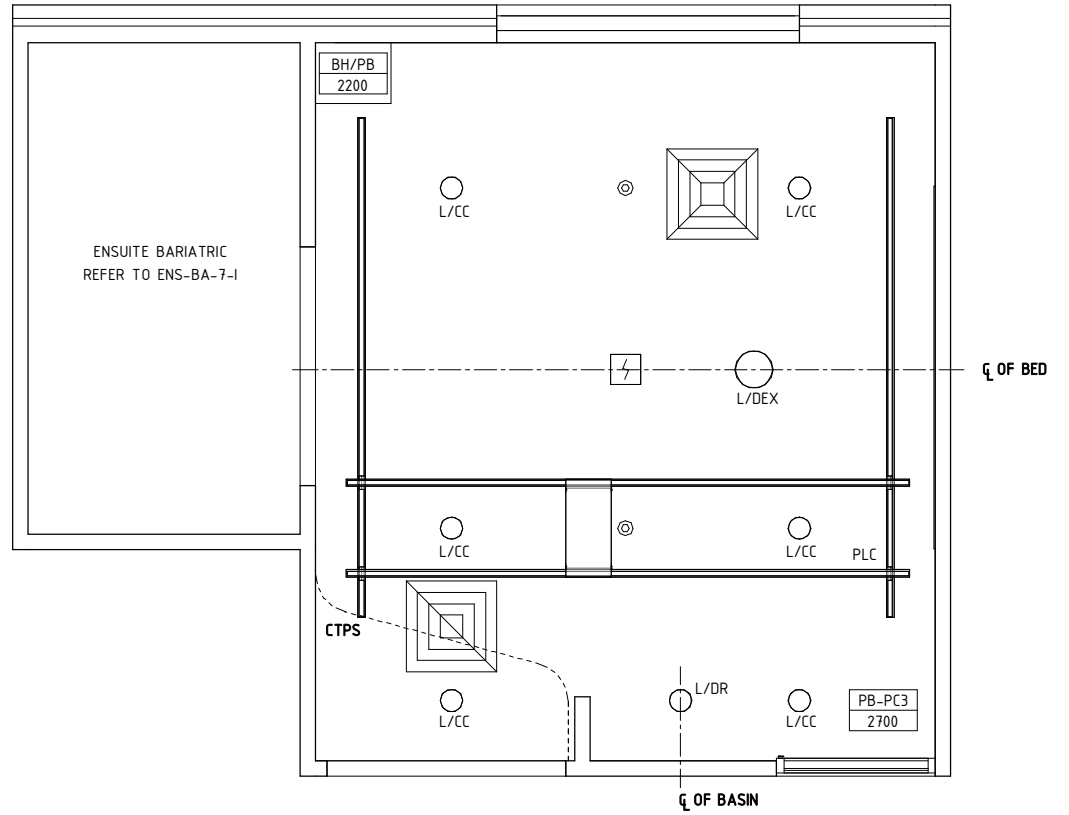
ELECTRICAL LEGEND:



MECHANICAL LEGEND:



FIRE SERVICES LEGEND:



REFLECTED CEILING PLAN

REV	DESCRIPTION	DATE	BY	REV	DESCRIPTION	DATE	BY	COMPATIBILITY
1	FIRST ISSUE	26.06.15	NB					iHFG
2	GENERAL REVISIONS	25.05.23	AM					

iHFG Standard Components

Room Layout Sheet

RLS Room Code

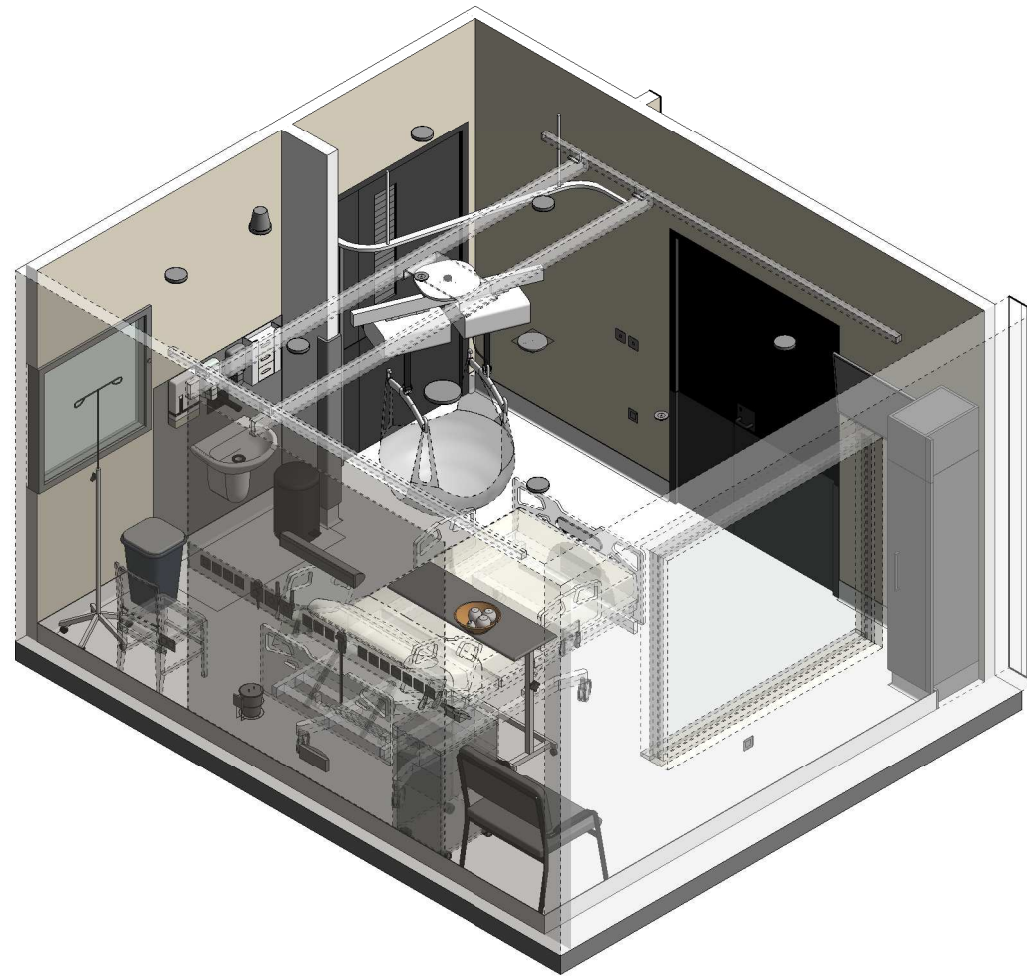
1br-ba-20-i

RDS Room Code

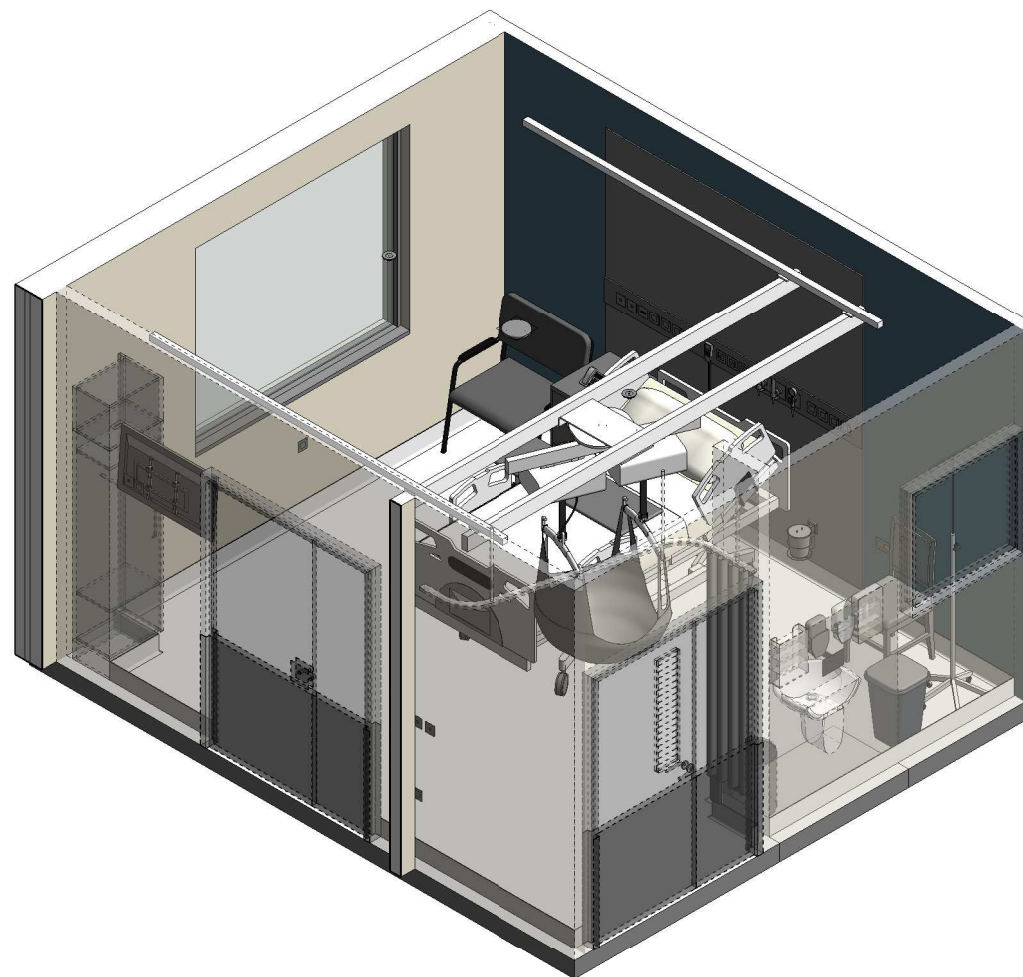
1br-ba-20-i

Room Name

1 Bed Room – Bariatric, 20m²



ISOMETRIC VIEW 01



ISOMETRIC VIEW 02

REV	DESCRIPTION	DATE	BY	REV	DESCRIPTION	DATE	BY	COMPATIBILITY
1	FIRST ISSUE	26.06.15	NB					
2	GENERAL REVISIONS	25.05.23	AM					



International Health Facility Guidelines at:
www.healthdesign.com.au/iHFG
 Editable version of Standard Components on
 Health Facility Briefing System (HFBS) at:
www.healthdesign.com.au ©TAHPI



DESIGNED	APPROVED	DATE	SCALE(S)	SHEET
AM	SA	25.05.23		3 OF 3
REVIT FILE NAME		PAPER DRAWING ID		ISSUE
1br-ba-20-i		1br-ba-20-i-3		2

This document is for advisory purpose only