

iHFG Standard Components

Room Layout Sheet

RLS Room Code

1br-ccu-20-i

RDS Room Code

1br-ccu-20-i

Room Name

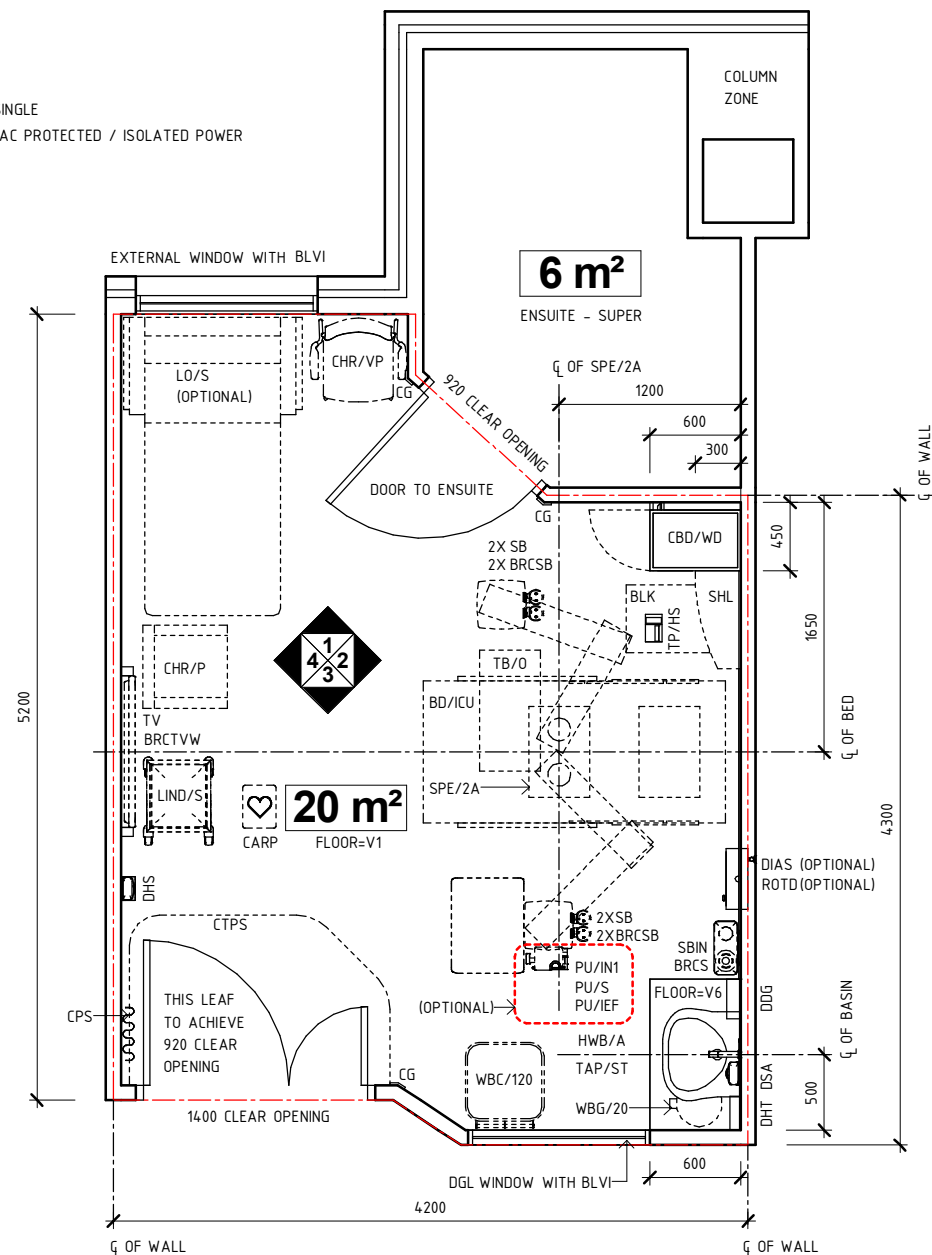
1 Bed Room - Special, CCU, 20m2

| | |
|---------|--|
| AS | ADJUSTABLE SHELF |
| BD/ICU | BED - INTENSIVE CARE UNIT, ELECTRIC |
| BH/PB | BULKHEAD - PLASTERBOARD, PAINT FINISH |
| BLK | LOCKER - BEDSIDE |
| BLVI | BLIND - VENETIAN, INTEGRAL |
| BRCM | BRACKET - MONITOR |
| BRCS | BRACKET - SHARPS |
| BRCSB | BRACKET - SUCTION BOTTLE |
| BRCTVW | BRACKET - TELEVISION, WALL MOUNTED |
| CARP | CARDIAC PROTECTED |
| CBD/WD | CUPBOARD - WARDROBE |
| CG | CORNER GUARD |
| CHR/P | CHAIR - PATIENT |
| CHR/VP | CHAIR - VISITOR, PATIENT |
| COM/1 | COMMUNICATION OUTLET - SINGLE |
| CPS | CURTAIN - PRIVACY SCREEN |
| CTPS | CURTAIN TRACK - PRIVACY SCREEN |
| DDG | DISPENSER - DISPOSABLE GLOVES |
| DFP | DOOR AND DOOR FRAME PROTECTION |
| DGL | DOUBLE GLAZED |
| DHS | DISPENSER - HAND SANITISER |
| DHT | DISPENSER - PAPER HAND TOWEL |
| DIAS | DIALYSIS STATION |
| DSA | DISPENSER - SOAP, ANTISEPTIC |
| HWB/A | HAND WASH BASIN - TYPE 'A' |
| IVP | IV POLE |
| L/NL | LIGHT - NIGHT LIGHT |
| L/RL | LIGHT - READING LIGHT |
| LIND/S | LINEN CARRIER - DIRTY, SINGLE |
| LO/S | LOUNGE - SOFA BED |
| LS/3 | LIGHT SWITCH - 3 GANG |
| LS/E | LIGHT SWITCH - ENSUITE |
| MON/PCN | MONITOR - PHYSIOLOGIC, CRITICAL CARE, NEONATAL |
| PCH | PATIENT CALL HANDSET |
| PO/1 | POWER OUTLET - SINGLE |
| PO/2E | POWER OUTLET - EMERGENCY, DOUBLE |
| PU/IEF | PUMP - INFUSION, ENTERAL FEEDING |
| PU/IN1 | PUMP - INFUSION, SINGLE |
| PU/S | PUMP - SYRINGE |
| ROTD | REVERSE OSMOSIS WATER OUTLET & TUNDISH DRAIN |
| SB | SUCTION BOTTLE |
| SBIN | SHARPS BIN |
| SBK | SPLASHBACK |
| SHL | SHELF - LAMINATED |
| SK4 | FLOOR VINYL COVERED SKIRTING |
| SPE/2A | SERVICES PENDANT - 2 ARM, HEIGHT ADJUSTABLE |
| TAP/ST | TAPWARE - SENSOR TAP |
| TB/O | TABLE - OVERBED |
| TP/HS | TELEPHONE - HANDSET, STANDARD |
| TV | TELEVISION |
| V1 | VINYL FLOORING, STANDARD SLIP RESISTANT |
| V6 | VINYL FLOORING, NON SLIP - TEXTURED |
| WBC/120 | WASTE BIN - CLINICAL, 120 LITRE |
| WBG/20 | WASTE BIN - GENERAL, 20 LITRE |
| WPF | WALL PAINT FINISH |
| WPP | WALL PROTECTION PANEL |

| | |
|-------|---|
| COM/2 | COMMUNICATION OUTLET - DOUBLE |
| EC | EMERGENCY CALL |
| MA | MEDICAL AIR |
| O2 | OXYGEN |
| PC | PATIENT CALL |
| PO/1E | POWER OUTLET - EMERGENCY, SINGLE |
| PO/1I | POWER OUTLET - SINGLE, CARDIAC PROTECTED / ISOLATED POWER |
| S | SUCTION |
| SAC | STAFF ASSIST CALL |
| TA | TOOL AIR |

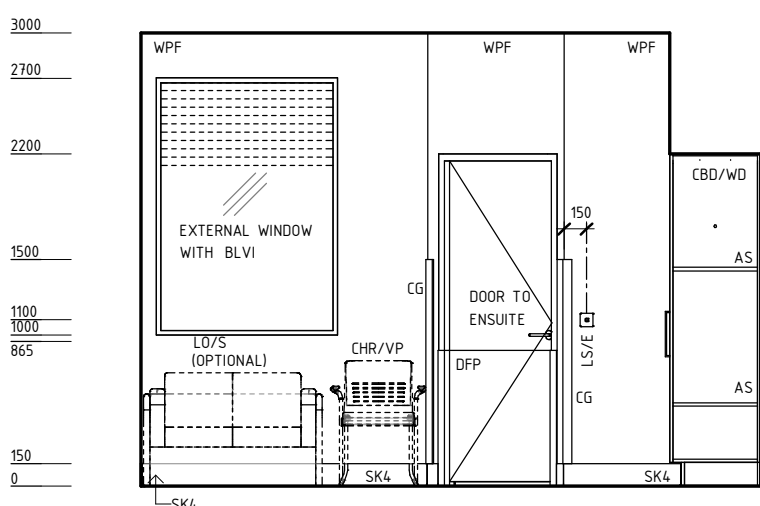
SUPPLY UNIT - SPE/2A

| |
|-----------------------------------|
| 2 X COM/2 (1 PER ARM) |
| 1 X EC |
| 2 X MA (1 PER ARM) |
| 4 X O2 (2 PER ARM) |
| 1 X PC |
| 6 X PO/1E (3 PER ARM) |
| 8 X PO/1I (4 PER ARM) |
| 4 X S (2 PER ARM) |
| 1 X SAC |
| 1 X TA / DC (FOR PENDANT BRACKES) |

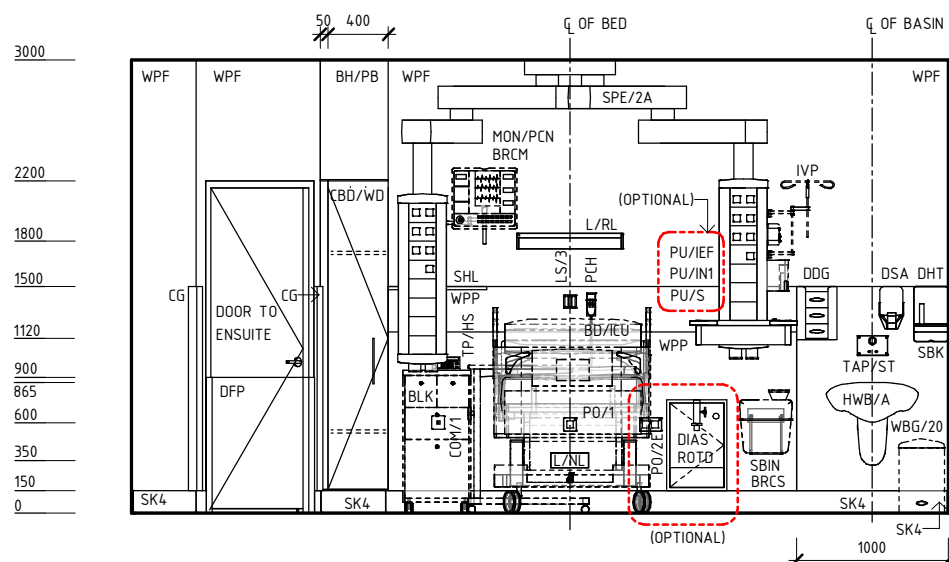


PLAN

NOTE:
THE SUPPLY UNIT IS OPTIONAL AND CAN BE REPLACED WITH WALL SERVICE PANEL DEPENDING ON THE OPERATIONAL REQUIREMENT.



ELEVATION 1



ELEVATION 2

| REV | DESCRIPTION | DATE | BY | REV | DESCRIPTION | DATE | BY | COMPATIBILITY |
|-----|------------------|----------|----|-----|-------------|------|----|---------------|
| 1 | FIRST ISSUE | 24.10.10 | AL | | | | | |
| 2 | GENERAL REVISION | 13.04.11 | CT | | | | | |
| 3 | GENERAL REVISION | 27.01.23 | SS | | | | | |

| | | | | | |
|-----------------|----------|------------------|----------|----------|--------|
| | DESIGNED | APPROVED | DATE | SCALE(S) | SHEET |
| | SS | RH | 27.01.23 | 1 : 50 | 1 OF 4 |
| REVIT FILE NAME | | PAPER DRAWING ID | | ISSUE | |
| 1br-ccu-20-i | | 1br-ccu-20-i-1 | | 3 | |

iHFG Standard Components

Room Layout Sheet

RLS Room Code

1br-ccu-20-i

RDS Room Code

1br-ccu-20-i

Room Name

1 Bed Room - Special, CCU, 20m2

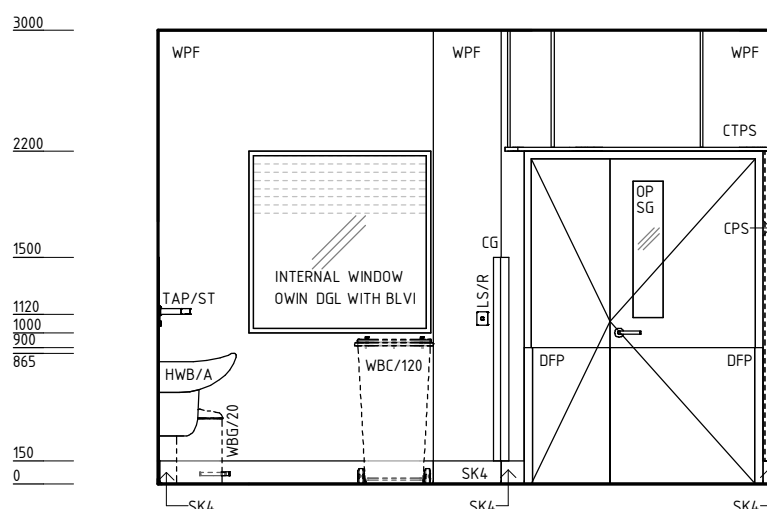
| | |
|----------|---|
| BH/LM | BULKHEAD - LAMINATED |
| BLVI | BLIND - VENETIAN, INTEGRAL |
| BRCTVW | BRACKET - TELEVISION, WALL MOUNTED |
| CG | CORNER GUARD |
| CHR/P | CHAIR - PATIENT |
| COM/IPTV | COMMUNICATION OUTLET - INTERNET PROTOCOL TELEVISION |
| CPS | CURTAIN - PRIVACY SCREEN |
| CTPS | CURTAIN TRACK - PRIVACY SCREEN |
| DFP | DOOR AND DOOR FRAME PROTECTION |
| DGL | DOUBLE GLAZED |
| DHS | DISPENSER - HAND SANITISER |
| HWB/A | HAND WASH BASIN - TYPE 'A' |
| LIND/S | LINEN CARRIER - DIRTY, SINGLE |
| LO/S | LOUNGE - SOFA BED |
| LS/R | LIGHT SWITCH - ROOM |
| OP | OBSERVATION PANEL |
| OWIN | OBSERVATION WINDOW |
| PO/1 | POWER OUTLET - SINGLE |
| PO/C | POWER OUTLET - CLEANER'S |
| SG | SAFETY GLASS |
| SK4 | FLOOR VINYL COVERED SKIRTING |
| TAP/ST | TAPWARE - SENSOR TAP |
| TV | TELEVISION |
| WBC/120 | WASTE BIN - CLINICAL, 120 LITRE |
| WBG/20 | WASTE BIN - GENERAL, 20 LITRE |
| WP/L | WALL PANEL, LAMINATE |
| WPF | WALL PAINT FINISH |

| | |
|-------|---|
| COM/2 | COMMUNICATION OUTLET - DOUBLE |
| EC | EMERGENCY CALL |
| MA | MEDICAL AIR |
| O2 | OXYGEN |
| PC | PATIENT CALL |
| PO/1E | POWER OUTLET - EMERGENCY, SINGLE |
| PO/1I | POWER OUTLET - SINGLE, CARDIAC PROTECTED / ISOLATED POWER |
| S | SUCTION |
| SAC | STAFF ASSIST CALL |
| TA | TOOL AIR |

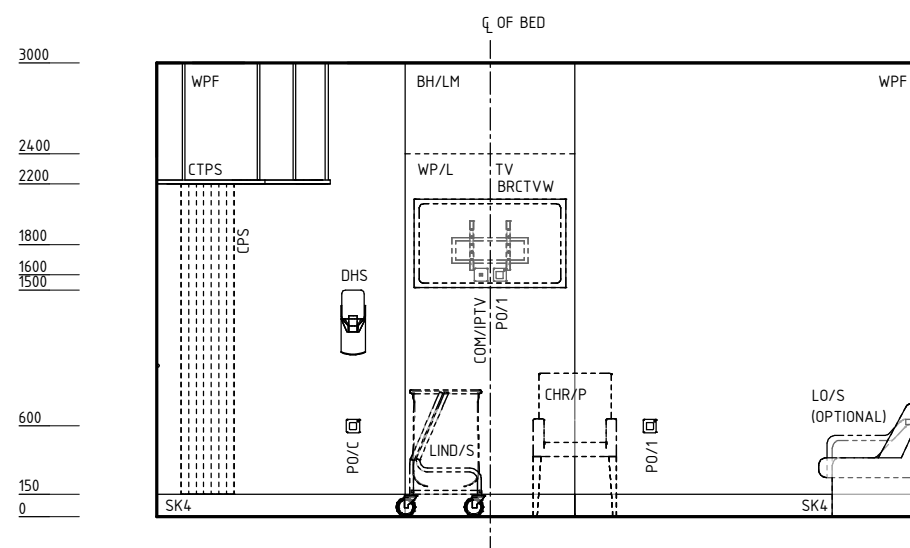
SUPPLY UNIT - SPE/2A

- 2 X COM/2 (1 PER ARM)
- 1 X EC
- 2 X MA (1 PER ARM)
- 4 X O2 (2 PER ARM)
- 1 X PC
- 6 X PO/1E (3 PER ARM)
- 8 X PO/1I (4 PER ARM)
- 4 X S (2 PER ARM)
- 1 X SAC
- 1 X TA/DC (FOR PENDANT BRAKES)

NOTE:
THE SUPPLY UNIT IS OPTIONAL AND CAN BE REPLACED WITH WALL SERVICE PANEL DEPENDING ON THE OPERATIONAL REQUIREMENT.



ELEVATION 3



ELEVATION 4

| REV | DESCRIPTION | DATE | BY | REV | DESCRIPTION | DATE | BY | COMPATIBILITY |
|-----|------------------|----------|----|-----|-------------|------|----|---------------|
| 1 | FIRST ISSUE | 24.10.10 | AL | | | | | |
| 2 | GENERAL REVISION | 13.04.11 | CT | | | | | |
| 3 | GENERAL REVISION | 27.01.23 | SS | | | | | |



International Health Facility Guidelines at:
www.healthdesign.com.au/iHFG
Editable version of Standard Components on
Health Facility Briefing System (HFBS) at:
www.healthdesign.com.au@TAHPI



| DESIGNED | APPROVED | DATE | SCALE(S) | SHEET |
|-----------------|----------|------------------|----------|--------|
| SS | RH | 27.01.23 | 1 : 50 | 2 OF 4 |
| REVIT FILE NAME | | PAPER DRAWING ID | | ISSUE |
| 1br-ccu-20-i | | 1br-ccu-20-i-2 | | 3 |

iHFG Standard Components

Room Layout Sheet

RLS Room Code

1br-ccu-20-i

RDS Room Code

1br-ccu-20-i

Room Name | 1 Bed Room - Special, CCU, 20m2

GENERAL NOTES:

THIS DRAWING TO BE READ IN CONJUNCTION WITH R.D.S. (ROOM DATA SHEETS) WHICH TAKES PRECEDENCE.

ALL SERVICES INDICATED ARE INDICATIVE AND SUBJECTED TO DETAILED PROJECT SPECIFIC ENGINEERING DESIGN.

CEILING LEGEND:

| CEILING TYPE | HEIGHT ABOVE F.F.L. | DESCRIPTION |
|--------------|---------------------|--|
| PB | 2700 | PLASTERBOARD BULKHEAD, PAINT FINISH |
| BH/PB | | PLASTERBOARD BULKHEAD, PAINT FINISH |
| PB-PC3 | | PLASTERBOARD FLUSH SET CEILING, PAINT FINISH WITH SQUARE SET CORNICE |
| --- | | GRID LINE |

ELECTRICAL LEGEND:

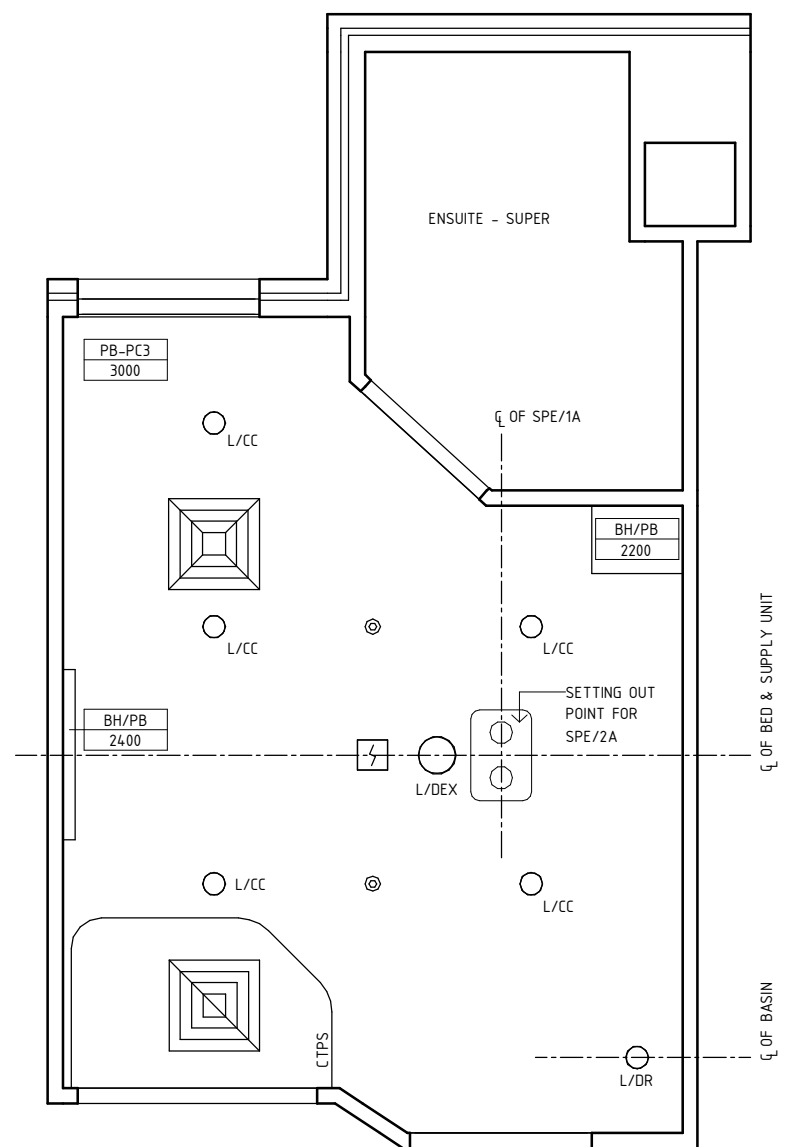
| | |
|-------|--------------------------------|
| L/CC | LIGHT - COLOUR CORRECTED |
| L/DEX | LIGHT - DOWNLIGHT, EXAMINATION |
| L/DR | LIGHT - DOWNLIGHT, RECESSED |

MECHANICAL LEGEND:

| | |
|--|-------------------|
| | SUPPLY AIR GRILLE |
| | RETURN AIR GRILLE |

FIRE SERVICES LEGEND:

| | |
|--|----------------|
| | SMOKE DETECTOR |
| | SPRINKLER |



REFLECTED CEILING PLAN

| REV | DESCRIPTION | DATE | BY | REV | DESCRIPTION | DATE | BY | COMPATIBILITY |
|-----|------------------|----------|----|-----|-------------|------|----|---------------|
| 1 | FIRST ISSUE | 24.10.10 | AL | | | | | |
| 2 | GENERAL REVISION | 13.04.11 | CT | | | | | |
| 3 | GENERAL REVISION | 27.01.23 | SS | | | | | |

| | | | | | |
|--|-----------------|------------------|----------|----------|--------|
| | DESIGNED | APPROVED | DATE | SCALE(S) | SHEET |
| | SS | RH | 27.01.23 | 1 : 50 | 3 OF 4 |
| | REVIT FILE NAME | PAPER DRAWING ID | ISSUE | | |
| | 1br-ccu-20-i | 1br-ccu-20-i-3 | 3 | | |

This document is for advisory purpose only

International Health Facility Guidelines at:
www.healthdesign.com.au/iHFG
Editable version of Standard Components on
Health Facility Briefing System (HFBS) at:
www.healthdesign.com.au ©TAHPI



iHFG Standard Components

Room Layout Sheet

RLS Room Code

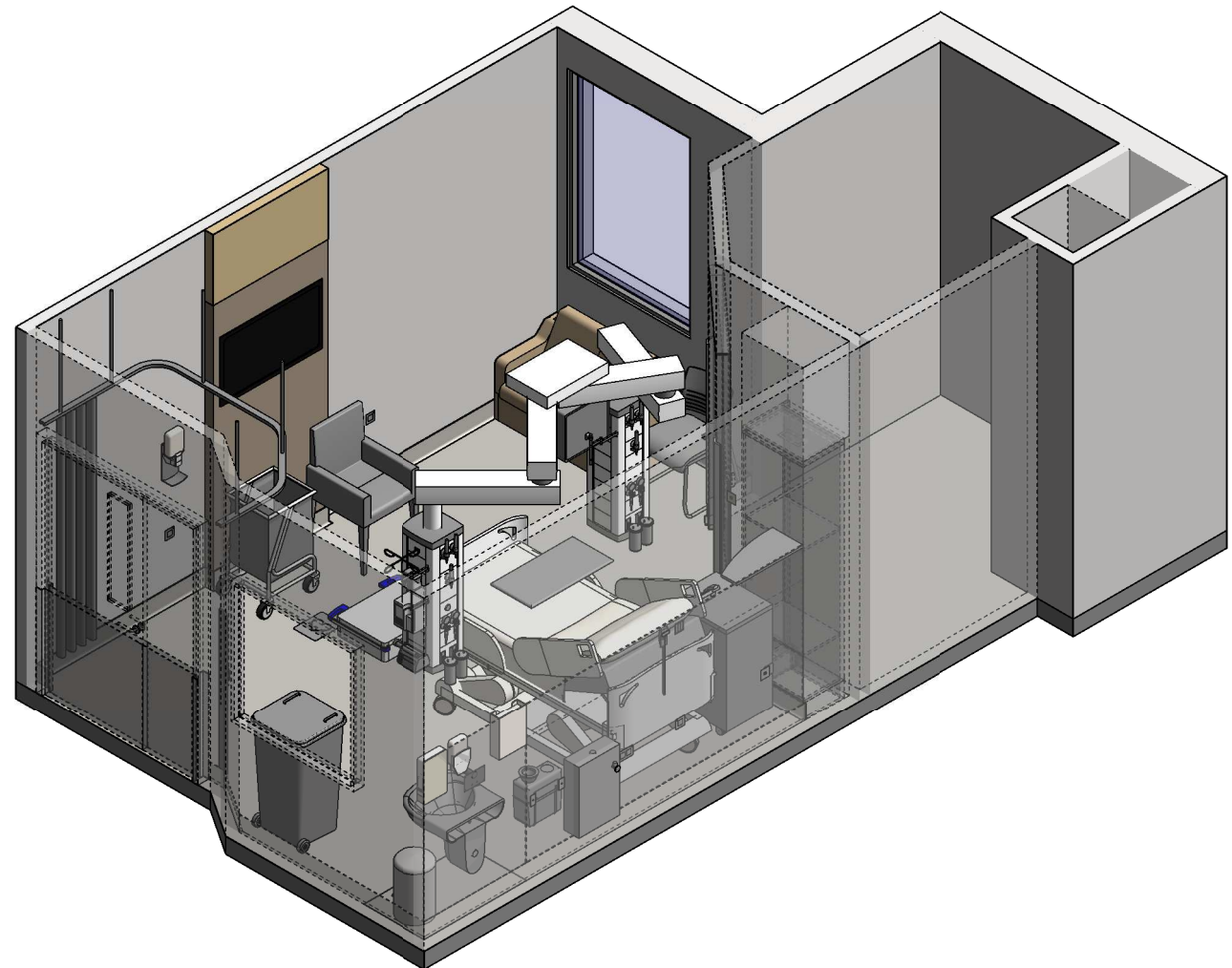
1br-ccu-20-i

RDS Room Code

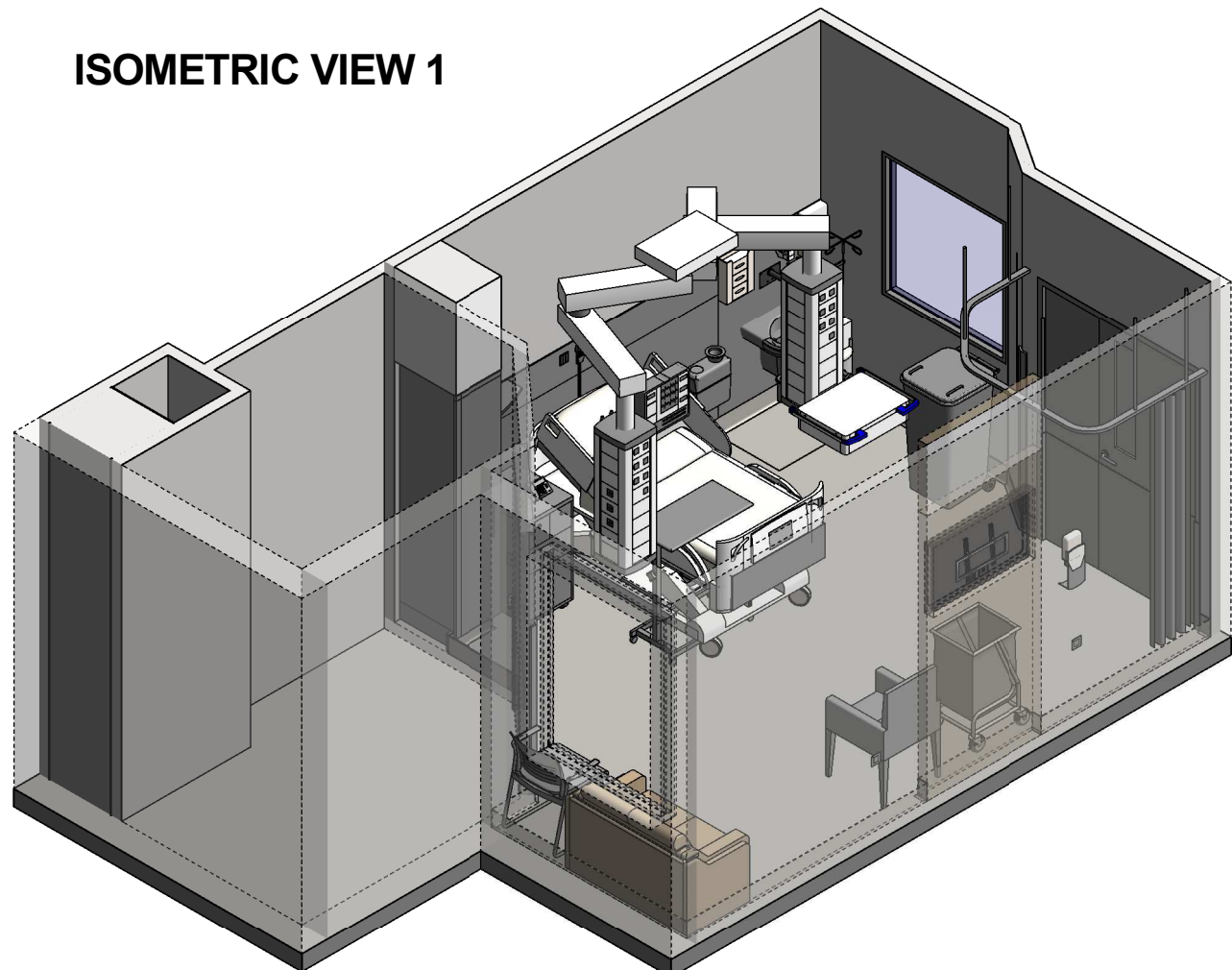
1br-ccu-20-i

Room Name

1 Bed Room - Special, CCU, 20m2





ISOMETRIC VIEW 1



ISOMETRIC VIEW 2

| REV | DESCRIPTION | DATE | BY | REV | DESCRIPTION | DATE | BY | COMPATIBILITY |
|-----|------------------|----------|----|-----|-------------|------|----|---------------|
| 1 | FIRST ISSUE | 24.10.10 | AL | | | | | |
| 2 | GENERAL REVISION | 13.04.11 | CT | | | | | |
| 3 | GENERAL REVISION | 27.01.23 | SS | | | | | |

| | | | | | | | | |
|---|---|----|---|-----------------|------------------|--------|----------|-------|
|  International Health Facility Guidelines | International Health Facility Guidelines at: www.healthdesign.com.au/iHFG Editable version of Standard Components on Health Facility Briefing System (HFBS) at: www.healthdesign.com.au ©TAHPI | |  | DESIGNED | APPROVED | DATE | SCALE(S) | SHEET |
| | SS | RH | | 27.01.23 | | 4 OF 4 | | |
| | | | | REVIT FILE NAME | PAPER DRAWING ID | | ISSUE | |
| | | | | 1br-ccu-20-i | 1br-ccu-20-i-4 | | 3 | |

This document is for advisory purpose only