

iHFG Standard Components

Room Layout Sheet

Room Name | 1 Bed Room - Standard, 15m2

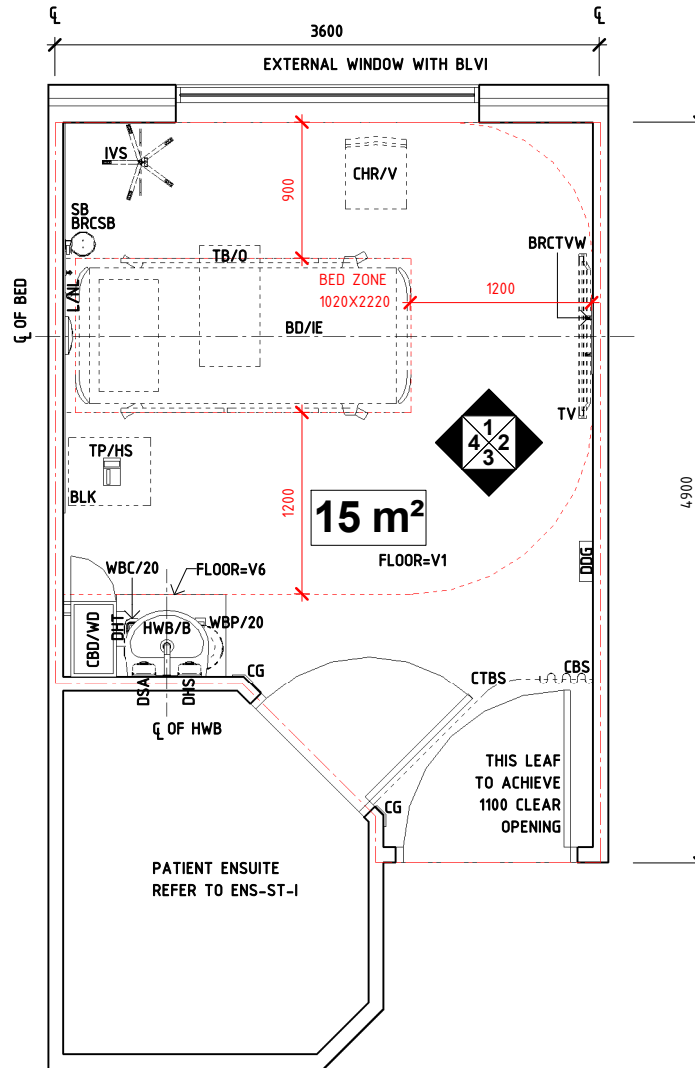
RLS Room Code

1br-st-15-i

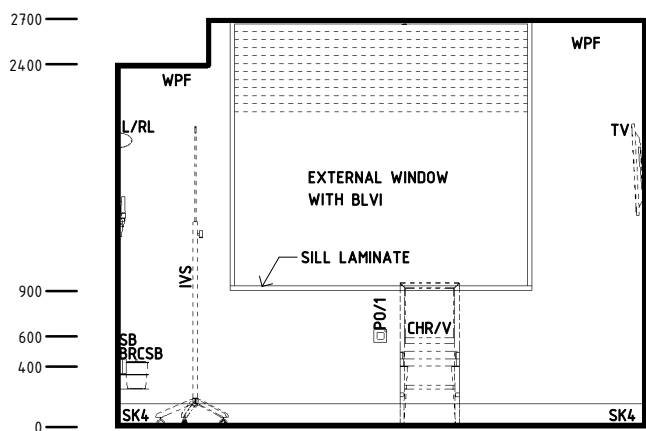
RDS Room Code

1br-st-16-5-i

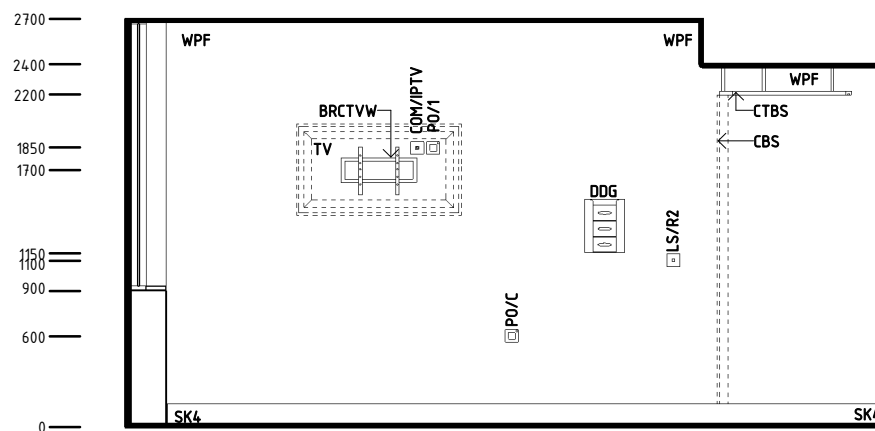
BD/IE	BED - INPATIENT, ELECTRIC
BH/PB	BULKHEAD - PLASTERBOARD, PAINT FINISH
BLK	LOCKER - BEDSIDE
BLVI	BLIND - VENETIAN, INTEGRAL
BRCBSB	BRACKET - SUCTION BOTTLE
BRCTVW	BRACKET - TELEVISION, WALL MOUNTED
CBD/WD	CUPBOARD - WARDROBE
CBS	CURTAIN - BED SCREEN
CG	CORNER GUARD
CHR/V	CHAIR - VISITOR
COM/2	COMMUNICATION OUTLET - DOUBLE
COM/PTV	COMMUNICATION OUTLET - INTERNET PROTOCOL TELEVISION
CTBS	CURTAIN TRACK - BED SCREEN
DDG	DISPENSER - DISPOSABLE GLOVES
DFP	DOOR AND DOOR FRAME PROTECTION
DHS	DISPENSER - HAND SANITISER
DHT	DISPENSER - PAPER HAND TOWEL
DSA	DISPENSER - SOAP, ANTISEPTIC
EC	EMERGENCY CALL
HWB/B	HAND WASH BASIN - TYPE 'B'
IVS	IV STAND - MOBILE
L/NL	LIGHT - NIGHT LIGHT
L/RL	LIGHT - READING LIGHT
LS/3	LIGHT SWITCH - 3 GANG
LS/E	LIGHT SWITCH - ENSUITE
LS/EL	LIGHT SWITCH - EXAMINATION LIGHT
LS/R2	LIGHT SWITCH - ROOM, 2 WAY
MA	MEDICAL AIR
O2	OXYGEN
PC	PATIENT CALL
PCH	PATIENT CALL HANDSET
PO/1	POWER OUTLET - SINGLE
PO/1E	POWER OUTLET - EMERGENCY, SINGLE
PO/C	POWER OUTLET - CLEANER'S
S	SUCTION
SAC	STAFF ASSIST CALL
SB	SUCTION BOTTLE
SBK	SPLASHBACK
SK4	FLOOR VINYL COVED SKIRTING
TAP/ST	TAPWARE - SENSOR TAP
TB/O	TABLE - OVERBED
TP/HS	TELEPHONE - HANDSET, STANDARD
TV	TELEVISION
V1	VINYL FLOORING, STANDARD SLIP RESISTANT
V6	VINYL FLOORING, NON SLIP - TEXTURED
WBC/20	WASTE BIN - CLINICAL, 20 LITRE
WBP/20	WASTE BIN - PAPER, 20 LITRE
WPF	WALL PAINT FINISH
WPP	WALL PROTECTION PANEL



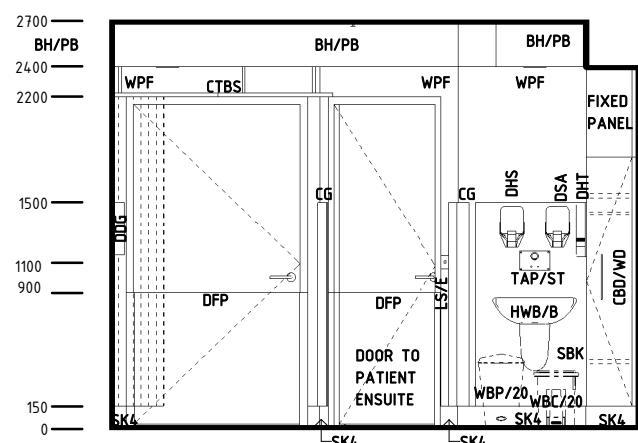
PLAN



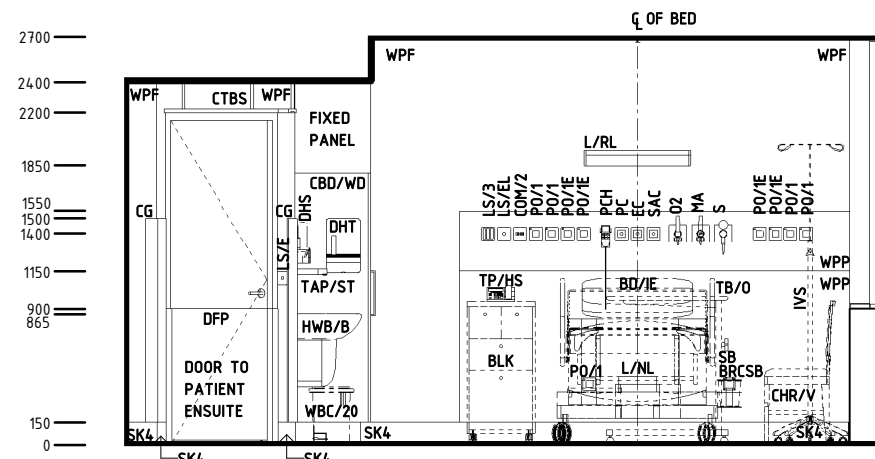
ELEVATION 1



ELEVATION 2



ELEVATION 3



ELEVATION 4

REV	DESCRIPTION	DATE	BY	REV	DESCRIPTION	DATE	BY	COMPATIBILITY
1	FIRST ISSUE	30.08.11	CC					
2	GENERAL REVISION	31.10.12	CT					
3	GENERAL REVISION	14.04.22	ES					

International Health Facility Guidelines	International Health Facility Guidelines at: www.healthdesign.com.au/iHFG Editable version of Standard Components on Health Facility Briefing System (HFBS) at: www.healthdesign.com.au ©TAHPI		DESIGNED	APPROVED	DATE	SCALE(S)	SHEET
	ES		CC	14.04.22	1 : 50	1 OF 3	
			REVIT FILE NAME	PAPER DRAWING ID		ISSUE	
			1br-st-15-i	1br-st-15-i-1		3	

iHFG Standard Components

Room Layout Sheet

RLS Room Code

1br-st-15-i

RDS Room Code

1br-st-15-i

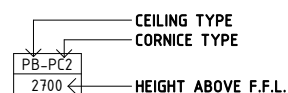
Room Name | 1 Bed Room - Standard, 15m2

GENERAL NOTES:

THIS DRAWING TO BE READ IN CONJUNCTION WITH R.D.S. (ROOM DATA SHEETS) WHICH TAKES PRECEDENCE.

ALL SERVICES INDICATED ARE INDICATIVE AND SUBJECTED TO DETAILED PROJECT SPECIFIC ENGINEERING DESIGN.

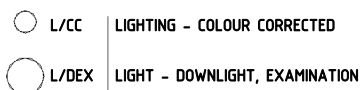
CEILING LEGEND:



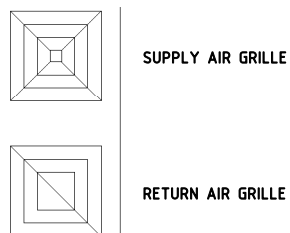
BH/PB PLASTERBOARD BULKHEAD, PAINT FINISH
PB-PC3 PLASTERBOARD FLUSH SET CEILING, PAINT FINISH WITH SQUARE SET CORNICE

--- GRID LINE

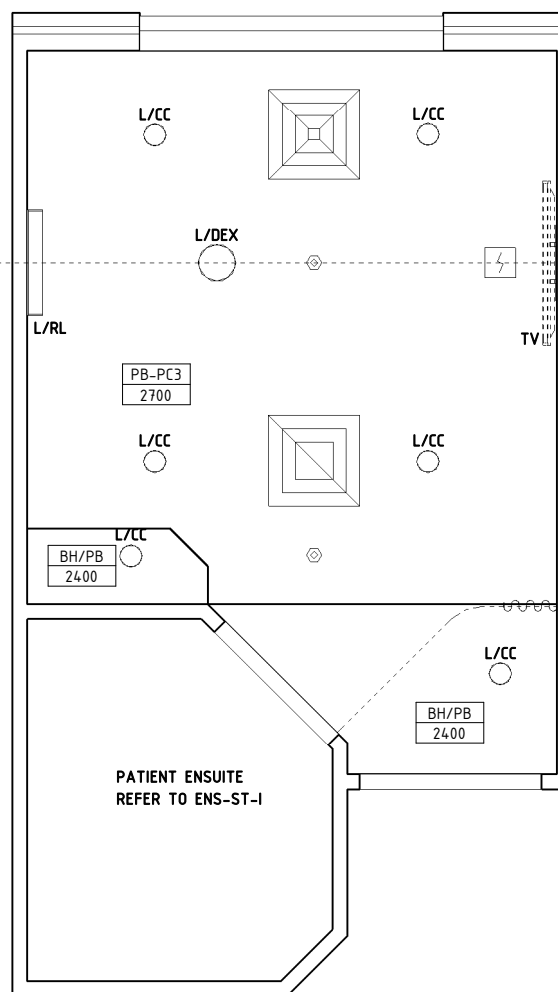
ELECTRICAL LEGEND:



MECHANICAL LEGEND:



FIRE SERVICES LEGEND:



REFLECTED CEILING PLAN

REV	DESCRIPTION	DATE	BY	REV	DESCRIPTION	DATE	BY	COMPATIBILITY		
1	FIRST ISSUE	30.08.11	CC					iHFG		
2	GENERAL REVISION	31.10.12	CT							
3	GENERAL REVISION	14.04.22	ES							
				DESIGNED		APPROVED		DATE	SCALE(S)	SHEET
				ES		CC		14.04.22	1 : 50	2 OF 3
				REVIT FILE NAME				PAPER DRAWING ID		ISSUE
				1br-st-15-i				1br-st-15-i-2		3

iHFG Standard Components

Room Layout Sheet

RLS Room Code

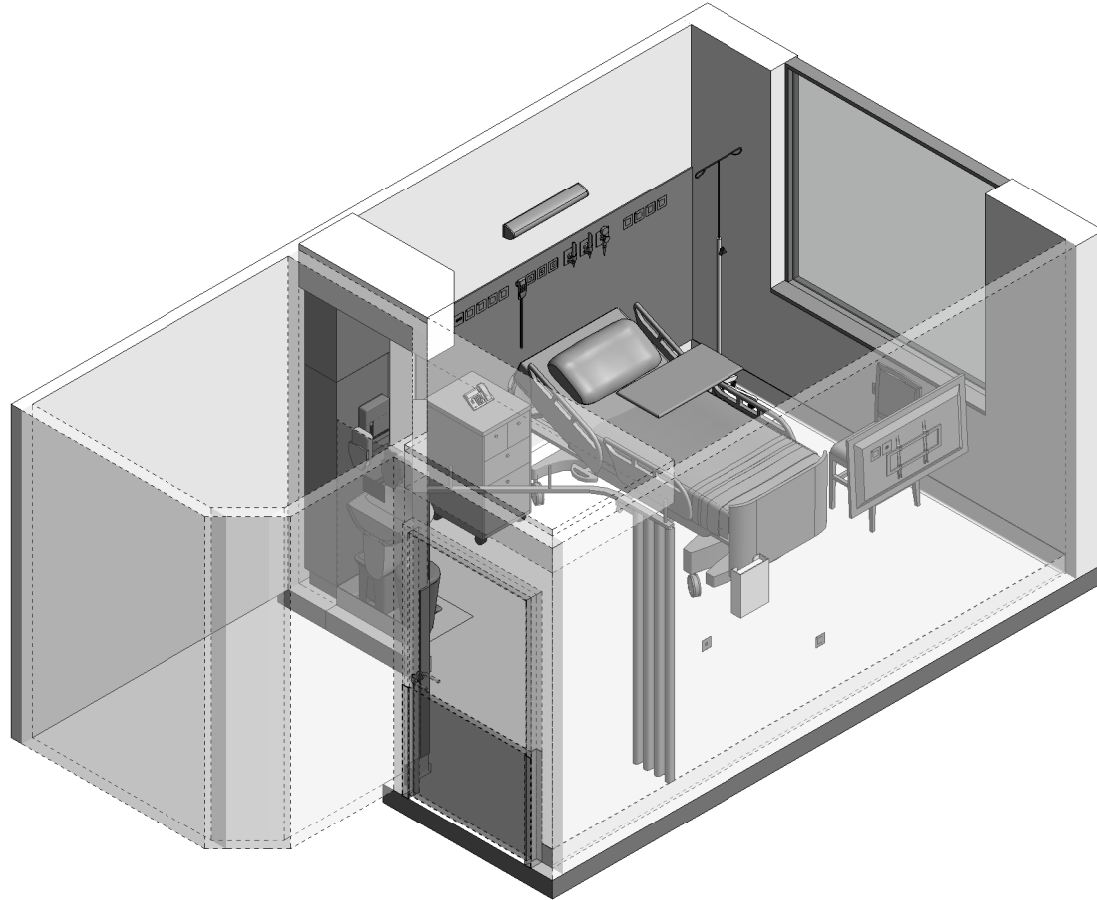
1br-st-15-i

RDS Room Code

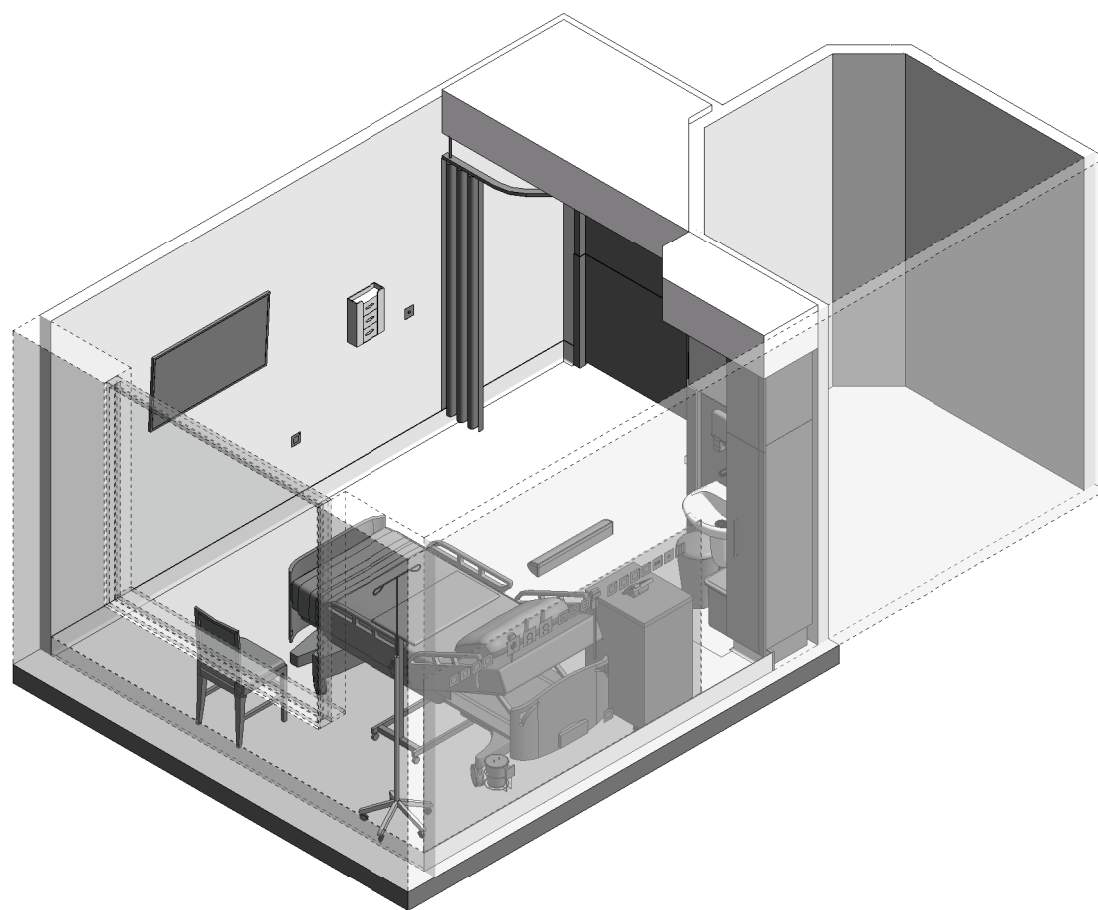
1br-st-16-5-i

Room Name

1 Bed Room - Standard, 16.5m²





ISOMETRIC VIEW 01



ISOMETRIC VIEW 02

REV	DESCRIPTION	DATE	BY	REV	DESCRIPTION	DATE	BY	COMPATIBILITY
1	FIRST ISSUE	30.08.11	CC					
2	GENERAL REVISION	31.10.12	CT					
3	GENERAL REVISION	14.04.22	ES					

 International Health Facility Guidelines	International Health Facility Guidelines at: www.healthdesign.com.au/iHFG Editable version of Standard Components on Health Facility Briefing System (HFBS) at: www.healthdesign.com.au ©TAHPI			DESIGNED	APPROVED	DATE	SCALE(S)	SHEET
	ES	CC		14.04.22		3 OF 3		
				REVIT FILE NAME	PAPER DRAWING ID		ISSUE	
				1br-st-15-i	1br-st-15-i-3		3	

This document is for advisory purpose only