

# iHFG Standard Components

## Room Layout Sheet

RLS Room Code

1br-st-18-i

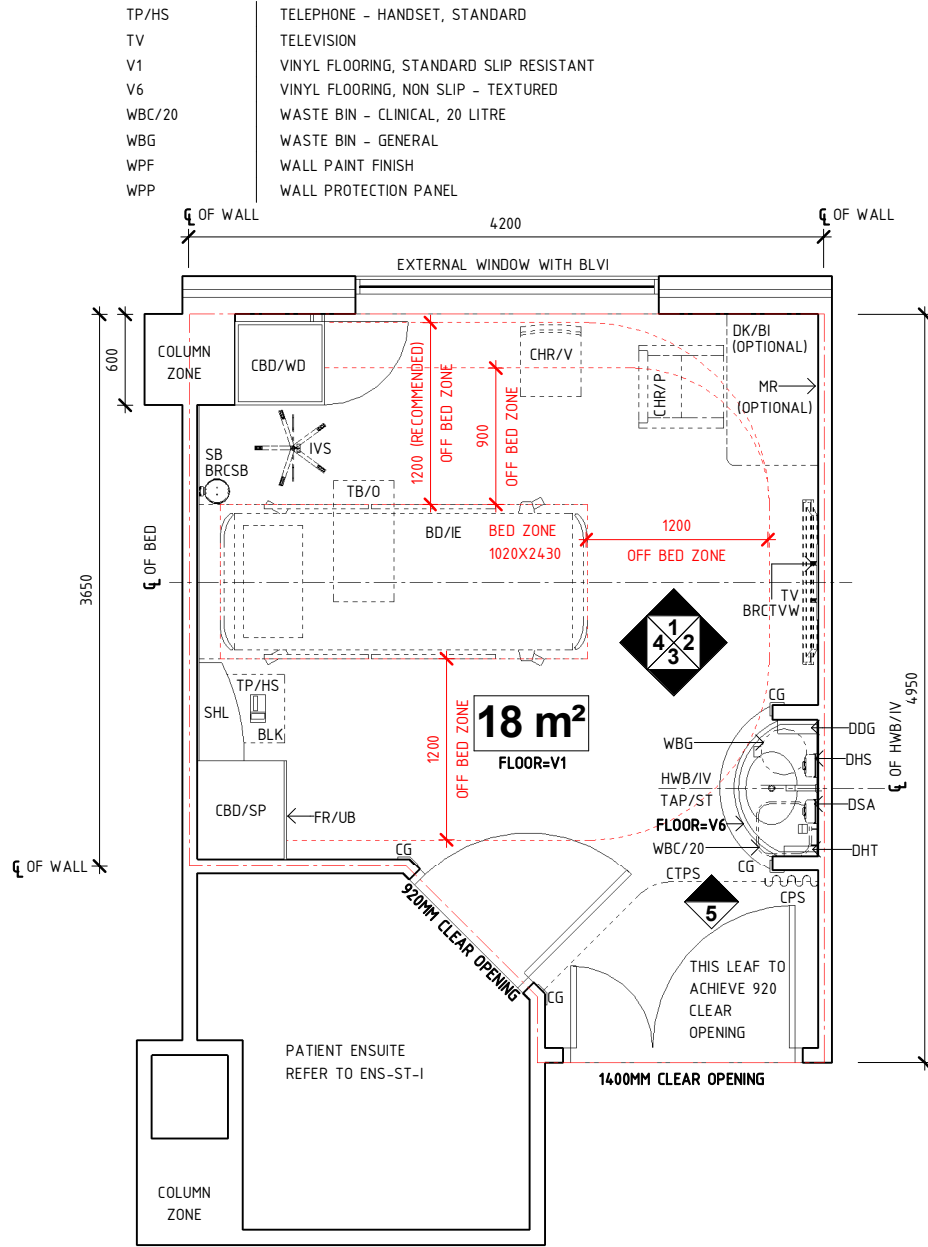
Room Name

1 Bed Room - Standard, 18m2

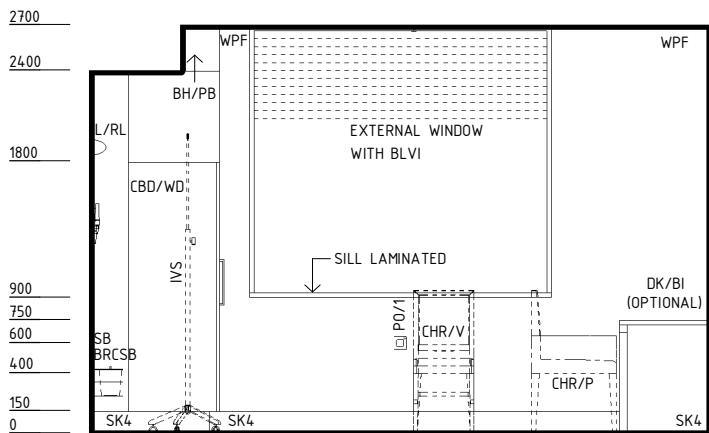
RDS Room Code

1br-st-18-i

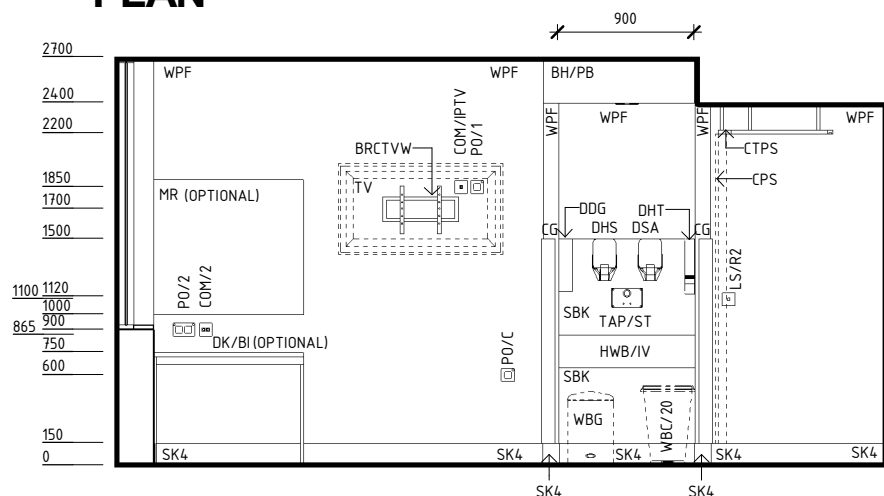
- BD/IE BED - INPATIENT, ELECTRIC
- BH/PB BULKHEAD - PLASTERBOARD, PAINT FINISH
- BLK LOCKER - BEDSIDE
- BLVI BLIND - VENETIAN, INTEGRAL
- BRCSTB BRACKET - SUCTION BOTTLE
- BRCTVW BRACKET - TELEVISION, WALL MOUNTED
- CBD/SP CUPBOARD - SPECIAL
- CBD/WD CUPBOARD - WARDROBE
- CG CORNER GUARD
- CHR/P CHAIR - PATIENT
- CHR/V CHAIR - VISITOR
- COM/2 COMMUNICATION OUTLET - DOUBLE
- COM/IPTV COMMUNICATION OUTLET - INTERNET PROTOCOL TELEVISION
- CPS CURTAIN - PRIVACY SCREEN
- CTPS CURTAIN TRACK - PRIVACY SCREEN
- DDG DISPENSER - DISPOSABLE GLOVES
- DFP DOOR AND DOOR FRAME PROTECTION
- DHS DISPENSER - HAND SANITISER
- DHT DISPENSER - PAPER HAND TOWEL
- DK/BI DESK - BUILT IN
- DSA DISPENSER - SOAP, ANTISEPTIC
- EC EMERGENCY CALL
- FR/UB FRIDGE - UNDER BENCH
- HWB/IV HAND WASH BASIN - INTEGRAL VANITY
- IVS IV STAND - MOBILE
- L/NL LIGHT - NIGHT LIGHT
- L/RL LIGHT - READING LIGHT
- LS/3 LIGHT SWITCH - 3 GANG
- LS/E LIGHT SWITCH - ENSUITE
- LS/EL LIGHT SWITCH - EXAMINATION LIGHT
- LS/N LIGHT SWITCH - NIGHT LIGHT
- LS/R2 LIGHT SWITCH - ROOM, 2 WAY
- LS/RL LIGHT SWITCH - READING LIGHT
- MA MEDICAL AIR
- MR MIRROR
- O2 OXYGEN
- OP OBSERVATION PANEL
- PC PATIENT CALL
- PCH PATIENT CALL HANDSET
- PO/1 POWER OUTLET - SINGLE
- PO/1E POWER OUTLET - EMERGENCY, SINGLE
- PO/2 POWER OUTLET - DOUBLE
- PO/C POWER OUTLET - CLEANER'S
- S SUCTION
- SAC STAFF ASSIST CALL
- SB SUCTION BOTTLE
- SBK SPLASHBACK
- SHL SHELF - LAMINATED
- SK4 FLOOR VINYL COVERED SKIRTING
- TAP/ST TAPWARE - SENSOR TAP
- TB/O TABLE - OVERBED
- TP/HS TELEPHONE - HANDSET, STANDARD
- TV TELEVISION
- V1 VINYL FLOORING, STANDARD SLIP RESISTANT
- V6 VINYL FLOORING, NON SLIP - TEXTURED
- WBC/20 WASTE BIN - CLINICAL, 20 LITRE
- WBG WASTE BIN - GENERAL
- WPF WALL PAINT FINISH
- WPP WALL PROTECTION PANEL



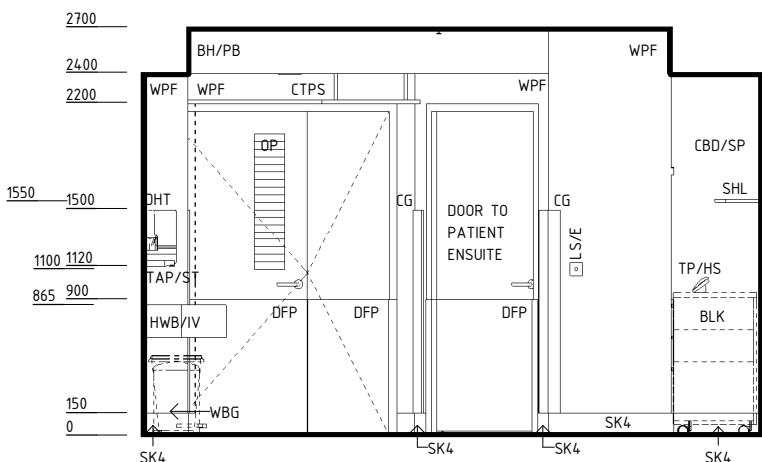
PLAN



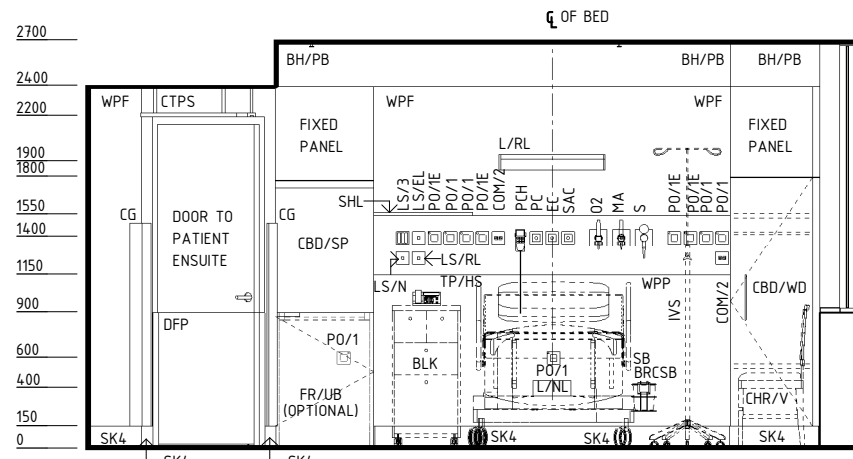
ELEVATION 1



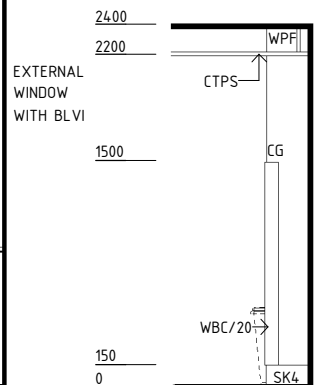
ELEVATION 2



ELEVATION 3



ELEVATION 4



ELEVATION 5

REV	DESCRIPTION	DATE	BY	REV	DESCRIPTION	DATE	BY	COMPATIBILITY
1	FIRST ISSUE	24.10.10	LL	4	GENERAL REVISION	16.05.17	TJ	iHFG
2	GENERAL REVISION	30.08.11	ASD	5	GENERAL REVISION	15.03.22	ES	
3	GENERAL REVISION	31.10.12	CT					



International Health Facility Guidelines at:  
[www.healthdesign.com.au/iHFG](http://www.healthdesign.com.au/iHFG)  
 Editable version of Standard Components on  
 Health Facility Briefing System (HFBS) at:  
[www.healthdesign.com.au/TAHPI](http://www.healthdesign.com.au/TAHPI)



DESIGNED	APPROVED	DATE	SCALE(S)	SHEET
ES	CC	15.03.22	1 : 50	1 OF 3
REVIT FILE NAME		PAPER DRAWING ID		ISSUE
1br-st-18-i		1br-st-18-i-1		5

This document is for advisory purpose only

# iHFG Standard Components

## Room Layout Sheet

RLS Room Code

1br-st-18-i

RDS Room Code

1br-st-18-i

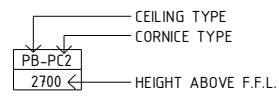
Room Name | 1 Bed Room - Standard, 18m2

### GENERAL NOTES:

THIS DRAWING TO BE READ IN CONJUNCTION WITH R.D.S. (ROOM DATA SHEETS) WHICH TAKES PRECEDENCE.

ALL SERVICES INDICATED ARE INDICATIVE AND SUBJECT TO DETAILED PROJECT SPECIFIC ENGINEERING DESIGN.

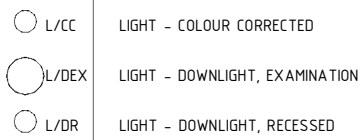
### CEILING LEGEND:



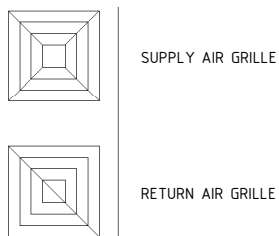
BH/PB PLASTERBOARD BULKHEAD, PAINT FINISH  
PB-PC3 PLASTERBOARD FLUSH SET CEILING, PAINT FINISH WITH SQUARE SET CORNICE

--- GRID LINE

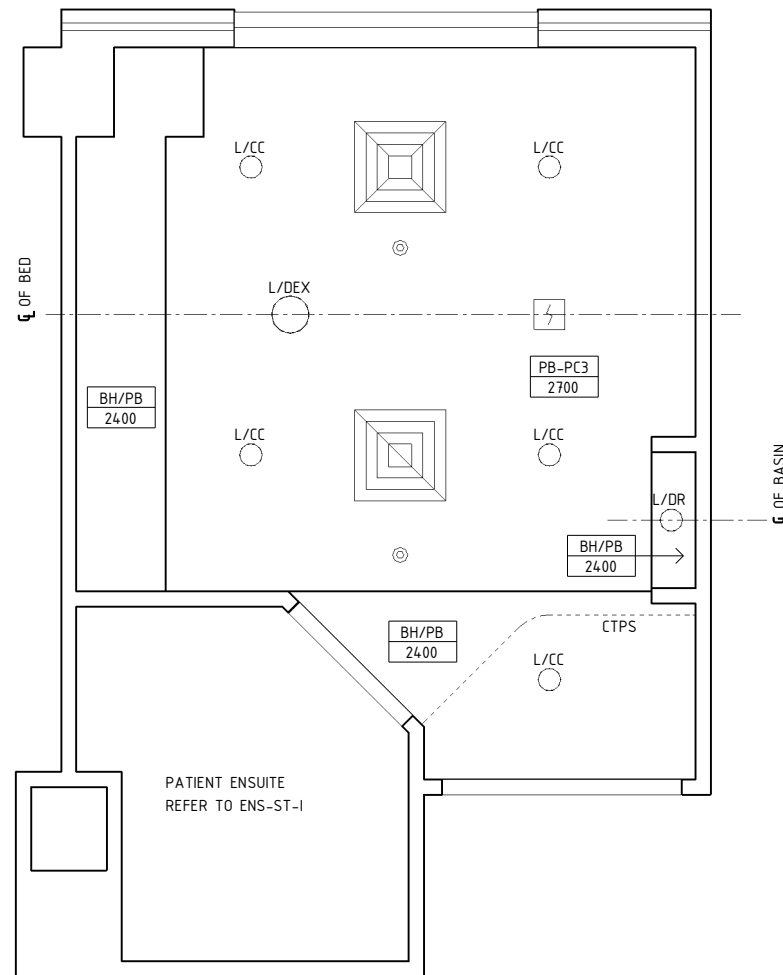
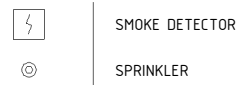
### ELECTRICAL LEGEND:



### MECHANICAL LEGEND:



### FIRE SERVICES LEGEND:



**REFLECTED CEILING PLAN**

REV	DESCRIPTION	DATE	BY	REV	DESCRIPTION	DATE	BY	COMPATIBILITY
1	FIRST ISSUE	24.10.10	LL	4	GENERAL REVISION	16.05.17	TJ	
2	GENERAL REVISION	30.08.11	ASD	5	GENERAL REVISION	15.03.22	ES	
3	GENERAL REVISION	31.10.12	CT					



International Health Facility Guidelines at:  
www.healthdesign.com.au/iHFG  
Editable version of Standard Components on  
Health Facility Briefing System (HFBS) at:  
www.healthdesign.com.au @TAHPI



DESIGNED	APPROVED	DATE	SCALE(S)	SHEET
ES	CC	15.03.22	1 : 50	2 OF 3
REVIT FILE NAME		PAPER DRAWING ID		ISSUE
1br-st-18-i		1br-st-18-i-2		5

# iHFG Standard Components

Room Layout Sheet

RLS Room Code

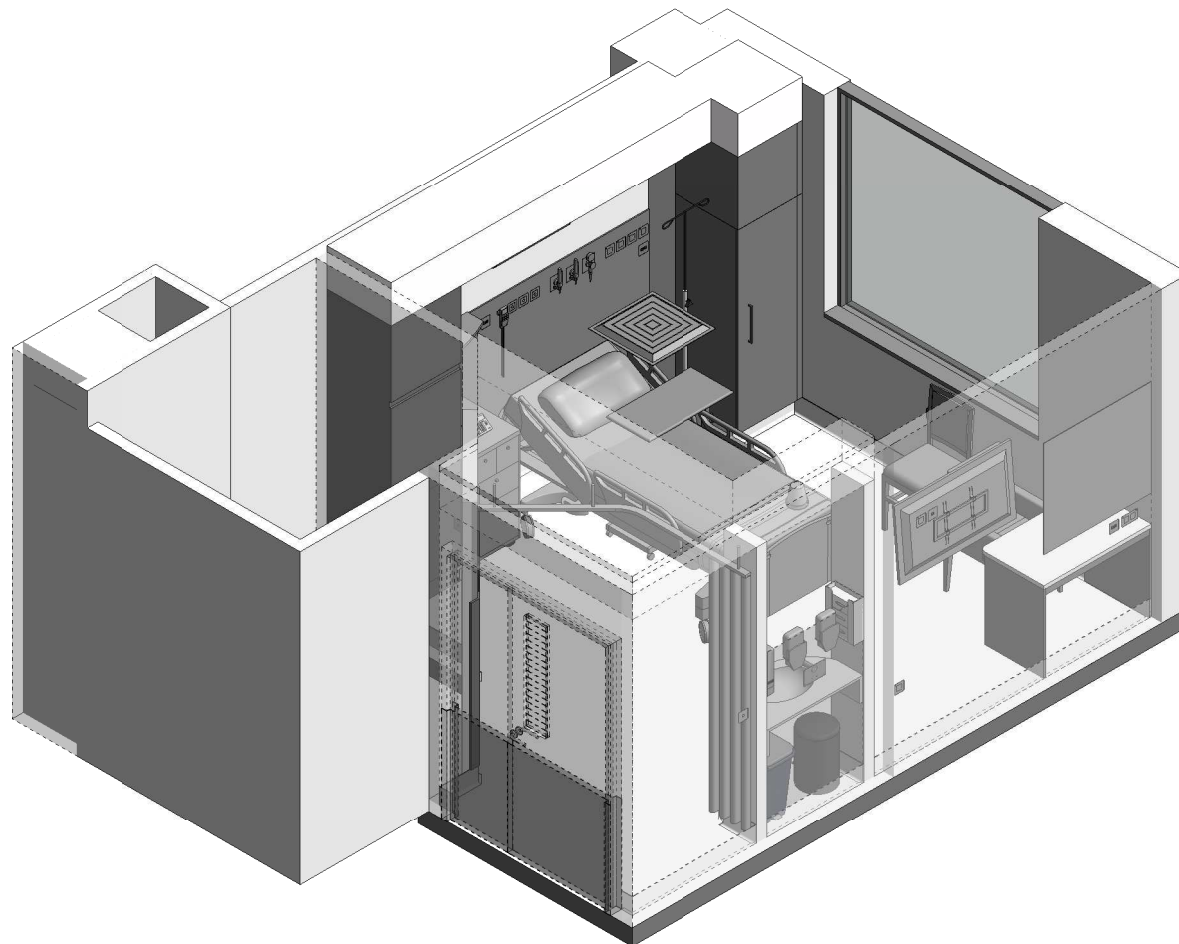
1br-st-18-i

RDS Room Code

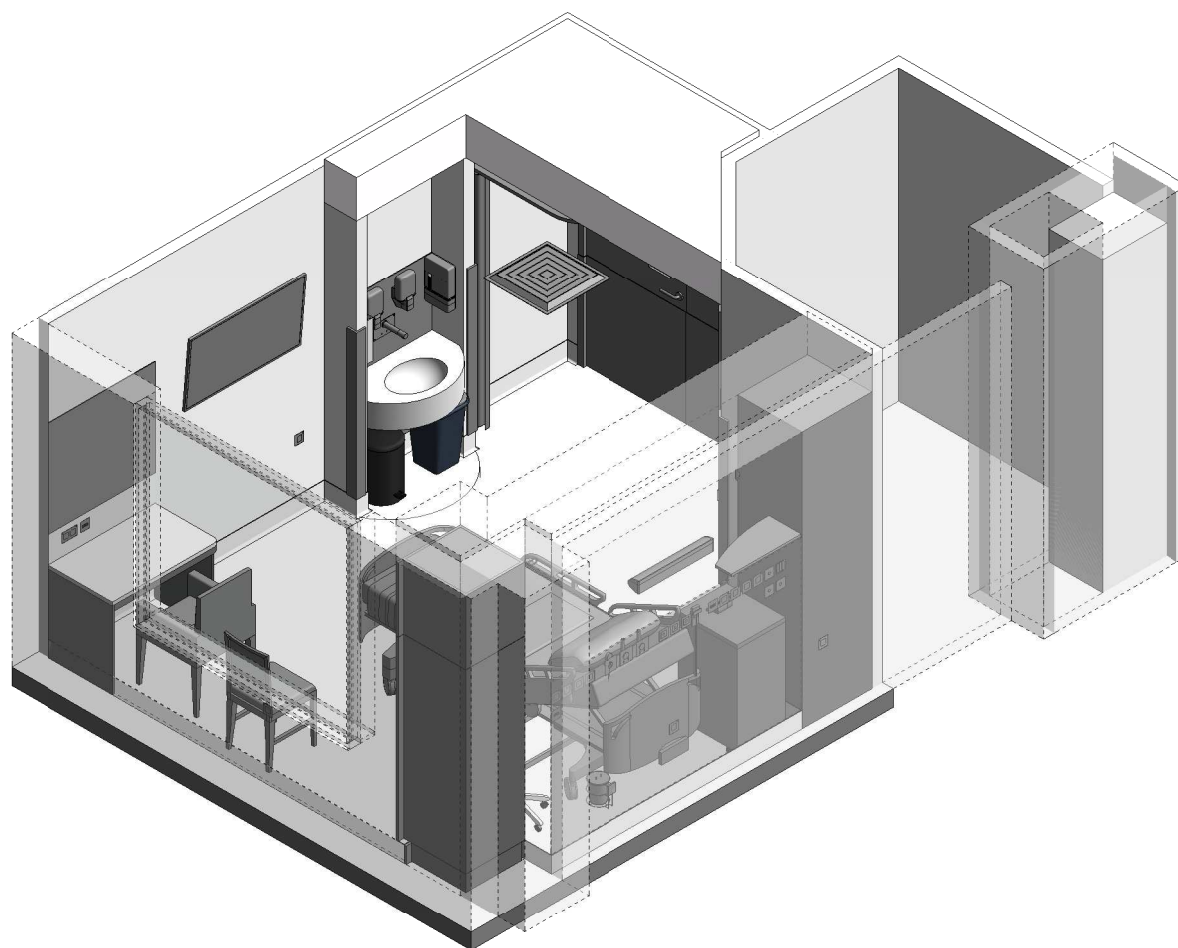
1br-st-18-i

Room Name

1 Bed Room - Standard, 18m2



**ISOMETRIC VIEW 01**



**ISOMETRIC VIEW 02**

REV	DESCRIPTION	DATE	BY	REV	DESCRIPTION	DATE	BY	COMPATIBILITY				
1	FIRST ISSUE	24.10.10	LL	4	GENERAL REVISION	16.05.17	TJ	iHFG				
2	GENERAL REVISION	30.08.11	ASD	5	GENERAL REVISION	15.03.22	ES					
3	GENERAL REVISION	31.10.12	CT									
								DESIGNED	APPROVED	DATE	SCALE(S)	SHEET
								ES	CC	15.03.22		3 OF 3
								REVIT FILE NAME		PAPER DRAWING ID		ISSUE
								1br-st-18-i		1br-st-18-i-3		5