

iHFG Standard Components

Room Layout Sheet

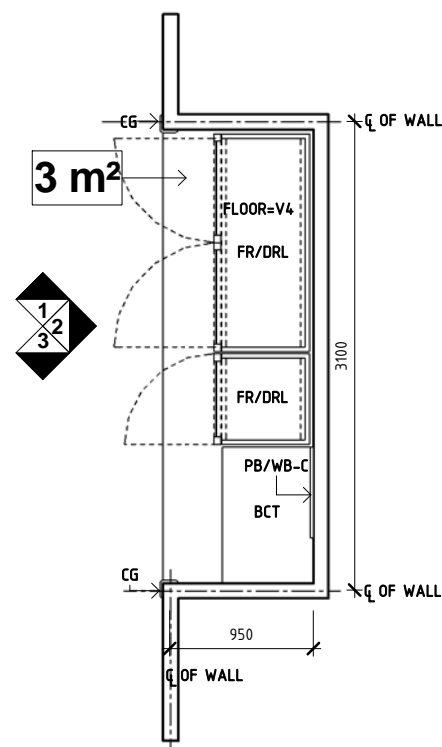
Room Name **After Hours Blood Fridge**

RLS Room Code **AHBBF-I**

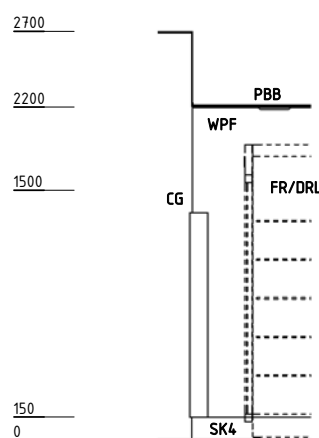
RDS Room Code **AHBBF-I**

Abbreviations

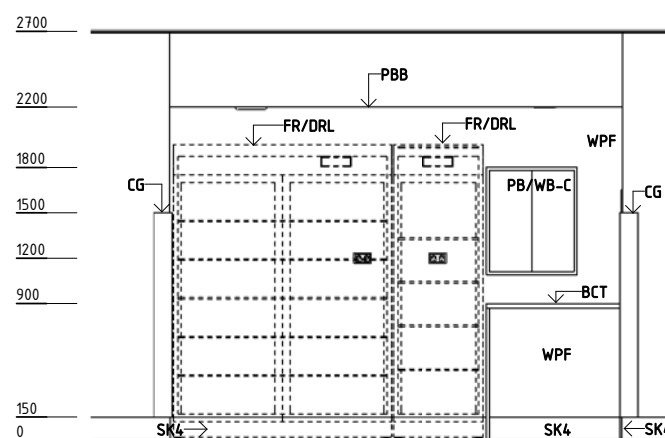
BCT	BENCHTOP
CG	CORNER GUARD
FR/DRL	FRIDGE - DRUG, LARGE
GPO/2EP	EMERGENCY POWER OUTLET - DOUBLE
PB/WB-C	PINBOARD - WHITEBOARD COMBINATION
SD	SMOKE DETECTOR
TMP	TEMPERATURE MONITOR ALARM PANEL
PBB	PLASTERBOARD BULKHEAD, PAINT FINISH
CPT	CARPET TILES
V4	VINYL FLOORING, NON-SLIP SAFETY
SK4	FLOOR VINYL COVERED SKIRTING
WPF	WALL PAINT FINISH



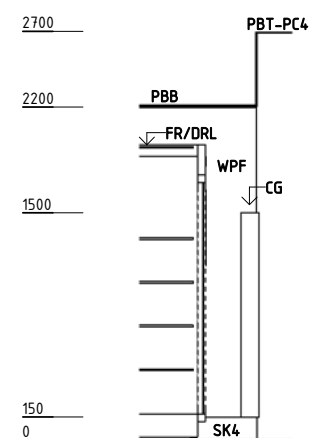
PLAN



ELEVATION 1



ELEVATION 2



ELEVATION 3

REV	DESCRIPTION	DATE	BY	REV	DESCRIPTION	DATE	BY	REV	DESCRIPTION	DATE	BY
1	FIRST ISSUE #	19.10.2014	AAL								

iHFG Standard Components

Room Layout Sheet

Room Name **After Hours Blood Fridge**

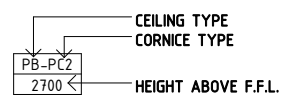
RLS Room Code **AHBBF-I**
RDS Room Code **AHBBF-I**

GENERAL NOTES:

THIS DRAWING TO BE READ IN CONJUNCTION WITH R.D.S.
(ROOM DATA SHEETS) WHICH TAKES PRECEDENCE.

ALL SERVICES INDICATED ARE INDICATIVE AND SUBJECTED TO
DETAILED PROJECT SPECIFIC ENGINEERING DESIGN.

CEILING LEGEND:

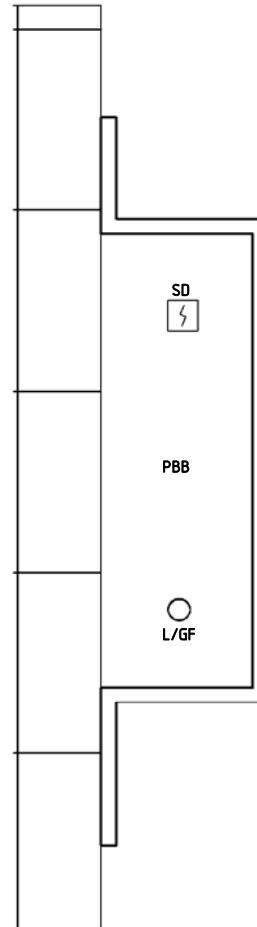


PBB | PLASTERBOARD BULKHEAD, PAINT FINISH
PBT-PC4 | PLASTERBOARD DROP-IN CEILING TILES (PREFINISHED)
WITH POWDERCOAT ALUMINIUM CORNICE, SHADOW ANGLE
24mm

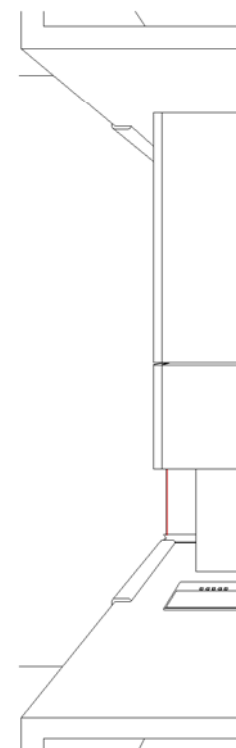
ELECTRICAL LEGEND:

○ FL-C | FLUORESCENT DIFFUSED RECESSED,
COLOUR CORRECTED - CYANOSIS

FIRE SERVICES LEGEND:
L/GF | LIGHTING - GENERAL FLUORESCENT
SD | SMOKE DETECTOR



REFLECTED CEILING PLAN



PERSPECTIVE - PLAN VIEW

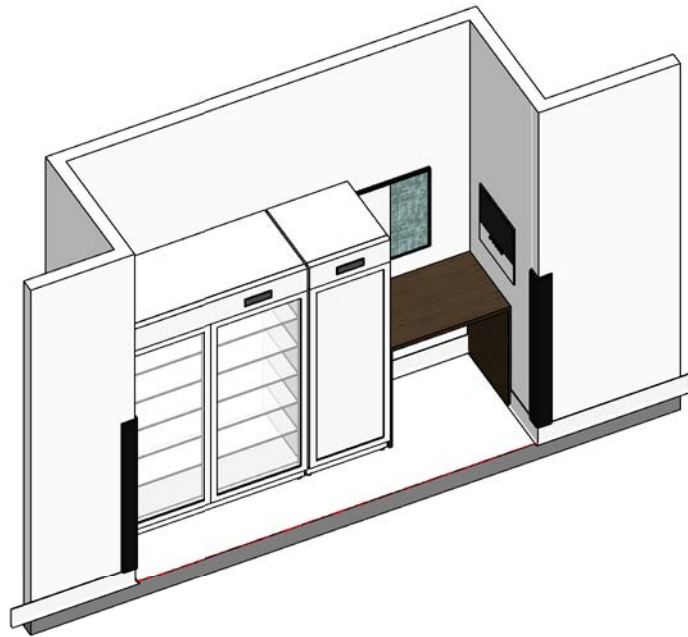
REV	DESCRIPTION	DATE	BY	REV	DESCRIPTION	DATE	BY	REV	DESCRIPTION	DATE	BY
1	FIRST ISSUE #	19.10.2014	AAL								

iHFG Standard Components

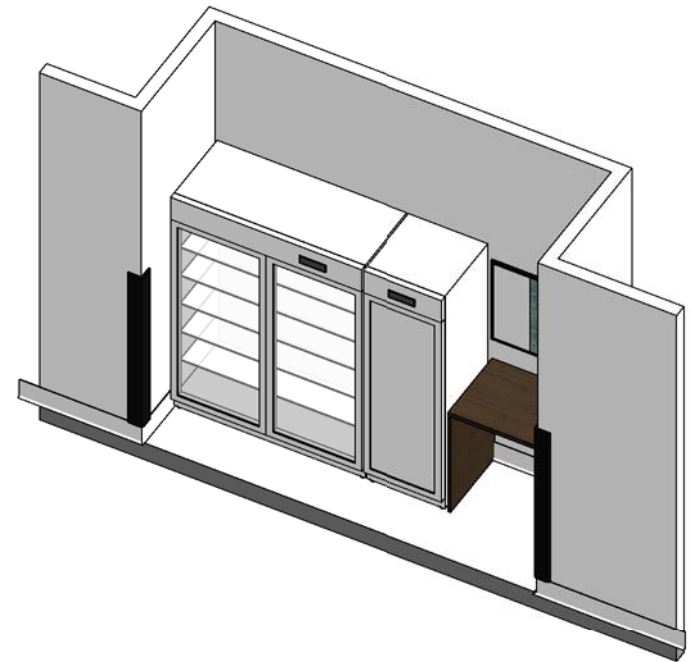
Room Layout Sheet

Room Name | **After Hours Blood Fridge**

RLS Room Code **AHBBF-I**
RDS Room Code **AHBBF-I**



ISOMETRIC VIEW 02



ISOMETRIC VIEW 01



PERSPECTIVE VIEW 1

REV	DESCRIPTION	DATE	BY	REV	DESCRIPTION	DATE	BY	REV	DESCRIPTION	DATE	BY
1	FIRST ISSUE #	19.10.2014	AAL								



The International Health Facility Guidelines recommends the use of HFBS “Health Facility Briefing System” to edit all room data sheet information for your project.

HFBS provides edit access to all iHFG standard rooms, and departments, and more than 100 custom report templates.

HFBS Health Facility Briefing System



Briefing Module

The Health Facility Briefing System (HFBS) has numerous modules available via annual subscription. It suits healthcare Architects, Medical Planners, Equipment Planners Project Managers and Health Authorities.

Use the HFBS Briefing Module to quickly drag in health facility departments or pre-configured room templates from the iHFG standard, edit the room features such as finishes, furniture, fittings, fixtures, medical equipment, engineering services. The system can print or download as PDF more than 100 custom reports including room data sheets, schedules, and more...

To learn more about the HFBS web-based Healthcare Briefing and Design Software and to obtain editable versions of the “Standard Components” including Room Data Sheets (RDS) and Room Layout Sheets (RLS) offered on the iHFG website, signup for HFBS using the link below.

Get Started Now:
hfbs.healthdesign.com.au

- ✓ iHFG Room Data Sheets and Departments are instantly editable in the HFBS software available online.
- ✓ You can access hundreds of report templates to print your iHFG room data in HFBS.
- ✓ HFBS has a onetime free 3 day trial available to all new users.

Get Started Now:
hfbs.healthdesign.com.au



HFBS

Health Facility Briefing System

hfbsinfo.com | techsupport@healthdesign.com.au