

iHFG Standard Components

Room Layout Sheet

RLS Room Code

airle-6-i

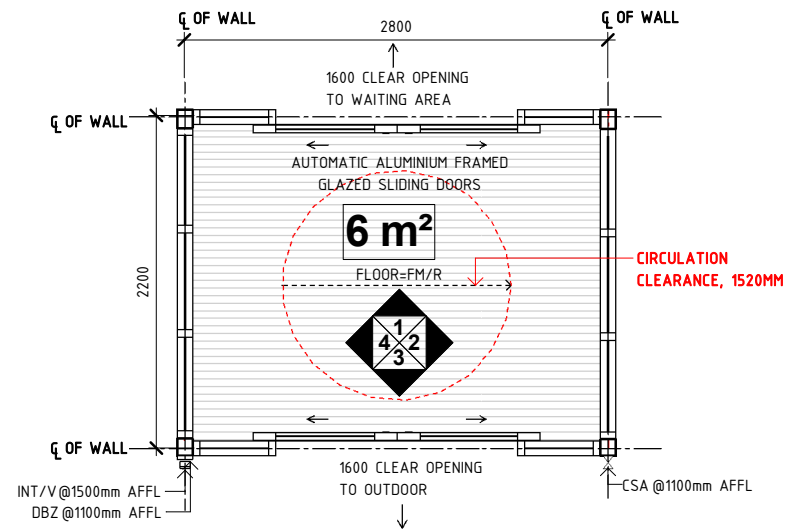
RDS Room Code

airle-6-i

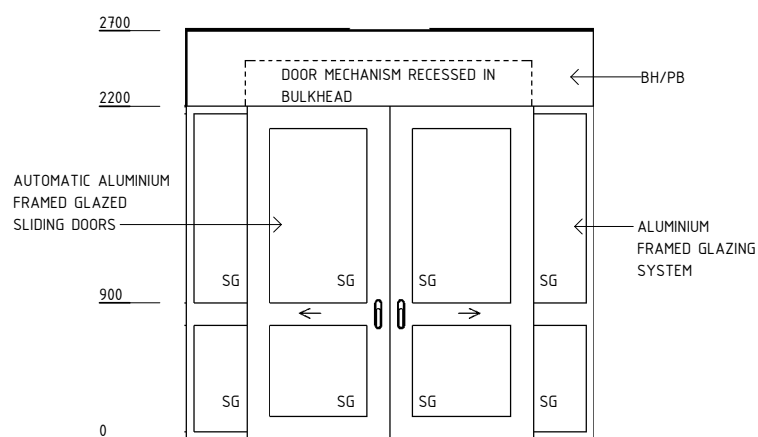
Room Name

Airlock Entry, 6m²

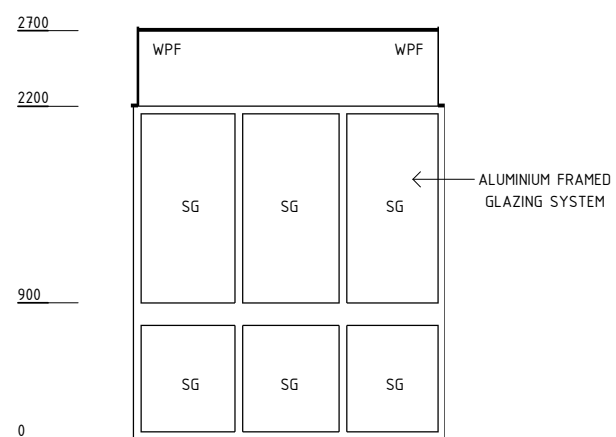
BH/PB	BULKHEAD - PLASTERBOARD, PAINT FINISH
CCTV	CAMERA, CLOSED CIRCUIT TELEVISION
CSA	CARD ACCESS
DBZ	DOOR BUZZER
FM/R	FLOOR MAT - RECESSED
INT/V	INTERCOM - VIDEO
PO/C	POWER OUTLET - CLEANER'S
SG	SAFETY GLASS
WPF	WALL PAINT FINISH



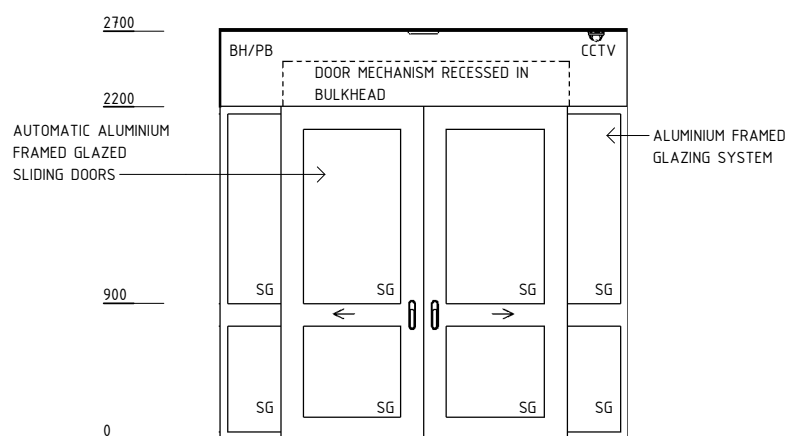
PLAN



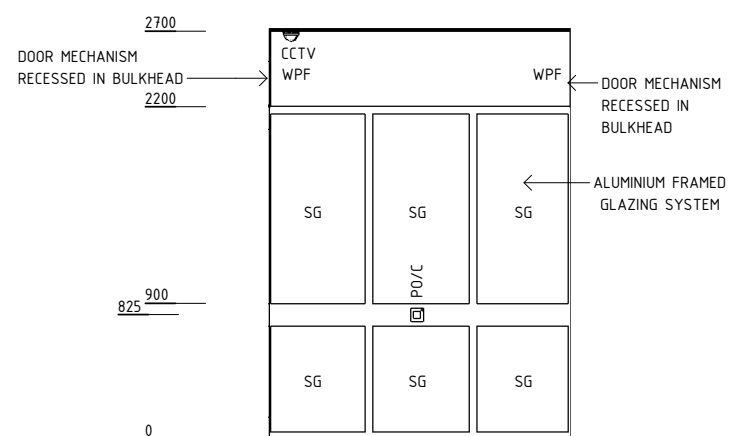
ELEVATION 1



ELEVATION 2



ELEVATION 3



ELEVATION 4

REV	DESCRIPTION	DATE	BY	REV	DESCRIPTION	DATE	BY	COMPATIBILITY
1	FIRST ISSUE	19.10.15	PJ					
2	GENERAL REVISION	27.01.23	AM					



International Health Facility Guidelines at:
www.healthdesign.com.au/iHFG
 Editable version of Standard Components on
 Health Facility Briefing System (HFBS) at:
www.healthdesign.com.au/TAHPI



DESIGNED	APPROVED	DATE	SCALE(S)	SHEET
AM	SA	27.01.23	1 : 50	1 OF 2
REVIT FILE NAME		PAPER DRAWING ID		ISSUE
airle-6-i		airle-6-i-1		2

iHFG Standard Components

Room Layout Sheet

RLS Room Code

airle-6-i

RDS Room Code

airle-6-i

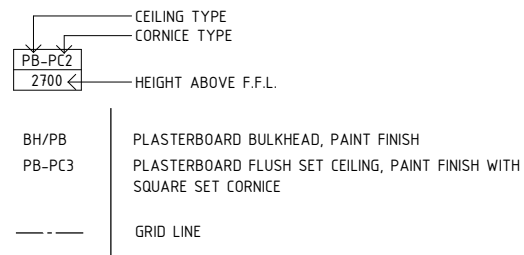
Room Name | **Airlock - Entry , 6m2**

GENERAL NOTES:

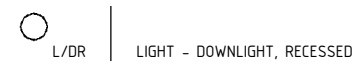
THIS DRAWING TO BE READ IN CONJUNCTION WITH R.D.S. (ROOM DATA SHEETS) WHICH TAKES PRECEDENCE.

ALL SERVICES INDICATED ARE INDICATIVE AND SUBJECTED TO DETAILED PROJECT SPECIFIC ENGINEERING DESIGN.

CEILING LEGEND:



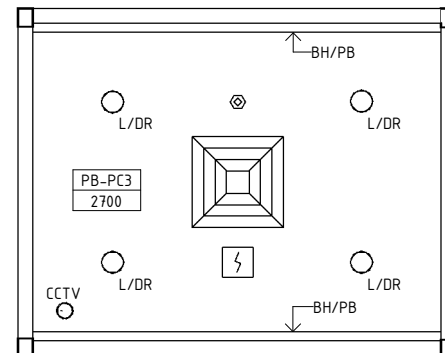
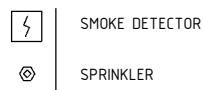
ELECTRICAL LEGEND:



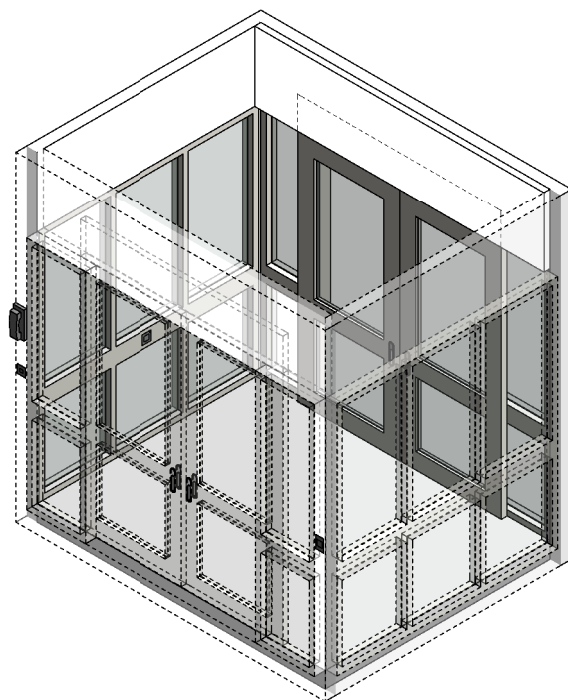
MECHANICAL LEGEND:



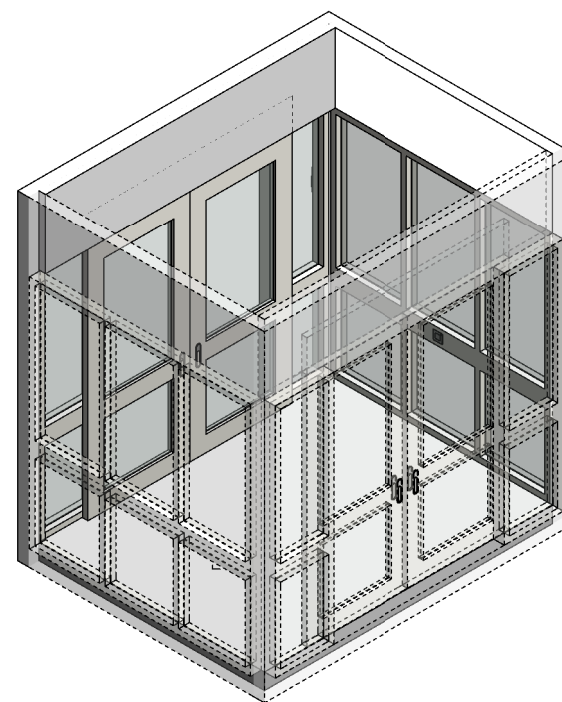
FIRE SERVICES LEGEND:



REFLECTED CEILING PLAN



ISOMETRIC VIEW 01



ISOMETRIC VIEW 02

REV	DESCRIPTION	DATE	BY	REV	DESCRIPTION	DATE	BY	COMPATIBILITY
1	FIRST ISSUE	19.10.15	PJ					iHFG
2	GENERAL REVISION	27.01.23	AM					