

iHFG Standard Components

Room Layout Sheet

Room Name

Angiography Control / Reporting Room

RLS Room Code

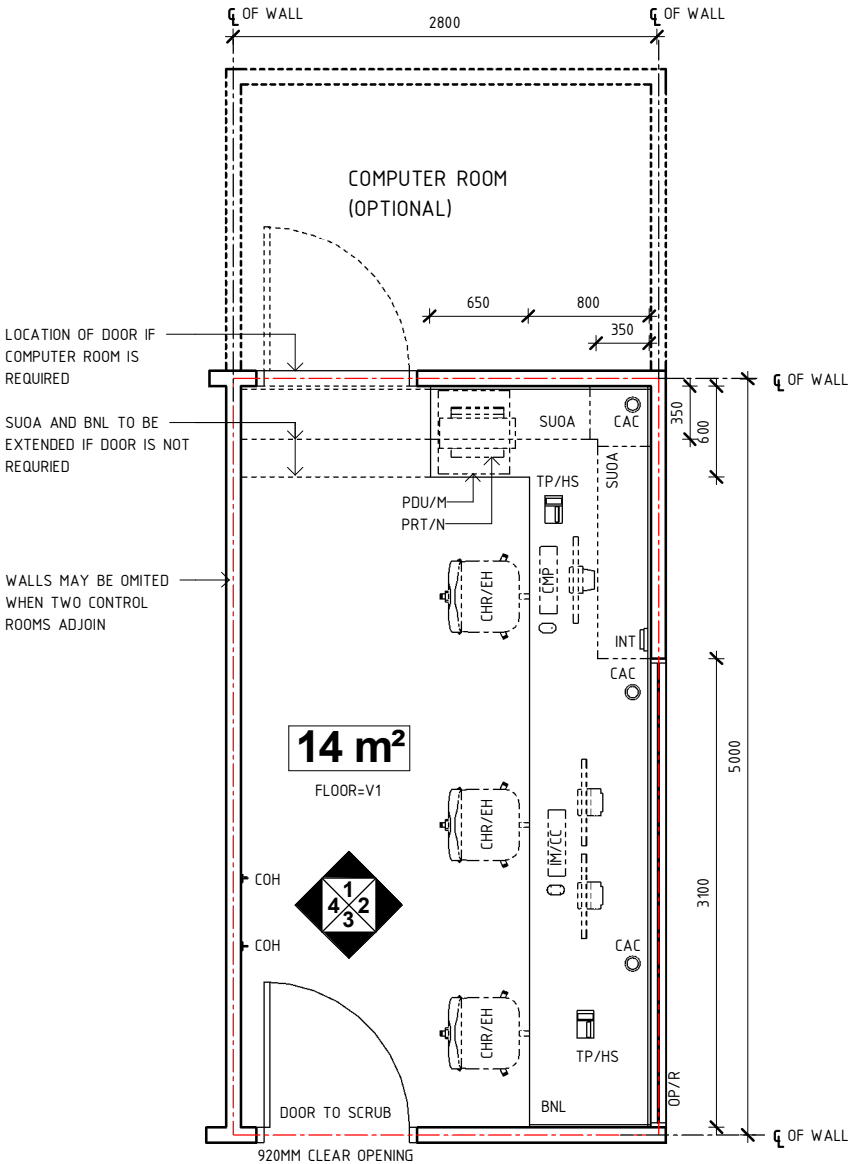
ancrt-i

RDS Room Code

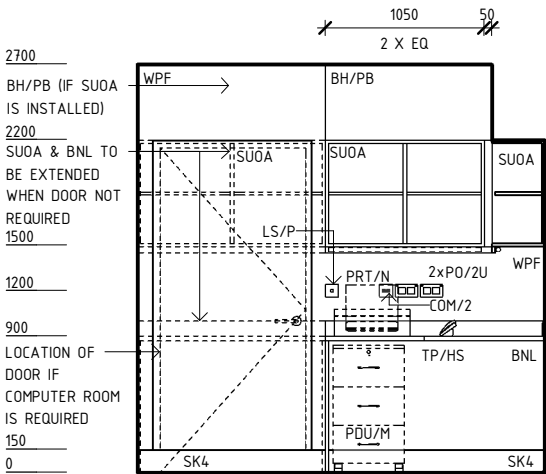
ancrt-i

BH/PB	BULKHEAD - PLASTERBOARD, PAINT FINISH
BNL	BENCH - LAMINATE
CAC	CABLE ACCESS CAP
CHR/EH	CHAIR - ERGONOMIC, HIGH
CMP	COMPUTER
COH	COAT HOOK
COM/2	COMMUNICATION OUTLET - DOUBLE
IM/CC	IMAGING - CONSOLE, CONTROL
INT	INTERCOM
KP	KICKPLATE
L/PT	LIGHT - PELMET TASK LIGHT
LS/P	LIGHT SWITCH - PELMET TASK LIGHT
LS/R	LIGHT SWITCH - ROOM
OP	OBSERVATION PANEL
OP/R	OBSERVATION PANEL - RADIATION SHIELDING
PDU/M	PEDESTAL DRAWER UNIT - MOBILE
PO/2E	POWER OUTLET - EMERGENCY, DOUBLE
PO/2U	UNINTERRUPTED POWER SUPPLY - DOUBLE
PO/C	POWER OUTLET - CLEANER'S
PRT/N	PRINTER - NETWORKED
SK4	FLOOR VINYL COVERED SKIRTING
SUOA	SHELVING UNIT - OVER BENCH, ADJUSTABLE
TP/HS	TELEPHONE - HANDSET, STANDARD
V1	VINYL FLOORING, STANDARD SLIP RESISTANT
WPF	WALL PAINT FINISH

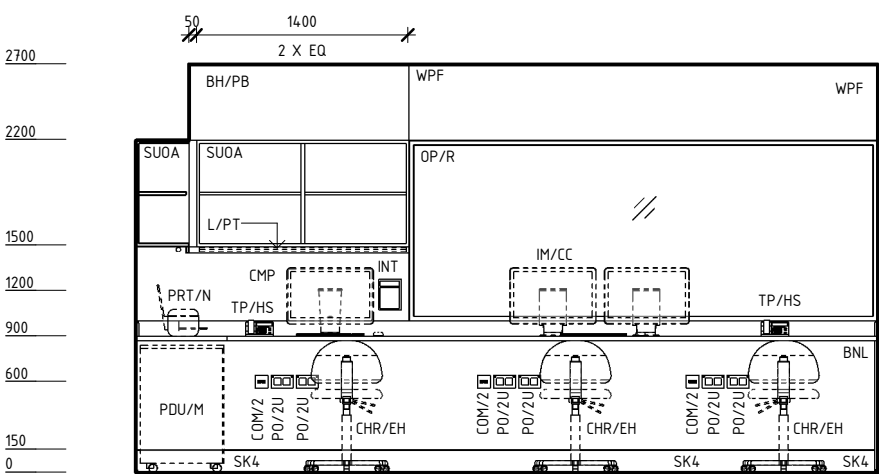
NOTE:
RADIATION SHIELDING REQUIREMENTS TO BE PROVIDED BY
A QUALIFIED RADIATION SHIELDING CONSULTANT



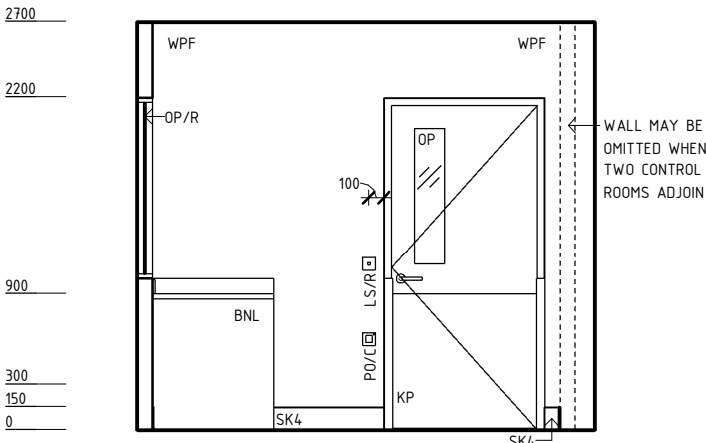
PLAN



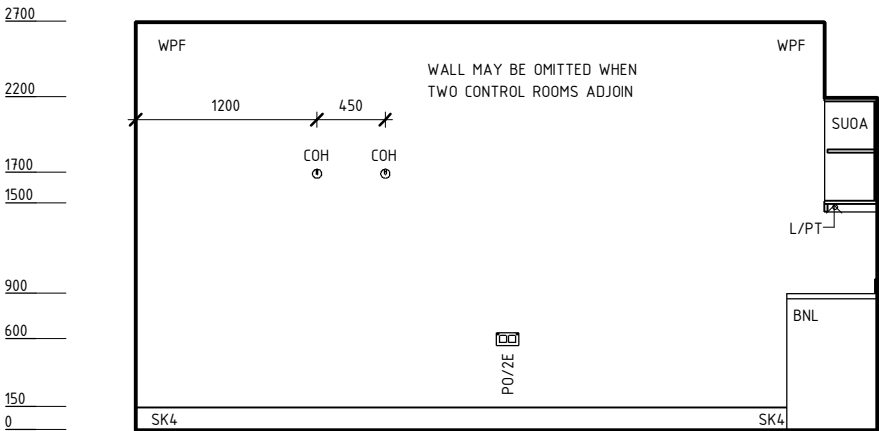
ELEVATION 1






ELEVATION 2



ELEVATION 3



ELEVATION 4

REV	DESCRIPTION	DATE	BY	REV	DESCRIPTION	DATE	BY	COMPATIBILITY											
1	FIRST ISSUE	24.10.10	LL	4	GENERAL REVISION	05.10.22	BK												
2	GENERAL REVISION	30.08.11	EF																
3	GENERAL REVISION	31.10.12	CT																
 <div>International Health Facility Guidelines</div>								International Health Facility Guidelines at: www.healthdesign.com.au/iHFG Editable version of Standard Components on Health Facility Briefing System (HFBS) at: www.healthdesign.com.au ©TAHP!							DESIGNED	APPROVED	DATE	SCALE(S)	SHEET
								BK	RH	05.10.22	1 : 50	1 OF 2							
								REVIT FILE NAME		PAPER DRAWING ID		ISSUE							
								ancrt-i		ancrt-i-1		4							



International Health
Facility Guidelines

International Health Facility Guidelines at:
www.healthdesign.com.au/iHFG
Editable version of Standard Components on
Health Facility Briefing System (HFBS) at:
www.healthdesign.com.au ©TAHPI



This document is for advisory purpose only

iHFG Standard Components

Room Layout Sheet

Room Name

Angiography Control / Reporting Room

RLS Room Code

ancrt-i

RDS Room Code

ancrt-i

GENERAL NOTES:

THIS DRAWING TO BE READ IN CONJUNCTION WITH R.D.S.
(ROOM DATA SHEETS) WHICH TAKES PRECEDENCE.

ALL SERVICES INDICATED ARE INDICATIVE AND SUBJECTED TO
DETAILED PROJECT SPECIFIC ENGINEERING DESIGN.

CEILING LEGEND:

- ACT-PCS
- ACOUSTIC CEILING TILES WITH POWDERCOAT ALUMINIUM
CORNICE, FLUSHED AGAINST WALL
- BH/PB
- PLASTERBOARD BULKHEAD, PAINT FINISH

PB

3000

CEILING TYPE
HEIGHT ABOVE F.F.L.

ELECTRICAL LEGEND:

- L/LL

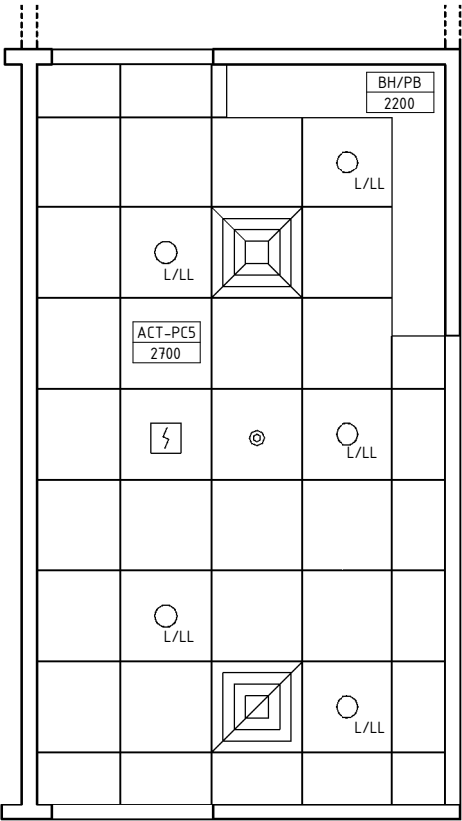
LIGHT - LED LIGHT

MECHANICAL LEGEND:

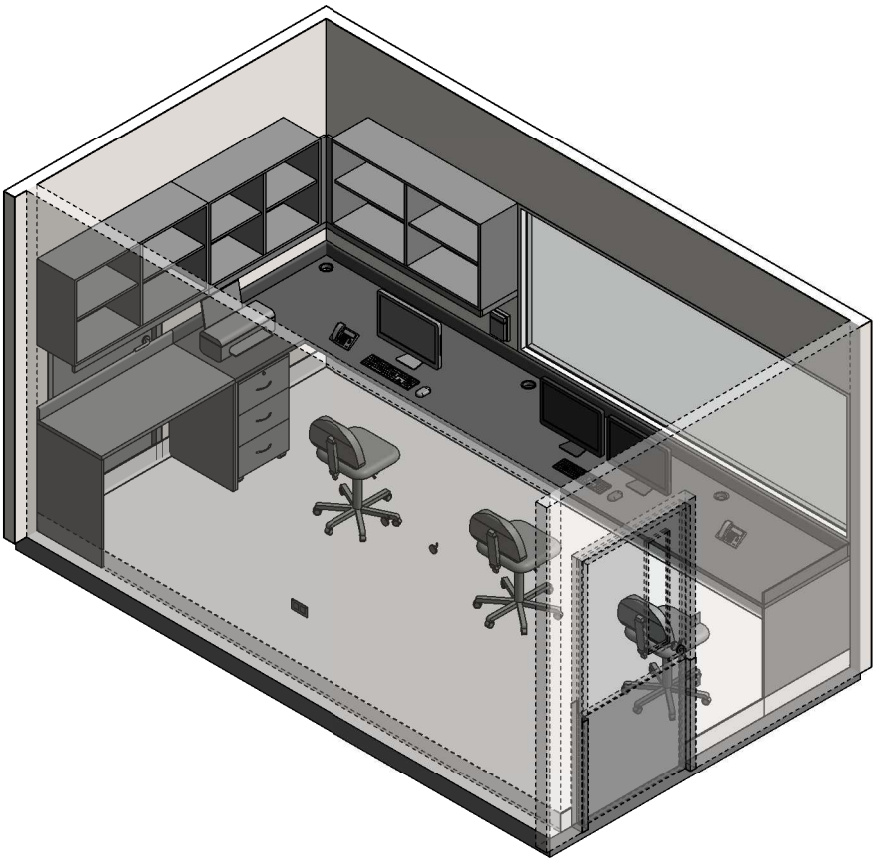
- SUPPLY AIR GRILLE
- RETURN AIR GRILLE

FIRE SERVICES LEGEND:

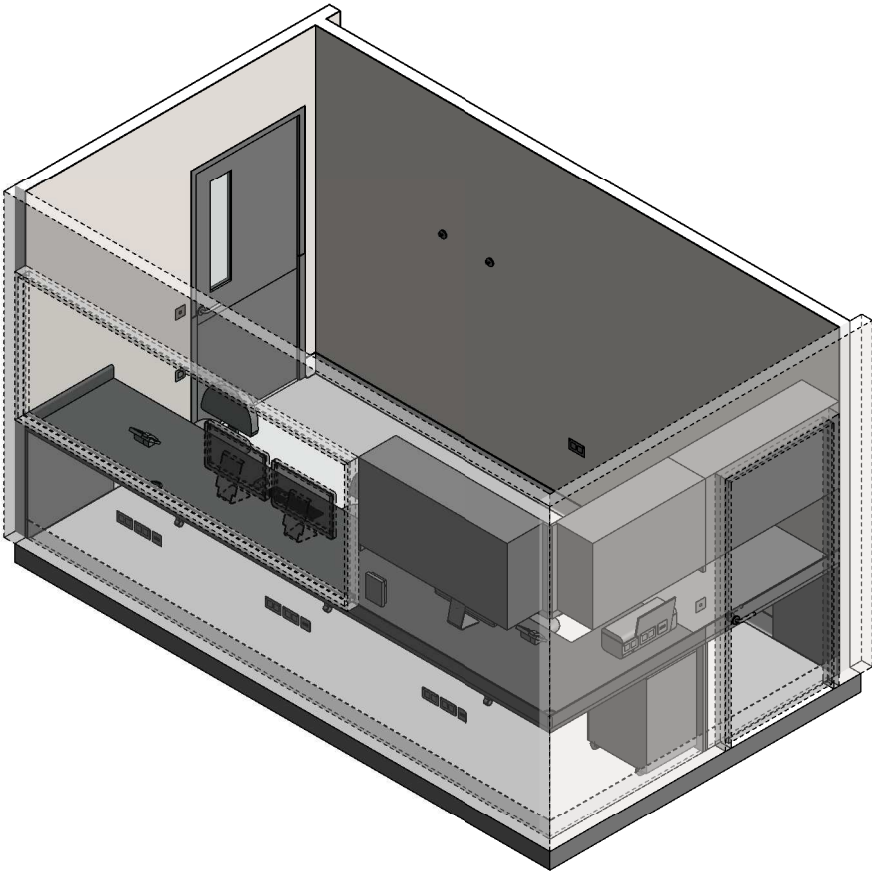
- SMOKE DETECTOR
- SPRINKLER



REFLECTED CEILING PLAN



ISOMETRIC VIEW 01



ISOMETRIC VIEW 02

REV	DESCRIPTION	DATE	BY	REV	DESCRIPTION	DATE	BY	COMPATIBILITY
1	FIRST ISSUE	24.10.10	LL	4	GENERAL REVISION	05.10.22	BK	<div>iHFG</div>
2	GENERAL REVISION	30.08.11	EF					
3	GENERAL REVISION	31.10.12	CT					
<div><div><div>iHFG</div><div>International Health Facility Guidelines</div></div><div>International Health Facility Guidelines at: www.healthdesign.com.au/iHFG Editable version of Standard Components on Health Facility Briefing System (HFBS) at: www.healthdesign.com.au ©TAHPI</div></div>								<div><div>DESIGNED</div><div>BK</div></div> <div><div>APPROVED</div><div>RH</div></div> <div><div>DATE</div><div>05.10.22</div></div> <div><div>SCALE(S)</div><div>1 : 50</div></div> <div><div>SHEET</div><div>2 OF 2</div></div>
<div><div><div>ISO9001</div><div>QUALITY</div><div>MANAGEMENT SYSTEM</div></div></div>								<div><div>REVIT FILE NAME</div><div>ancrt-i</div></div> <div><div>PAPER DRAWING ID</div><div>ancrt-i-2</div></div> <div><div>ISSUE</div><div>4</div></div>

This document is for advisory purpose only