

iHFG Standard Components

Room Layout Sheet

Room Name **Bay - Vending Machine, 3m2**

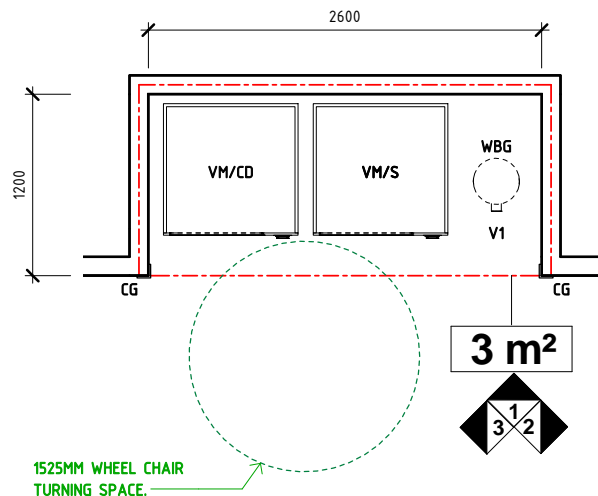
RLS Room Code

bvm-3-i

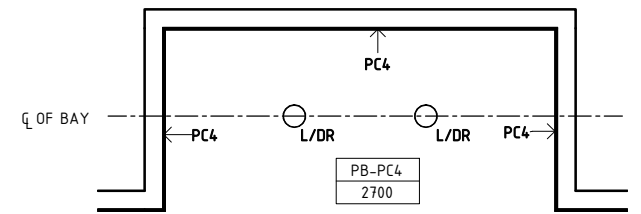
RDS Room Code

bvm-3-i

- CG CORNER GUARD
- COM/2 COMMUNICATION OUTLET - DOUBLE
- GPO/2 GENERAL POWER OUTLET - DOUBLE
- L/DR LIGHT - DOWNLIGHT, RECESSED
- PB PLASTERBOARD FLUSH SET CEILING, PAINT FINISH
- PC4 POWDERCOAT ALUMINIUM CORNICE, SHADOW LINE
- SK4 FLOOR VINYL COVERED SKIRTING
- V1 VINYL FLOORING, STANDARD SLIP RESISTANT
- VM/CD VENDING MACHINE - COLD DRINKS
- VM/S VENDING MACHINE - SNACKS
- WBG WASTE BIN - GENERAL
- WPF WALL PAINT FINISH



PLAN



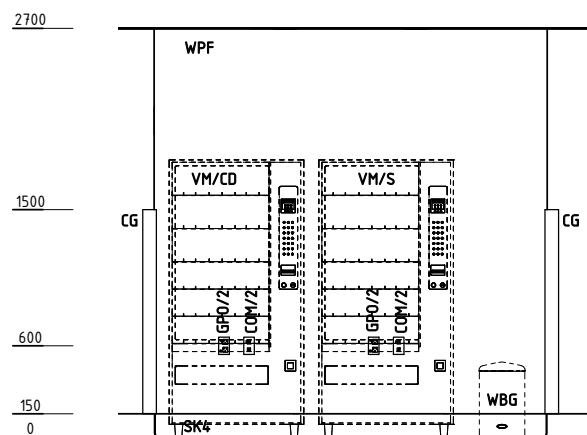
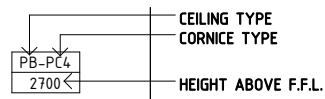
REFLECTED CEILING PLAN

GENERAL NOTES:

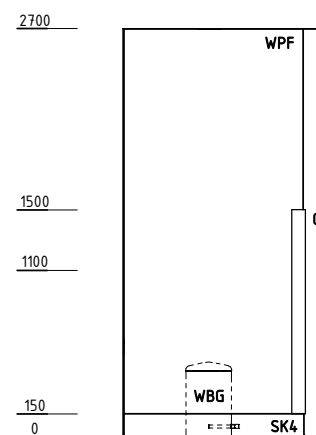
THIS DRAWING TO BE READ IN CONJUNCTION WITH R.D.S. (ROOM DATA SHEETS) WHICH TAKES PRECEDENCE.

ALL SERVICES INDICATED ARE INDICATIVE AND SUBJECT TO DETAILED PROJECT SPECIFIC ENGINEERING DESIGN.

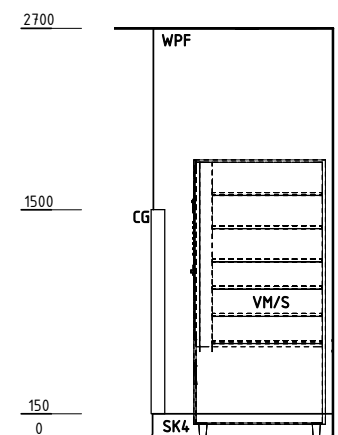
CEILING LEGEND:



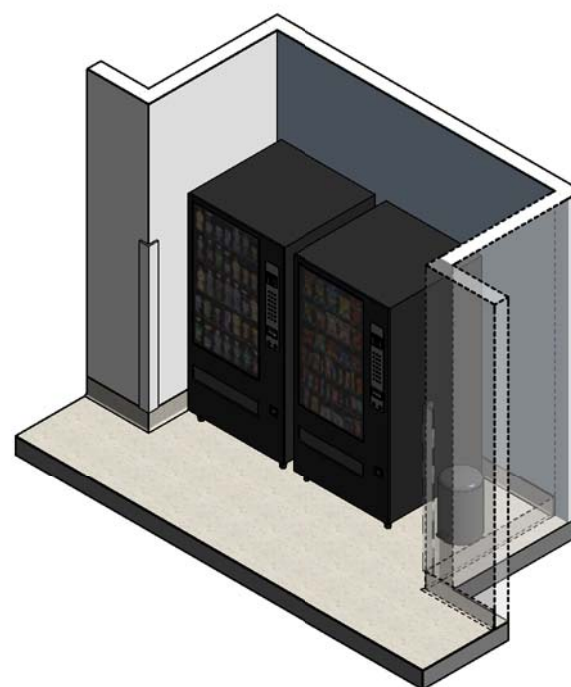
ELEVATION 1



ELEVATION 2



ELEVATION 3



ISOMETRIC VIEW



PERSPECTIVE VIEW

REV	DESCRIPTION	DATE	BY	REV	DESCRIPTION	DATE	BY	COMPATIBILITY																				
1	FIRST ISSUE	15.09.16	JR					iHFG AHFG ADA FGI HBN HTM HAAD																				
								<table border="1"> <tr> <td>DESIGNED</td> <td>APPROVED</td> <td>DATE</td> <td>SCALE(S)</td> <td>SHEET</td> </tr> <tr> <td>JR</td> <td>DB</td> <td>26.07.16</td> <td>1 : 50</td> <td>1 OF 1</td> </tr> <tr> <td colspan="2">REVIT FILE NAME</td> <td colspan="2">PAPER DRAWING ID</td> <td>ISSUE</td> </tr> <tr> <td colspan="2">bvm-3-i</td> <td colspan="2">bvm-3-i-1</td> <td>1</td> </tr> </table>	DESIGNED	APPROVED	DATE	SCALE(S)	SHEET	JR	DB	26.07.16	1 : 50	1 OF 1	REVIT FILE NAME		PAPER DRAWING ID		ISSUE	bvm-3-i		bvm-3-i-1		1
DESIGNED	APPROVED	DATE	SCALE(S)	SHEET																								
JR	DB	26.07.16	1 : 50	1 OF 1																								
REVIT FILE NAME		PAPER DRAWING ID		ISSUE																								
bvm-3-i		bvm-3-i-1		1																								



International Health Facility Guidelines at:
www.healthdesign.com.au/iHFG
 Editable version of Standard Components on Health Facility Briefing System (HFBS) at:
www.healthdesign.com.au/TAHPI





The International Health Facility Guidelines recommends the use of HFBS “Health Facility Briefing System” to edit all room data sheet information for your project.

HFBS provides edit access to all iHFG standard rooms, and departments, and more than 100 custom report templates.

HFBS Health Facility Briefing System



Briefing Module

The Health Facility Briefing System (HFBS) has numerous modules available via annual subscription. It suits healthcare Architects, Medical Planners, Equipment Planners Project Managers and Health Authorities.

Use the HFBS Briefing Module to quickly drag in health facility departments or pre-configured room templates from the iHFG standard, edit the room features such as finishes, furniture, fittings, fixtures, medical equipment, engineering services. The system can print or download as PDF more than 100 custom reports including room data sheets, schedules, and more...

To learn more about the HFBS web-based Healthcare Briefing and Design Software and to obtain editable versions of the “Standard Components” including Room Data Sheets (RDS) and Room Layout Sheets (RLS) offered on the iHFG website, signup for HFBS using the link below.

Get Started Now:
hfbs.healthdesign.com.au

- ✓ iHFG Room Data Sheets and Departments are instantly editable in the HFBS software available online.
- ✓ You can access hundreds of report templates to print your iHFG room data in HFBS.
- ✓ HFBS has a onetime free 3 day trial available to all new users.

Get Started Now:
hfbs.healthdesign.com.au



HFBS

Health Facility Briefing System

hfbsinfo.com | techsupport@healthdesign.com.au