

iHFG Standard Components

Room Layout Sheet

Room Name **Change - Patient (Male/ Female), 12 m²**

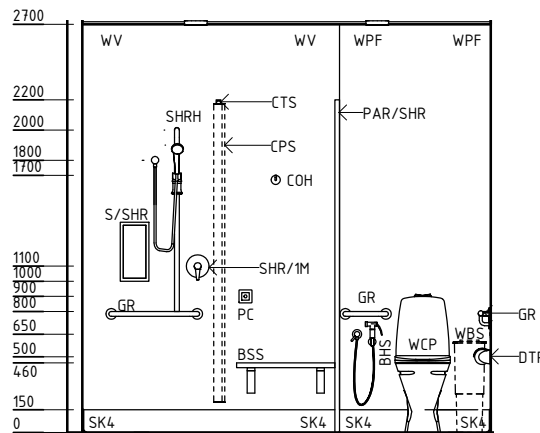
RLS Room Code

chpt-12-i

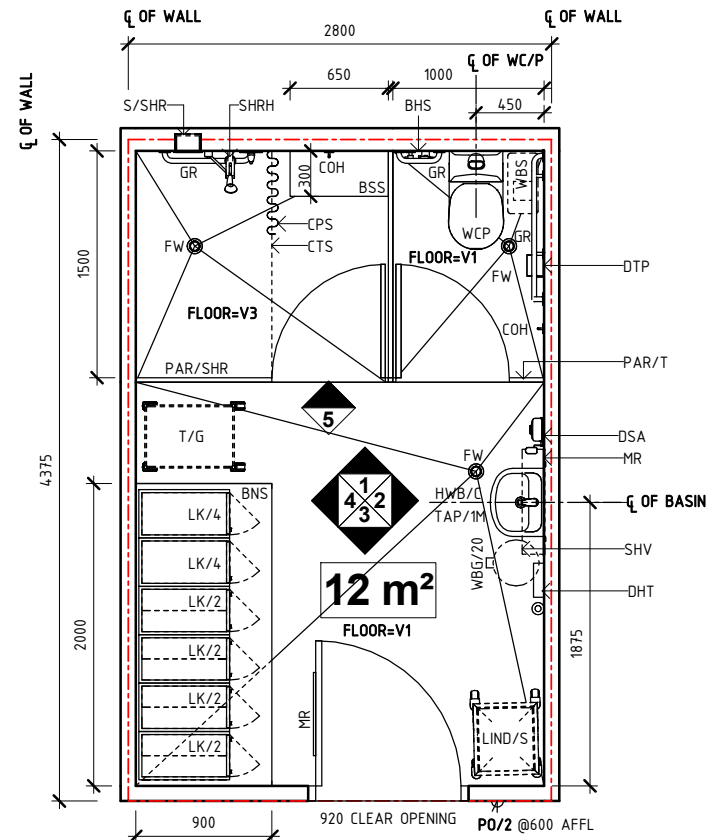
RDS Room Code

chpt-12-i

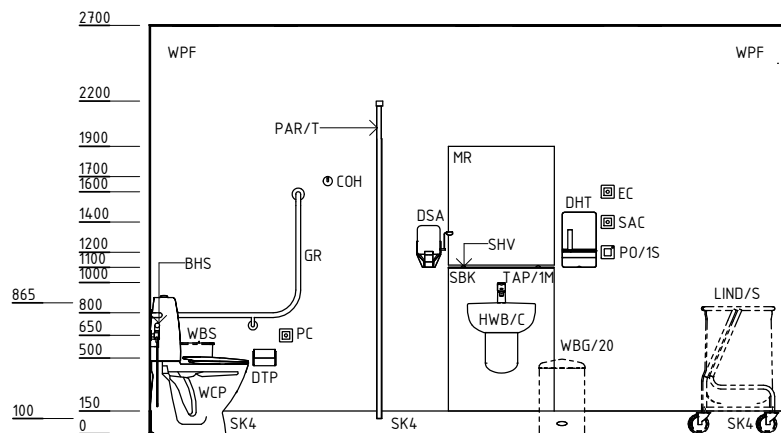
- BHS BIDET HANDSET
- BNS BENCH SEAT
- BSS BENCH SEAT, SHOWER
- COH COAT HOOK
- CPS CURTAIN - PRIVACY SCREEN
- CTS CURTAIN TRACK - SHOWER
- DHT DISPENSER - PAPER HAND TOWEL
- DSA DISPENSER - SOAP, ANTISEPTIC
- DTP DISPENSER - TOILET PAPER
- EC EMERGENCY CALL
- FW FLOOR WASTE
- GR GRAB RAIL
- HWB/C HAND WASH BASIN - TYPE 'C'
- KP KICKPLATE
- LIND/S LINEN CARRIER - DIRTY, SINGLE
- LK/2 LOCKER - 2 TIER
- LK/4 LOCKER - 4 TIER (1/4 SIZE)
- LS/R LIGHT SWITCH - ROOM
- MR MIRROR
- PAR/SHR PARTITIONS - SHOWER
- PAR/T PARTITIONS - TOILET
- PC PATIENT CALL
- PO/1S POWER OUTLET - SPECIAL
- PO/2 POWER OUTLET - DOUBLE
- S/SHR SOAP/ SHAMPOO HOLDER - RECESSED
- SAC STAFF ASSIST CALL
- SBK SPLASHBACK
- SHR/1M SHOWER - SINGLE MIXER
- SHRH SHOWER - HAND HELD SHOWER HEAD
- SHV SHELF - VANITY
- SK4 FLOOR VINYL COVERED SKIRTING
- T/G TROLLEY - GOWNS
- TAP/1M TAPWARE - SINGLE MIXER
- V1 VINYL FLOORING, STANDARD SLIP RESISTANT
- V3 VINYL FLOORING, NON SLIP - STUDDED
- WBG/20 WASTE BIN - GENERAL, 20 LITRE
- WBS WASTE BIN - SANITARY
- WCP WATER CLOSET - PATIENT
- WPF WALL PAINT FINISH
- WV WALL VINYL



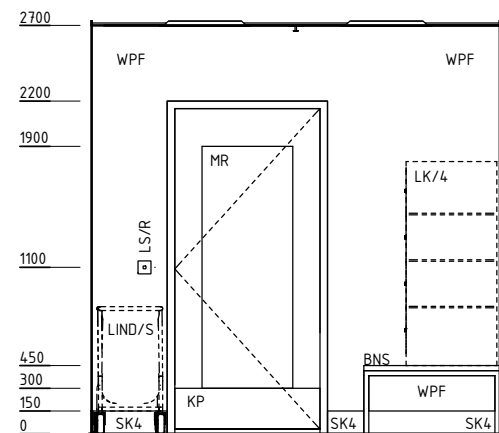
ELEVATION 1



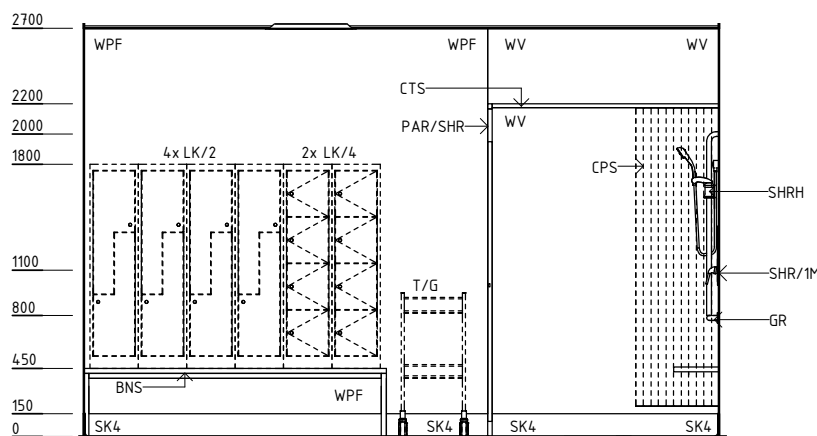
PLAN



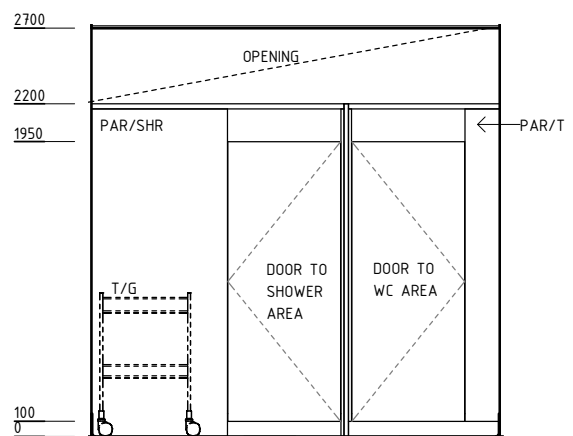
ELEVATION 2



ELEVATION 3



ELEVATION 4



ELEVATION 5

REV	DESCRIPTION	DATE	BY	REV	DESCRIPTION	DATE	BY	COMPATIBILITY
1	FIRST ISSUE	02.10.15	ASD					
2	GENERAL REVISION	27.01.23	AM					



International Health Facility Guidelines at:
www.healthdesign.com.au/iHFG
 Editable version of Standard Components on
 Health Facility Briefing System (HFBS) at:
www.healthdesign.com.au/TAHPI



DESIGNED	APPROVED	DATE	SCALE(S)	SHEET
AM	SA	27.01.23	1 : 50	1 OF 2
REVIT FILE NAME		PAPER DRAWING ID		ISSUE
chpt-12-i		chpt-12-i-1		2

iHFG Standard Components

Room Layout Sheet

RLS Room Code

chpt-12-i

RDS Room Code

chpt-12- i

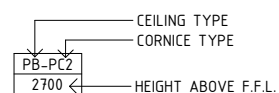
Room Name **Change - Patient (Male/ Female), 12 m²**

GENERAL NOTES:

THIS DRAWING TO BE READ IN CONJUNCTION WITH R.D.S. (ROOM DATA SHEETS) WHICH TAKES PRECEDENCE.

ALL SERVICES INDICATED ARE INDICATIVE AND SUBJECT TO DETAILED PROJECT SPECIFIC ENGINEERING DESIGN.

CEILING LEGEND:



WPT-PC4 WATER RESISTANT, DROP IN TILES WITH POWDERCOAT ALUMINIUM CORNICE, SHADOW LINE

TILE CEILING GRID (600 x 600)

GRID LINE

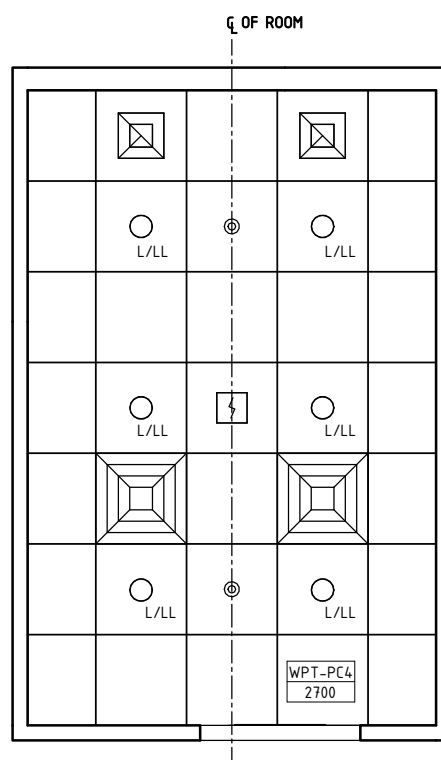
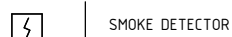
ELECTRICAL LEGEND:



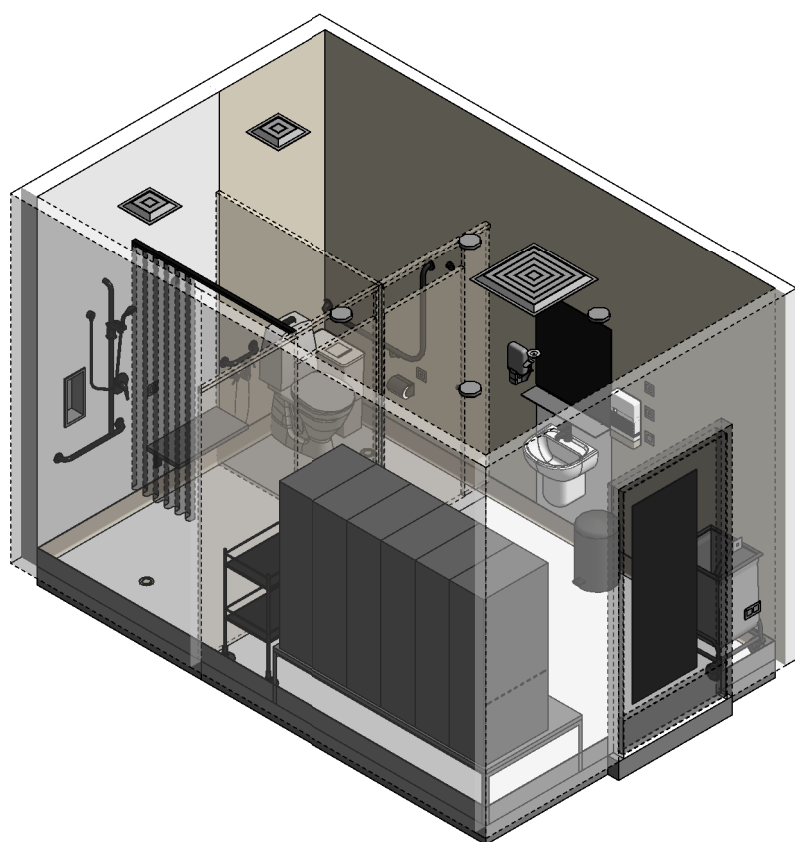
MECHANICAL LEGEND:



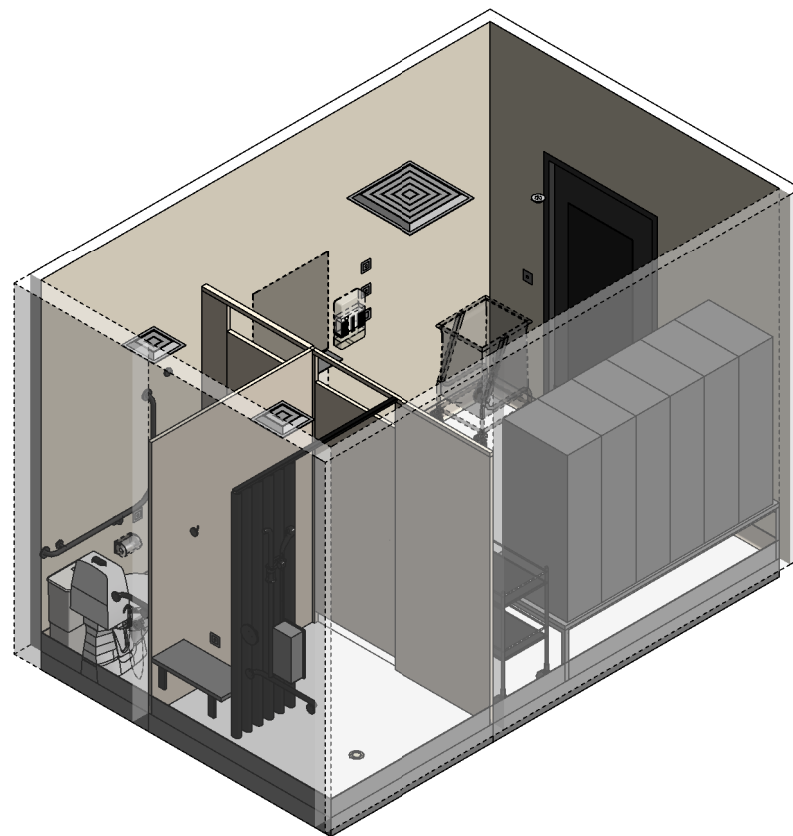
FIRE SERVICES LEGEND:



REFLECTED CEILING PLAN



ISOMETRIC VIEW 01



ISOMETRIC VIEW 02

REV	DESCRIPTION	DATE	BY	REV	DESCRIPTION	DATE	BY	COMPATIBILITY
1	FIRST ISSUE	02.10.15	ASD					
2	GENERAL REVISION	27.01.23	AM					



International Health Facility Guidelines at:
www.healthdesign.com.au/iHFG
Editable version of Standard Components on
Health Facility Briefing System (HFBS) at:
www.healthdesign.com.au @TAHPI



DESIGNED	APPROVED	DATE	SCALE(S)	SHEET
AM	SA	27.01.23	1 : 50	2 OF 2
REVIT FILE NAME		PAPER DRAWING ID		ISSUE
chpt-12-i		chpt-12-i-2		2

This document is for advisory purpose only