

# iHFG Standard Components

## Room Layout Sheet

RLS Room Code

chst-35-i

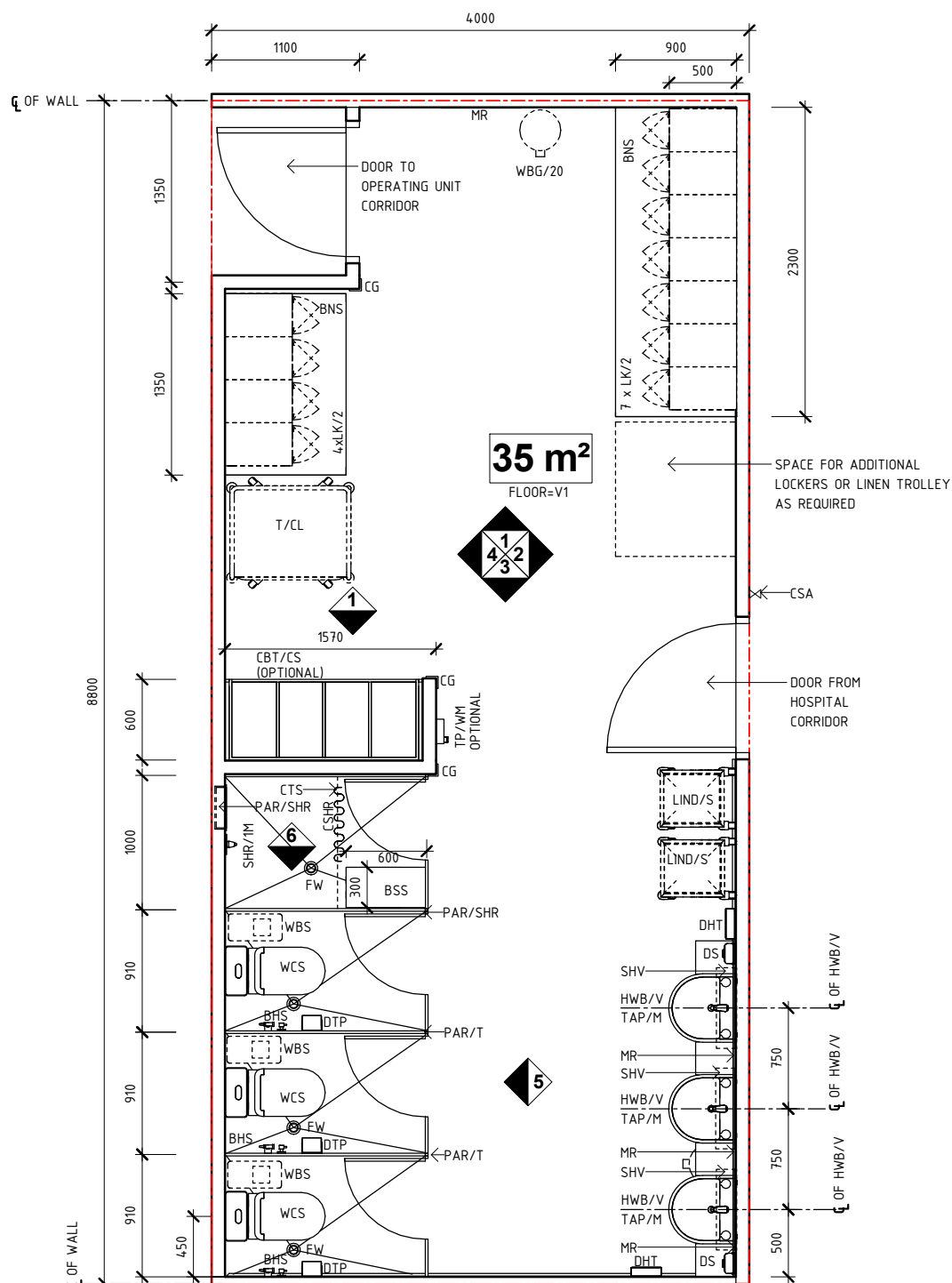
RDS Room Code

chst-35-i

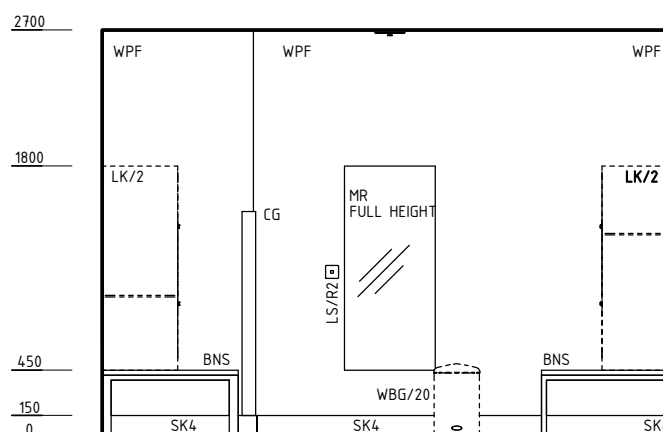
Room Name

Change - Staff (Male/ Female), 35m<sup>2</sup>

BHS	BIDET HANDSET
BNS	BENCH SEAT
BSS	BENCH SEAT, SHOWER
CBT/CS	CABINET - COAT/SHOES VALET
CG	CORNER GUARD
CSA	CARD ACCESS
CSHR	CURTAIN - SHOWER
CTS	CURTAIN TRACK - SHOWER
DHT	DISPENSER - PAPER HAND TOWEL
DS	DISPENSER - SOAP
DTP	DISPENSER - TOILET PAPER
FW	FLOOR WASTE
HWB/V	HAND WASH BASIN - VANITY
LIND/S	LINEN CARRIER - DIRTY, SINGLE
LK/2	LOCKER - 2 TIER
LS/R2	LIGHT SWITCH - ROOM, 2 WAY
MR	MIRROR
PAR/SHR	PARTITIONS - SHOWER
PAR/T	PARTITIONS - TOILET
SHR/1M	SHOWER - SINGLE MIXER
SHV	SHELF - VANITY
SK4	FLOOR VINYL COVERED SKIRTING
T/CL	TROLLEY - CLEAN LINEN
TAP/M	TAPWARE - MIXER
TP/WM	TELEPHONE - WALL MOUNTED
V1	VINYL FLOORING, STANDARD SLIP RESISTANT
WBG/20	WASTE BIN - GENERAL, 20 LITRE
WBS	WASTE BIN - SANITARY
WCS	WATER CLOSET - STANDARD
WPF	WALL PAINT FINISH



PLAN



ELEVATION 1

REV	DESCRIPTION	DATE	BY	REV	DESCRIPTION	DATE	BY	COMPATIBILITY
1	FIRST ISSUE	24.10.10	CC	4	GENERAL REVISION	25.05.23	SS	
2	GENERAL REVISION	30.08.11	HMC					
3	GENERAL REVISION	31.10.12	KC					



International Health Facility Guidelines at:  
www.healthdesign.com.au/iHFG  
Editable version of Standard Components on  
Health Facility Briefing System (HFBS) at:  
www.healthdesign.com.au@TAHPI



DESIGNED	APPROVED	DATE	SCALE(S)	SHEET
SS	SA	25.05.23	1 : 50	1 OF 4
REVIT FILE NAME		PAPER DRAWING ID		ISSUE
chst-35-i		chst-35-i-1		4

This document is for advisory purpose only

# iHFG Standard Components

## Room Layout Sheet

RLS Room Code

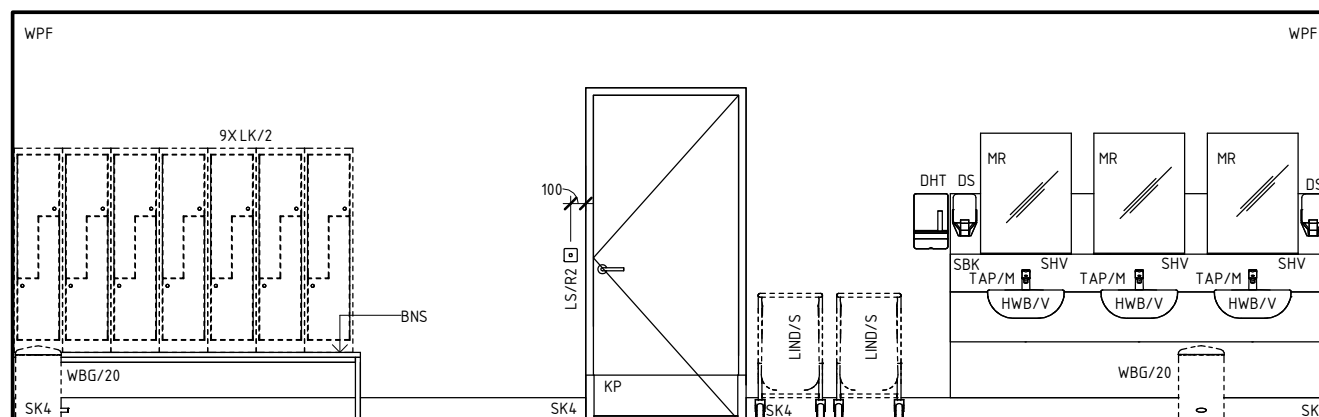
chst-35-i

RDS Room Code

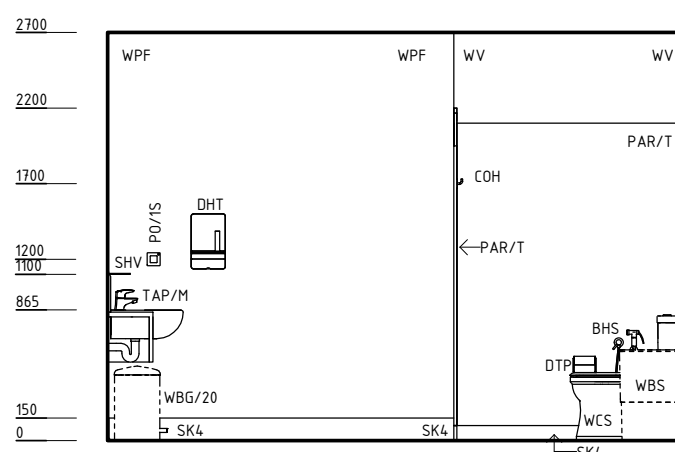
chst-35-i

Room Name **Change - Staff (Male/ Female), 35m2**

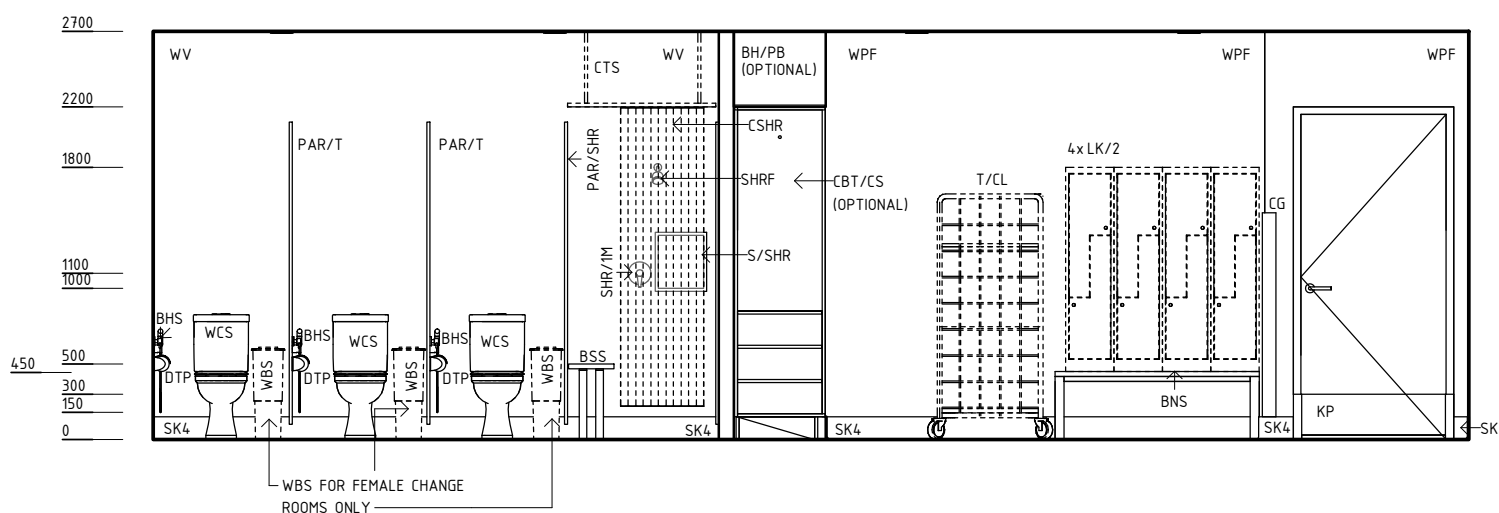
BH/PB	BULKHEAD - PLASTERBOARD, PAINT FINISH	2700
BHS	BIDET HANDSET	
BNS	BENCH SEAT	2200
BSS	BENCH SEAT, SHOWER	
CBT/CS	CABINET - COAT/SHOES VALET	1900
CG	CORNER GUARD	1800
COH	COAT HOOK	
COM/1	COMMUNICATION OUTLET - SINGLE	1500
CSHR	CURTAIN - SHOWER	1200
CTS	CURTAIN TRACK - SHOWER	1100
DHT	DISPENSER - PAPER HAND TOWEL	865
DS	DISPENSER - SOAP	
DTP	DISPENSER - TOILET PAPER	
HGR	HANGING RAIL	450
HWB/V	HAND WASH BASIN - VANITY	300
KP	KICKPLATE	150
LIND/S	LINEN CARRIER - DIRTY, SINGLE	0
LK/2	LOCKER - 2 TIER	
LS/R2	LIGHT SWITCH - ROOM, 2 WAY	
MR	MIRROR	
PAR/SHR	PARTITIONS - SHOWER	
PAR/T	PARTITIONS - TOILET	
PO/1S	POWER OUTLET - SPECIAL	
S/SHR	SOAP/ SHAMPOO HOLDER - RECESSED	
SBK	SPLASHBACK	
SHR/1M	SHOWER - SINGLE MIXER	
SHRF	SHOWER - FIXED ROSE	
SHV	SHELF - VANITY	
SK4	FLOOR VINYL COVED SKIRTING	
T/CL	TROLLEY - CLEAN LINEN	
TAP/M	TAPWARE - MIXER	
TP/WM	TELEPHONE - WALL MOUNTED	
WBG/20	WASTE BIN - GENERAL, 20 LITRE	
WBS	WASTE BIN - SANITARY	
WCS	WATER CLOSET - STANDARD	
WPF	WALL PAINT FINISH	
WV	WALL VINYL	



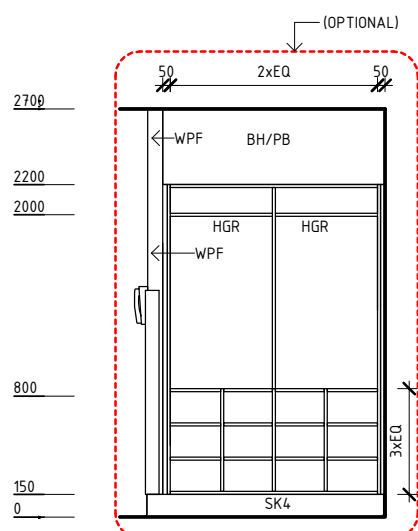
**ELEVATION 2**



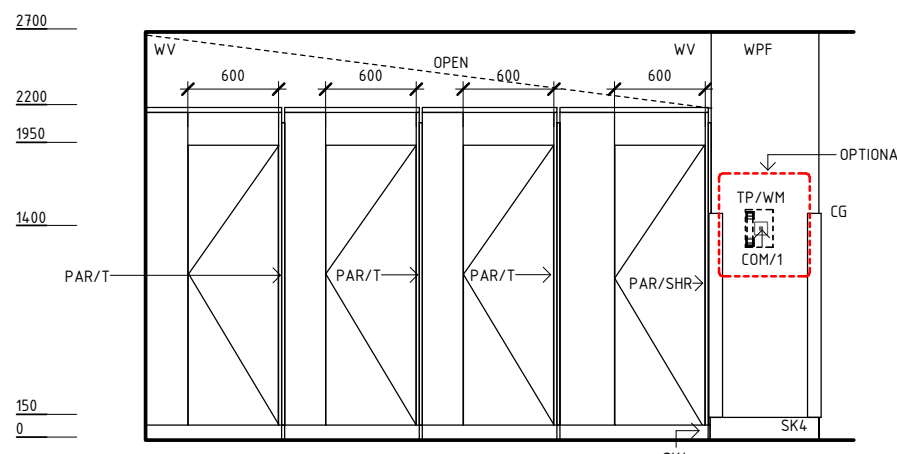
**ELEVATION 3**



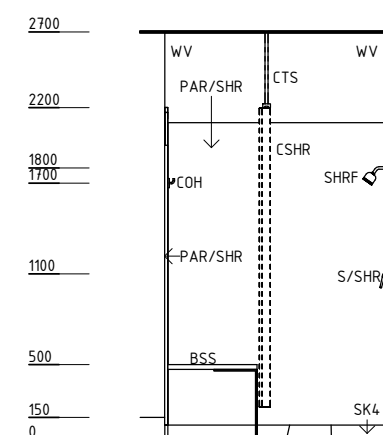
**ELEVATION 4**



**ELEVATION 5**



**ELEVATION 6**



**ELEVATION 7**

REV	DESCRIPTION	DATE	BY	REV	DESCRIPTION	DATE	BY	COMPATIBILITY
1	FIRST ISSUE	24.10.10	CC	4	GENERAL REVISION	25.05.23	SS	
2	GENERAL REVISION	30.08.11	HMC					
3	GENERAL REVISION	31.10.12	KC					

# iHFG Standard Components

## Room Layout Sheet

RLS Room Code

chst-35-i

Room Name **Change - Staff (Male/ Female), 35m2**

RDS Room Code

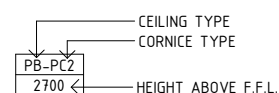
chst-35-i

### GENERAL NOTES:

THIS DRAWING TO BE READ IN CONJUNCTION WITH R.D.S. (ROOM DATA SHEETS) WHICH TAKES PRECEDENCE.

ALL SERVICES INDICATED ARE INDICATIVE AND SUBJECTED TO DETAILED PROJECT SPECIFIC ENGINEERING DESIGN.

### CEILING LEGEND:



- BH/PB PLASTERBOARD BULKHEAD, PAINT FINISH
- WPT-PC5 WATER RESISTANT, DROP IN TILES WITH POWDERCOAT ALUMINIUM CORNICE, FLUSHED AGAINST WALL
- TILE CEILING GRID (600 x 600)
- GRID LINE

### ELECTRICAL LEGEND:

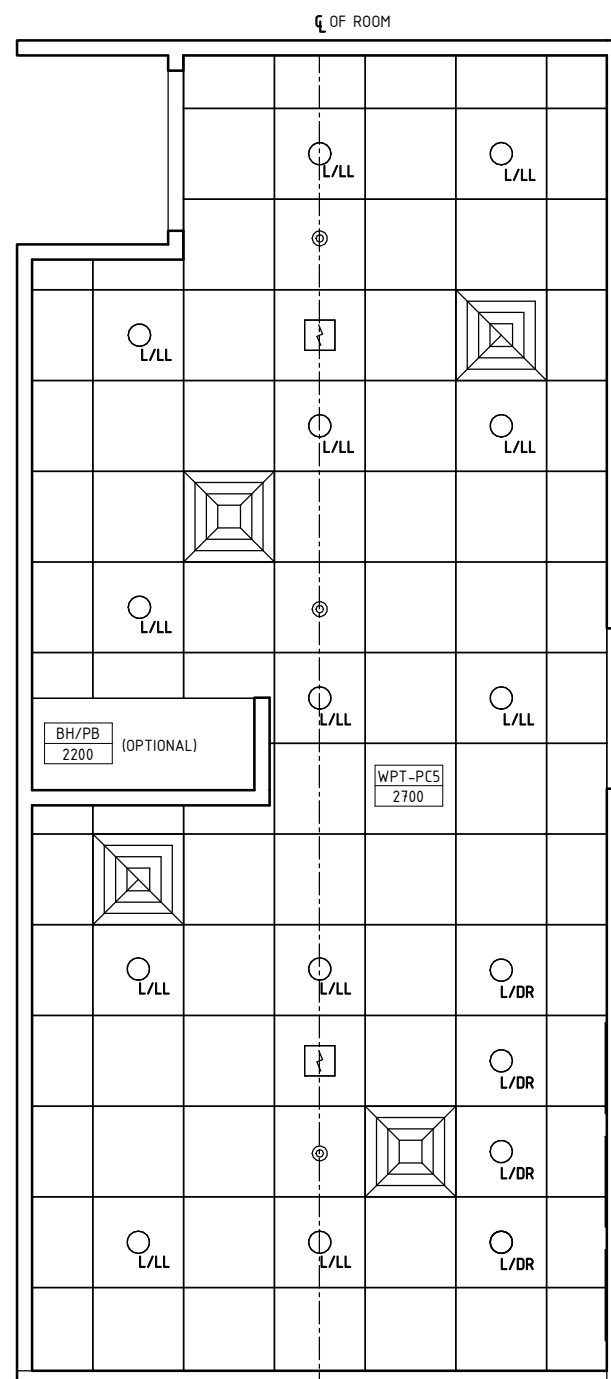
- LIGHT - DOWNLIGHT, RECESSED
- LIGHT - LED LIGHT

### MECHANICAL LEGEND:

- SUPPLY AIR GRILLE
- EXHAUST GRILLE

### FIRE SERVICES LEGEND:

- SMOKE DETECTOR
- SPRINKLER



**REFLECTED CEILING PLAN**

REV	DESCRIPTION	DATE	BY	REV	DESCRIPTION	DATE	BY	COMPATIBILITY
1	FIRST ISSUE	24.10.10	CC	4	GENERAL REVISION	25.05.23	SS	iHFG
2	GENERAL REVISION	30.08.11	HMC					
3	GENERAL REVISION	31.10.12	KC					

# iHFG Standard Components

Room Layout Sheet

RLS Room Code

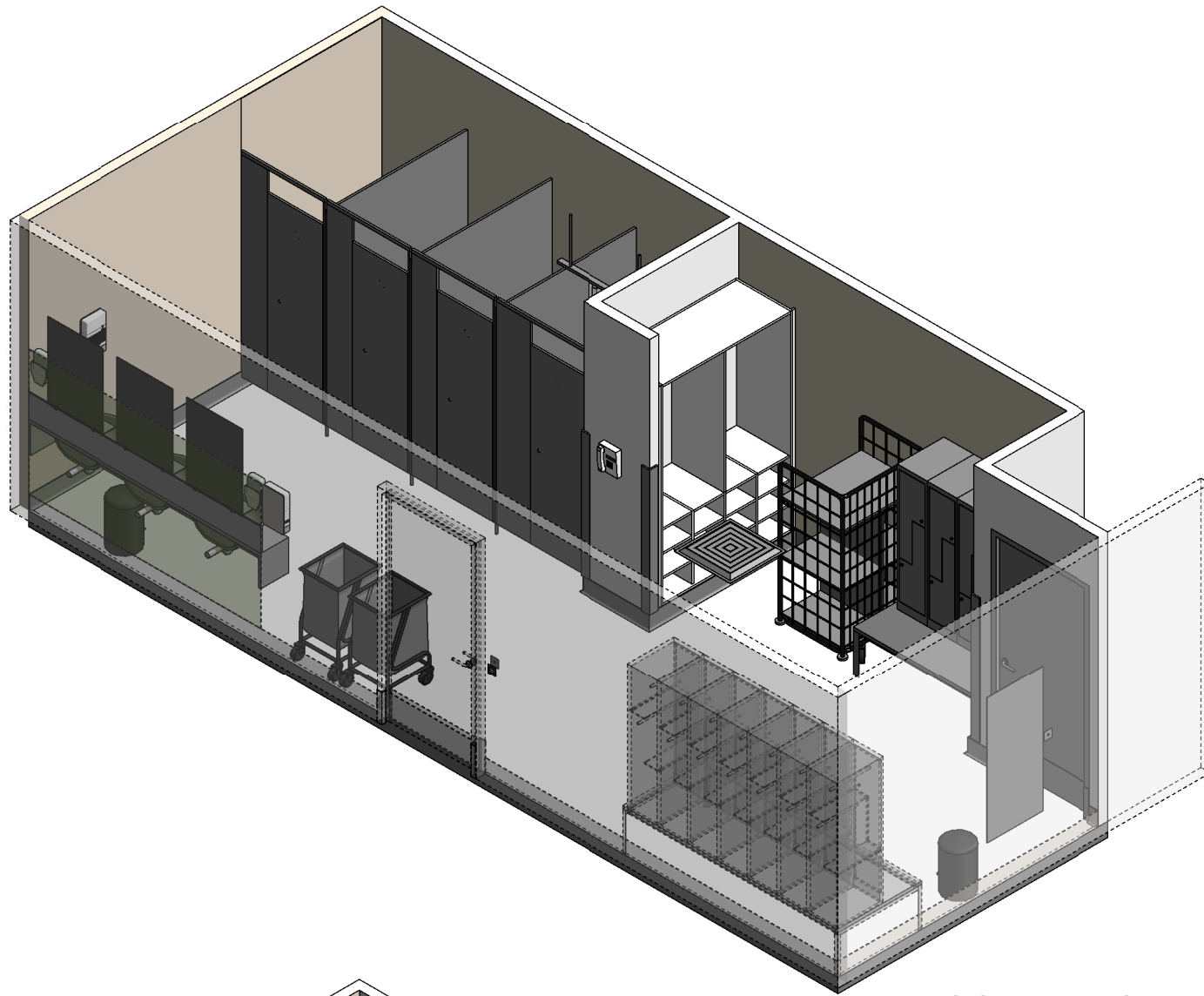
chst-35-i

RDS Room Code

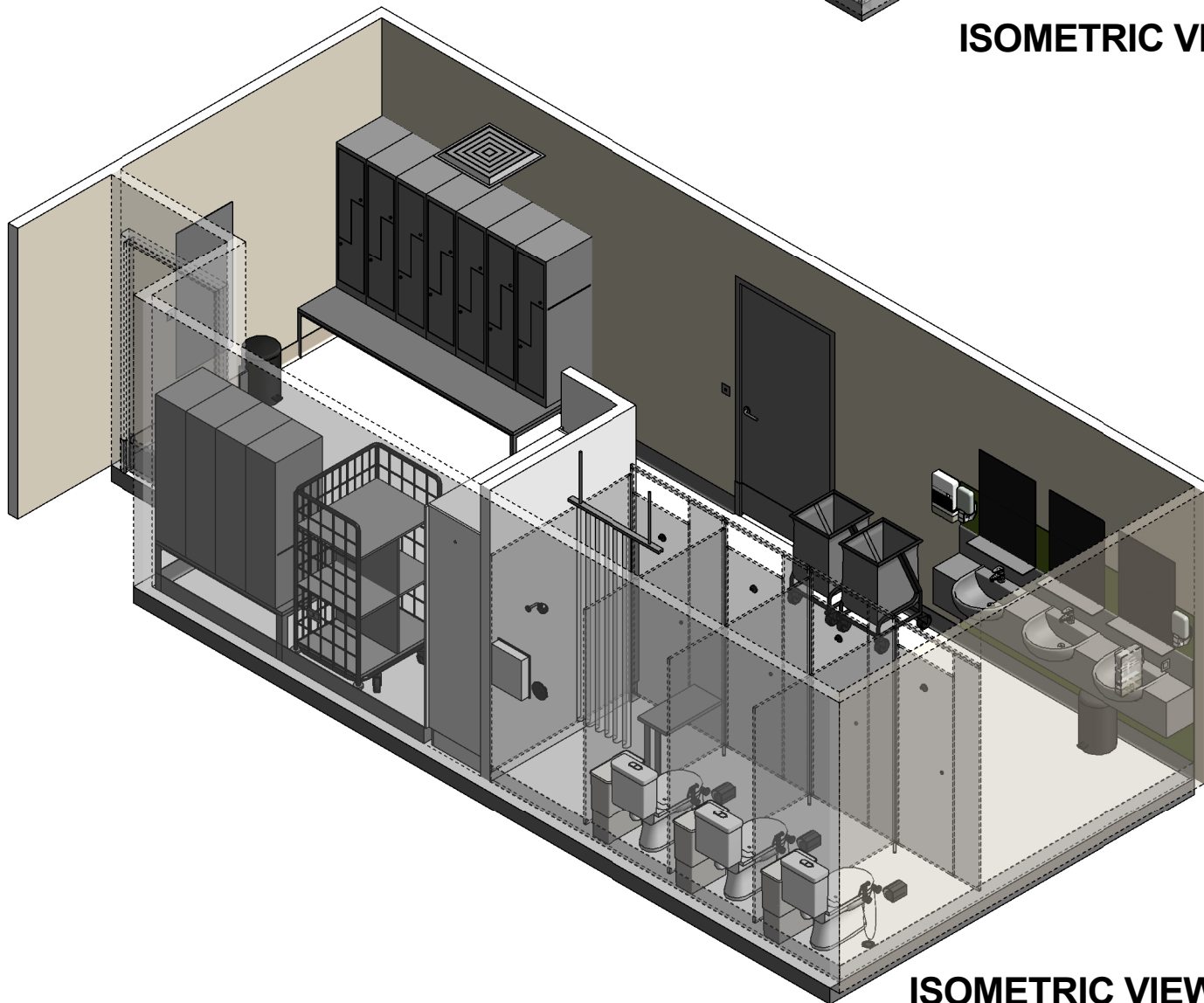
chst-35-i

Room Name


Change - Staff (Male/ Female), 35m2



ISOMETRIC VIEW 01



ISOMETRIC VIEW 02

REV	DESCRIPTION	DATE	BY	REV	DESCRIPTION	DATE	BY	COMPATIBILITY															
1	FIRST ISSUE	24.10.10	CC	4	GENERAL REVISION	25.05.23	SS																
2	GENERAL REVISION	30.08.11	HMC																				
3	GENERAL REVISION	31.10.12	KC																				
								<table border="1"> <thead> <tr> <th>DESIGNED</th> <th>APPROVED</th> <th>DATE</th> <th>SCALE(S)</th> <th>SHEET</th> </tr> </thead> <tbody> <tr> <td>SS</td> <td>SA</td> <td>25.05.23</td> <td></td> <td>4 OF 4</td> </tr> <tr> <td colspan="2">                     REVIT FILE NAME                      chst-35-i                 </td> <td colspan="2">                     PAPER DRAWING ID                      chst-35-i-4                 </td> <td>                     ISSUE                      4                 </td> </tr> </tbody> </table>	DESIGNED	APPROVED	DATE	SCALE(S)	SHEET	SS	SA	25.05.23		4 OF 4	REVIT FILE NAME chst-35-i		PAPER DRAWING ID chst-35-i-4		ISSUE 4
DESIGNED	APPROVED	DATE	SCALE(S)	SHEET																			
SS	SA	25.05.23		4 OF 4																			
REVIT FILE NAME chst-35-i		PAPER DRAWING ID chst-35-i-4		ISSUE 4																			

 International Health Facility Guidelines

International Health Facility Guidelines at:  
[www.healthdesign.com.au/iHFG](http://www.healthdesign.com.au/iHFG)  
 Editable version of Standard Components on  
 Health Facility Briefing System (HFBS) at:  
[www.healthdesign.com.au](http://www.healthdesign.com.au) ©TAHPI



This document is for advisory purpose only