

iHFG Standard Components

Room Layout Sheet

Room Name | **Cleaner's Room, 6m²**

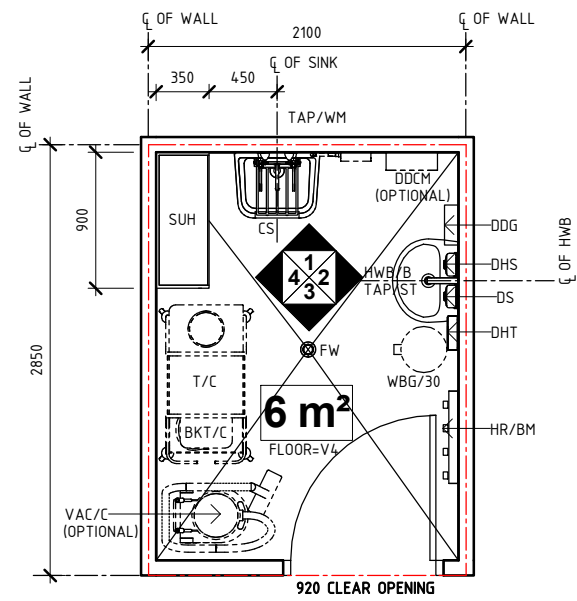
RLS Room Code

clrm-6-i

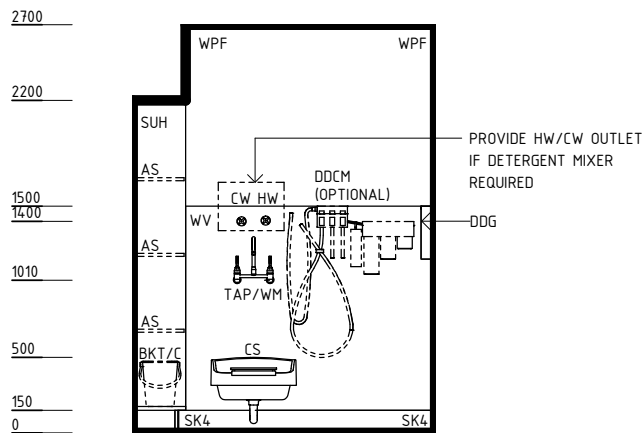
RDS Room Code

clrm-6-i

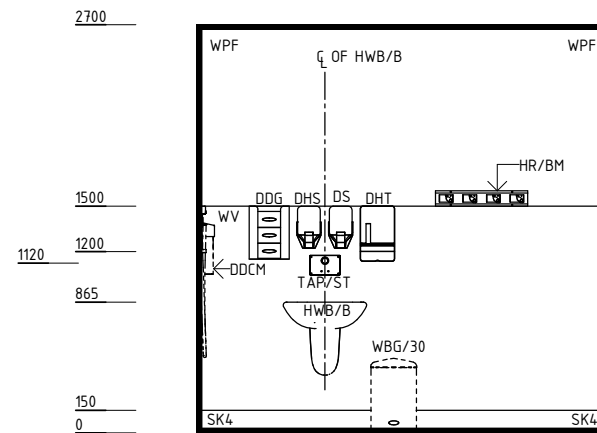
- AS ADJUSTABLE SHELF
- BH/PB BULKHEAD - PLASTERBOARD, PAINT FINISH
- BKT/C BUCKET - CLEANER'S
- CS CLEANER'S SINK
- CW COLD WATER OUTLET
- DDCM DISPENSER - DETERGENT/CHEMICAL MIXER
- DDG DISPENSER - DISPOSABLE GLOVES
- DFP DOOR AND DOOR FRAME PROTECTION
- DHS DISPENSER - HAND SANITISER
- DHT DISPENSER - PAPER HAND TOWEL
- DS DISPENSER - SOAP
- FW FLOOR WASTE
- HR/BM HOOK RACK - BROOM/ MOP
- HW HOT WATER OUTLET
- HWB/B HAND WASH BASIN - TYPE 'B'
- LS/R LIGHT SWITCH - ROOM
- PO/2 POWER OUTLET - DOUBLE
- SK4 FLOOR VINYL COVERED SKIRTING
- SUH SHELVE UNIT - HEAVY DUTY
- T/C TROLLEY - CLEANER'S
- TAP/ST TAPWARE - SENSOR TAP
- TAP/WM TAPWARE - WALL MOUNT
- V4 VINYL FLOORING, NON SLIP - SAFETY
- VAC/C VACUUM CLEANER - COMMERCIAL
- WBG/30 WASTE BIN - GENERAL, 30 LITRE
- WPF WALL PAINT FINISH
- WV WALL VINYL



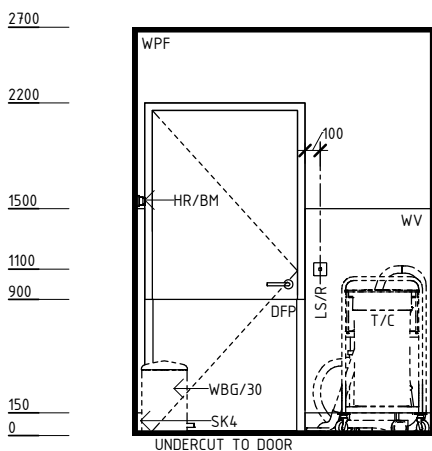
PLAN



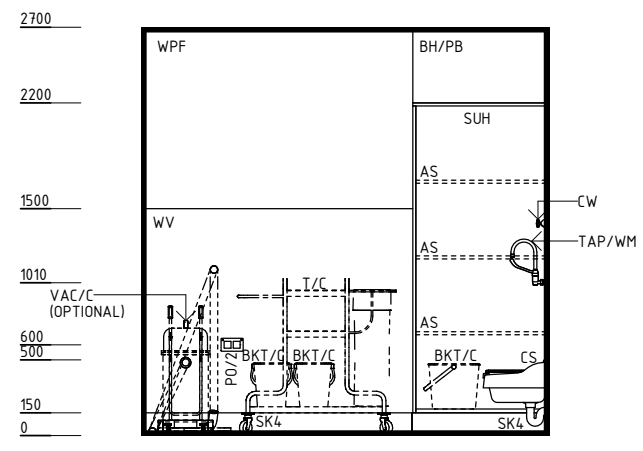
ELEVATION 1



ELEVATION 2



ELEVATION 3



ELEVATION 4

REV	DESCRIPTION	DATE	BY	REV	DESCRIPTION	DATE	BY	COMPATIBILITY
1	FIRST ISSUE	24.10.14	NB					
2	GENERAL REVISION	31.08.22	RA					

DESIGNED	APPROVED	DATE	SCALE(S)	SHEET
RA	RH	31.08.22	1 : 50	1 OF 2
REVIT FILE NAME		PAPER DRAWING ID		ISSUE
clrm-6-i		clrm-6-i-1		2

iHFG Standard Components

Room Layout Sheet

RLS Room Code

clrm-6-i

RDS Room Code

clrm-6-i

Room Name

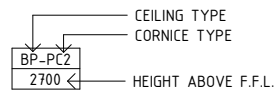
Cleaner's Room, 6m²

GENERAL NOTES:

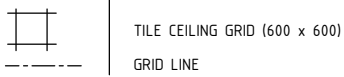
THIS DRAWING TO BE READ IN CONJUNCTION WITH R.D.S. (ROOM DATA SHEETS) WHICH TAKES PRECEDENCE.

ALL SERVICES INDICATED ARE INDICATIVE AND SUBJECT TO DETAILED PROJECT SPECIFIC ENGINEERING DESIGN.

CEILING LEGEND:



BH/PB PLASTERBOARD BULKHEAD, PAINT FINISH
WPT-PC4 WATER RESISTANT, DROP IN TILES WITH POWDERCOAT ALUMINIUM CORNICER, SHADOW LINE



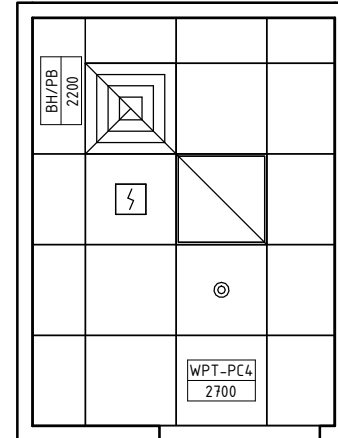
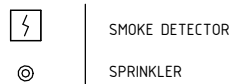
ELECTRICAL LEGEND:



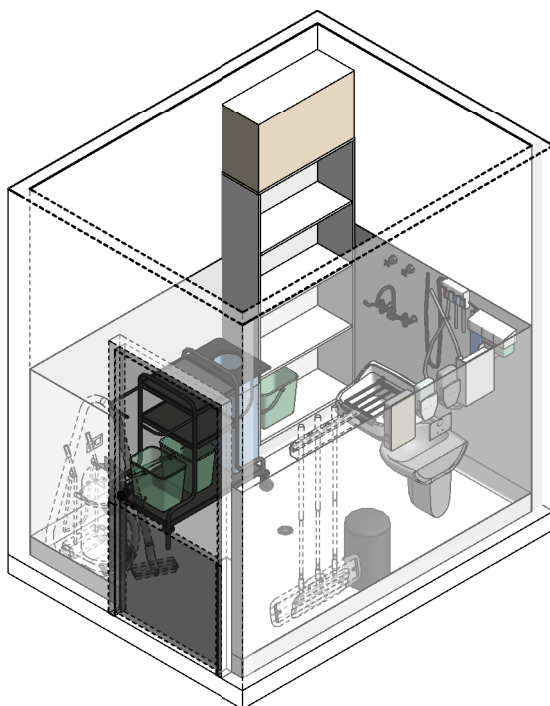
MECHANICAL LEGEND:



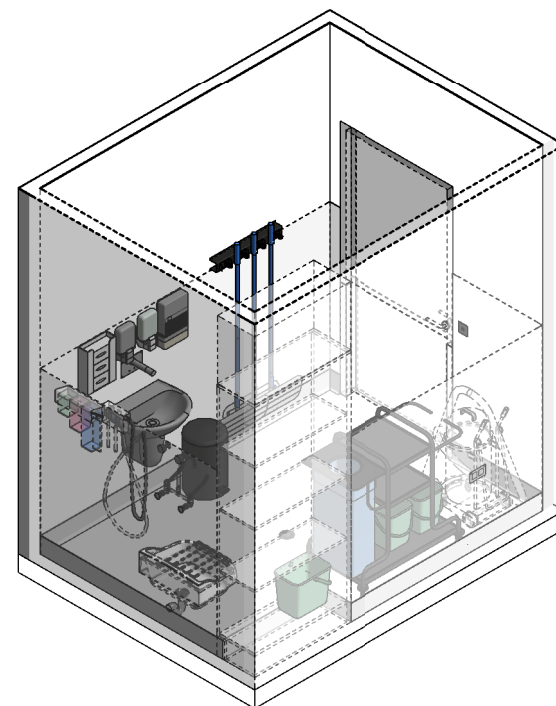
FIRE SERVICES LEGEND:



REFLECTED CEILING PLAN



ISOMETRIC VIEW 01



ISOMETRIC VIEW 02

REV	DESCRIPTION	DATE	BY	REV	DESCRIPTION	DATE	BY	COMPATIBILITY
1	FIRST ISSUE	24.10.14	NB					
2	GENERAL REVISION	31.08.22	RA					



International Health Facility Guidelines at:
www.healthdesign.com.au/iHFG
Editable version of Standard Components on
Health Facility Briefing System (HFBS) at:
www.healthdesign.com.au @TAHPI



DESIGNED	APPROVED	DATE	SCALE(S)	SHEET
RA	RH	31.08.22	1 : 50	2 OF 2
REVIT FILE NAME		PAPER DRAWING ID		ISSUE
clrm-6-i		clrm-6-i-2		2