

iHFG Standard Components

Room Layout Sheet

Room Name **Clean Utility/ Medication, 12m2**

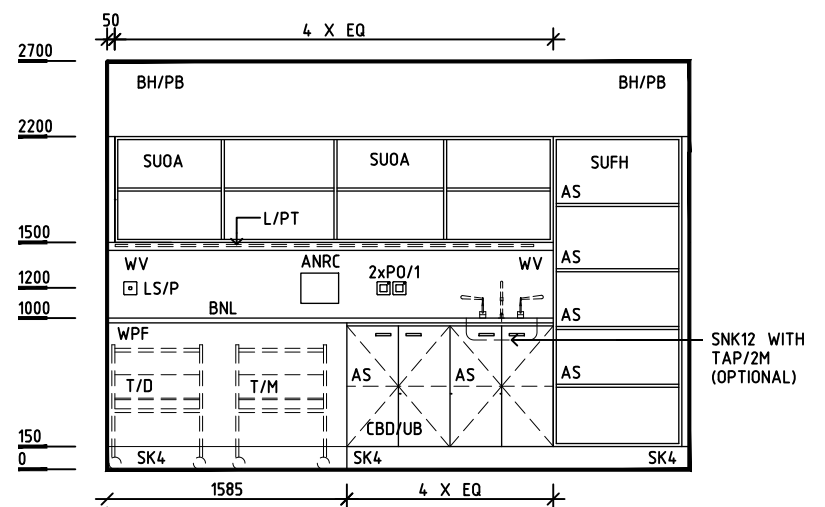
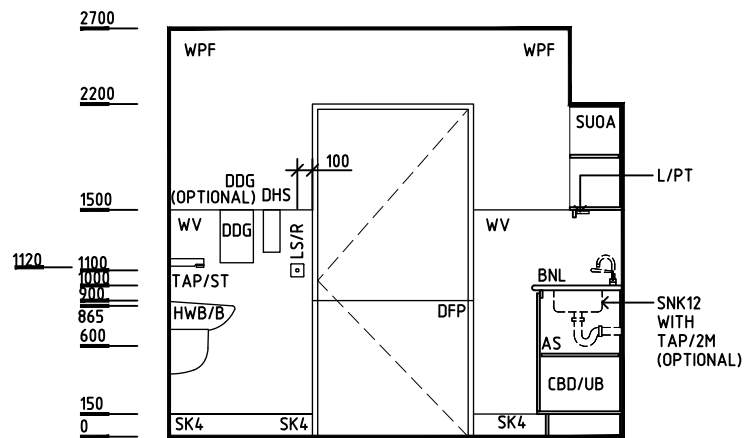
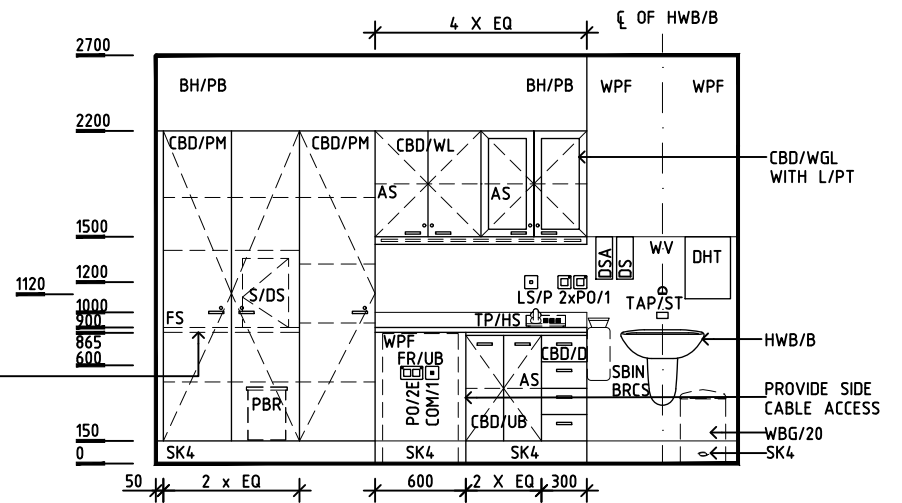
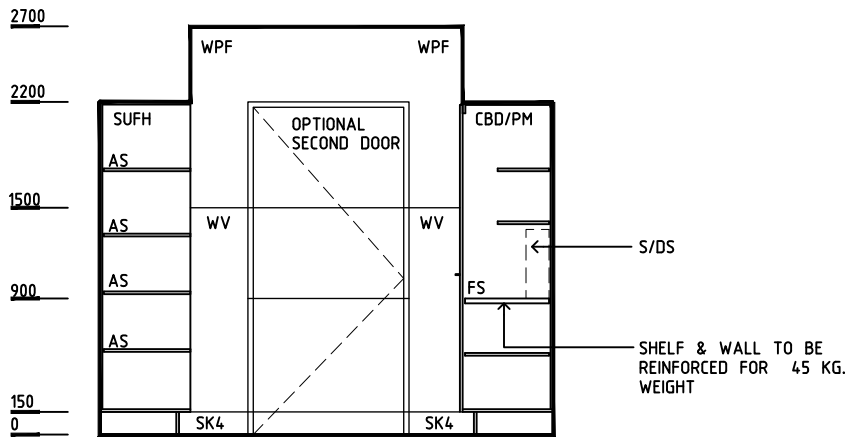
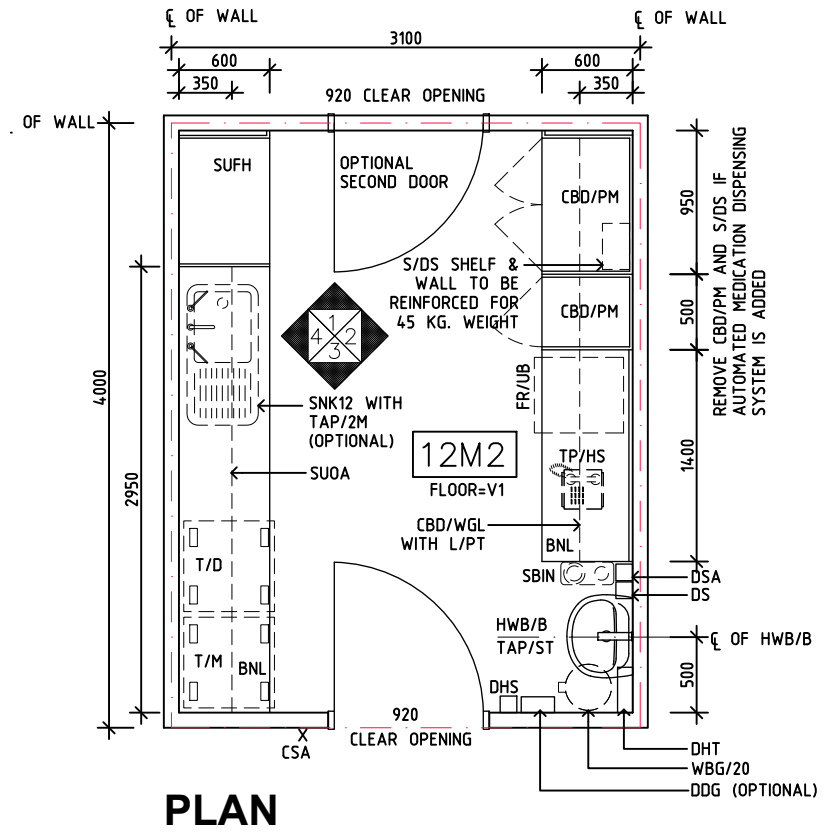
RLS Room Code

clum-12-i

RDS Room Code

clum-12-i

- ANRC ANNUNCIATOR - ROOM CONSOLE
- AS ADJUSTABLE SHELF
- BNL LAMINATED BENCH TOP
- BRCS BRACKETS - SHARPS
- CBD/D CUPBOARD - DRAWER UNIT
- CBD/PM CUPBOARD - PHARMACY MANAGEMENT SYSTEM, LOCKABLE
- CBD/UB CUPBOARD - UNDER BENCH
- CBD/WGL CUPBOARD - WALL MOUNTED, GLASS DOORS, LOCKABLE
- CBD/WL CUPBOARD - WALL MOUNTED, LOCKABLE
- COM/1 COMMUNICATION OUTLET - SINGLE
- COM/2 COMMUNICATION OUTLET - DOUBLE
- CSA CARD ACCESS
- DFP DOOR AND DOOR FRAME PROTECTION
- DDG DISPENSER - DISPOSABLE GLOVES
- DHT DISPENSER - HAND TOWEL
- DHS DISPENSER - HAND SANITISER
- DSA DISPENSER - SOAP ANTISEPTIC
- FR/UB FRIDGE - UNDER BENCH
- FS FIXED SHELF
- HWB/B HAND WASH BASIN - TYPE 'B'
- L/PT LIGHT - PELMET TASK LIGHT
- LS/R LIGHT SWITCH - ROOM
- LS/P LIGHT SWITCH - PELMET TASK LIGHT
- PBR PHARMACY BIN - RETURNS
- PO/1 POWER OUTLET - SINGLE
- PO/2E POWER OUTLET - EMERGENCY, DOUBLE
- S/DS SAFE - DANGEROUS DRUG, SMALL
- SBIN SHARPS BIN
- SK4 FLOOR VINYL COVERED SKIRTING
- SNK12 SINK WITH DRAINER - SINGLE
- SUFH SHELVING UNIT - ADJUSTABLE, FULL HEIGHT
- SUOA SHELVING UNIT - OVER BENCH, ADJUSTABLE
- T/D TROLLEY - DRESSING
- T/M TROLLEY - MEDICATION
- TAP/2M TAPWARE - DUAL MIXER
- TAP/ST TAPWARE - SENSOR TAP
- TP/HS TELEPHONE - HANDSET, STANDARD
- V1 VINYL FLOORING, STANDARD SLIP RESISTANT
- WBG/20 WASTE BIN- GENERAL, 20 LITRE
- WPF WALL PAINT FINISH
- WV WALL VINYL



REV	DESCRIPTION	DATE	BY	REV	DESCRIPTION	DATE	BY	COMPATIBILITY		
1	FIRST ISSUE	27.01.23	AM							
								iHFG		
iHFG International Health Facility Guidelines		International Health Facility Guidelines at: www.healthdesign.com.au/iHFG Editable version of Standard Components on Health Facility Briefing System (HFBS) at: www.healthdesign.com.au ©TAHPI				DESIGNED	APPROVED	DATE	SCALE(S)	SHEET
						AM	SA	27.01.23	1:50 in A3	1 OF 2
						CAD FILE NAME	PAPER DRAWING ID		ISSUE	
						clum-12-i	clum-12-i-1		1	

This document is for advisory purpose only

iHFG Standard Components

Room Layout Sheet

Room Name **Clean Utility/ Medication, 12m2**

RLS Room Code

clum-12-i

RDS Room Code

clum-12-i

GENERAL NOTES:

THIS DRAWING TO BE READ IN CONJUNCTION WITH R.D.S. (ROOM DATA SHEETS) WHICH TAKES PRECEDENCE.


ALL SERVICES INDICATED ARE INDICATIVE AND SUBJECTED TO DETAILED PROJECT SPECIFIC ENGINEERING DESIGN.

CEILING LEGEND:



- BH/PB BULKHEAD - PLASTERBOARD, PAINT FINISH
- PB PLASTERBOARD FLUSH SET CEILING, PAINT
- PC3 PLASTERBOARD SQUARE SET CORNICE

-  CEILING TYPE
-  HEIGHT ABOVE F.F.L.

ELECTRICAL LEGEND:

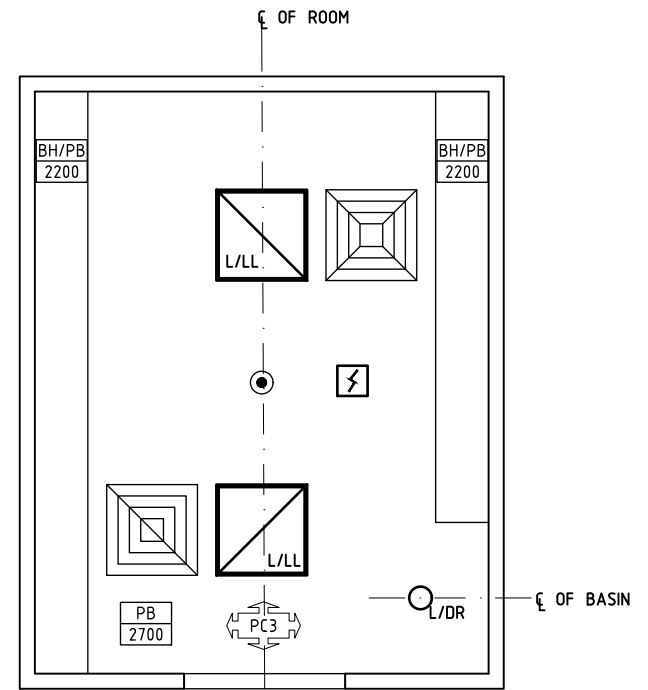
-  LIGHT - LED LIGHT

MECHANICAL LEGEND:


-  SUPPLY AIR GRILLE
-  RETURN AIR GRILLE

FIRE SERVICES LEGEND:

-  SMOKE DETECTOR
-  SPRINKLER



REFLECTED CEILING PLAN

REV	DESCRIPTION	DATE	BY	REV	DESCRIPTION	DATE	BY	COMPATIBILITY																				
1	FIRST ISSUE	27.01.23	AM																									
								<table border="1"> <thead> <tr> <th>DESIGNED</th> <th>APPROVED</th> <th>DATE</th> <th>SCALE(S)</th> <th>SHEET</th> </tr> </thead> <tbody> <tr> <td>AM</td> <td>SA</td> <td>27.01.23</td> <td>1:50 in A3</td> <td>2 OF 2</td> </tr> <tr> <td colspan="2">CAD FILE NAME</td> <td colspan="2">PAPER DRAWING ID</td> <td>ISSUE</td> </tr> <tr> <td colspan="2">clum-12-i</td> <td colspan="2">clum-12-i-2</td> <td>1</td> </tr> </tbody> </table>	DESIGNED	APPROVED	DATE	SCALE(S)	SHEET	AM	SA	27.01.23	1:50 in A3	2 OF 2	CAD FILE NAME		PAPER DRAWING ID		ISSUE	clum-12-i		clum-12-i-2		1
DESIGNED	APPROVED	DATE	SCALE(S)	SHEET																								
AM	SA	27.01.23	1:50 in A3	2 OF 2																								
CAD FILE NAME		PAPER DRAWING ID		ISSUE																								
clum-12-i		clum-12-i-2		1																								