

iHFG Standard Components

Room Layout Sheet

Room Name **Clean-up Room, 7m2**

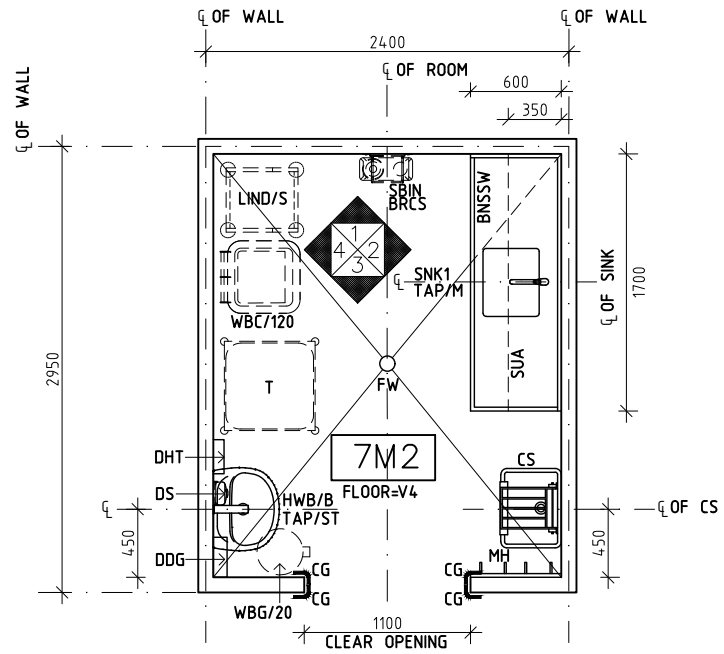
RLS Room Code

clup-7-i

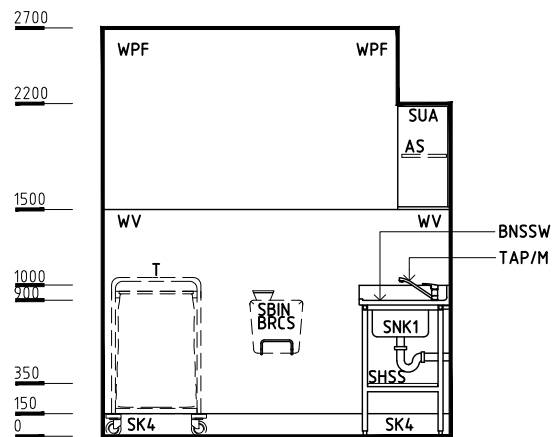
RDS Room Code

clup-7-i

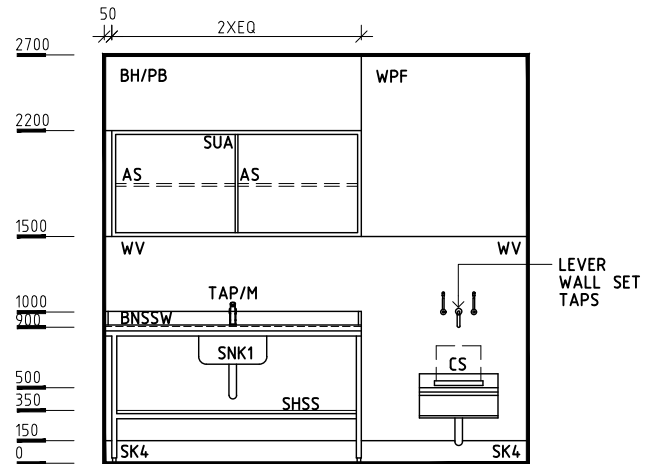
- AS ADJUSTABLE SHELF
- BRCs BRACKET - SHARPS
- BNSSW BENCH - STAINLESS STEEL, WET EDGE
- CG CORNER GUARD
- CS CLEANER'S SINK
- DDG DISPENSER - DISPOSABLE GLOVES
- DHT DISPENSER - HAND TOWEL
- DS DISPENSER - SOAP
- FW FLOOR WASTE
- HWB/B HAND WASH BASIN - TYPE 'B'
- LIND/S LINEN CARRIER - DIRTY, SINGLE
- LS/R LIGHT SWITCH - ROOM
- MH MOP HOOKS
- SBIN SHARPS BIN
- SK4 FLOOR VINYL COVERED SKIRTING
- SNK SINK, STAINLESS STEEL
- STR/B STERILISER - BENCHTOP
- SHSS SHELF - STAINLESS STEEL
- SUA SHELVE UNIT - ADJUSTABLE
- T TROLLEY
- TAP/EM TAPWARE - ELBOW MIXER
- TAP/ST TAPWARE - SENSOR
- T/I TROLLEY - INSTRUMENT
- V4 VINYL FLOORING, NON SLIP SAFETY
- WBC/120 WASTE BIN - CLINICAL, 120 LITRE
- WBG/20 WASTE BIN - GENERAL, 20 LITRE
- WPF WALL PAINT FINISH
- WV WALL VINYL



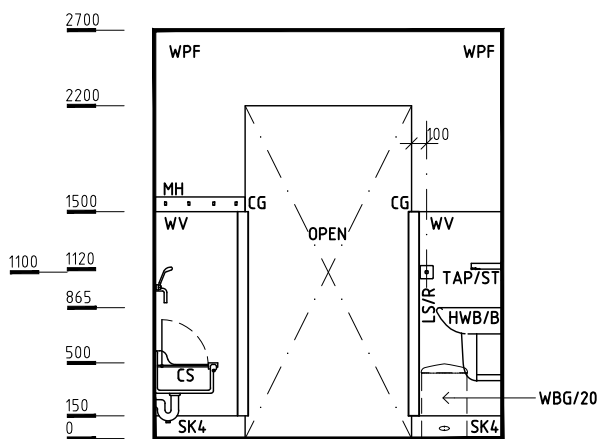
PLAN



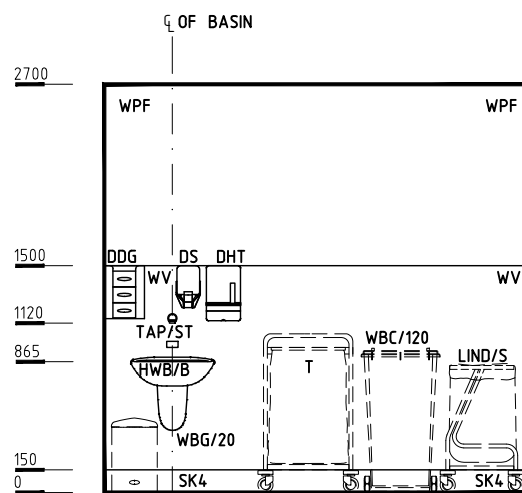
ELEVATION 1



ELEVATION 2



ELEVATION 3



ELEVATION 4

REV	DESCRIPTION	DATE	BY	REV	DESCRIPTION	DATE	BY	COMPATIBILITY
1	FIRST ISSUE	24.10.10	CC	4	GENERAL REVISION	31.08.22	RA	
2	GENERAL REVISION	30.08.11	ASD					
3	GENERAL REVISION	31.10.12	KC					



International Health Facility Guidelines at:
www.healthdesign.com.au/iHFG
 Editable version of Standard Components on
 Health Facility Briefing System (HFBS) at:
www.healthdesign.com.au/TAHPI



DESIGNED	APPROVED	DATE	SCALE(S)	SHEET
RA	RH	31.08.22	1:50 in A3	1 OF 2
CAD FILE NAME		PAPER DRAWING ID		ISSUE
clup-7-i		clup-7-i-1		4

This document is for advisory purpose only

iHFG Standard Components

Room Layout Sheet

Room Name **Clean-up Room, 7m2**

RLS Room Code

clup-7-i

RDS Room Code

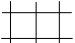
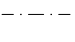
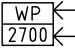
clup-7-i

GENERAL NOTES:

THIS DRAWING TO BE READ IN CONJUNCTION WITH R.D.S. (ROOM DATA SHEETS) WHICH TAKES PRECEDENCE.

ALL SERVICES INDICATED ARE INDICATIVE AND SUBJECT TO DETAILED PROJECT SPECIFIC ENGINEERING DESIGN.



CEILING LEGEND:

- PBB | PLASTERBOARD BULKHEAD (PAINT)
- PC4 | 24mm. SHADOW ANGLE, POWDERCOAT ALUMINIUM CORNICE
- WPT | WATER RESISTANT PLASTERBOARD DROP-IN CEILING TILES (PRE-FINISHED)
-  | TILE CEILING GRID (600 x 600)
-  | GRID LINE
-  | CEILING TYPE
HEIGHT ABOVE F.F.L.



ELECTRICAL LEGEND:

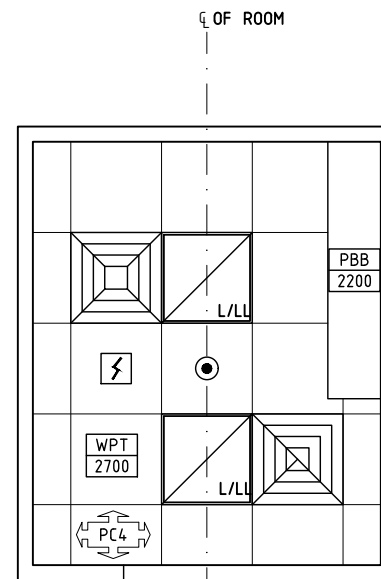
-  | LIGHT - LED LIGHT

MECHANICAL LEGEND:

-  | SUPPLY AIR GRILLE
-  | EXHAUST GRILLE



FIRE SERVICES LEGEND:

-  | SMOKE DETECTOR
-  | SPRINKLER



REFLECTED CEILING PLAN

REV	DESCRIPTION	DATE	BY	REV	DESCRIPTION	DATE	BY	COMPATIBILITY
1	FIRST ISSUE	24.10.10	CC	4	GENERAL REVISION	31.08.22	RA	
2	SECOND ISSUE	30.08.11	ASD					
3	GENERAL REVISION	31.10.12	KC					

	International Health Facility Guidelines		International Health Facility Guidelines at: www.healthdesign.com.au/iHFG Editable version of Standard Components on Health Facility Briefing System (HFBS) at: www.healthdesign.com.au ©TAHPI			DESIGNED	APPROVED	DATE	SCALE(S)	SHEET
	RA	CC	31.08.22	1:50 in A3		2 OF 2				
	CAD FILE NAME		PAPER DRAWING ID			ISSUE				
clup-7-i		clup-7-i-2		4						