

iHFG Standard Components

Room Layout Sheet

RLS Room Code

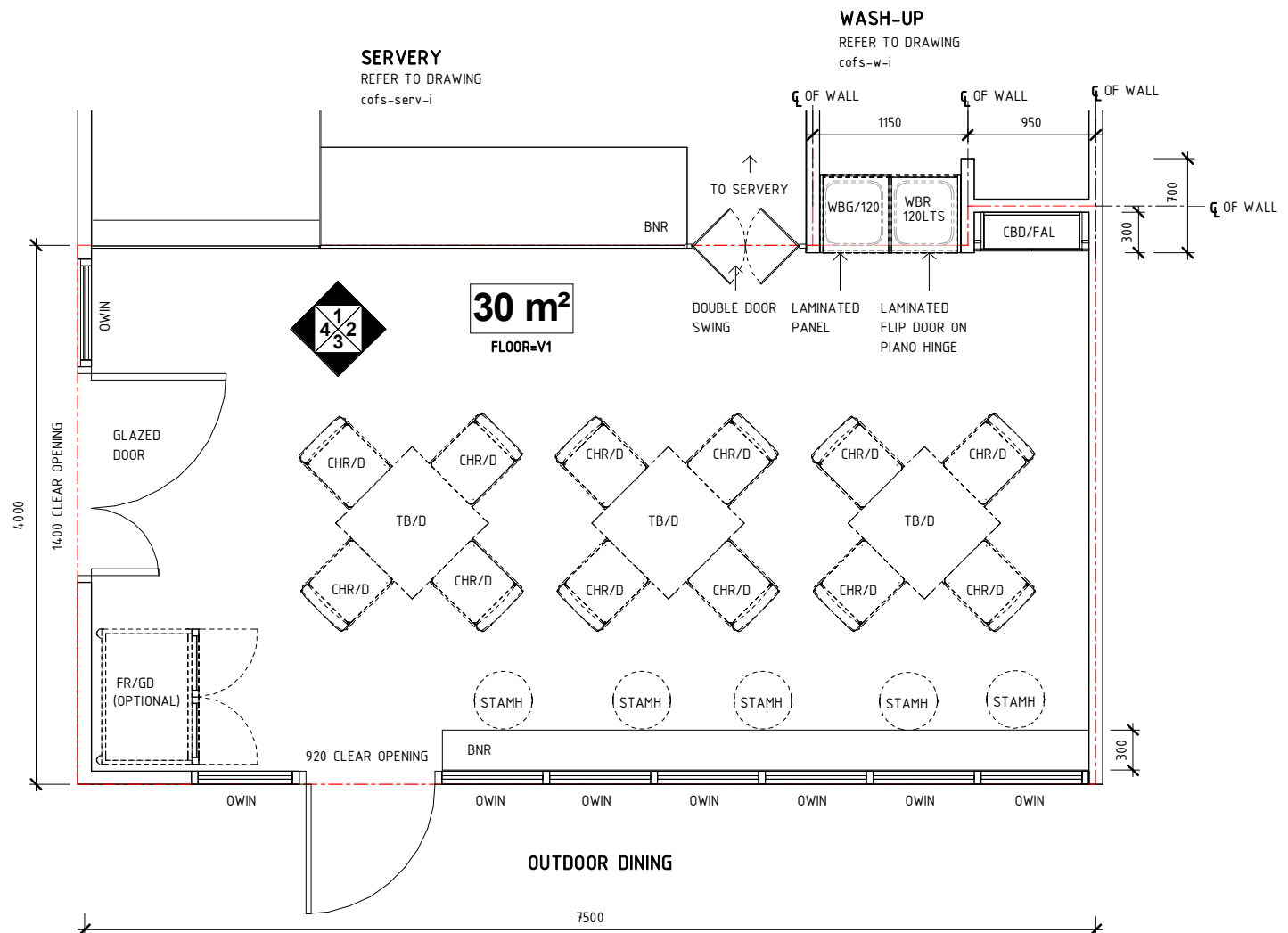
cofs-d-30-i

RDS Room Code

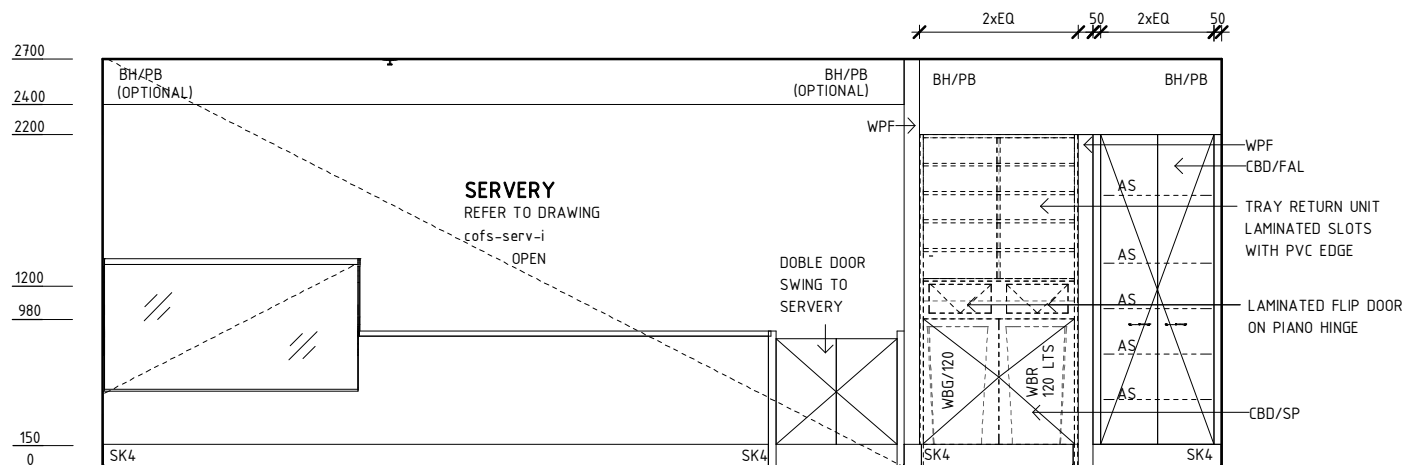
cofs-d-30-i

Room Name **Coffee Shop - Seating/ Dining, 30m²**

AS	ADJUSTABLE SHELF
BH/PB	BULKHEAD - PLASTERBOARD, PAINT FINISH
BNR	BENCH - RESINATE
CBD/FAL	CUPBOARD - FULL HEIGHT, ADJUSTABLE SHELVES, LOCKABLE
CBD/SP	CUPBOARD - SPECIAL
CHR/D	CHAIR - DINING
FR/GD	FRIDGE - GLASS DOOR
OWIN	OBSERVATION WINDOW
SK4	FLOOR VINYL COVED SKIRTING
STAMH	STOOL - ADJUSTABLE, MOBILE, HIGH
TB/D	TABLE - DINING
V1	VINYL FLOORING, STANDARD SLIP RESISTANT
WBG/120	WASTE BIN - GENERAL, 120 LITRE
WBR	WASTE BIN - RECYCLING
WPF	WALL PAINT FINISH



PLAN



ELEVATION 1

REV	DESCRIPTION	DATE	BY	REV	DESCRIPTION	DATE	BY	COMPATIBILITY
1	FIRST ISSUE	24.10.10	CC	4	GENERAL REVISION	25.05.23	SS	iHFG
2	GENERAL REVISION	30.08.11	ASD					
3	GENERAL REVISION	31.10.12	KC					



International Health Facility Guidelines at:
www.healthdesign.com.au/iHFG
 Editable version of Standard Components on
 Health Facility Briefing System (HFBS) at:
www.healthdesign.com.au@TAHPI



DESIGNED	APPROVED	DATE	SCALE(S)	SHEET
SS	SA	25.05.23	1 : 50	1 OF 4
REVIT FILE NAME		PAPER DRAWING ID		ISSUE
cofs-d-30-i		cofs-d-30-i-1		4

This document is for advisory purpose only

iHFG Standard Components

Room Layout Sheet

RLS Room Code

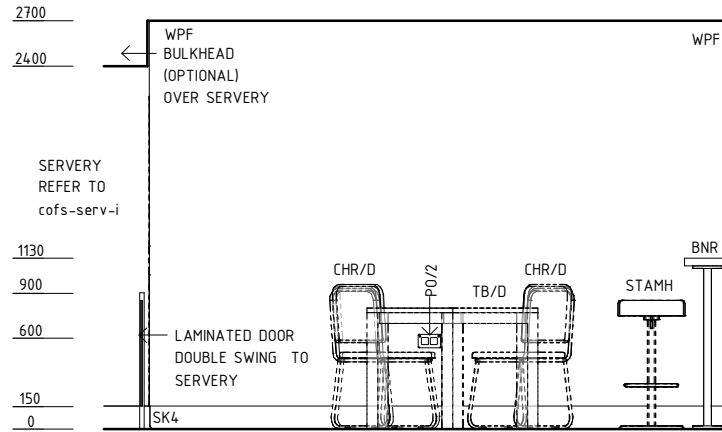
cofs-d-30-i

RDS Room Code

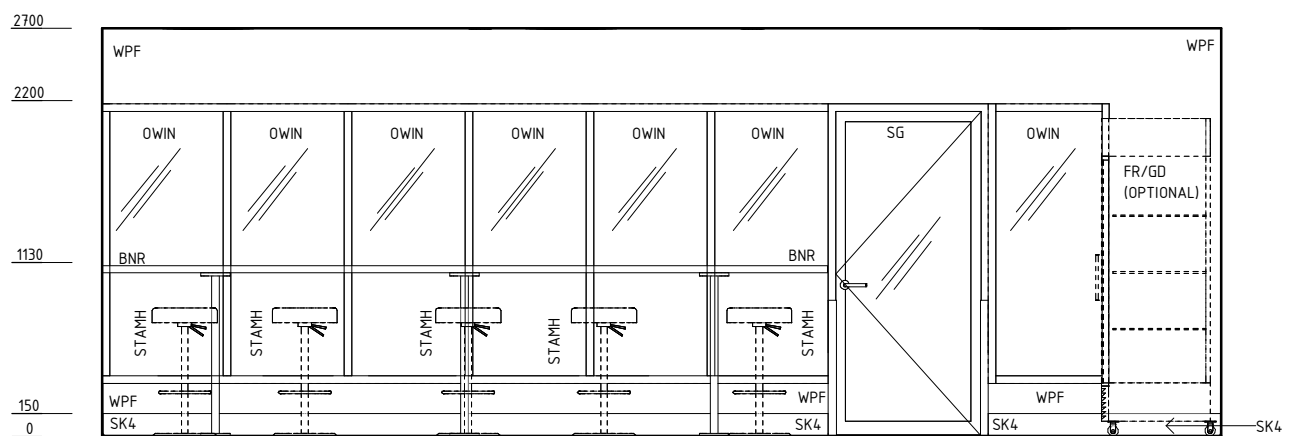
cofs-d-30-i

Room Name | Coffee Shop - Seating/ Dining, 30m2

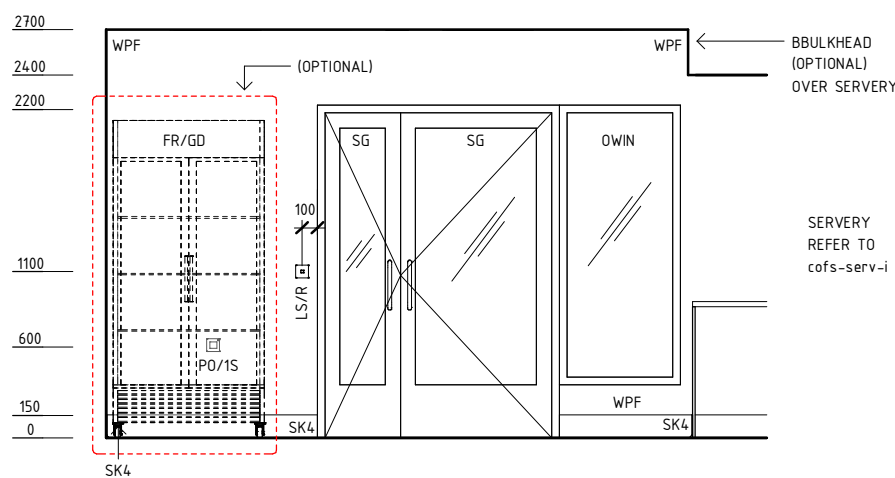
BNR	BENCH - RESINATE
CHR/D	CHAIR - DINING
FR/GD	FRIDGE - GLASS DOOR
LS/R	LIGHT SWITCH - ROOM
OWIN	OBSERVATION WINDOW
PO/1S	POWER OUTLET - SPECIAL
PO/2	POWER OUTLET - DOUBLE
SG	SAFETY GLASS
SK4	FLOOR VINYL COVERED SKIRTING
STAMH	STOOL - ADJUSTABLE, MOBILE, HIGH
TB/D	TABLE - DINING
WPF	WALL PAINT FINISH



ELEVATION 2



ELEVATION 3



ELEVATION 4

REV	DESCRIPTION	DATE	BY	REV	DESCRIPTION	DATE	BY	COMPATIBILITY
1	FIRST ISSUE	24.10.10	CC	4	GENERAL REVISION	25.05.23	SS	iHFG
2	GENERAL REVISION	30.08.11	ASD					
3	GENERAL REVISION	31.10.12	KC					



International Health Facility Guidelines at:
www.healthdesign.com.au/iHFG
 Editable version of Standard Components on
 Health Facility Briefing System (HFBS) at:
www.healthdesign.com.au@TAHPI



DESIGNED	APPROVED	DATE	SCALE(S)	SHEET
SS	SA	25.05.23	1 : 50	2 OF 4
REVIT FILE NAME		PAPER DRAWING ID		ISSUE
cofs-d-30-i		cofs-d-30-i-2		4

iHFG Standard Components

Room Layout Sheet

Room Name **Coffee Shop - Seating/ Dining, 30m²**

RLS Room Code

cofs-d-30-i

RDS Room Code

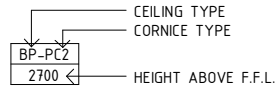
cofs-d-30-i

GENERAL NOTES:

THIS DRAWING TO BE READ IN CONJUNCTION WITH R.D.S. (ROOM DATA SHEETS) WHICH TAKES PRECEDENCE.

ALL SERVICES INDICATED ARE INDICATIVE AND SUBJECTED TO DETAILED PROJECT SPECIFIC ENGINEERING DESIGN.

CEILING LEGEND:



- ACT-PCS ACOUSTIC CEILING TILES WITH POWDERCOAT ALUMINIUM CORNICE, FLUSHED AGAINST WALL
- BH/PB PLASTERBOARD BULKHEAD, PAINT FINISH
- TILE CEILING GRID (600 x 600)

ELECTRICAL LEGEND:

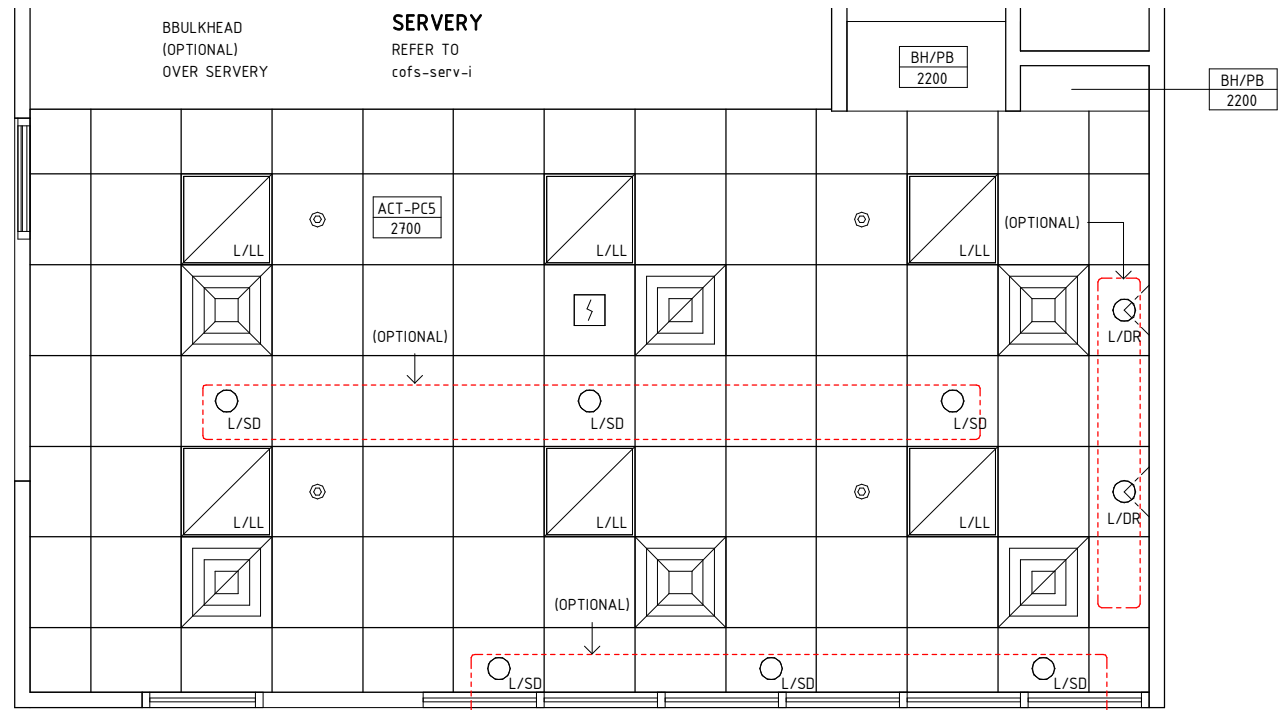
- L/SD LIGHT - SPECIAL, DECORATIVE (OPTIONAL)
- L/DR LIGHT - DOWNLIGHT, RECESSED (OPTIONAL)
- L/LL LIGHT - LED LIGHT

MECHANICAL LEGEND:

- SUPPLY AIR GRILLE
- RETURN AIR GRILLE

FIRE SERVICES LEGEND:

- SMOKE DETECTOR
- SPRINKLER



REFLECTED CEILING PLAN

REV	DESCRIPTION	DATE	BY	REV	DESCRIPTION	DATE	BY	COMPATIBILITY
1	FIRST ISSUE	24.10.10	CC	4	GENERAL REVISION	25.05.23	SS	
2	GENERAL REVISION	30.08.11	ASD					iHFG
3	GENERAL REVISION	31.10.12	KC					

DESIGNED	APPROVED	DATE	SCALE(S)	SHEET
SS	SA	25.05.23	1 : 50	3 OF 4

REVIT FILE NAME	PAPER DRAWING ID	ISSUE
cofs-d-30-i	cofs-d-30-i-3	4

International Health Facility Guidelines at:
www.healthdesign.com.au/iHFG
Editable version of Standard Components on
Health Facility Briefing System (HFBS) at:
www.healthdesign.com.au ©TAHPI

ISO 9001 QUALITY MANAGEMENT SYSTEM

iHFG Standard Components

Room Layout Sheet

RLS Room Code

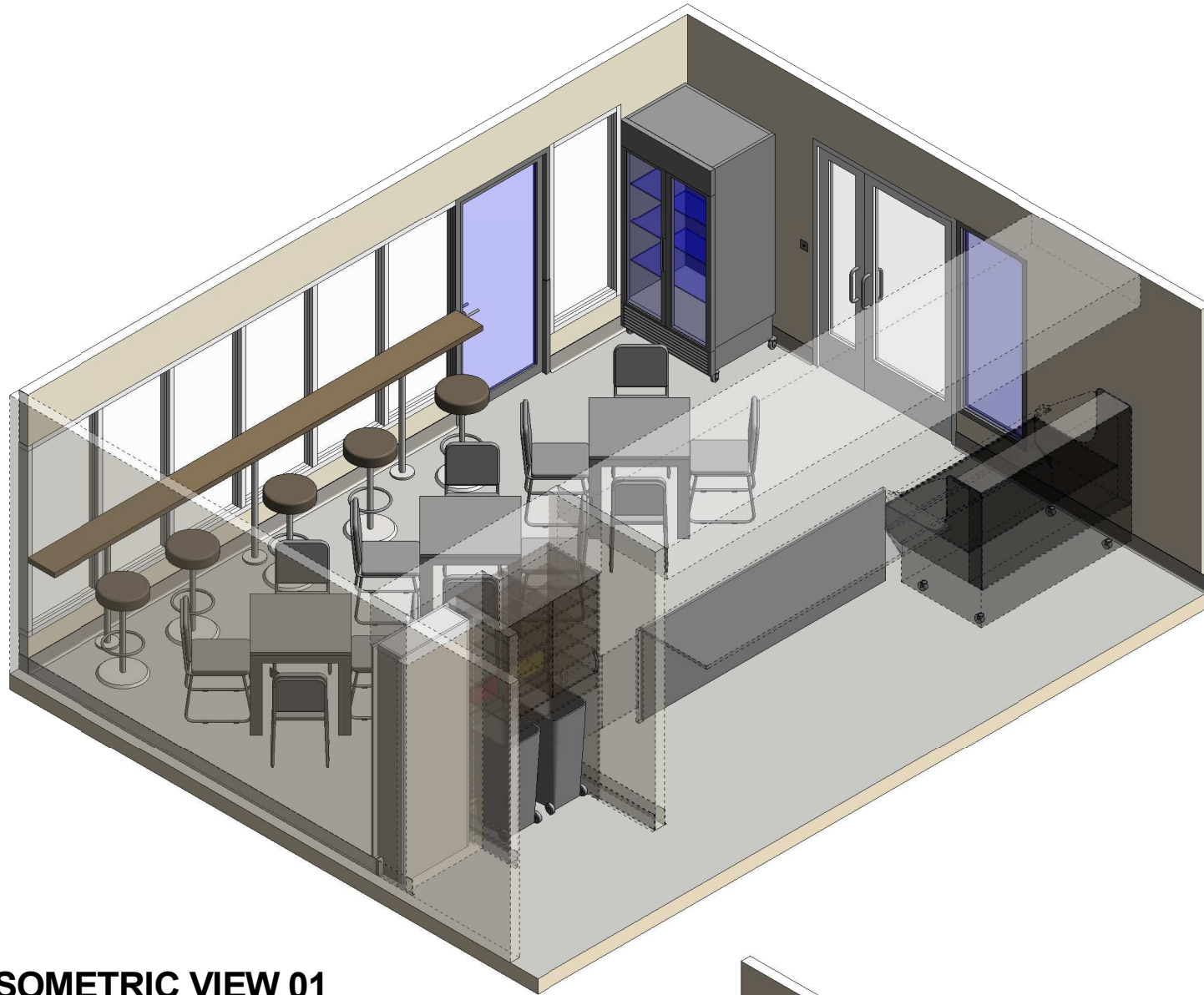
cofs-d-30-i

RDS Room Code

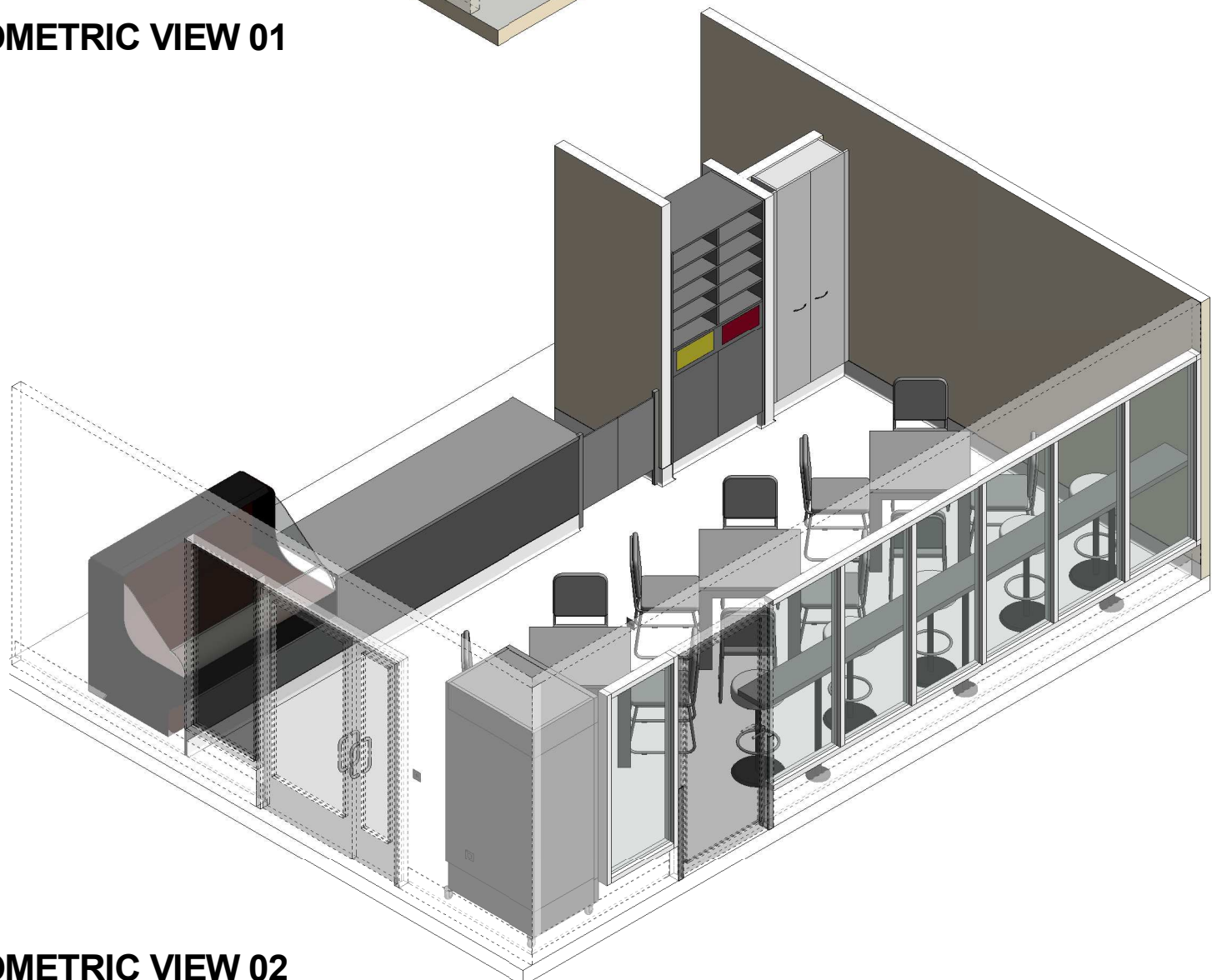
cofs-d-30-i

Room Name

Coffee Shop - Seating/ Dining, 30m2



ISOMETRIC VIEW 01



ISOMETRIC VIEW 02

REV	DESCRIPTION	DATE	BY	REV	DESCRIPTION	DATE	BY	COMPATIBILITY				
1	FIRST ISSUE	24.10.10	CC	4	GENERAL REVISION	25.05.23	SS	iHFG				
2	GENERAL REVISION	30.08.11	ASD									
3	GENERAL REVISION	31.10.12	KC									
								DESIGNED	APPROVED	DATE	SCALE(S)	SHEET
								SS	SA	25.05.23		4 OF 4
								REVIT FILE NAME		PAPER DRAWING ID		ISSUE
								cofs-d-30-i		cofs-d-30-i-4		4

iHFG International Health Facility Guidelines

International Health Facility Guidelines at:
www.healthdesign.com.au/iHFG
 Editable version of Standard Components on
 Health Facility Briefing System (HFBS) at:
www.healthdesign.com.au @TAHPI



DESIGNED: SS
 APPROVED: SA
 DATE: 25.05.23
 SCALE(S):
 SHEET: 4 OF 4
 REVIT FILE NAME: cofs-d-30-i
 PAPER DRAWING ID: cofs-d-30-i-4
 ISSUE: 4

This document is for advisory purpose only