

iHFG Standard Components

Room Layout Sheet

Room Name **Consult Room - ENT/ Ophthalmology**

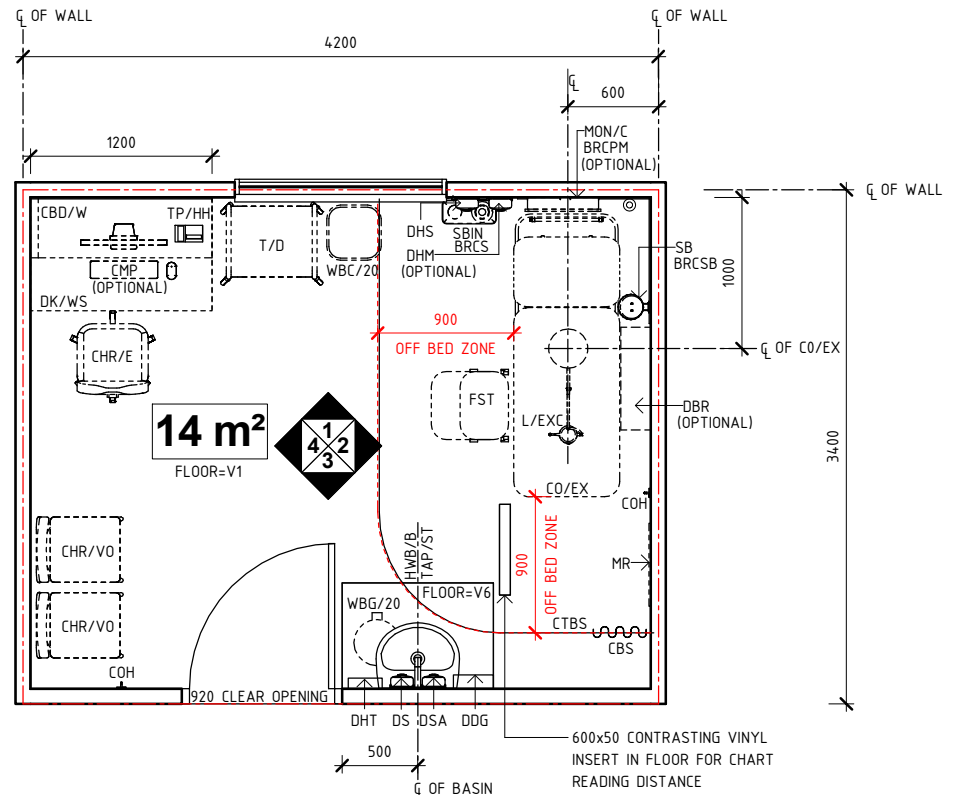
RLS Room Code

cons-ent-opt-i

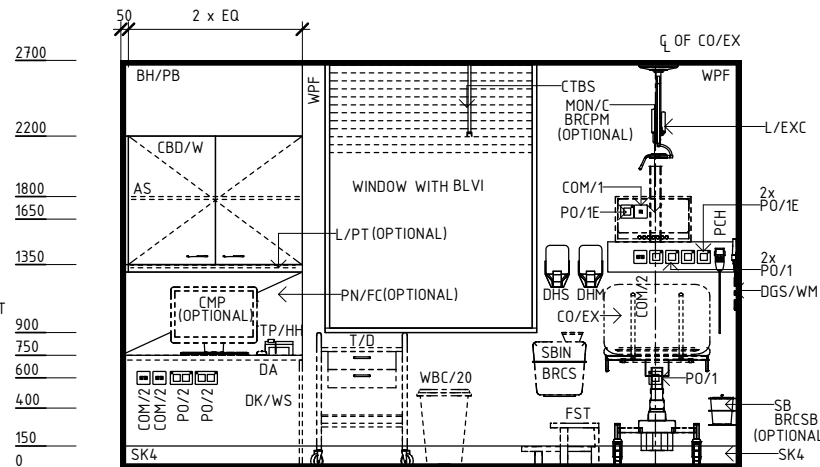
RDS Room Code

cons-ent-opt-i

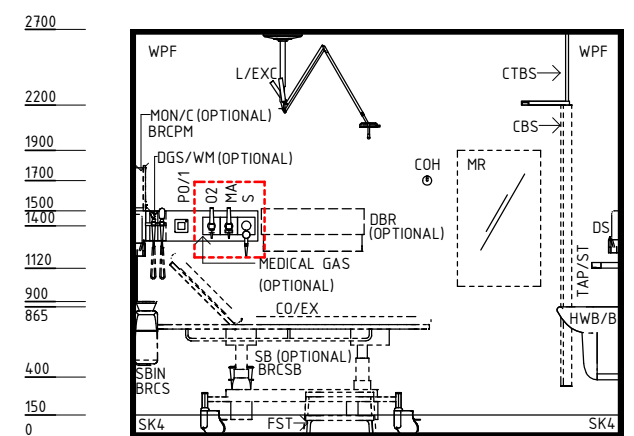
- AS ADJUSTABLE SHELF
- BH/PB BULKHEAD - PLASTERBOARD, PAINT FINISH
- BLVI BLIND - VENETIAN, INTEGRAL
- BRCPM BRACKET - PATIENT MONITOR
- BRCS BRACKET - SHARPS
- BRCSB BRACKET - SUCTION BOTTLE
- CBD/W CUPBOARD - WALL MOUNTED
- CBS CURTAIN - BED SCREEN
- CHR/E CHAIR - ERGONOMIC, OFFICE
- CHR/VO CHAIR - VISITOR, OFFICE
- CMP COMPUTER
- CO/EX COUCH - EXAMINATION, ELECTRIC
- COH COAT HOOK
- COM/1 COMMUNICATION OUTLET - SINGLE
- COM/2 COMMUNICATION OUTLET - DOUBLE
- CTBS CURTAIN TRACK - BED SCREEN
- DA DURESS ALARM
- DBR DISPENSER - BED ROLL
- DDG DISPENSER - DISPOSABLE GLOVES
- DFP DOOR AND DOOR FRAME PROTECTION
- DGS/WM DIAGNOSTIC SET - WALL MOUNTED
- DHM DISPENSER - HAND MOISTURISER
- DHS DISPENSER - HAND SANITISER
- DHT DISPENSER - PAPER HAND TOWEL
- DK/WS DESK - WORKSTATION
- DS DISPENSER - SOAP
- DSA DISPENSER - SOAP, ANTISEPTIC
- EC EMERGENCY CALL
- FST FOOTSTOOL
- HWB/B HAND WASH BASIN - TYPE 'B'
- L/EXC LIGHT - EXAMINATION, CEILING MOUNTED
- L/PT LIGHT - PELMET TASK LIGHT
- LS/P LIGHT SWITCH - PELMET TASK LIGHT
- LS/R LIGHT SWITCH - ROOM
- MA MEDICAL AIR
- MON/C MONITOR - CARDIAC
- MR MIRROR
- O2 OXYGEN
- OP OBSERVATION PANEL
- PC PATIENT CALL
- PCH PATIENT CALL HANDSET
- PN/FC PINBOARD - FABRIC COVERED
- PO/1 POWER OUTLET - SINGLE
- PO/1E POWER OUTLET - EMERGENCY, SINGLE
- PO/2 POWER OUTLET - DOUBLE
- S SUCTION
- SAC STAFF ASSIST CALL
- SB SUCTION BOTTLE
- SBIN SHARPS BIN
- SBK SPLASHBACK
- SK4 FLOOR VINYL COVERED SKIRTING
- T/D TROLLEY - DRESSING
- TAP/ST TAPWARE - SENSOR TAP
- TP/HH TELEPHONE - HANDSET, HANDSFREE
- V1 VINYL FLOORING, STANDARD SLIP RESISTANT
- V6 VINYL FLOORING, NON SLIP - TEXTURED
- WBC/20 WASTE BIN - CLINICAL, 20 LITRE
- WBG/20 WASTE BIN - GENERAL, 20 LITRE
- WPF WALL PAINT FINISH



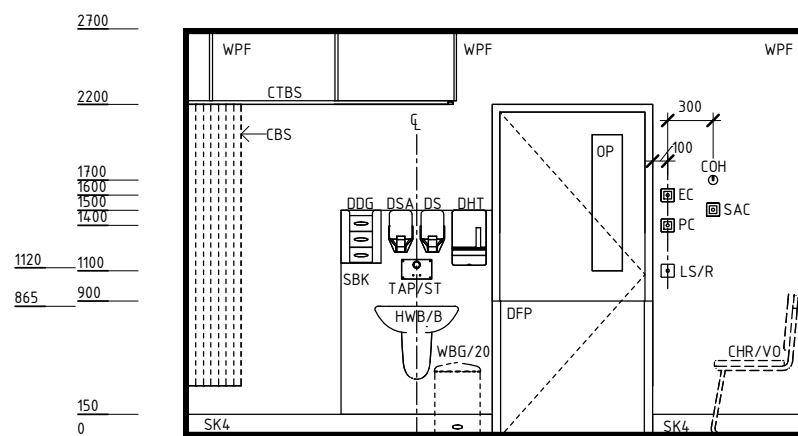
PLAN



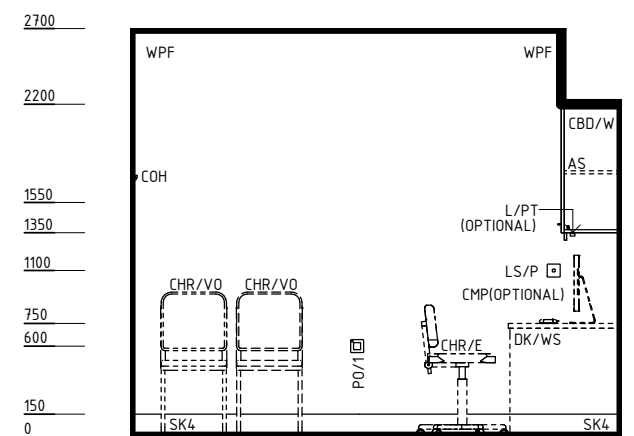
ELEVATION 1



ELEVATION 2



ELEVATION 3



ELEVATION 4

REV	DESCRIPTION	DATE	BY	REV	DESCRIPTION	DATE	BY	COMPATIBILITY
1	FIRST ISSUE	24.10.14	NB					
2	GENERAL REVISION	31.08.22	RA					



International Health Facility Guidelines at:
www.healthdesign.com.au/iHFG
 Editable version of Standard Components on
 Health Facility Briefing System (HFBS) at:
www.healthdesign.com.au/TAHPI



DESIGNED	APPROVED	DATE	SCALE(S)	SHEET
RA	CC	26.10.22	1 : 50	1 OF 3
REVIT FILE NAME		PAPER DRAWING ID		ISSUE
cons-ent-opt-i		cons-ent-opt-i-1		2

iHFG Standard Components

Room Layout Sheet

RLS Room Code

cons-ent-opt-i

RDS Room Code

cons-ent-opt-i

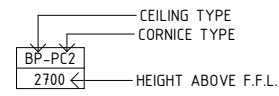
Room Name **Consult Room - ENT/ Ophthalmology**

GENERAL NOTES:

THIS DRAWING TO BE READ IN CONJUNCTION WITH R.D.S. (ROOM DATA SHEETS) WHICH TAKES PRECEDENCE.

ALL SERVICES INDICATED ARE INDICATIVE AND SUBJECTED TO DETAILED PROJECT SPECIFIC ENGINEERING DESIGN.

CEILING LEGEND:



ACT-PC4 ACOUSTIC CEILING TILES WITH POWDERCOAT ALUMINIUM CORNICE, SHADOW LINE
BH/PB PLASTERBOARD BULKHEAD, PAINT FINISH

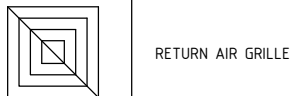
TILE CEILING GRID (600 x 600)

GRID LINE

ELECTRICAL LEGEND:

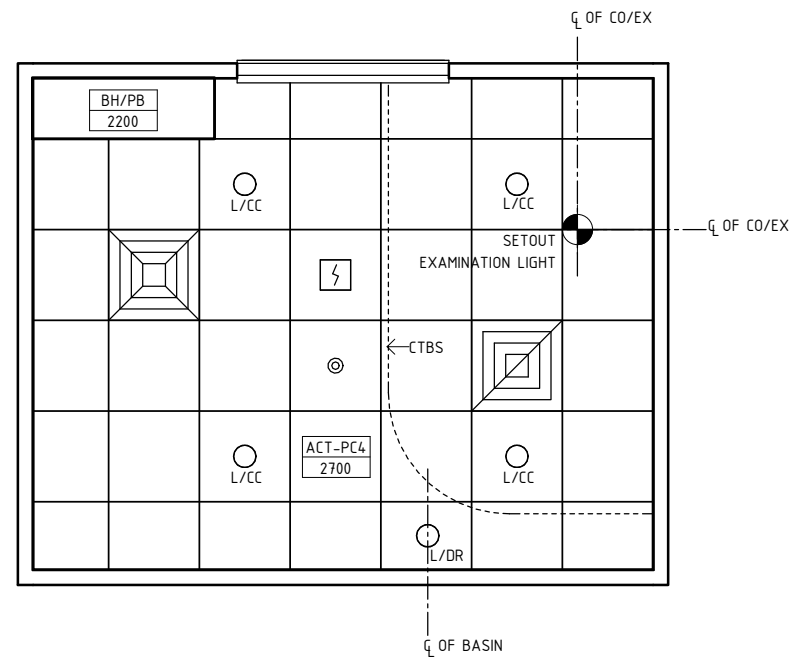
- L/CC LIGHT - COLOUR CORRECTED
- L/DR LIGHT - DOWNLIGHT, RECESSED

MECHANICAL LEGEND:



FIRE SERVICES LEGEND:

- ⚡ SMOKE DETECTOR
- ⊙ SPRINKLER



REFLECTED CEILING PLAN

REV	DESCRIPTION	DATE	BY	REV	DESCRIPTION	DATE	BY	COMPATIBILITY				
1	FIRST ISSUE	24.10.14	NB					iHFG				
2	GENERAL REVISION	31.08.22	RA									
								DESIGNED	APPROVED	DATE	SCALE(S)	SHEET
								RA	CC	31.08.22	1 : 50	2 OF 3
								REVIT FILE NAME		PAPER DRAWING ID		ISSUE
								cons-ent-opt-i		cons-ent-opt-i-2		2

iHFG Standard Components

Room Layout Sheet

RLS Room Code

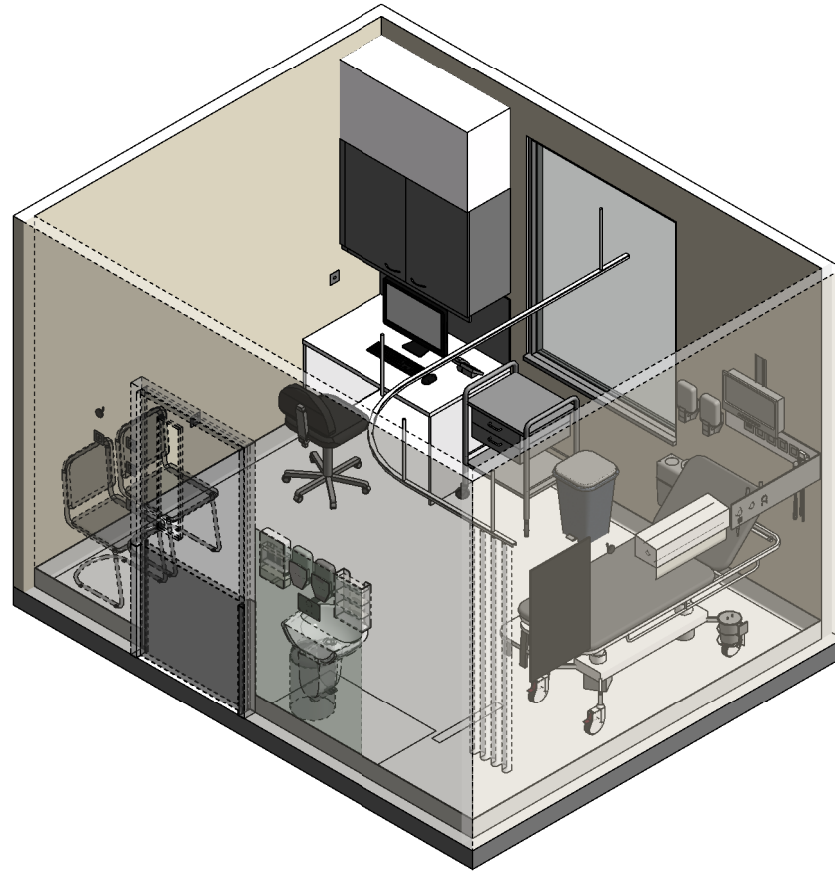
cons-ent-opt-i

RDS Room Code

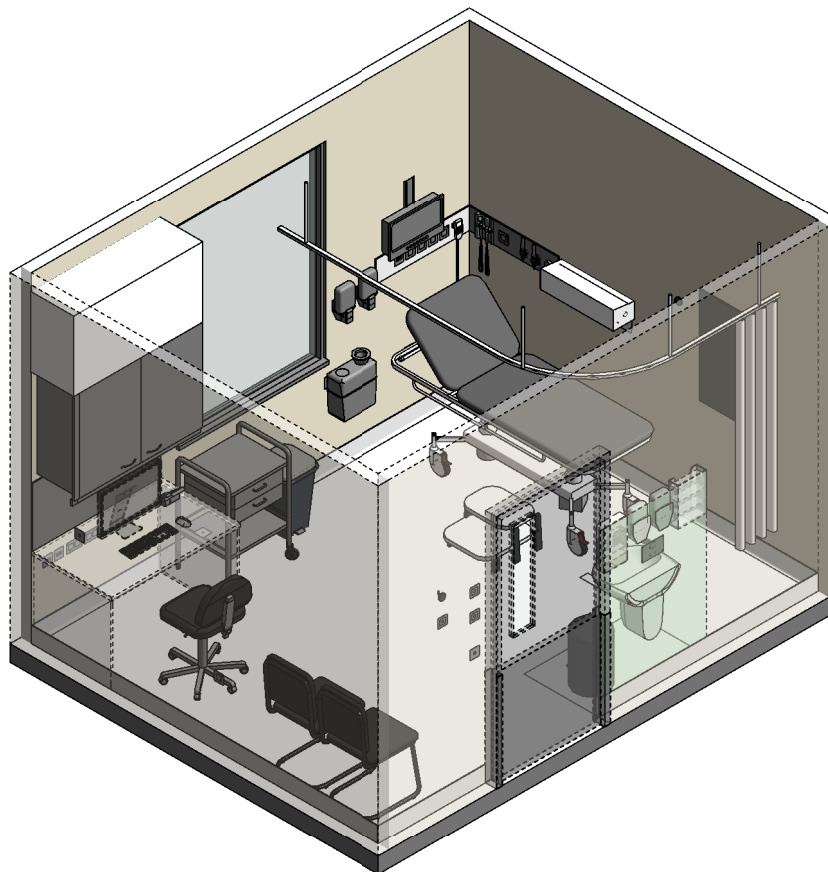
cons-ent-opt-i

Room Name

Consult Room - ENT/ Ophthalmology



ISOMETRIC VIEW 01



ISOMETRIC VIEW 02

REV	DESCRIPTION	DATE	BY	REV	DESCRIPTION	DATE	BY	COMPATIBILITY
1	FIRST ISSUE	24.10.14	NB					iHFG
2	GENERAL REVISION	31.08.22	RA					

DESIGNED	APPROVED	DATE	SCALE(S)	SHEET
RA	CC	31.08.22		3 OF 3
REVIT FILE NAME		PAPER DRAWING ID		ISSUE
cons-ent-opt-i		cons-ent-opt-i-3		2