

# iHFG Standard Components

## Room Layout Sheet

RLS Room Code

cons-i

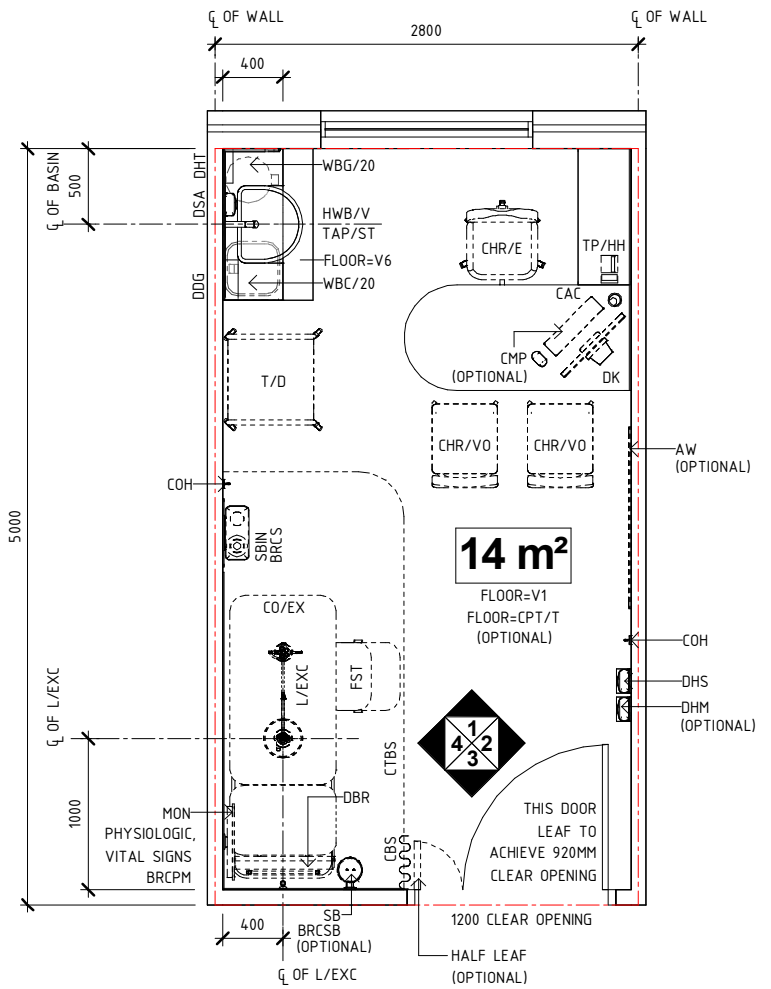
Room Name

Consult/ Exam Room - Alternate Option

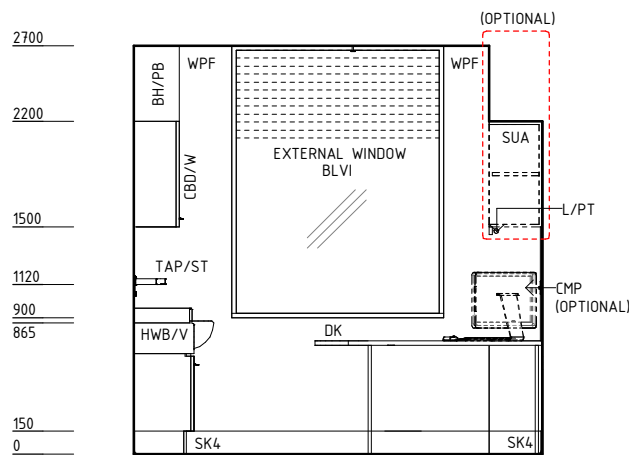
RDS Room Code

cons-i

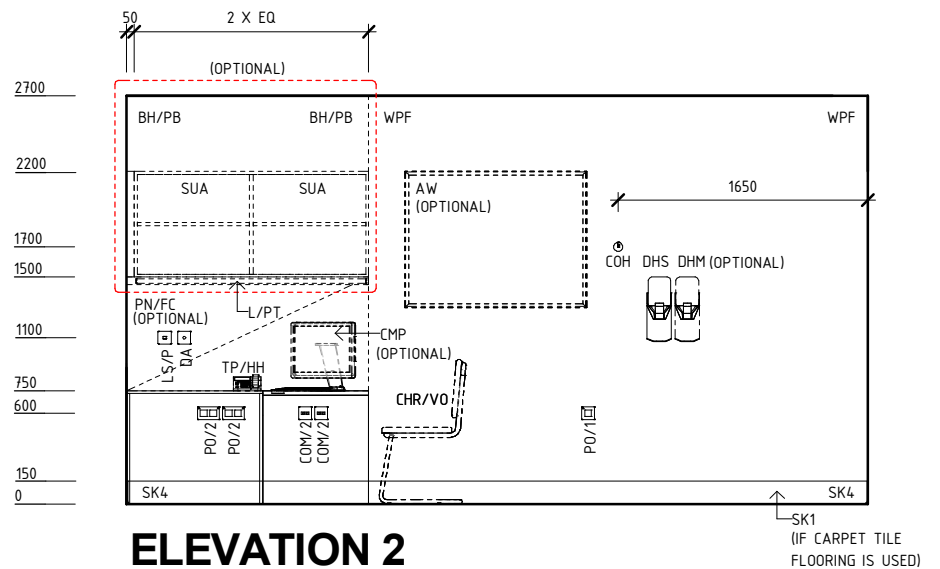
AW	ARTWORK	S	SUCTION
BH/PB	BULKHEAD - PLASTERBOARD, PAINT FINISH	SAC	STAFF ASSIST CALL
BLVI	BLIND - VENETIAN, INTEGRAL	SB	SUCTION BOTTLE
BRCPM	BRACKET - PATIENT MONITOR	SBIN	SHARPS BIN
BRCS	BRACKET - SHARPS	SBK	SPLASHBACK
BRCSB	BRACKET - SUCTION BOTTLE	SG	SAFETY GLASS
CAC	CABLE ACCESS CAP	SK1	MDF SKIRTING
CBD/W	CUPBOARD - WALL MOUNTED	SK4	FLOOR VINYL COVED SKIRTING
CBS	CURTAIN - BED SCREEN	SUA	SHELVING UNIT - ADJUSTABLE
CHR/E	CHAIR - ERGONOMIC, OFFICE	T/D	TROLLEY - DRESSING
CHR/VO	CHAIR - VISITOR, OFFICE	TAP/ST	TAPWARE - SENSOR TAP
CMP	COMPUTER	TP/HH	TELEPHONE - HANDSET, HANDSFREE
CO/EX	COUCH - EXAMINATION, ELECTRIC	V1	VINYL FLOORING, STANDARD SLIP RESISTANT
COH	COAT HOOK	V6	VINYL FLOORING, NON SLIP - TEXTURED
COM/1	COMMUNICATION OUTLET - SINGLE	WBC/20	WASTE BIN - CLINICAL, 20 LITRE
COM/2	COMMUNICATION OUTLET - DOUBLE	WBG/20	WASTE BIN - GENERAL, 20 LITRE
CPT/T	CARPET TILES	WP/L	WALL PANEL, LAMINATE
CTBS	CURTAIN TRACK - BED SCREEN	WPF	WALL PAINT FINISH
DA	DURESS ALARM		
DBR	DISPENSER - BED ROLL		
DDG	DISPENSER - DISPOSABLE GLOVES		
DFP	DOOR AND DOOR FRAME PROTECTION		
DGS/WM	DIAGNOSTIC SET - WALL MOUNTED		
DHM	DISPENSER - HAND MOISTURISER		
DHS	DISPENSER - HAND SANITISER		
DHT	DISPENSER - PAPER HAND TOWEL		
DK	DESK		
DSA	DISPENSER - SOAP, ANTISEPTIC		
EC	EMERGENCY CALL		
FST	FOOTSTOOL		
HWB/V	HAND WASH BASIN - VANITY		
L/EXC	LIGHT - EXAMINATION, CEILING MOUNTED		
L/PT	LIGHT - PELMET TASK LIGHT		
LS/EL	LIGHT SWITCH - EXAMINATION LIGHT		
LS/P	LIGHT SWITCH - PELMET TASK LIGHT		
LS/R	LIGHT SWITCH - ROOM		
MA	MEDICAL AIR		
MON	MONITOR		
MR	MIRROR		
O2	OXYGEN		
OP	OBSERVATION PANEL		
PC	PATIENT CALL		
PCH	PATIENT CALL HANDSET		
PN/FC	PINBOARD - FABRIC COVERED		
PO/1	POWER OUTLET - SINGLE		
PO/1E	POWER OUTLET - EMERGENCY, SINGLE		
PO/2	POWER OUTLET - DOUBLE		
PO/C	POWER OUTLET - CLEANER'S		



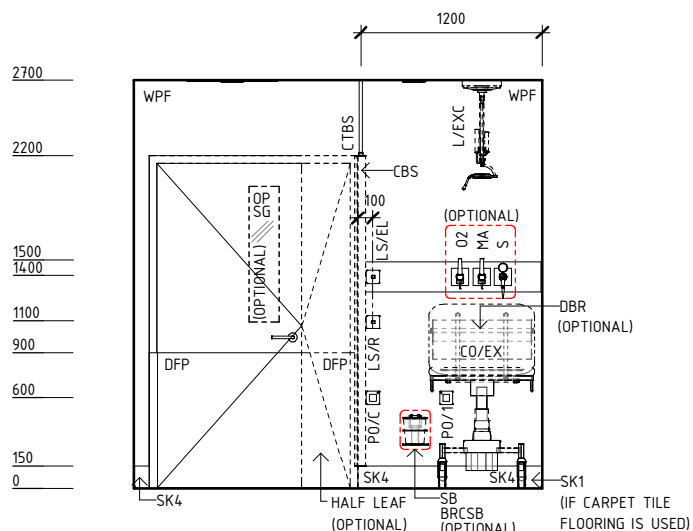
PLAN



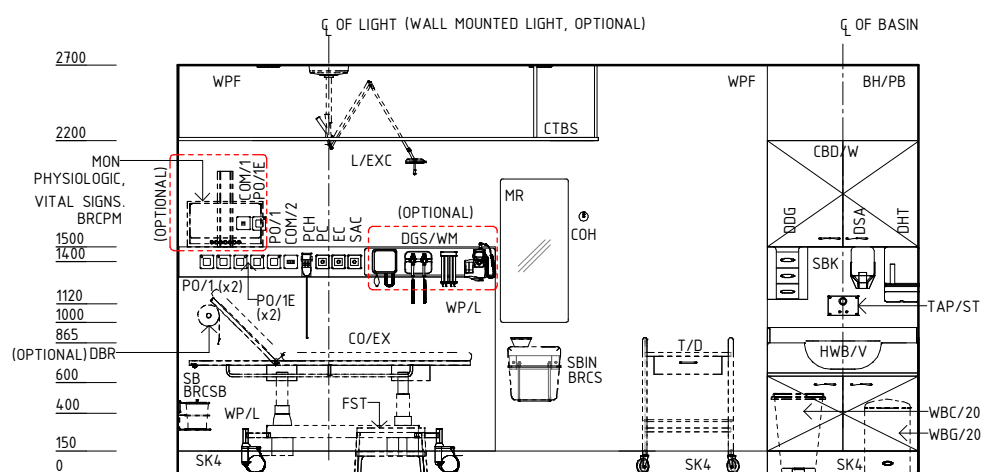
ELEVATION 1



ELEVATION 2



ELEVATION 3



ELEVATION 4

REV	DESCRIPTION	DATE	BY	REV	DESCRIPTION	DATE	BY	COMPATIBILITY
1	FIRST ISSUE	07.01.15	NB					
2	GENERAL REVISION	26.08.22	RA					



International Health Facility Guidelines at:  
www.healthdesign.com.au/iHFG  
Editable version of Standard Components on  
Health Facility Briefing System (HFBS) at:  
www.healthdesign.com.au ©TAHPI



DESIGNED	APPROVED	DATE	SCALE(S)	SHEET
RA	CC	26.08.22	1 : 50	1 OF 2
REVIT FILE NAME		PAPER DRAWING ID		ISSUE
cons-i		cons-i-1		2

# iHFG Standard Components

## Room Layout Sheet

RLS Room Code

cons-i

RDS Room Code

cons-i

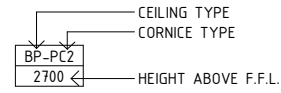
Room Name **Consult/ Exam Room - Alternate Option**

### GENERAL NOTES:

THIS DRAWING TO BE READ IN CONJUNCTION WITH R.D.S. (ROOM DATA SHEETS) WHICH TAKES PRECEDENCE.

ALL SERVICES INDICATED ARE INDICATIVE AND SUBJECTED TO DETAILED PROJECT SPECIFIC ENGINEERING DESIGN.

### CEILING LEGEND:



ACT-PC4 ACOUSTIC CEILING TILES WITH POWDERCOAT ALUMINIUM CORNICE, SHADOW LINE

BH/PB PLASTERBOARD BULKHEAD, PAINT FINISH

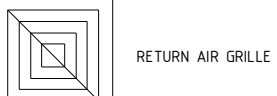
TILE CEILING GRID (600 x 600)

GRID LINE

### ELECTRICAL LEGEND:

L/CC LIGHT - COLOUR CORRECTED

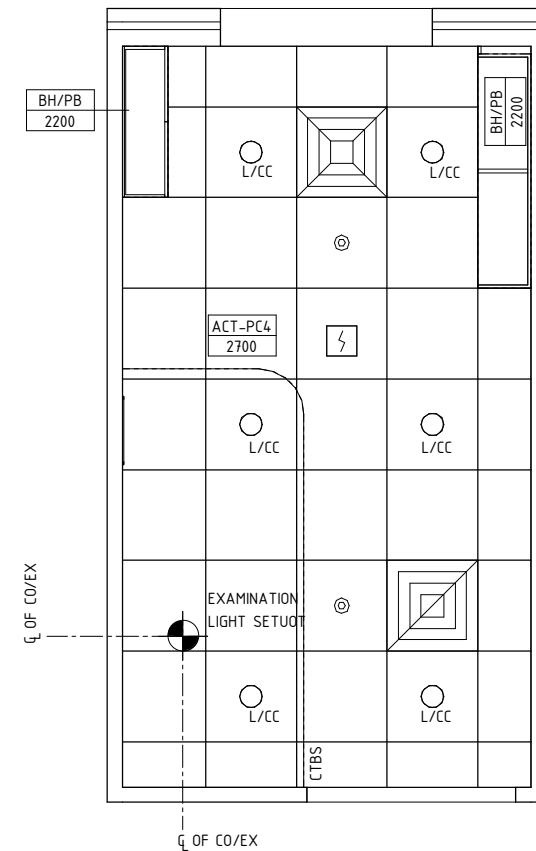
### MECHANICAL LEGEND:



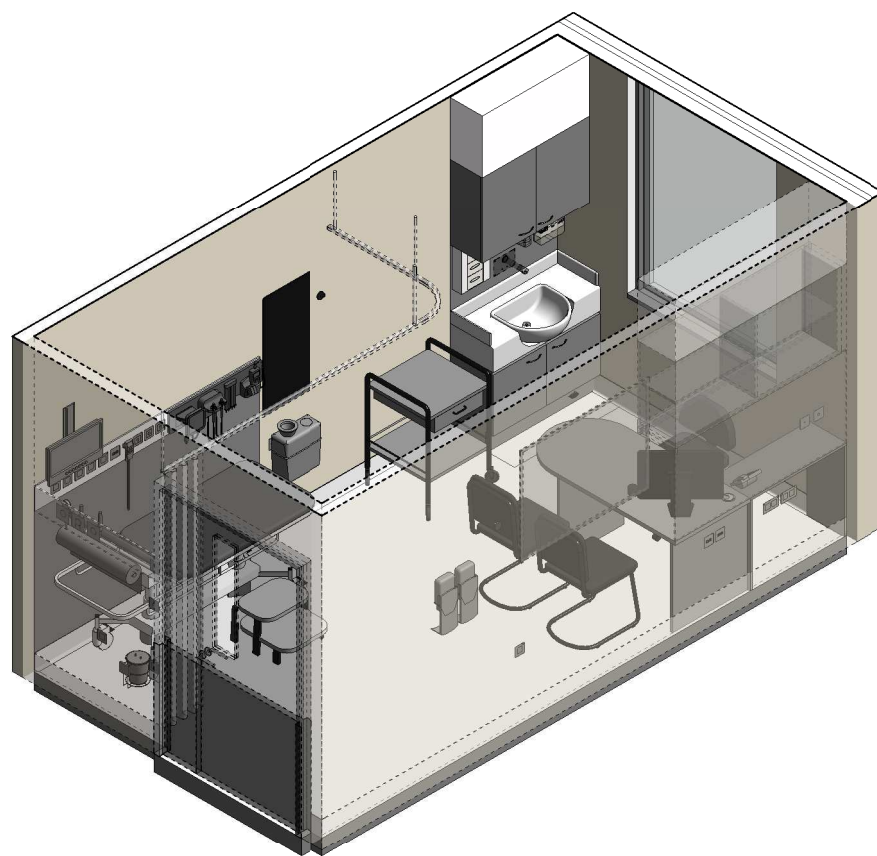
### FIRE SERVICES LEGEND:

SMOKE DETECTOR

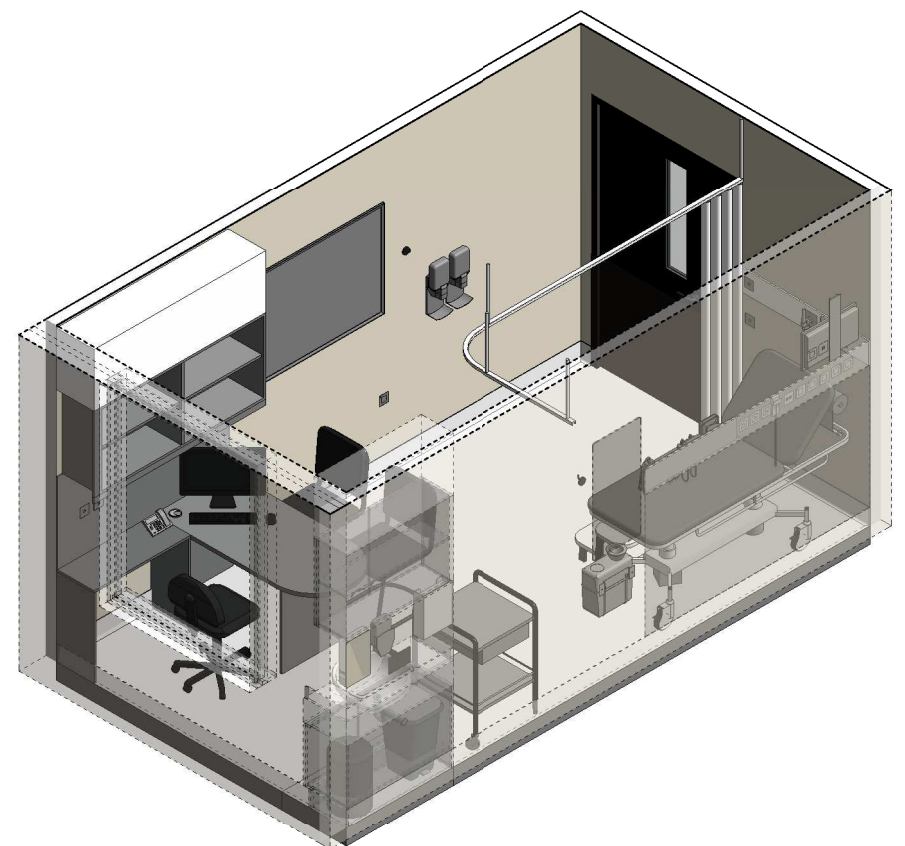
SPRINKLER



**REFLECTED CEILING PLAN**



**ISOMETRIC VIEW 1**



**ISOMETRIC VIEW 2**

REV	DESCRIPTION	DATE	BY	REV	DESCRIPTION	DATE	BY	COMPATIBILITY
1	FIRST ISSUE	07.01.15	NB					
2	GENERAL REVISION	26.08.22	RA					



International Health Facility Guidelines at:  
www.healthdesign.com.au/iHFG  
Editable version of Standard Components on  
Health Facility Briefing System (HFBS) at:  
www.healthdesign.com.au ©TAHPI



DESIGNED	APPROVED	DATE	SCALE(S)	SHEET
RA	CC	26.08.22	1 : 50	2 OF 2
REVIT FILE NAME		PAPER DRAWING ID		ISSUE
cons-i		cons-i-2		2