

# iHFG Standard Components

## Room Layout Sheet

Room Name **Dental Workroom, 12m<sup>2</sup>**

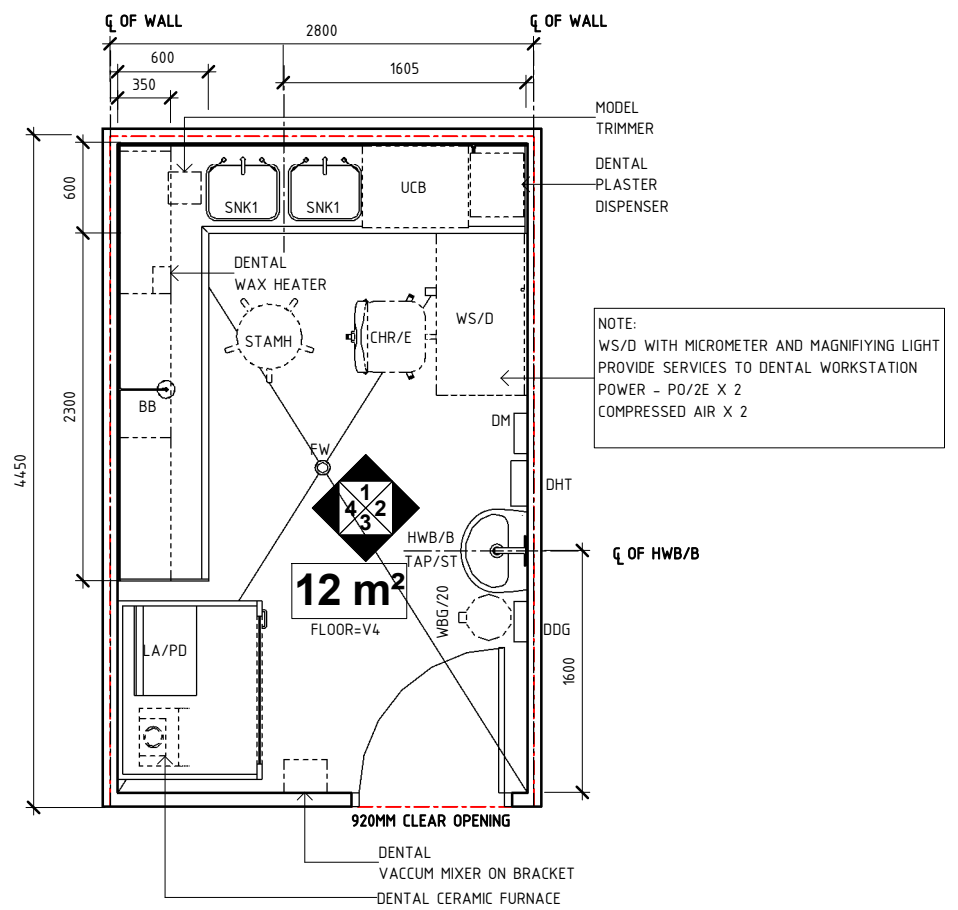
RLS Room Code

denw-12-i

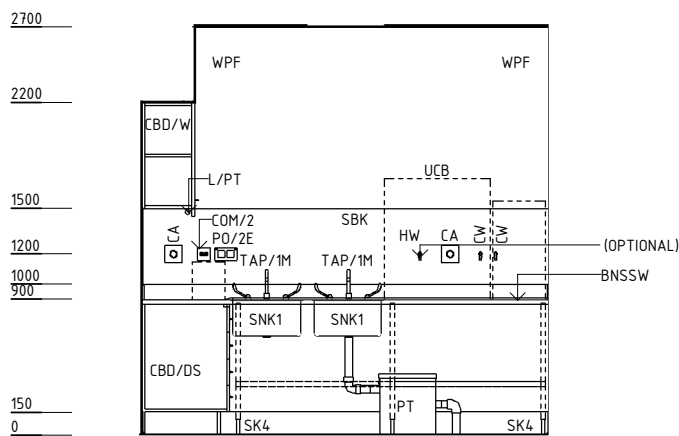
RDS Room Code

denw-12-i

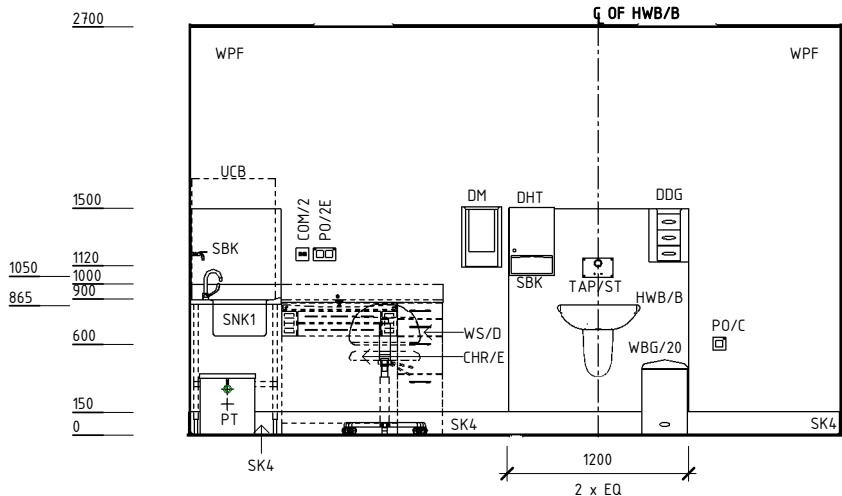
AS	ADJUSTABLE SHELF
BB	BUNSEN BURNER
BH/PB	BULKHEAD - PLASTERBOARD, PAINT FINISH
BNSSW	BENCH - STAINLESS STEEL, WET EDGE
CA	COMPRESSED AIR
CBD/DS	CUPBOARD - DRAWER UNIT, SPECIAL
CBD/UB	CUPBOARD - UNDER BENCH
CBD/W	CUPBOARD - WALL MOUNTED
CHR/E	CHAIR - ERGONOMIC, OFFICE
COM/2	COMMUNICATION OUTLET - DOUBLE
CW	COLD WATER OUTLET
DDG	DISPENSER - DISPOSABLE GLOVES
DFP	DOOR AND DOOR FRAME PROTECTION
DHT	DISPENSER - PAPER HAND TOWEL
DM	DISPENSER - MASK
EXH	EXHAUST HOOD
FW	FLOOR WASTE
HW	HOT WATER OUTLET
HWB/B	HAND WASH BASIN - TYPE 'B'
L/PT	LIGHT - PELMET TASK LIGHT
LA/PD	LATHE - POLISHING, DENTAL
LS/P	LIGHT SWITCH - PELMET TASK LIGHT
LS/R	LIGHT SWITCH - ROOM
OP	OBSERVATION PANEL
PO/1E	POWER OUTLET - EMERGENCY, SINGLE
PO/2E	POWER OUTLET - EMERGENCY, DOUBLE
PO/C	POWER OUTLET - CLEANER'S
PT	PLASTER TRAP
SBK	SPLASHBACK
SK4	FLOOR VINYL COVED SKIRTING
SNK1	SINK - 450x350x250D
STAMH	STOOL - ADJUSTABLE, MOBILE, HIGH
TAP/1M	TAPWARE - SINGLE MIXER
TAP/ST	TAPWARE - SENSOR TAP
UCB	ULTRASONIC CLEANER BENCHTOP
V4	VINYL FLOORING, NON SLIP - SAFETY
WBG/20	WASTE BIN - GENERAL, 20 LITRE
WPF	WALL PAINT FINISH
WS/D	WORKSTATION - DENTAL



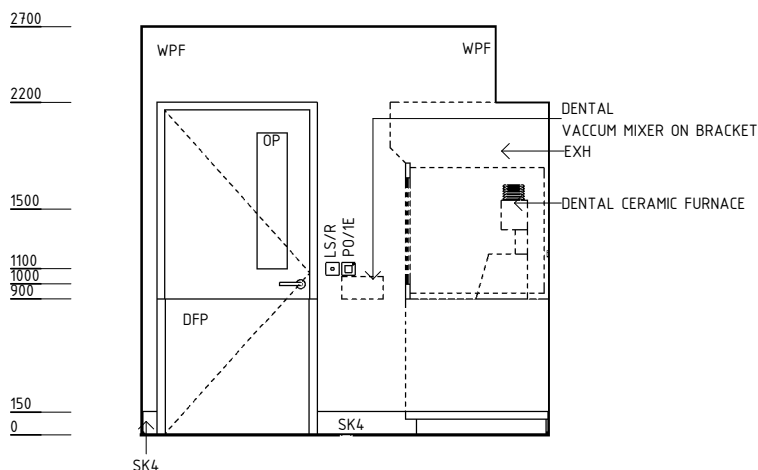
**PLAN**



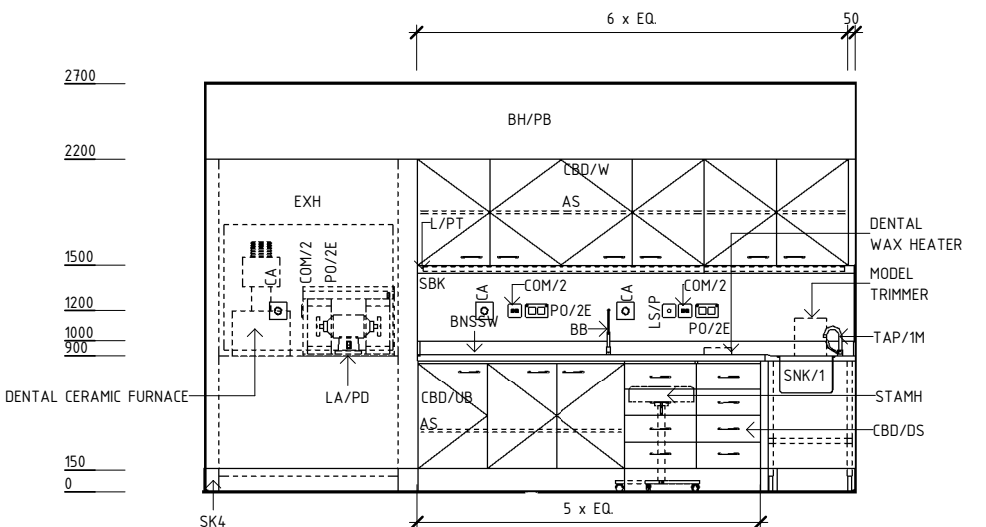
**ELEVATION 1**



**ELEVATION 2**



**ELEVATION 3**



**ELEVATION 4**

REV	DESCRIPTION	DATE	BY	REV	DESCRIPTION	DATE	BY	COMPATIBILITY
1	FIRST ISSUE	24.10.10	SS	4	GENERAL REVISION	15.09.22	AK	iHFG
2	GENERAL REVISION	30.08.11	SD					
3	GENERAL REVISION	30.10.12	KC					



International Health Facility Guidelines at:  
[www.healthdesign.com.au/iHFG](http://www.healthdesign.com.au/iHFG)  
 Editable version of Standard Components on  
 Health Facility Briefing System (HFBS) at:  
[www.healthdesign.com.au/TAHPI](http://www.healthdesign.com.au/TAHPI)



DESIGNED	APPROVED	DATE	SCALE(S)	SHEET
AK	RH	15.09.22	1 : 50	1 OF 2
REVIT FILE NAME		PAPER DRAWING ID		ISSUE
denw-12-i		denw-12-i-1		4

# iHFG Standard Components

## Room Layout Sheet

RLS Room Code

denw-12-i

Room Name

Dental Workroom, 12m2

RDS Room Code

denw-12-i

### GENERAL NOTES:

THIS DRAWING TO BE READ IN CONJUNCTION WITH R.D.S. (ROOM DATA SHEETS) WHICH TAKES PRECEDENCE.

ALL SERVICES INDICATED ARE INDICATIVE AND SUBJECT TO DETAILED PROJECT SPECIFIC ENGINEERING DESIGN.

### CEILING LEGEND:



HEIGHT ABOVE F.F.L.

- BH/PB PLASTERBOARD BULKHEAD, PAINT FINISH
- PB-PC3 PLASTERBOARD FLUSH SET CEILING, PAINT FINISH WITH SQUARE SET CORNICE
- GRID LINE

### ELECTRICAL LEGEND:

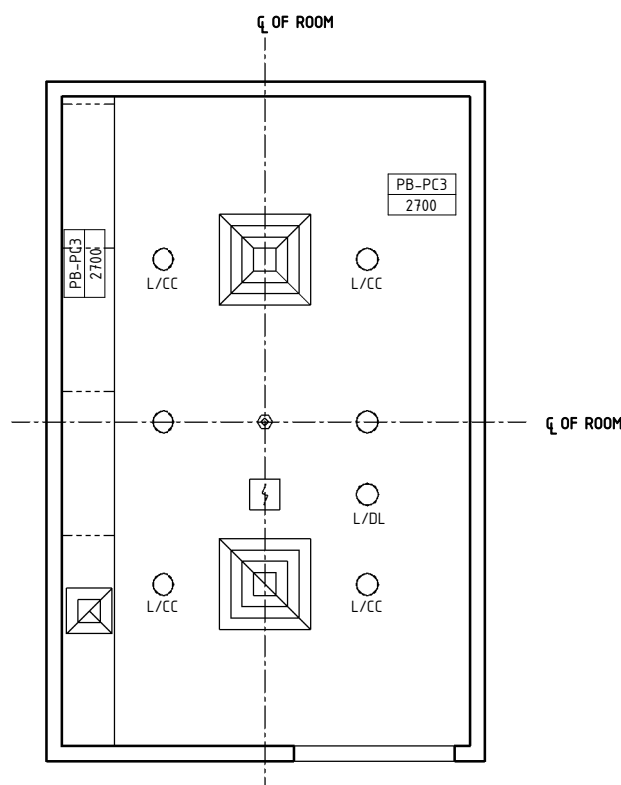
- L/CC LIGHT - COLOUR CORRECTED
- L/DL LIGHT: DOWNLIGHT

### MECHANICAL LEGEND:

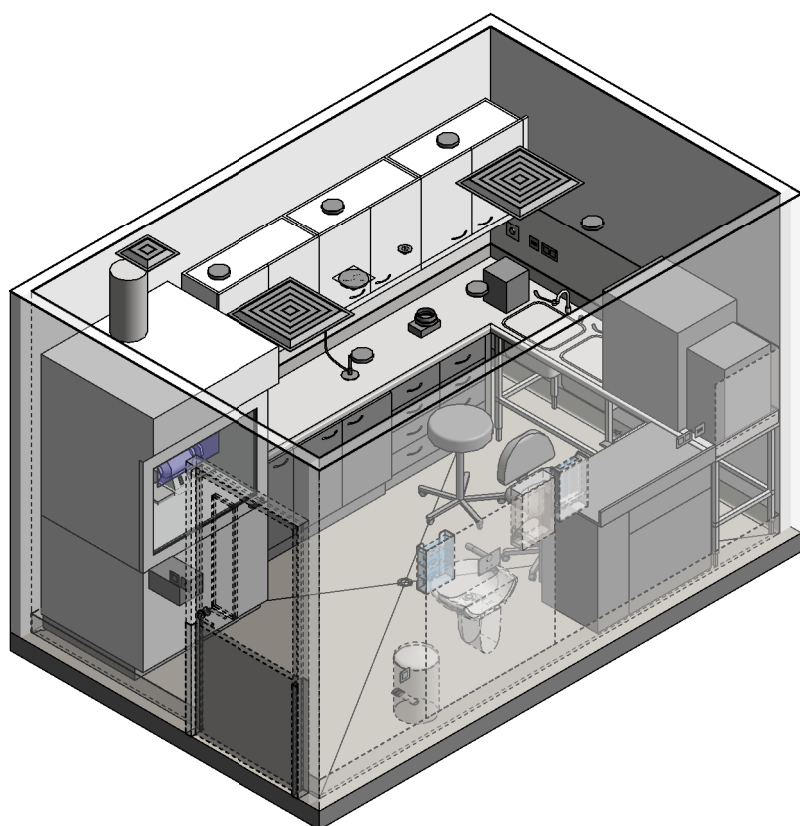
- SUPPLY AIR GRILLE
- RETURN AIR GRILLE
- EXHAUST GRILLE

### FIRE SERVICES LEGEND:

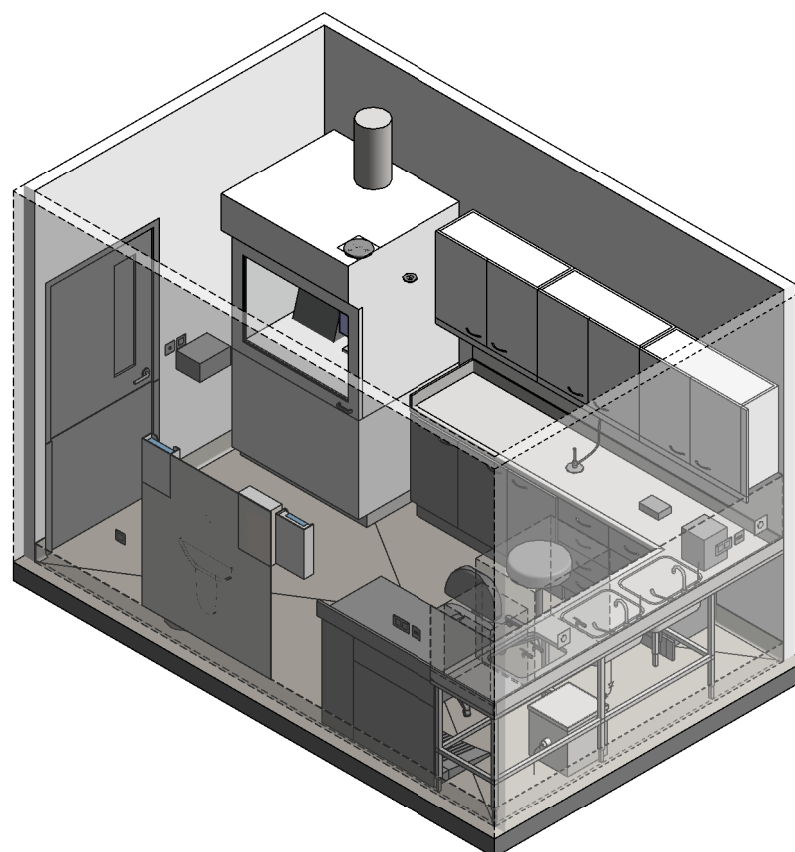
- SMOKE DETECTOR
- SPRINKLER



REFLECTED CEILING PLAN



ISOMETRIC VIEW 01



ISOMETRIC VIEW 02

REV	DESCRIPTION	DATE	BY	REV	DESCRIPTION	DATE	BY	COMPATIBILITY																				
1	FIRST ISSUE	24.10.10	SS	4	GENERAL REVISION	15.09.22	AK	iHFG																				
2	GENERAL REVISION	30.08.11	SD																									
3	GENERAL REVISION	30.10.12	KC																									
<table border="1"> <thead> <tr> <th>DESIGNED</th> <th>APPROVED</th> <th>DATE</th> <th>SCALE(S)</th> <th>SHEET</th> </tr> </thead> <tbody> <tr> <td>AK</td> <td>RH</td> <td>15.09.22</td> <td>1 : 50</td> <td>2 OF 2</td> </tr> <tr> <td colspan="2">REVIT FILE NAME</td> <td colspan="2">PAPER DRAWING ID</td> <td>ISSUE</td> </tr> <tr> <td colspan="2">denw-12-i</td> <td colspan="2">denw-12-i-2</td> <td>4</td> </tr> </tbody> </table>								DESIGNED	APPROVED	DATE	SCALE(S)	SHEET	AK	RH	15.09.22	1 : 50	2 OF 2	REVIT FILE NAME		PAPER DRAWING ID		ISSUE	denw-12-i		denw-12-i-2		4	
DESIGNED	APPROVED	DATE	SCALE(S)	SHEET																								
AK	RH	15.09.22	1 : 50	2 OF 2																								
REVIT FILE NAME		PAPER DRAWING ID		ISSUE																								
denw-12-i		denw-12-i-2		4																								