

# iHFG Standard Components

## Room Layout Sheet

RLS Room Code

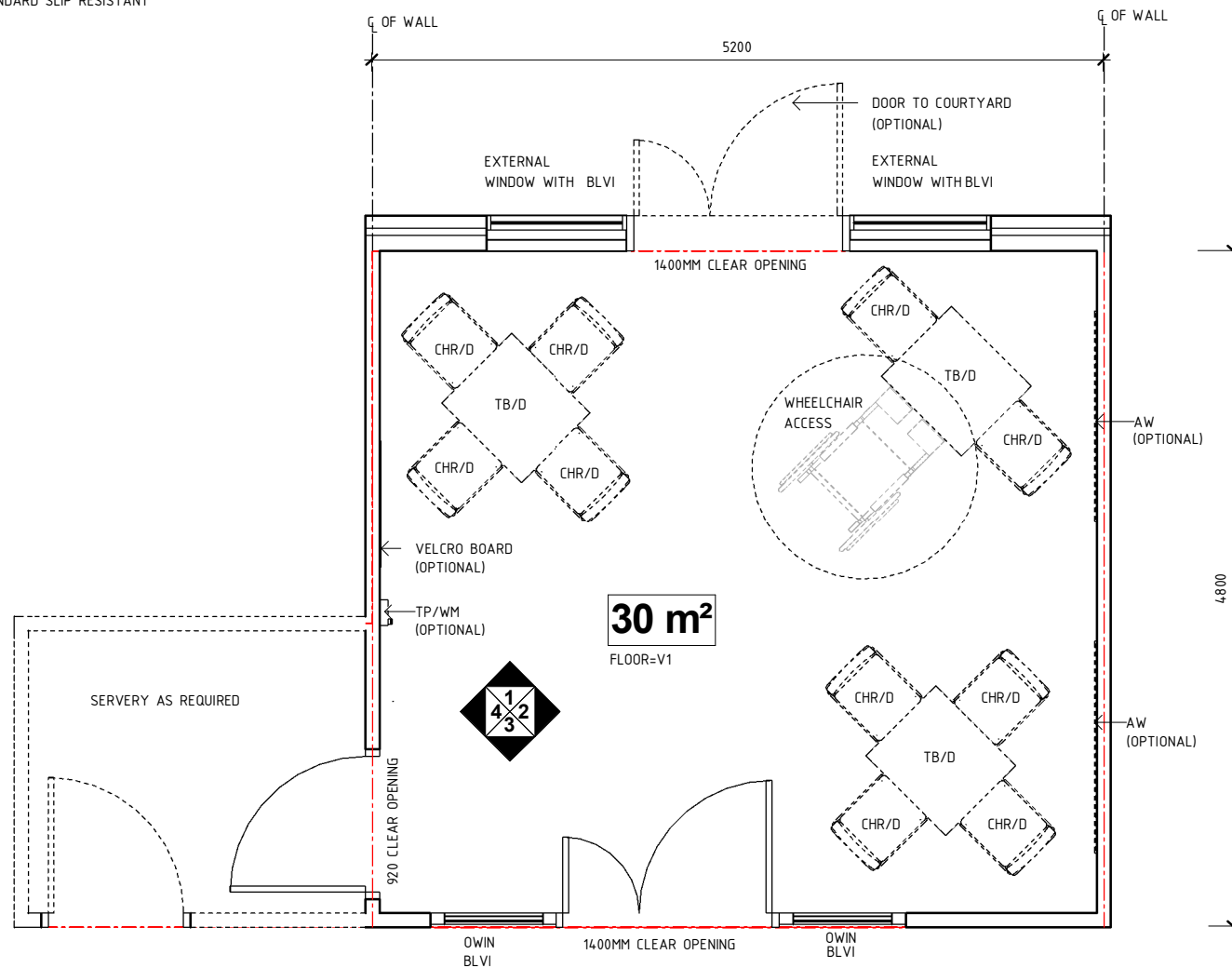
dinhm-i

RDS Room Code

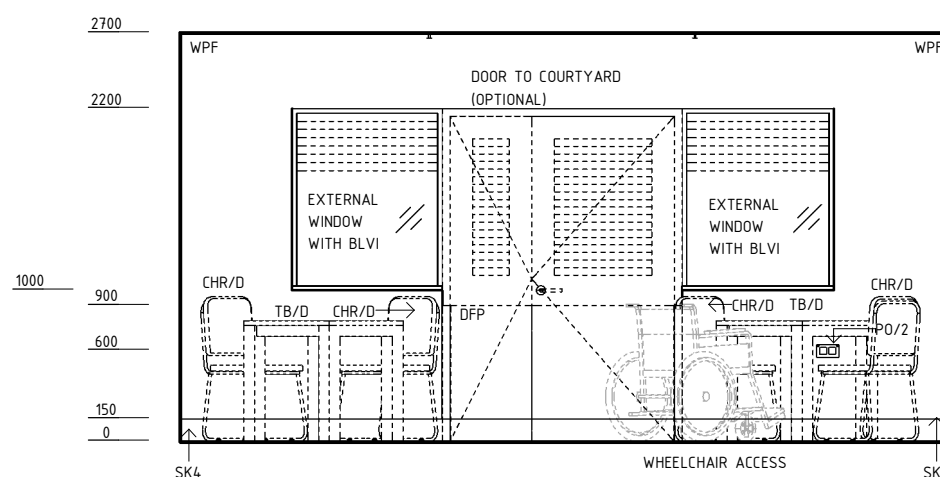
dinhm-i

Room Name **Dining Room (Mental Health)**

- AW ARTWORK
- BLVI BLIND - VENETIAN, INTEGRAL
- CHR/D CHAIR - DINING
- DFP DOOR AND DOOR FRAME PROTECTION
- OWIN OBSERVATION WINDOW
- PO/2 POWER OUTLET - DOUBLE
- SK4 FLOOR VINYL COVERED SKIRTING
- TB/D TABLE - DINING
- TP/WM TELEPHONE - WALL MOUNTED
- V1 VINYL FLOORING, STANDARD SLIP RESISTANT
- WPF WALL PAINT FINISH



**PLAN**



**ELEVATION 1**

REV	DESCRIPTION	DATE	BY	REV	DESCRIPTION	DATE	BY	COMPATIBILITY
1	FIRST ISSUE	24.10.10	CC	4	GENERAL REVISION	25.05.23	SS	
2	GENERAL REVISION	30.08.11	ASD					
3	GENERAL REVISION	31.10.12	KC					



International Health Facility Guidelines at:  
[www.healthdesign.com.au/iHFG](http://www.healthdesign.com.au/iHFG)  
 Editable version of Standard Components on  
 Health Facility Briefing System (HFBS) at:  
[www.healthdesign.com.au/TAHPI](http://www.healthdesign.com.au/TAHPI)



DESIGNED	APPROVED	DATE	SCALE(S)	SHEET
SS	SA	25.05.23	1 : 50	1 OF 4
REVIT FILE NAME		PAPER DRAWING ID		ISSUE
dinhm-i		dinhm-i-1		4

# iHFG Standard Components

## Room Layout Sheet

RLS Room Code

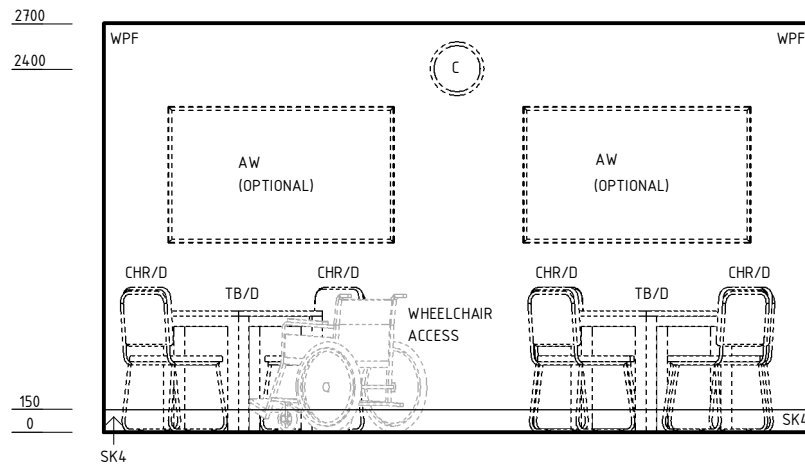
dinhm-i

RDS Room Code

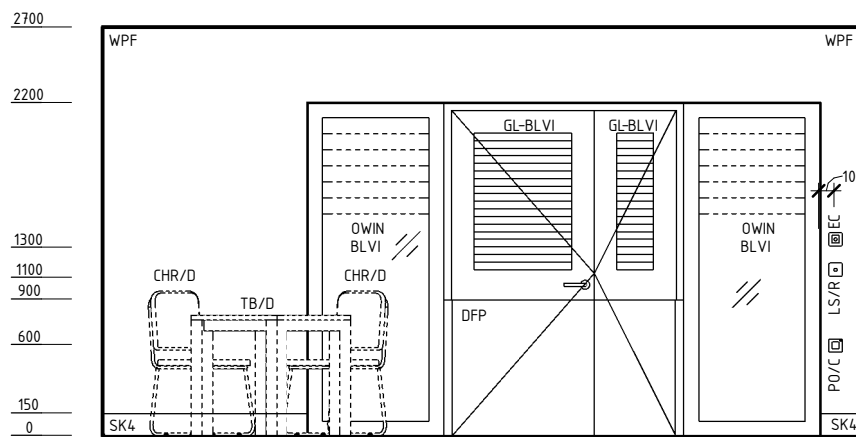
dinhm-i

Room Name | Dining Room (Mental Health)

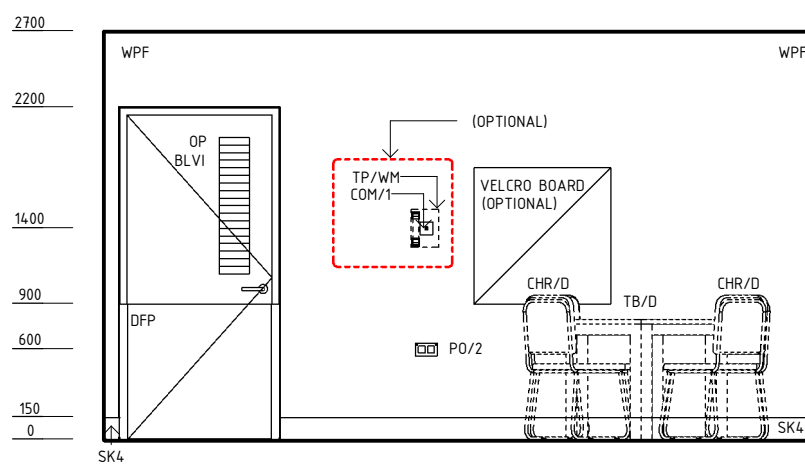
AW	ARTWORK
BLVI	BLIND - VENETIAN, INTEGRAL
C	CLOCK
CHR/D	CHAIR - DINING
COM/1	COMMUNICATION OUTLET - SINGLE
DFP	DOOR AND DOOR FRAME PROTECTION
EC	EMERGENCY CALL
GL	GLAZING
LS/R	LIGHT SWITCH - ROOM
OP	OBSERVATION PANEL
OWIN	OBSERVATION WINDOW
PO/2	POWER OUTLET - DOUBLE
PO/C	POWER OUTLET - CLEANER'S
SK4	FLOOR VINYL COVERED SKIRTING
TB/D	TABLE - DINING
TP/WM	TELEPHONE - WALL MOUNTED
WPF	WALL PAINT FINISH



**ELEVATION 2**



**ELEVATION 3**



**ELEVATION 4**

REV	DESCRIPTION	DATE	BY	REV	DESCRIPTION	DATE	BY	COMPATIBILITY
1	FIRST ISSUE	24.10.10	CC	4	GENERAL REVISION	25.05.23	SS	iHFG
2	GENERAL REVISION	30.08.11	ASD					
3	GENERAL REVISION	31.10.12	KC					



International Health Facility Guidelines at:  
www.healthdesign.com.au/iHFG  
Editable version of Standard Components on  
Health Facility Briefing System (HFBS) at:  
www.healthdesign.com.au/TAHPI



DESIGNED	APPROVED	DATE	SCALE(S)	SHEET
SS	SA	25.05.23	1 : 50	2 OF 4
REVIT FILE NAME		PAPER DRAWING ID		ISSUE
dinhm-i		dinhm-i-2		4

# iHFG Standard Components

## Room Layout Sheet

RLS Room Code

dinhm-i

RDS Room Code

dinhm-i

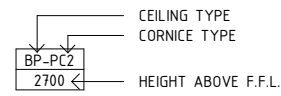
Room Name | Dining Room (Mental Health)

### GENERAL NOTES:

THIS DRAWING TO BE READ IN CONJUNCTION WITH R.D.S. (ROOM DATA SHEETS) WHICH TAKES PRECEDENCE.

ALL SERVICES INDICATED ARE INDICATIVE AND SUBJECTED TO DETAILED PROJECT SPECIFIC ENGINEERING DESIGN.

### CEILING LEGEND:

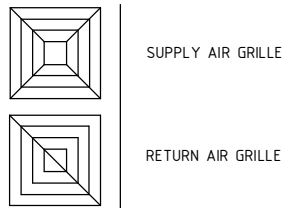


PB-PC3 | PLASTERBOARD FLUSH SET CEILING, WITH PLASTERBOARD SQUARE SET CORNICIE  
--- | GRID LINE

### ELECTRICAL LEGEND:

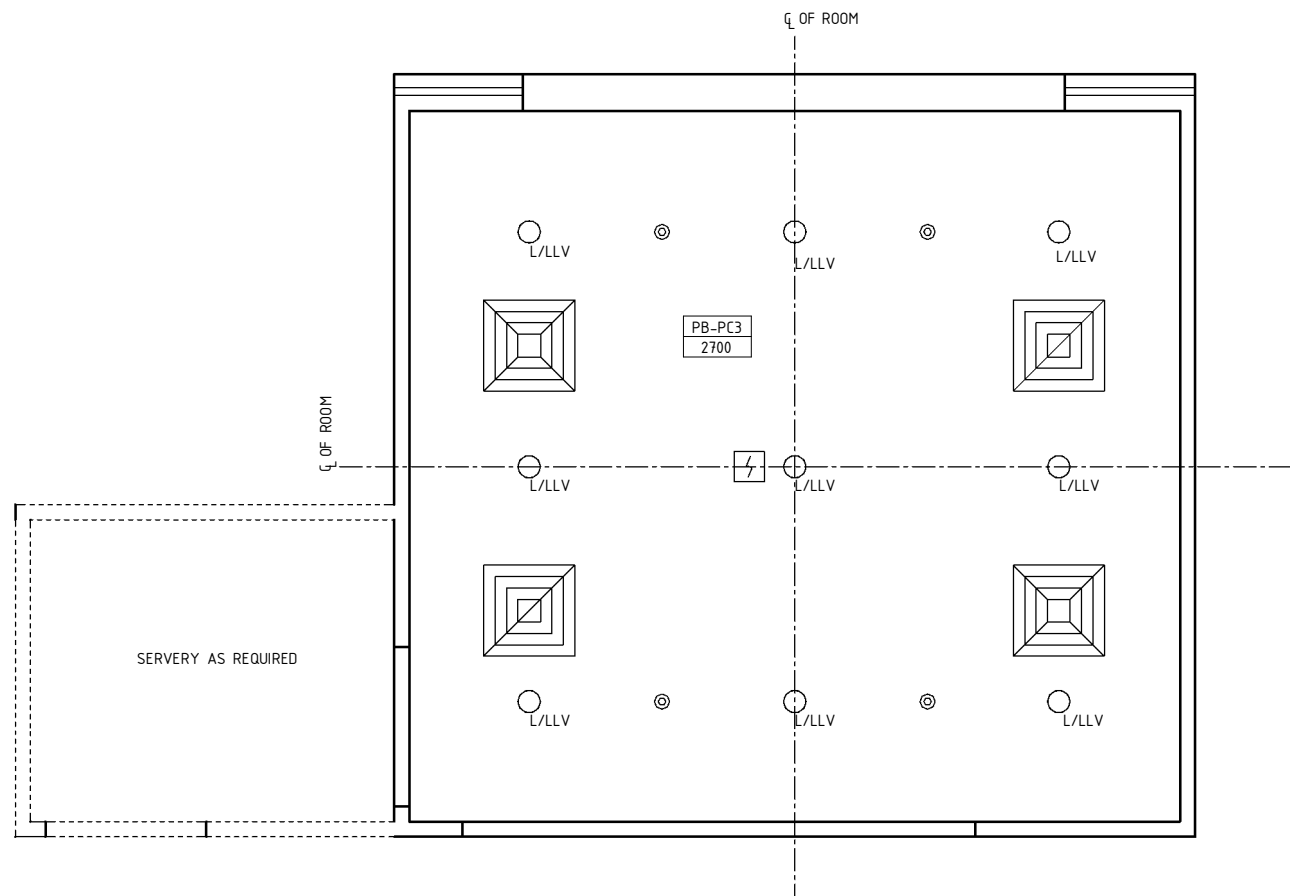
○ L/LLV | LIGHT - LED LIGHT, VANDAL PROOF

### MECHANICAL LEGEND:



### FIRE SERVICES LEGEND:

⚡ | SMOKE DETECTOR  
⊙ | SPRINKLER



**REFLECTED CEILING PLAN**

REV	DESCRIPTION	DATE	BY	REV	DESCRIPTION	DATE	BY	COMPATIBILITY
1	FIRST ISSUE	24.10.10	CC	4	GENERAL REVISION	25.05.23	SS	iHFG
2	GENERAL REVISION	30.08.11	ASD					
3	GENERAL REVISION	31.10.12	KC					

DESIGNED	APPROVED	DATE	SCALE(S)	SHEET
SS	SA	25.05.23	1 : 50	3 OF 4
REVIT FILE NAME		PAPER DRAWING ID		ISSUE
dinhm-i		dinhm-i-3		4

# iHFG Standard Components

Room Layout Sheet

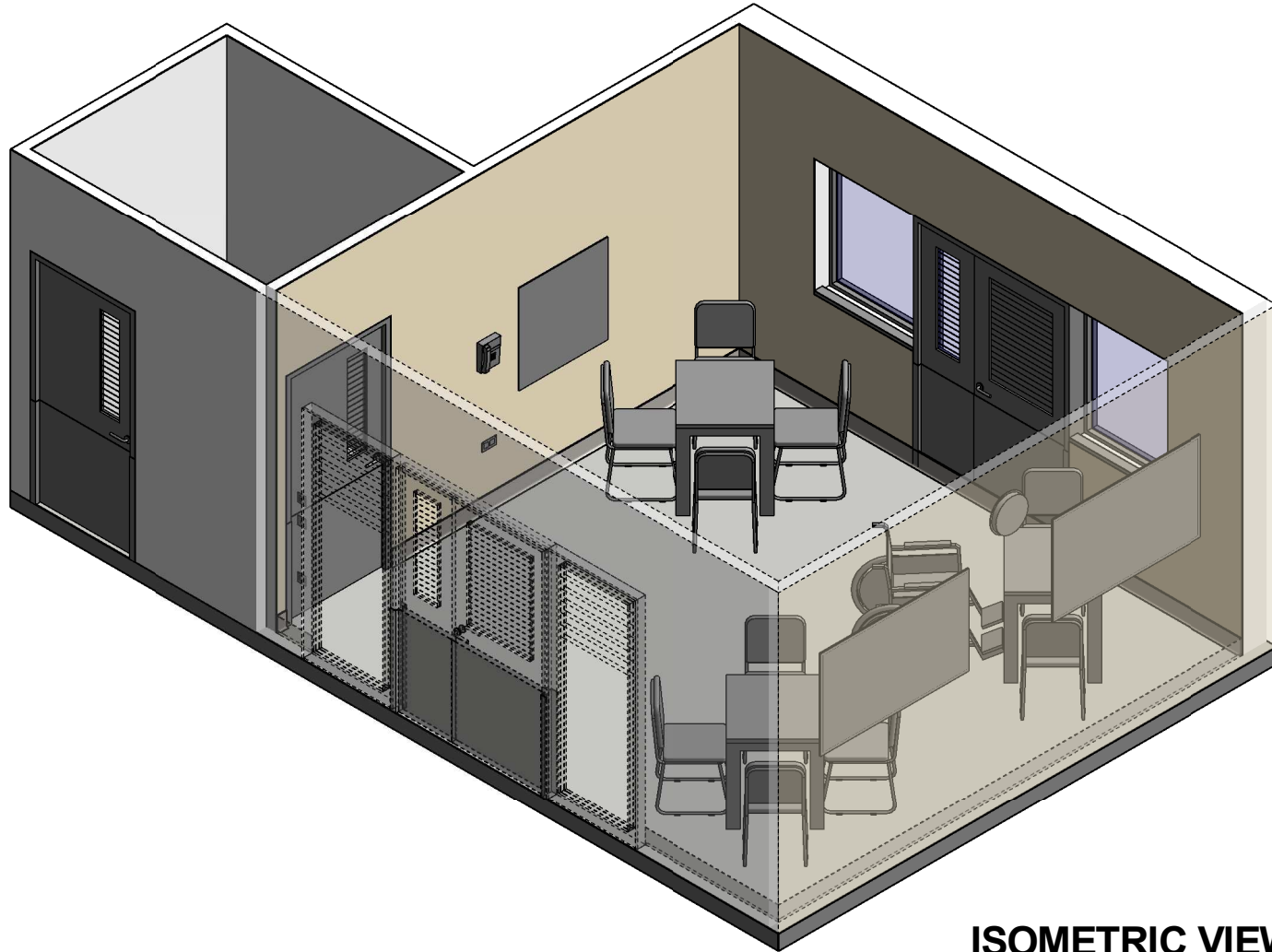
RLS Room Code

dinh-i

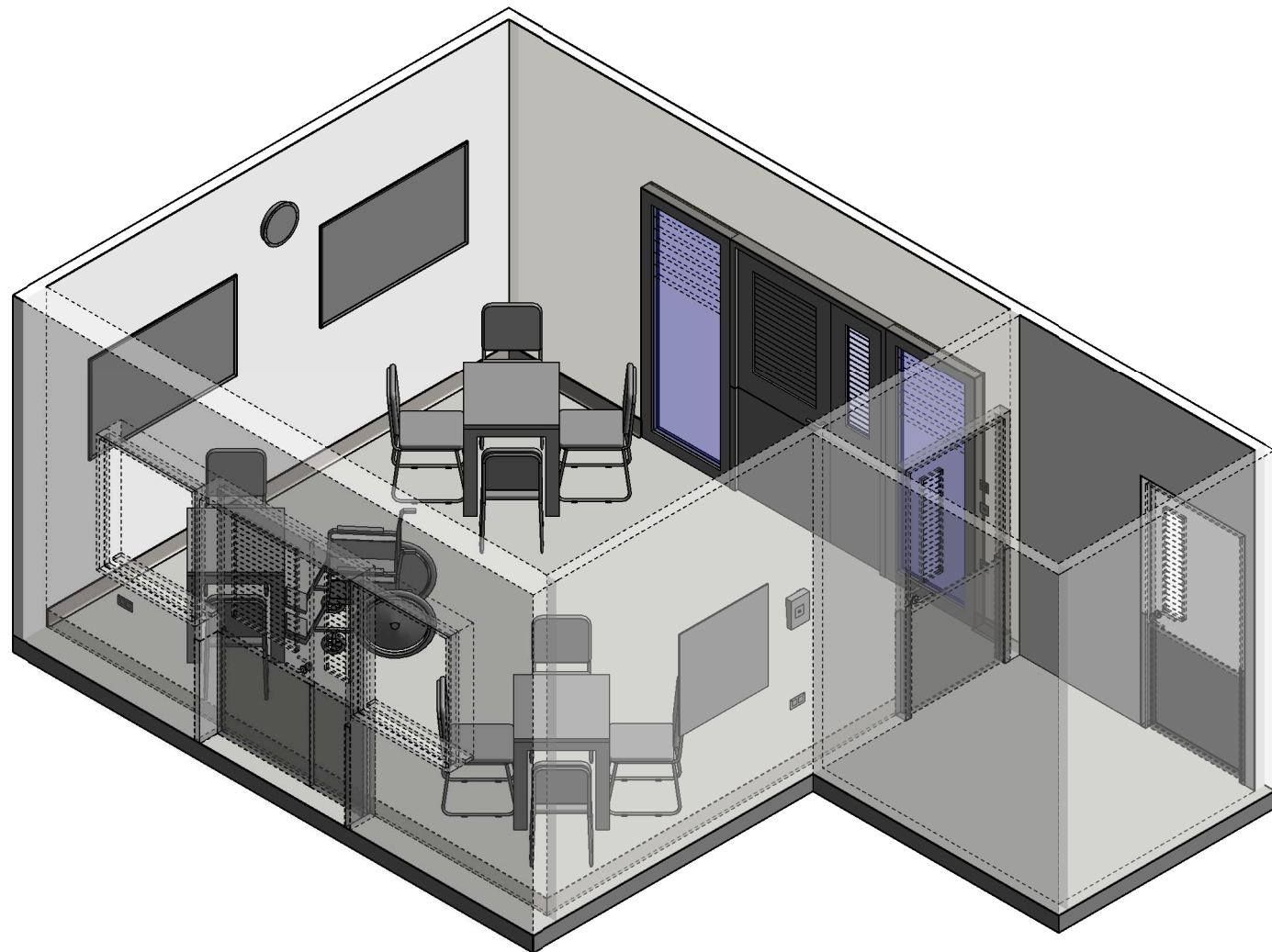
RDS Room Code

dinh-i

Room Name | Dining Room (Mental Health)



ISOMETRIC VIEW 01



ISOMETRIC VIEW 02

REV	DESCRIPTION	DATE	BY	REV	DESCRIPTION	DATE	BY	COMPATIBILITY
1	FIRST ISSUE	24.10.10	CC	4	GENERAL REVISION	25.05.23	SS	iHFG
2	GENERAL REVISION	30.08.11	ASD					
3	GENERAL REVISION	31.10.12	KC					

DESIGNED	APPROVED	DATE	SCALE(S)	SHEET
SS	SA	25.05.23		4 OF 4
REVIT FILE NAME		PAPER DRAWING ID		ISSUE
dinh-i		dinh-i-4		4

**iHFG** International Health Facility Guidelines

International Health Facility Guidelines at:  
[www.healthdesign.com.au/iHFG](http://www.healthdesign.com.au/iHFG)  
 Editable version of Standard Components on  
 Health Facility Briefing System (HFBS) at:  
[www.healthdesign.com.au](http://www.healthdesign.com.au) ©TAHPI



This document is for advisory purpose only