

iHFG Standard Components

Room Layout Sheet

Room Name **Dirty Utility - Sub**

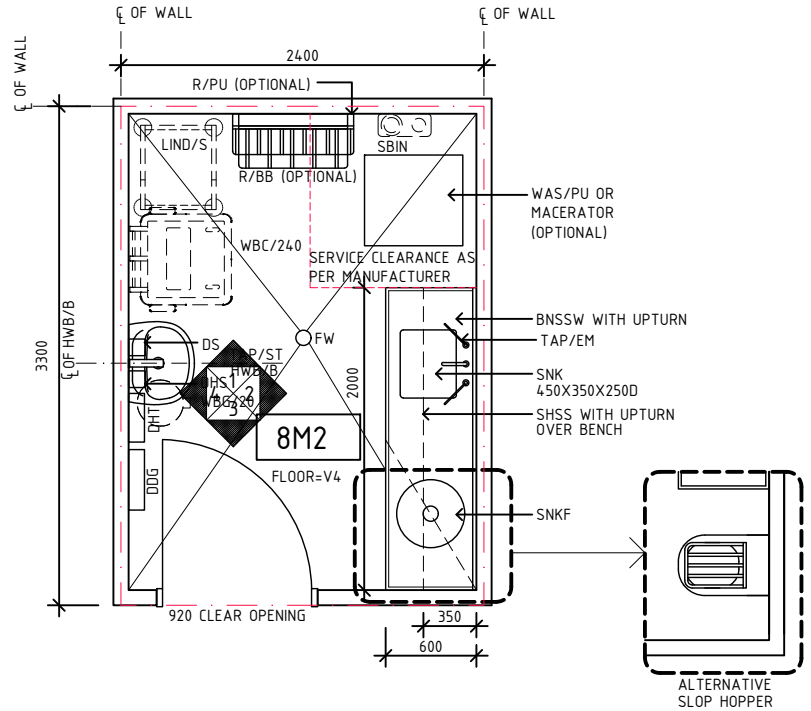
RLS Room Code

dtur-s-i

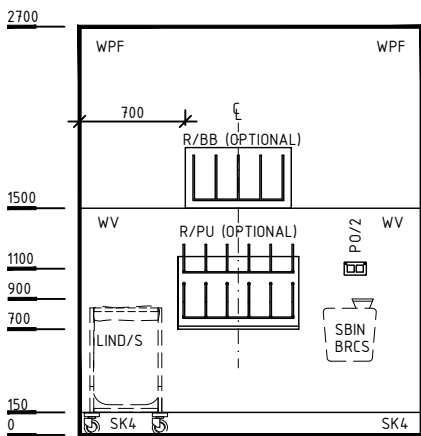
RDS Room Code

dtur-s-i

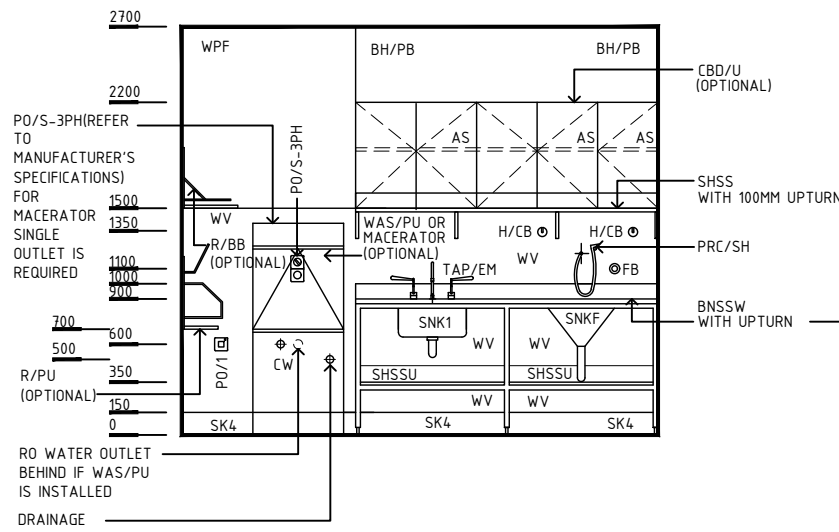
- BNSSW BENCH - STAINLESS STEEL, WET EDGE
- BRCS BRACKET - SHARPS
- CBD/U CUPBOARD - URINALYSIS
- CW COLD WATER OUTLET
- DDG DISPENSER - DISPOSABLE GLOVE
- DFP DOOR & DOOR FRAME PROTECTION
- DHT DISPENSER - HAND TOWEL
- DHS DISPENSER - HAND SANITISER
- DS DISPENSER - SOAP
- FB FLUSH BUTTON
- FW FLOOR WASTE
- H/CB HOOK - FOR CATHETER BAG
- H/EQ HOOK - EQUIPMENT
- HW HOT WATER OUTLET
- HWB/B HANDWASH BASIN - TYPE 'B'
- LIND/S LINEN CARRIER - DIRTY, SINGLE
- LS/R LIGHT SWITCH - ROOM
- OP OBSERVATION PANEL
- PO/IS POWER OUTLET - SPECIAL, SINGLE
- PO/2 POWER OUTLET - DOUBLE
- PRC/SH PRESSURE CONTROL - SPRAY HOSE
- R/BB RACK - BOWL/ BASIN
- R/PU RACK - PAN & URINALS
- RO REVERSE OSMOSIS
- SBIN SHARPS BIN
- SHSS SHELVING - STAINLESS STEEL
- SHSSU SHELVING UNIT - STAINLESS STEEL, UNDER BENCH
- SK4 FLOOR VINYL COVERED SKIRTING
- SNK1 SINK - 450x350x250D
- SNKF SINK - FLUSHING RIM
- SLH SLOP HOPPER
- TAP/EM TAPWARE - ELBOW MIXER
- TAP/ST TAPWARE - SENSOR TAP
- V4 VINYL FLOORING - NON SLIP SAFETY
- WAS/PU WASHER SANITISER - PAN & UTENSIL COMBINED
- WBC/240 WASTE BIN - CLINICAL, 240 LITRE
- WBP/20 WASTE BIN - GENERAL, 20 LITRE
- WPF WALL PAINT FINISH
- WV WALL VINYL



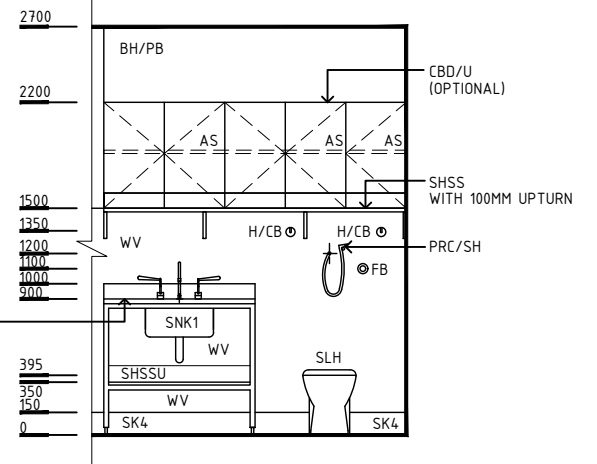
PLAN



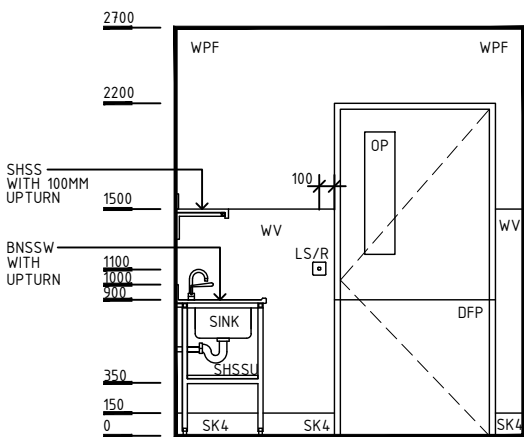
ELEVATION 1



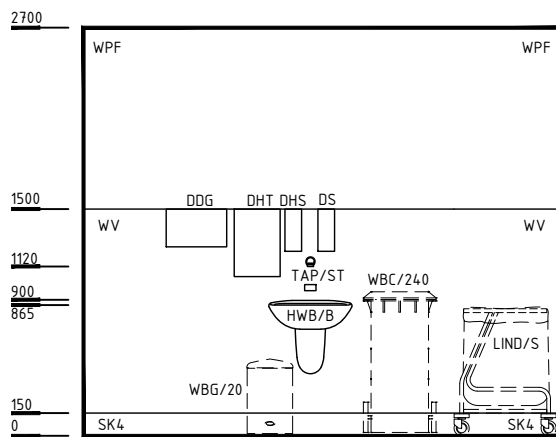
ELEVATION 2



ELEVATION 2 ALTERNATIVE



ELEVATION 3



ELEVATION 4

REV	DESCRIPTION	DATE	BY	REV	DESCRIPTION	DATE	BY	COMPATIBILITY
1	FIRST ISSUE	05.03.17	RC					
2	GENERAL REVISION	27.01.23	AM					

iHFG Standard Components

Room Layout Sheet

Room Name **Dirty Utility - Sub**

RLS Room Code

dtur-s-i

RDS Room Code

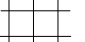
dtur-s-i

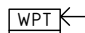
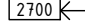
GENERAL NOTES:

THIS DRAWING TO BE READ IN CONJUNCTION WITH R.D.S. (ROOM DATA SHEETS) WHICH TAKES PRECEDENCE.


ALL SERVICES INDICATED ARE INDICATIVE AND SUBJECT TO DETAILED PROJECT SPECIFIC ENGINEERING DESIGN.

CEILING LEGEND:

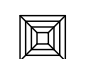
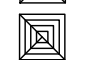
- BH/PB | PLASTERBOARD BULKHEAD, PAINT
- PCS | POWDERCOAT ALUMINIUM CORNICE, FLUSHED AGAINST WALL
- WPT | WATER RESISTANT, DROP IN TILES
-  | TILE CEILING GRID (600 x 600)

-  | CEILING TYPE
-  | HEIGHT ABOVE F.F.L.



ELECTRICAL LEGEND:

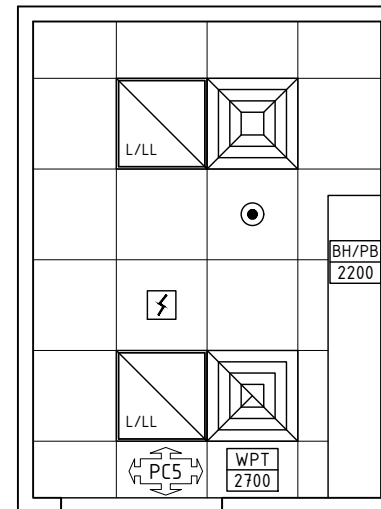
-  | LIGHT - LED LIGHT

MECHANICAL LEGEND:




-  | SUPPLY AIR GRILLE
-  | EXHAUST AIR GRILLE

FIRE SERVICES LEGEND:

-  | SMOKE DETECTOR
-  | SPRINKLER



REFLECTED CEILING PLAN

REV	DESCRIPTION	DATE	BY	REV	DESCRIPTION	DATE	BY	COMPATIBILITY	
1	FIRST ISSUE	05.03.17	RC						
2	GENERAL REVISION	27.01.23	AM						
									
 International Health Facility Guidelines						International Health Facility Guidelines at: www.healthdesign.com.au/iHFG Editable version of Standard Components on Health Facility Briefing System (HFBS) at: www.healthdesign.com.au ©TAHPI			
DESIGNED	APPROVED	DATE	SCALE(S)	SHEET					
AM	RH	27.01.23	1:50 in A3	2 OF 2					
CAD FILE NAME			PAPER DRAWING ID	ISSUE					
dtur-s-i			dtur-s-i-2	2					

This document is for advisory purpose only