

iHFG Standard Components

Room Layout Sheet

RLS Room Code

ecl-10-i

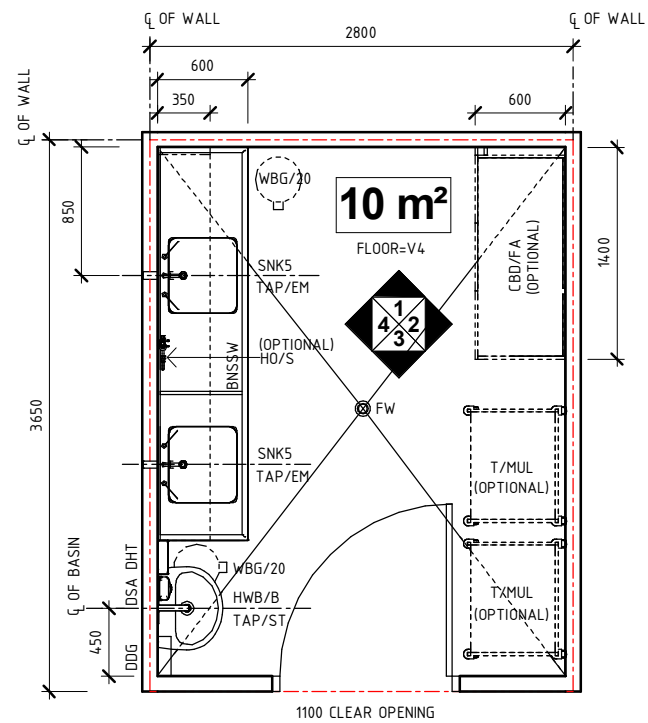
RDS Room Code

ecl-10-i

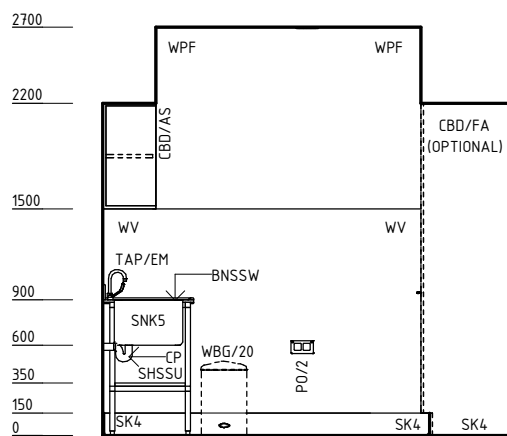
Room Name **Equipment Clean-up, 10m2**

AS	ADJUSTABLE SHELF
BH/PB	BULKHEAD - PLASTERBOARD, PAINT FINISH
BNSSW	BENCH - STAINLESS STEEL, WET EDGE
CBD/AS	CUPBOARD - ADJUSTABLE SHELVES
CBD/FA	CUPBOARD - FULL HEIGHT, ADJUSTABLE SHELVES
CP	CHROME PLATED
DDG	DISPENSER - DISPOSABLE GLOVES
DFP	DOOR AND DOOR FRAME PROTECTION
DHT	DISPENSER - PAPER HAND TOWEL
DSA	DISPENSER - SOAP, ANTISEPTIC
FW	FLOOR WASTE
HO/S	HOSE - SPRAY
HWB/B	HAND WASH BASIN - TYPE 'B'
LS/R	LIGHT SWITCH - ROOM
OP	OBSERVATION PANEL
PO/2	POWER OUTLET - DOUBLE
SG	SAFETY GLASS
SHSSU	SHELF - STAINLESS STEEL, UNDER BENCH
SK4	FLOOR VINYL COVED SKIRTING
SNK5	SINK - 500x450x300D
T/MUL	TROLLEY - MULTIPURPOSE
TAP/EM	TAPWARE - ELBOW MIXER
TAP/ST	TAPWARE - SENSOR TAP
V4	VINYL FLOORING, NON SLIP - SAFETY
WBG/20	WASTE BIN - GENERAL, 20 LITRE
WPF	WALL PAINT FINISH
WV	WALL VINYL

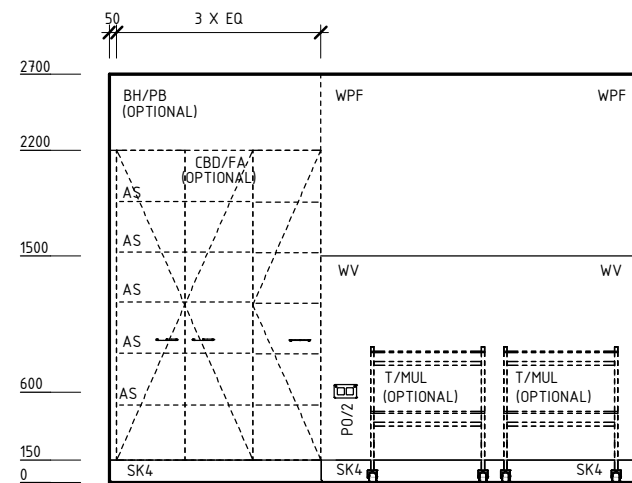
NOTE:
IN CASE TROLLEY IS NOT PROVIDED, EXTEND
THE BENCH TO THE OPPOSITE WALL.



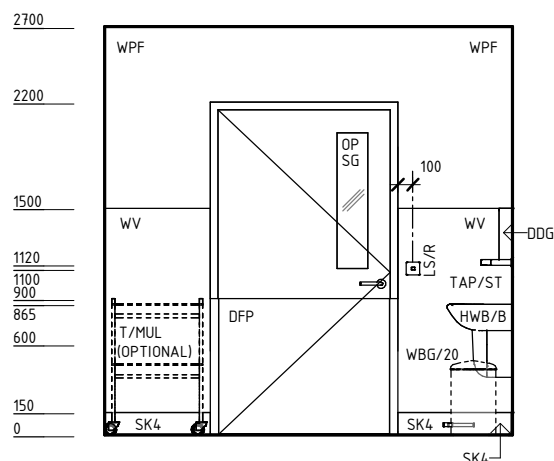
PLAN



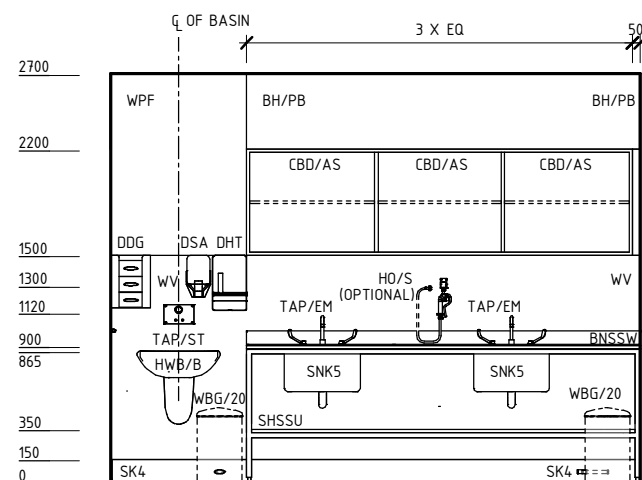
ELEVATION 1



ELEVATION 2



ELEVATION 3



ELEVATION 4

REV	DESCRIPTION	DATE	BY	REV	DESCRIPTION	DATE	BY	COMPATIBILITY
1	FIRST ISSUE	24.10.10	CC	4	GENERAL REVISION	31.10.22	RA	iHFG
2	GENERAL REVISION	30.08.11	ASD					
3	GENERAL REVISION	31.10.12	KC					



International Health Facility Guidelines at:
www.healthdesign.com.au/iHFG
Editable version of Standard Components on
Health Facility Briefing System (HFBS) at:
www.healthdesign.com.au@TAHPI



DESIGNED	APPROVED	DATE	SCALE(S)	SHEET
RA	SA	31.10.22	1 : 50	1 OF 2
REVIT FILE NAME		PAPER DRAWING ID		ISSUE
ecl-10-i		ecl-10-i-1		4

iHFG Standard Components

Room Layout Sheet

RLS Room Code

ecl-10-i

RDS Room Code

ecl-10-i

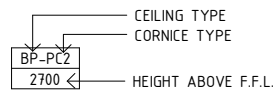
Room Name | **Equipment Clean-up, 10m2**

GENERAL NOTES:

THIS DRAWING TO BE READ IN CONJUNCTION WITH R.D.S. (ROOM DATA SHEETS) WHICH TAKES PRECEDENCE.

ALL SERVICES INDICATED ARE INDICATIVE AND SUBJECTED TO DETAILED PROJECT SPECIFIC ENGINEERING DESIGN.

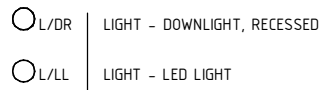
CEILING LEGEND:



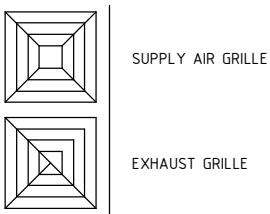
BH/WPB | WATER RESISTANT PLASTERBOARD BULKHEAD, PAINT FINISH
 WPB-PC3 | WATER RESISTANT PLASTERBOARD FLUSH SET CEILING, PAINT FINISH
 PLASTERBOARD SQUARE SET CORNICIE

--- | GRID LINE

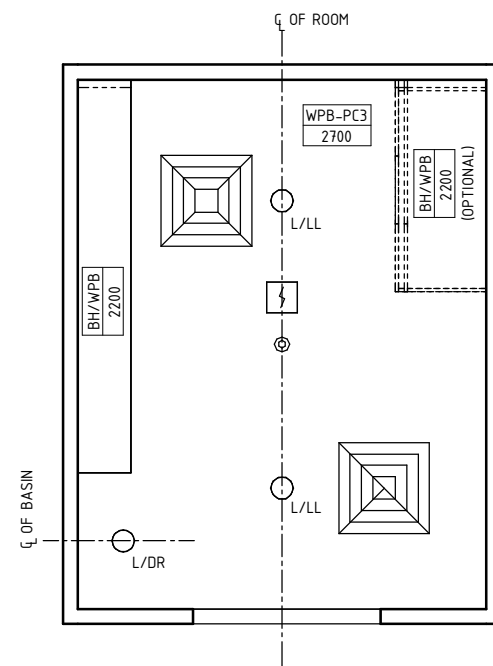
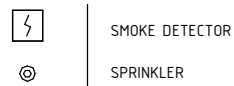
ELECTRICAL LEGEND:



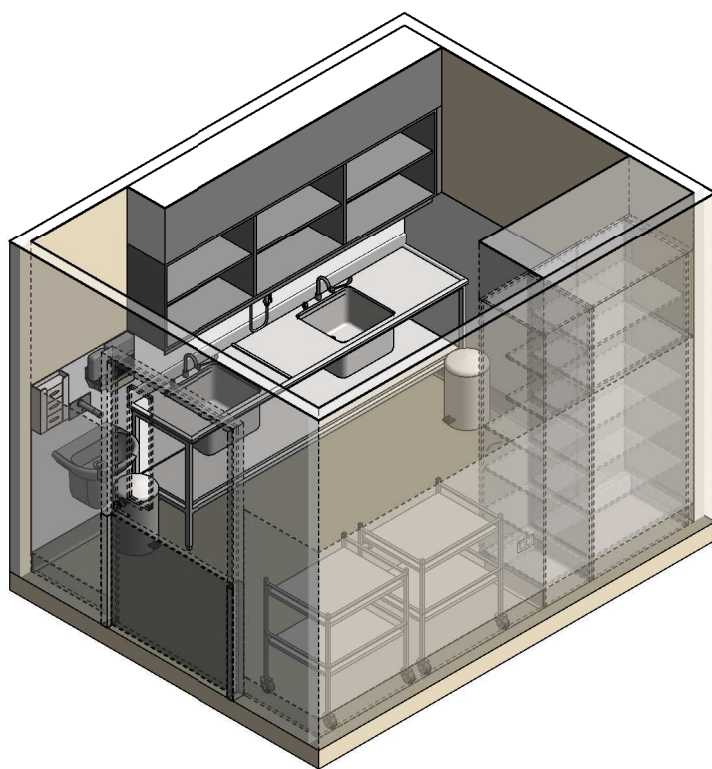
MECHANICAL LEGEND:



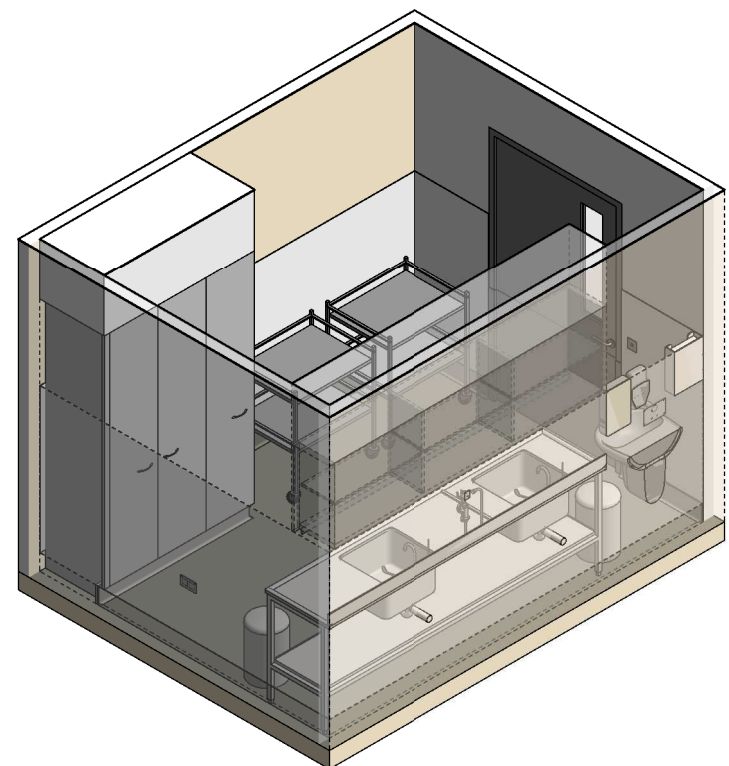
FIRE SERVICES LEGEND:



REFLECTED CEILING PLAN



ISOMETRIC VIEW 1



ISOMETRIC VIEW 2

REV	DESCRIPTION	DATE	BY	REV	DESCRIPTION	DATE	BY	COMPATIBILITY																				
1	FIRST ISSUE	24.10.10	CC	4	GENERAL REVISION	31.10.22	RA																					
2	GENERAL REVISION	30.08.11	ASD																									
3	GENERAL REVISION	31.10.12	KC																									
								<table border="1"> <thead> <tr> <th>DESIGNED</th> <th>APPROVED</th> <th>DATE</th> <th>SCALE(S)</th> <th>SHEET</th> </tr> </thead> <tbody> <tr> <td>RA</td> <td>SA</td> <td>31.10.22</td> <td>1 : 50</td> <td>2 OF 2</td> </tr> <tr> <td colspan="2">REVIT FILE NAME</td> <td colspan="2">PAPER DRAWING ID</td> <td>ISSUE</td> </tr> <tr> <td colspan="2">ecl-10-i</td> <td colspan="2">ecl-10-i-2</td> <td>4</td> </tr> </tbody> </table>	DESIGNED	APPROVED	DATE	SCALE(S)	SHEET	RA	SA	31.10.22	1 : 50	2 OF 2	REVIT FILE NAME		PAPER DRAWING ID		ISSUE	ecl-10-i		ecl-10-i-2		4
DESIGNED	APPROVED	DATE	SCALE(S)	SHEET																								
RA	SA	31.10.22	1 : 50	2 OF 2																								
REVIT FILE NAME		PAPER DRAWING ID		ISSUE																								
ecl-10-i		ecl-10-i-2		4																								