

# iHFG Standard Components

## Room Layout Sheet

RLS Room Code

ecl-le-10-i

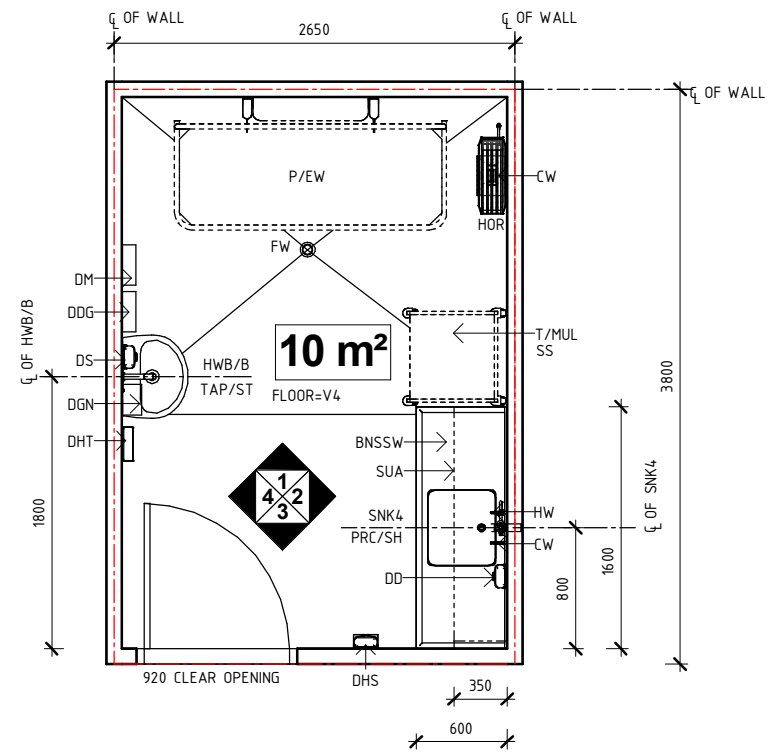
RDS Room Code

ecl-le-10-i

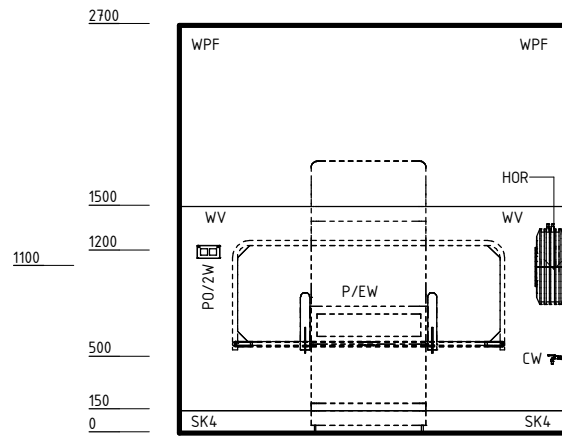
Room Name

Equipment Clean-up, Loan Equipment, 10m2

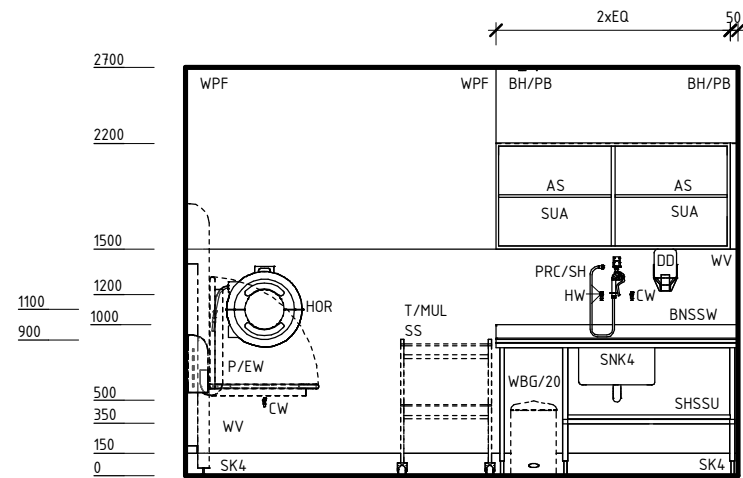
AS	ADJUSTABLE SHELF
BH/PB	BULKHEAD - PLASTERBOARD, PAINT FINISH
BNSW	BENCH - STAINLESS STEEL, WET EDGE
CW	COLD WATER OUTLET
DD	DISPENSER - DETERGENT
DDG	DISPENSER - DISPOSABLE GLOVES
DFP	DOOR AND DOOR FRAME PROTECTION
DGN	DISPENSER - GOWN
DHS	DISPENSER - HAND SANITISER
DHT	DISPENSER - PAPER HAND TOWEL
DM	DISPENSER - MASK
DS	DISPENSER - SOAP
FW	FLOOR WASTE
HOR	HOSE REEL, RETRACTABLE
HW	HOT WATER OUTLET
HWB/B	HAND WASH BASIN - TYPE 'B'
LS/R	LIGHT SWITCH - ROOM
OP	OBSERVATION PANEL
P/EW	PLATFORM - EQUIPMENT WASHING
PO/2W	POWER OUTLET - DOUBLE, WEATHERPROOF
PRC/SH	PRESSURE CONTROL - SPRAY HOSE
SHSSU	SHELF - STAINLESS STEEL, UNDER BENCH
SK4	FLOOR VINYL COVERED SKIRTING
SNK4	SINK - 500x450x250D
SUA	SHELVING UNIT - ADJUSTABLE
T/MUL	TROLLEY - MULTIPURPOSE
TAP/ST	TAPWARE - SENSOR TAP
V4	VINYL FLOORING, NON SLIP - SAFETY
WBG/20	WASTE BIN - GENERAL, 20 LITRE
WPF	WALL PAINT FINISH
WV	WALL VINYL



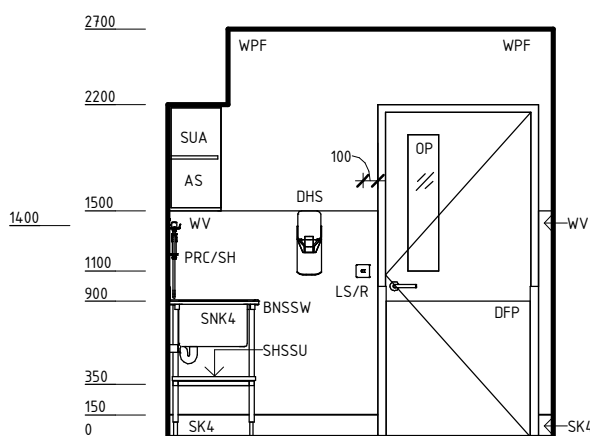
PLAN



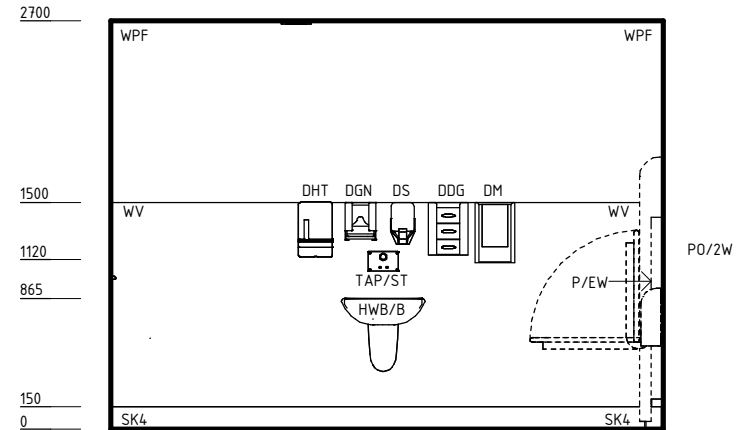
ELEVATION 1



ELEVATION 2



ELEVATION 3



ELEVATION 4

REV	DESCRIPTION	DATE	BY	REV	DESCRIPTION	DATE	BY	COMPATIBILITY
1	FIRST ISSUE	24.10.10	LL	4	GENERAL REVISION	25.05.23	SS	
2	GENERAL REVISION	30.08.11	ASD					
3	GENERAL REVISION	31.10.12	KC					



International Health Facility Guidelines at:  
[www.healthdesign.com.au/iHFG](http://www.healthdesign.com.au/iHFG)  
 Editable version of Standard Components on  
 Health Facility Briefing System (HFBS) at:  
[www.healthdesign.com.au@TAHPI](http://www.healthdesign.com.au@TAHPI)



DESIGNED	APPROVED	DATE	SCALE(S)	SHEET
SS	SA	25.05.23	1 : 50	1 OF 2
REVIT FILE NAME		PAPER DRAWING ID		ISSUE
ecl-le-10-i		ecl-le-10-i-1		4

# iHFG Standard Components

## Room Layout Sheet

RLS Room Code

ecl-le-10-i

RDS Room Code

ecl-le-10-i

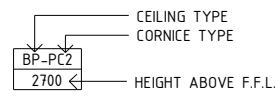
Room Name | **Equipment Clean-up, Loan Equipment, 10m2**

### GENERAL NOTES:

THIS DRAWING TO BE READ IN CONJUNCTION WITH R.D.S. (ROOM DATA SHEETS) WHICH TAKES PRECEDENCE.

ALL SERVICES INDICATED ARE INDICATIVE AND SUBJECT TO DETAILED PROJECT SPECIFIC ENGINEERING DESIGN.

### CEILING LEGEND:



BH/WPB | WATER RESISTANT PLASTERBOARD BULKHEAD, PAINT FINISH  
WPT-PC5 | WATER RESISTANT, DROP IN TILES WITH POWDERCOAT ALUMINIUM CORNICE, FLUSHED AGAINST WALL

--- | GRID LINE  
[Grid Pattern] | TILE CEILING GRID (600 x 600)

### ELECTRICAL LEGEND:

○ L/DR | LIGHT - DOWNLIGHT, RECESSED

[Square with diagonal line] L/LL | LIGHT - LED LIGHT

### MECHANICAL LEGEND:

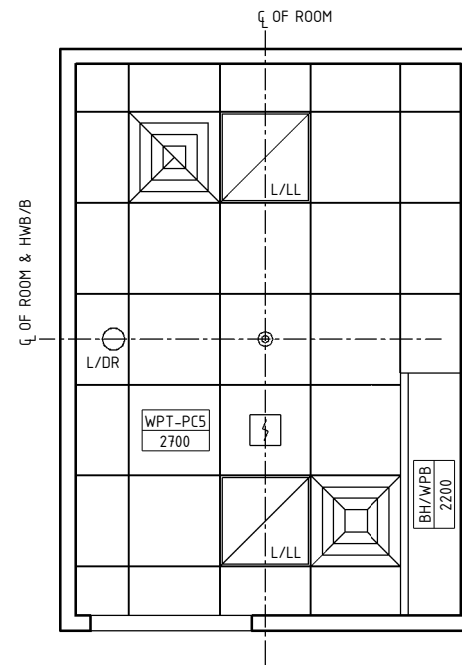
[Square with concentric squares] | SUPPLY AIR GRILLE

[Square with concentric squares and diagonal line] | EXHAUST GRILLE

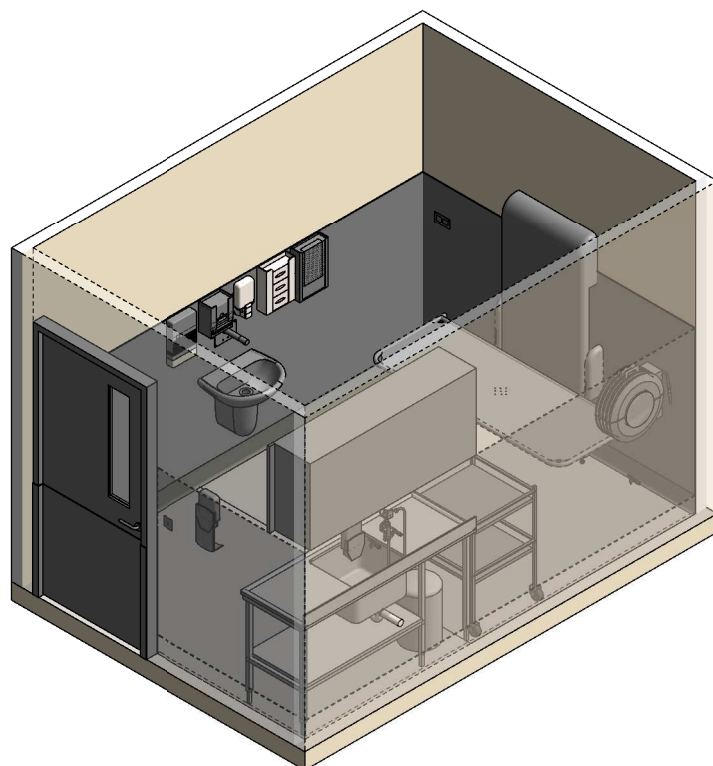
### FIRE SERVICES LEGEND:

[Square with lightning bolt] | SMOKE DETECTOR

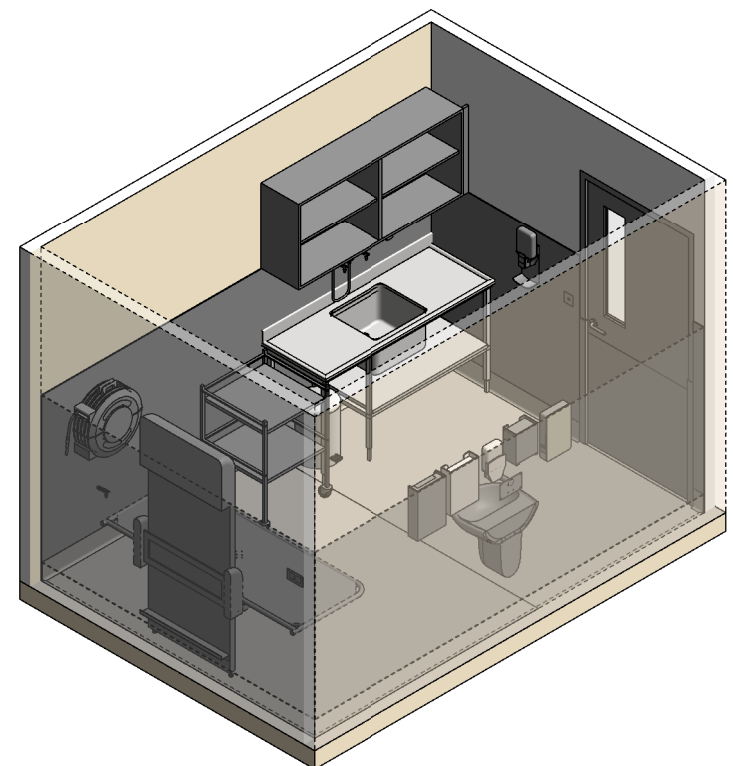
⊙ | SPRINKLER



**REFLECTED CEILING PLAN**



**ISOMETRIC VIEW 01**



**ISOMETRIC VIEW 02**

REV	DESCRIPTION	DATE	BY	REV	DESCRIPTION	DATE	BY	COMPATIBILITY				
1	FIRST ISSUE	24.10.10	LL	4	GENERAL REVISION	25.05.23	SS	iHFG				
2	GENERAL REVISION	30.08.11	ASD									
3	GENERAL REVISION	31.10.12	KC									
								DESIGNED	APPROVED	DATE	SCALE(S)	SHEET
								SS	SA	25.05.23	1 : 50	2 OF 2
								REVIT FILE NAME		PAPER DRAWING ID		ISSUE
								ecl-le-10-i		ecl-le-10-i-2		4