

# iHFG Standard Components

## Room Layout Sheet

RLS Room Code

ecl-le-12-i

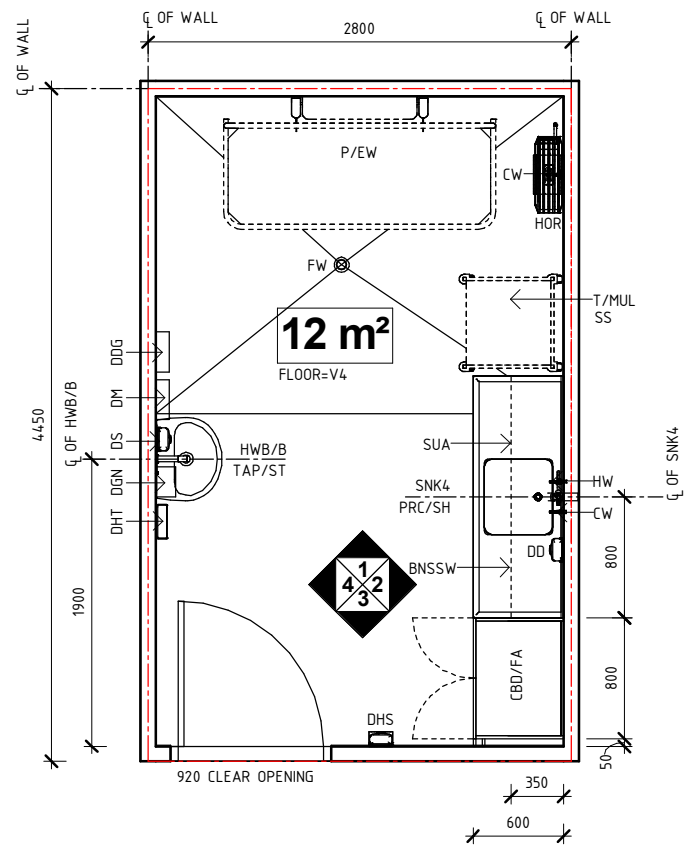
RDS Room Code

ecl-le-12-i

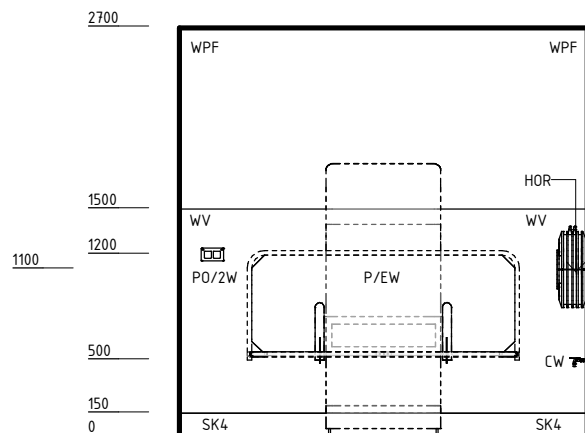
Room Name

Equipment Clean-up, Loan Equipment, 12m2

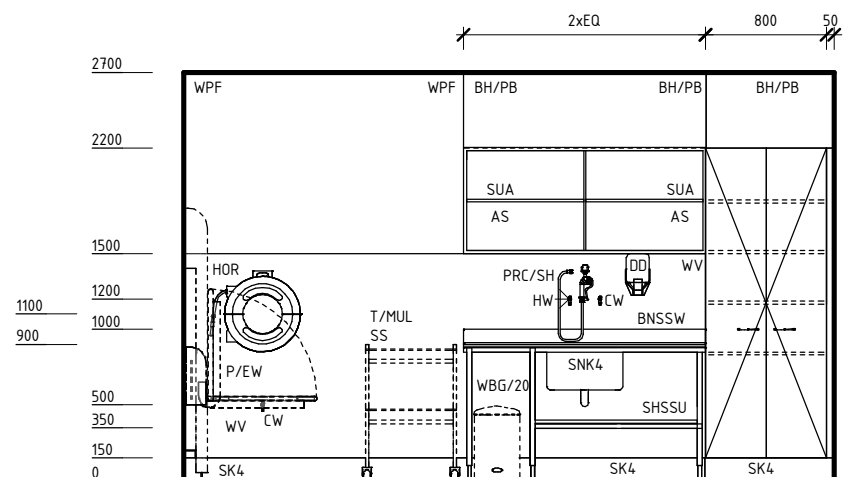
|        |  |
|--------|--|
| AS     | ADJUSTABLE SHELF                           |
| BH/PB  | BULKHEAD - PLASTERBOARD, PAINT FINISH      |
| BNSW   | BENCH - STAINLESS STEEL, WET EDGE          |
| CBD/FA | CUPBOARD - FULL HEIGHT, ADJUSTABLE SHELVES |
| CW     | COLD WATER OUTLET                          |
| DD     | DISPENSER - DETERGENT                      |
| DDG    | DISPENSER - DISPOSABLE GLOVES              |
| DFP    | DOOR AND DOOR FRAME PROTECTION             |
| DGN    | DISPENSER - GOWN                           |
| DHS    | DISPENSER - HAND SANITISER                 |
| DHT    | DISPENSER - PAPER HAND TOWEL               |
| DM     | DISPENSER - MASK                           |
| DS     | DISPENSER - SOAP                           |
| FW     | FLOOR WASTE                                |
| HOR    | HOSE REEL, RETRACTABLE                     |
| HW     | HOT WATER OUTLET                           |
| HWB/B  | HAND WASH BASIN - TYPE 'B'                 |
| LS/R   | LIGHT SWITCH - ROOM                        |
| OP     | OBSERVATION PANEL                          |
| P/EW   | PLATFORM - EQUIPMENT WASHING               |
| PO/2W  | POWER OUTLET - DOUBLE, WEATHERPROOF        |
| PRC/SH | PRESSURE CONTROL - SPRAY HOSE              |
| SHSSU  | SHELF - STAINLESS STEEL, UNDER BENCH       |
| SK4    | FLOOR VINYL COVERED SKIRTING               |
| SNK4   | SINK - 500x450x250D                        |
| SS     | STAINLESS STEEL                            |
| SUA    | SHELVING UNIT - ADJUSTABLE                 |
| T/MUL  | TROLLEY - MULTIPURPOSE                     |
| TAP/ST | TAPWARE - SENSOR TAP                       |
| V4     | VINYL FLOORING, NON SLIP - SAFETY          |
| WBG/20 | WASTE BIN - GENERAL, 20 LITRE              |
| WPF    | WALL PAINT FINISH                          |
| WV     | WALL VINYL                                 |



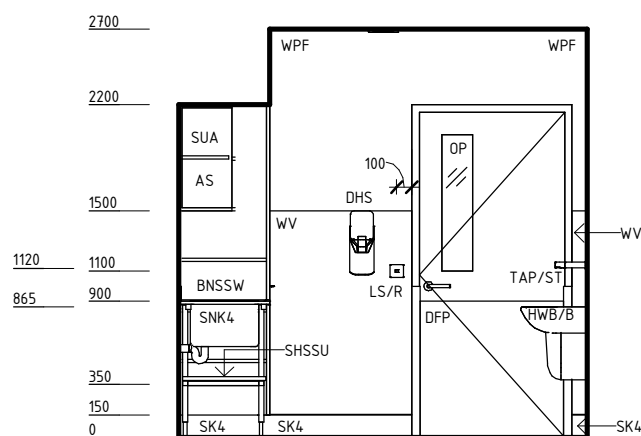
PLAN



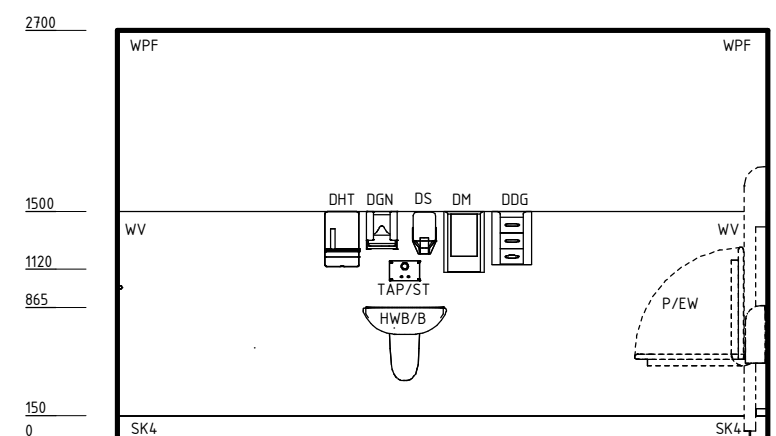
ELEVATION 1



ELEVATION 2



ELEVATION 3



ELEVATION 4

| REV | DESCRIPTION      | DATE     | BY | REV | DESCRIPTION      | DATE     | BY | COMPATIBILITY |
|-----|------------------|----------|----|-----|------------------|----------|----|---------------|
| 1   | FIRST ISSUE      | 24.10.10 | LL | 4   | GENERAL REVISION | 25.05.23 | SS |               |
| 2   | GENERAL REVISION | 30.08.11 | DJ |     |                  |          |    |               |
| 3   | GENERAL REVISION | 31.10.12 | KC |     |                  |          |    |               |

| DESIGNED        | APPROVED | DATE             | SCALE(S) | SHEET  |
|-----------------|----------|------------------|----------|--------|
| SS              | SA       | 25.05.23         | 1 : 50   | 1 OF 2 |
| REVIT FILE NAME |          | PAPER DRAWING ID |          | ISSUE  |
| ecl-le-12-i     |          | ecl-le-12-i-1    |          | 4      |



International Health Facility Guidelines at:  
www.healthdesign.com.au/iHFG  
Editable version of Standard Components on  
Health Facility Briefing System (HFBS) at:  
www.healthdesign.com.au ©TAHPI



# iHFG Standard Components

## Room Layout Sheet

RLS Room Code

ecl-le-12-i

RDS Room Code

ecl-le-12-i

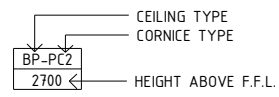
Room Name **Equipment Clean-up, Loan Equipment, 12m2**

### GENERAL NOTES:

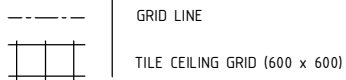
THIS DRAWING TO BE READ IN CONJUNCTION WITH R.D.S. (ROOM DATA SHEETS) WHICH TAKES PRECEDENCE.

ALL SERVICES INDICATED ARE INDICATIVE AND SUBJECT TO DETAILED PROJECT SPECIFIC ENGINEERING DESIGN.

### CEILING LEGEND:

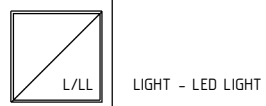


BH/WPB WATER RESISTANT PLASTERBOARD BULKHEAD, PAINT FINISH  
WPT-PC5 WATER RESISTANT, DROP IN TILES WITH POWDERCOAT ALUMINIUM CORNICE, FLUSHED AGAINST WALL



### ELECTRICAL LEGEND:

○/L/DR LIGHT - DOWNLIGHT, RECESSED



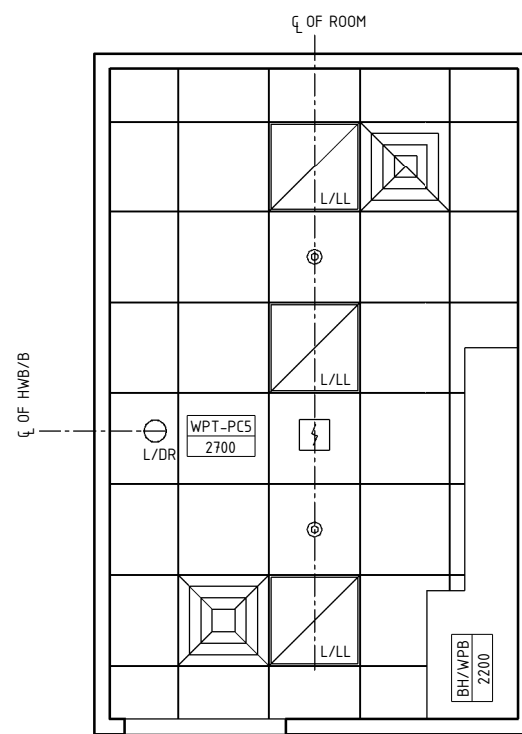
### MECHANICAL LEGEND:



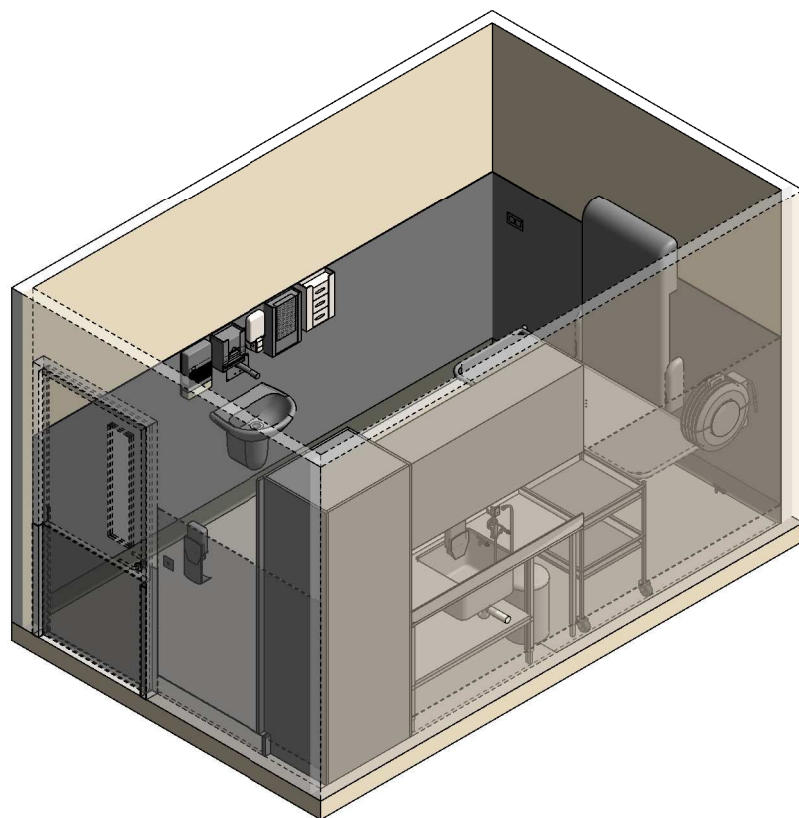
### FIRE SERVICES LEGEND:

⚡ SMOKE DETECTOR

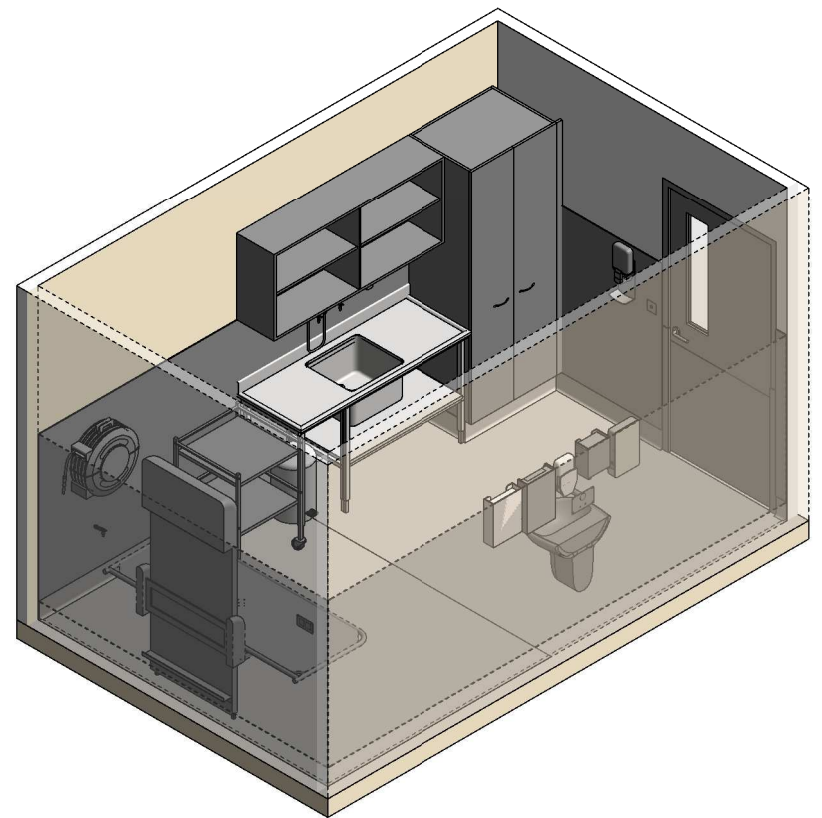
⊙ SPRINKLER



**REFLECTED CEILING PLAN**



**ISOMETRIC VIEW 01**



**ISOMETRIC VIEW 02**

| REV | DESCRIPTION      | DATE     | BY | REV | DESCRIPTION      | DATE     | BY | COMPATIBILITY   |          |                  |          |        |
|-----|------------------|----------|----|-----|------------------|----------|----|-----------------|----------|------------------|----------|--------|
| 1   | FIRST ISSUE      | 24.10.10 | LL | 4   | GENERAL REVISION | 25.05.23 | SS | iHFG            |          |                  |          |        |
| 2   | GENERAL REVISION | 30.08.11 | DJ |     |                  |          |    |                 |          |                  |          |        |
| 3   | GENERAL REVISION | 31.10.12 | KC |     |                  |          |    |                 |          |                  |          |        |
|     |                  |          |    |     |                  |          |    | DESIGNED        | APPROVED | DATE             | SCALE(S) | SHEET  |
|     |                  |          |    |     |                  |          |    | SS              | SA       | 25.05.23         | 1 : 50   | 2 OF 2 |
|     |                  |          |    |     |                  |          |    | REVIT FILE NAME |          | PAPER DRAWING ID |          | ISSUE  |
|     |                  |          |    |     |                  |          |    | ecl-le-12-i     |          | ecl-le-12-i-2    |          | 4      |