

# iHFG Standard Components

## Room Layout Sheet

Room Name **Ensuite - Mental Health**

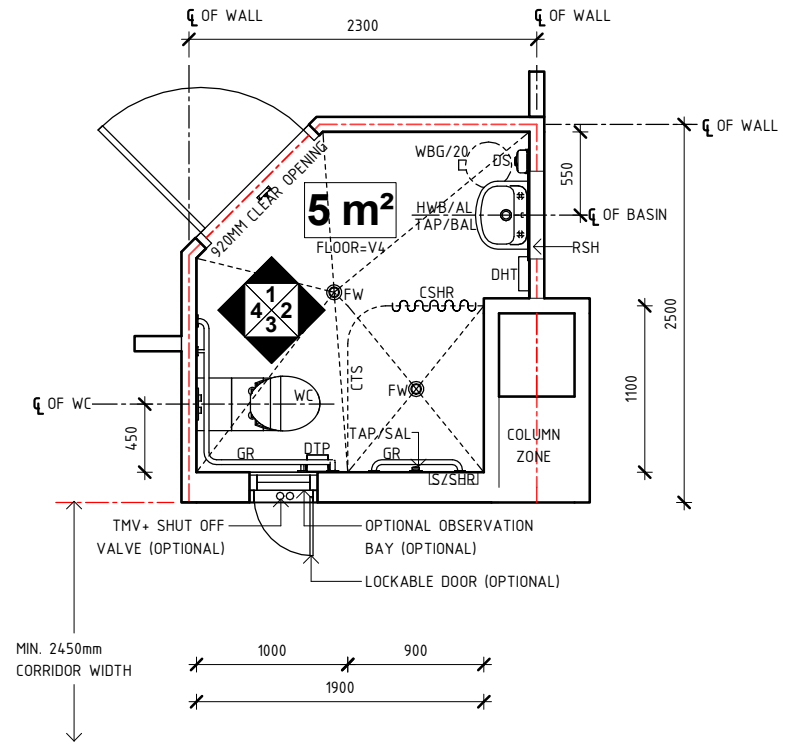
RLS Room Code

ens-mh-i

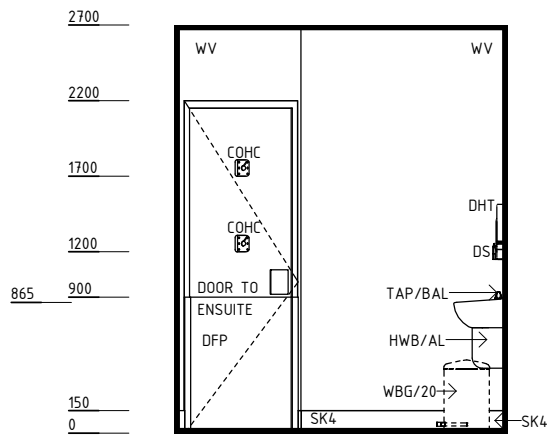
RDS Room Code

ens-mh-i

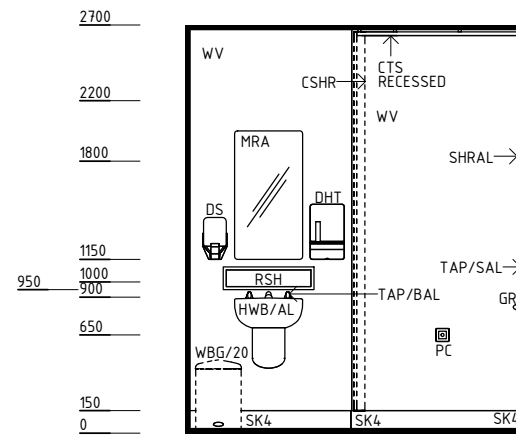
- COHC COAT HOOK - COLLAPSIBLE HANGPROOF
- CSHR CURTAIN - SHOWER
- CTS CURTAIN TRACK - SHOWER
- DFP DOOR AND DOOR FRAME PROTECTION
- DHT DISPENSER - PAPER HAND TOWEL
- DS DISPENSER - SOAP
- DTP DISPENSER - TOILET PAPER
- FW FLOOR WASTE
- GR GRAB RAIL
- HWB/AL HAND WASH BASIN - ANTI-LIGATURE
- MRA MIRROR - ACRYLIC
- PC PATIENT CALL
- RSH RECESSED SHELF
- S/SHR SOAP/ SHAMPOO HOLDER - RECESSED
- SHRAL SHOWER - SHOWER HEAD, ANTI-LIGATURE
- SK4 FLOOR VINYL COVERED SKIRTING
- TAP/BAL TAPWARE - BASIN, ANTI-LIGATURE
- TAP/SAL TAPWARE - SHOWER, ANTI-LIGATURE
- TMV THERMOSTATIC MIXING VALVE
- V4 VINYL FLOORING, NON SLIP - SAFETY
- WBG/20 WASTE BIN - GENERAL, 20 LITRE
- WC WATER CLOSET
- WPF WALL PAINT FINISH
- WV WALL VINYL



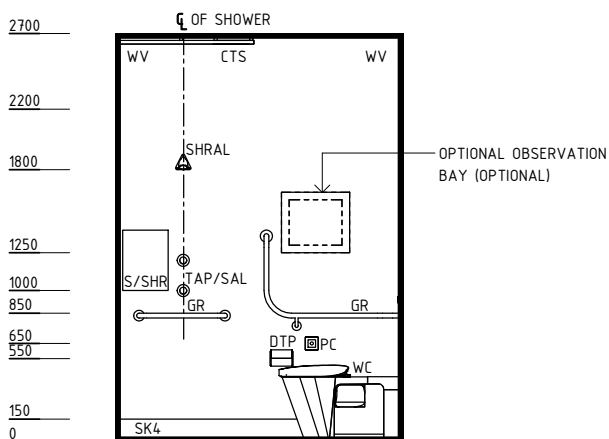
**PLAN**



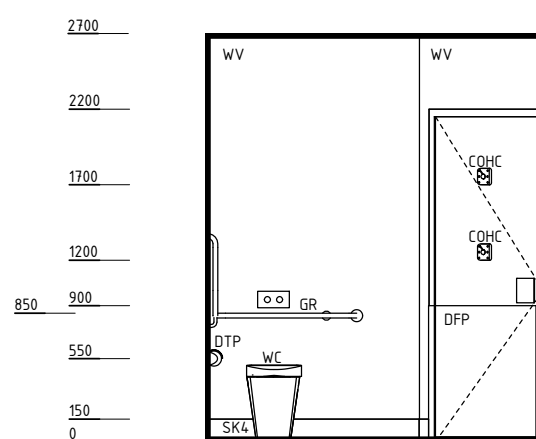
**ELEVATION 1**



**ELEVATION 2**



**ELEVATION 3**



**ELEVATION 4**

REV	DESCRIPTION	DATE	BY	REV	DESCRIPTION	DATE	BY	COMPATIBILITY	
1	FIRST ISSUE	24.10.10	CC	4	GENERAL REVISION	31.08.22	RA		
2	GENERAL REVISION	30.08.11	SK						
3	GENERAL REVISION	31.10.12	KC						
International Health Facility Guidelines International Health Facility Guidelines at: <a href="http://www.healthdesign.com.au/iHFG">www.healthdesign.com.au/iHFG</a> Editable version of Standard Components on Health Facility Briefing System (HFBS) at: <a href="http://www.healthdesign.com.au">www.healthdesign.com.au</a> ©TAHPI									
DESIGNED		APPROVED		DATE		SCALE(S)		SHEET	
RA		RH		31.08.22		1 : 50		1 OF 2	
REVIT FILE NAME				PAPER DRAWING ID				ISSUE	
ens-mh-i				ens-mh-i-1				4	

# iHFG Standard Components

## Room Layout Sheet

RLS Room Code

ens-mh-i

RDS Room Code

ens-mh-i

Room Name

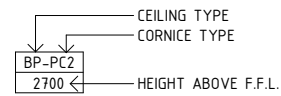
Ensuite - Mental Health

### GENERAL NOTES:

THIS DRAWING TO BE READ IN CONJUNCTION WITH R.D.S. (ROOM DATA SHEETS) WHICH TAKES PRECEDENCE.

ALL SERVICES INDICATED ARE INDICATIVE AND SUBJECTED TO DETAILED PROJECT SPECIFIC ENGINEERING DESIGN.

### CEILING LEGEND:

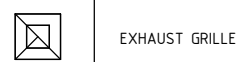


WPB-PC1 | WATER RESISTANT PLASTERBOARD FLUSH SET CEILING, PAINT FINISH WITH PLASTERBOARD CORNICE 90mm  
 - - - | GRID LINE

### ELECTRICAL LEGEND:

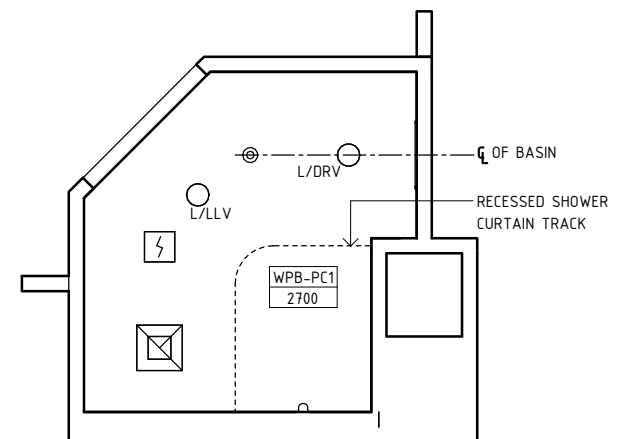
- L/DRV | LIGHT - DOWNLIGHT, RECESSED, VANDAL PROOF
- L/LLV | LIGHT - LED LIGHT, VANDAL PROOF

### MECHANICAL LEGEND:

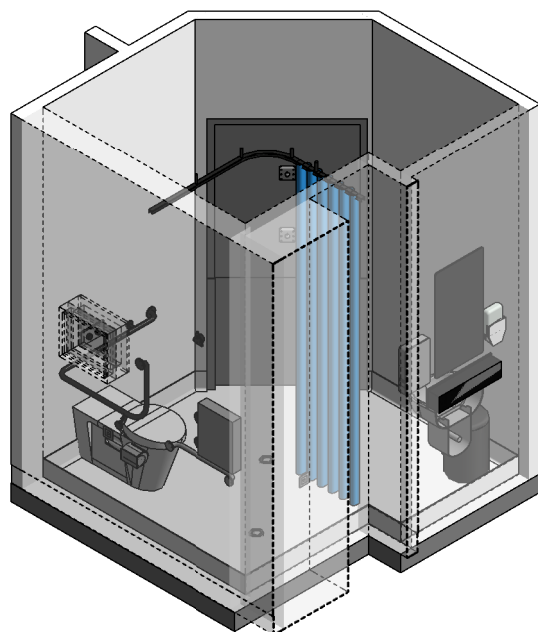


### FIRE SERVICES LEGEND:

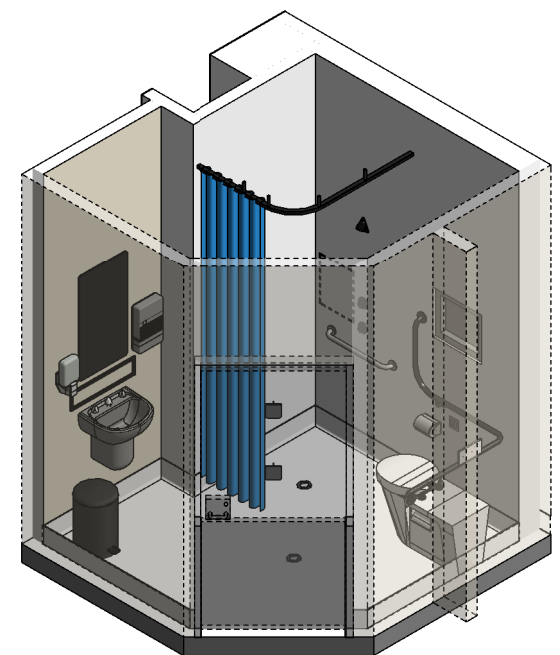
- ⚡ | SMOKE DETECTOR
- ⊙ | SPRINKLER



REFLECTED CEILING PLAN



ISOMETRIC VIEW 01



ISOMETRIC VIEW 02

REV	DESCRIPTION	DATE	BY	REV	DESCRIPTION	DATE	BY	COMPATIBILITY																				
1	FIRST ISSUE	24.10.10	CC	4	GENERAL REVISION	31.08.22	RA	iHFG																				
2	GENERAL REVISION	30.08.11	SK																									
3	GENERAL REVISION	31.10.12	KC																									
<table border="1"> <thead> <tr> <th>DESIGNED</th> <th>APPROVED</th> <th>DATE</th> <th>SCALE(S)</th> <th>SHEET</th> </tr> </thead> <tbody> <tr> <td>RA</td> <td>RH</td> <td>31.08.22</td> <td>1 : 50</td> <td>2 OF 2</td> </tr> <tr> <td colspan="2">REVIT FILE NAME</td> <td colspan="2">PAPER DRAWING ID</td> <td>ISSUE</td> </tr> <tr> <td colspan="2">ens-mh-i</td> <td colspan="2">ens-mh-i-2</td> <td>4</td> </tr> </tbody> </table>								DESIGNED	APPROVED	DATE	SCALE(S)	SHEET	RA	RH	31.08.22	1 : 50	2 OF 2	REVIT FILE NAME		PAPER DRAWING ID		ISSUE	ens-mh-i		ens-mh-i-2		4	
DESIGNED	APPROVED	DATE	SCALE(S)	SHEET																								
RA	RH	31.08.22	1 : 50	2 OF 2																								
REVIT FILE NAME		PAPER DRAWING ID		ISSUE																								
ens-mh-i		ens-mh-i-2		4																								

This document is for advisory purpose only