

iHFG Standard Components

Room Layout Sheet

RLS Room Code

ens-st-a-i

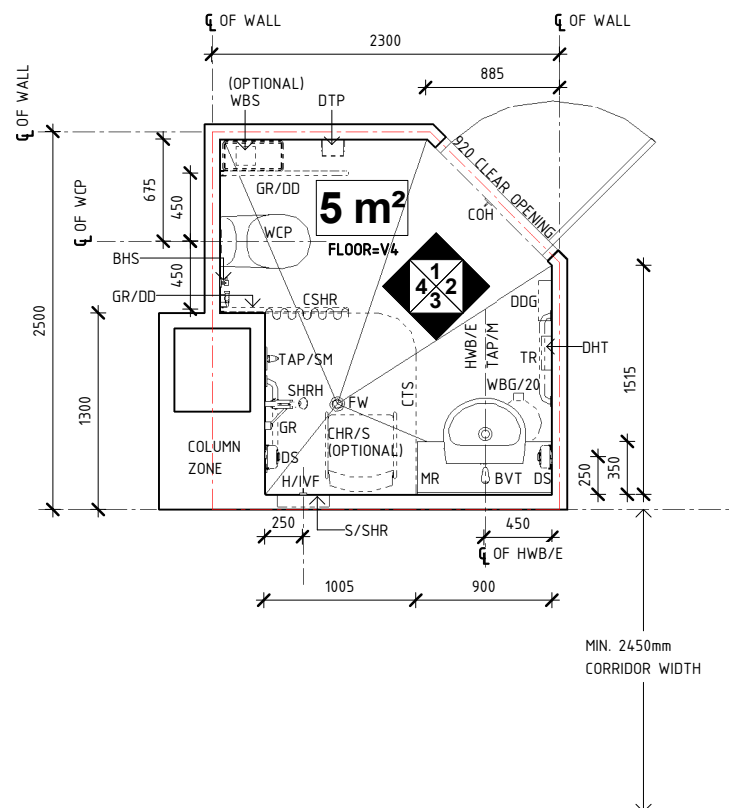
RDS Room Code

ens-st-a-i

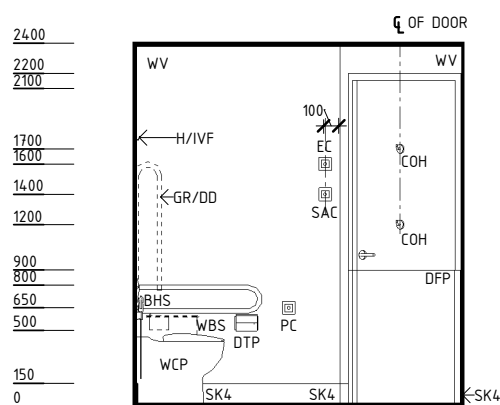
Room Name

Ensuite - Standard - Additional Access

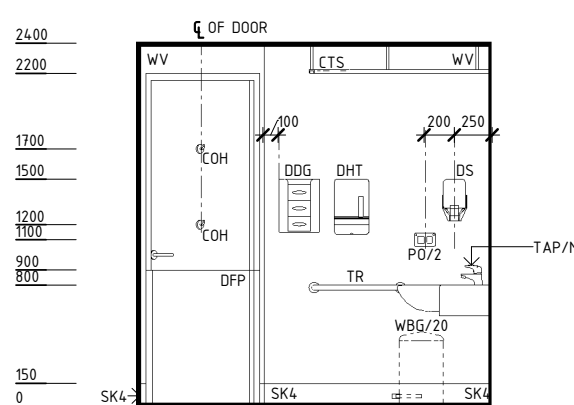
BHS	BIDET HANDSET
BVT	BASIN VANITY TOP
CHR/S	CHAIR - SHOWER
COH	COAT HOOK
CSHR	CURTAIN - SHOWER
CTS	CURTAIN TRACK - SHOWER
DDG	DISPENSER - DISPOSABLE GLOVES
DFB	DUAL FLUSH BUTTON
DFP	DOOR AND DOOR FRAME PROTECTION
DHT	DISPENSER - PAPER HAND TOWEL
DS	DISPENSER - SOAP
DTP	DISPENSER - TOILET PAPER
EC	EMERGENCY CALL
FW	FLOOR WASTE
GR	GRAB RAIL
GR/DD	GRAB RAIL - DROP DOWN
H/IVF	HOOK - FOR IV FLASKS
HWB/E	HAND WASH BASIN - ENSUITE
MR	MIRROR
PC	PATIENT CALL
PO/2	POWER OUTLET - DOUBLE
S/SHR	SOAP/ SHAMPOO HOLDER - RECESSED
SAC	STAFF ASSIST CALL
SHRH	SHOWER - HAND HELD SHOWER HEAD
SK4	FLOOR VINYL COVERED SKIRTING
TAP/M	TAPWARE - MIXER
TAP/SM	TAPWARE - SHOWER MIXER
TR	TOWEL RAIL
V4	VINYL FLOORING, NON SLIP - SAFETY
WBG/20	WASTE BIN - GENERAL, 20 LITRE
WBS	WASTE BIN - SANITARY
WCP	WATER CLOSET - PATIENT
WV	WALL VINYL



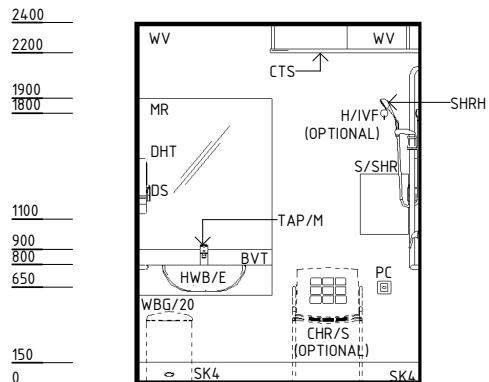
PLAN



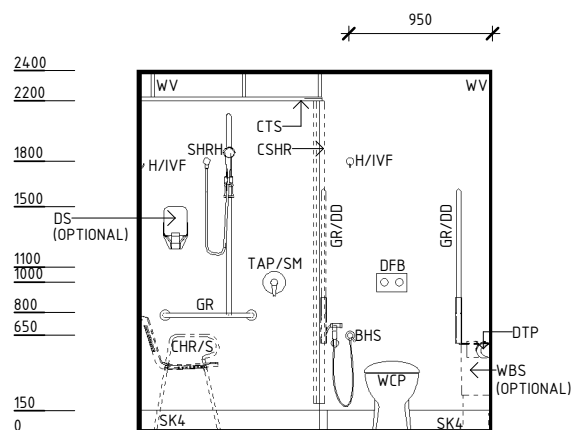
ELEVATION 1



ELEVATION 2



ELEVATION 3



ELEVATION 4

REV	DESCRIPTION	DATE	BY	REV	DESCRIPTION	DATE	BY	COMPATIBILITY
1	FIRST ISSUE	15.10.13	CT	4	GENERAL REVISION	27.01.23	AM	iHFG
2	GENERAL REVISION	02.12.13	CT					
3	GENERAL REVISION	30.03.22	RA					

iHFG Standard Components

Room Layout Sheet

RLS Room Code

ens-st-a-i

RDS Room Code

ens-st-a-i

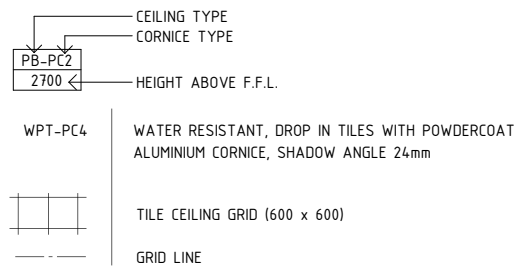
Room Name **Ensuite - Standard - Additional Access**

GENERAL NOTES:

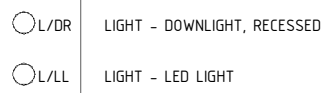
THIS DRAWING TO BE READ IN CONJUNCTION WITH R.D.S. (ROOM DATA SHEETS) WHICH TAKES PRECEDENCE.

ALL SERVICES INDICATED ARE INDICATIVE AND SUBJECT TO DETAILED PROJECT SPECIFIC ENGINEERING DESIGN.

CEILING LEGEND:



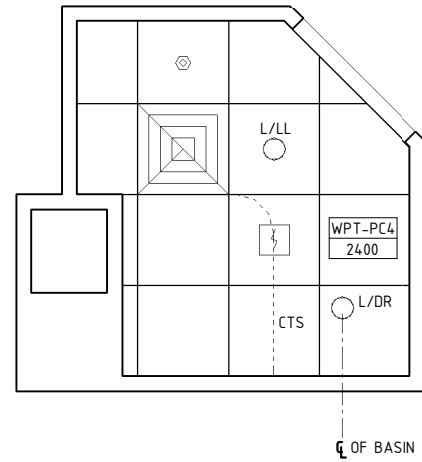
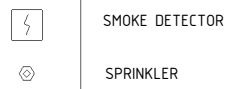
ELECTRICAL LEGEND:



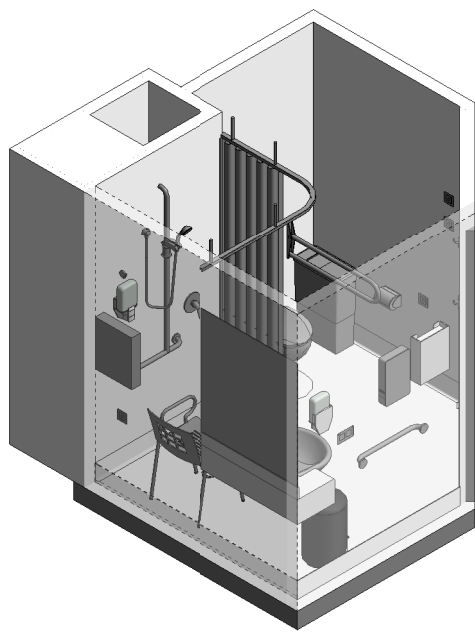
MECHANICAL LEGEND:



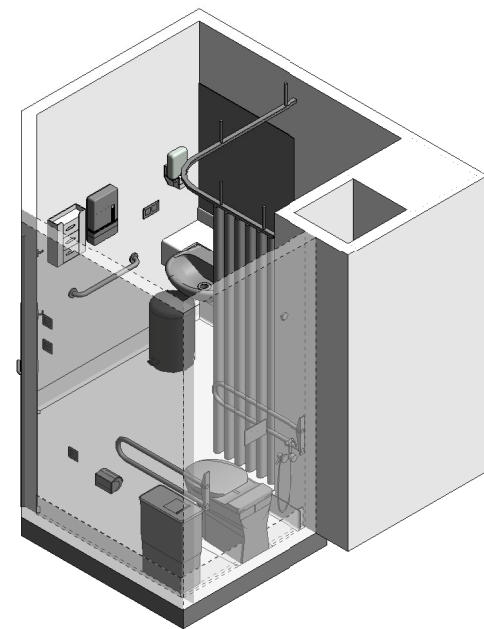
FIRE SERVICES LEGEND:



REFLECTED CEILING PLAN



ISOMETRIC VIEW 01



ISOMETRIC VIEW 02

REV	DESCRIPTION	DATE	BY	REV	DESCRIPTION	DATE	BY	COMPATIBILITY
1	FIRST ISSUE	15.10.13	CT	4	GENERAL REVISION	27.01.23	AM	
2	GENERAL REVISION	02.12.13	CT					
3	GENERAL REVISION	30.03.22	RA					
International Health Facility Guidelines at: www.healthdesign.com.au/iHFG Editable version of Standard Components on Health Facility Briefing System (HFBS) at: www.healthdesign.com.au @TAHPI								
		DESIGNED	APPROVED	DATE	SCALE(S)	SHEET		
		AM	SA	27.01.23	1 : 50	2 OF 2		
		REVIT FILE NAME		PAPER DRAWING ID		ISSUE		
		ens-st-a-i		ens-st-a-i-2		4		