

# iHFG Standard Components

## Room Layout Sheet

RLS Room Code

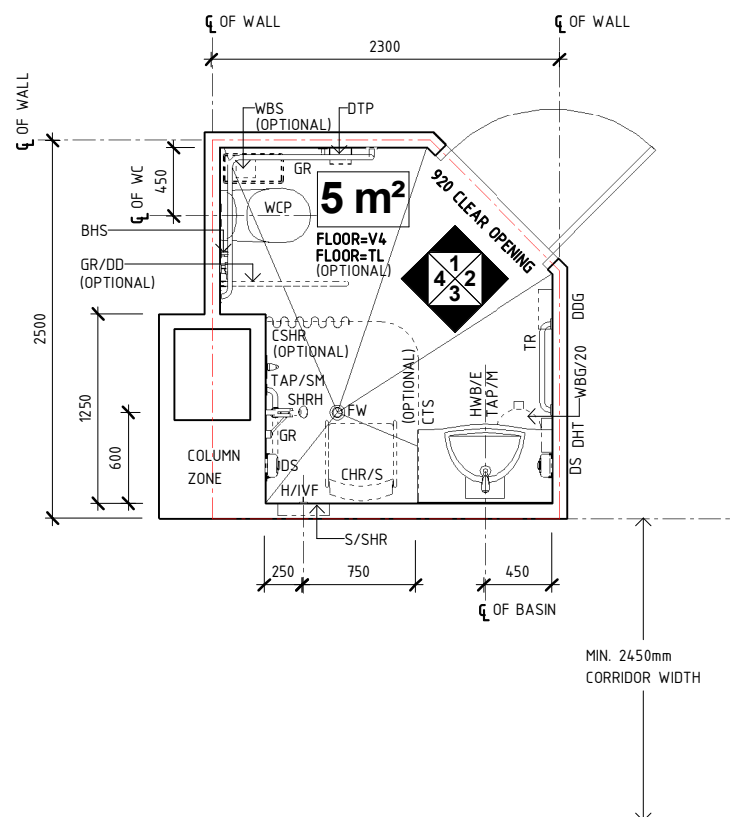
ens-st-i

RDS Room Code

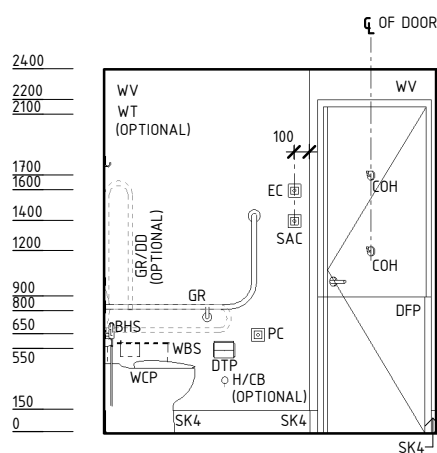
ens-st-i

Room Name **Ensuite - Standard (Inboard)**

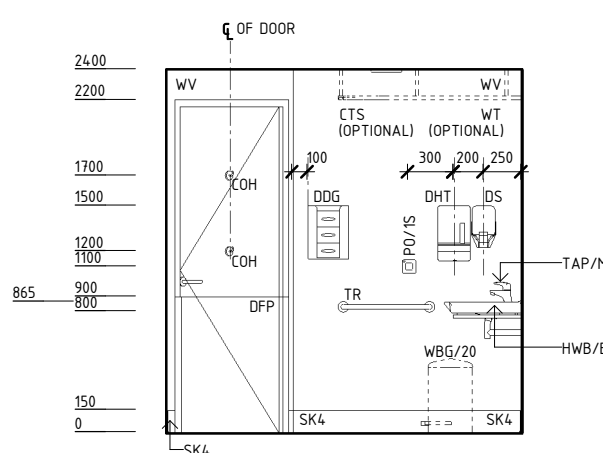
BHS	BIDET HANDSET
CHR/S	CHAIR - SHOWER
COH	COAT HOOK
CSHR	CURTAIN - SHOWER
CTS	CURTAIN TRACK - SHOWER
DDG	DISPENSER - DISPOSABLE GLOVES
DFB	DUAL FLUSH BUTTON
DFP	DOOR AND DOOR FRAME PROTECTION
DHT	DISPENSER - PAPER HAND TOWEL
DS	DISPENSER - SOAP
DTP	DISPENSER - TOILET PAPER
EC	EMERGENCY CALL
FW	FLOOR WASTE
GR	GRAB RAIL
GR/DD	GRAB RAIL - DROP DOWN
H/CB	HOOK - FOR CATHETER BAG
H/IVF	HOOK - FOR IV FLASKS
HWB/E	HAND WASH BASIN - ENSUITE
MR	MIRROR
PC	PATIENT CALL
PO/1S	POWER OUTLET - SPECIAL
S/SHR	SOAP/ SHAMPOO HOLDER - RECESSED
SAC	STAFF ASSIST CALL
SHRH	SHOWER - HAND HELD SHOWER HEAD
SK4	FLOOR VINYL COVERED SKIRTING
TAP/M	TAPWARE - MIXER
TAP/SM	TAPWARE - SHOWER MIXER
TL	TILE FLOORING
TR	TOWEL RAIL
V4	VINYL FLOORING, NON SLIP - SAFETY
WBG/20	WASTE BIN - GENERAL, 20 LITRE
WBS	WASTE BIN - SANITARY
WCP	WATER CLOSET - PATIENT
WT	WALL TILE
WV	WALL VINYL



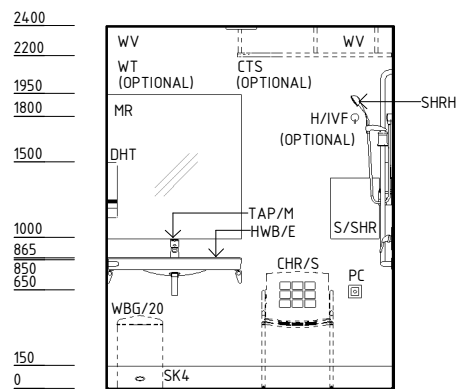
**PLAN**



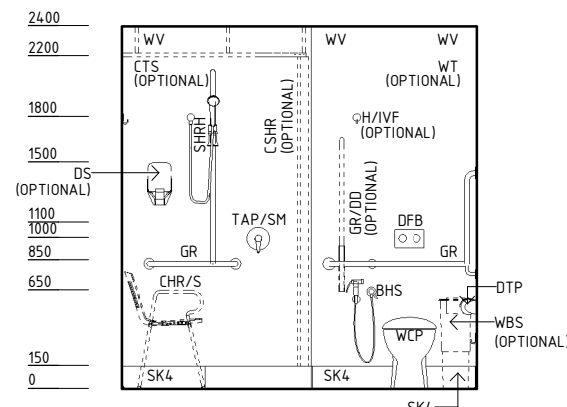
**ELEVATION 1**



**ELEVATION 2**



**ELEVATION 3**



**ELEVATION 4**

REV	DESCRIPTION	DATE	BY	REV	DESCRIPTION	DATE	BY	COMPATIBILITY
1	FIRST ISSUE	15.10.13	CT	4	GENERAL REVISION	26.08.22	CC	
2	GENERAL REVISION	02.12.13	CT					
3	GENERAL REVISION	30.03.22	RA					

<b>International Health Facility Guidelines</b>	International Health Facility Guidelines at: <a href="http://www.healthdesign.com.au/iHFG">www.healthdesign.com.au/iHFG</a> Editable version of Standard Components on Health Facility Briefing System (HFBS) at: <a href="http://www.healthdesign.com.au">www.healthdesign.com.au</a> ©TAHPI		DESIGNED RA	APPROVED CC	DATE 26.08.22	SCALE(S) 1 : 50	SHEET 1 OF 2
	REVIT FILE NAME ens-st-i		PAPER DRAWING ID ens-st-i-1		ISSUE 4		

This document is for advisory purpose only

# iHFG Standard Components

## Room Layout Sheet

RLS Room Code

ens-st-i

RDS Room Code

ens-st-i

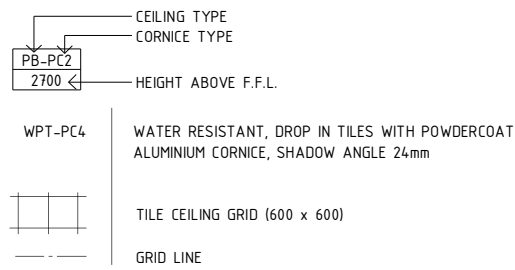
Room Name | **Ensuite - Standard (Inboard)**

### GENERAL NOTES:

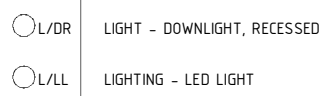
THIS DRAWING TO BE READ IN CONJUNCTION WITH R.D.S. (ROOM DATA SHEETS) WHICH TAKES PRECEDENCE.

ALL SERVICES INDICATED ARE INDICATIVE AND SUBJECT TO DETAILED PROJECT SPECIFIC ENGINEERING DESIGN.

### CEILING LEGEND:



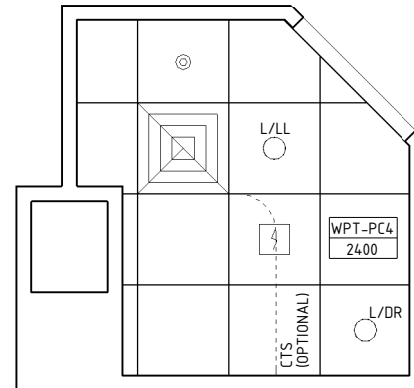
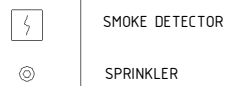
### ELECTRICAL LEGEND:



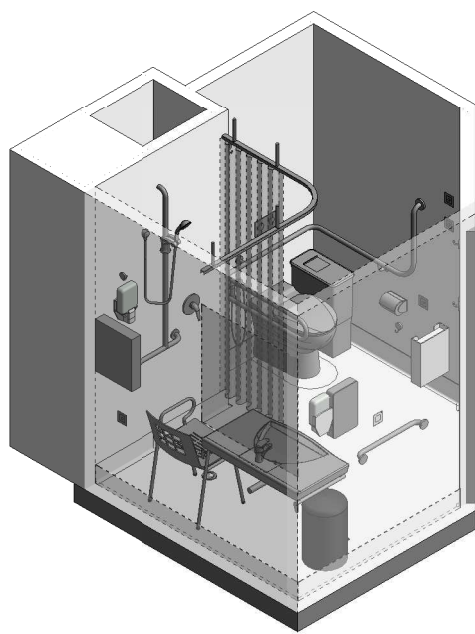
### MECHANICAL LEGEND:



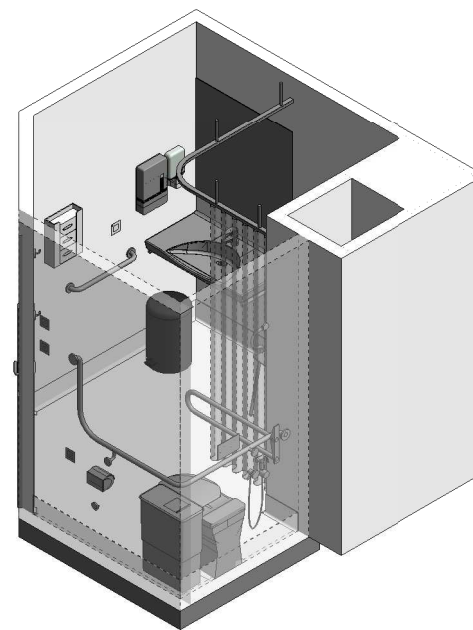
### FIRE SERVICES LEGEND:



**REFLECTED CEILING PLAN**



**ISOMETRIC VIEW 1**



**ISOMETRIC VIEW 2**

REV	DESCRIPTION	DATE	BY	REV	DESCRIPTION	DATE	BY	COMPATIBILITY																				
1	FIRST ISSUE	15.10.13	CT	4	GENERAL REVISION	26.08.22	CC																					
2	GENERAL REVISION	02.12.13	CT																									
3	GENERAL REVISION	30.03.22	RA																									
International Health Facility Guidelines International Health Facility Guidelines at: www.healthdesign.com.au/iHFG Editable version of Standard Components on Health Facility Briefing System (HFBS) at: www.healthdesign.com.au ©TAHPI								<table border="1"> <tr> <th>DESIGNED</th> <th>APPROVED</th> <th>DATE</th> <th>SCALE(S)</th> <th>SHEET</th> </tr> <tr> <td>RA</td> <td>CC</td> <td>26.08.22</td> <td>1 : 50</td> <td>2 OF 2</td> </tr> <tr> <th colspan="2">REVIT FILE NAME</th> <th>PAPER DRAWING ID</th> <th colspan="2">ISSUE</th> </tr> <tr> <td colspan="2">ens-st-i</td> <td>ens-st-i-2</td> <td colspan="2">4</td> </tr> </table>	DESIGNED	APPROVED	DATE	SCALE(S)	SHEET	RA	CC	26.08.22	1 : 50	2 OF 2	REVIT FILE NAME		PAPER DRAWING ID	ISSUE		ens-st-i		ens-st-i-2	4	
DESIGNED	APPROVED	DATE	SCALE(S)	SHEET																								
RA	CC	26.08.22	1 : 50	2 OF 2																								
REVIT FILE NAME		PAPER DRAWING ID	ISSUE																									
ens-st-i		ens-st-i-2	4																									

This document is for advisory purpose only