

iHFG Standard Components

Room Layout Sheet

Room Name Examination/ Assessment Room - Birthing

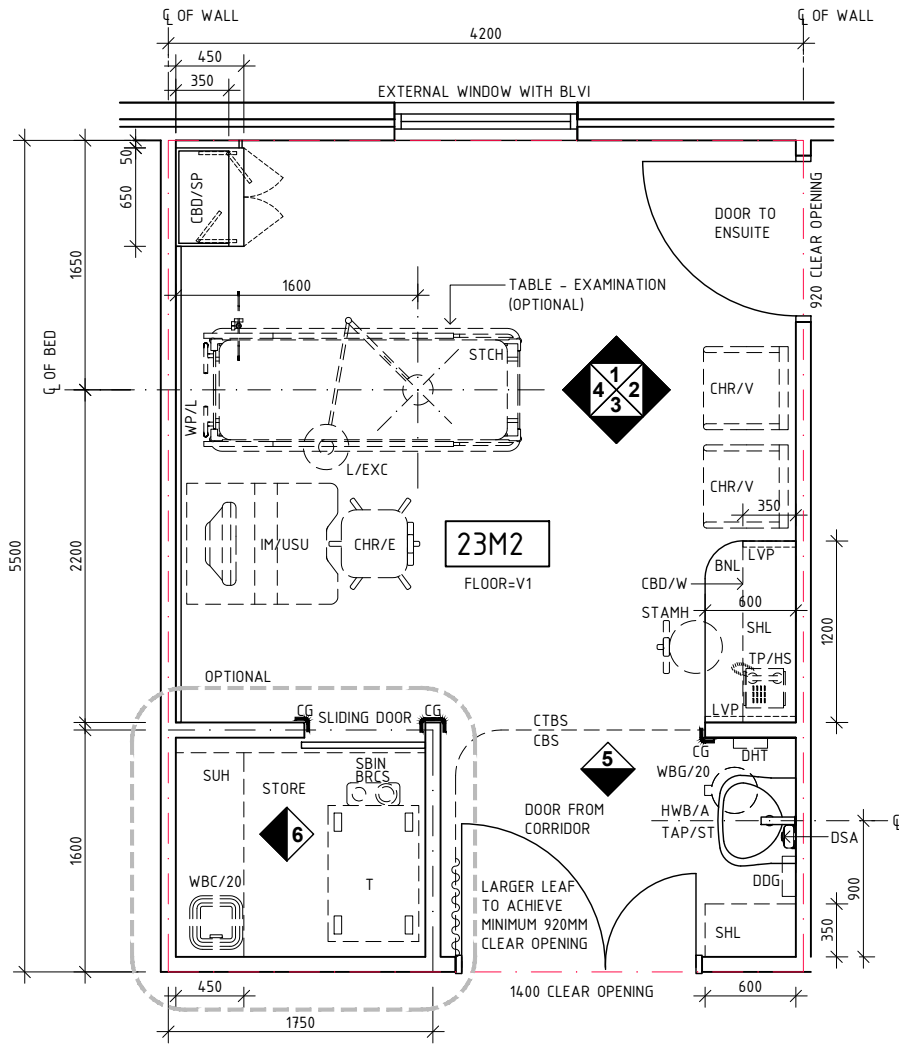
RLS Room Code

exas-b-i

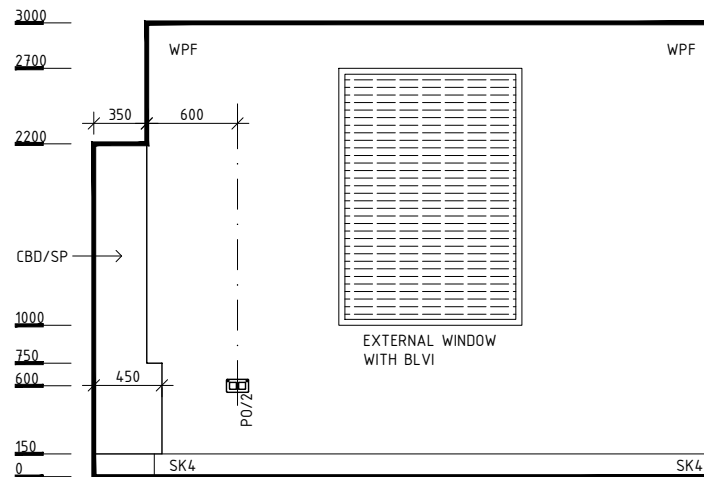
RDS Room Code

exas-b-i

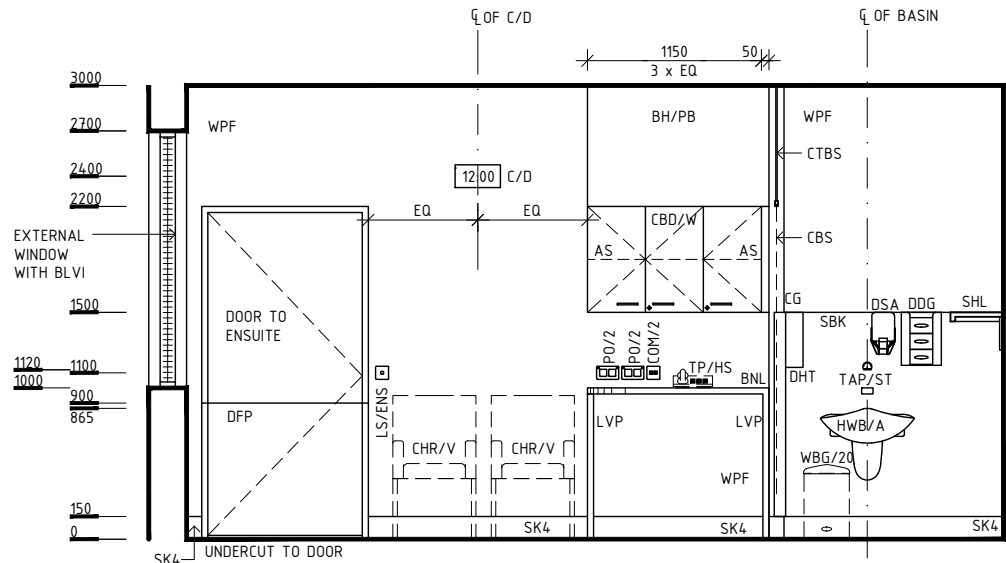
- AS ADJUSTABLE SHELF
- BDP BODY PROTECTED
- BH/PB BULKHEAD - PLASTERBOARD, PAINT FINISH
- BLVI BLIND - VENETIAN, INTEGRAL
- BNL BENCH - LAMINATE
- BRCS BRACKET - SHARPS
- BRCSB BRACKET - SUCTION BOTTLE
- C/D CLOCK - DIGITAL, ELECTRIC
- CBD/D CUPBOARD - DRAWER UNIT
- CBD/SP CUPBOARD - SPECIAL
- CBD/W CUPBOARD - WALL MOUNTED
- CBS CURTAIN - BED SCREEN
- CG CORNER GUARD
- CHR/VP CHAIR - VISITOR, PATIENT
- COM/2 COMMUNICATION OUTLET - DOUBLE
- CTBS CURTAIN TRACK - BED SCREEN
- DDG DISPENSER - DISPOSABLE GLOVES
- DFP DOOR AND DOOR FRAME PROTECTION
- DHT DISPENSER - HAND TOWEL
- DSA DISPENSER - SOAP ANTISEPTIC
- EC EMERGENCY CALL
- FS FIXED SHELF
- HWB/A HAND WASH BASIN - TYPE 'A'
- IM/USU IMAGING - ULTRASOUND SCANNING UNIT
- L/EXC LIGHT - EXAMINATION, CEILING MOUNTED
- LS/DD LIGHT SWITCH - DOWNLIGHTS, DIMMABLE
- LS/ENS LIGHT SWITCH - ENSUITE
- LS/R LIGHT SWITCH - ROOM
- LVP LAMINATE VERTICAL SUPPORT PANEL
- MON/CTG MONITOR - CARDIOTOGRAPHY, FOETAL
- MSP MEDICAL SERVICE PANEL
- O2 OXYGEN
- PC PATIENT CALL
- PCH PATIENT CALL HANDSET
- PO/1 POWER OUTLET - SINGLE
- PO/1E POWER OUTLET - EMERGENCY, SINGLE
- PO/2 POWER OUTLET - DOUBLE
- PO/C POWER OUTLET - CLEANER'S
- STCH STRETCHER
- S SUCTION
- SAC STAFF ASSIST CALL
- SB SUCTION BOTTLE
- SBIN SHARPS BIN
- SBK SPLASHBACK
- SHL SHELF - LAMINATED
- SHMO SHELF - MONITOR
- SK4 FLOOR VINYL COVED SKIRTING
- SUH SHELVING UNIT - HEAVY DUTY
- STAMH STOOL - ADJUSTING, MOBILE, HIGH
- T TROLLEY
- TAPWARE TAPWARE - SENSOR TAP
- TP/HS TELEPHONE - HANDSET, STANDARD
- V1 VINYL FLOORING, STANDARD SLIP RESISTANT
- WBC/20 WASTE BIN - CLINICAL, 20 LITRE
- WBG/20 WASTE BIN - GENERAL, 20 LITRE
- WP/L WALL PANEL, LAMINATE
- WPF WALL PAINT FINISH



PLAN



ELEVATION 1



ELEVATION 2

REV	DESCRIPTION	DATE	BY	REV	DESCRIPTION	DATE	BY	COMPATIBILITY																				
1	FIRST ISSUE	30.09.22	BK					iHFG																				
								<table border="1"> <thead> <tr> <th>DESIGNED</th> <th>APPROVED</th> <th>DATE</th> <th>SCALE(S)</th> <th>SHEET</th> </tr> </thead> <tbody> <tr> <td>BK</td> <td>CC/MM</td> <td>30.09.22</td> <td>1:50 in A3</td> <td>1 OF 3</td> </tr> <tr> <td colspan="2">CAD FILE NAME</td> <td colspan="2">PAPER DRAWING ID</td> <td>ISSUE</td> </tr> <tr> <td colspan="2">exas-b-i</td> <td colspan="2">exas-b-i-1</td> <td>1</td> </tr> </tbody> </table>	DESIGNED	APPROVED	DATE	SCALE(S)	SHEET	BK	CC/MM	30.09.22	1:50 in A3	1 OF 3	CAD FILE NAME		PAPER DRAWING ID		ISSUE	exas-b-i		exas-b-i-1		1
DESIGNED	APPROVED	DATE	SCALE(S)	SHEET																								
BK	CC/MM	30.09.22	1:50 in A3	1 OF 3																								
CAD FILE NAME		PAPER DRAWING ID		ISSUE																								
exas-b-i		exas-b-i-1		1																								

iHFG Standard Components

Room Layout Sheet

Room Name **Examination/ Assessment Room - Birthing**

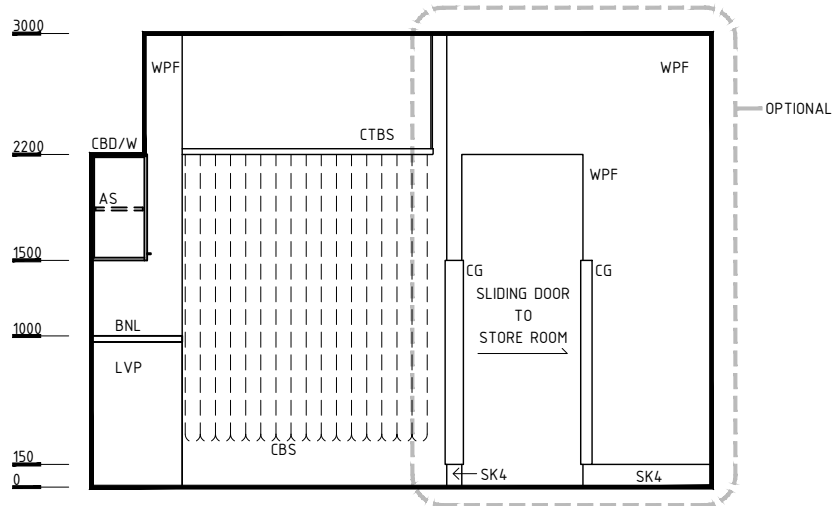
RLS Room Code

exas-b-i

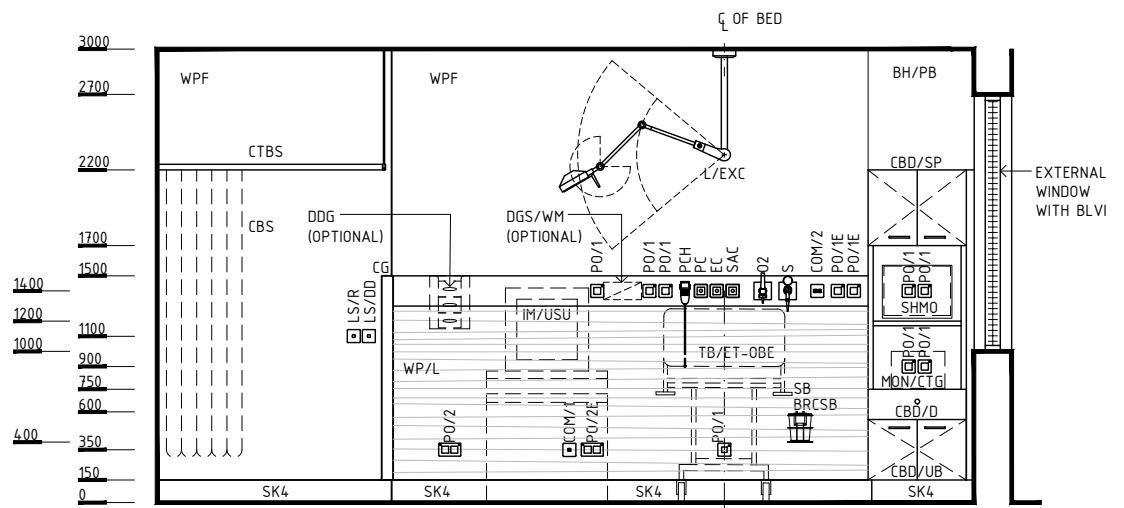
RDS Room Code

exas-b-i

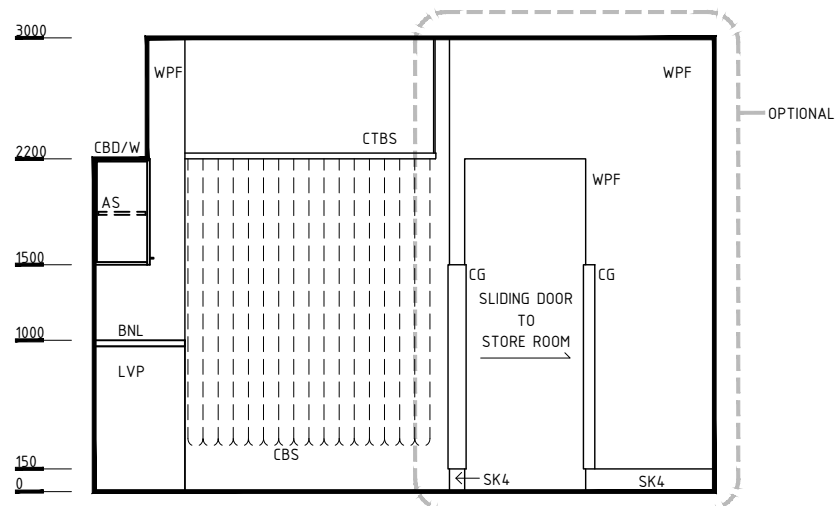
AS	ADJUSTABLE SHELF
BDP	BODY PROTECTED
BH/PB	BULKHEAD - PLASTERBOARD, PAINT FINISH
BLVI	BLIND - VENETIAN, INTEGRAL
BNL	BENCH - LAMINATE
BRCSB	BRACKET - SUCTION BOTTLE
C/D	CLOCK - DIGITAL, ELECTRIC
CBD/D	CUPBOARD - DRAWER UNIT
CBD/SP	CUPBOARD - SPECIAL
CBD/W	CUPBOARD - WALL MOUNTED
CBS	CURTAIN - BED SCREEN
CG	CORNER GUARD
CHR/VP	CHAIR - VISITOR, PATIENT
COM/2	COMMUNICATION OUTLET - DOUBLE
CTBS	CURTAIN TRACK - BED SCREEN
DDG	DISPENSER - DISPOSABLE GLOVES
DPF	DOOR AND DOOR FRAME PROTECTION
DHT	DISPENSER - HAND TOWEL
DSA	DISPENSER - SOAP ANTISEPTIC
EC	EMERGENCY CALL
FS	FIXED SHELF
HWB/A	HAND WASH BASIN - TYPE 'A'
IM/USU	IMAGING - ULTRASOUND SCANNING UNIT
L/EXC	LIGHT - EXAMINATION, CEILING MOUNTED
LS/DD	LIGHT SWITCH - DOWNLIGHTS, DIMMABLE
LS/ENS	LIGHT SWITCH - ENSUITE
LS/R	LIGHT SWITCH - ROOM
LVP	LAMINATE VERTICAL SUPPORT PANEL
MON/CTG	MONITOR - CARDIOTOCOGRAPHY, FOETAL
MSP	MEDICAL SERVICE PANEL
O2	OXYGEN
PC	PATIENT CALL
PCH	PATIENT CALL HANDSET
PO/1	POWER OUTLET - SINGLE
PO/1E	POWER OUTLET - EMERGENCY, SINGLE
PO/2	POWER OUTLET - DOUBLE
PO/C	POWER OUTLET - CLEANER'S
S	SUCTION
SAC	STAFF ASSIST CALL
SB	SUCTION BOTTLE
SBIN	SHARPS BIN
SBK	SPLASHBACK
SHL	SHELF - LAMINATED
SHMO	SHELF - MONITOR
SK4	FLOOR VINYL COVERED SKIRTING
SUH	SHELVING UNIT - HEAVY DUTY
STAMH	STOOL - ADJUSTING, MOBILE, HIGH
T	TROLLEY
TAP/ST	TAPWARE - SENSOR TAP
TB/ET-OBE	TABLE - EXAMINATION/ TREATMENT, OBSTETRIC, ELECTRIC
TP/HS	TELEPHONE - HANDSET, STANDARD
V1	VINYL FLOORING, STANDARD SLIP RESISTANT
WBC/20	WASTE BIN - CLINICAL, 20 LITRE
WBG/20	WASTE BIN - GENERAL, 20 LITRE
WP/L	WALL PANEL, LAMINATE
WPF	WALL PAINT FINISH



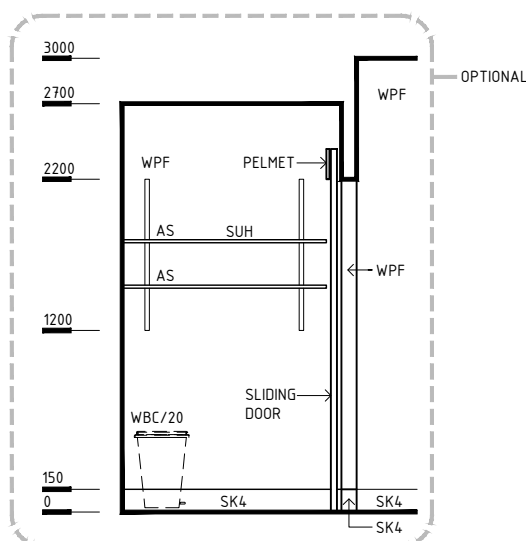
ELEVATION 3



ELEVATION 4



ELEVATION 5



ELEVATION 6

REV	DESCRIPTION	DATE	BY	REV	DESCRIPTION	DATE	BY	COMPATIBILITY		
1	FIRST ISSUE	30.09.22	BK							
								iHFG		
iHFG International Health Facility Guidelines		International Health Facility Guidelines at: www.healthdesign.com.au/iHFG				DESIGNED	APPROVED	DATE	SCALE(S)	SHEET
		Health Facility Briefing System (HFBS) at: www.healthdesign.com.au ©TAHPI				BK	CC/MM	30.09.22	1:50 in A3	2 OF 3
						CAD FILE NAME	PAPER DRAWING ID		ISSUE	
						exas-b-i	exas-b-i-2		1	

This document is for advisory purpose only

iHFG Standard Components

Room Layout Sheet

Room Name **Examination/ Assessment Room - Birthing**

RLS Room Code

exas-b-i

RDS Room Code

exas-b-i

GENERAL NOTES:

THIS DRAWING TO BE READ IN CONJUNCTION WITH R.D.S. (ROOM DATA SHEETS) WHICH TAKES PRECEDENCE.

ALL SERVICES INDICATED ARE INDICATIVE AND SUBJECTED TO DETAILED PROJECT SPECIFIC ENGINEERING DESIGN.

CEILING LEGEND:

BH/PB BULKHEAD - PLASTERBOARD, PAINT FINISH
 PB PLASTERBOARD FLUSH SET CEILING, PAINTED
 - - - - - GRID LINE

CEILING TYPE
 HEIGHT ABOVE F.F.L.

ELECTRICAL LEGEND:

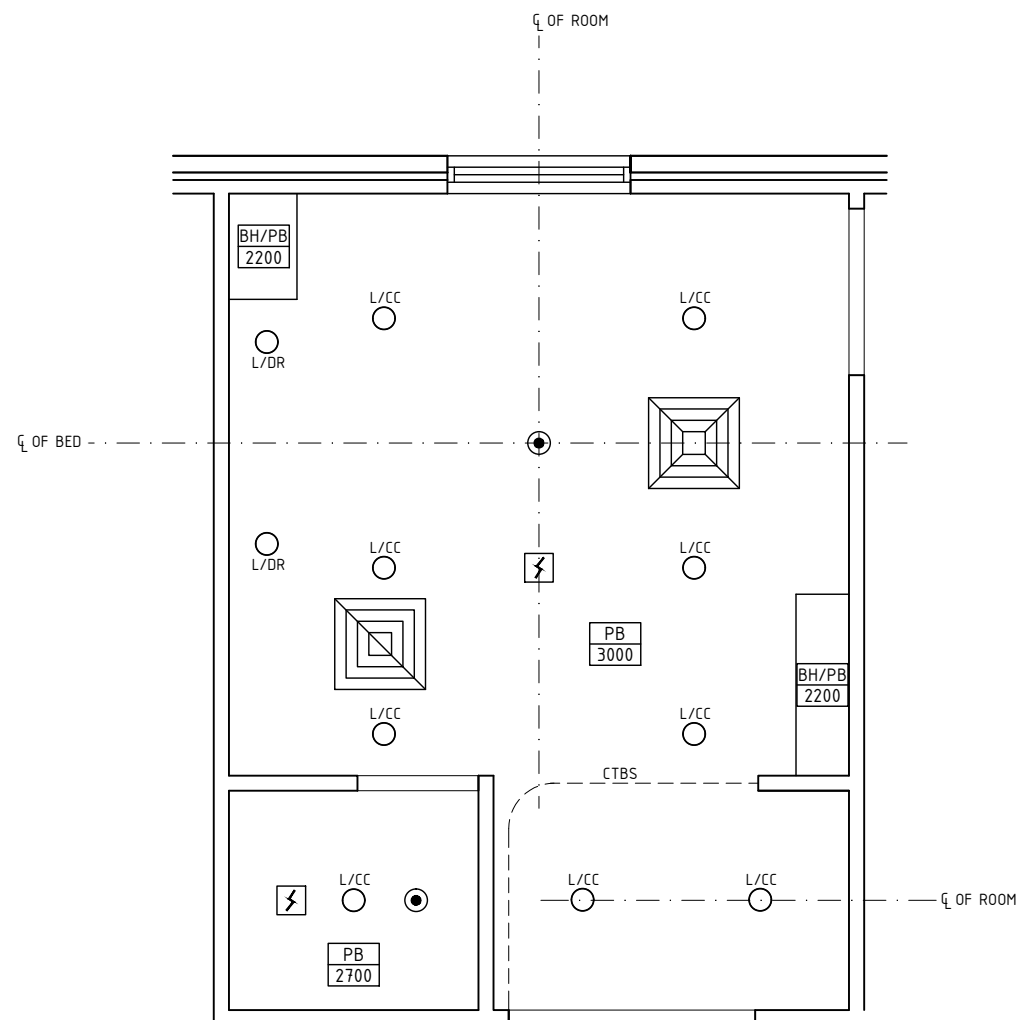
LIGHT - COLOUR CORRECTED, DIMMABLE
 LIGHT - DOWNLIGHT, RECESSED

MECHANICAL LEGEND:

SUPPLY AIR GRILLE
 RETURN AIR GRILLE

FIRE SERVICES LEGEND:

SMOKE DETECTOR
 SPRINKLER



REFLECTED CEILING PLAN

REV	DESCRIPTION	DATE	BY	REV	DESCRIPTION	DATE	BY	COMPATIBILITY
1	FIRST ISSUE	30.09.22	BK					
		International Health Facility Guidelines		International Health Facility Guidelines at: www.healthdesign.com.au/iHFG Editable version of Standard Components on Health Facility Briefing System (HFBS) at: www.healthdesign.com.au ©TAHPI				DESIGNED BK
								APPROVED CC/MM
								DATE 30.09.22
								SCALE(S) 1:50 in A3
								SHEET 3 OF 3
								PAPER DRAWING ID exas-b-i-3
								ISSUE 1

This document is for advisory purpose only