

iHFG Standard Components

Room Layout Sheet

Room Name | **Fluoroscopy Room**

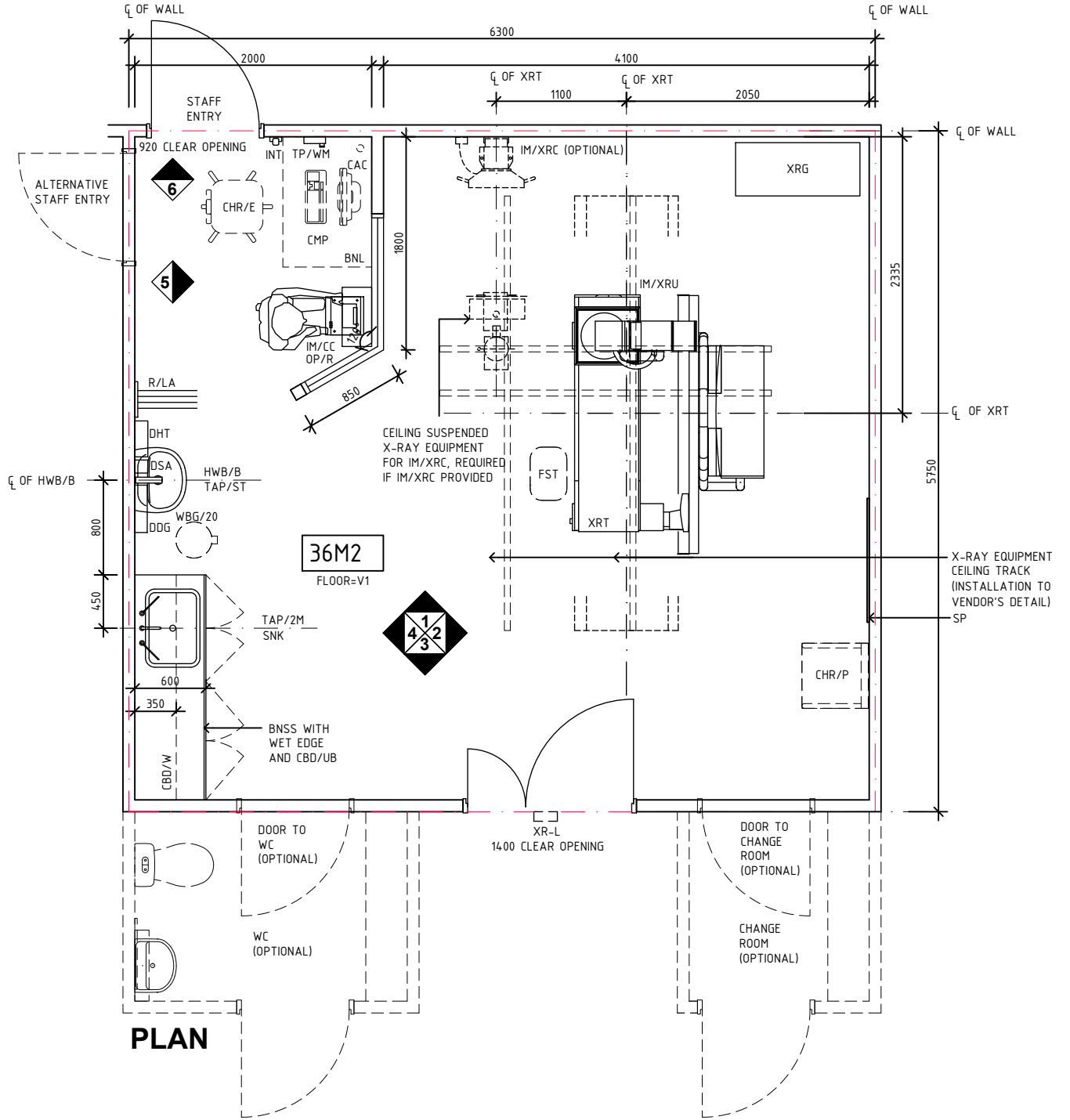
RLS Room Code

fluo-i

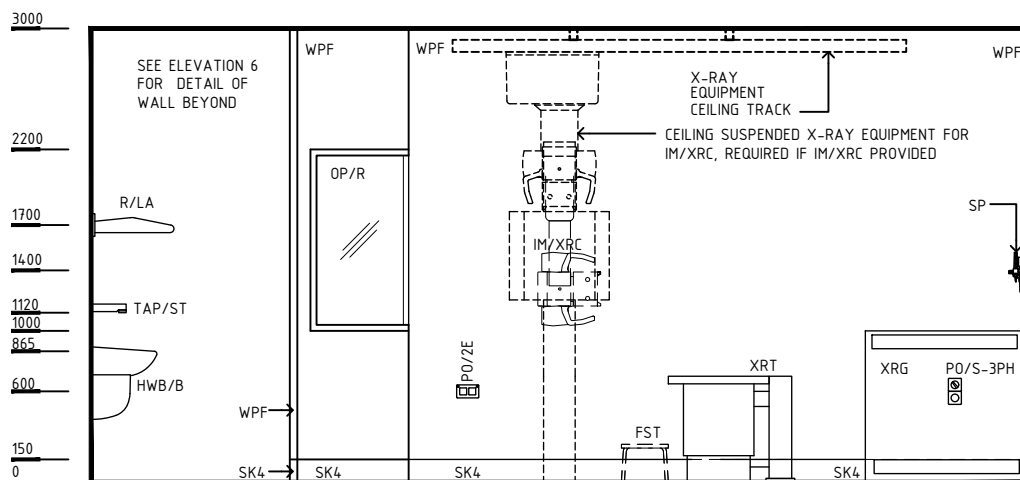
RDS Room Code

fluo-i

- AS ADJUSTABLE SHELVES
- BDP BODY PROTECTED
- BH/PB BULKHEAD - PLASTERBOARD, PAINT FINISH
- BNSS BENCH - STAINLESS STEEL
- BNL BENCH - LAMINATE
- CAC CABLE ACCESS CAP
- CBD/UB CUPBOARD - UNDER BENCH
- CBD/W CUPBOARD - WALL MOUNTED
- CHR/P CHAIR - PATIENT
- CHR/E CHAIR - ERGONOMIC, OFFICE
- CMP COMPUTER
- COM/2 COMMUNICATION OUTLET - DOUBLE
- DDG DISPENSER - DISPOSABLE GLOVE
- DFP DOOR AND DOOR FRAME PROTECTION
- DHT DISPENSER - HAND TOWEL
- DSA DISPENSER - SOAP, ANTISEPTIC
- EC EMERGENCY CALL
- FST FOOTSTOOL
- HWB/B HAND WASH BASIN - TYPE 'B'
- IM/CC IMAGING - CONSOLE, CONTROL
- IM/XRC IMAGING - X-RAY CHEST BUCKY
- IM/XRU IMAGING - X-RAY UNIT
- INT INTERCOM
- L/PT LIGHT - PELMET TASK LIGHT
- LS LIGHT SWITCH
- LS/DD LIGHT SWITCH - DOWNLIGHT DIMMER
- LS/R LIGHT SWITCH - ROOM
- MA MEDICAL AIR
- MSP MEDICAL SERVICES PANEL
- O2 OXYGEN
- OP/R OBSERVATION PANEL - RADIATION SHIELDING
- PACS PICTURE ARCHIVE AND COMMUNICATION SYSTEM
- PO/1 POWER OUTLET - SINGLE
- PO/1E POWER OUTLET - EMERGENCY, SINGLE
- PO/S-3PH POWER OUTLET - SPECIAL, 3 PHASE
- PO/2E POWER OUTLET - EMERGENCY, DOUBLE
- PO/2U UNINTERRUPTED POWER SUPPLY - DOUBLE
- R/LA RACK - LEAD APRON
- S SUCTION
- SAC STAFF ASSIST CALL
- SBK SPLASHBACK
- SK4 FLOOR VINYL COVERED SKIRTING
- SNK SINK, STAINLESS STEEL
- TAP/2M TAPWARE - DUAL MIXER
- TAP/ST TAPWARE - SENSOR TAP
- TP/WM TELEPHONE - WALL MOUNTED
- V1 VINYL FLOORING, STANDARD SLIP RESISTANT
- WBG/20 WASTE BIN - GENERAL, 20 LITRE
- WPF WALL PAINT FINISH
- XRG X-RAY GENERATOR
- XR-L 'X-RAY IN USE' LIGHT
- XRT X-RAY TABLE



NOTE:
RADIATION SHIELDING REQUIREMENTS TO BE PROVIDED BY A QUALIFIED RADIATION SHIELDING CONSULTANT



ELEVATION 1

REV	DESCRIPTION	DATE	BY	REV	DESCRIPTION	DATE	BY	COMPATIBILITY
1	FIRST ISSUE	24.10.10	CC	4	GENERAL REVISION	23.11.22	BV	iHFG
2	GENERAL REVISION	30.08.11	SK					
3	GENERAL REVISION	31.10.12	KC					

iHFG Standard Components

Room Layout Sheet

Room Name **Fluoroscopy Room**

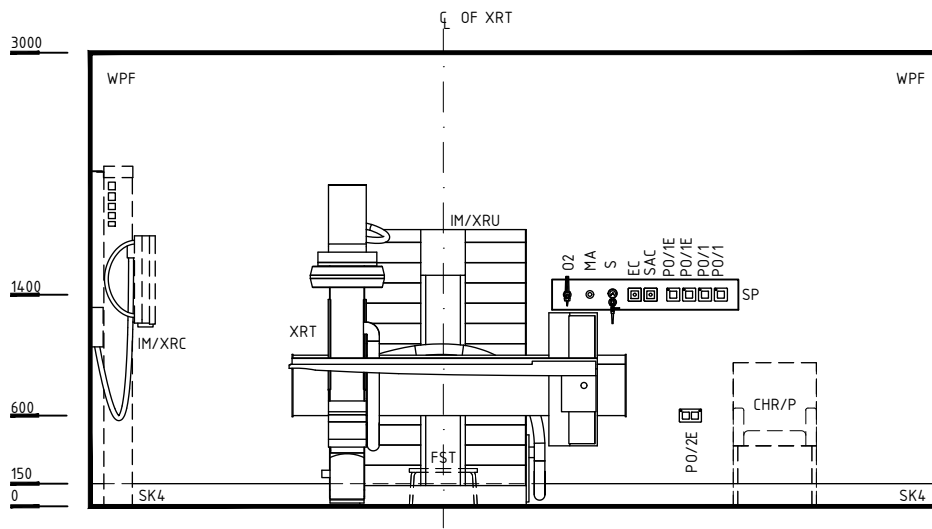
RLS Room Code

fluo-i

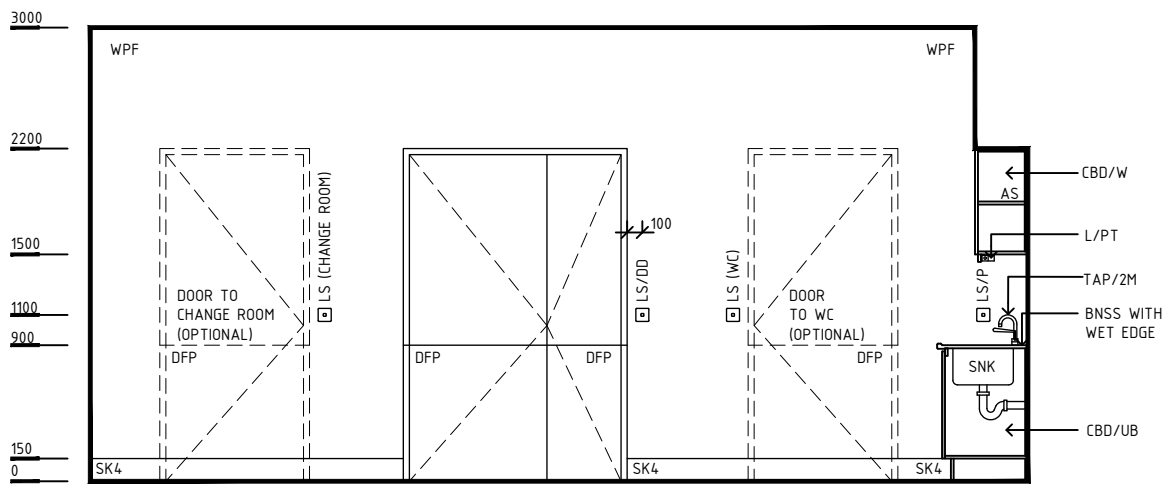
RDS Room Code

fluo-i

- AS ADJUSTABLE SHELVES
- BDP BODY PROTECTED
- BH/PB BULKHEAD - PLASTERBOARD, PAINT FINISH
- BNSS BENCH - STAINLESS STEEL
- BNL BENCH - LAMINATE
- CAC CABLE ACCESS CAP
- CBD/UB CUPBOARD - UNDER BENCH
- CBD/W CUPBOARD - WALL MOUNTED
- CHR/CL CHAIR - CLIENT
- CHR/E CHAIR - ERGONOMIC, OFFICE
- CMP COMPUTER
- COM/2 COMMUNICATION OUTLET - DOUBLE
- DDG DISPENSER - DISPOSABLE GLOVE
- DFP DOOR AND DOOR FRAME PROTECTION
- DHT DISPENSER - HAND TOWEL
- DSA DISPENSER - SOAP, ANTISEPTIC
- EC EMERGENCY CALL
- FST FOOTSTOOL
- HWB/B HAND WASH BASIN - TYPE 'B'
- IM/CC IMAGING - CONSOLE, CONTROL
- IM/XRC IMAGING - X-RAY CHEST BUCKY
- IM/XRU IMAGING - X-RAY UNIT
- INT INTERCOM
- L/PT LIGHT - PELMET TASK LIGHT
- LS LIGHT SWITCH
- LS/DD LIGHT SWITCH - DOWNLIGHT DIMMER
- LS/R LIGHT SWITCH - ROOM
- MA MEDICAL AIR
- MSP MEDICAL SERVICES PANEL
- O2 OXYGEN
- OP/R OBSERVATION PANEL - RADIATION SHIELDING
- PACS PICTURE ARCHIVE AND COMMUNICATION SYSTEM
- PO/1 POWER OUTLET - SINGLE
- PO/1E POWER OUTLET - EMERGENCY, SINGLE
- PO/S-3PH POWER OUTLET - SPECIAL, 3 PHASE
- PO/2E POWER OUTLET - EMERGENCY, DOUBLE
- PO/2U UNINTERRUPTED POWER SUPPLY - DOUBLE
- R/LA RACK - LEAD APRON
- S SUCTION
- SAC STAFF ASSIST CALL
- SBK SPLASHBACK
- SK4 FLOOR VINYL COVERED SKIRTING
- SNK SINK, STAINLESS STEEL
- TAP/2M TAPWARE - DUAL MIXER
- TAP/ST TAPWARE - SENSOR TAP
- TP/WM TELEPHONE - WALL MOUNTED
- V1 VINYL FLOORING, STANDARD SLIP RESISTANT
- WBG/20 WASTE BIN - PAPER, 20 LITRE
- WPF WALL PAINT FINISH
- XRG X-RAY GENERATOR
- XR-L 'X-RAY IN USE' LIGHT
- XRT X-RAY TABLE

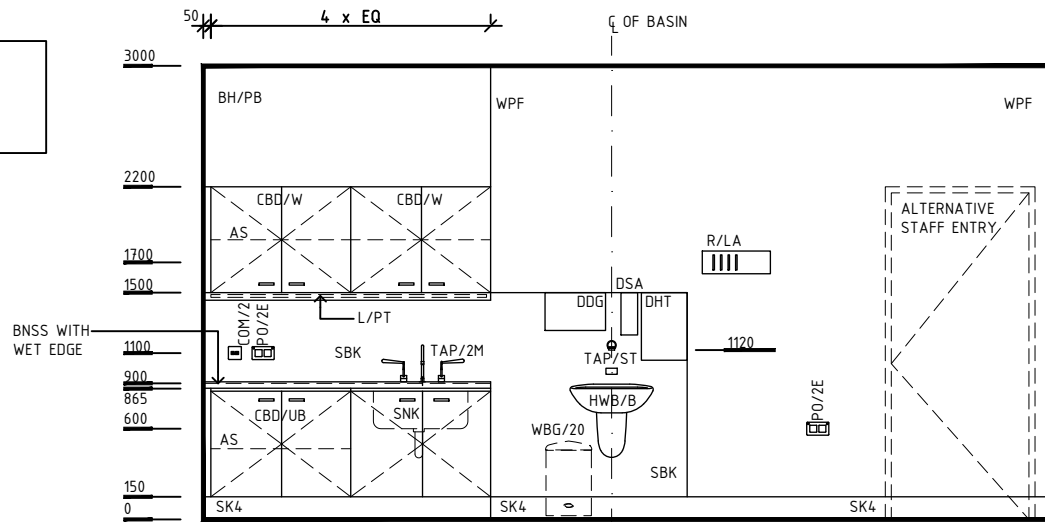


ELEVATION 2

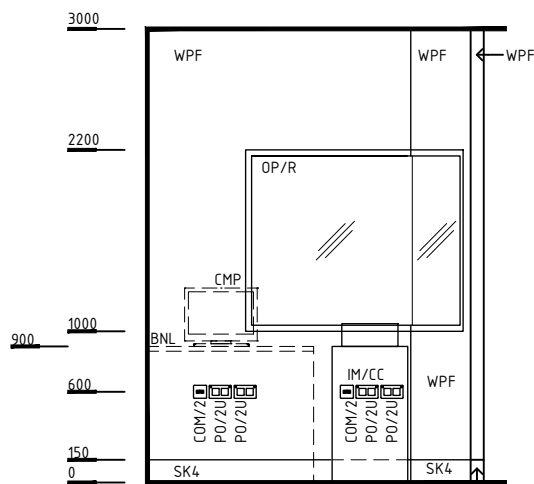


ELEVATION 3

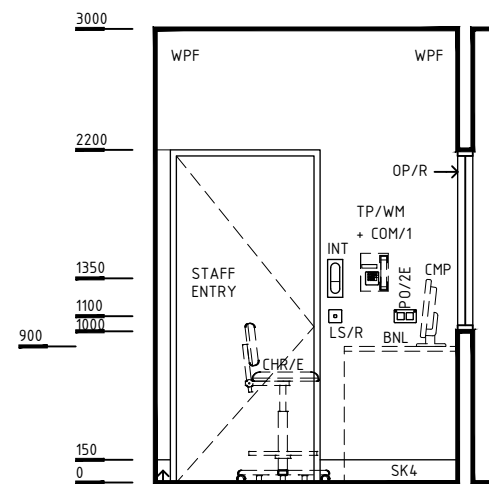
NOTE:
RADIATION SHIELDING REQUIREMENTS TO BE PROVIDED BY A QUALIFIED RADIATION SHIELDING CONSULTANT



ELEVATION 4



ELEVATION 5



ELEVATION 6

REV	DESCRIPTION	DATE	BY	REV	DESCRIPTION	DATE	BY	COMPATIBILITY
1	FIRST ISSUE	24.10.10	CC	4	GENERAL REVISION	23.11.22	BV	iHFG
2	GENERAL REVISION	30.08.11	SK					
3	GENERAL REVISION	31.10.12	KC					



International Health Facility Guidelines at:
www.healthdesign.com.au/iHFG
Editable version of Standard Components on
Health Facility Briefing System (HFBS) at:
www.healthdesign.com.au ©TAHPI



DESIGNED	APPROVED	DATE	SCALE(S)	SHEET
BK	RH	23.11.22	1:50 in A3	2 OF 3
CAD FILE NAME		PAPER DRAWING ID		ISSUE
fluo-i		fluo-i-1		4

iHFG Standard Components

Room Layout Sheet

Room Name **Fluoroscopy Room**

RLS Room Code

fluo-i

RDS Room Code

fluo-i

GENERAL NOTES:

THIS DRAWING TO BE READ IN CONJUNCTION WITH R.D.S. (ROOM DATA SHEETS) WHICH TAKES PRECEDENCE.

ALL SERVICES INDICATED ARE INDICATIVE AND SUBJECT TO DETAILED PROJECT SPECIFIC ENGINEERING DESIGN.

CEILING LEGEND:

- ACT | ACOUSTIC CEILING TILES
- PCS | POWDERCOAT ALUMINIUM CORNICE, FLUSHED AGAINST WALL
- | GRID LINE
- [Grid] | TILE CEILING GRID (600 x 600)
- [ACT 3000] | CEILING TYPE
HEIGHT ABOVE F.F.L.

ELECTRICAL LEGEND:

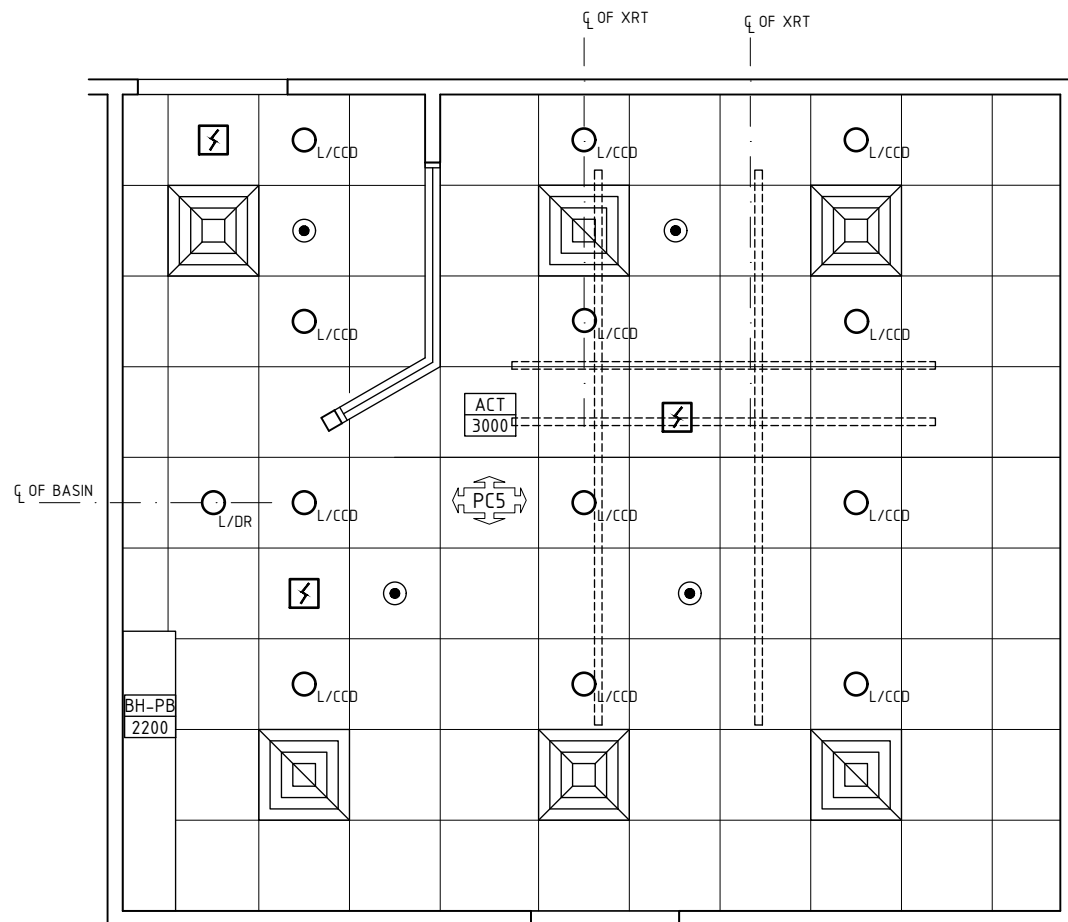
- [L/CCD] | LIGHT - COLOUR CORRECTED, DIMMABLE
- [L/DR] | LIGHT - DOWNLIGHT, RECESSED

MECHANICAL LEGEND:

- [Supply Grille] | SUPPLY AIR GRILLE
- [Return Grille] | RETURN AIR GRILLE

FIRE SERVICES LEGEND:

- [SD] | SMOKE DETECTOR
- [S] | SPRINKLER



REFLECTED CEILING PLAN

REV	DESCRIPTION	DATE	BY	REV	DESCRIPTION	DATE	BY	COMPATIBILITY
1	FIRST ISSUE	24.10.10	CC	4	GENERAL REVISION	23.11.22	BV	iHFG
2	GENERAL REVISION	30.08.11	SK					
3	GENERAL REVISION	31.10.12	KC					



International Health Facility Guidelines at:
www.healthdesign.com.au/iHFG
 Editable version of Standard Components on
 Health Facility Briefing System (HFBS) at:
www.healthdesign.com.au/TAHPI



DESIGNED	APPROVED	DATE	SCALE(S)	SHEET
BK	RH	23.11.22	1:50 in A3	3 OF 3
CAD FILE NAME		PAPER DRAWING ID		ISSUE
fluo-i		fluo-i-1		4