

iHFG Standard Components

Room Layout Sheet

Room Name | Lounge/ Dining - Activities (Mental Health), 20m2

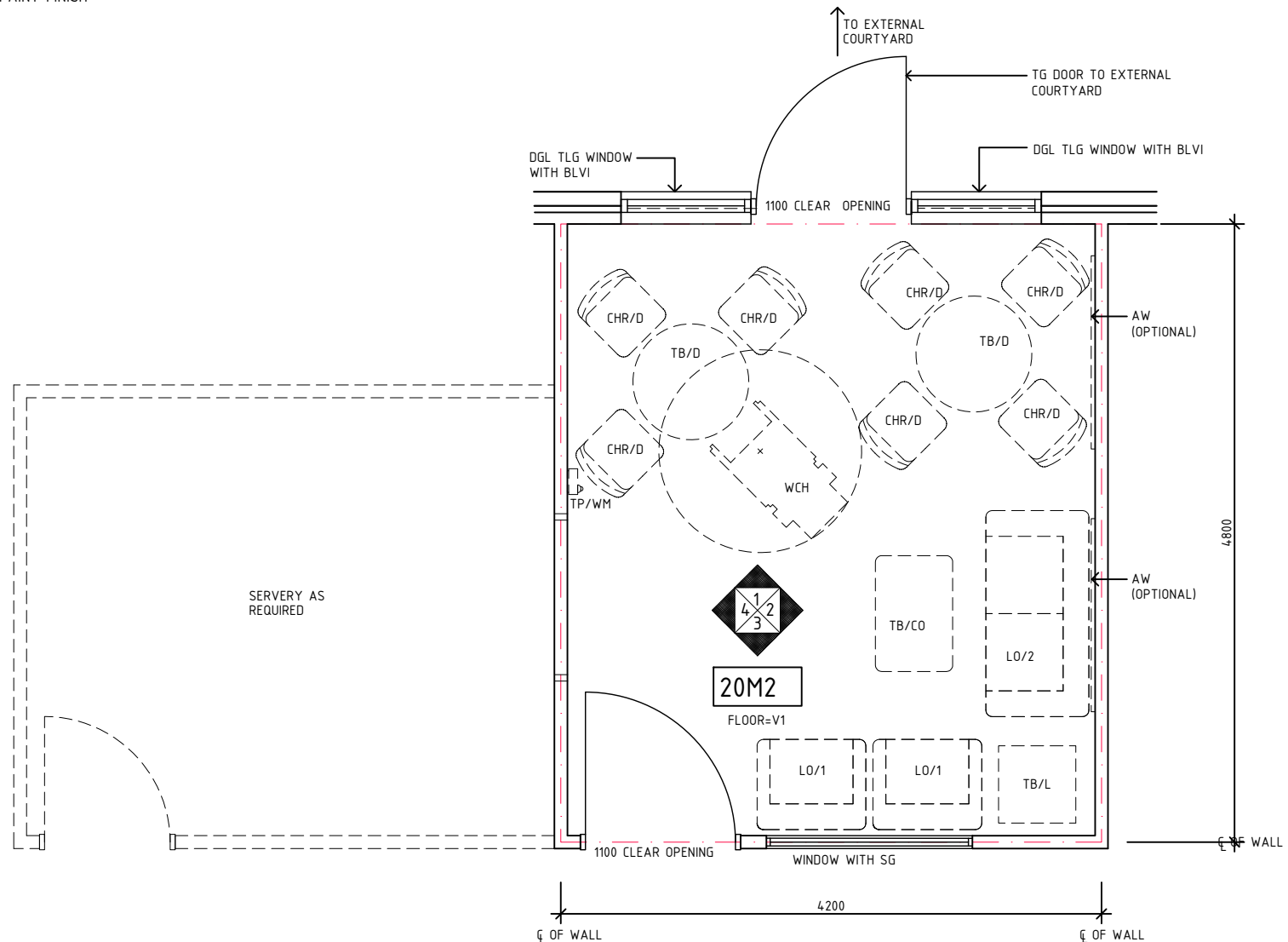
RLS Room Code

lda-mh-20-i

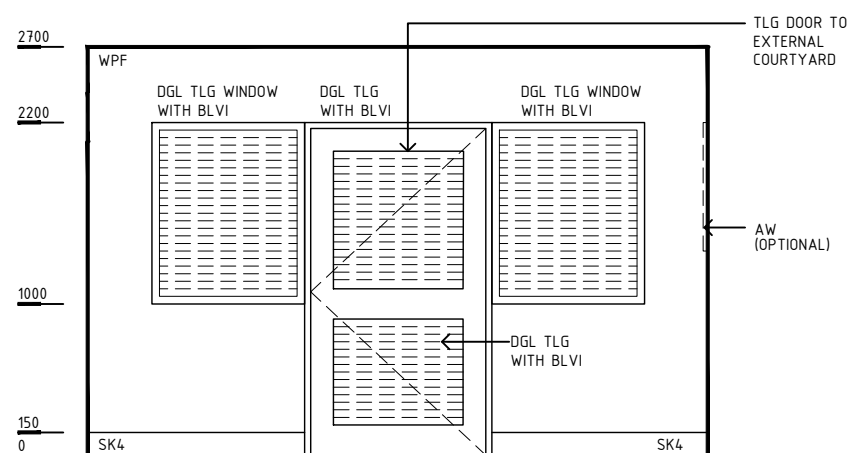
RDS Room Code

lda-mh-20-i

AW	ARTWORK
BLVI	BLIND - VENETIAN, INTEGRAL
C	CLOCK
CHR/D	CHAIR - DINING
COM/1	COMMUNICATION OUTLET - SINGLE
DGL	DOUBLE GLAZED
EC	EMERGENCY CALL
LO/1	LOUNGE - 1 SEAT
LO/2	LOUNGE - 2 SEAT
LS/R	LIGHT SWITCH - ROOM
PO/2	POWER OUTLET - DOUBLE
PO/C	POWER OUTLET - CLEANER'S
SG	SAFETY GLASS
SK4	FLOOR VINYL COVED SKIRTING
TB/CO	TABLE - COFFEE
TB/D	TABLE - DINING
TB/L	TABLE - LOW
TLG	TOUGHENED LAMINATED GLASS
TP/WM	TELEPHONE - WALL MOUNTED
V1	VINYL FLOORING, STANDARD SLIP RESISTANT
WCH	WHEELCHAIR
WPF	WALL PAINT FINISH



PLAN



ELEVATION 1

REV	DESCRIPTION	DATE	BY	REV	DESCRIPTION	DATE	BY	COMPATIBILITY
1	FIRST ISSUE	24.10.10	CC	4	GENERAL REVISION	19.10.22	BV	
2	GENERAL REVISION	30.08.11	SK					
3	GENERAL REVISION	31.10.12	CT					



International Health Facility Guidelines at:
www.healthdesign.com.au/iHFG
 Editable version of Standard Components on
 Health Facility Briefing System (HFBS) at:
www.healthdesign.com.au/TAHPI



DESIGNED	APPROVED	DATE	SCALE(S)	SHEET
BV	RH	19.10.22	1:50 in A3	1 OF 3
CAD FILE NAME		PAPER DRAWING ID		ISSUE
lda-mh-20-i		lda-mh-20-i-1		4

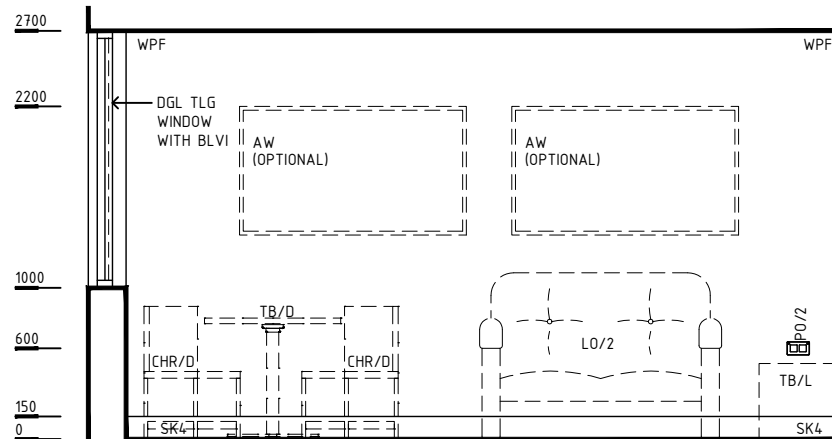
This document is for advisory purpose only

iHFG Standard Components

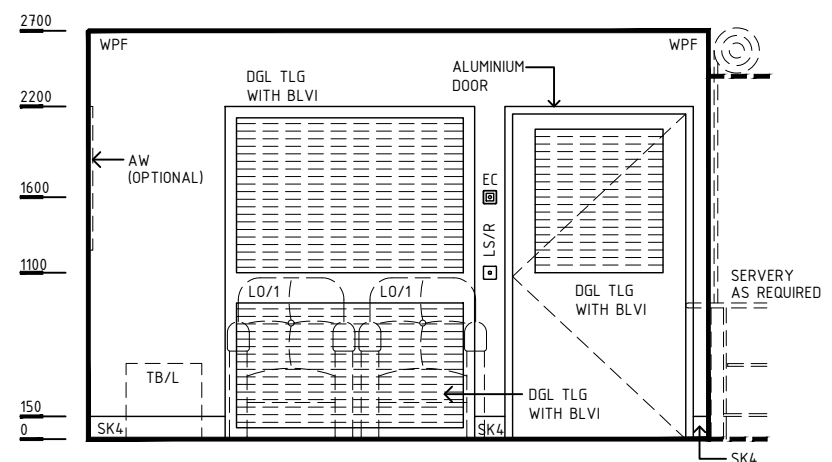
Room Layout Sheet

Room Name	Lounge/ Dining - Activities (Mental Health), 20m2	RLS Room Code	lda-mh-20-i
		RDS Room Code	lda-mh-20-i

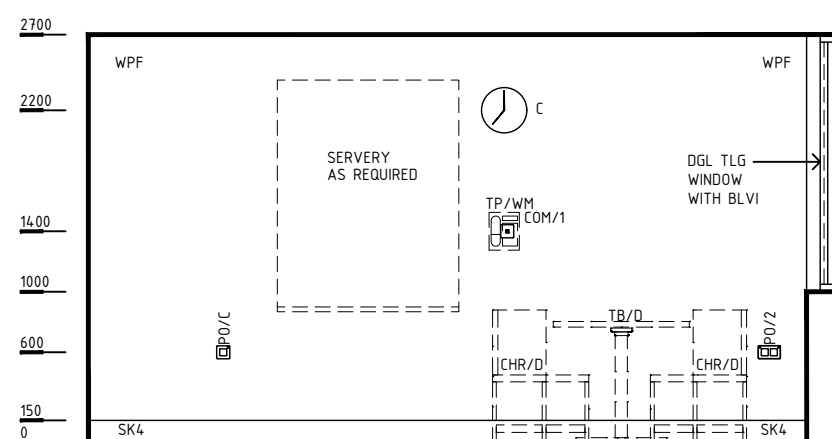
AW	ARTWORK
BLVI	BLIND - VENETIAN, INTEGRAL
C	CLOCK
CHR/D	CHAIR - DINING
COM/1	COMMUNICATION OUTLET - SINGLE
DGL	DOUBLE GLAZED
EC	EMERGENCY CALL
LO/1	LOUNGE - 1 SEAT
LO/2	LOUNGE - 2 SEAT
LS/R	LIGHT SWITCH - ROOM
PO/2	POWER OUTLET - DOUBLE
PO/C	POWER OUTLET - CLEANER'S
SG	SAFETY GLASS
SK4	FLOOR VINYL COVED SKIRTING
TB/CO	TABLE - COFFEE
TB/D	TABLE - DINING
TB/L	TABLE - LOW
TLG	TOUGHENED LAMINATED GLASS
TP/WM	TELEPHONE - WALL MOUNTED
V1	VINYL FLOORING, STANDARD SLIP RESISTANT
WCH	WHEELCHAIR
WPF	WALL PAINT FINISH



ELEVATION 2



ELEVATION 3



ELEVATION 4

REV	DESCRIPTION	DATE	BY	REV	DESCRIPTION	DATE	BY	COMPATIBILITY																				
1	FIRST ISSUE	24.10.10	CC	4	GENERAL REVISION	19.10.22	BV	iHFG																				
2	GENERAL REVISION	30.08.11	SK																									
3	GENERAL REVISION	31.10.12	CT																									
<table border="1"> <tr> <td>DESIGNED</td> <td>APPROVED</td> <td>DATE</td> <td>SCALE(S)</td> <td>SHEET</td> </tr> <tr> <td>BV</td> <td>RH</td> <td>19.10.22</td> <td>1:50 in A3</td> <td>2 OF 3</td> </tr> <tr> <td colspan="2">CAD FILE NAME</td> <td colspan="2">PAPER DRAWING ID</td> <td>ISSUE</td> </tr> <tr> <td colspan="2">lda-mh-20-i</td> <td colspan="2">lda-mh-20-i-2</td> <td>4</td> </tr> </table>								DESIGNED	APPROVED	DATE	SCALE(S)	SHEET	BV	RH	19.10.22	1:50 in A3	2 OF 3	CAD FILE NAME		PAPER DRAWING ID		ISSUE	lda-mh-20-i		lda-mh-20-i-2		4	
DESIGNED	APPROVED	DATE	SCALE(S)	SHEET																								
BV	RH	19.10.22	1:50 in A3	2 OF 3																								
CAD FILE NAME		PAPER DRAWING ID		ISSUE																								
lda-mh-20-i		lda-mh-20-i-2		4																								

iHFG Standard Components

Room Layout Sheet

Room Name **Lounge/ Dining - Activities (Mental Health), 20m2**

RLS Room Code

lda-mh-20-i

RDS Room Code

lda-mh-20-i

GENERAL NOTES:

THIS DRAWING TO BE READ IN CONJUNCTION WITH R.D.S. (ROOM DATA SHEETS) WHICH TAKES PRECEDENCE.

ALL SERVICES INDICATED ARE INDICATIVE AND SUBJECT TO DETAILED PROJECT SPECIFIC ENGINEERING DESIGN.

CEILING LEGEND:

- PB PLASTERBOARD FLUSH SET CEILING, PAINT
- PC3 PLASTER BOARD SQUARE SET CORNICE
- GRID LINE

- PB CEILING TYPE
- 2700 HEIGHT ABOVE F.F.L.

ELECTRICAL LEGEND:

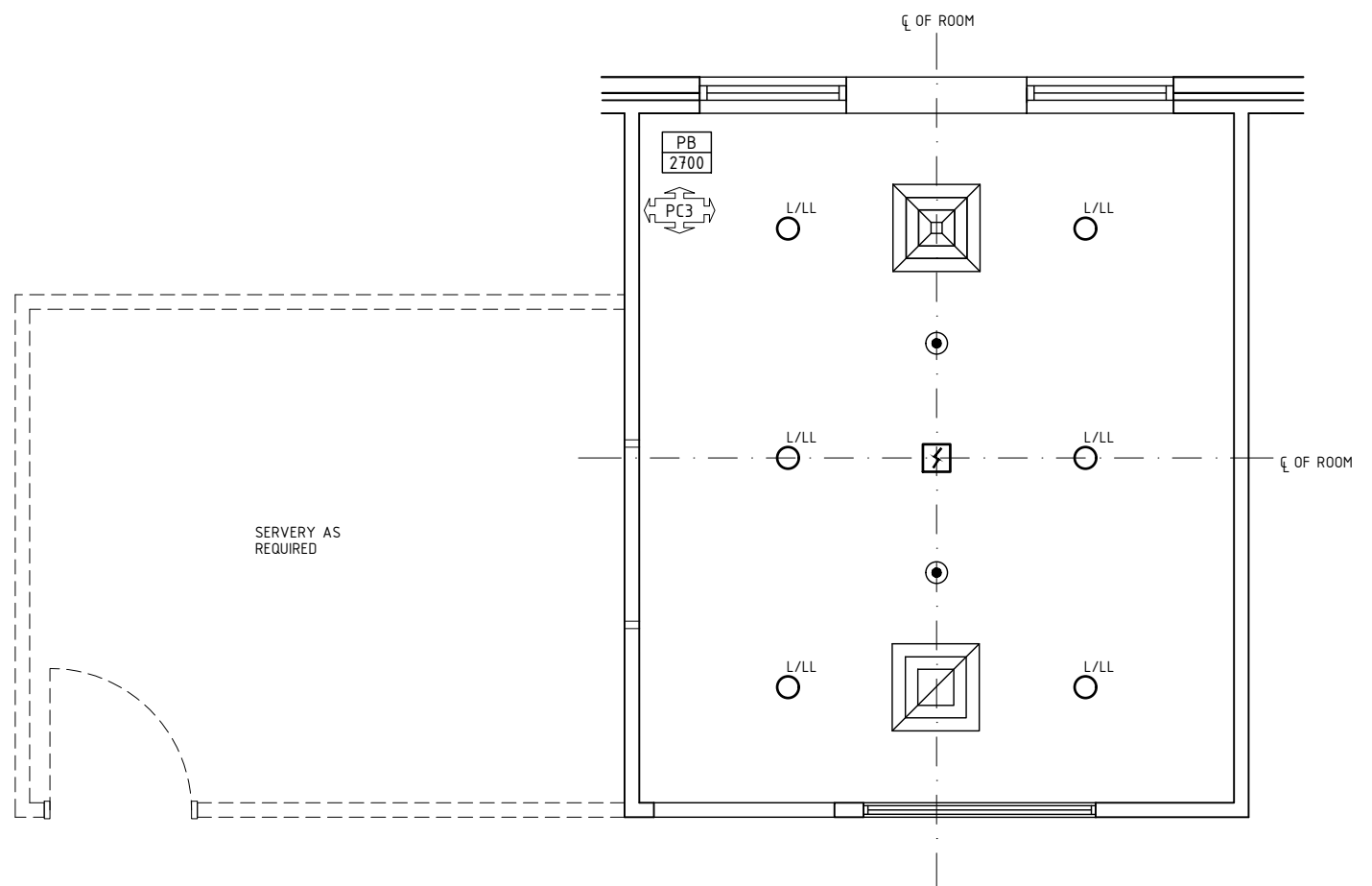
- L/LL LIGHT - LED LIGHT, TAMPER PROOF

MECHANICAL LEGEND:

- SUPPLY AIR GRILLE, TAMPER PROOF
- RETURN AIR GRILLE, TAMPER PROOF

FIRE SERVICES LEGEND:

- SMOKE DETECTOR, TAMPER PROOF
- SPRINKLER, TAMPER PROOF



REFLECTED CEILING PLAN

REV	DESCRIPTION	DATE	BY	REV	DESCRIPTION	DATE	BY	COMPATIBILITY
1	FIRST ISSUE	24.10.10	CC	4	GENERAL REVISION	19.10.22	BV	iHFG
2	GENERAL REVISION	30.08.11	SK					
3	GENERAL REVISION	31.10.12	CT					