

# iHFG Standard Components

## Room Layout Sheet

RLS Room Code

lec-75-i

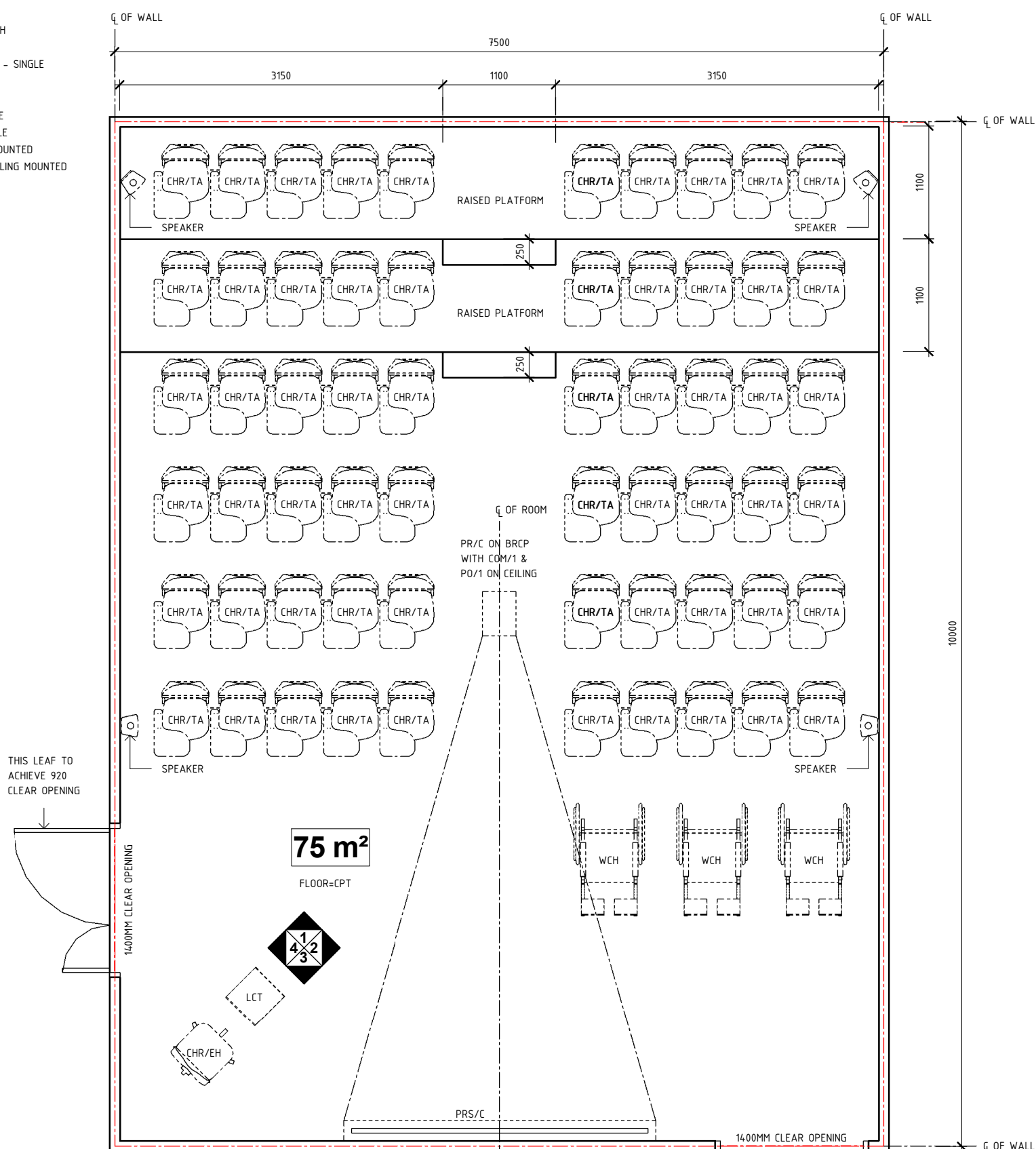
RDS Room Code

lec-75-i

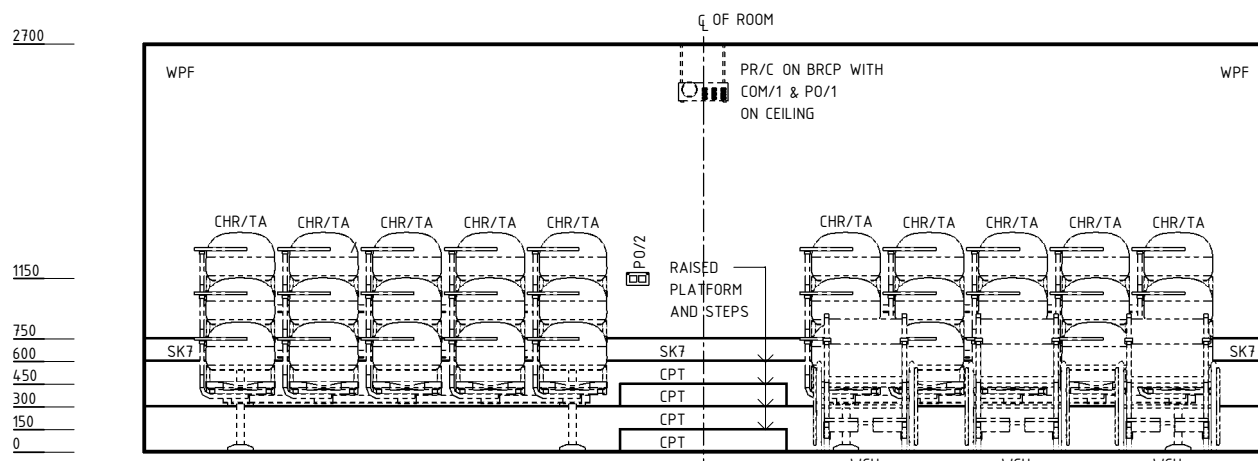
Room Name

Lecture Room, 75m2

- BRCP BRACKET - PROJECTOR
- CHR/EH CHAIR - ERGONOMIC, HIGH
- CHR/TA CHAIR - TABLET ARM
- COM/1 COMMUNICATION OUTLET - SINGLE
- CPT CARPET
- LCT LECTERN
- PO/1 POWER OUTLET - SINGLE
- PO/2 POWER OUTLET - DOUBLE
- PR/C PROJECTOR - CEILING MOUNTED
- PRS/C PROJECTION SCREEN, CEILING MOUNTED
- SK7 TIMBER SKIRTING
- WCH WHEELCHAIR
- WPF WALL PAINT FINISH



PLAN



ELEVATION 1

REV	DESCRIPTION	DATE	BY	REV	DESCRIPTION	DATE	BY	COMPATIBILITY																				
1	FIRST ISSUE	24.10.10	LL	4	GENERAL REVISION	27.01.23	AM																					
2	GENERAL REVISION	30.08.11	SK																									
3	GENERAL REVISION	31.10.12	CT																									
								<table border="1"> <thead> <tr> <th>DESIGNED</th> <th>APPROVED</th> <th>DATE</th> <th>SCALE(S)</th> <th>SHEET</th> </tr> </thead> <tbody> <tr> <td>AM</td> <td>SA</td> <td>27.01.23</td> <td>1 : 50</td> <td>1 OF 4</td> </tr> <tr> <td colspan="2">REVIT FILE NAME</td> <td colspan="2">PAPER DRAWING ID</td> <td>ISSUE</td> </tr> <tr> <td colspan="2">lec-75-i</td> <td colspan="2">lec-75-i-1</td> <td>4</td> </tr> </tbody> </table>	DESIGNED	APPROVED	DATE	SCALE(S)	SHEET	AM	SA	27.01.23	1 : 50	1 OF 4	REVIT FILE NAME		PAPER DRAWING ID		ISSUE	lec-75-i		lec-75-i-1		4
DESIGNED	APPROVED	DATE	SCALE(S)	SHEET																								
AM	SA	27.01.23	1 : 50	1 OF 4																								
REVIT FILE NAME		PAPER DRAWING ID		ISSUE																								
lec-75-i		lec-75-i-1		4																								

# iHFG Standard Components

## Room Layout Sheet

RLS Room Code

lec-75-i

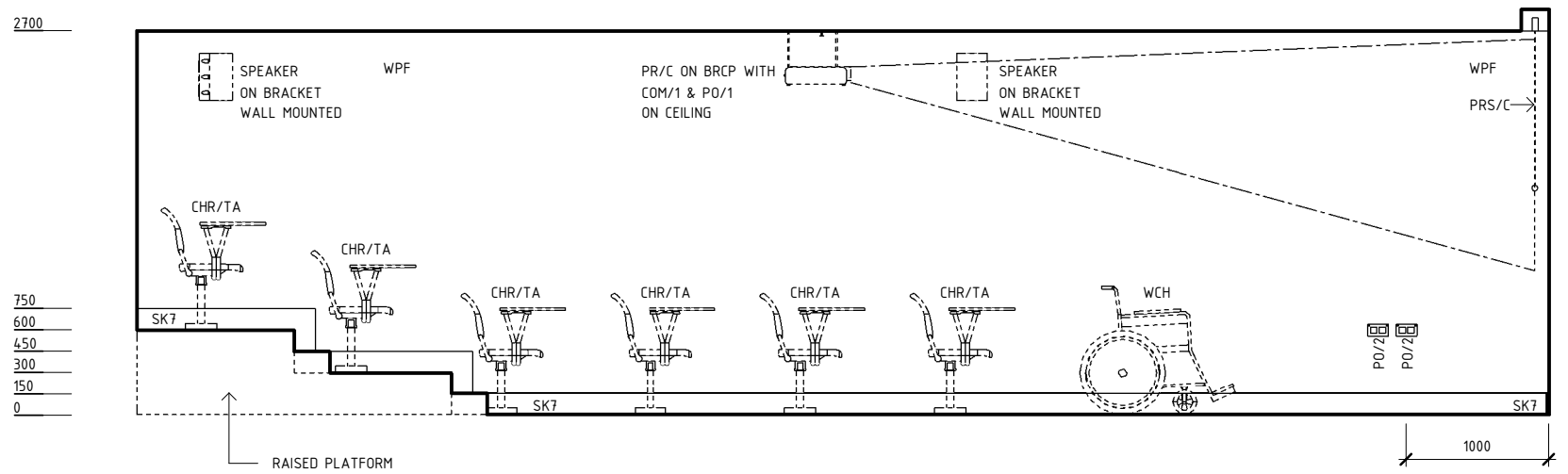
RDS Room Code

lec-75-i

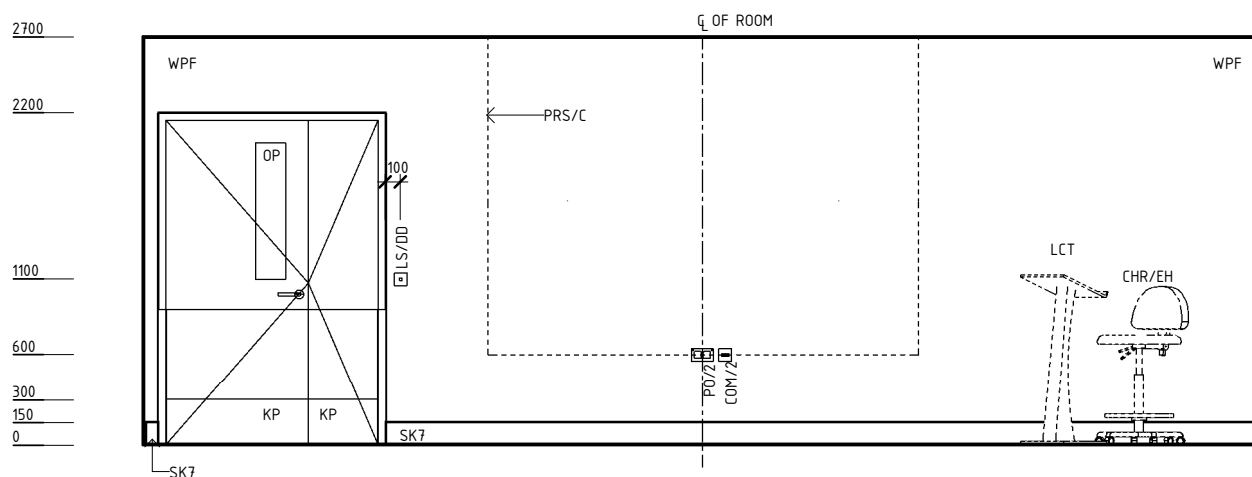
Room Name

Lecture Room, 75m2

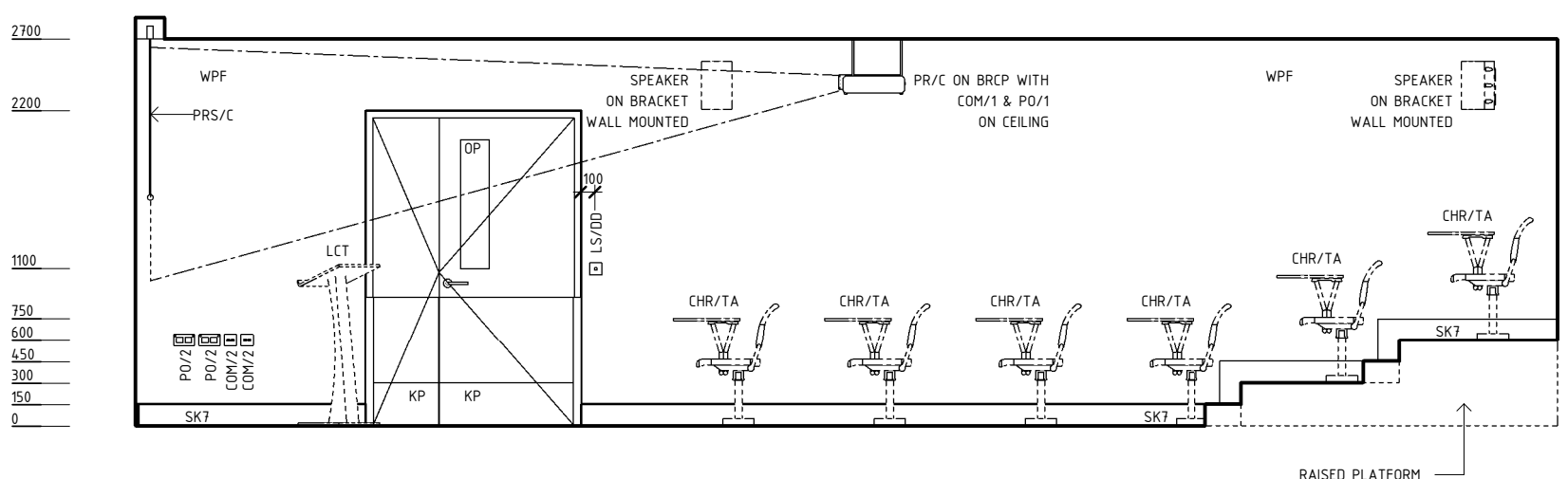
BRCP	BRACKET - PROJECTOR
CHR/EH	CHAIR - ERGONOMIC, HIGH
CHR/TA	CHAIR - TABLET ARM
COM/2	COMMUNICATION OUTLET - DOUBLE
KP	KICKPLATE
LCT	LECTERN
LS/DD	LIGHT SWITCH - DOWNLIGHT DIMMER
OP	OBSERVATION PANEL
PO/2	POWER OUTLET - DOUBLE
PRS/C	PROJECTION SCREEN, CEILING MOUNTED
SK7	TIMBER SKIRTING
WCH	WHEELCHAIR
WPF	WALL PAINT FINISH



**ELEVATION 2**



**ELEVATION 3**



**ELEVATION 4**

REV	DESCRIPTION	DATE	BY	REV	DESCRIPTION	DATE	BY	COMPATIBILITY																				
1	FIRST ISSUE	24.10.10	LL	4	GENERAL REVISION	27.01.23	AM																					
2	GENERAL REVISION	30.08.11	SK																									
3	GENERAL REVISION	31.10.12	CT																									
								<table border="1"> <thead> <tr> <th>DESIGNED</th> <th>APPROVED</th> <th>DATE</th> <th>SCALE(S)</th> <th>SHEET</th> </tr> </thead> <tbody> <tr> <td>Author</td> <td>Checker</td> <td>27.01.23</td> <td>1 : 50</td> <td>2 OF</td> </tr> <tr> <td colspan="2">REVIT FILE NAME</td> <td colspan="2">PAPER DRAWING ID</td> <td>ISSUE</td> </tr> <tr> <td colspan="2">lec-75-i</td> <td colspan="2">lec-75-i-2</td> <td>4</td> </tr> </tbody> </table>	DESIGNED	APPROVED	DATE	SCALE(S)	SHEET	Author	Checker	27.01.23	1 : 50	2 OF	REVIT FILE NAME		PAPER DRAWING ID		ISSUE	lec-75-i		lec-75-i-2		4
DESIGNED	APPROVED	DATE	SCALE(S)	SHEET																								
Author	Checker	27.01.23	1 : 50	2 OF																								
REVIT FILE NAME		PAPER DRAWING ID		ISSUE																								
lec-75-i		lec-75-i-2		4																								

This document is for advisory purpose only



International Health Facility Guidelines at:  
[www.healthdesign.com.au/iHFG](http://www.healthdesign.com.au/iHFG)  
 Editable version of Standard Components on  
 Health Facility Briefing System (HFBS) at:  
[www.healthdesign.com.au](http://www.healthdesign.com.au) ©TAHPI



# iHFG Standard Components

## Room Layout Sheet

RLS Room Code

lec-75-i

RDS Room Code

lec-75-i

Room Name

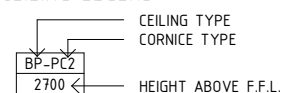
Lecture Room, 75m2

### GENERAL NOTES:

THIS DRAWING TO BE READ IN CONJUNCTION WITH R.D.S. (ROOM DATA SHEETS) WHICH TAKES PRECEDENCE.

ALL SERVICES INDICATED ARE INDICATIVE AND SUBJECTED TO DETAILED PROJECT SPECIFIC ENGINEERING DESIGN.

### CEILING LEGEND:



ACT-PC4 ACOUSTIC CEILING TILES WITH SHADOW ANGLE, POWDERCOAT ALUMINIUM CORNICIE

TILE CEILING GRID (600 x 600)

GRID LINE

### ELECTRICAL LEGEND:

○ L/DD LIGHT - DOWNLIGHT, DIMMABLE

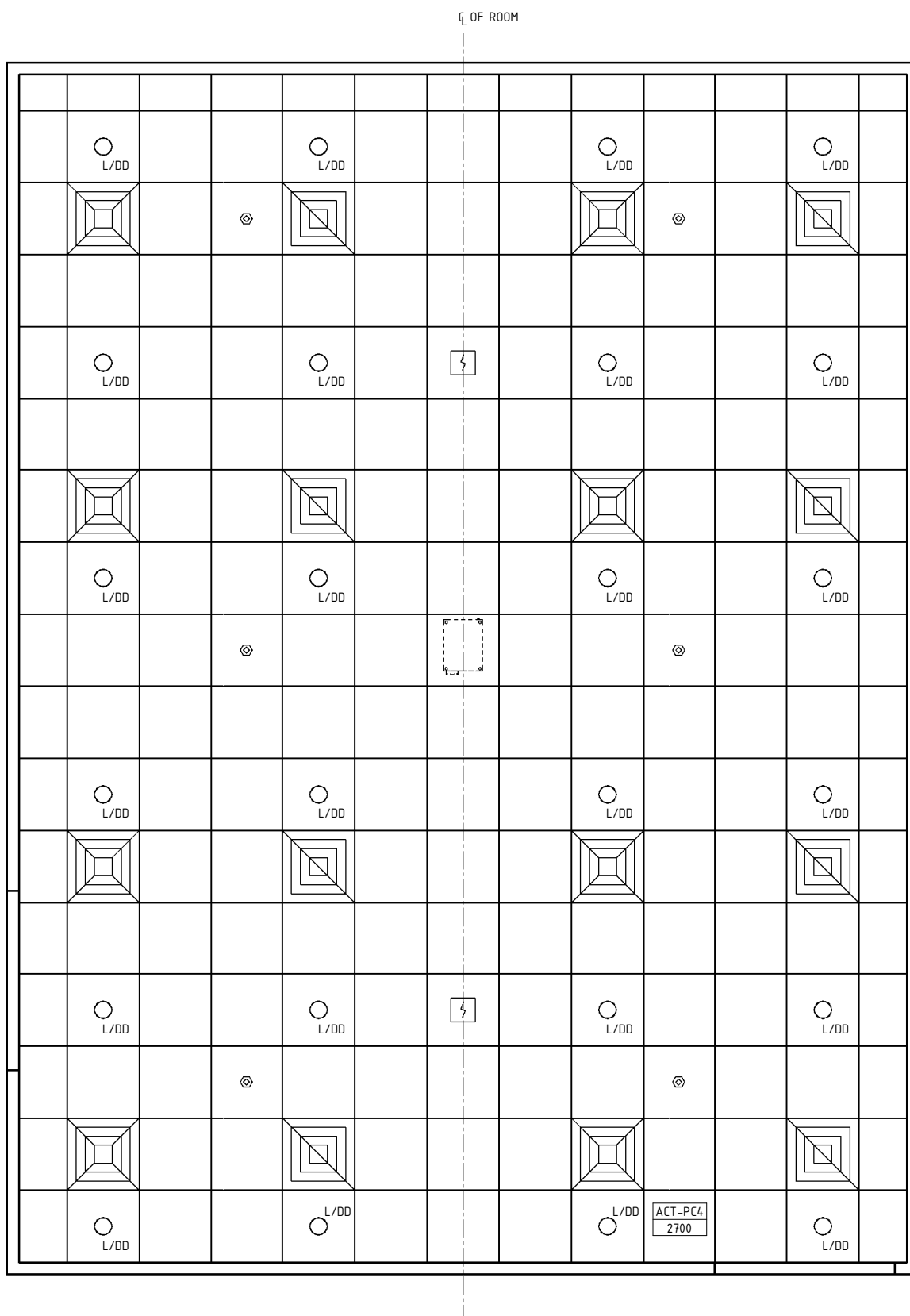
### MECHANICAL LEGEND:



### FIRE SERVICES LEGEND:

⚡ SMOKE DETECTOR

⊙ SPRINKLER



## REFLECTED CEILING PLAN

REV	DESCRIPTION	DATE	BY	REV	DESCRIPTION	DATE	BY	COMPATIBILITY				
1	FIRST ISSUE	24.10.10	LL	4	GENERAL REVISION	27.01.23	AM	iHFG				
2	GENERAL REVISION	30.08.11	SK									
3	GENERAL REVISION	31.10.12	CT									
								DESIGNED	APPROVED	DATE	SCALE(S)	SHEET
								AM	SA	27.01.23	1 : 50	3 OF 4
								REVIT FILE NAME		PAPER DRAWING ID		ISSUE
								lec-75-i		lec-75-i-3		4

# iHFG Standard Components

Room Layout Sheet

RLS Room Code

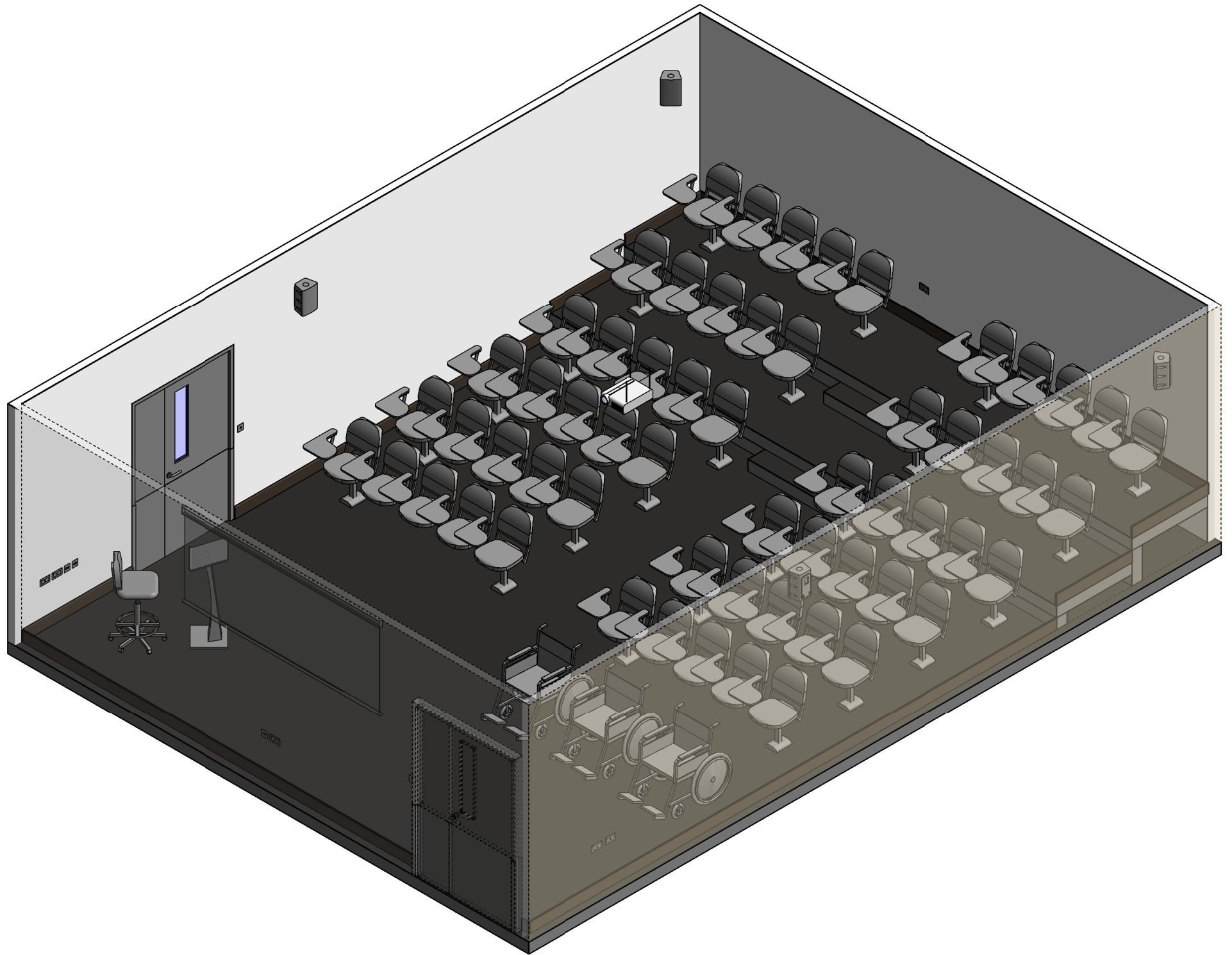
lec-75-i

RDS Room Code

lec-75-i

Room Name

Lecture Room, 75m2



ISOMETRIC VIEW 01

REV	DESCRIPTION	DATE	BY	REV	DESCRIPTION	DATE	BY	COMPATIBILITY																				
1	FIRST ISSUE	24.10.10	LL	4	GENERAL REVISION	27.01.23	AM	iHFG																				
2	GENERAL REVISION	30.08.11	SK																									
3	GENERAL REVISION	31.10.12	CT																									
<p>International Health Facility Guidelines at:  <a href="http://www.healthdesign.com.au/iHFG">www.healthdesign.com.au/iHFG</a>                      Editable version of Standard Components on                      Health Facility Briefing System (HFBS) at:  <a href="http://www.healthdesign.com.au">www.healthdesign.com.au</a> ©TAHPI</p>								<table border="1"> <tr> <th>DESIGNED</th> <th>APPROVED</th> <th>DATE</th> <th>SCALE(S)</th> <th>SHEET</th> </tr> <tr> <td>AM</td> <td>SA</td> <td>27.01.23</td> <td></td> <td>4 OF</td> </tr> <tr> <th colspan="2">REVIT FILE NAME</th> <th colspan="2">PAPER DRAWING ID</th> <th>ISSUE</th> </tr> <tr> <td colspan="2">lec-75-i</td> <td colspan="2">lec-75-i-4</td> <td>4</td> </tr> </table>	DESIGNED	APPROVED	DATE	SCALE(S)	SHEET	AM	SA	27.01.23		4 OF	REVIT FILE NAME		PAPER DRAWING ID		ISSUE	lec-75-i		lec-75-i-4		4
DESIGNED	APPROVED	DATE	SCALE(S)	SHEET																								
AM	SA	27.01.23		4 OF																								
REVIT FILE NAME		PAPER DRAWING ID		ISSUE																								
lec-75-i		lec-75-i-4		4																								

This document is for advisory purpose only