

# iHFG Standard Components

## Room Layout Sheet

Room Name **Majlis**

RLS Room Code

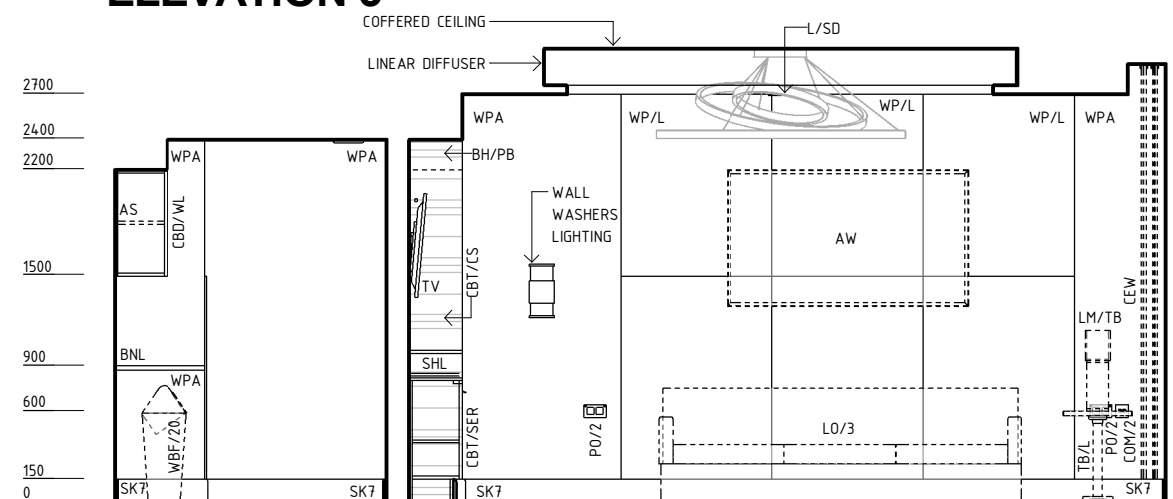
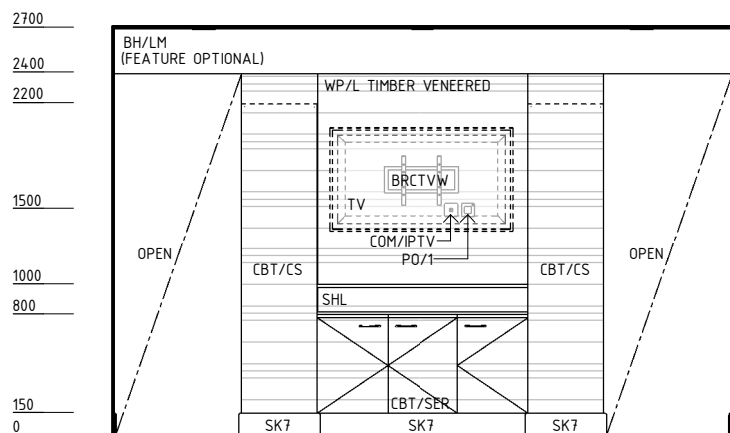
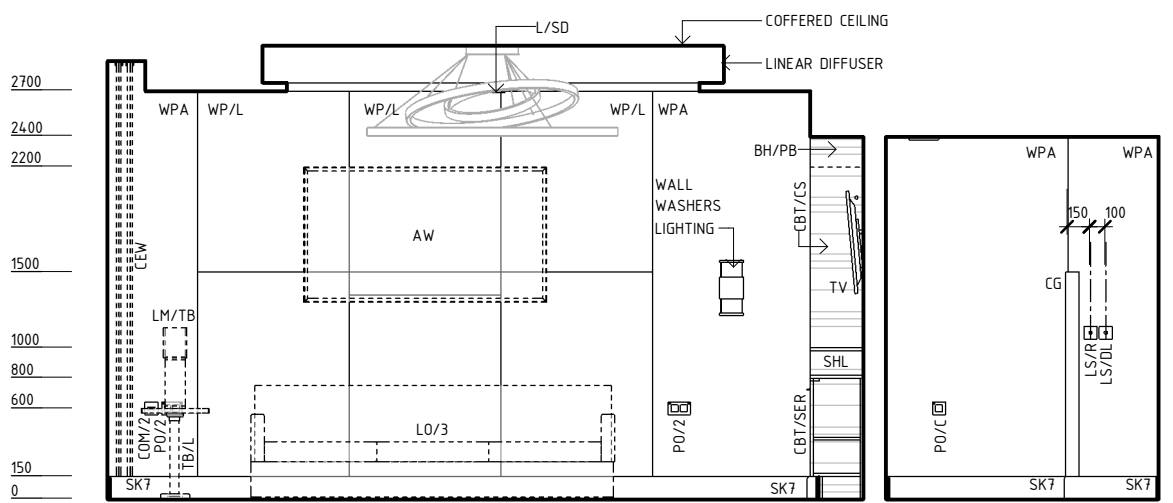
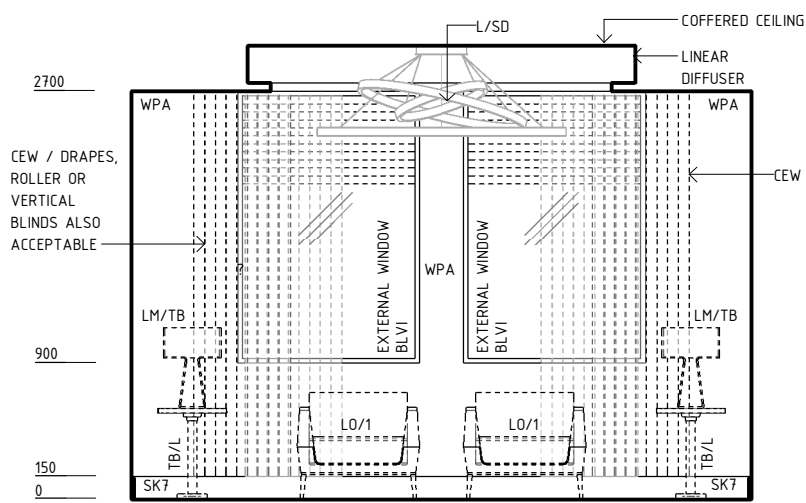
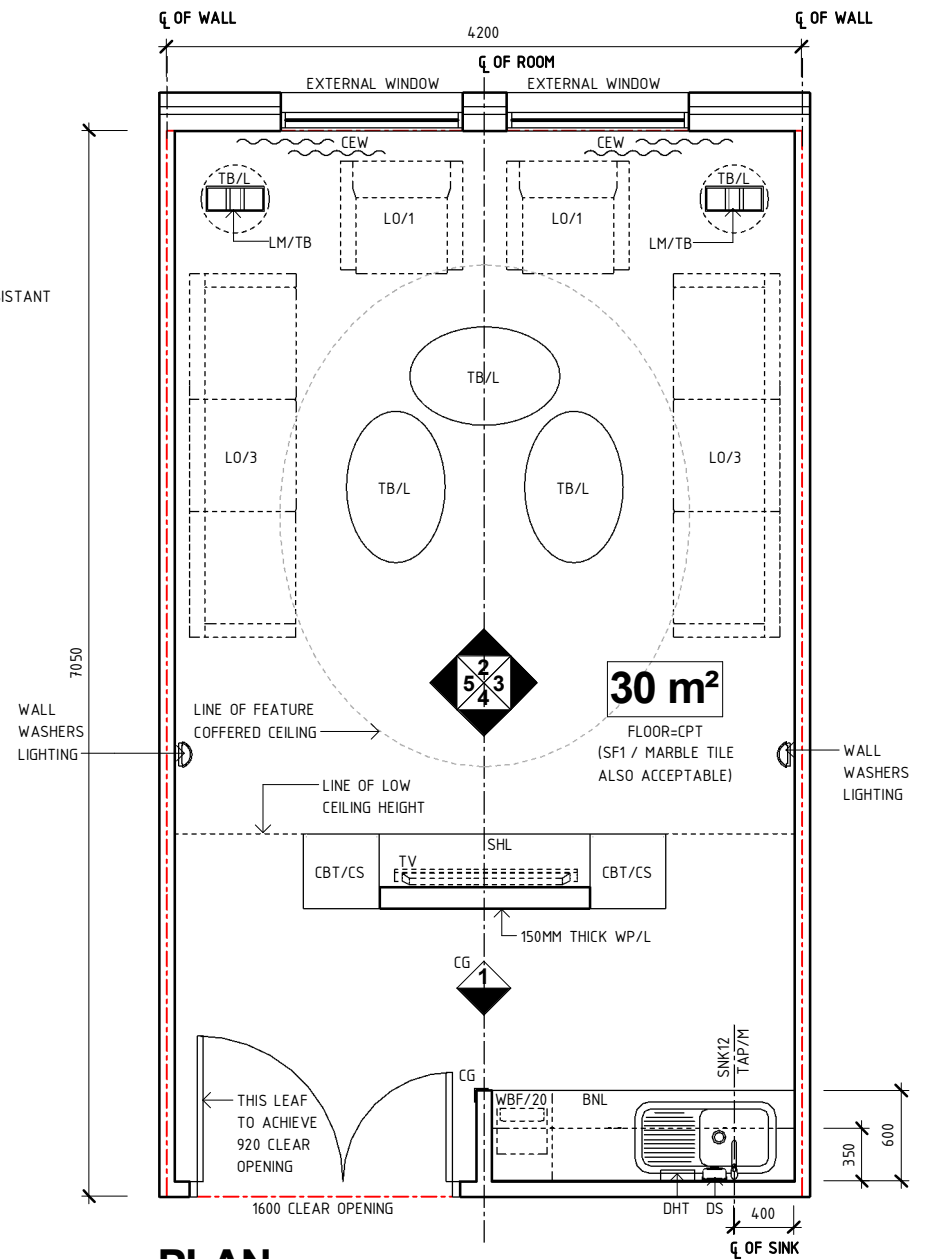
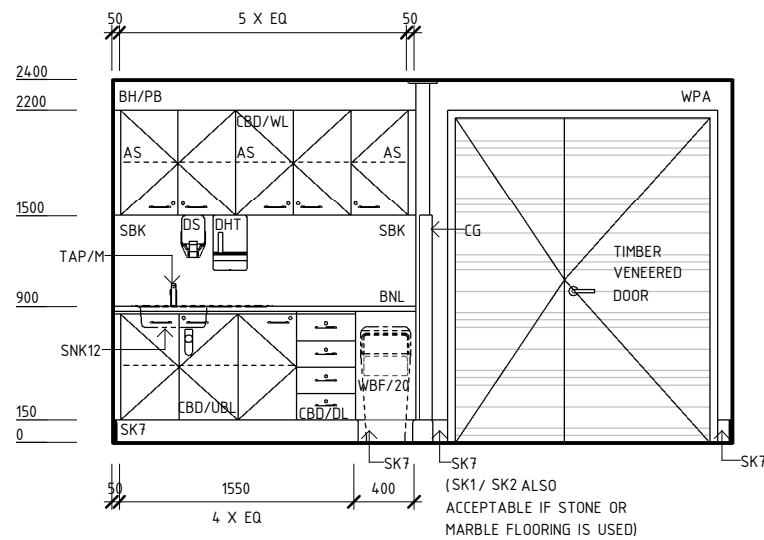
maj-30-i

RDS Room Code

maj-30-i

- AS ADJUSTABLE SHELF
- AW ARTWORK
- BH/LM BULKHEAD - LAMINATED
- BH/PB BULKHEAD - PLASTERBOARD, PAINT FINISH
- BLVI BLIND - VENETIAN, INTEGRAL
- BNL BENCH - LAMINATE
- BRCTVW BRACKET - TELEVISION, WALL MOUNTED
- CBD/DL CUPBOARD - DRAWER UNIT, LOCKABLE
- CBD/UBL CUPBOARD - UNDER BENCH, LOCKABLE
- CBD/WL CUPBOARD - WALL MOUNTED, LOCKABLE
- CBT/CS CABINET - COAT/SHOES VALET
- CBT/SER CABINET - SERVER, OPERATING THEATRE INTEGRATION
- CEW CURTAIN - EXTERNAL WINDOW
- CG CORNER GUARD
- COM/2 COMMUNICATION OUTLET - DOUBLE
- COM/IPTV COMMUNICATION OUTLET - INTERNET PROTOCOL TELEVISION
- CPT CARPET
- DHT DISPENSER - PAPER HAND TOWEL
- DS DISPENSER - SOAP
- L/SD LIGHT - SPECIAL, DECORATIVE

- LM/TB LAMP - TABLE
- LO/1 LOUNGE - 1 SEAT
- LO/3 LOUNGE - 3 SEAT
- LS/DL LIGHT SWITCH - DECORATIVE LIGHTING
- LS/R LIGHT SWITCH - ROOM
- PO/1 POWER OUTLET - SINGLE
- PO/2 POWER OUTLET - DOUBLE
- PO/C POWER OUTLET - CLEANER'S
- SBK SPLASHBACK
- SF1 STONE FLOORING, STANDARD SLIP RESISTANT
- SHL SHELF - LAMINATED
- SK1 MDF SKIRTING
- SK2 STONE SKIRTING
- SK7 TIMBER SKIRTING
- SNK12 SINK WITH DRAINER - SINGLE
- TAP/M TAPWARE - MIXER
- TB/L TABLE - LOW
- TV TELEVISION
- WBF/20 WASTE BIN - FLIPTOP, 20L
- WP/L WALL PANEL, LAMINATE
- WPA WALL PAPER



REV	DESCRIPTION	DATE	BY	REV	DESCRIPTION	DATE	BY	COMPATIBILITY
1	FIRST ISSUE	27.01.23	AM					iHFG

# iHFG Standard Components

## Room Layout Sheet

Room Name **Majlis**

RLS Room Code

maj-30-i

RDS Room Code

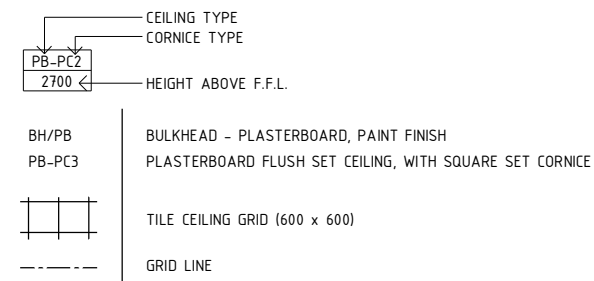
maj-30-i

### GENERAL NOTES:

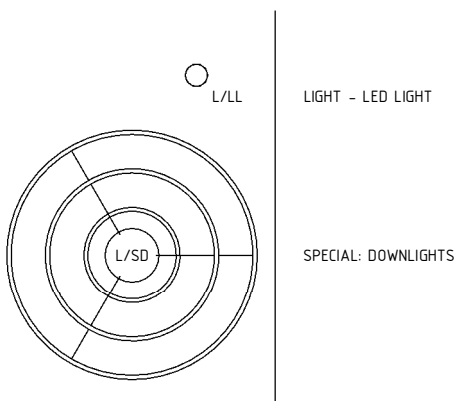
THIS DRAWING TO BE READ IN CONJUNCTION WITH R.D.S. (ROOM DATA SHEETS) WHICH TAKES PRECEDENCE.

ALL SERVICES INDICATED ARE INDICATIVE AND SUBJECTED TO DETAILED PROJECT SPECIFIC ENGINEERING DESIGN.

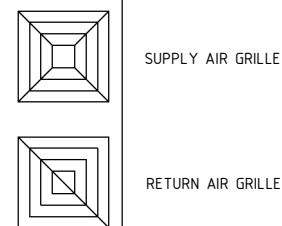
### CEILING LEGEND:



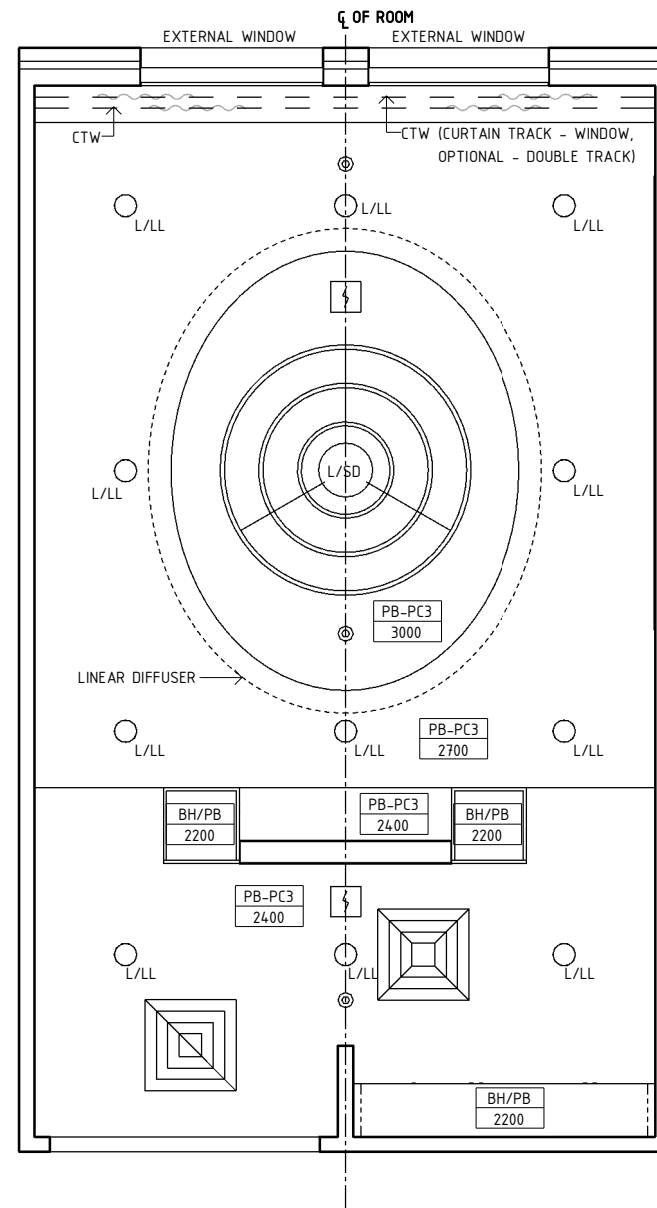
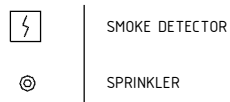
### ELECTRICAL LEGEND:



### MECHANICAL LEGEND:



### FIRE SERVICES LEGEND:



**REFLECTED CEILING PLAN**

REV	DESCRIPTION	DATE	BY	REV	DESCRIPTION	DATE	BY	COMPATIBILITY
1	FIRST ISSUE	27.01.23	AM					iHFG

# iHFG Standard Components

Room Layout Sheet

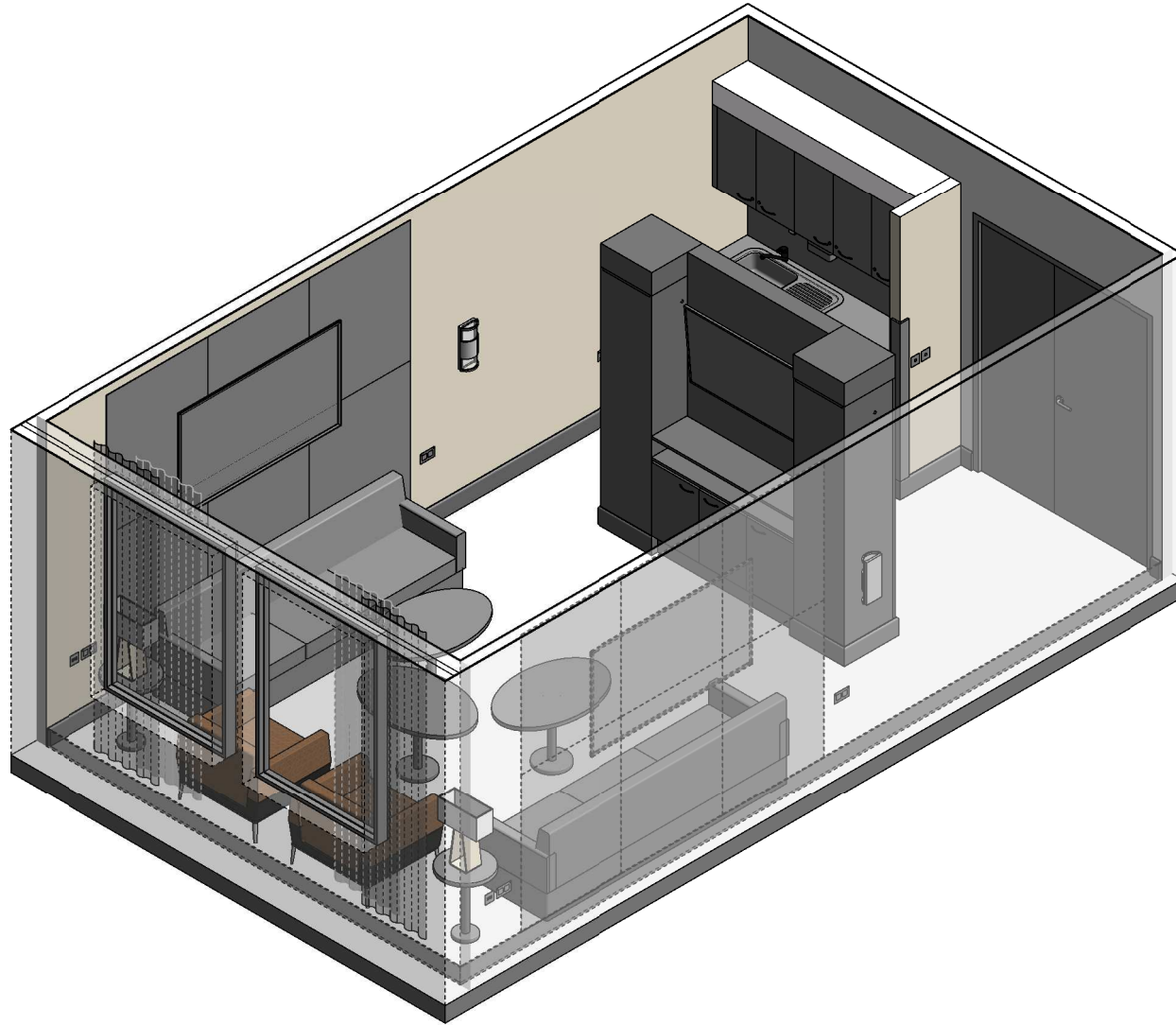
Room Name | **Majlis**

RLS Room Code

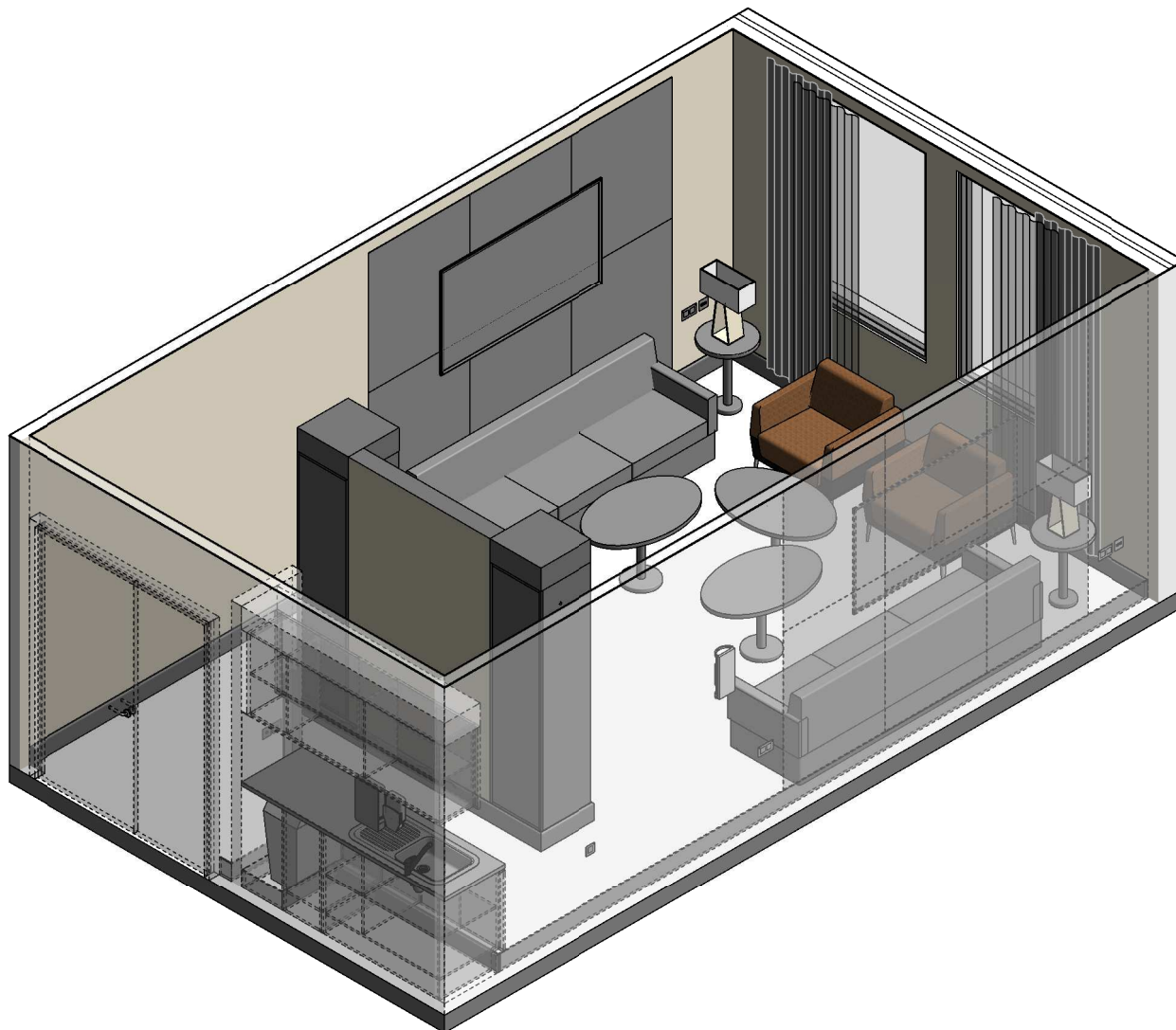
**maj-30-i**

RDS Room Code

maj-30-i



**ISOMETRIC VIEW 1**



**ISOMETRIC VIEW 2**

REV	DESCRIPTION	DATE	BY	REV	DESCRIPTION	DATE	BY	COMPATIBILITY																				
1	FIRST ISSUE	27.01.23	AM					iHFG																				
								<table border="1"> <thead> <tr> <th>DESIGNED</th> <th>APPROVED</th> <th>DATE</th> <th>SCALE(S)</th> <th>SHEET</th> </tr> </thead> <tbody> <tr> <td>AM</td> <td>SA</td> <td>27.01.23</td> <td></td> <td>3 OF 3</td> </tr> <tr> <td colspan="2">REVIT FILE NAME</td> <td colspan="2">PAPER DRAWING ID</td> <td>ISSUE</td> </tr> <tr> <td colspan="2">maj-30-i</td> <td colspan="2">maj-30-i-3</td> <td>1</td> </tr> </tbody> </table>	DESIGNED	APPROVED	DATE	SCALE(S)	SHEET	AM	SA	27.01.23		3 OF 3	REVIT FILE NAME		PAPER DRAWING ID		ISSUE	maj-30-i		maj-30-i-3		1
DESIGNED	APPROVED	DATE	SCALE(S)	SHEET																								
AM	SA	27.01.23		3 OF 3																								
REVIT FILE NAME		PAPER DRAWING ID		ISSUE																								
maj-30-i		maj-30-i-3		1																								