

# iHFG Standard Components

## Room Layout Sheet

RLS Room Code

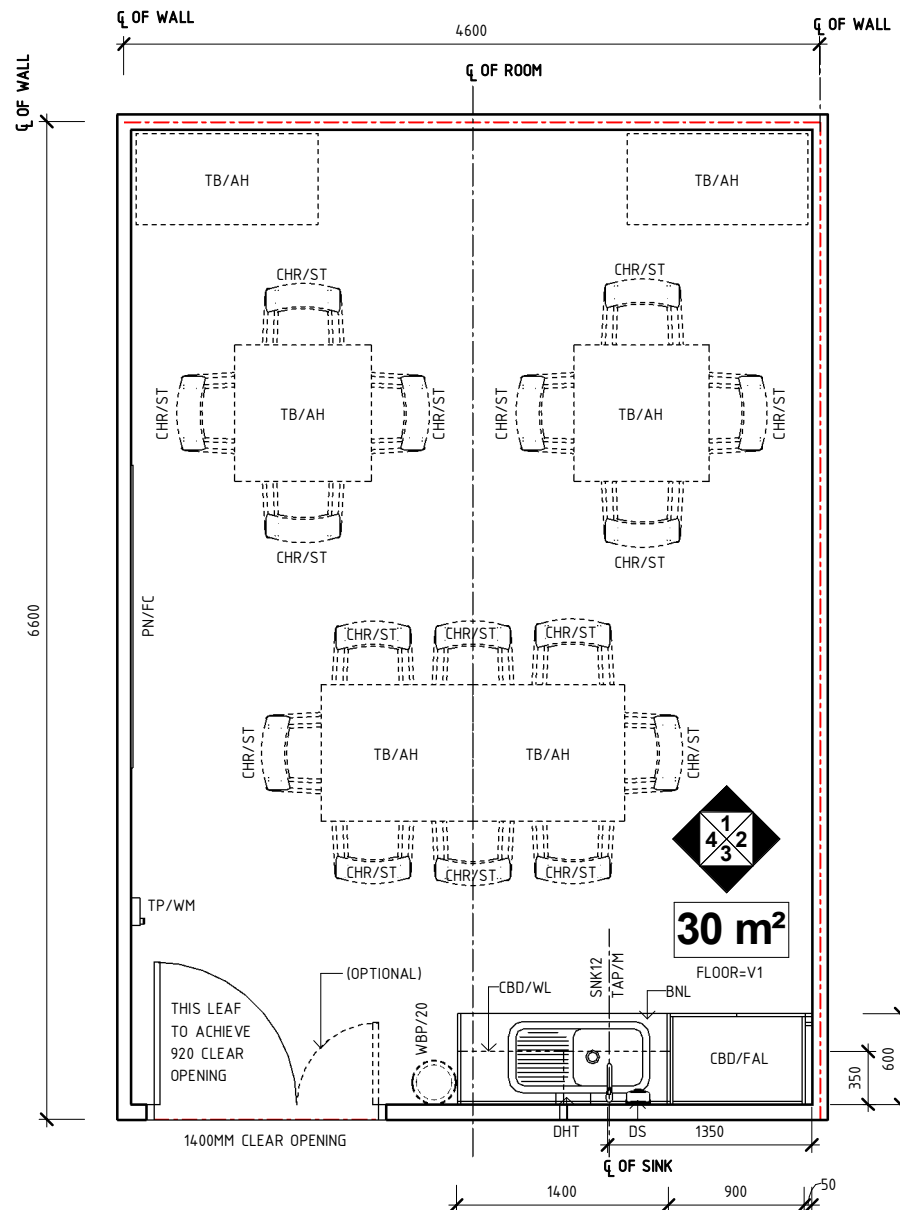
meet-dt-i

RDS Room Code

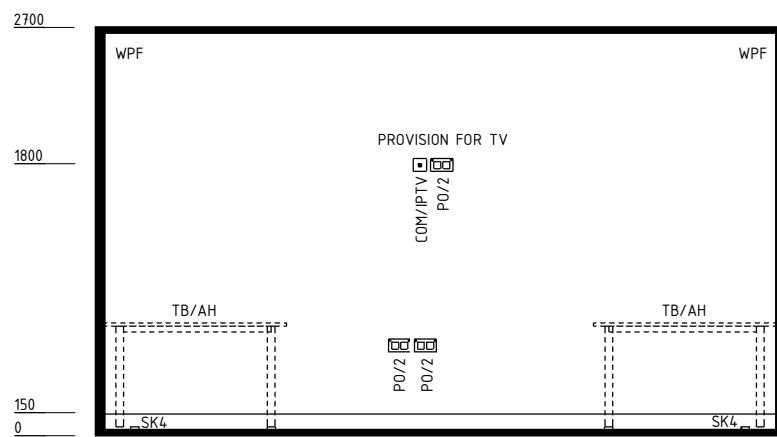
meet-dt-i

Room Name Meeting Room - Diversional Therapy

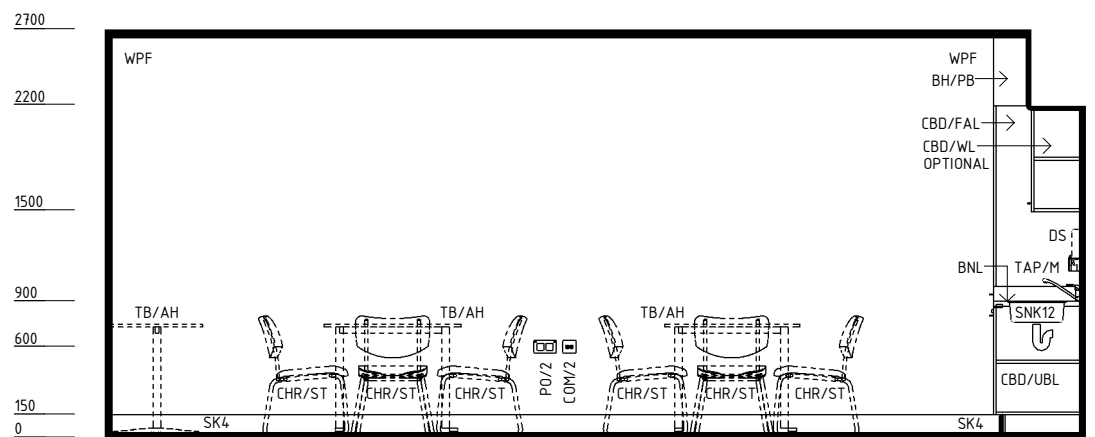
AS	ADJUSTABLE SHELF
BH/PB	BULKHEAD - PLASTERBOARD, PAINT FINISH
BNL	BENCH - LAMINATE
CBD/FAL	CUPBOARD - FULL HEIGHT, ADJUSTABLE SHELVES, LOCKABLE
CBD/UBL	CUPBOARD - UNDER BENCH, LOCKABLE
CBD/WL	CUPBOARD - WALL MOUNTED, LOCKABLE
CHR/ST	CHAIR - STACKABLE
COM/1	COMMUNICATION OUTLET - SINGLE
COM/2	COMMUNICATION OUTLET - DOUBLE
COM/IPTV	COMMUNICATION OUTLET - INTERNET PROTOCOL TELEVISION
DHT	DISPENSER - PAPER HAND TOWEL
DS	DISPENSER - SOAP
KP	KICKPLATE
LS/DD	LIGHT SWITCH - DOWNLIGHT DIMMER
LS/R	LIGHT SWITCH - ROOM
OP	OBSERVATION PANEL
PN/FC	PINBOARD - FABRIC COVERED
PO/2	POWER OUTLET - DOUBLE
PO/C	POWER OUTLET - CLEANER'S
PT	PLASTER TRAP
SBK	SPLASHBACK
SK4	FLOOR VINYL COVERED SKIRTING
SNK12	SINK WITH DRAINER - SINGLE
TAP/M	TAPWARE - MIXER
TB/AH	TABLE - ADJUSTABLE HEIGHT
TP/WM	TELEPHONE - WALL MOUNTED
V1	VINYL FLOORING, STANDARD SLIP RESISTANT
WBP/20	WASTE BIN - PAPER, 20 LITRE
WPF	WALL PAINT FINISH



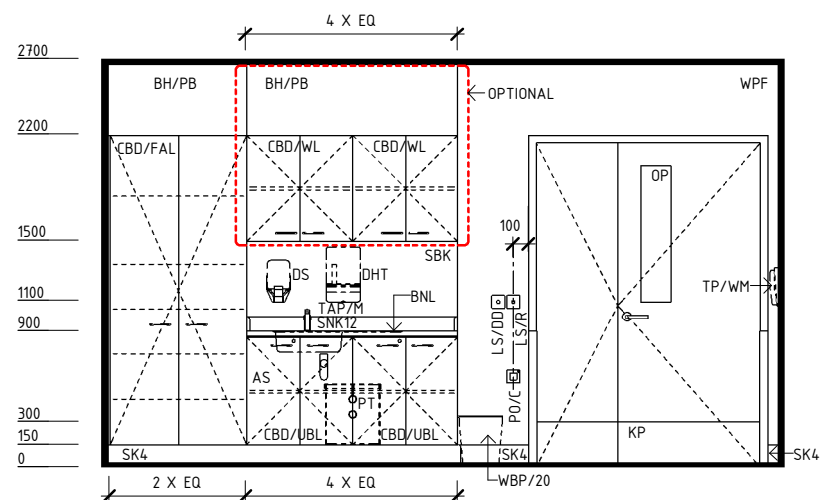
PLAN



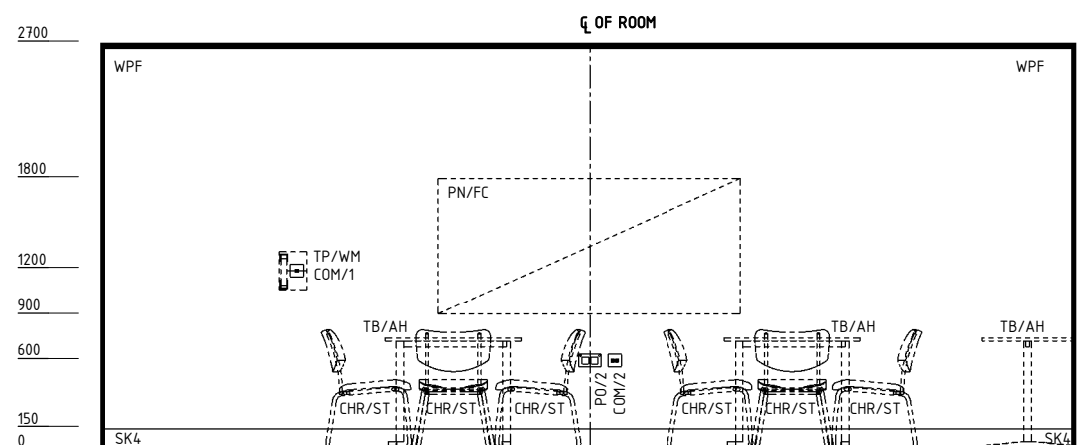
ELEVATION 1



ELEVATION 2



ELEVATION 3



ELEVATION 4

REV	DESCRIPTION	DATE	BY	REV	DESCRIPTION	DATE	BY	COMPATIBILITY
1	FIRST ISSUE	24.10.10	LL	4	GENERAL REVISION	25.05.23	AM	iHFG
2	GENERAL REVISION	30.08.11	ASD					
3	GENERAL REVISION	31.10.12	KC					



International Health Facility Guidelines at:  
[www.healthdesign.com.au/iHFG](http://www.healthdesign.com.au/iHFG)  
 Editable version of Standard Components on  
 Health Facility Briefing System (HFBS) at:  
[www.healthdesign.com.au](http://www.healthdesign.com.au) ©TAHPI



DESIGNED	APPROVED	DATE	SCALE(S)	SHEET
AM	SA	25.05.23	1 : 50	1 OF 3
REVIT FILE NAME		PAPER DRAWING ID		ISSUE
meet-dt-i		meet-dt-i-1		4

# iHFG Standard Components

## Room Layout Sheet

RLS Room Code

meet-dt-i

RDS Room Code

meet-dt-i

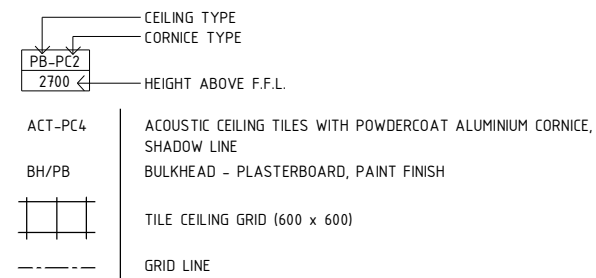
Room Name Meeting Room - Diversional Therapy

### GENERAL NOTES:

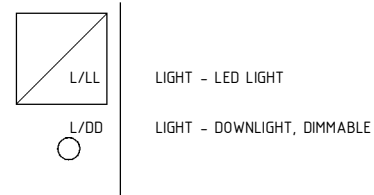
THIS DRAWING TO BE READ IN CONJUNCTION WITH R.D.S. (ROOM DATA SHEETS) WHICH TAKES PRECEDENCE.

ALL SERVICES INDICATED ARE INDICATIVE AND SUBJECTED TO DETAILED PROJECT SPECIFIC ENGINEERING DESIGN.

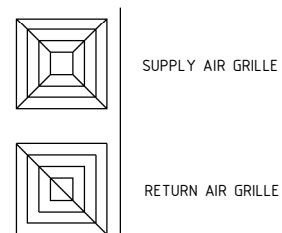
### CEILING LEGEND:



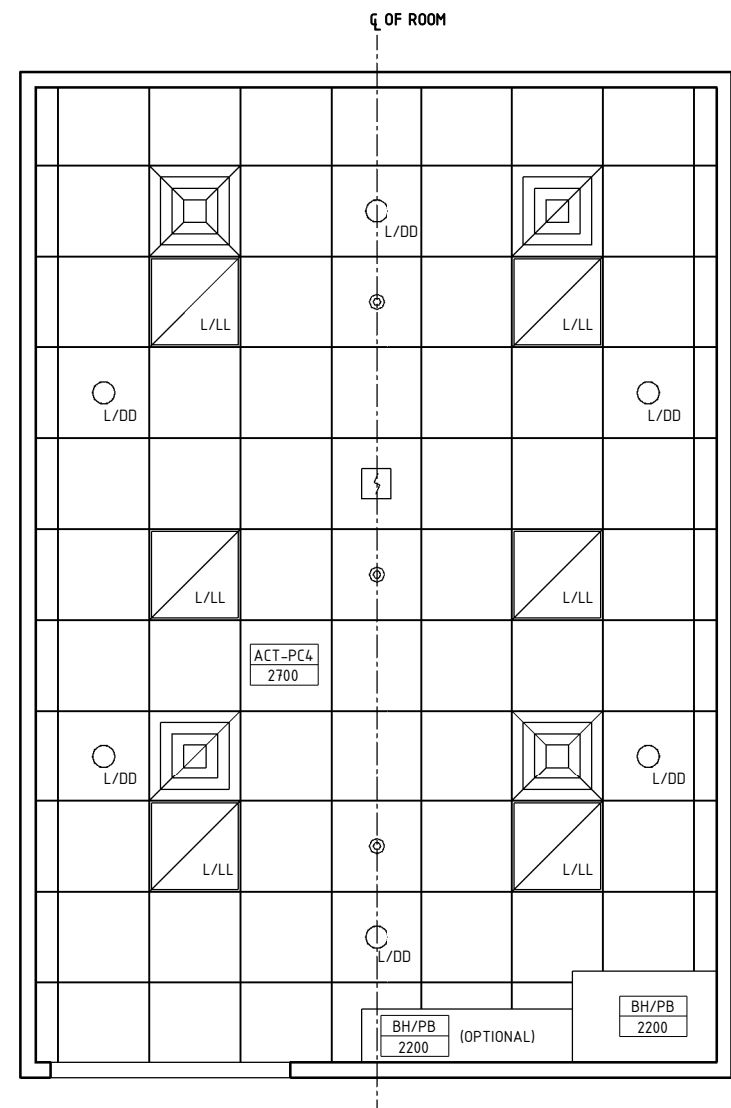
### ELECTRICAL LEGEND:



### MECHANICAL LEGEND:



### FIRE SERVICES LEGEND:



REFLECTED CEILING PLAN

REV	DESCRIPTION	DATE	BY	REV	DESCRIPTION	DATE	BY	COMPATIBILITY																				
1	FIRST ISSUE	24.10.10	LL	4	GENERAL REVISION	25.05.23	AM	iHFG																				
2	GENERAL REVISION	30.08.11	ASD																									
3	GENERAL REVISION	31.10.12	KC																									
<table border="1"> <thead> <tr> <th>DESIGNED</th> <th>APPROVED</th> <th>DATE</th> <th>SCALE(S)</th> <th>SHEET</th> </tr> </thead> <tbody> <tr> <td>AM</td> <td>SA</td> <td>25.05.23</td> <td>1 : 50</td> <td>2 OF 3</td> </tr> <tr> <td colspan="2">REVIT FILE NAME</td> <td colspan="2">PAPER DRAWING ID</td> <td>ISSUE</td> </tr> <tr> <td colspan="2">meet-dt-i</td> <td colspan="2">meet-dt-i-2</td> <td>4</td> </tr> </tbody> </table>								DESIGNED	APPROVED	DATE	SCALE(S)	SHEET	AM	SA	25.05.23	1 : 50	2 OF 3	REVIT FILE NAME		PAPER DRAWING ID		ISSUE	meet-dt-i		meet-dt-i-2		4	
DESIGNED	APPROVED	DATE	SCALE(S)	SHEET																								
AM	SA	25.05.23	1 : 50	2 OF 3																								
REVIT FILE NAME		PAPER DRAWING ID		ISSUE																								
meet-dt-i		meet-dt-i-2		4																								

# iHFG Standard Components

Room Layout Sheet

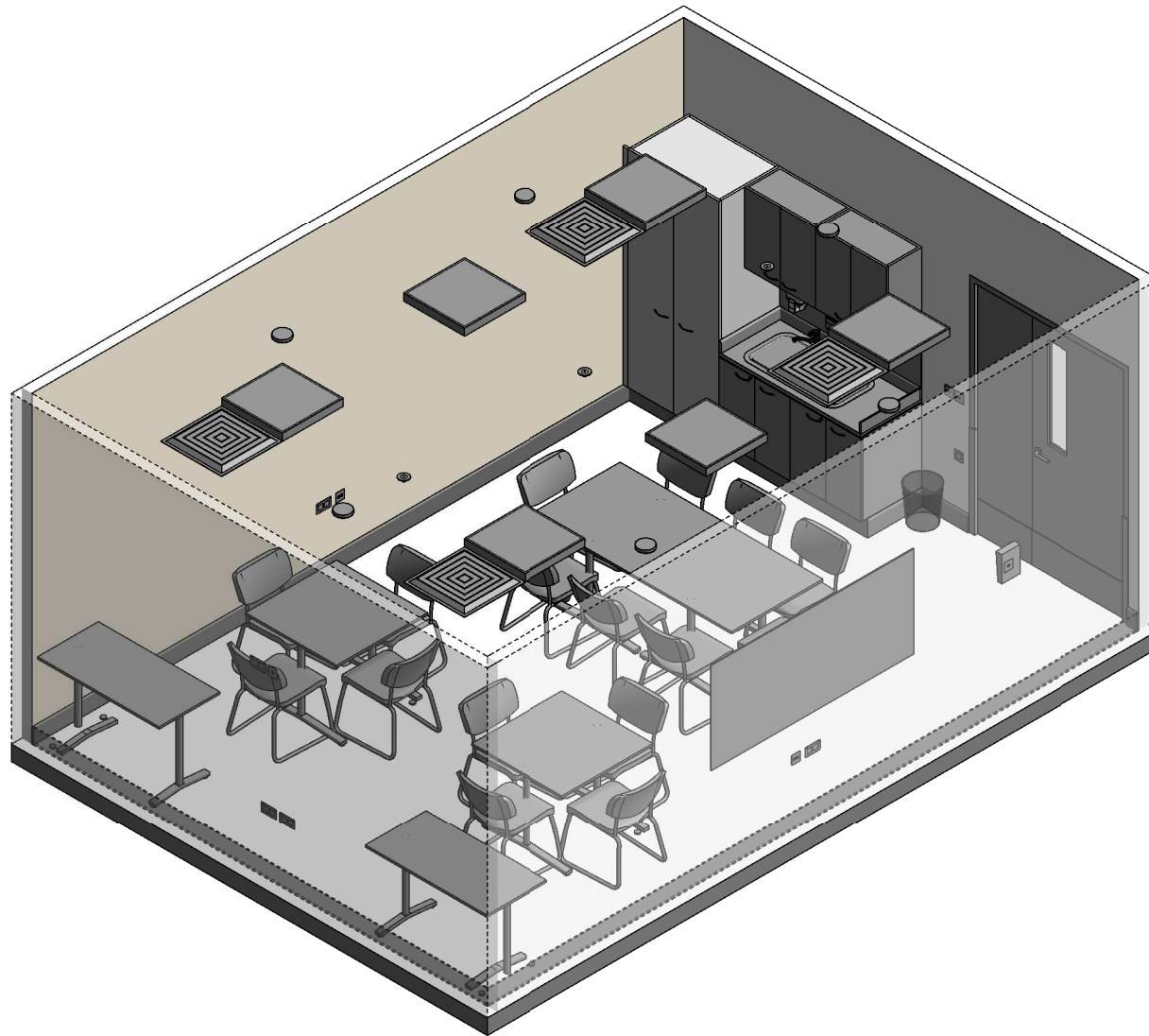
RLS Room Code

meet-dt-i

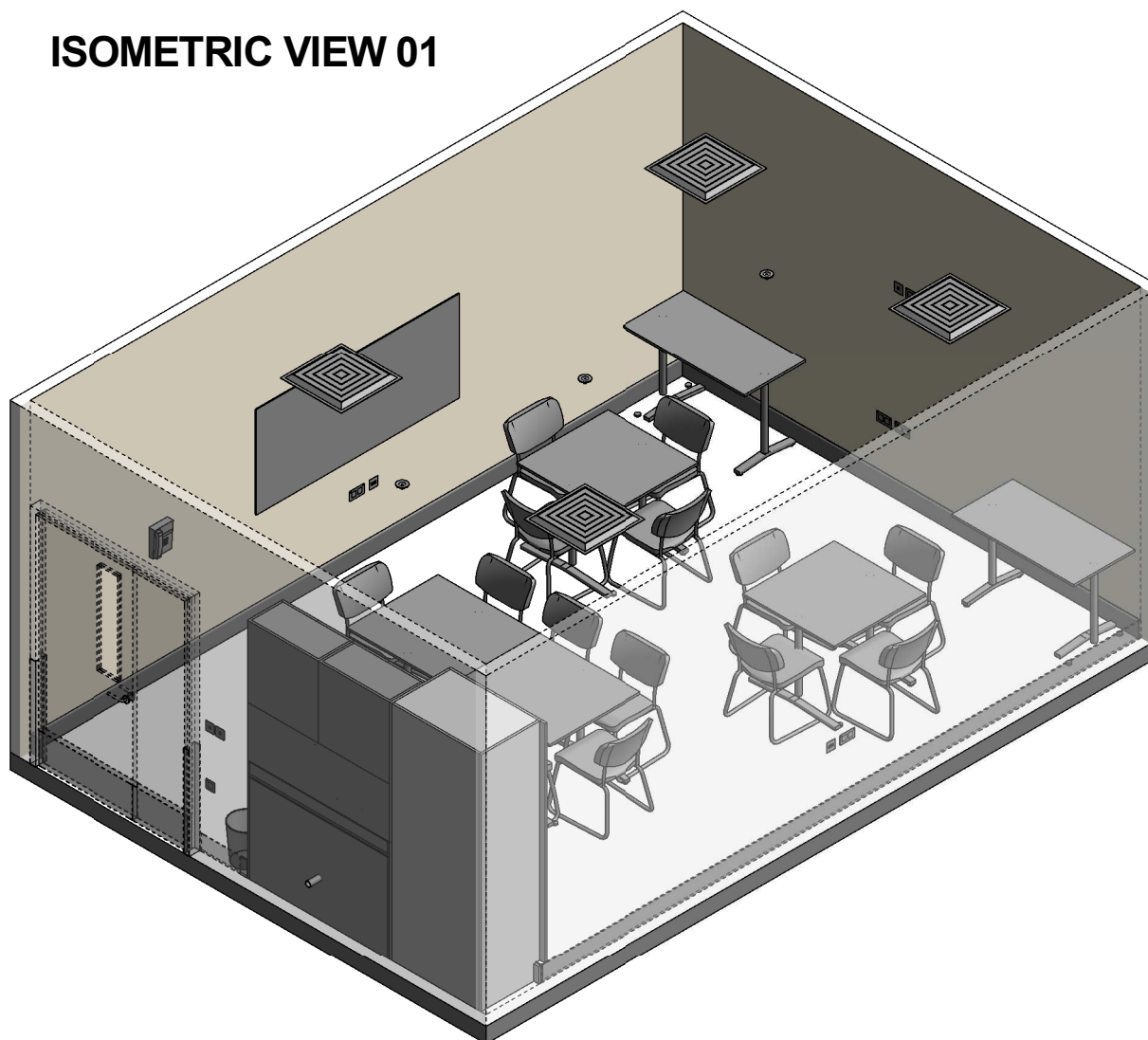
RDS Room Code

meet-dt-i

Room Name | Meeting Room - Diversional Therapy



**ISOMETRIC VIEW 01**



**ISOMETRIC VIEW 02**

REV	DESCRIPTION	DATE	BY	REV	DESCRIPTION	DATE	BY	COMPATIBILITY
1	FIRST ISSUE	24.10.10	LL	4	GENERAL REVISION	25.05.23	AM	iHFG
2	GENERAL REVISION	30.08.11	ASD					
3	GENERAL REVISION	31.10.12	KC					

DESIGNED	APPROVED	DATE	SCALE(S)	SHEET
AM	SA	25.05.23		3 OF 3
REVIT FILE NAME		PAPER DRAWING ID		ISSUE
meet-dt-i		meet-dt-i-3		4

**iHFG** International Health Facility Guidelines

International Health Facility Guidelines at: [www.healthdesign.com.au/iHFG](http://www.healthdesign.com.au/iHFG)  
 Editable version of Standard Components on Health Facility Briefing System (HFBS) at: [www.healthdesign.com.au](http://www.healthdesign.com.au) ©TAHPI



This document is for advisory purpose only