

iHFG Standard Components

Room Layout Sheet

Room Name

Mortuary - Clean-up Area

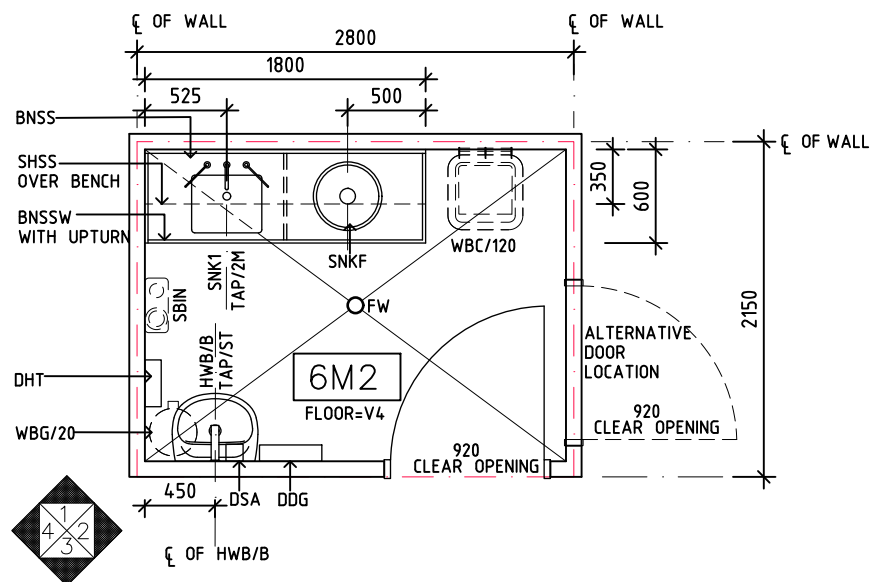
RLS Room Code

mor-cu-i

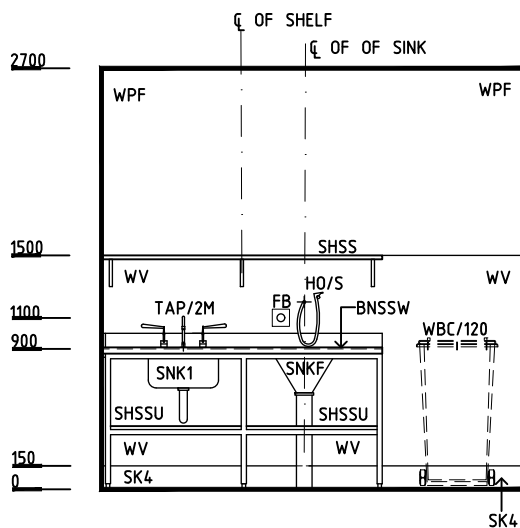
RDS Room Code

mor-cu-i

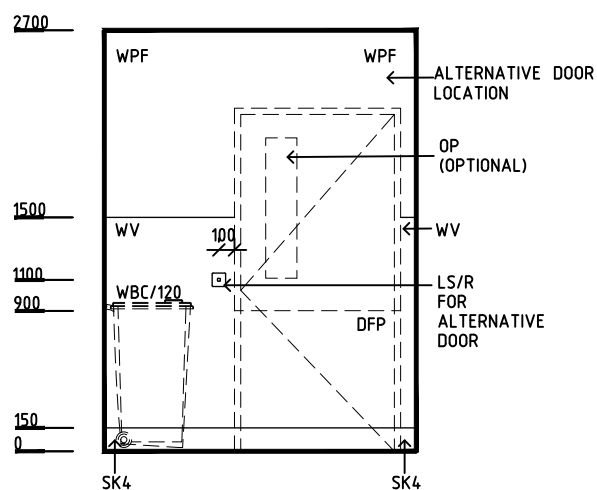
BNSSW	BENCH - STAINLESS STEEL, WET EDGE
BNSS	BENCH - STAINLESS STEEL
DDG	DISPENSER - DISPOSABLE GLOVE
DFP	DOOR AND FRAME PROTECTION
DHT	DISPENSER - HAND TOWEL
DSA	DISPENSER - SOAP ANTISEPTIC
FB	FLUSH BUTTON
FW	FLOOR WASTE
HO/S	HOSE - SPRAY
HWB/B	HANDWASH BASIN - TYPE 'B'
LS/R	LIGHT SWITCH - ROOM
PO/1	POWER OUTLET - SINGLE
SBIN	SHARPS BIN
BRCs	BRACKETS SHARPS
SHSS	SHELF - STAINLESS STEEL
SHSSU	SHELF - STAINLESS STEEL, UNDER BENCH
SK4	FLOOR VINYL COVERED SKIRTING
SNK1	SINK - 450x350x250D
SNKF	SINK - FLUSHING RIM
TAP/ST	TAPWARE - SENSOR TAP
TAP/2M	TAPWARE - DUAL MIXTURE
V4	VINYL FLOORING - NON SLIP, SAFETY
WBC/120	WASTE BIN - CLINICAL, 120 LITRS
WBG/20	WASTE BIN - GENERAL, 20 LITERS
WPF	WALL PAINT FINISH
WV	WALL VINYL



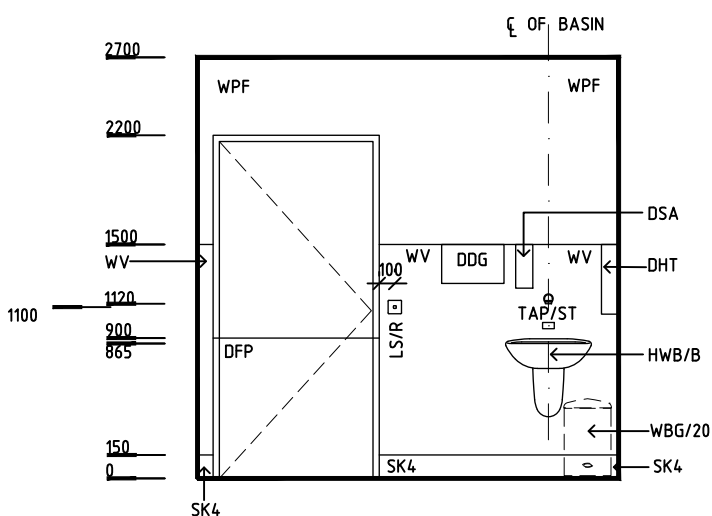
PLAN



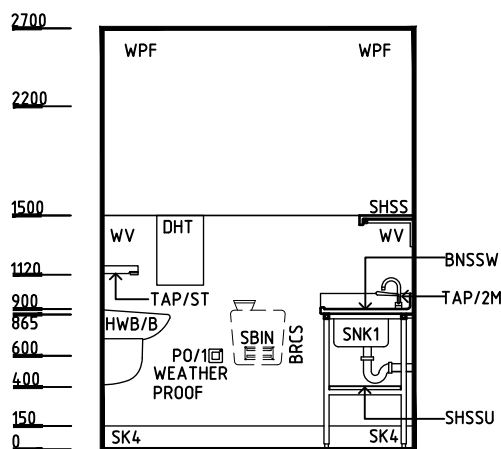
ELEVATION 1



ELEVATION 2



ELEVATION 3



ELEVATION 4

REV	DESCRIPTION	DATE	BY	REV	DESCRIPTION	DATE	BY	COMPATIBILITY
1	FIRST ISSUE	24.10.10	LL	4	GENERAL REVISION	27.01.23	SS	iHFG
2	GENERAL REVISION	30.08.11	ASD					
3	GENERAL REVISION	31.10.12	KC					



International Health Facility Guidelines

International Health Facility Guidelines at:
www.healthdesign.com.au/iHFG
Editable version of Standard Components on
Health Facility Briefing System (HFBS) at:
www.healthdesign.com.au @TAHPI



DESIGNED	APPROVED	DATE	SCALE(S)	SHEET
SS	RH	27.01.23	1:50 in A3	1 of 2
CAD FILE NAME		PAPER DRAWING ID		ISSUE
mor-cu-i		mor-cu-i-1		4

iHFG Standard Components

Room Layout Sheet

Room Name **Mortuary - Clean-up Area**

RLS Room Code

mor-cu-i

RDS Room Code

mor-cu-i

GENERAL NOTES:

THIS DRAWING TO BE READ IN CONJUNCTION WITH R.D.S. (ROOM DATA SHEETS) WHICH TAKES PRECEDENCE.

ALL SERVICES INDICATED ARE INDICATIVE AND SUBJECTED TO DETAILED PROJECT SPECIFIC ENGINEERING DESIGN.

CEILING LEGEND:

- WPT | WATER RESISTANT PLASTERBOARD, DROP-IN-TILES
- PC 4 | ALUMINUM POWDER COATED ANGLE FLUSH AGAINST WALL, IN LINE WITH CEILING GRID
- | GRID LINE
- ||||| | TILE CEILING GRID (600 x 600)
- WPT | CEILING TYPE
2700 | HEIGHT ABOVE F.F.L.

ELECTRICAL LEGEND:

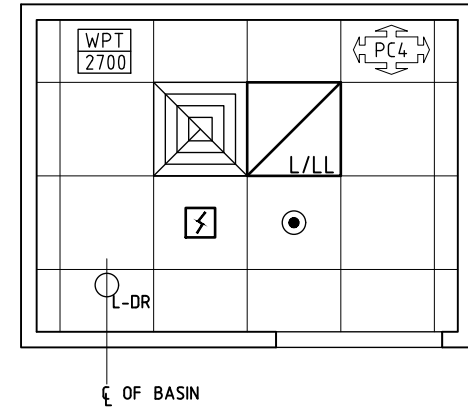
- L/LL | LIGHT - LED LIGHT
- L-DR | LIGHT - DOWNLIGHT, RECESSED

MECHANICAL LEGEND:

- EXHAUST GRILLE

FIRE SERVICES LEGEND:

- SMOKE DETECTOR
- SPRINKLER



REFLECTED CEILING PLAN

REV	DESCRIPTION	DATE	BY	REV	DESCRIPTION	DATE	BY	COMPATIBILITY
1	FIRST ISSUE	24.10.10	LL	4	GENERAL REVISION	27.01.23	SS	iHFG
2	GENERAL REVISION	30.08.11	ASD					
3	GENERAL REVISION	31.10.12	KC					

International Health Facility Guidelines	International Health Facility Guidelines at: www.healthdesign.com.au/iHFG Editable version of Standard Components on Health Facility Briefing System (HFBS) at: www.healthdesign.com.au/TAHPI		DESIGNED	APPROVED	DATE	SCALE(S)	SHEET
	SS		RH	27.01.23	1:50 in A3	2 of 2	
			CAD FILE NAME	PAPER DRAWING ID		ISSUE	
			mor-cu-i	mor-cu-i-2		4	