

iHFG Standard Components

Room Layout Sheet

Room Name **Office - Single Person, 9m2**

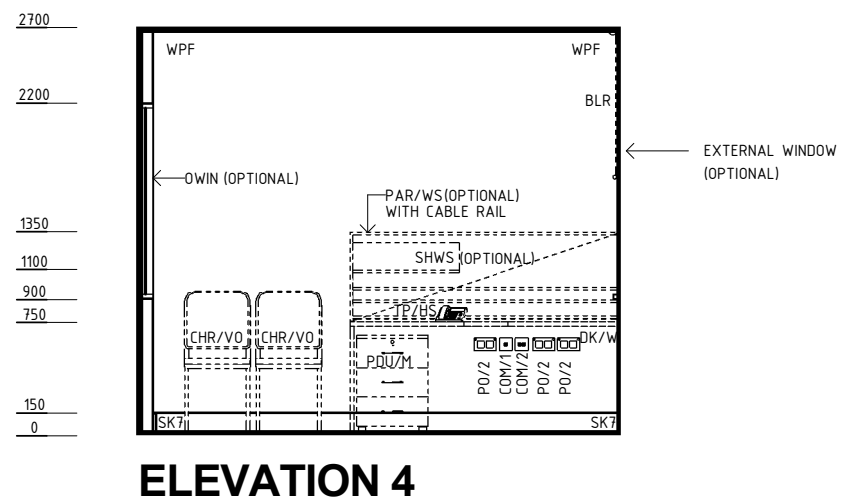
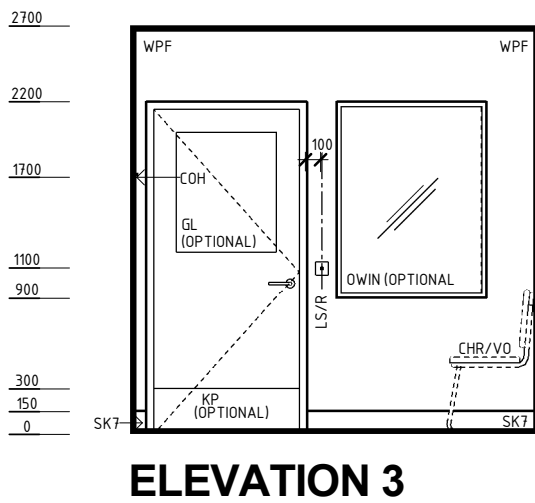
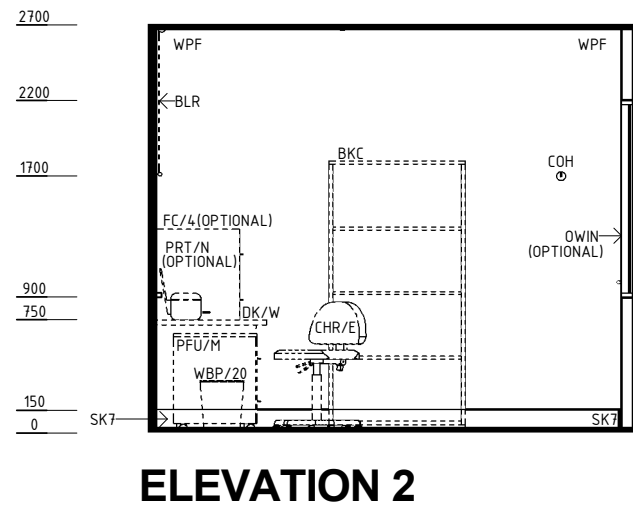
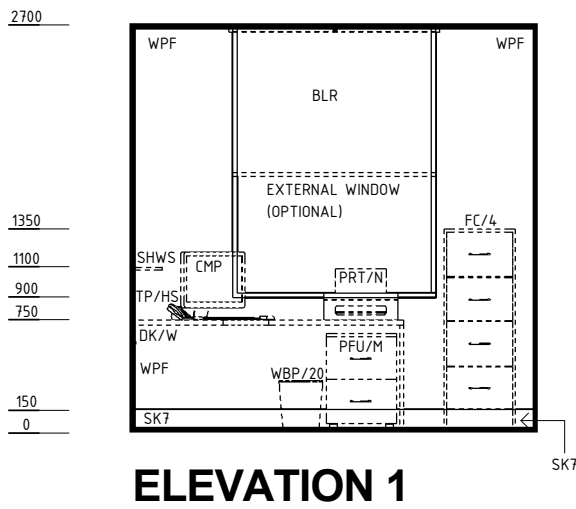
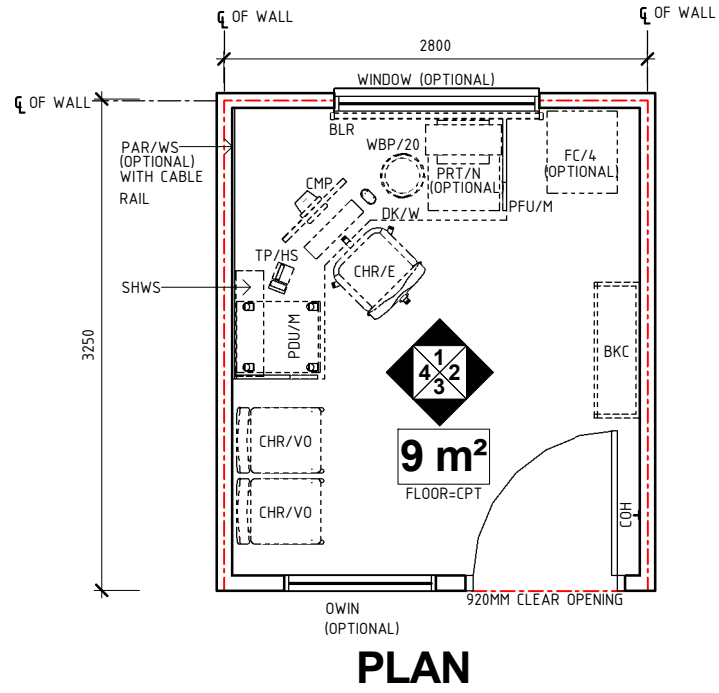
RLS Room Code

off-s9-i

RDS Room Code

off-s9-i

- BKC BOOKCASE
- BLR BLIND - ROLLER
- CHR/E CHAIR - ERGONOMIC, OFFICE
- CHR/VO CHAIR - VISITOR, OFFICE
- CMP COMPUTER
- COH COAT HOOK
- COM/1 COMMUNICATION OUTLET - SINGLE
- COM/2 COMMUNICATION OUTLET - DOUBLE
- CPT CARPET
- DK/W DESK - WITH COMPUTER WORKSTATION
- FC/4 FILING CABINET - 4 DRAWERS
- GL GLAZING
- KP KICKPLATE
- LS/R LIGHT SWITCH - ROOM
- OWIN OBSERVATION WINDOW
- PAR/WS PARTITIONS - WORKSTATION
- PDU/M PEDESTAL DRAWER UNIT - MOBILE
- PFU/M PEDESTAL FILING UNIT - MOBLE
- PO/2 POWER OUTLET - DOUBLE
- PRT/N PRINTER - NETWORKED
- SHWS WORKSTATION - SHELVING UNIT
- SK7 TIMBER SKIRTING
- TP/HS TELEPHONE - HANDSET, STANDARD
- WBP/20 WASTE BIN - PAPER, 20 LITRE
- WPF WALL PAINT FINISH



REV	DESCRIPTION	DATE	BY	REV	DESCRIPTION	DATE	BY	COMPATIBILITY
1	FIRST ISSUE	28.04.14	CT					
2	GENERAL REVISION	31.08.22	RA					



International Health Facility Guidelines at:
www.healthdesign.com.au/iHFG
 Editable version of Standard Components on
 Health Facility Briefing System (HFBS) at:
www.healthdesign.com.au ©TAHPI



DESIGNED	APPROVED	DATE	SCALE(S)	SHEET
RA	RH	31.08.22	1 : 50	1 OF 2
REVIT FILE NAME		PAPER DRAWING ID		ISSUE
off-s9-i		off-s9-i-1		2

iHFG Standard Components

Room Layout Sheet

RLS Room Code

off-s9-i

RDS Room Code

off-s9-i

Room Name

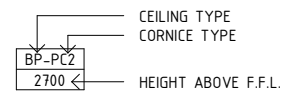
Office - Single Person, 9m2

GENERAL NOTES:

THIS DRAWING TO BE READ IN CONJUNCTION WITH R.D.S. (ROOM DATA SHEETS) WHICH TAKES PRECEDENCE.

ALL SERVICES INDICATED ARE INDICATIVE AND SUBJECTED TO DETAILED PROJECT SPECIFIC ENGINEERING DESIGN.

CEILING LEGEND:



ACT-PC4 ACOUSTIC CEILING TILES WITH POWDERCOAT ALUMINIUM CORNICE, SHADOW ANGLE



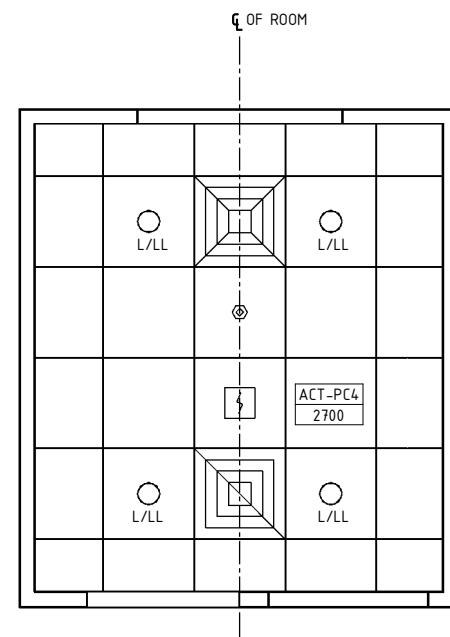
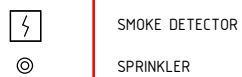
ELECTRICAL LEGEND:



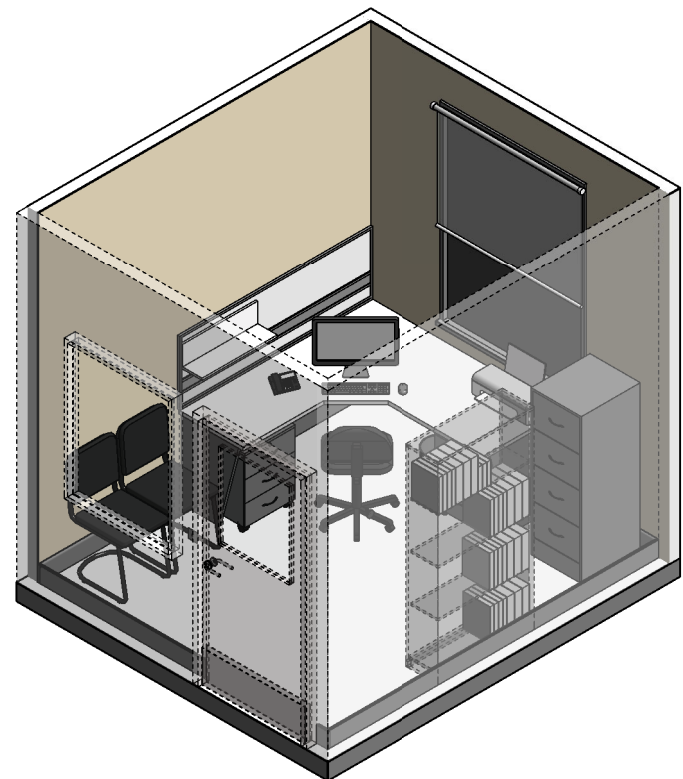
MECHANICAL LEGEND:



FIRE SERVICES LEGEND:



REFLECTED CEILING PLAN



ISOMETRIC VIEW 01

REV	DESCRIPTION	DATE	BY	REV	DESCRIPTION	DATE	BY	COMPATIBILITY
1	FIRST ISSUE	28.04.14	CT					
2	GENERAL REVISION	31.08.22	RA					iHFG