

iHFG Standard Components

Room Layout Sheet

RLS Room Code

off-ws3-i

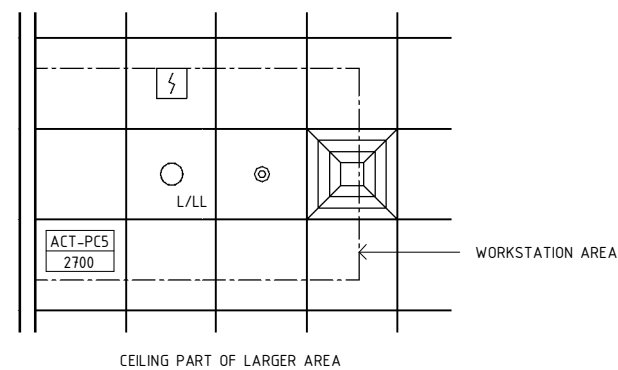
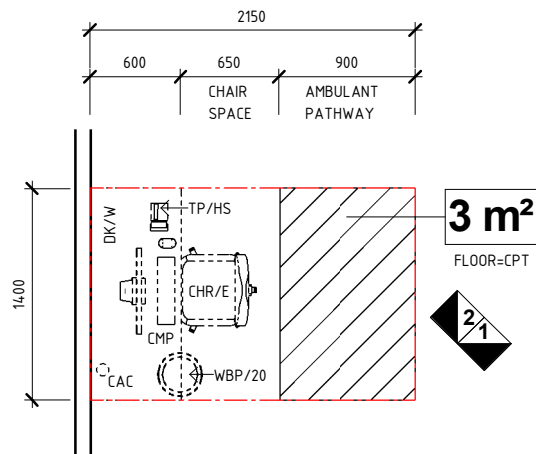
RDS Room Code

off-ws3-i

Room Name

Office - Workstation - Shared, 3m²

- CAC CABLE ACCESS CAP
- CHR/E CHAIR - ERGONOMIC, OFFICE
- CMP COMPUTER
- COM/2 COMMUNICATION OUTLET - DOUBLE
- CPT CARPET
- DK/W DESK - WITH COMPUTER WORKSTATION
- PO/2 POWER OUTLET - DOUBLE
- SK7 TIMBER SKIRTING
- TP/HS TELEPHONE - HANDSET, STANDARD
- WBP/20 WASTE BIN - PAPER, 20 LITRE
- WPF WALL PAINT FINISH

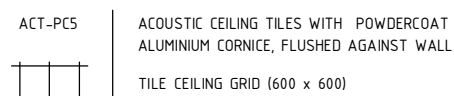
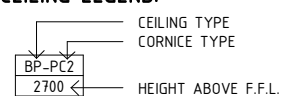


GENERAL NOTES:

THIS DRAWING TO BE READ IN CONJUNCTION WITH R.D.S. (ROOM DATA SHEETS) WHICH TAKES PRECEDENCE.

ALL SERVICES INDICATED ARE INDICATIVE AND SUBJECTED TO DETAILED PROJECT SPECIFIC ENGINEERING DESIGN.

CEILING LEGEND:



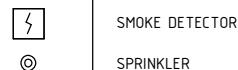
ELECTRICAL LEGEND:



MECHANICAL LEGEND:

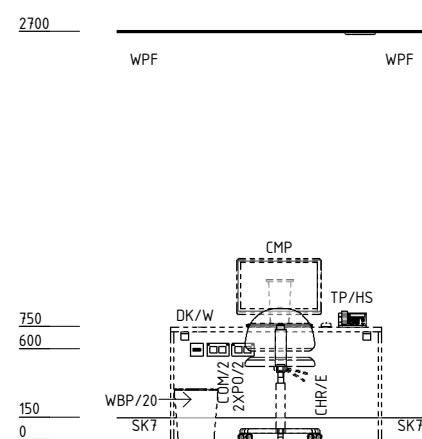
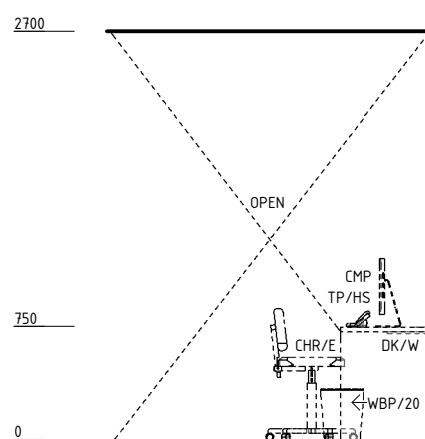


FIRE SERVICES LEGEND:



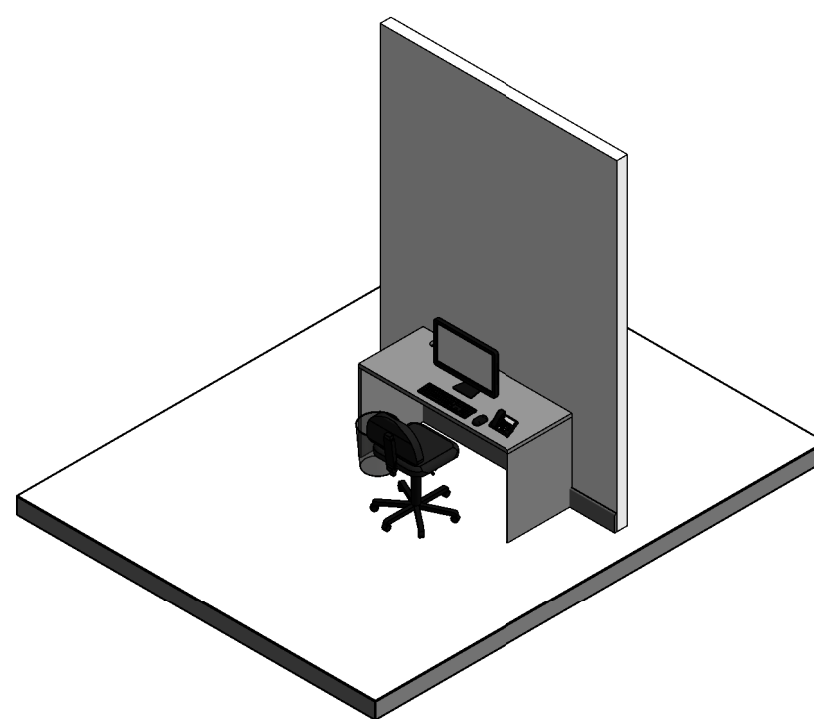
PLAN

REFLECTED CEILING PLAN



ELEVATION 1

ELEVATION 2



ISOMETRIC VIEW 01

REV	DESCRIPTION	DATE	BY	REV	DESCRIPTION	DATE	BY	COMPATIBILITY
1	FIRST ISSUE	25.05.23	AM					iHFG



International Health Facility Guidelines at:
www.healthdesign.com.au/iHFG
Editable version of Standard Components on
Health Facility Briefing System (HFBS) at:
www.healthdesign.com.au ©TAHPI



DESIGNED	APPROVED	DATE	SCALE(S)	SHEET
AM	SA	25.05.23	1 : 50	1 OF 1
REVIT FILE NAME		PAPER DRAWING ID		ISSUE
off-ws3-i		off-ws3-i-1		1

This document is for advisory purpose only