

iHFG Standard Components

Room Layout Sheet

RLS Room Code

or-ca-i

Room Name

Operating Room - Cardiac

RDS Room Code

or-ca-i

ANMM	ANAESTHETIC - MACHINE WITH ANAESTHETIC MONITOR
AV	AUDIO VISUAL OUTLET
AV/DC	AUDIO VISUAL OUTLET - DIRECT CONNECTION
BNR	BENCH - RESINATE
BRCCM	BRACKET - CARDIAC MONITOR
BS1	BOWL STAND - SINGLE
CARP	CARDIAC PROTECTED
CBT/BFW	CABINET - BLANKET/ FLUID WARMING
CBT/SER	CABINET - SERVER, OPERATING THEATRE INTEGRATION
CBT/STO	CABINET - STORAGE, OPERATING THEATRE INSTRUMENT
CHR/A	CHAIR - ANAESTHETIST
CMP	COMPUTER
COM/1	COMMUNICATION OUTLET - SINGLE
COM/2	COMMUNICATION OUTLET - DOUBLE
COM/DC	COMMUNICATION OUTLET - DIRECT CONNECTION
CONP/SR	CONTROL PANEL - SURGICAL, RECESSED
DCE	DIRECT CONNECTION - EMERGENCY POWER SUPPLY
DCU/1	DIRECT CONNECTION - UNINTERRUPTED POWER SUPPLY, SINGLE
DDG	DISPENSER - DISPOSABLE GLOVES
DFP	DOOR AND DOOR FRAME PROTECTION
DFR	DEFIBRILLATOR
EC	EMERGENCY CALL
ESU	ELECTRO SURGICAL UNIT
HHU	HYPOTHYROIDISM UNIT
IM/USU	IMAGING - ULTRASOUND SCANNING UNIT
IVS	IV STAND - MOBILE
KB	KICKBUCKET & STAND
L/CCD	LIGHT - COLOUR CORRECTED, DIMMABLE
L/LA	LIGHT - 'LASER IN USE'
L/O2M	LIGHT - OPERATING, 2-ARM, 1 LIGHT / 1 MONITOR
L/O3CM2	LIGHT - OPERATING, 3-ARM, 1 LIGHT WITH CAMERA / 2 MONITORS
LIND/S	LINEN CARRIER - DIRTY, SINGLE
MA	MEDICAL AIR
MON/C	MONITOR - CARDIAC
MON/D	MONITOR - DISPLAY
MON/TS	MONITOR - TOUCH SCREEN
N2O	NITROUS OXIDE
O2	OXYGEN
OPC	ORDERLY/ PORTER CALL
OPS/R	OBSERVATION PANEL WITH SLIDING PANEL - RADIATION SHIELDING
OPV	OBSERVATION PANEL WITH INTEGRAL VENETIAN BLINDS
OTA/M	OPERATING TABLE - MOBILE, ELECTRIC
PC2	PLASTERBOARD CORNICE, FLUSHED COVERED
PO/1-32A	POWER OUTLET - SINGLE, 32 AMPS
PO/1I	ISOLATED POWER SUPPLY - SINGLE
PO/2E	POWER OUTLET - EMERGENCY, DOUBLE
PO/2U	UNINTERRUPTED POWER SUPPLY - DOUBLE

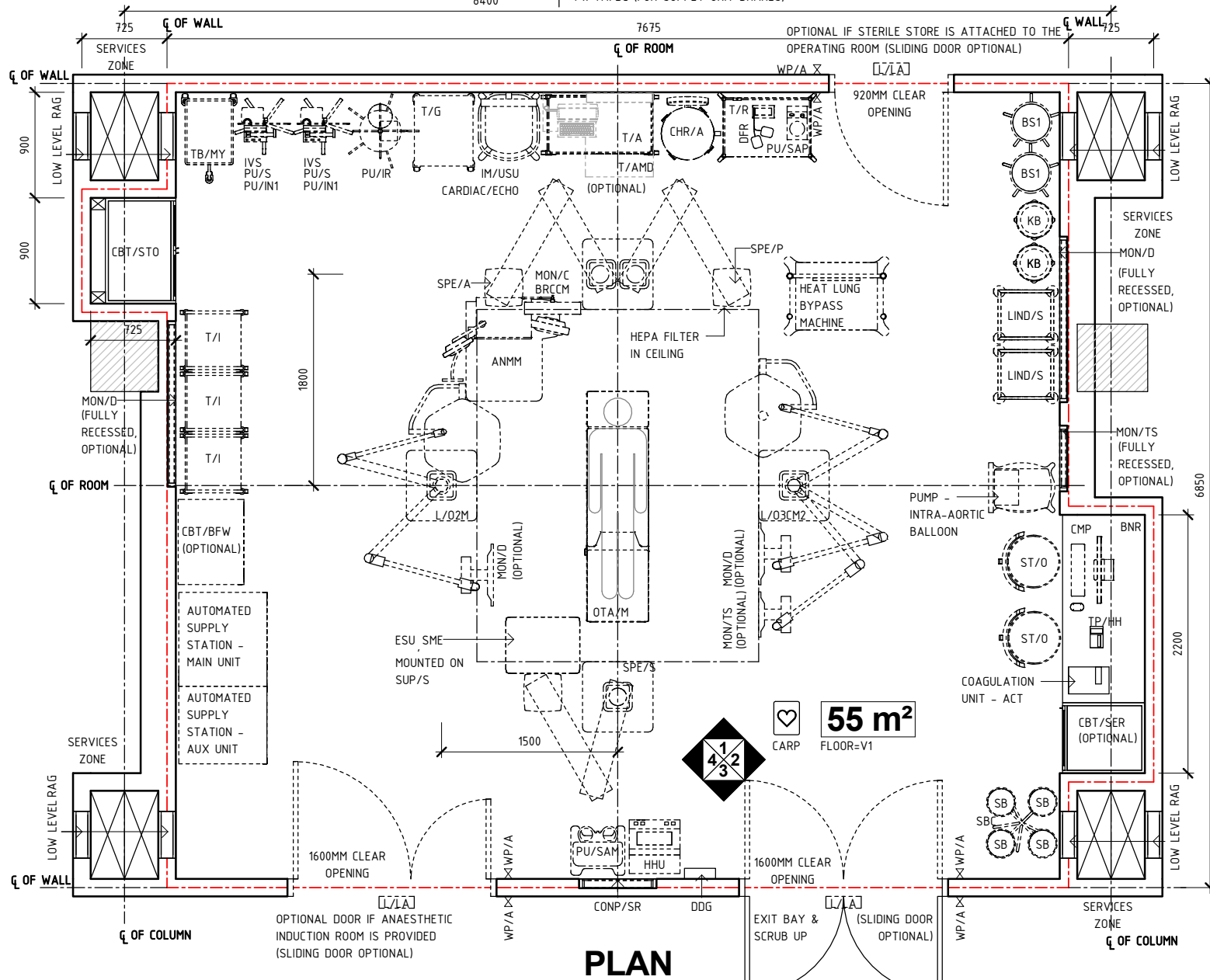
PO/C	POWER OUTLET - CLEANER'S
PTZ	PAN-TILT-ZOOM CAMERA
PU/IN1	PUMP - INFUSION, SINGLE
PU/IR	PUMP - INFUSION, RAPID
PU/S	PUMP - SYRINGE
PU/SAM	PUMP - SUCTION, ASPIRATOR, MOBILE
PU/SAP	PUMP - SUCTION, ASPIRATOR, PORTABLE
RAG	RETURN AIR GRILLE
S	SUCTION
SA	SURGICAL AIR
SAC	STAFF ASSIST CALL
SB	SUCTION BOTTLE
SBC	SUCTION BOTTLE CARRIER
SC	SCAVENGE OUTLET
SK4	FLOOR VINYL COVED SKIRTING
SME	SMOKE EVACUATOR
SPE/A	SERVICES PENDANT - ANAESTHESIA
SPE/P	SERVICES PENDANT - PERFUSIONIST
SPE/S	SERVICES PENDANT - SURGICAL
ST/O	STOOL - OPERATING, MOBILE
T/A	TROLLEY - ANAESTHETIC
T/AMD	TROLLEY - AUTOMATED MEDICATION DISPENSING
T/G	TROLLEY - GOWNS
T/I	TROLLEY - INSTRUMENT
T/R	TROLLEY - RESUSCITATION, ADULT
TA/DC	TOOL AIR - DIRECT CONNECTION
TB/MY	TABLE - MAYO
TP/HH	TELEPHONE - HANDSET, HANDSFREE
V1	VINYL FLOORING, STANDARD SLIP RESISTANT
WP/A	WAVE PAD ACCESS
WPF/SR	WALL PAINT FINISH, SCRUB RESISTANT
WV	WALL VINYL

SERVICE	4 x AV
PENDANT -	4 x COM/2
SURGICAL DROP	1 x O2
(SPE/S)	1 x MA
	1 x S
	2 x SA (FOR DRILLS)
	1 x CO2 (OPTIONAL)
	10 x PO/1I
	1 x DCE
	1 x TA/DC (FOR SUPPLY UNIT BRAKES)
L/O2M	1 x AV (MON/D)
(IN CEILING	1 x COM/2 (MON/D)
OUTLETS)	1 x DCU/1
	1 x PO/2U (MON/D)
L/O3CM2	2 x AV (MON/D & MON/TS)
(IN CEILING	2 x COM/2 (MON/D & MON/TS)
OUTLETS)	1 x DCU/1
	2 x PO/2U (MON/D & MON/TS)
	1 x COM/DC (IN LIGHT CAMERA)
CONP/SR	1 x DCU/1
	1 x COM/DC
MON/D 55"	2 x AV (1 PER MONITOR)
(BOTH)	2 x COM/2 (1 PER MONITOR)
	2 x PO/2U (1 PER MONITOR)
MON/TS	1 x AV
(WALL MOUNTED	1 x COM/2
FULLY RECESSED)	1 x PO/2U
PTZ, OPTIONAL	1 x COM/DC
(IN CEILING	1 x DCU/1
OUTLETS)	

NOTE:
RADIATION SHIELDING REQUIREMENTS TO BE PROVIDED BY A QUALIFIED RADIATION SHIELDING CONSULTANT

NOTE:
NUMBER OF REQUIRED SERVICES PER PENDANT TO BE ADJUSTED TO MEET PROJECT REQUIREMENTS BUT NOT TO BE LESS THAN THE NUMBERS SHOWN HERE.

NOTE:
WALL FINISH: FULL HEIGHT WALL VINYL OR EPOXY PAINT OR WPF/SR.
DOOR: LAMINATED DOOR PANEL WITH ENAMEL PAINT FINISH ON METAL DOOR FRAME



PLAN

REV	DESCRIPTION	DATE	BY	REV	DESCRIPTION	DATE	BY	COMPATIBILITY
1	FIRST ISSUE	27.01.23	AK					iHFG



International Health Facility Guidelines at:
www.healthdesign.com.au/iHFG
Editable version of Standard Components on
Health Facility Briefing System (HFBS) at:
www.healthdesign.com.au/TAHPI

DESIGNED	APPROVED	DATE	SCALE(S)	SHEET
AK	RH	27.01.23	1 : 50	1 OF 4
REVIT FILE NAME		PAPER DRAWING ID		ISSUE
or-ca-i		or-ca-i-1		1

iHFG Standard Components

Room Layout Sheet

RLS Room Code

or-ca-i

Room Name

Operating Room - Cardiac

RDS Room Code

or-ca-i

BNR	BENCH - RESINATE
BS1	BOWL STAND - SINGLE
CBT/BFW	CABINET - BLANKET/ FLUID WARMING
CBT/SER	CABINET - SERVER, OPERATING THEATRE INTEGRATION
CBT/STO	CABINET - STORAGE, OPERATING THEATRE INSTRUMENT
CHR/A	CHAIR - ANAESTHETIST
CMP	COMPUTER
COM/1	COMMUNICATION OUTLET - SINGLE
COM/2	COMMUNICATION OUTLET - DOUBLE
CONP/SR	CONTROL PANEL - SURGICAL, RECESSED
DDG	DISPENSER - DISPOSABLE GLOVES
DFP	DOOR AND DOOR FRAME PROTECTION
DFR	DEFIBRILLATOR
HHU	HYPOTHERMIA UNIT
IM/USU	IMAGING - ULTRASOUND SCANNING UNIT
IVS	IV STAND - MOBILE
KB	KICKBUCKET & STAND
L/O2M	LIGHT - OPERATING, 2-ARM, 1 LIGHT / 1 MONITOR
L/O3CM2	LIGHT - OPERATING, 3-ARM, 1 LIGHT WITH CAMERA / 2 MONITORS
LIND/S	LINEN CARRIER - DIRTY, SINGLE
MON/D	MONITOR - DISPLAY
MON/TS	MONITOR - TOUCH SCREEN
OPS/R	OBSERVATION PANEL WITH SLIDING PANEL - RADIATION SHIELDING
OPV	OBSERVATION PANEL WITH INTEGRAL VENETIAN BLINDS
PC2	PLASTERBOARD CORNICE, FLUSHED COVERED
PO/1-32A	POWER OUTLET - SINGLE, 32 AMPS
PO/2E	POWER OUTLET - EMERGENCY, DOUBLE
PO/2U	UNINTERRUPTED POWER SUPPLY - DOUBLE
PO/C	POWER OUTLET - CLEANER'S
PTZ	PAN-TILT-ZOOM CAMERA
PU/IN1	PUMP - INFUSION, SINGLE
PU/IR	PUMP - INFUSION, RAPID
PU/S	PUMP - SYRINGE
PU/SAM	PUMP - SUCTION, ASPIRATOR, MOBILE
PU/SAP	PUMP - SUCTION, ASPIRATOR, PORTABLE
RAG	RETURN AIR GRILLE
SB	SUCTION BOTTLE
SBC	SUCTION BOTTLE CARRIER
SK4	FLOOR VINYL COVERED SKIRTING
SPE/S	SERVICES PENDANT - SURGICAL
T/A	TROLLEY - ANAESTHETIC
T/AMD	TROLLEY - AUTOMATED MEDICATION DISPENSING
T/G	TROLLEY - GOWNS
T/I	TROLLEY - INSTRUMENT
T/R	TROLLEY - RESUSCITATION, ADULT
TB/MY	TABLE - MAYO
TP/HH	TELEPHONE - HANDSET, HANDSFREE
WP/A	WAVE PAD ACCESS
WPFSR	WALL PAINT FINISH, SCRUB RESISTANT
WV	WALL VINYL

SERVICE PENDANT - ANAESTHETIC DROP (SPE/A)	4 x AV (2 PER ARM)
PERFUSIONIST DROP (SPE/P)	4 x COM/2 (2 PER ARM)
	1 x O2 (ANAESTHESIA ARM)
	2 x O2 (PERFUSIONIST ARM)
	2 x N2O (ANAESTHESIA ARM)
	1 x MA (ANAESTHESIA ARM)
	2 x MA (PERFUSIONIST ARM)
	1 x S (ANAESTHESIA ARM)
	2 x S (PERFUSIONIST ARM)
	2 x SC (ANAESTHESIA ARM)
	1 x CO2 (PERFUSIONIST ARM) (OPTIONAL)
	1 x EC
	1 x SAC
	1 x OPC (OPTIONAL)
	20 x PO/II (10 PER ARM)
	1 x DCE
	1 x TA/DC (FOR SUPPLY UNIT BRAKES)

SERVICE PENDANT - SURGICAL DROP (SPE/S)	4 x AV
	4 x COM/2
	1 x O2
	1 x MA
	1 x S
	2 x SA (FOR DRILLS)
	10 x PO/II
	1 x DCE
	1 x TA/DC (FOR SUPPLY UNIT BRAKES)

L/O2M (IN CEILING OUTLETS)	1 x AV (MON/D)
	1 x COM/2 (MON/D)
	1 x DCU/1
	1 x PO/2U (MON/D)

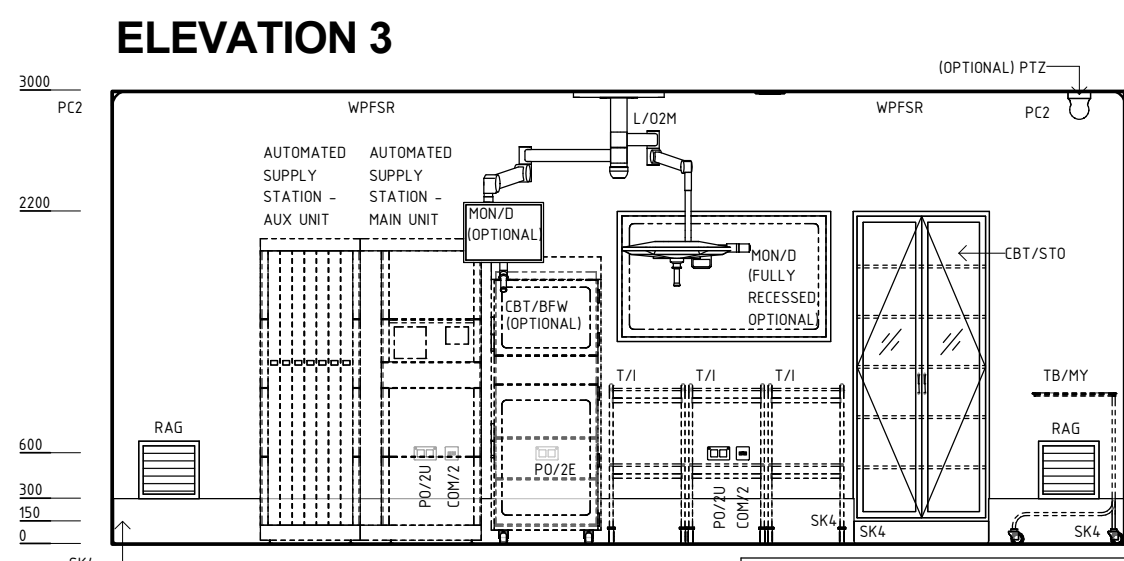
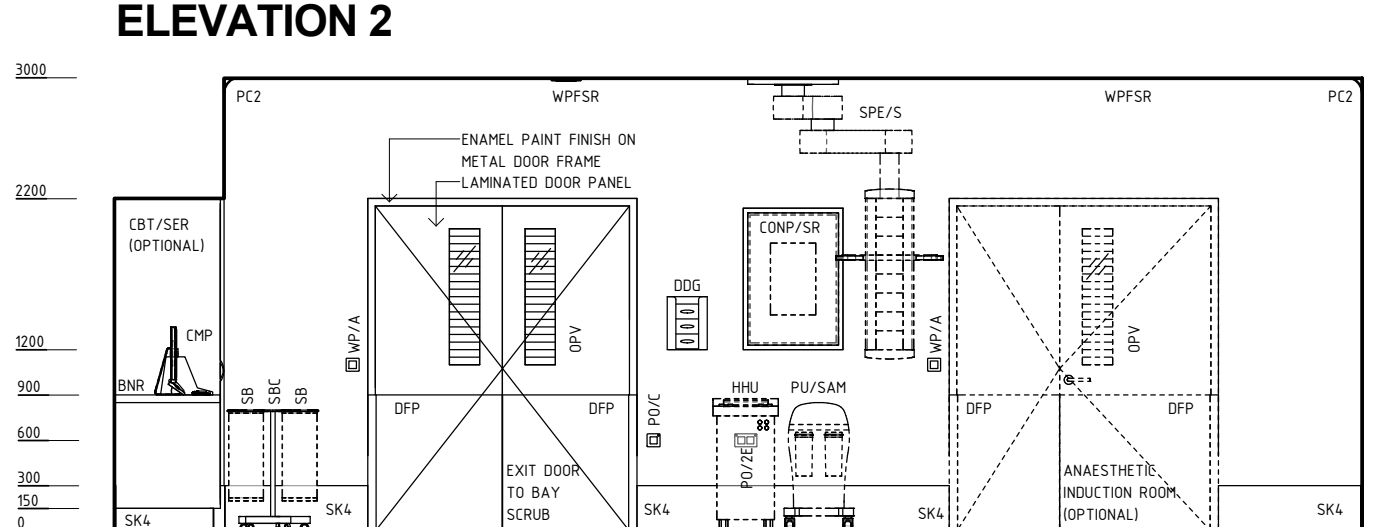
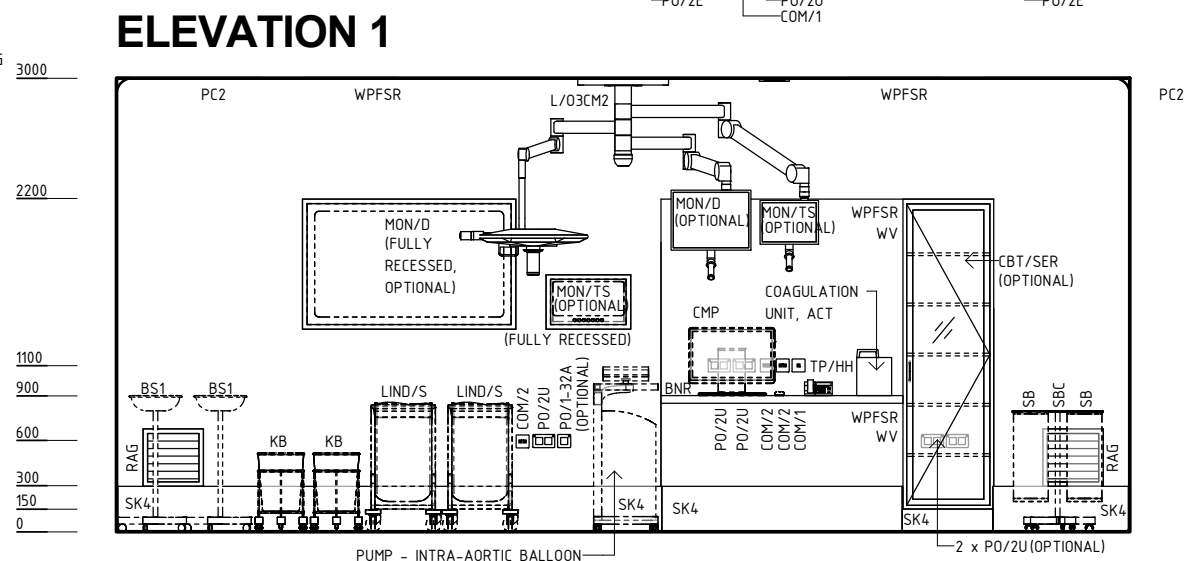
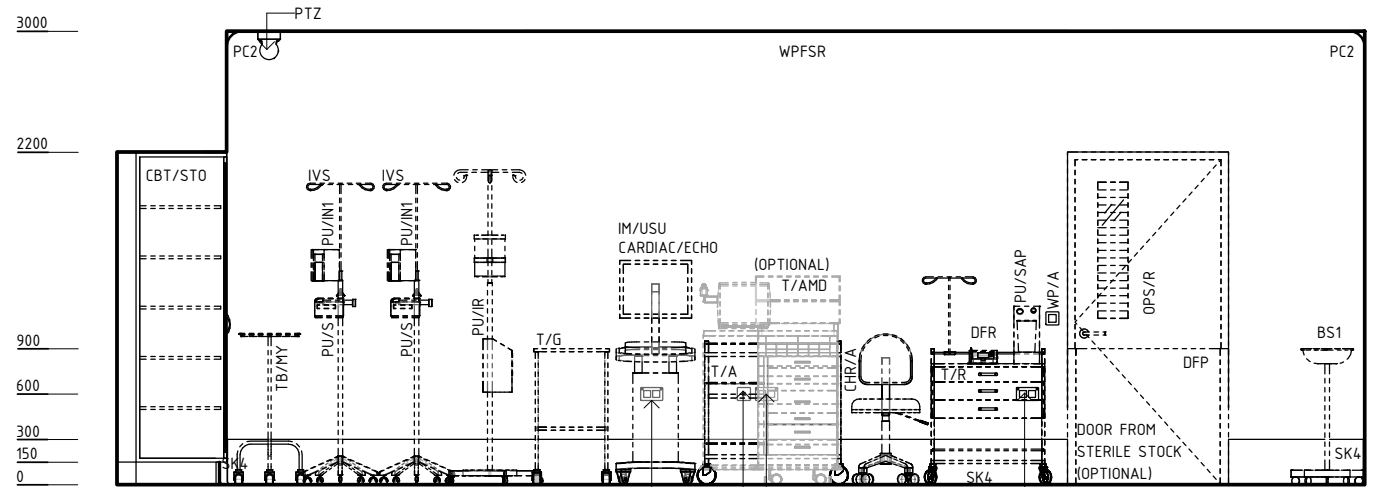
L/O3CM2 (IN CEILING OUTLETS)	2 x AV (MON/D & MON/TS)
	2 x COM/2 (MON/D & MON/TS)
	1 x DCU/1
	2 x PO/2U (MON/D & MON/TS)
	1 x COM/DC (IN LIGHT CAMERA)

CONP/SR	1 x DCU/1
	1 x COM/DC

MON/D 55" (BOTH)	2 x AV (1 PER MONITOR)
	2 x COM/2 (1 PER MONITOR)
	2 x PO/2U (1 PER MONITOR)

MON/TS (WALL MOUNTED FULLY RECESSED)	1 x AV
	1 x COM/2
	1 x PO/2U

PTZ, OPTIONAL (IN CEILING OUTLETS)	1 x COM/DC
	1 x DCU/1



NOTE: RADIATION SHIELDING REQUIREMENTS TO BE PROVIDED BY A QUALIFIED RADIATION SHIELDING CONSULTANT

NOTE: NUMBER OF REQUIRED SERVICES PER PENDANT TO BE ADJUSTED TO MEET PROJECT REQUIREMENTS BUT NOT TO BE LESS THAN THE NUMBERS SHOWN HERE.

NOTE: WALL FINISH: FULL HEIGHT WALL VINYL OR EPOXY PAINT OR WPFSR. DOOR: LAMINATED DOOR PANEL WITH ENAMEL PAINT FINISH ON METAL DOOR FRAME

REV	DESCRIPTION	DATE	BY	REV	DESCRIPTION	DATE	BY	COMPATIBILITY
1	FIRST ISSUE	27.01.23	AK					iHFG



International Health Facility Guidelines at: www.healthdesign.com.au/iHFG
 Editable version of Standard Components on Health Facility Briefing System (HFBS) at: www.healthdesign.com.au ©TAHPI



DESIGNED	APPROVED	DATE	SCALE(S)	SHEET
AK	RH	27.01.23	1 : 50	2 OF 4
REVIT FILE NAME		PAPER DRAWING ID		ISSUE
or-ca-i		or-ca-i-2		1

This document is for advisory purpose only

iHFG Standard Components

Room Layout Sheet

RLS Room Code

or-ca-i

Room Name

Operating Room - Cardiac

RDS Room Code

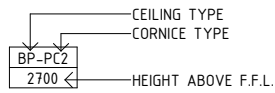
or-ca-i

GENERAL NOTES:

THIS DRAWING TO BE READ IN CONJUNCTION WITH R.D.S. (ROOM DATA SHEETS) WHICH TAKES PRECEDENCE.

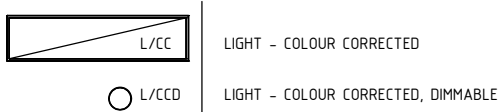
ALL SERVICES INDICATED ARE INDICATIVE AND SUBJECT TO DETAILED PROJECT SPECIFIC ENGINEERING DESIGN.

CEILING LEGEND:

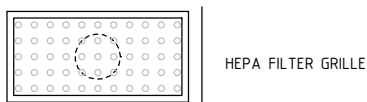


PBSR | PLASTERBOARD FLUSH SET CEILING, SCRUB RESISTANT PAINT FINISH
 PBSR-PC2 | PLASTERBOARD FLUSH SET CEILING, SCRUB RESISTANT PAINT FINISH WITH PLASTERBOARD CORNICE, FLUSHED COVERED GRID LINE

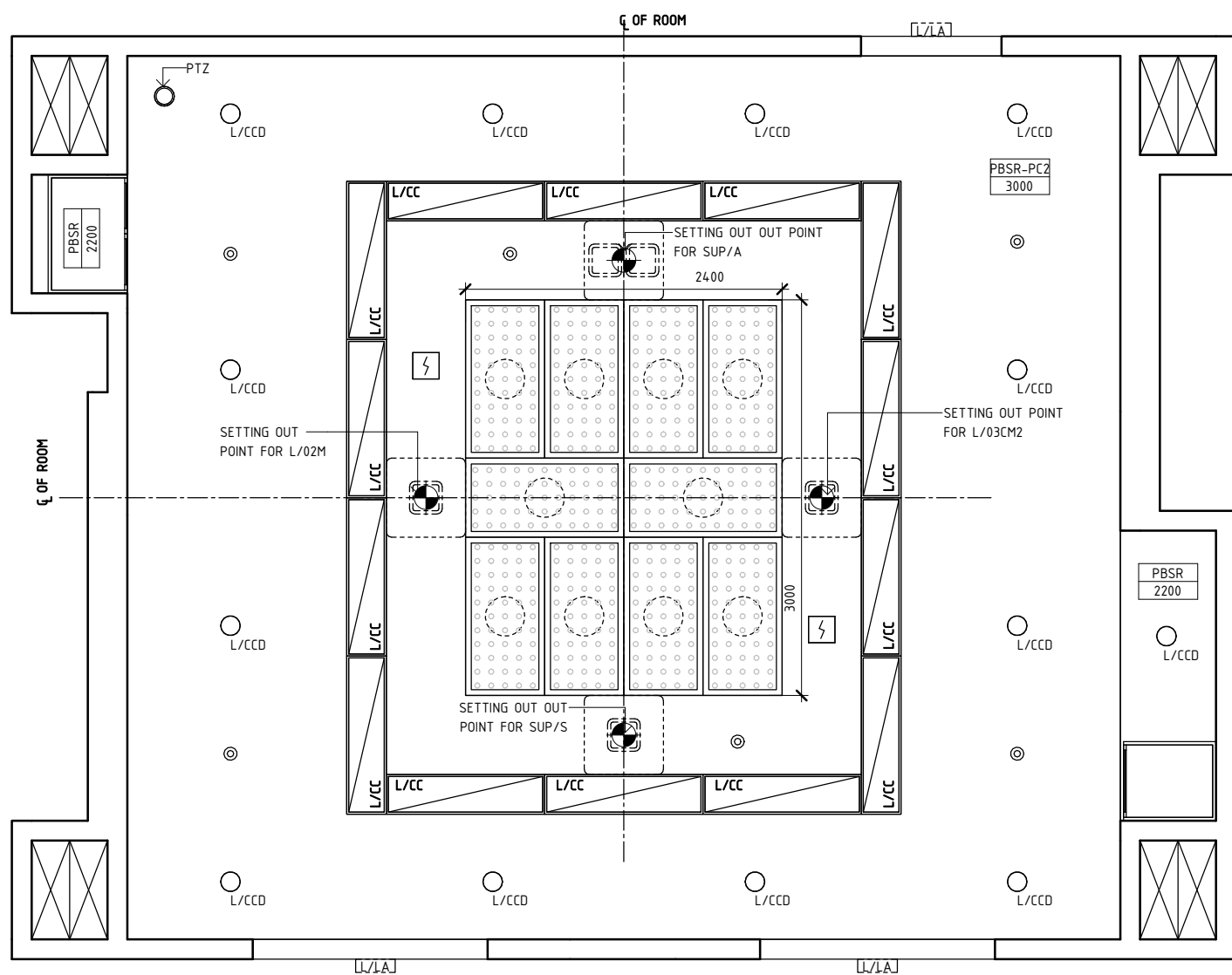
ELECTRICAL LEGEND:



MECHANICAL LEGEND:



FIRE SERVICES LEGEND:



REFLECTED CEILING PLAN

REV	DESCRIPTION	DATE	BY	REV	DESCRIPTION	DATE	BY	COMPATIBILITY
1	FIRST ISSUE	27.01.23	AK					iHFG

iHFG Standard Components

Room Layout Sheet

RLS Room Code

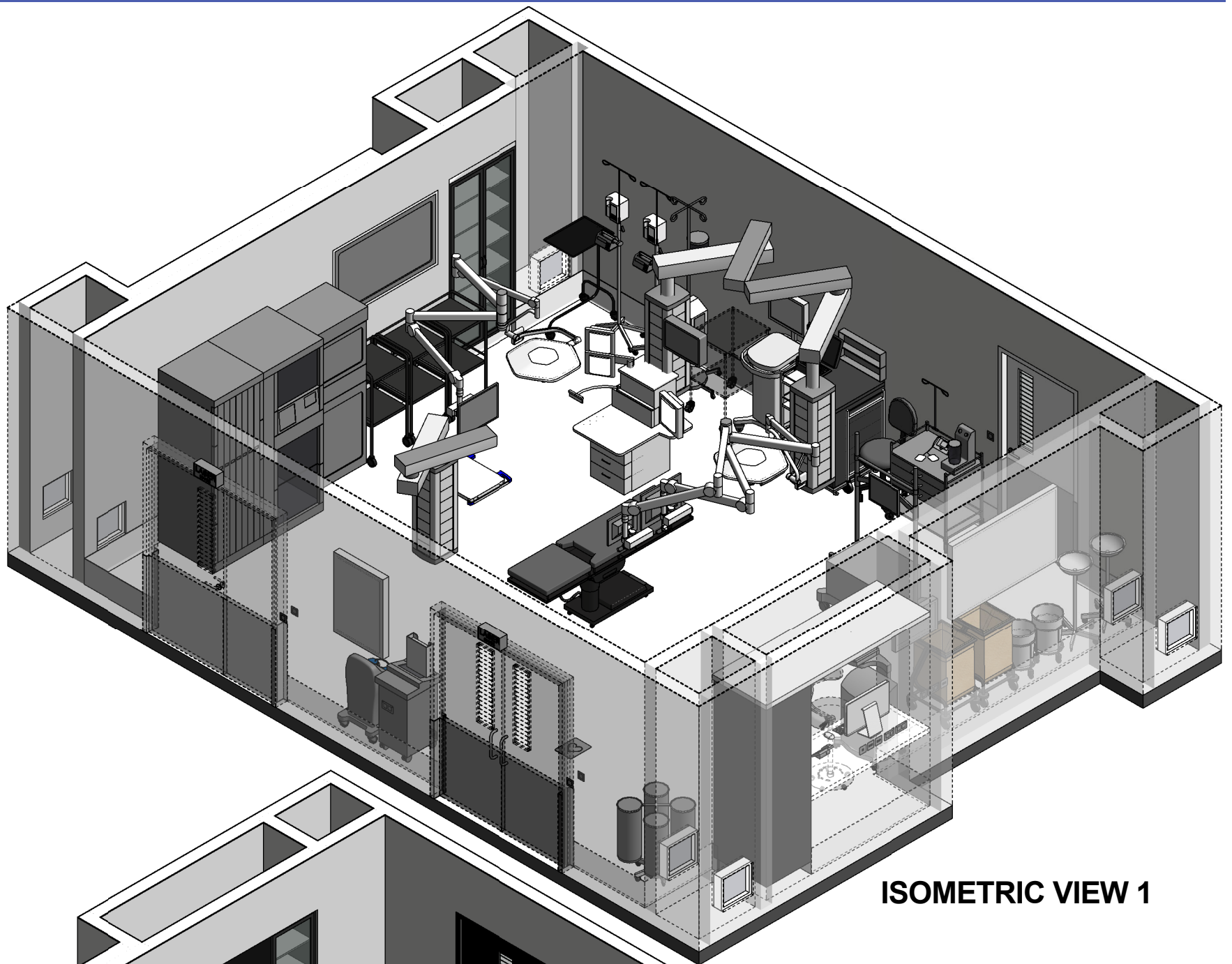
or-ca-i

RDS Room Code

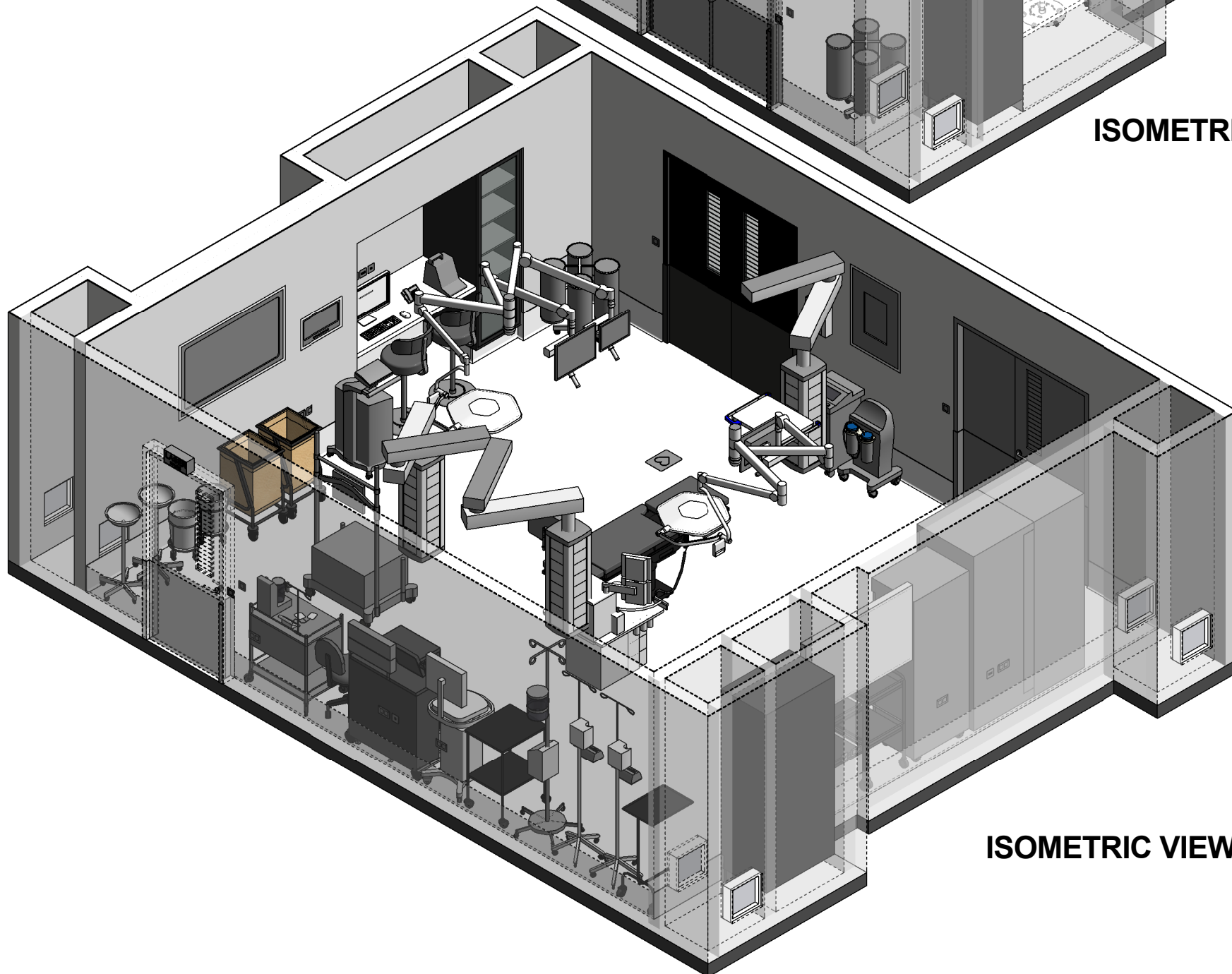
or-ca-i

Room Name

Operating Room - Cardiac



ISOMETRIC VIEW 1



ISOMETRIC VIEW 2

REV	DESCRIPTION	DATE	BY	REV	DESCRIPTION	DATE	BY	COMPATIBILITY																				
1	FIRST ISSUE	27.01.23	AK					iHFG																				
								<table border="1"> <thead> <tr> <th>DESIGNED</th> <th>APPROVED</th> <th>DATE</th> <th>SCALE(S)</th> <th>SHEET</th> </tr> </thead> <tbody> <tr> <td>AK</td> <td>RH</td> <td>27.01.23</td> <td></td> <td>4 OF 4</td> </tr> <tr> <td colspan="2">REVIT FILE NAME</td> <td colspan="2">PAPER DRAWING ID</td> <td>ISSUE</td> </tr> <tr> <td colspan="2">or-ca-i</td> <td colspan="2">or-ca-i-4</td> <td>1</td> </tr> </tbody> </table>	DESIGNED	APPROVED	DATE	SCALE(S)	SHEET	AK	RH	27.01.23		4 OF 4	REVIT FILE NAME		PAPER DRAWING ID		ISSUE	or-ca-i		or-ca-i-4		1
DESIGNED	APPROVED	DATE	SCALE(S)	SHEET																								
AK	RH	27.01.23		4 OF 4																								
REVIT FILE NAME		PAPER DRAWING ID		ISSUE																								
or-ca-i		or-ca-i-4		1																								