

iHFG Standard Components

Room Layout Sheet

RLS Room Code

or-tr-i

Room Name

Operating Room - Transplant

RDS Room Code

or-tr-i

ANMM	ANAESTHETIC - MACHINE WITH ANAESTHETIC MONITOR
AV	AUDIO VISUAL OUTLET
AV/DC	AUDIO VISUAL OUTLET - DIRECT CONNECTION
BLVI	BLIND - VENETIAN, INTEGRAL
BNR	BENCH - RESINATE
BRCCM	BRACKET - CARDIAC MONITOR
BS1	BOWL STAND - SINGLE
CARP	CARDIAC PROTECTED
CBT/BFW	CABINET - BLANKET/ FLUID WARMING
CBT/SER	CABINET - SERVER, OPERATING THEATRE INTEGRATION
CBT/STO	CABINET - STORAGE, OPERATING THEATRE INSTRUMENT
CHR/A	CHAIR - ANAESTHETIST
CMP	COMPUTER
COM/1	COMMUNICATION OUTLET - SINGLE
COM/2	COMMUNICATION OUTLET - DOUBLE
COM/DC	COMMUNICATION OUTLET - DIRECT CONNECTION
CONP/SR	CONTROL PANEL - SURGICAL, RECESSED
DCE	DIRECT CONNECTION - EMERGENCY POWER SUPPLY
DCU/1	DIRECT CONNECTION - UNINTERRUPTED POWER SUPPLY, SINGLE
DDG	DISPENSER - DISPOSABLE GLOVES
DFP	DOOR AND DOOR FRAME PROTECTION
DFR	DEFIBRILLATOR
EC	EMERGENCY CALL
ESU	ELECTRO SURGICAL UNIT
HHU	HYPO-HYPERTHERMIA UNIT
IVS	IV STAND - MOBILE
KB	KICKBUCKET & STAND
L/CCD	LIGHT - COLOUR CORRECTED, DIMMABLE
L/LA	LIGHT - 'LASER IN USE'
L/O2M	LIGHT - OPERATING, 2-ARM, 1 LIGHT / 1 MONITOR
L/O3CM2	LIGHT - OPERATING, 3-ARM, 1 LIGHT WITH CAMERA / 2 MONITORS
LIND/S	LINEN CARRIER - DIRTY, SINGLE
MA	MEDICAL AIR
MON/C	MONITOR - CARDIAC
MON/D	MONITOR - DISPLAY
MON/TS	MONITOR - TOUCH SCREEN
N2O	NITROUS OXIDE
O2	OXYGEN
OP/R	OBSERVATION PANEL - RADIATION SHIELDING
OPC	ORDERLY/ PORTER CALL
OTA/M	OPERATING TABLE - MOBILE, ELECTRIC
PC2	PLASTERBOARD CORNICE, FLUSHED COVERED
PO/1-32A	POWER OUTLET - SINGLE, 32 AMPS
PO/1I	ISOLATED POWER SUPPLY - SINGLE

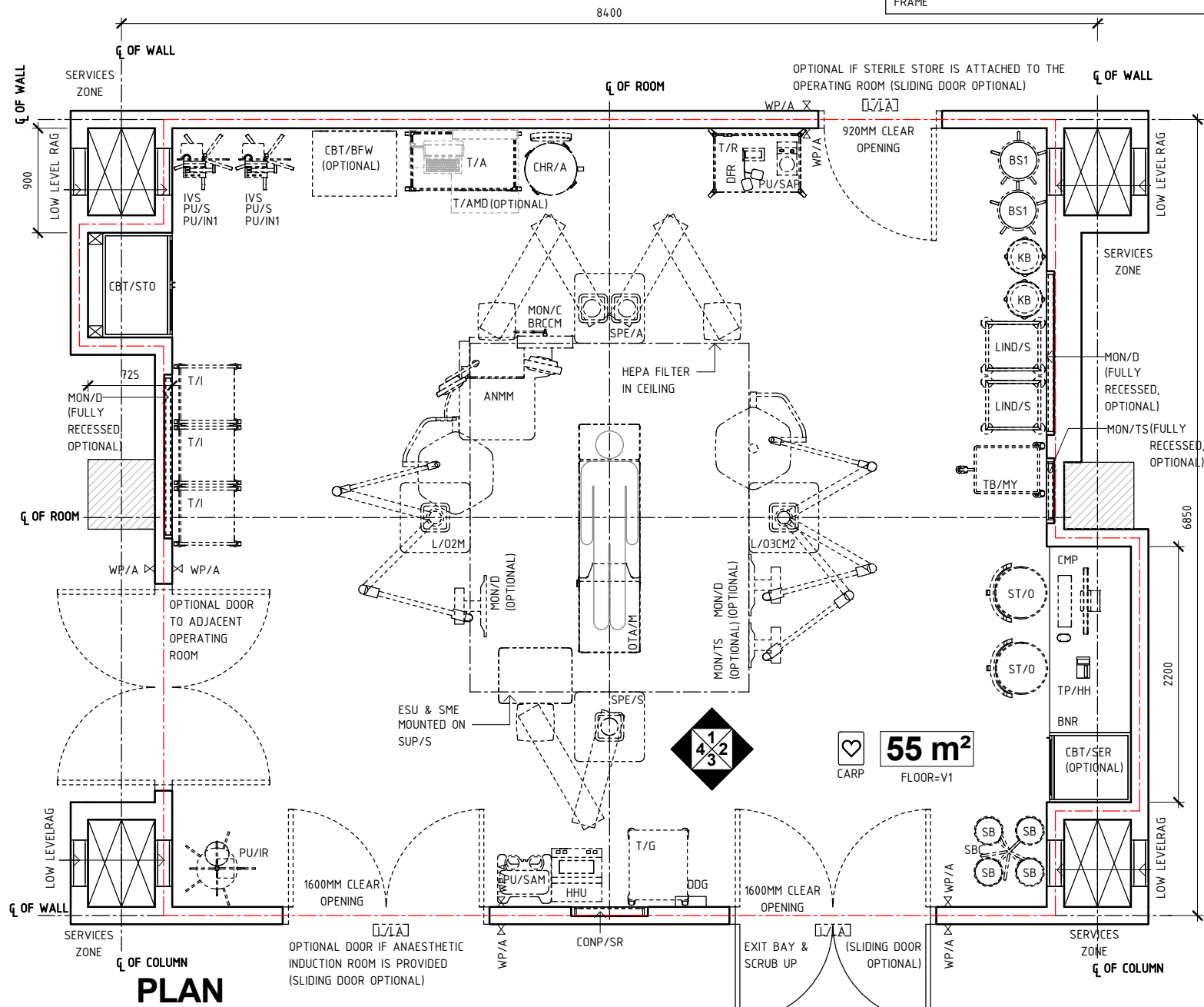
PO/2E	POWER OUTLET - EMERGENCY, DOUBLE
PO/2U	UNINTERRUPTED POWER SUPPLY - DOUBLE
PO/C	POWER OUTLET - CLEANER'S
PTZ	PAN-TILT-ZOOM CAMERA
PU/IN1	PUMP - INFUSION, SINGLE
PU/IR	PUMP - INFUSION, RAPID
PU/S	PUMP - SYRINGE
PU/SAM	PUMP - SUCTION, ASPIRATOR, MOBILE
PU/SAP	PUMP - SUCTION, ASPIRATOR, PORTABLE
RAG	RETURN AIR GRILLE
S	SUCTION
SA	SURGICAL AIR
SAC	STAFF ASSIST CALL
SB	SUCTION BOTTLE
SBC	SUCTION BOTTLE CARRIER
SC	SCAVENGE OUTLET
SK4	FLOOR VINYL COVERED SKIRTING
SME	SMOKE EVACUATOR
SPE/A	SERVICES PENDANT - ANAESTHESIA
SPE/S	SERVICES PENDANT - SURGICAL
ST/O	STOOL - OPERATING, MOBILE
T/A	TROLLEY - ANAESTHETIC
T/AMD	TROLLEY - AUTOMATED MEDICATION DISPENSING
T/G	TROLLEY - GOWNS
T/I	TROLLEY - INSTRUMENT
T/R	TROLLEY - RESUSCITATION, ADULT
TA/DC	TOOL AIR - DIRECT CONNECTION
TB/MY	TABLE - MAYO
TP/HH	TELEPHONE - HANDSET, HANDSFREE
V1	VINYL FLOORING, STANDARD SLIP RESISTANT
WP/A	WAVE PAD ACCESS
WPFSR	WALL PAINT FINISH, SCRUB RESISTANT

SERVICE	4 x AV
PENDANT -	4 x COM/2
SURGICAL (SPE/S)	2 x O2
	1 x MA
	2 x S
	2 x SA (FOR DRILLS)
	1 x CO2 (OPTIONAL)
	12 x PO/1I
	1 x DCE
	1 x TA/DC (FOR SUPPLY UNIT BRAKES)
L/O2M (IN CEILING OUTLETS)	1 x AV (MON/D)
	1 x COM/2 (MON/D)
	1 x DCU/1
	1 x PO/2U (MON/D)
L/O3CM2 (IN CEILING OUTLETS)	2 x AV (MON/D & MON/TS)
	2 x COM/2 (MON/D & MON/TS)
	1 x DCU/1
	2 x PO/2U (MON/D & MON/TS)
	1 x COM/DC (IN LIGHT CAMERA)
CONP/SR	1 x DCU/1
	1 x COM/DC
MON/D 55" (BOTH)	2 x AV (1 PER MONITOR)
	2 x COM/2 (1 PER MONITOR)
	2 x PO/2U (1 PER MONITOR)
MON/TS (FULLY MOUNTED FULLY RECESSED)	1 x AV
	1 x COM/2
	1 x PO/2U
PTZ, OPTIONAL (IN CEILING OUTLETS)	1 x COM/DC
	1 x DCU/1

NOTE:
RADIATION SHIELDING REQUIREMENTS TO BE PROVIDED BY A QUALIFIED RADIATION SHIELDING CONSULTANT

NOTE:
NUMBER OF REQUIRED SERVICES PER PENDANT TO BE ADJUSTED TO MEET PROJECT REQUIREMENTS BUT NOT TO BE LESS THAN THE NUMBERS SHOWN HERE.

NOTE:
WALL FINISH: FULL HEIGHT WALL VINYL OR EPOXY PAINT OR WPFSR.
DOOR: LAMINATED DOOR PANEL WITH ENAMEL PAINT FINISH ON METAL DOOR FRAME



REV	DESCRIPTION	DATE	BY	REV	DESCRIPTION	DATE	BY	COMPATIBILITY
1	FIRST ISSUE	27.01.23	AK					iHFG

	DESIGNED	APPROVED	DATE	SCALE(S)	SHEET
	AK	RH	27.01.23	1 : 50	1 OF 4
	REVIT FILE NAME	PAPER DRAWING ID	ISSUE		
	or-tr-i	or-tr-i-1	1		

This document is for advisory purpose only

iHFG Standard Components

Room Layout Sheet

RLS Room Code

or-tr-i

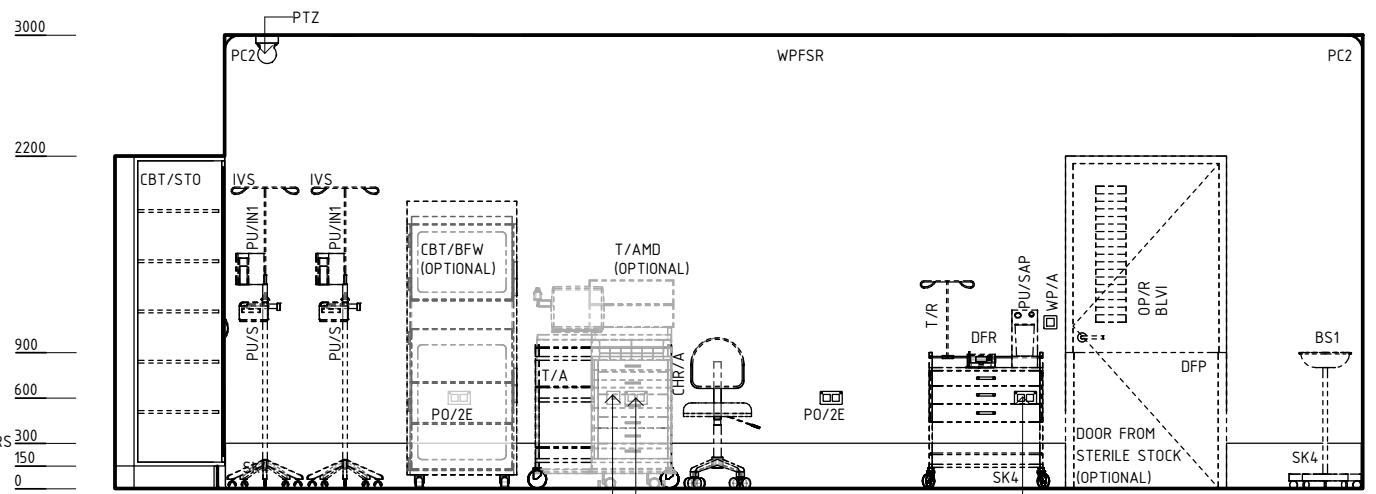
Room Name

Operating Room - Transplant

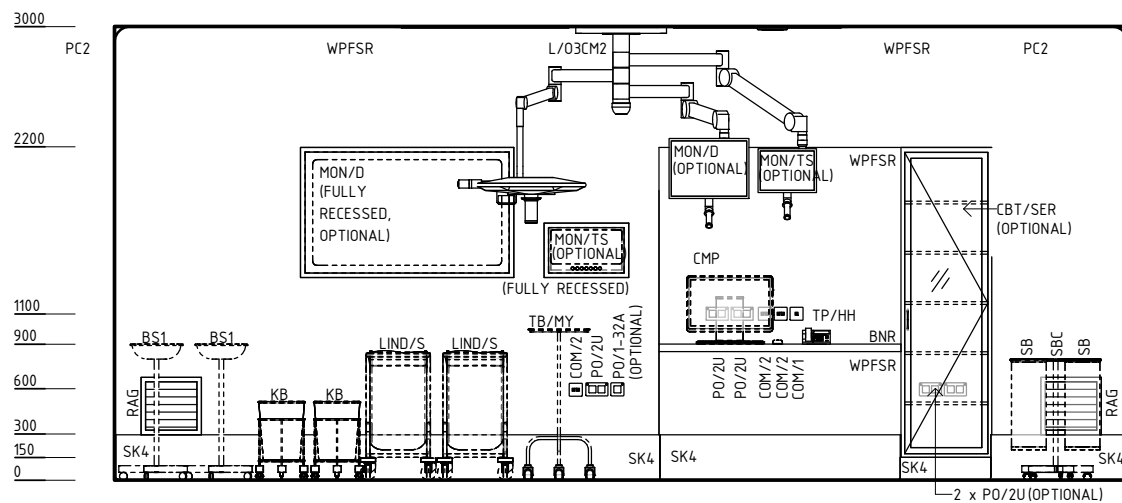
RDS Room Code

or-tr-i

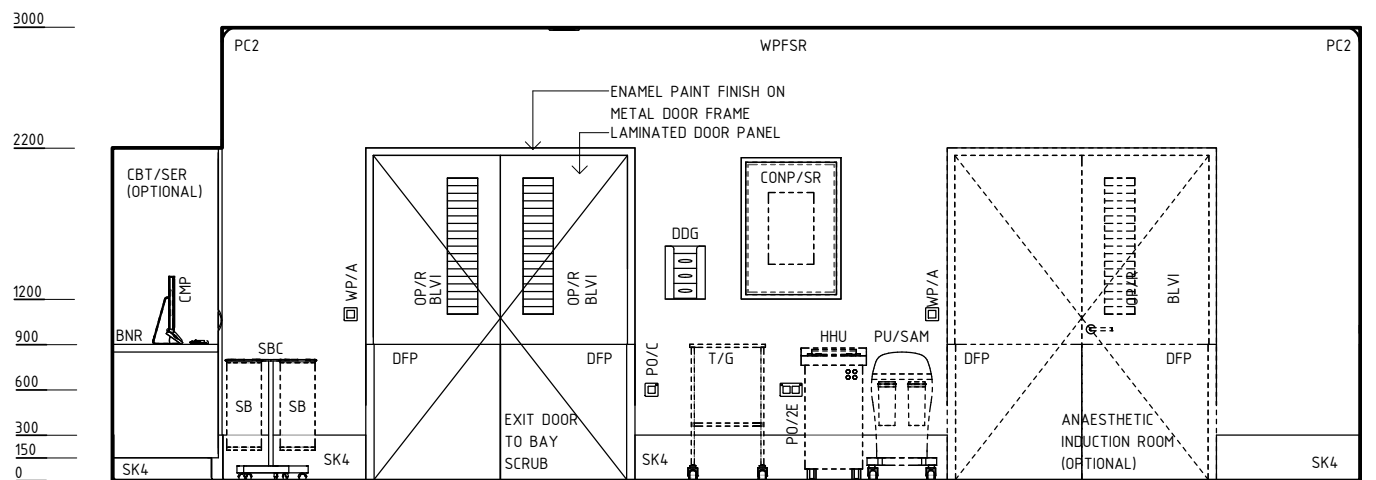
BLVI	BLIND - VENETIAN, INTEGRAL
BNR	BENCH - RESINATE
BS1	BOWL STAND - SINGLE
CBT/BFW	CABINET - BLANKET/ FLUID WARMING
CBT/SER	CABINET - SERVER, OPERATING THEATRE INTEGRATION
CBT/STO	CABINET - STORAGE, OPERATING THEATRE INSTRUMENT
CHR/A	CHAIR - ANAESTHETIST
CMP	COMPUTER
COM/1	COMMUNICATION OUTLET - SINGLE
COM/2	COMMUNICATION OUTLET - DOUBLE
CONP/SR	CONTROL PANEL - SURGICAL, RECESSED
DDG	DISPENSER - DISPOSABLE GLOVES
DFP	DOOR AND DOOR FRAME PROTECTION
DFR	DEFIBRILLATOR
HHU	HYP0-HYPERHERMIA UNIT
IVS	IV STAND - MOBILE
KB	KICKBUCKET & STAND
L/02M	LIGHT - OPERATING, 2-ARM, 1 LIGHT / 1 MONITOR
L/03CM2	LIGHT - OPERATING, 3-ARM, 1 LIGHT WITH CAMERA / 2 MONITORS
LIND/S	LINEN CARRIER - DIRTY, SINGLE
MON/D	MONITOR - DISPLAY
MON/TS	MONITOR - TOUCH SCREEN
OP/R	OBSERVATION PANEL - RADIATION SHIELDING
PC2	PLASTERBOARD CORNICE, FLUSHED COVERED
PO/1-32A	POWER OUTLET - SINGLE, 32 AMPS
PO/2E	POWER OUTLET - EMERGENCY, DOUBLE
PO/2U	UNINTERRUPTED POWER SUPPLY - DOUBLE
PO/C	POWER OUTLET - CLEANER'S
PTZ	PAN-TILT-ZOOM CAMERA
PU/IN1	PUMP - INFUSION, SINGLE
PU/S	PUMP - SYRINGE
PU/SAM	PUMP - SUCTION, ASPIRATOR, MOBILE
PU/SAP	PUMP - SUCTION, ASPIRATOR, PORTABLE
RAG	RETURN AIR GRILLE
SB	SUCTION BOTTLE
SBC	SUCTION BOTTLE CARRIER
SK4	FLOOR VINYL COVERED SKIRTING
T/A	TROLLEY - ANAESTHETIC
T/AMD	TROLLEY - AUTOMATED MEDICATION DISPENSING
T/G	TROLLEY - GOWNS
T/I	TROLLEY - INSTRUMENT
T/R	TROLLEY - RESUSCITATION, ADULT
TB/MY	TABLE - MAYO
TP/HH	TELEPHONE - HANDSET, HANDSFREE
WP/A	WAVE PAD ACCESS
WPFSR	WALL PAINT FINISH, SCRUB RESISTANT



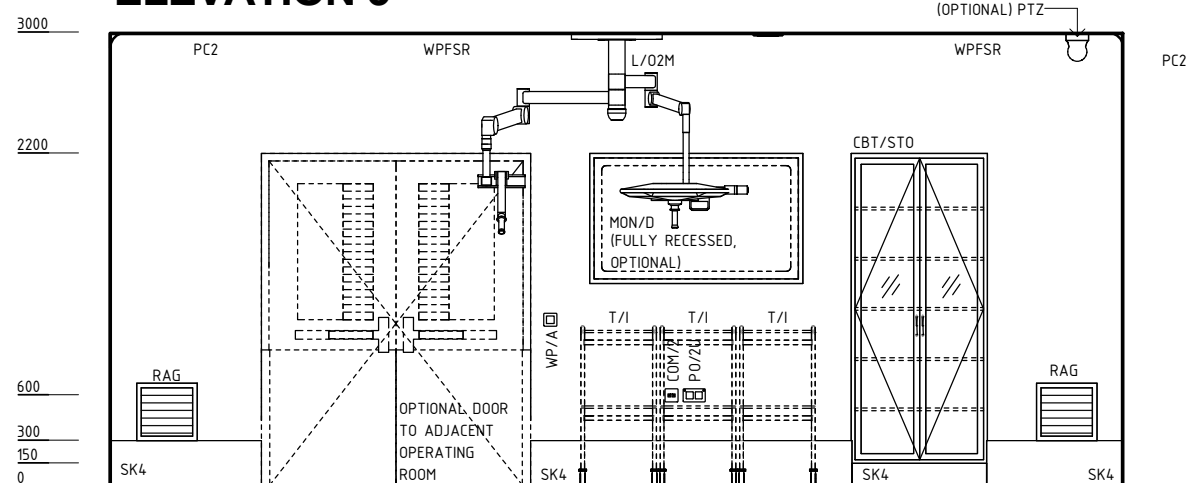
ELEVATION 1



ELEVATION 2



ELEVATION 3



ELEVATION 4

NOTE:
RADIATION SHIELDING REQUIREMENTS TO BE PROVIDED BY A QUALIFIED RADIATION SHIELDING CONSULTANT

NOTE:
NUMBER OF REQUIRED SERVICES PER PENDANT TO BE ADJUSTED TO MEET PROJECT REQUIREMENTS BUT NOT TO BE LESS THAN THE NUMBERS SHOWN HERE.

NOTE:
WALL FINISH: FULL HEIGHT WALL VINYL OR EPOXY PAINT OR WPFSR.
DOOR: LAMINATED DOOR PANEL WITH ENAMEL PAINT FINISH ON METAL DOOR FRAME

REV	DESCRIPTION	DATE	BY	REV	DESCRIPTION	DATE	BY	COMPATIBILITY
1	FIRST ISSUE	27.01.23	AK					iHFG



International Health Facility Guidelines at:
www.healthdesign.com.au/iHFG
Editable version of Standard Components on
Health Facility Briefing System (HFBS) at:
www.healthdesign.com.au ©TAHPI



DESIGNED	APPROVED	DATE	SCALE(S)	SHEET
AK	RH	27.01.23	1 : 50	2 OF 4
REVIT FILE NAME	PAPER DRAWING ID	ISSUE		
or-tr-i	or-tr-i-2	1		

This document is for advisory purpose only

iHFG Standard Components

Room Layout Sheet

RLS Room Code

or-tr-i

RDS Room Code

or-tr-i

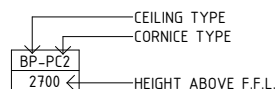
Room Name | **Operating Room - Transplant**

GENERAL NOTES:

THIS DRAWING TO BE READ IN CONJUNCTION WITH R.D.S. (ROOM DATA SHEETS) WHICH TAKES PRECEDENCE.

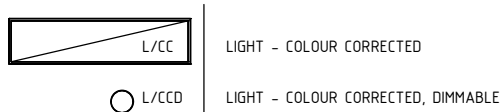
ALL SERVICES INDICATED ARE INDICATIVE AND SUBJECT TO DETAILED PROJECT SPECIFIC ENGINEERING DESIGN.

CEILING LEGEND:

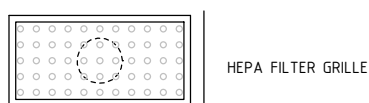


PBSR | PLASTERBOARD FLUSH SET CEILING, SCRUB RESISTANT PAINT FINISH
 PBSR-PC2 | PLASTERBOARD FLUSH SET CEILING, SCRUB RESISTANT PAINT FINISH WITH PLASTERBOARD CORNICHE, FLUSHED COVERED
 - - - | GRID LINE

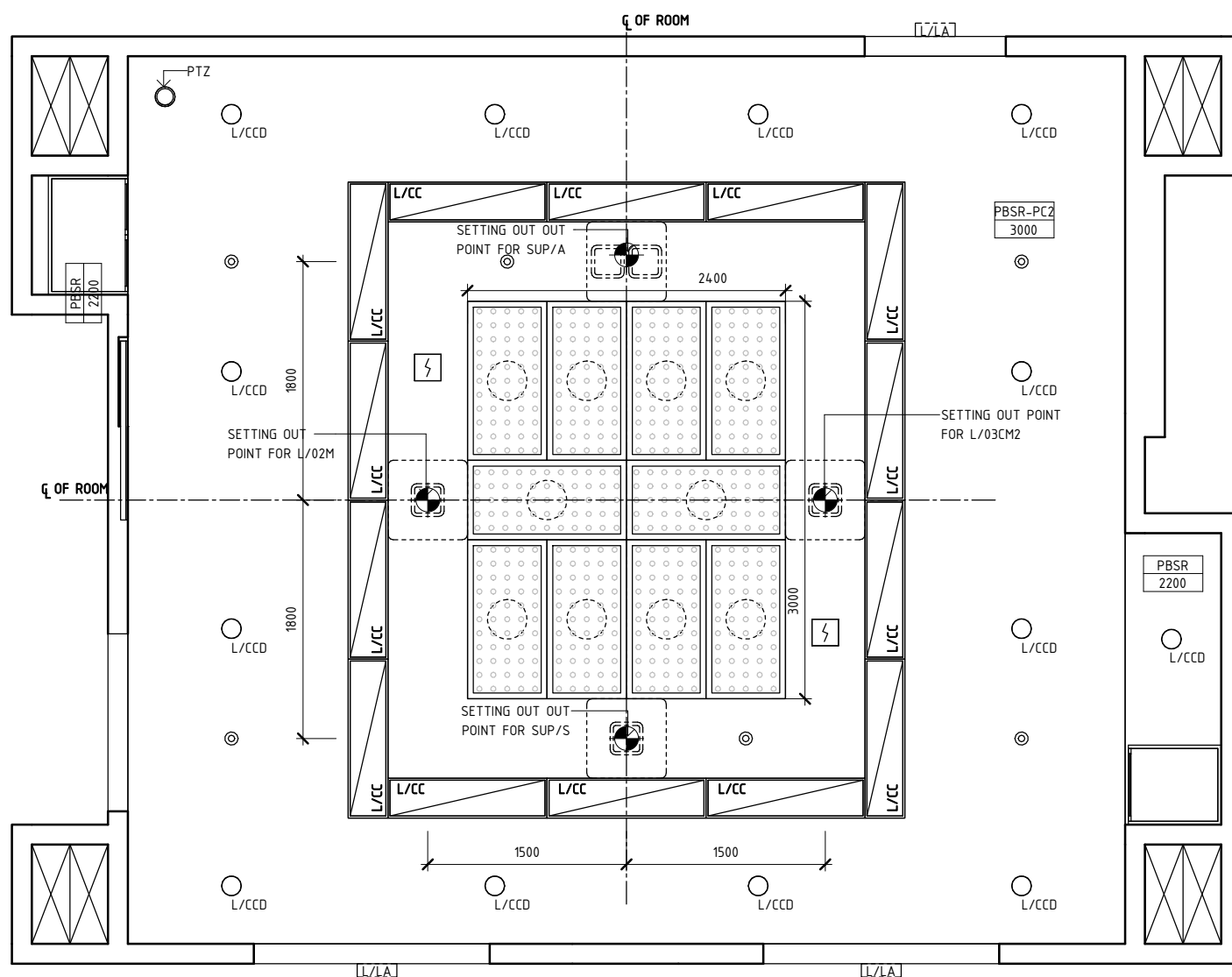
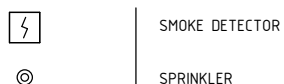
ELECTRICAL LEGEND:



MECHANICAL LEGEND:



FIRE SERVICES LEGEND:



REFLECTED CEILING PLAN

REV	DESCRIPTION	DATE	BY	REV	DESCRIPTION	DATE	BY	COMPATIBILITY
1	FIRST ISSUE	27.01.23	AK					iHFG

iHFG Standard Components

Room Layout Sheet

RLS Room Code

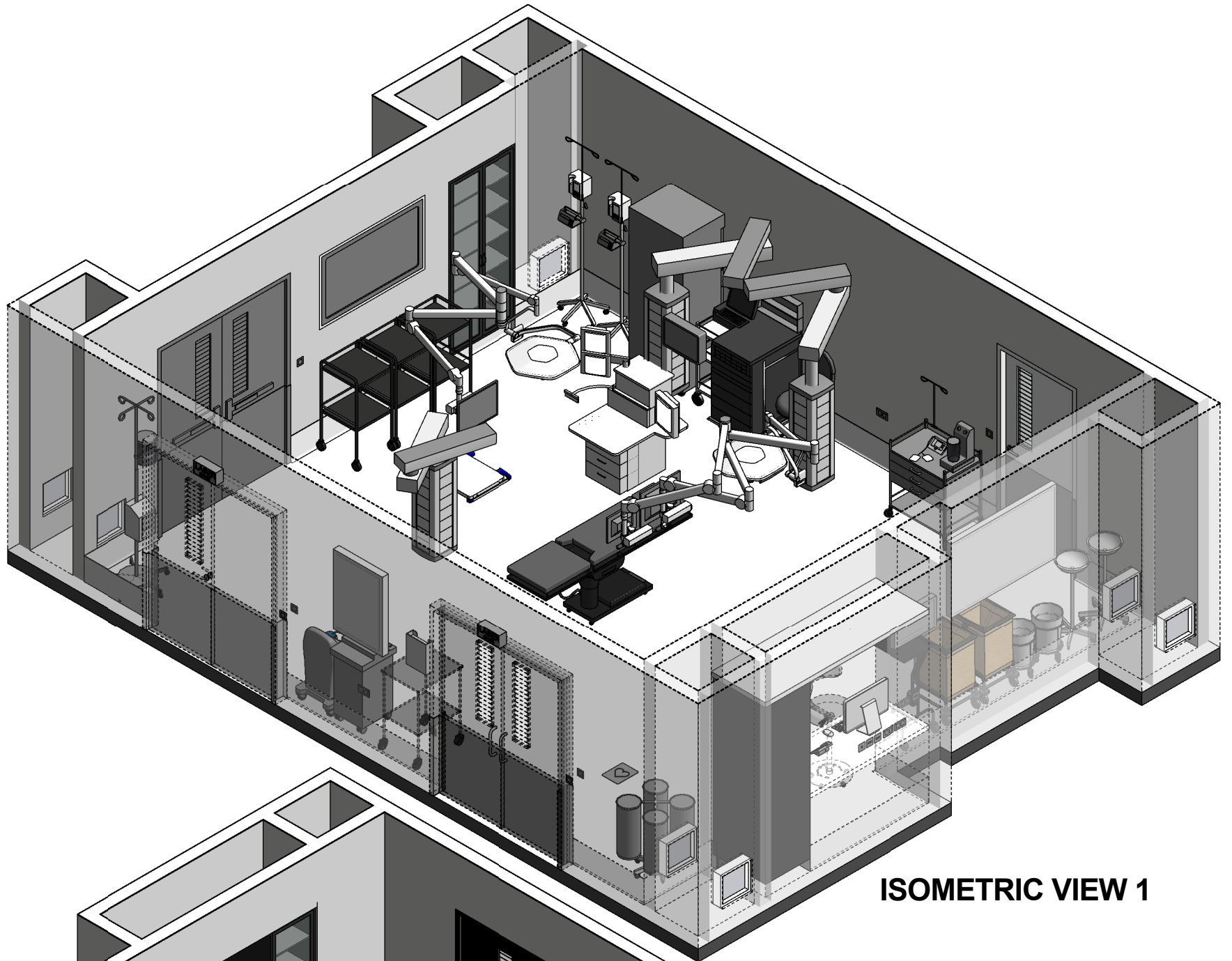
or-tr-i

RDS Room Code

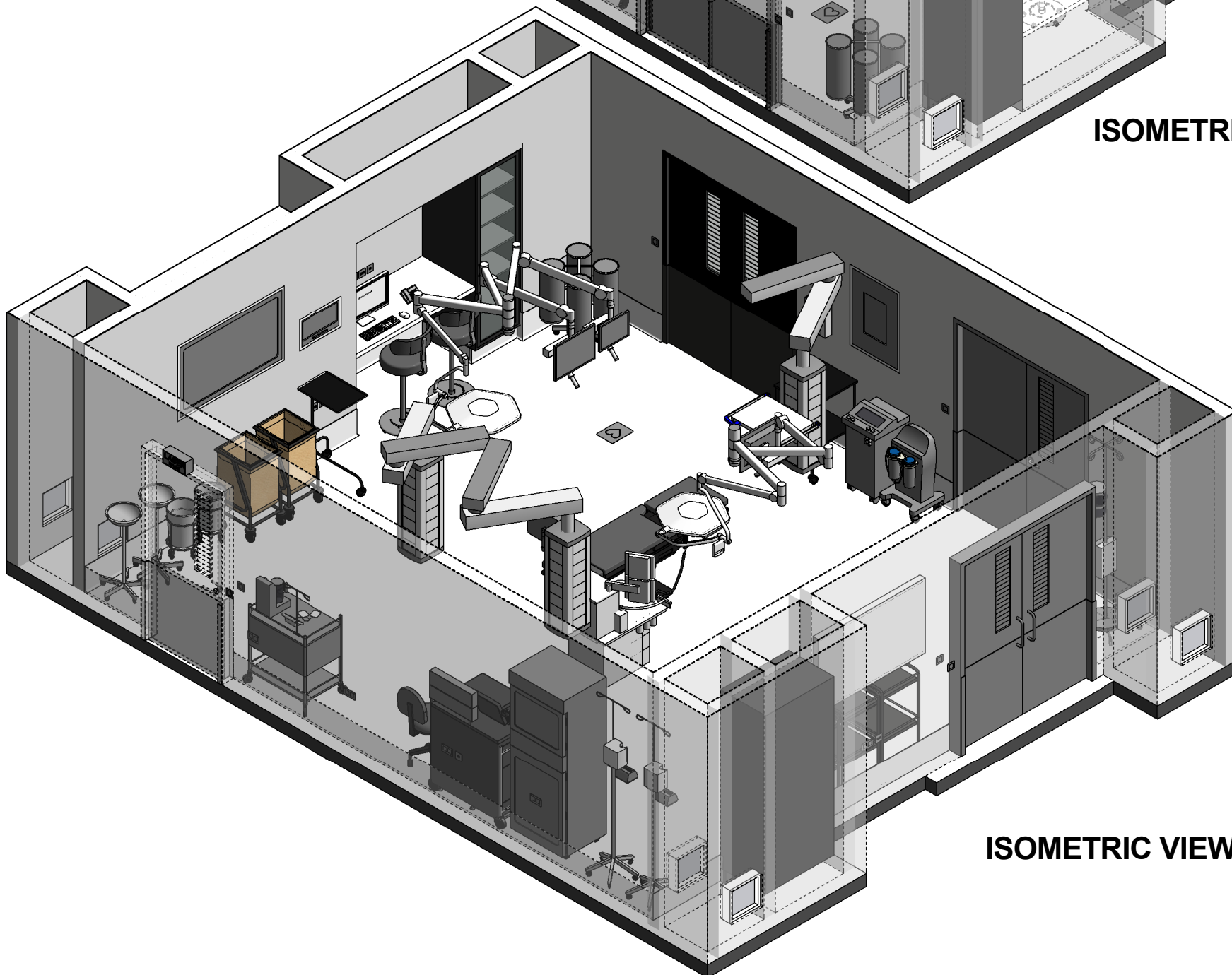
or-tr-i

Room Name

Operating Room - Transplant



ISOMETRIC VIEW 1



ISOMETRIC VIEW 2

REV	DESCRIPTION	DATE	BY	REV	DESCRIPTION	DATE	BY	COMPATIBILITY																				
1	FIRST ISSUE	27.01.23	AK					iHFG																				
								<table border="1"> <thead> <tr> <th>DESIGNED</th> <th>APPROVED</th> <th>DATE</th> <th>SCALE(S)</th> <th>SHEET</th> </tr> </thead> <tbody> <tr> <td>AK</td> <td>RH</td> <td>27.01.23</td> <td></td> <td>4 OF 4</td> </tr> <tr> <td colspan="2">REVIT FILE NAME</td> <td colspan="2">PAPER DRAWING ID</td> <td>ISSUE</td> </tr> <tr> <td colspan="2">or-tr-i</td> <td colspan="2">or-tr-i-4</td> <td>1</td> </tr> </tbody> </table>	DESIGNED	APPROVED	DATE	SCALE(S)	SHEET	AK	RH	27.01.23		4 OF 4	REVIT FILE NAME		PAPER DRAWING ID		ISSUE	or-tr-i		or-tr-i-4		1
DESIGNED	APPROVED	DATE	SCALE(S)	SHEET																								
AK	RH	27.01.23		4 OF 4																								
REVIT FILE NAME		PAPER DRAWING ID		ISSUE																								
or-tr-i		or-tr-i-4		1																								