

# iHFG Standard Components

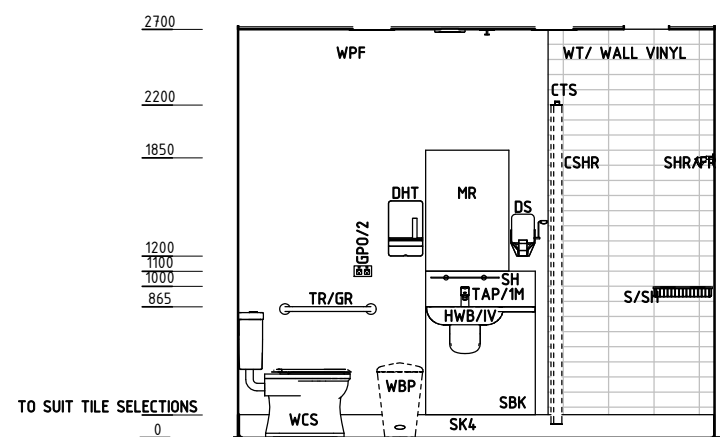
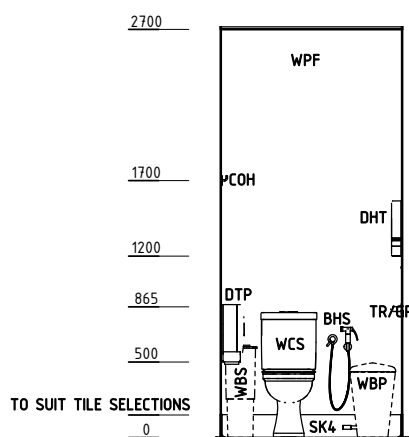
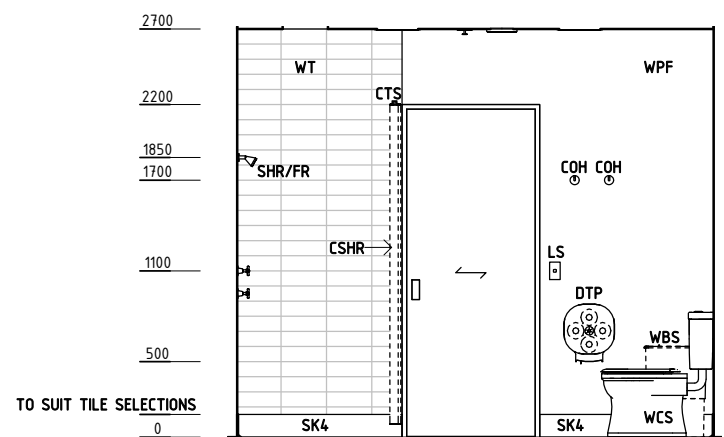
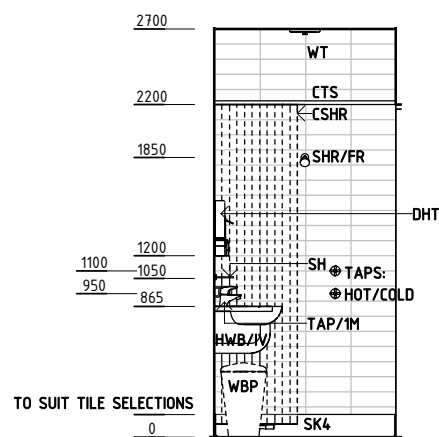
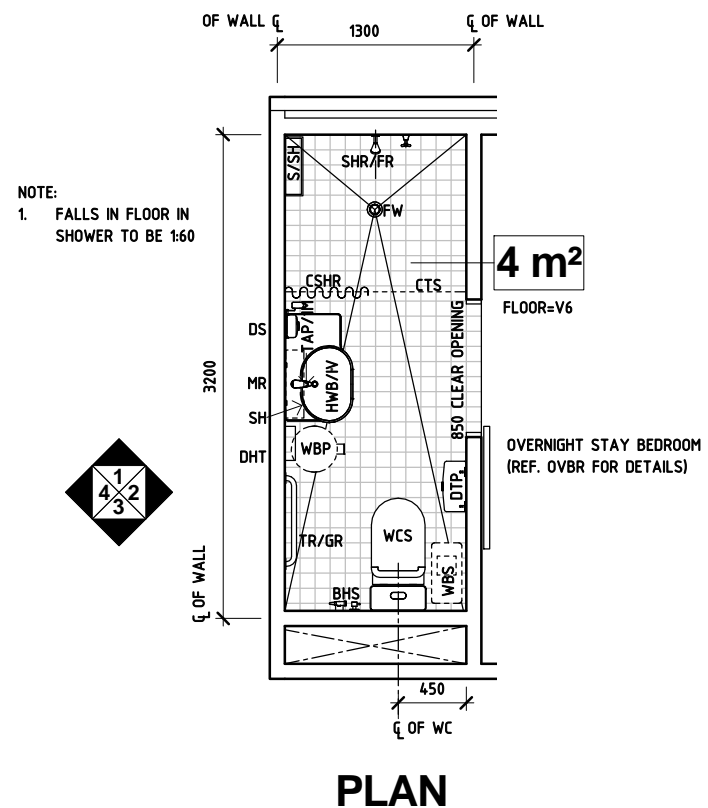
## Room Layout Sheet

Room Name | Overnight Stay - Ensuite, 4m<sup>2</sup>

RLS Room Code OVES-4-I  
RDS Room Code OVES-4-I

### Abbreviations

BHS	BIDET HANDSET
COH	COAT HOOK
CSHR	CURTAIN, SHOWER
CTS	CURTAIN TRACK: SHOWER
DHT	DISPENSER - HAND TOWEL
DS	DISPENSER - SOAP
DTP	DISPENSER - TOILET PAPER
FW	FLOOR WASTE
GPO/2	GENERAL POWER OUTLET - DOUBLE
HWB/IV	HAND WASH BASIN: INTEGRAL VANITY
LS	LIGHT SWITCH
MR	MIRROR
S/SH	SOAP AND SHAMPOO HOLDER
SBK	SPLASHBACK
SH	SHELF
SHR/FR	SHOWER: FIXED ROSE
TAP/1M	TAPWARE SINGLE MIXTURE LEVER
TR/GR	TOWEL RAIL /GRAB RAIL
WBP	WASTE BIN, PAPER
WBS	WASTE BIN, SANITARY
WCS	WATER CLOSET: STANDARD
SK4	FLOOR VINYL COVERED SKIRTING
WPF	WALL PAINT FINISH
WT	WALL TILES
V6	VINYL FLOORING, NON-SLIP TEXTURED



REV	DESCRIPTION	DATE	BY	REV	DESCRIPTION	DATE	BY	REV	DESCRIPTION	DATE	BY
1	FIRST ISSUE #	19.06.2015	NB								

# iHFG Standard Components

## Room Layout Sheet

Room Name | Overnight Stay - Ensuite, 4m<sup>2</sup>

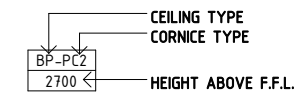
RLS Room Code OVES-4-I  
RDS Room Code OVES-4-I

### GENERAL NOTES:

THIS DRAWING TO BE READ IN CONJUNCTION WITH R.D.S. (ROOM DATA SHEETS) WHICH TAKES PRECEDENCE.

ALL SERVICES INDICATED ARE INDICATIVE AND SUBJECTED TO DETAILED PROJECT SPECIFIC ENGINEERING DESIGN.

### CEILING LEGEND:



WPT-PC4 | WATER RESISTANT, DROP IN TILES WITH POWDERCOAT  
ALUMINIUM CORNICE, SHADOW LINE  
TILE CEILING GRID (1200 x 600)  
GRID LINE

### ELECTRICAL LEGEND:

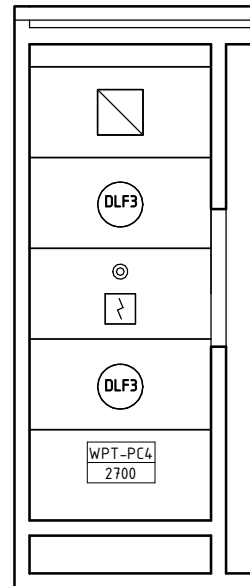
DLF3 | FLUORESCENT DOWNLIGHT - RECESSED

### MECHANICAL LEGEND:

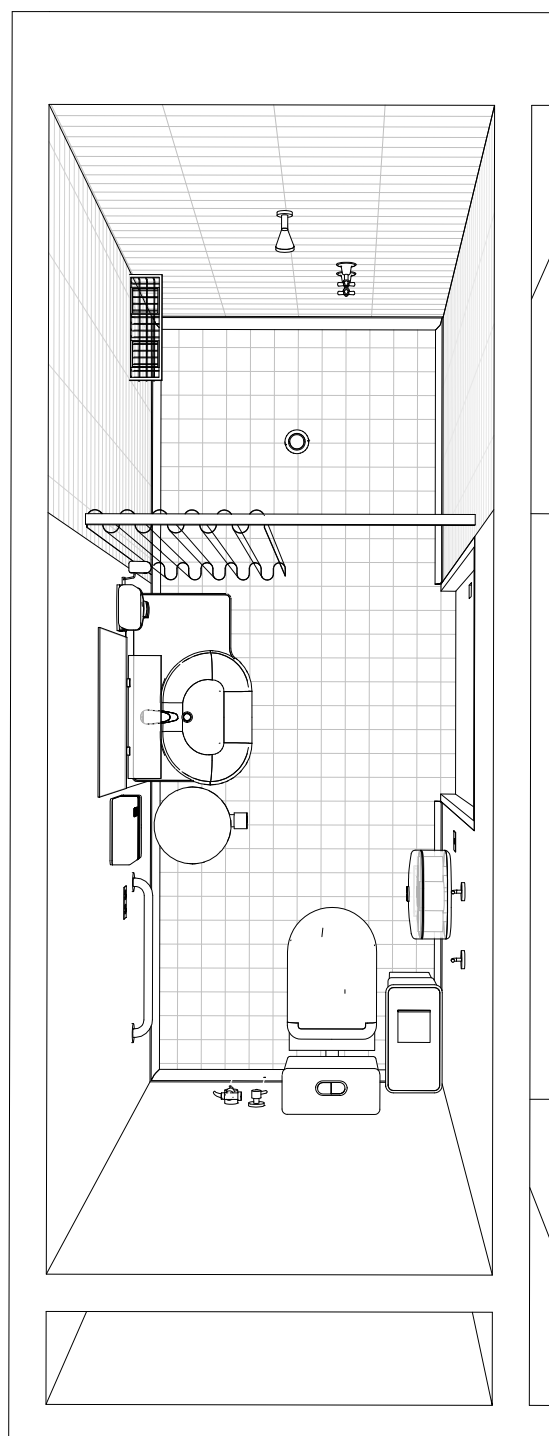
EXHAUST

### FIRE SERVICES LEGEND:

SMOKE DETECTOR  
SPRINKLER



REFLECTED CEILING PLAN



PERSPECTIVE - PLAN VIEW

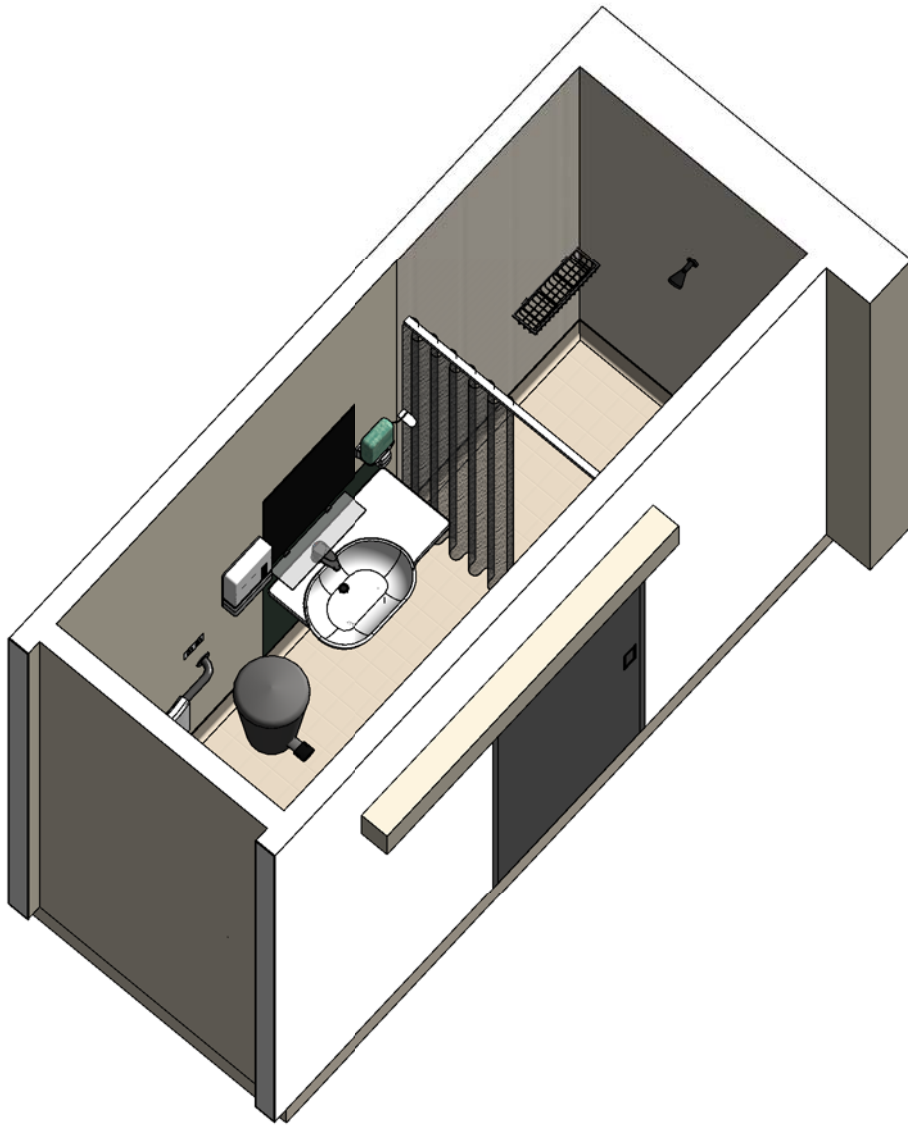
REV	DESCRIPTION	DATE	BY	REV	DESCRIPTION	DATE	BY	REV	DESCRIPTION	DATE	BY
1	FIRST ISSUE #	19.06.2015	NB								

# iHFG Standard Components

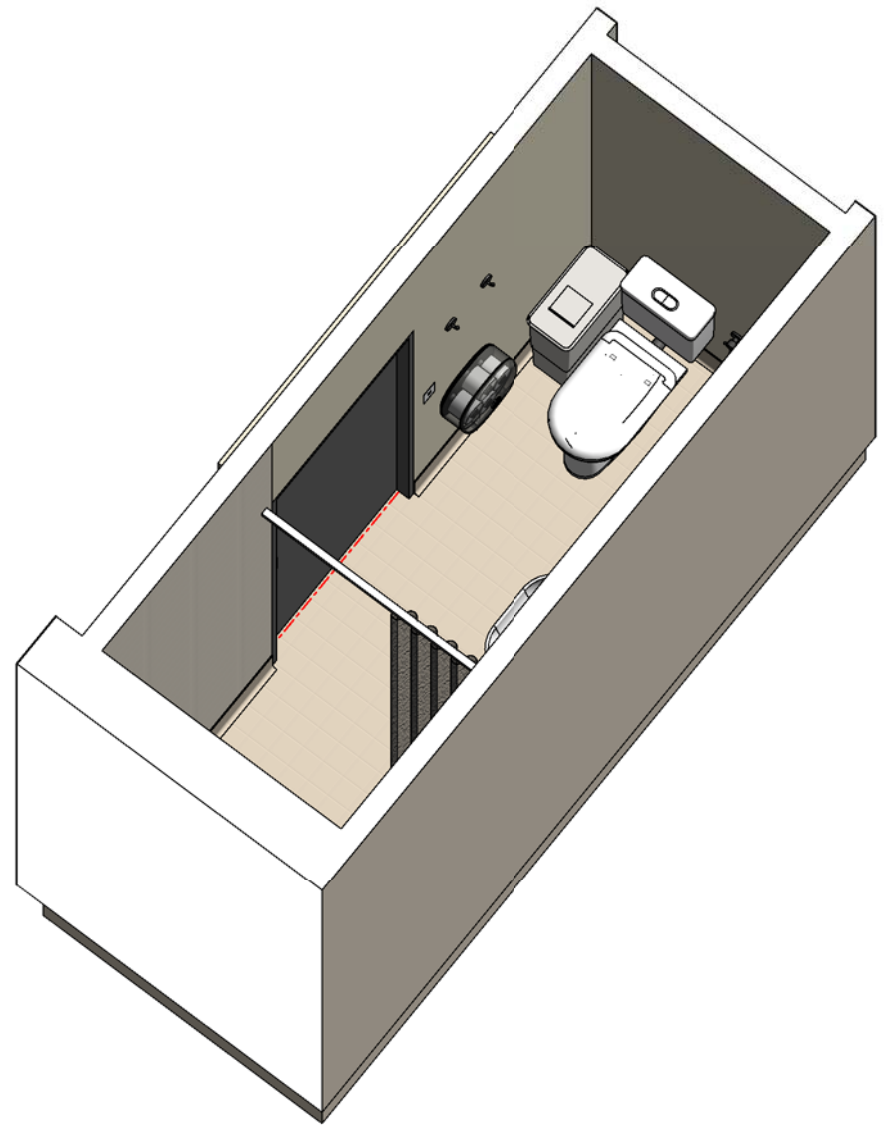
Room Layout Sheet

Room Name | Overnight Stay - Ensuite, 4m<sup>2</sup>

RLS Room Code OVES-4-I  
RDS Room Code OVES-4-I



**ISOMETRIC VIEW 01**



**ISOMETRIC VIEW 02**



**PERSPECTIVE 01**



**PERSPECTIVE 02**

REV	DESCRIPTION	DATE	BY	REV	DESCRIPTION	DATE	BY	REV	DESCRIPTION	DATE	BY
1	FIRST ISSUE #	19.06.2015	NB								



The International Health Facility Guidelines recommends the use of HFBS “Health Facility Briefing System” to edit all room data sheet information for your project.

HFBS provides edit access to all iHFG standard rooms, and departments, and more than 100 custom report templates.

## HFBS Health Facility Briefing System



### Briefing Module

The Health Facility Briefing System (HFBS) has numerous modules available via annual subscription. It suits healthcare Architects, Medical Planners, Equipment Planners Project Managers and Health Authorities.

Use the HFBS Briefing Module to quickly drag in health facility departments or pre-configured room templates from the iHFG standard, edit the room features such as finishes, furniture, fittings, fixtures, medical equipment, engineering services. The system can print or download as PDF more than 100 custom reports including room data sheets, schedules, and more...

To learn more about the HFBS web-based Healthcare Briefing and Design Software and to obtain editable versions of the “Standard Components” including Room Data Sheets (RDS) and Room Layout Sheets (RLS) offered on the iHFG website, signup for HFBS using the link below.

**Get Started Now:**  
[hfbs.healthdesign.com.au](http://hfbs.healthdesign.com.au)

- ✓ iHFG Room Data Sheets and Departments are instantly editable in the HFBS software available online.
- ✓ You can access hundreds of report templates to print your iHFG room data in HFBS.
- ✓ HFBS has a onetime free 3 day trial available to all new users.

**Get Started Now:**  
[hfbs.healthdesign.com.au](http://hfbs.healthdesign.com.au)



## HFBS

Health Facility Briefing System

[hfbsinfo.com](http://hfbsinfo.com) | [techsupport@healthdesign.com.au](mailto:techsupport@healthdesign.com.au)