

iHFG Standard Components

Room Layout Sheet

RLS Room Code

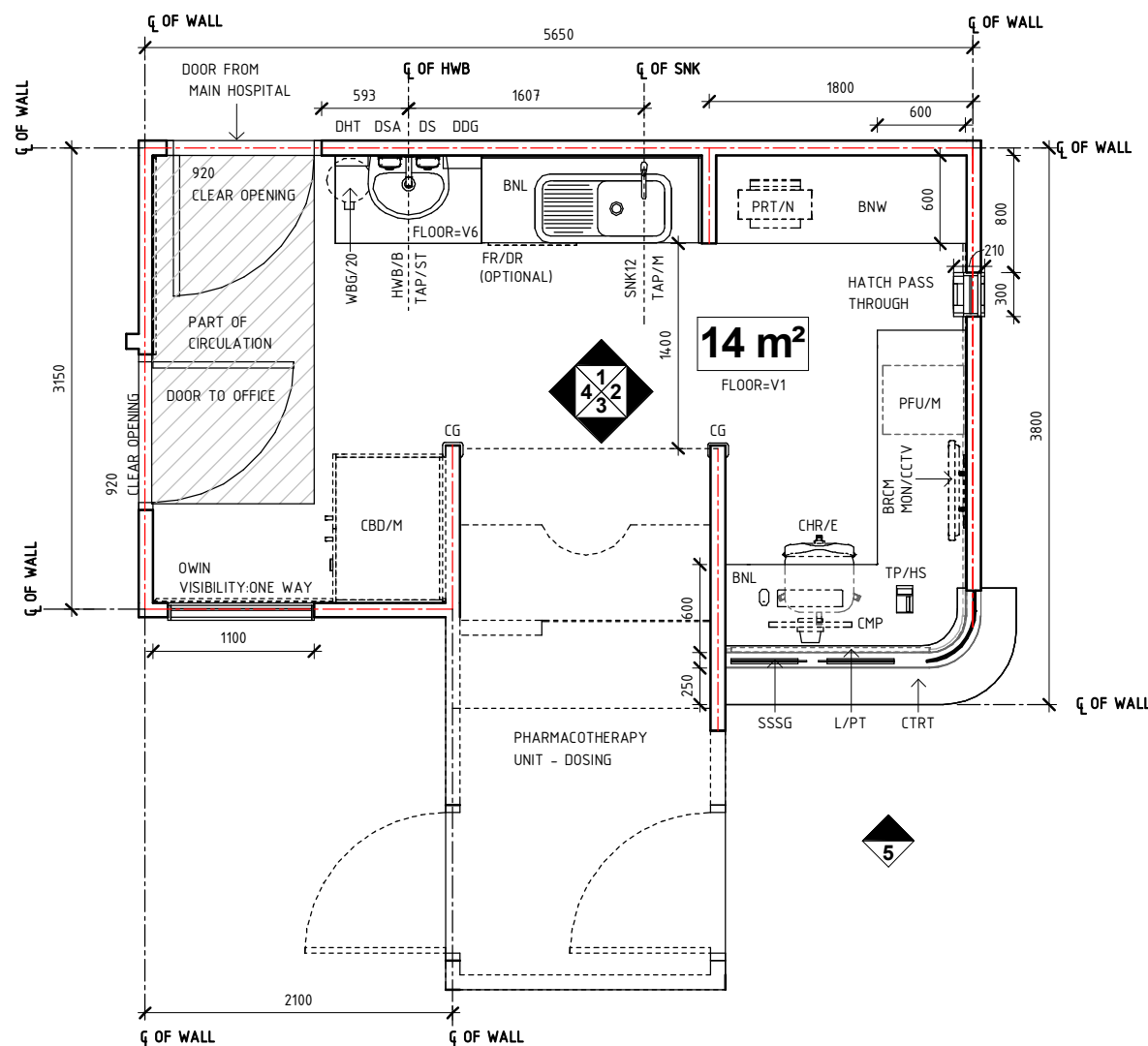
phco-disp-i

RDS Room Code

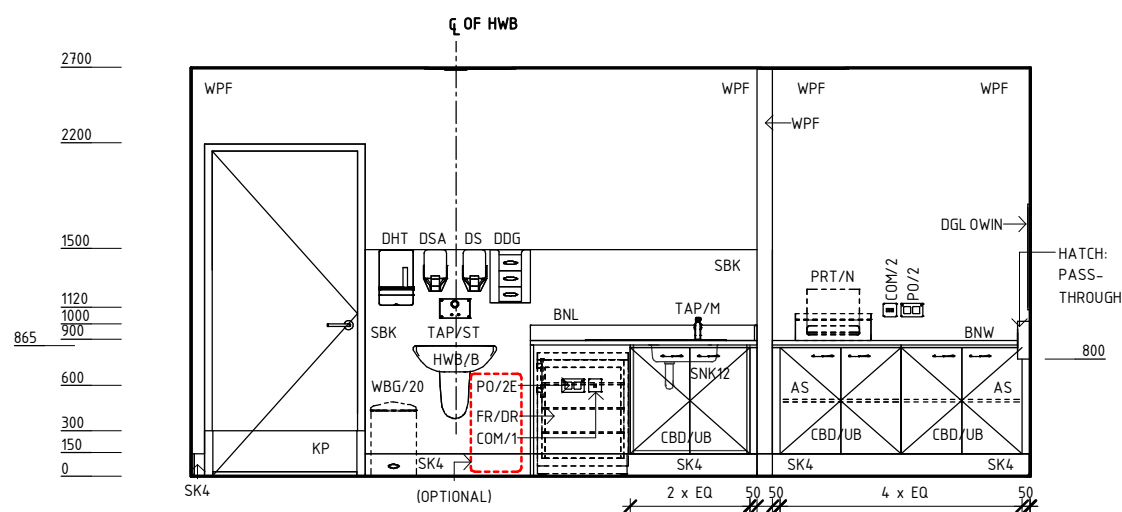
phco-disp-i

Room Name **Pharmacotherapy Unit - Dispensing**

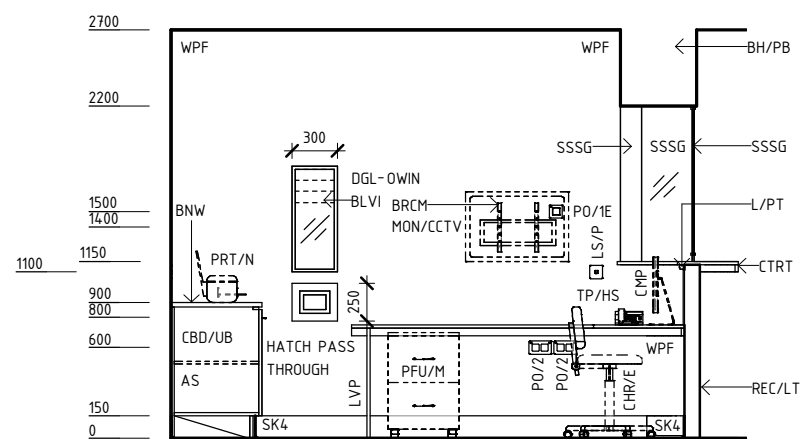
AS	ADJUSTABLE SHELF
BH/PB	BULKHEAD - PLASTERBOARD, PAINT FINISH
BLVI	BLIND - VENETIAN, INTEGRAL
BNL	BENCH - LAMINATE
BNW	BENCH - WORKSTATION
BRCM	BRACKET - MONITOR
CBD/M	CUPBOARD - MEDICATION, LOCKABLE
CBD/UB	CUPBOARD - UNDER BENCH
CG	CORNER GUARD
CHR/E	CHAIR - ERGONOMIC, OFFICE
CMP	COMPUTER
COM/1	COMMUNICATION OUTLET - SINGLE
COM/2	COMMUNICATION OUTLET - DOUBLE
CTRT	COUNTER TOP
DDG	DISPENSER - DISPOSABLE GLOVES
DGL	DOUBLE GLAZED
DHT	DISPENSER - PAPER HAND TOWEL
DS	DISPENSER - SOAP
DSA	DISPENSER - SOAP, ANTISEPTIC
FR/DR	FRIDGE - DRUG
HWB/B	HAND WASH BASIN - TYPE 'B'
KP	KICKPLATE
L/PT	LIGHT - PELMET TASK LIGHT
LS/P	LIGHT SWITCH - PELMET TASK LIGHT
LVP	LAMINATE VERTICAL SUPPORT PANEL
MON/CCTV	MONITOR - CLOSED CIRCUIT TELEVISION
OWIN	OBSERVATION WINDOW
PFU/M	PEDESTAL FILING UNIT - MOBLE
PO/1E	POWER OUTLET - EMERGENCY, SINGLE
PO/2	POWER OUTLET - DOUBLE
PO/2E	POWER OUTLET - EMERGENCY, DOUBLE
PRT/N	PRINTER - NETWORKED
REC/LT	RECEPTION DESK - LAMINATE/ TIMBER
SBK	SPLASHBACK
SK4	FLOOR VINYL COVERED SKIRTING
SNK12	SINK WITH DRAINER - SINGLE
SSSG	SECURITY SCREEN - SAFETY GLASS
TAP/M	TAPWARE - MIXER
TAP/ST	TAPWARE - SENSOR TAP
TP/HS	TELEPHONE - HANDSET, STANDARD
V1	VINYL FLOORING, STANDARD SLIP RESISTANT
V6	VINYL FLOORING, NON SLIP - TEXTURED
WBG/20	WASTE BIN - GENERAL, 20 LITRE
WPF	WALL PAINT FINISH



PLAN



ELEVATION 1



ELEVATION 2

REV	DESCRIPTION	DATE	BY	REV	DESCRIPTION	DATE	BY	COMPATIBILITY
1	FIRST ISSUE	24.10.10	LL	4	GENERAL REVISION	25.05.23	SS	
2	GENERAL REVISION	30.08.11	SK					
3	GENERAL REVISION	31.10.12	CT					



International Health Facility Guidelines at:
www.healthdesign.com.au/iHFG
 Editable version of Standard Components on
 Health Facility Briefing System (HFBS) at:
www.healthdesign.com.au ©TAHPI



DESIGNED	APPROVED	DATE	SCALE(S)	SHEET
SS	SA	25.05.23	1 : 50	1 OF 4
REVIT FILE NAME		PAPER DRAWING ID		ISSUE
phco-disp-i		phco-disp-i-1		4

iHFG Standard Components

Room Layout Sheet

RLS Room Code

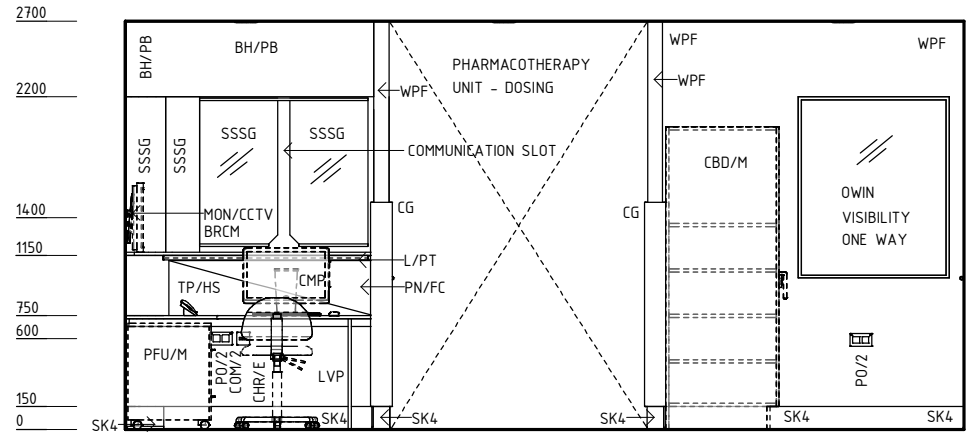
phco-disp-i

RDS Room Code

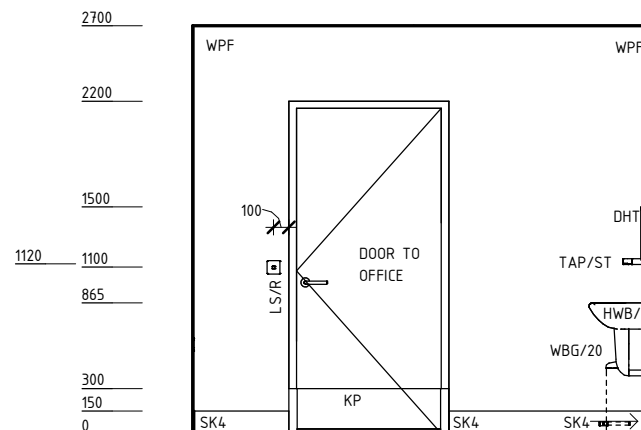
phco-disp-i

Room Name **Pharmacotherapy Unit - Dispensing**

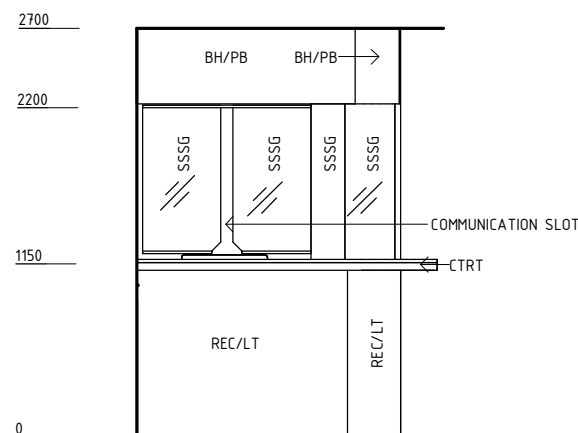
BH/PB	BULKHEAD - PLASTERBOARD, PAINT FINISH
BRCM	BRACKET - MONITOR
CBD/M	CUPBOARD - MEDICATION, LOCKABLE
CG	CORNER GUARD
CHR/E	CHAIR - ERGONOMIC, OFFICE
CMP	COMPUTER
COM/2	COMMUNICATION OUTLET - DOUBLE
CTRT	COUNTER TOP
DHT	DISPENSER - PAPER HAND TOWEL
HWB/B	HAND WASH BASIN - TYPE 'B'
KP	KICKPLATE
L/PT	LIGHT - PELMET TASK LIGHT
LS/R	LIGHT SWITCH - ROOM
LVP	LAMINATE VERTICAL SUPPORT PANEL
MON/CCTV	MONITOR - CLOSED CIRCUIT TELEVISION
OWIN	OBSERVATION WINDOW
PFU/M	PEDESTAL FILING UNIT - MOBLE
PN/FC	PINBOARD - FABRIC COVERED
PO/2	POWER OUTLET - DOUBLE
REC/LT	RECEPTION DESK - LAMINATE/ TIMBER
SK4	FLOOR VINYL COVERED SKIRTING
SSSG	SECURITY SCREEN - SAFETY GLASS
TAP/ST	TAPWARE - SENSOR TAP
TP/HS	TELEPHONE - HANDSET, STANDARD
WBG/20	WASTE BIN - GENERAL, 20 LITRE
WPF	WALL PAINT FINISH



ELEVATION 3



ELEVATION 4



ELEVATION 5

REV	DESCRIPTION	DATE	BY	REV	DESCRIPTION	DATE	BY	COMPATIBILITY
1	FIRST ISSUE	24.10.10	LL	4	GENERAL REVISION	25.05.23	SS	
2	GENERAL REVISION	30.08.11	SK					
3	GENERAL REVISION	31.10.12	CT					

International Health Facility Guidelines	International Health Facility Guidelines at: www.healthdesign.com.au/iHFG Editable version of Standard Components on Health Facility Briefing System (HFBS) at: www.healthdesign.com.au ©TAHPI		DESIGNED SS	APPROVED SA	DATE 25.05.23	SCALE(S) 1 : 50	SHEET 2 OF 4
	REVIT FILE NAME phco-disp-i		PAPER DRAWING ID phco-disp-i-2		ISSUE 4		

This document is for advisory purpose only

iHFG Standard Components

Room Layout Sheet

RLS Room Code

phco-disp-i

RDS Room Code

phco-disp-i

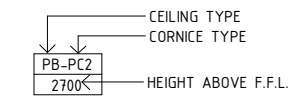
Room Name **Pharmacotherapy Unit - Dispensing**

GENERAL NOTES:

THIS DRAWING TO BE READ IN CONJUNCTION WITH R.D.S. (ROOM DATA SHEETS) WHICH TAKES PRECEDENCE.

ALL SERVICES INDICATED ARE INDICATIVE AND SUBJECTED TO DETAILED PROJECT SPECIFIC ENGINEERING DESIGN.

CEILING LEGEND:

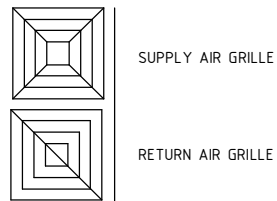


- BH/PB | PLASTERBOARD BULKHEAD, PAINT FINISH
- PB-PC5 | PLASTERBOARD FLUSH SET CEILING, POWDERCOAT ALUMINIUM CORNICE, FLUSHED AGAINST WALL
- | GRID LINE

ELECTRICAL LEGEND:

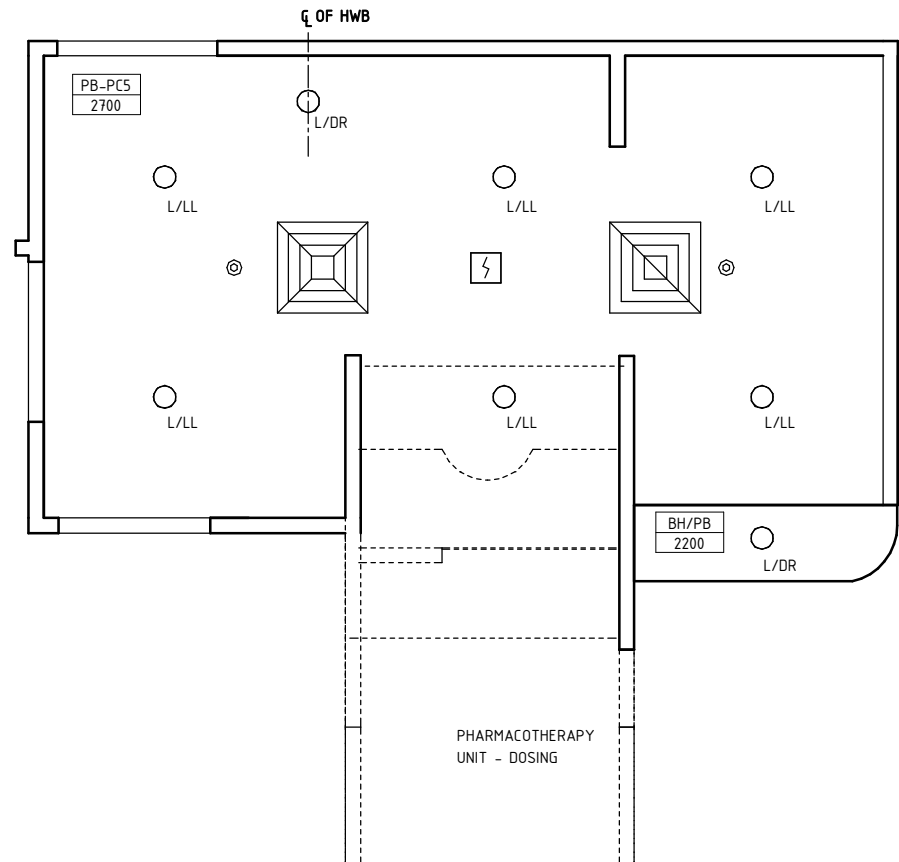
- L/DR | LIGHT - DOWNLIGHT, RECESSED
- L/LL | LIGHT - LED LIGHT

MECHANICAL LEGEND:



FIRE SERVICES LEGEND:

- ⚡ | SMOKE DETECTOR
- ⊙ | SPRINKLER



REFLECTED CEILING PLAN

REV	DESCRIPTION	DATE	BY	REV	DESCRIPTION	DATE	BY	COMPATIBILITY				
1	FIRST ISSUE	24.10.10	LL	4	GENERAL REVISION	25.05.23	SS	iHFG				
2	GENERAL REVISION	30.08.11	SK									
3	GENERAL REVISION	31.10.12	CT									
								DESIGNED	APPROVED	DATE	SCALE(S)	SHEET
								SS	SA	25.05.23	1 : 50	3 OF 4
								REVIT FILE NAME		PAPER DRAWING ID		ISSUE
								phco-disp-i		phco-disp-i-3		4

iHFG Standard Components

Room Layout Sheet

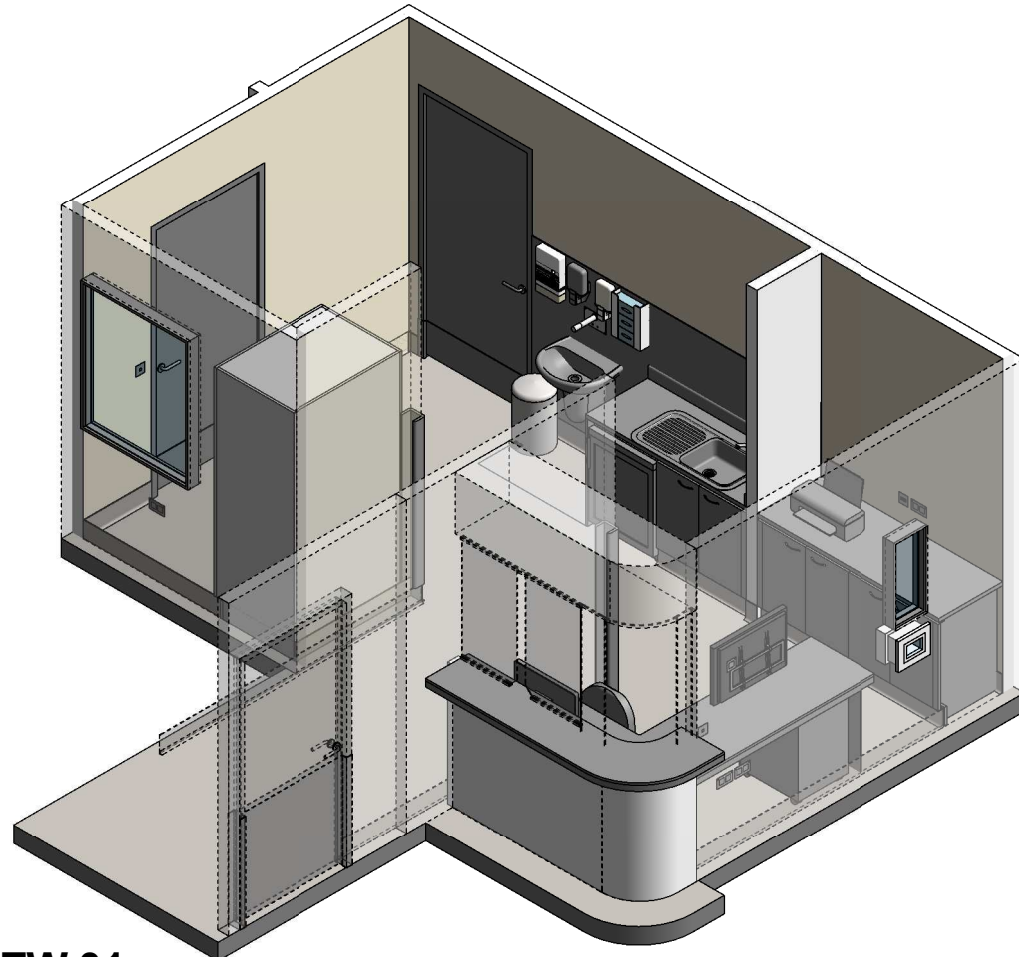
Room Name | **Pharmacotherapy Unit - Dispensing**

RLS Room Code

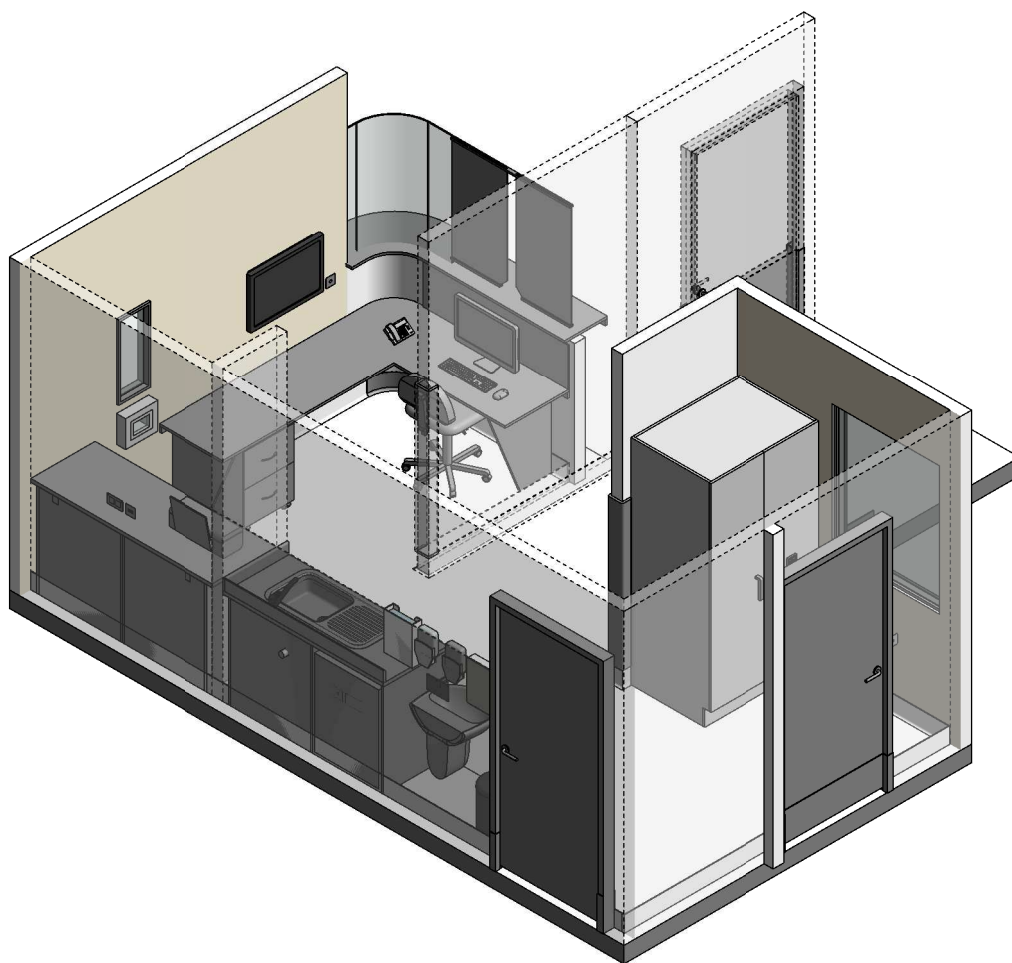
phco-disp-i

RDS Room Code




phco-disp-i



ISOMETRIC VIEW 01



ISOMETRIC VIEW 02

REV	DESCRIPTION	DATE	BY	REV	DESCRIPTION	DATE	BY	COMPATIBILITY															
1	FIRST ISSUE	24.10.10	LL	4	GENERAL REVISION	25.05.23	SS																
2	GENERAL REVISION	30.08.11	SK																				
3	GENERAL REVISION	31.10.12	CT																				
 International Health Facility Guidelines								<table border="1"> <thead> <tr> <th>DESIGNED</th> <th>APPROVED</th> <th>DATE</th> <th>SCALE(S)</th> <th>SHEET</th> </tr> </thead> <tbody> <tr> <td>SS</td> <td>SA</td> <td>25.05.23</td> <td></td> <td>4 OF 4</td> </tr> <tr> <td colspan="2"> REVIT FILE NAME phco-disp-i </td> <td colspan="2"> PAPER DRAWING ID phco-disp-i-4 </td> <td> ISSUE 4 </td> </tr> </tbody> </table>	DESIGNED	APPROVED	DATE	SCALE(S)	SHEET	SS	SA	25.05.23		4 OF 4	REVIT FILE NAME phco-disp-i		PAPER DRAWING ID phco-disp-i-4		ISSUE 4
DESIGNED	APPROVED	DATE	SCALE(S)	SHEET																			
SS	SA	25.05.23		4 OF 4																			
REVIT FILE NAME phco-disp-i		PAPER DRAWING ID phco-disp-i-4		ISSUE 4																			
<small>International Health Facility Guidelines at: www.healthdesign.com.au/iHFG Editable version of Standard Components on Health Facility Briefing System (HFBS) at: www.healthdesign.com.au ©TAHPI</small>																							

This document is for advisory purpose only