

iHFG Standard Components

Room Layout Sheet

RLS Room Code

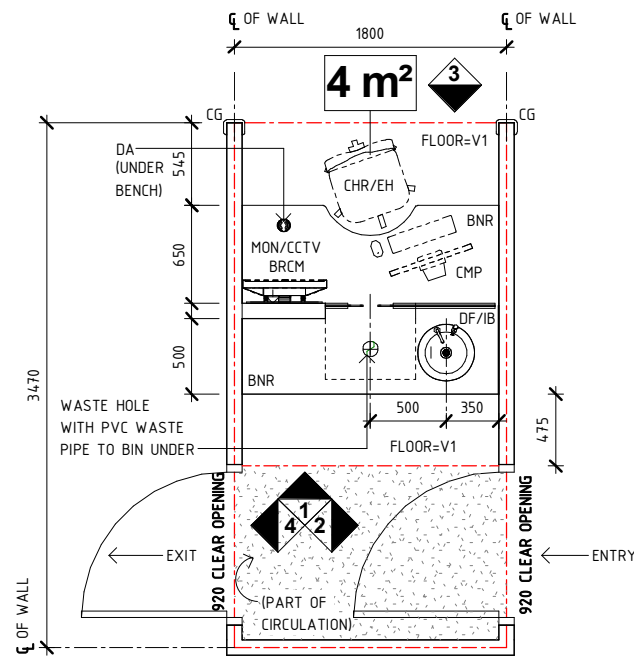
phco-dos -i

RDS Room Code

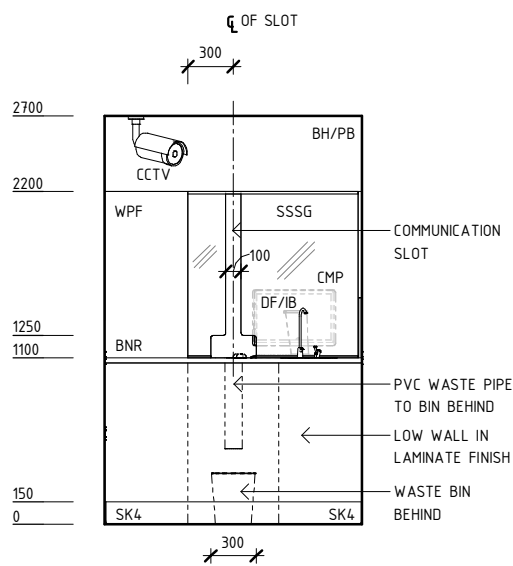
phco-dos -i

Room Name **Pharmacotherapy Unit - Dosing**

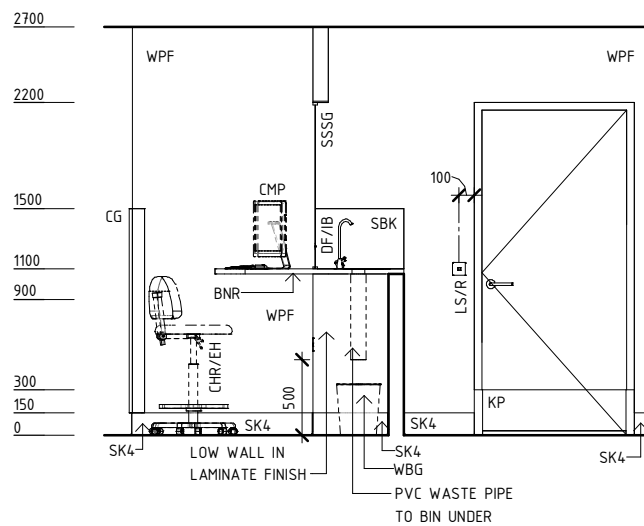
BH/PB	BULKHEAD - PLASTERBOARD, PAINT FINISH
BNR	BENCH - RESINATE
BRCM	BRACKET - MONITOR
CCTV	CAMERA, CLOSED CIRCUIT TELEVISION
CG	CORNER GUARD
CHR/EH	CHAIR - ERGONOMIC, HIGH
CMP	COMPUTER
COM/1	COMMUNICATION OUTLET - SINGLE
COM/2	COMMUNICATION OUTLET - DOUBLE
DA	DURESS ALARM
DF/IB	DRINKING FOUNTAIN - IN BENCH
KP	KICKPLATE
L/LL	LIGHT - LED LIGHT
LS/R	LIGHT SWITCH - ROOM
MON/CCTV	MONITOR - CLOSED CIRCUIT TELEVISION
PO/1	POWER OUTLET - SINGLE
PO/1E	POWER OUTLET - EMERGENCY, SINGLE
PO/2	POWER OUTLET - DOUBLE
SBK	SPLASHBACK
SK4	FLOOR VINYL COVED SKIRTING
SSSG	SECURITY SCREEN - SAFETY GLASS
V1	VINYL FLOORING, STANDARD SLIP RESISTANT
WBG	WASTE BIN - GENERAL
WPF	WALL PAINT FINISH



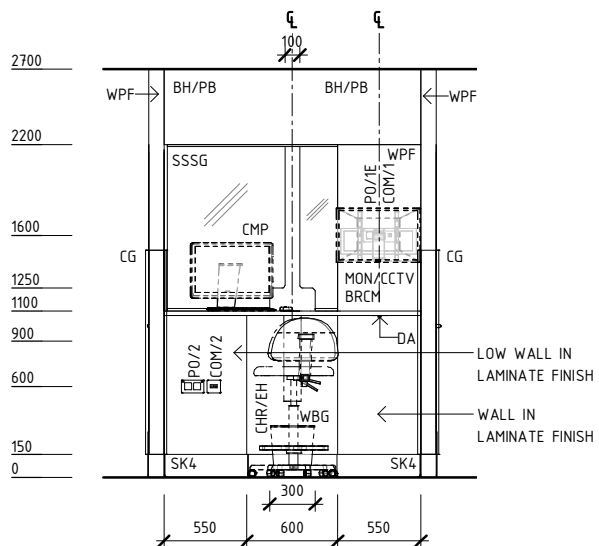
PLAN



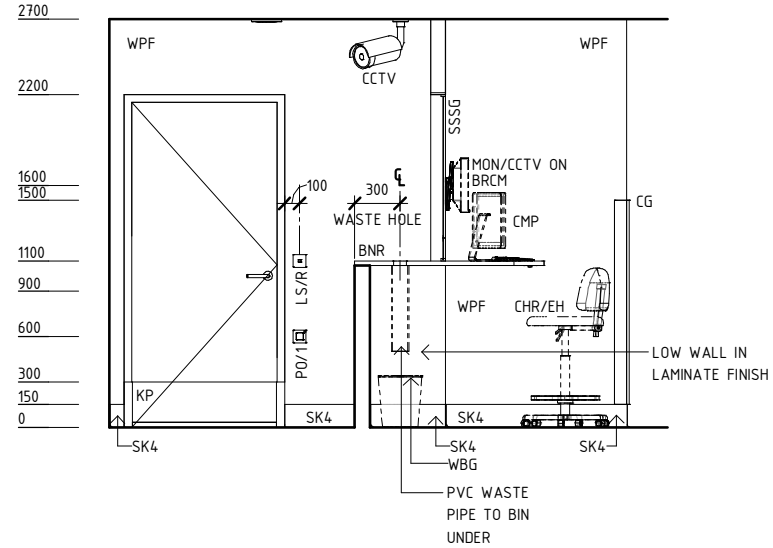
ELEVATION 1



ELEVATION 2



ELEVATION 3



ELEVATION 4

REV	DESCRIPTION	DATE	BY	REV	DESCRIPTION	DATE	BY	COMPATIBILITY
1	FIRST ISSUE	24.10.10	LL	4	GENERAL REVISION	17.01.24	JJ	
2	GENERAL REVISION	30.08.11	SK					
3	GENERAL REVISION	31.10.12	CT					



International Health Facility Guidelines at:
www.healthdesign.com.au/iHFG
 Editable version of Standard Components on
 Health Facility Briefing System (HFBS) at:
www.healthdesign.com.au@TAHPI



DESIGNED	APPROVED	DATE	SCALE(S)	SHEET
JJ	SA	17.01.24	1 : 50	1 OF 2
REVIT FILE NAME		PAPER DRAWING ID		ISSUE
phco-dos -i		phco-dos -i-1		4

This document is for advisory purpose only

iHFG Standard Components

Room Layout Sheet

Room Name | **Pharmacotherapy Unit - Dosing**

RLS Room Code

phco-dos -i

RDS Room Code

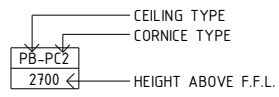
phco-dos -i

GENERAL NOTES:

THIS DRAWING TO BE READ IN CONJUNCTION WITH R.D.S. (ROOM DATA SHEETS) WHICH TAKES PRECEDENCE.

ALL SERVICES INDICATED ARE INDICATIVE AND SUBJECTED TO DETAILED PROJECT SPECIFIC ENGINEERING DESIGN.

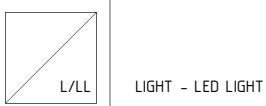
CEILING LEGEND:



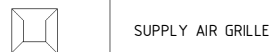
BH/PB | PLASTERBOARD BULKHEAD, PAINT FINISH
PB-PC3 | PLASTERBOARD FLUSH SET CEILING, PAINT FINISH WITH PLASTERBOARD SQUARE SET CORNICE

--- | GRID LINE

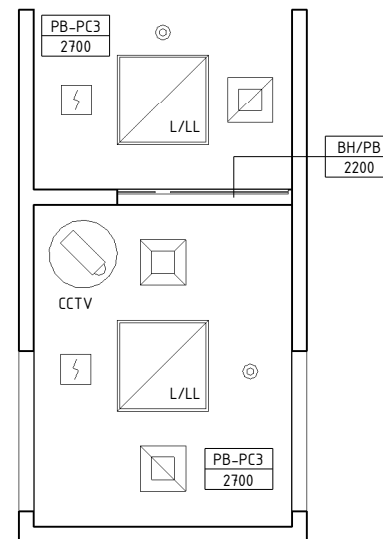
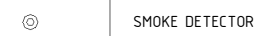
ELECTRICAL LEGEND:



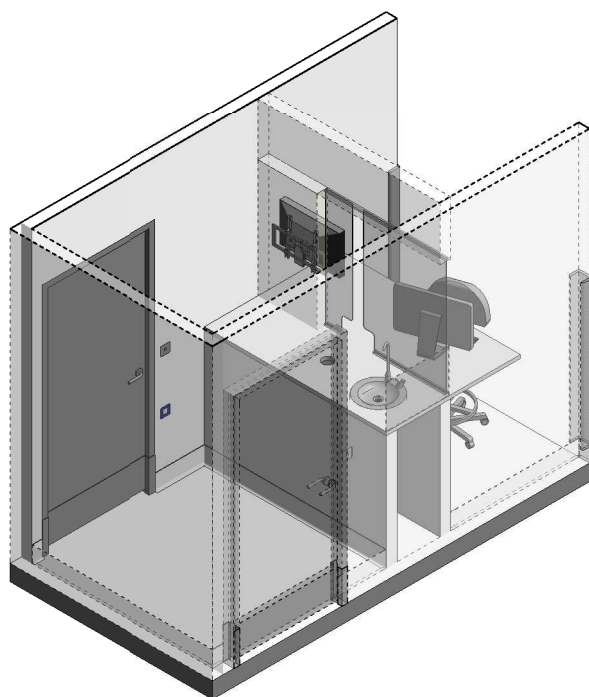
MECHANICAL LEGEND:



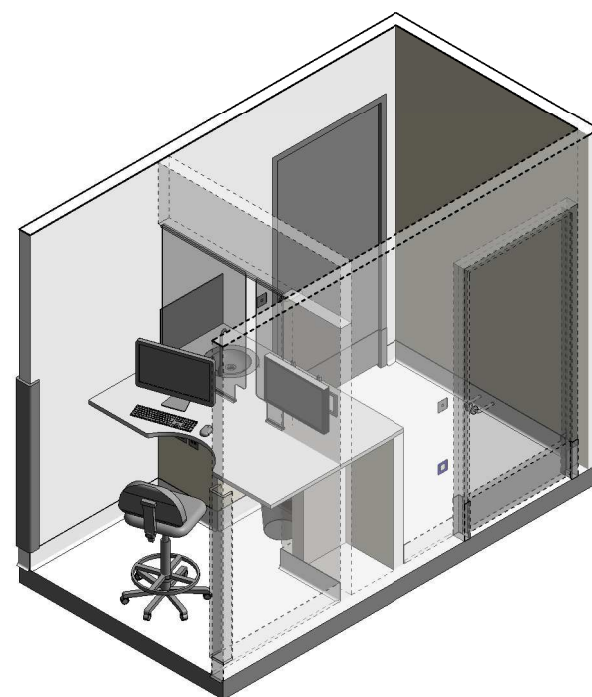
FIRE SERVICES LEGEND:



REFLECTED CEILING PLAN



ISOMETRIC VIEW 1



ISOMETRIC VIEW 2

REV	DESCRIPTION	DATE	BY	REV	DESCRIPTION	DATE	BY	COMPATIBILITY																				
1	FIRST ISSUE	24.10.10	LL	4	GENERAL REVISION	17.01.24	JJ																					
2	GENERAL REVISION	30.08.11	SK																									
3	GENERAL REVISION	31.10.12	CT																									
								<table border="1"> <thead> <tr> <th>DESIGNED</th> <th>APPROVED</th> <th>DATE</th> <th>SCALE(S)</th> <th>SHEET</th> </tr> </thead> <tbody> <tr> <td>JJ</td> <td>SA</td> <td>17.01.24</td> <td>1 : 50</td> <td>2 OF 2</td> </tr> <tr> <td colspan="2">REVIT FILE NAME</td> <td colspan="2">PAPER DRAWING ID</td> <td>ISSUE</td> </tr> <tr> <td colspan="2">phco-dos -i</td> <td colspan="2">phco-dos -i-2</td> <td>4</td> </tr> </tbody> </table>	DESIGNED	APPROVED	DATE	SCALE(S)	SHEET	JJ	SA	17.01.24	1 : 50	2 OF 2	REVIT FILE NAME		PAPER DRAWING ID		ISSUE	phco-dos -i		phco-dos -i-2		4
DESIGNED	APPROVED	DATE	SCALE(S)	SHEET																								
JJ	SA	17.01.24	1 : 50	2 OF 2																								
REVIT FILE NAME		PAPER DRAWING ID		ISSUE																								
phco-dos -i		phco-dos -i-2		4																								