

# iHFG Standard Components

## Room Layout Sheet

Room Name | **Plaster Room, 14m<sup>2</sup>**

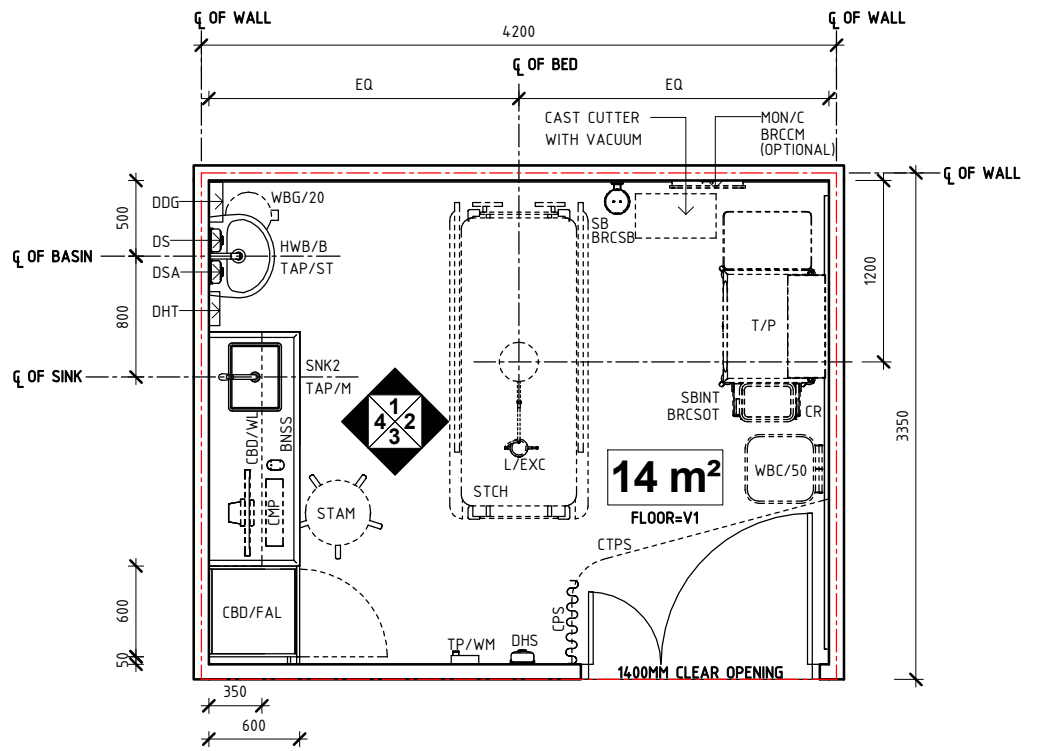
RLS Room Code

plst-14-i

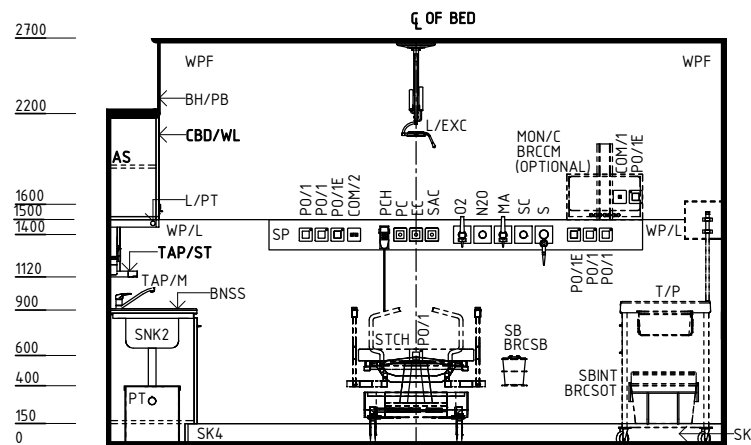
RDS Room Code

plst-14-i

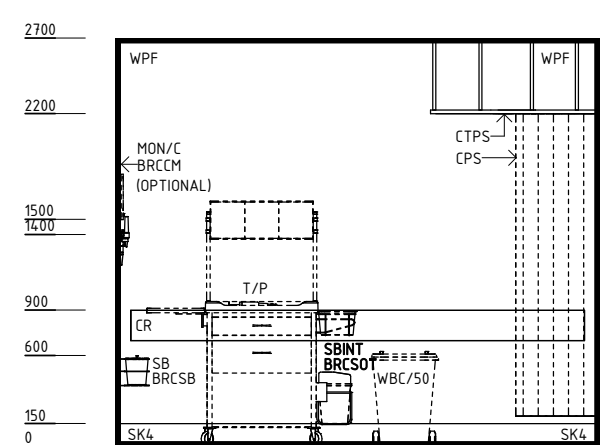
- AS ADJUSTABLE SHELF
- BH/PB BULKHEAD - PLASTERBOARD, PAINT FINISH
- BNSS BENCH - STAINLESS STEEL
- BRCCM BRACKET - CARDIAC MONITOR
- BRCSB BRACKET - SUCTION BOTTLE
- BRCSOT BRACKET - SHARPS ON TROLLEY
- CBD/FAL CUPBOARD - FULL HEIGHT, ADJUSTABLE SHELVES, LOCKABLE
- CBD/UB CUPBOARD - UNDER BENCH
- CBD/WL CUPBOARD - WALL MOUNTED, LOCKABLE
- CMP COMPUTER
- COM/1 COMMUNICATION OUTLET - SINGLE
- COM/2 COMMUNICATION OUTLET - DOUBLE
- CPS CURTAIN - PRIVACY SCREEN
- CR CRASH RAIL
- CTPS CURTAIN TRACK - PRIVACY SCREEN
- DDG DISPENSER - DISPOSABLE GLOVES
- DFP DOOR AND DOOR FRAME PROTECTION
- DHS DISPENSER - HAND SANITISER
- DHT DISPENSER - PAPER HAND TOWEL
- DS DISPENSER - SOAP
- DSA DISPENSER - SOAP, ANTISEPTIC
- EC EMERGENCY CALL
- HWB/B HAND WASH BASIN - TYPE 'B'
- L/EXC LIGHT - EXAMINATION, CEILING MOUNTED
- L/PT LIGHT - PELMET TASK LIGHT
- LS/P LIGHT SWITCH - PELMET TASK LIGHT
- LS/R LIGHT SWITCH - ROOM
- MA MEDICAL AIR
- MON/C MONITOR - CARDIAC
- N2O NITROUS OXIDE
- O2 OXYGEN
- OPS OBSERVATION PANEL WITH SLIDING PANEL
- PC PATIENT CALL
- PCH PATIENT CALL HANDSET
- PO/1 POWER OUTLET - SINGLE
- PO/1E POWER OUTLET - EMERGENCY, SINGLE
- PO/2 POWER OUTLET - DOUBLE
- PO/C POWER OUTLET - CLEANER'S
- PT PLASTER TRAP
- S SUCTION
- SAC STAFF ASSIST CALL
- SB SUCTION BOTTLE
- SBINT SHARPS BIN - ON TROLLEY
- SBK SPLASHBACK
- SC SCAVENGE OUTLET
- SK4 FLOOR VINYL COVED SKIRTING
- SNK2 SINK - 450x350x300D
- SP SERVICES PANEL
- STAM STOOL - ADJUSTABLE, MOBILE
- STCH STRETCHER
- T/P TROLLEY - PLASTER
- TAP/M TAPWARE - MIXER
- TAP/ST TAPWARE - SENSOR TAP
- TP/WM TELEPHONE - WALL MOUNTED
- V1 VINYL FLOORING, STANDARD SLIP RESISTANT
- WBC/50 WASTE BIN - CLINICAL, 50 LITRE
- WBG/20 WASTE BIN - GENERAL, 20 LITRE
- WP/L WALL PANEL, LAMINATE
- WPF WALL PAINT FINISH



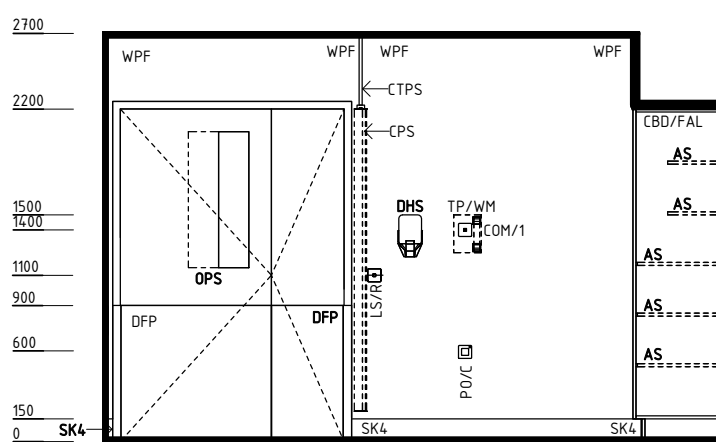
**PLAN**



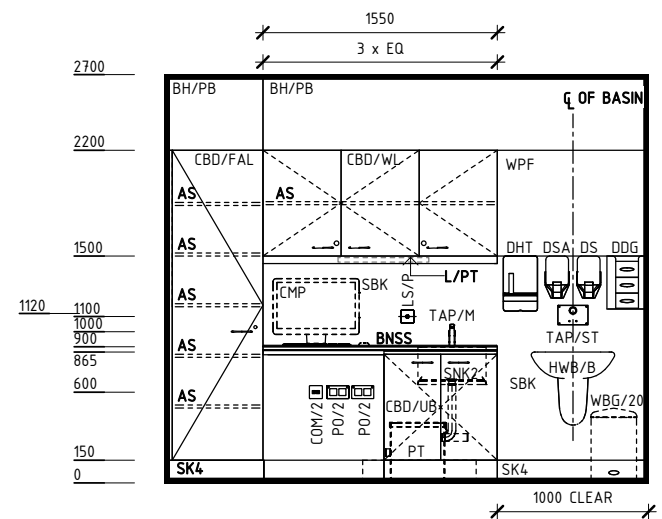
**ELEVATION 1**



**ELEVATION 2**



**ELEVATION 3**



**ELEVATION 4**

REV	DESCRIPTION	DATE	BY	REV	DESCRIPTION	DATE	BY	COMPATIBILITY
1	FIRST ISSUE	26.06.15	NB					
2	GENERAL REVISION	31.08.22	RA					



International Health Facility Guidelines at:  
[www.healthdesign.com.au/iHFG](http://www.healthdesign.com.au/iHFG)  
 Editable version of Standard Components on  
 Health Facility Briefing System (HFBS) at:  
[www.healthdesign.com.au](http://www.healthdesign.com.au) ©TAHPI



DESIGNED	APPROVED	DATE	SCALE(S)	SHEET
RA	RH	31.08.22	1 : 50	1 OF 3
REVIT FILE NAME		PAPER DRAWING ID		ISSUE
plst-14-i		plst-14-i-1		2

# iHFG Standard Components

## Room Layout Sheet

RLS Room Code

plst-14-i

RDS Room Code

plst-14-i

Room Name

Plaster Room, 14m<sup>2</sup>

### GENERAL NOTES:

THIS DRAWING TO BE READ IN CONJUNCTION WITH R.D.S. (ROOM DATA SHEETS) WHICH TAKES PRECEDENCE.

ALL SERVICES INDICATED ARE INDICATIVE AND SUBJECTED TO DETAILED PROJECT SPECIFIC ENGINEERING DESIGN.

### CEILING LEGEND:

	CEILING TYPE CORNICIE TYPE
	HEIGHT ABOVE F.F.L.
	BULKHEAD - PLASTERBOARD, PAINT FINISH
	PLASTERBOARD FLUSH SET CEILING, PAINT FINISH WITH PLASTERBOARD SQUARE SET CORNICIE
	GRID LINE

### ELECTRICAL LEGEND:

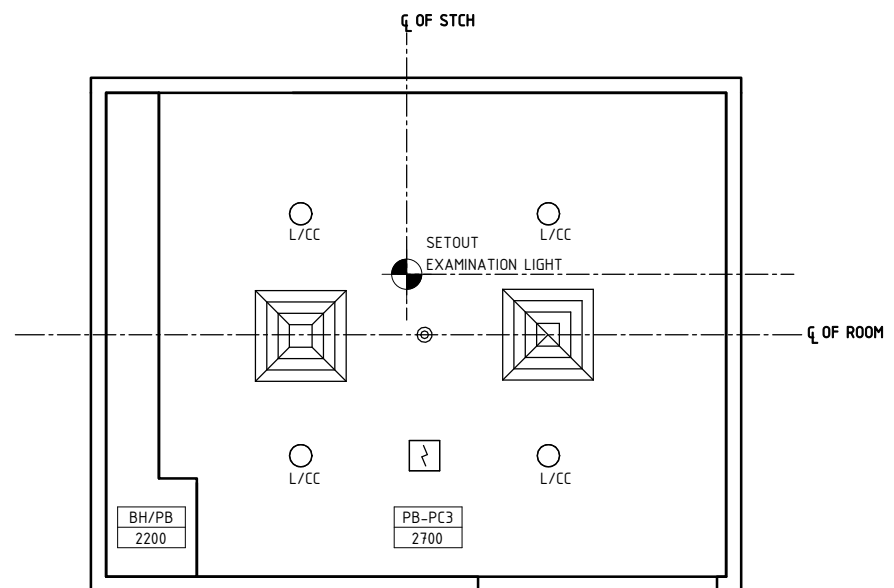
	LIGHT - COLOUR CORRECTED
--	--------------------------

### MECHANICAL LEGEND:

	SUPPLY AIR GRILLE
	EXHAUST GRILLE

### FIRE SERVICES LEGEND:

	SMOKE DETECTOR
	SPRINKLER



## REFLECTED CEILING PLAN

REV	DESCRIPTION	DATE	BY	REV	DESCRIPTION	DATE	BY	COMPATIBILITY
1	FIRST ISSUE	26.06.15	NB					iHFG
2	GENERAL REVISION	31.08.22	RA					

<b>International Health Facility Guidelines</b>	International Health Facility Guidelines at: <a href="http://www.healthdesign.com.au/iHFG">www.healthdesign.com.au/iHFG</a> Editable version of Standard Components on Health Facility Briefing System (HFBS) at: <a href="http://www.healthdesign.com.au">www.healthdesign.com.au</a> ©TAHPI			DESIGNED	APPROVED	DATE	SCALE(S)	SHEET
	RA	RH		26.10.22	1 : 50	2 OF 3		
REVIT FILE NAME		PAPER DRAWING ID		ISSUE				
plst-14-i		plst-14-i-2		2				

# iHFG Standard Components

Room Layout Sheet

RLS Room Code

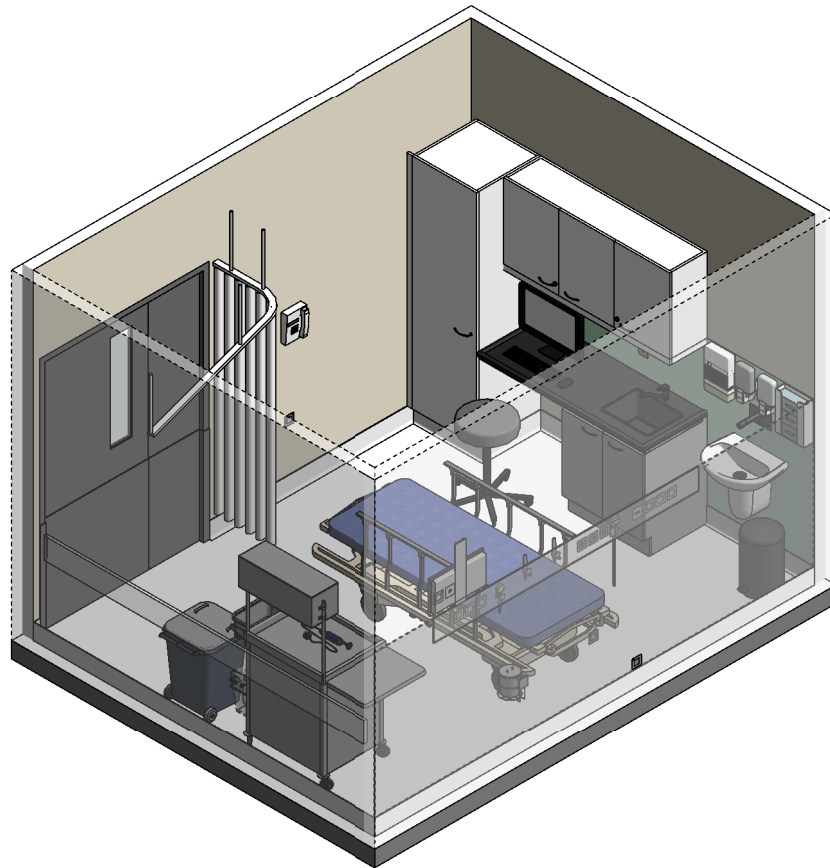
plst-14-i

RDS Room Code

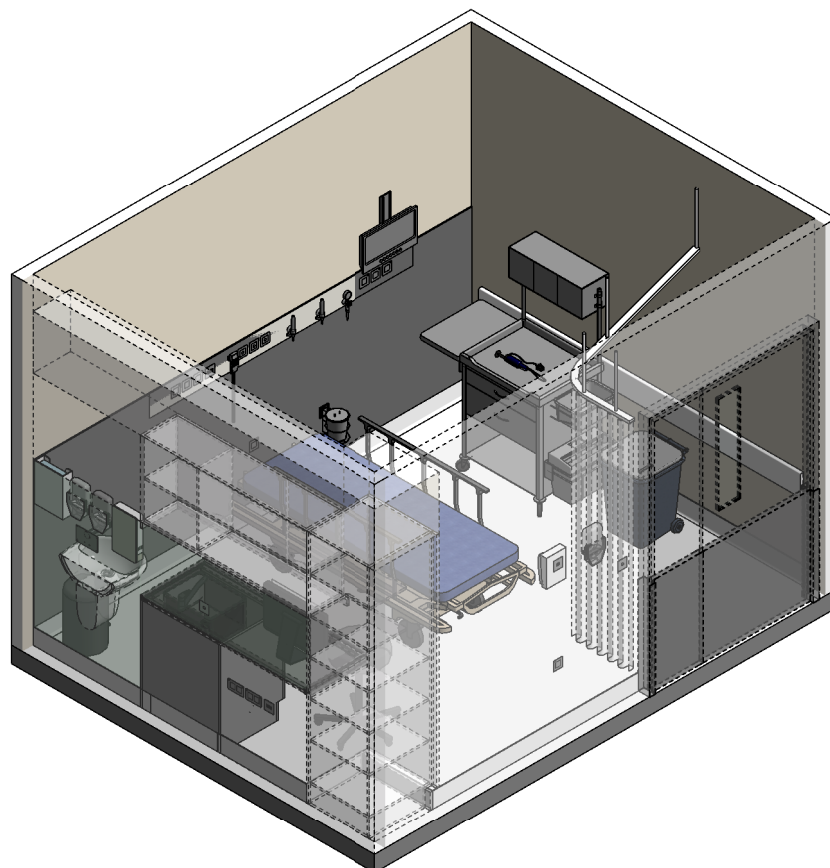
plst-14-i

Room Name

Plaster Room, 14m<sup>2</sup>



**ISOMETRIC VIEW 01**



**ISOMETRIC VIEW 02**

REV	DESCRIPTION	DATE	BY	REV	DESCRIPTION	DATE	BY	COMPATIBILITY
1	FIRST ISSUE	26.06.15	NB					
2	GENERAL REVISION	31.08.22	RA					



International Health Facility Guidelines at:  
[www.healthdesign.com.au/iHFG](http://www.healthdesign.com.au/iHFG)  
 Editable version of Standard Components on  
 Health Facility Briefing System (HFBS) at:  
[www.healthdesign.com.au](http://www.healthdesign.com.au) ©TAHPI



DESIGNED	APPROVED	DATE	SCALE(S)	SHEET
RA	RH	31.08.22		3 OF 3
REVIT FILE NAME		PAPER DRAWING ID		ISSUE
plst-14-i		plst-14-i-3		2

This document is for advisory purpose only