

# iHFG Standard Components

Room Layout Sheet

Room Name **Prayer Room**

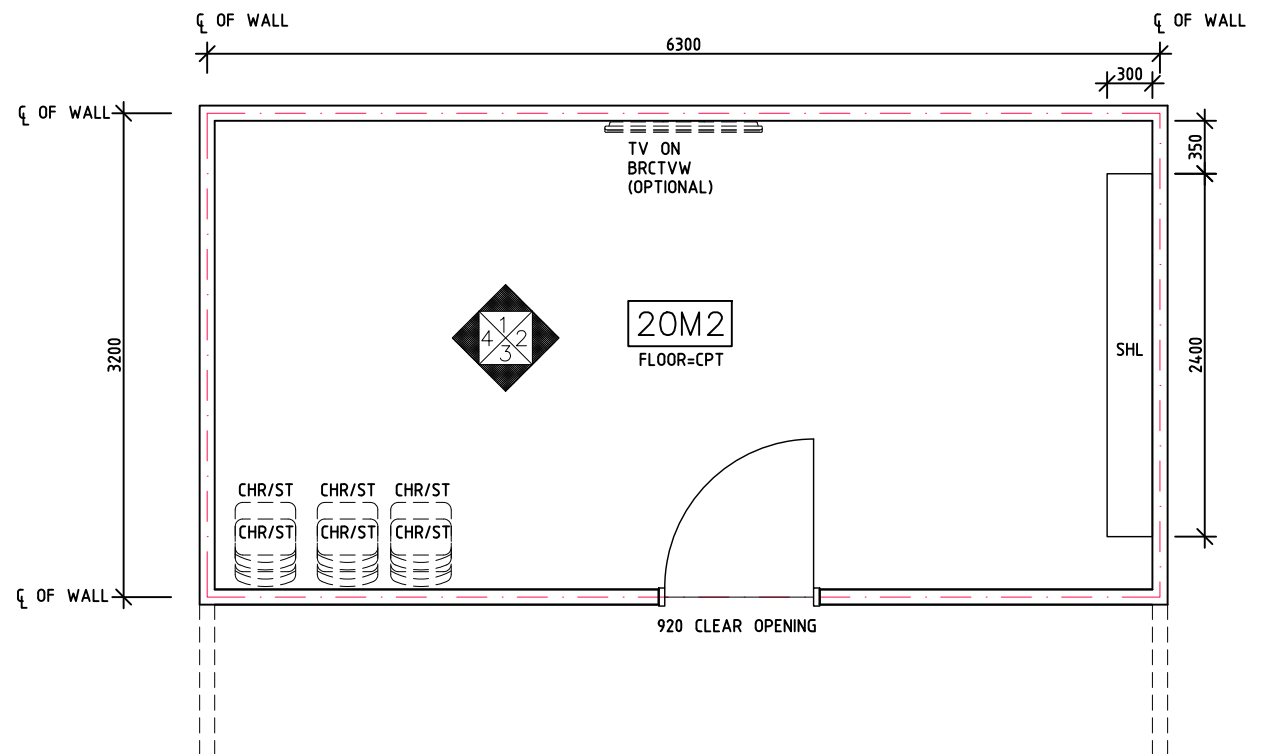
RLS Room Code

prar-20-i

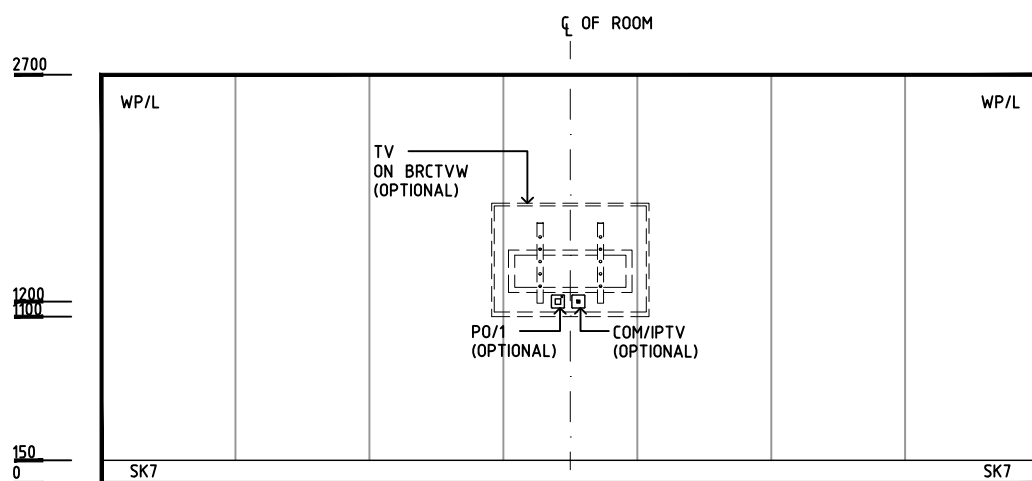
RDS Room Code

prar-20-i

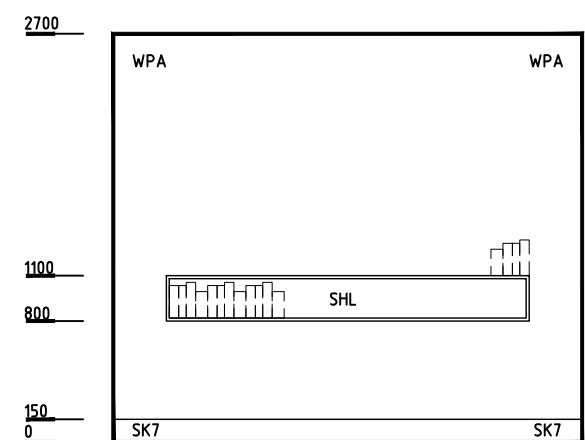
BRCTVW	BRACKET - TELEVISION, WALL MOUNTED
C	CLOCK
CHR/ST	CHAIR - STACKABLE
COM/2	COMMUNICATION OUTLET - DOUBLE
CPT	CARPET
COM/IPTV	COMMUNICATION OUTLET - INTERNET PROTOCOL TELEVISION
KP	KICKPLATE
LS/R	LIGHT SWITCH - ROOM
PO/1	POWER OUTLET - SINGLE
PO/2	POWER OUTLET - DOUBLE
PO/C	POWER OUTLET - CLEANER'S
POE	POWER OVER ETHERNET
SHL	SHELF - LAMINATED
SK7	TIMBER SKIRTING
WPA	WALL PAPER
WP/L	WALL PANEL, LAMINATE



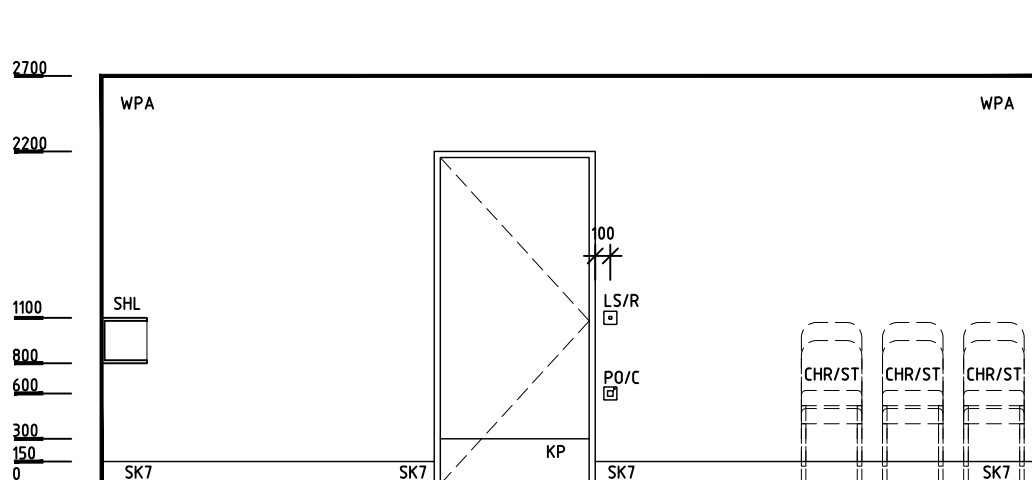
**PLAN**



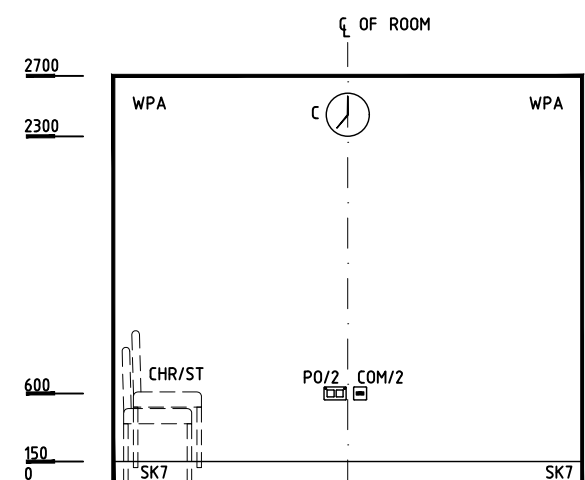
**ELEVATION 1**



**ELEVATION 2**



**ELEVATION 3**



**ELEVATION 4**

REV	DESCRIPTION	DATE	BY	REV	DESCRIPTION	DATE	BY	COMPATIBILITY
1	FIRST ISSUE	24.10.10	CC	4	GENERAL REVISION	27.01.23	AM	
2	GENERAL REVISION	30.08.11	SK					
3	GENERAL REVISION	31.10.12	CT					



International Health Facility Guidelines at:  
[www.healthdesign.com.au/iHFG](http://www.healthdesign.com.au/iHFG)  
 Editable version of Standard Components on  
 Health Facility Briefing System (HFBS) at:  
[www.healthdesign.com.au/TAHPI](http://www.healthdesign.com.au/TAHPI)



DESIGNED	APPROVED	DATE	SCALE(S)	SHEET
AM	SA	27.01.23	1:50 in A3	1 OF 2
CAD FILE NAME		PAPER DRAWING ID		ISSUE
prar-20-i		prar-20-i-1		4

# iHFG Standard Components

Room Layout Sheet

Room Name **Prayer Room**

RLS Room Code

prar-20-i

RDS Room Code

prar-20-i

**GENERAL NOTES:**

THIS DRAWING TO BE READ IN CONJUNCTION WITH R.D.S. (ROOM DATA SHEETS) WHICH TAKES PRECEDENCE.

ALL SERVICES INDICATED ARE INDICATIVE AND SUBJECTED TO DETAILED PROJECT SPECIFIC ENGINEERING DESIGN.

**CEILING LEGEND:**

ACT ACOUSTIC CEILING TILES  
PC4 SHADOW ANGLE, POWDERCOAT ALUMINIUM CORNICE

 TILE CEILING GRID (600 x 600)

 CEILING TYPE  
 HEIGHT ABOVE F.F.L.

**ELECTRICAL LEGEND:**



 LIGHT - LED LIGHT

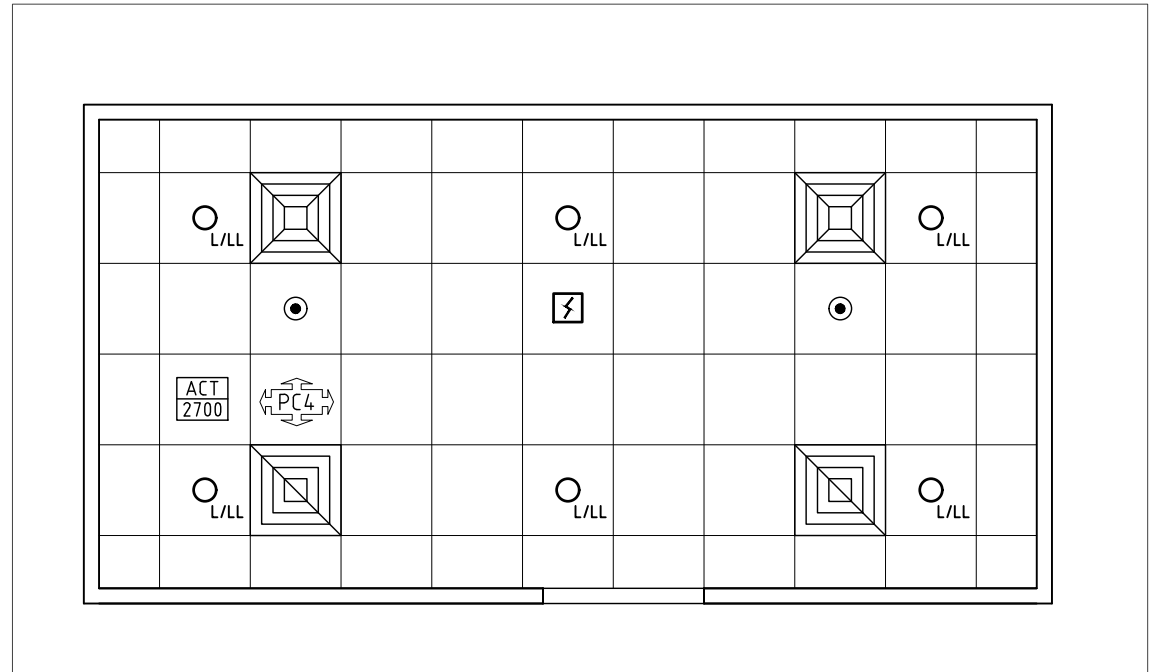
**MECHANICAL LEGEND:**

 SUPPLY AIR GRILLE


 RETURN AIR GRILLE

**FIRE SERVICES LEGEND:**

 SMOKE DETECTOR  
 SPRINKLER



**REFLECTED CEILING PLAN**

REV	DESCRIPTION	DATE	BY	REV	DESCRIPTION	DATE	BY	COMPATIBILITY																				
1	FIRST ISSUE	24.10.10	CC	4	GENERAL REVISION	27.01.23	AM																					
2	GENERAL REVISION	30.08.11	SK																									
3	GENERAL REVISION	31.10.12	CT																									
		International Health Facility Guidelines at: www.healthdesign.com.au/iHFG Editable version of Standard Components on Health Facility Briefing System (HFBS) at: www.healthdesign.com.au ©TAHPI						<table border="1"> <tr> <th>DESIGNED</th> <th>APPROVED</th> <th>DATE</th> <th>SCALE(S)</th> <th>SHEET</th> </tr> <tr> <td>AM</td> <td>SA</td> <td>27.01.23</td> <td>1:50 in A3</td> <td>2 OF 2</td> </tr> <tr> <td colspan="2">CAD FILE NAME</td> <td colspan="2">PAPER DRAWING ID</td> <td>ISSUE</td> </tr> <tr> <td colspan="2">prar-20-i</td> <td colspan="2">prar-20-i-2</td> <td>4</td> </tr> </table>	DESIGNED	APPROVED	DATE	SCALE(S)	SHEET	AM	SA	27.01.23	1:50 in A3	2 OF 2	CAD FILE NAME		PAPER DRAWING ID		ISSUE	prar-20-i		prar-20-i-2		4
DESIGNED	APPROVED	DATE	SCALE(S)	SHEET																								
AM	SA	27.01.23	1:50 in A3	2 OF 2																								
CAD FILE NAME		PAPER DRAWING ID		ISSUE																								
prar-20-i		prar-20-i-2		4																								