

# iHFG Standard Components

## Room Layout Sheet

RLS Room Code

rad-bunk-i

Room Name

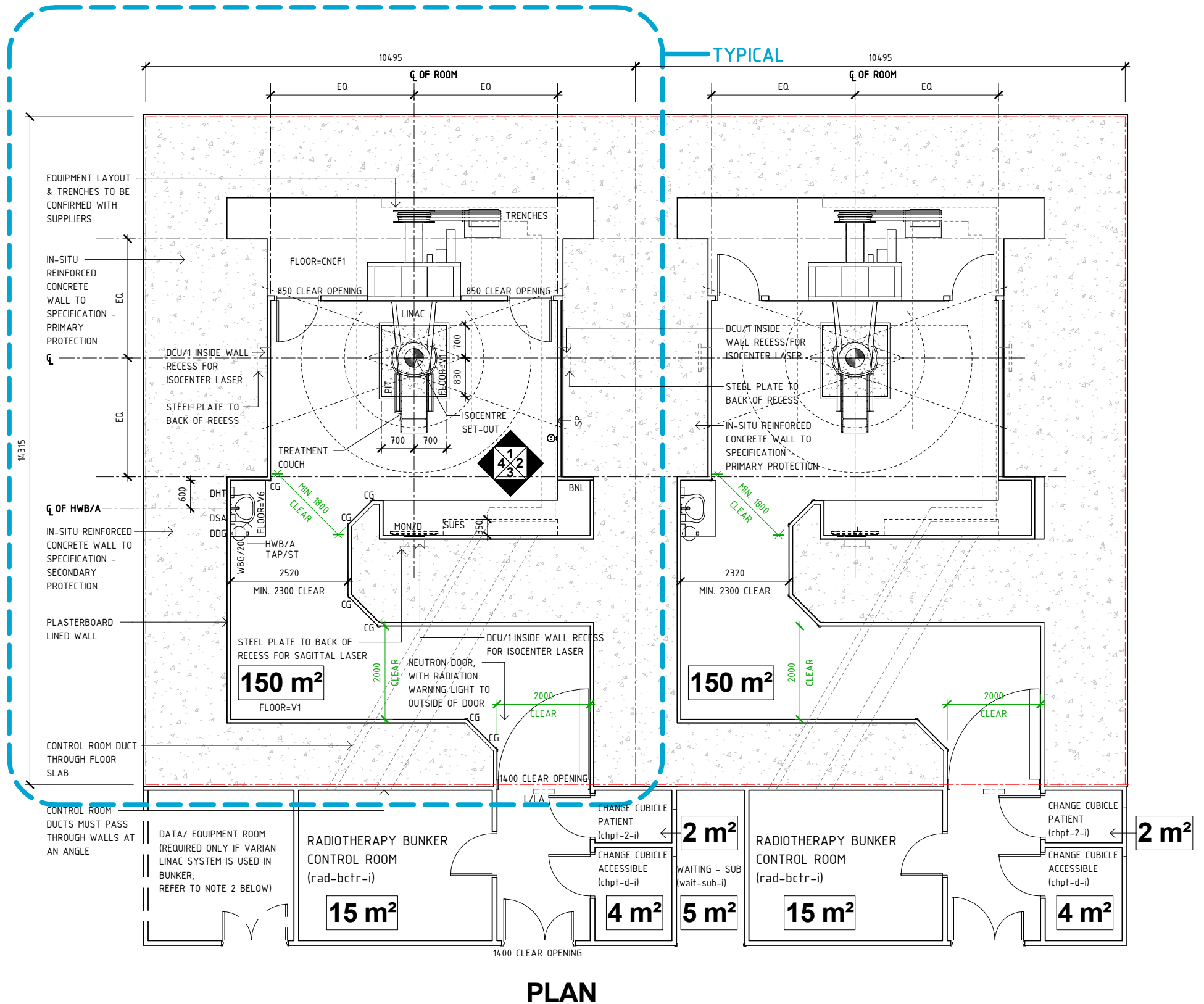
Radiotherapy Bunker

RDS Room Code

rad-bunk-i

BNL	BENCH - LAMINATE
CG	CORNER GUARD
CNCF1	CONCRETE FLOORING - TROWEL, SEALED
DCU/1	DIRECT CONNECTION - UNINTERRUPTED POWER SUPPLY, SINGLE
DDG	DISPENSER - DISPOSABLE GLOVES
DHT	DISPENSER - PAPER HAND TOWEL
DSA	DISPENSER - SOAP, ANTISEPTIC
HWB/A	HAND WASH BASIN - TYPE 'A'
L/LA	LIGHT - 'LASER IN USE'
LINAC	LINEAR ACCELERATOR
MON/D	MONITOR - DISPLAY
SP	SERVICES PANEL
SUFS	SHELVING UNIT - FIXED SHELVES

TAP/ST	TAPWARE - SENSOR TAP
V1	VINYL FLOORING, STANDARD SLIP RESISTANT
V6	VINYL FLOORING, NON SLIP - TEXTURED
WBG/20	WASTE BIN - GENERAL, 20 LITRE



**NOTE:**

1. THE THICKNESS OF CONCRETE STRUCTURE TO BE AS PER PHYSICIST CONSULTANT'S RADIATION SHIELDING REPORT
2. LAYOUT & EQUIPMENT FOR ELEKTA MODEL (VERSA HD) OF MEDICAL LINEAR ACCELERATOR (LINAC) IS SHOWN AS EXAMPLE. FOR VARIAN MODEL, PLEASE REFER TO MANUFACTURER'S SPECIFICATION FOR EQUIPMENT SET-OUT & OTHER REQUIREMENTS.

REV	DESCRIPTION	DATE	BY	REV	DESCRIPTION	DATE	BY	COMPATIBILITY
1	FIRST ISSUE	09.08.13	CT					
2	GENERAL REVISION	09.11.22	AK					

# iHFG Standard Components

## Room Layout Sheet

Room Name | **Radiotherapy Bunker**

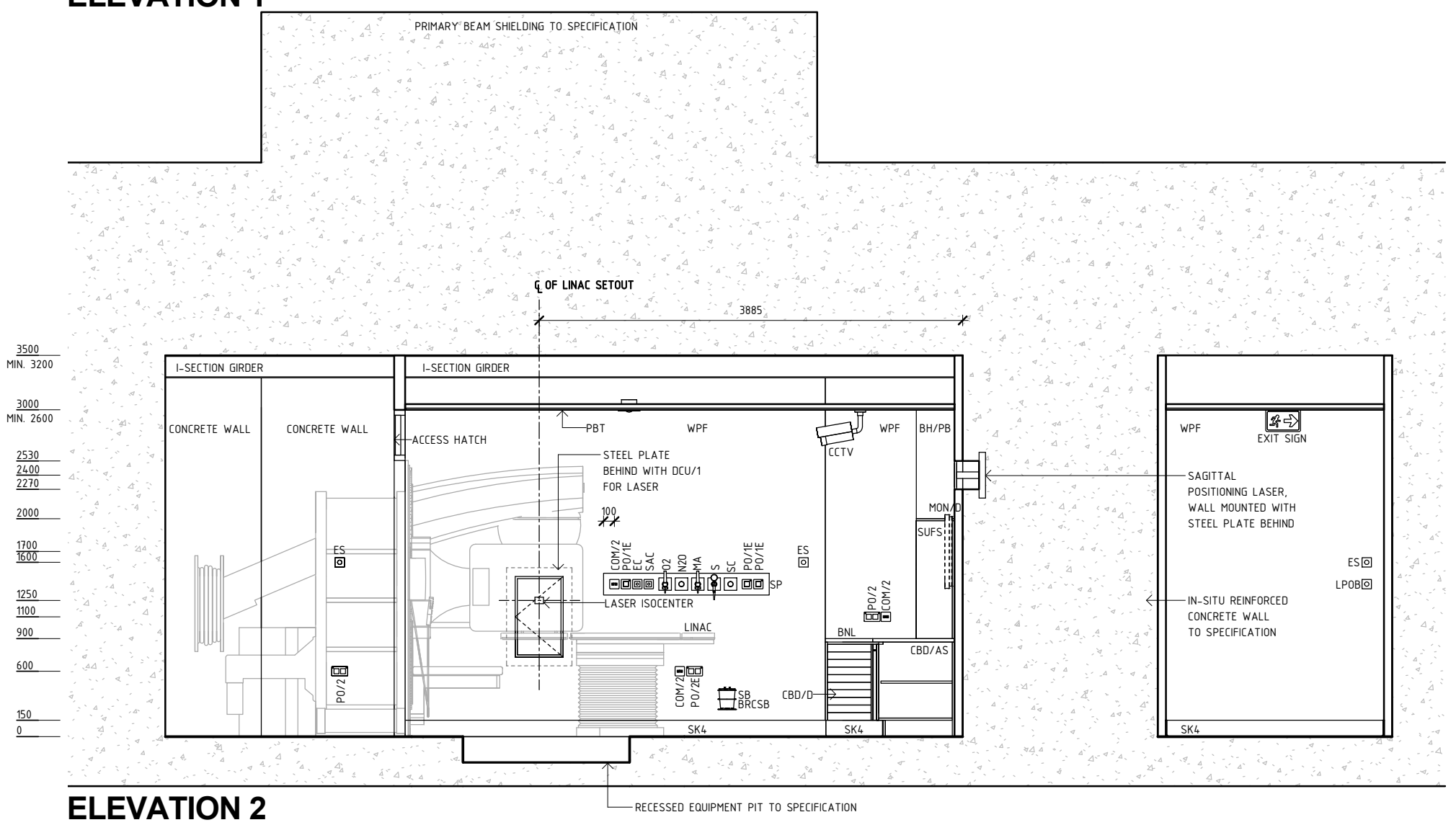
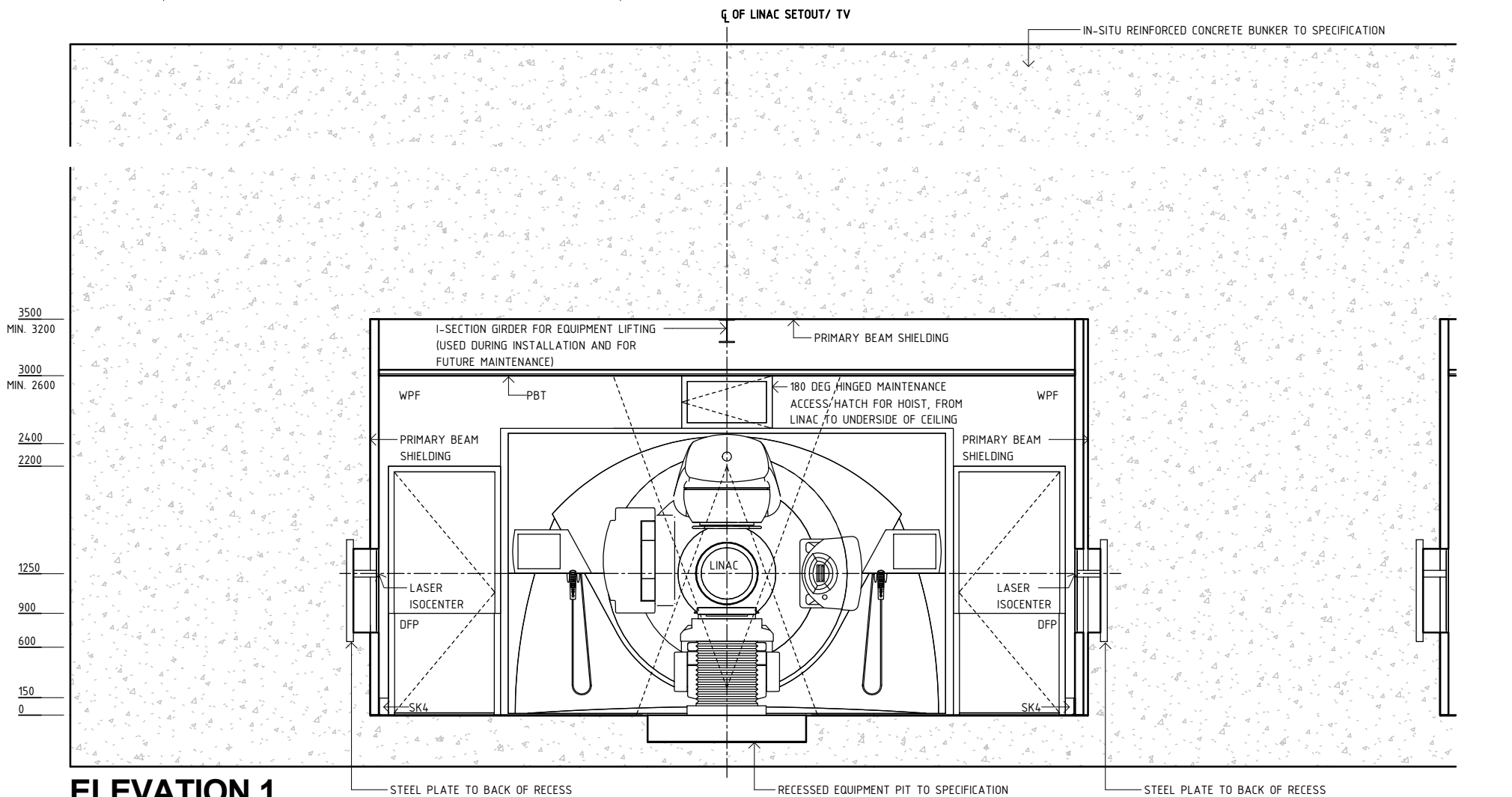
RLS Room Code

rad-bunk-i

RDS Room Code

rad-bunk-i

BH/PB	BULKHEAD - PLASTERBOARD, PAINT FINISH	ES	EMERGENCY STOP BUTTON	PO/2E	POWER OUTLET - EMERGENCY, DOUBLE
BNL	BENCH - LAMINATE	LINAC	LINEAR ACCELERATOR	S	SUCTION
BRCSB	BRACKET - SUCTION BOTTLE	LPOB	LAST PERSON OUT BUTTON	SAC	STAFF ASSIST CALL
CBD/AS	CUPBOARD - ADJUSTABLE SHELVES	MA	MEDICAL AIR	SB	SUCTION BOTTLE
CBD/D	CUPBOARD - DRAWER UNIT	MON/D	MONITOR - DISPLAY	SC	SCAVENGE OUTLET
CCTV	CAMERA, CLOSED CIRCUIT TELEVISION	N2O	NITROUS OXIDE	SK4	FLOOR VINYL COVED SKIRTING
COM/2	COMMUNICATION OUTLET - DOUBLE	O2	OXYGEN	SP	SERVICES PANEL
DCU/1	DIRECT CONNECTION - UNINTERRUPTED POWER SUPPLY, SINGLE	PBT	PLASTERBOARD DROP-IN CEILING TILES (PREFINISHED)	SUFS	SHELVING UNIT - FIXED SHELVES
DFP	DOOR AND DOOR FRAME PROTECTION	PO/1E	POWER OUTLET - EMERGENCY, SINGLE	WPF	WALL PAINT FINISH
EC	EMERGENCY CALL	PO/2	POWER OUTLET - DOUBLE		



REV	DESCRIPTION	DATE	BY	REV	DESCRIPTION	DATE	BY	COMPATIBILITY
1	FIRST ISSUE	09.08.13	CT					
2	GENERAL REVISION	09.11.22	AK					

<b>International Health Facility Guidelines</b>	International Health Facility Guidelines at: <a href="http://www.healthdesign.com.au/iHFG">www.healthdesign.com.au/iHFG</a> Editable version of Standard Components on Health Facility Briefing System (HFBS) at: <a href="http://www.healthdesign.com.au/TAHPI">www.healthdesign.com.au/TAHPI</a>			DESIGNED	APPROVED	DATE	SCALE(S)	SHEET
	AK	RH		09.11.22	1 : 50	2 OF 5		
REVIT FILE NAME		PAPER DRAWING ID		ISSUE				
rad-bunk-i		rad-bunk-i-2		2				

# iHFG Standard Components

## Room Layout Sheet

RLS Room Code

rad-bunk-i

Room Name

Radiotherapy Bunker

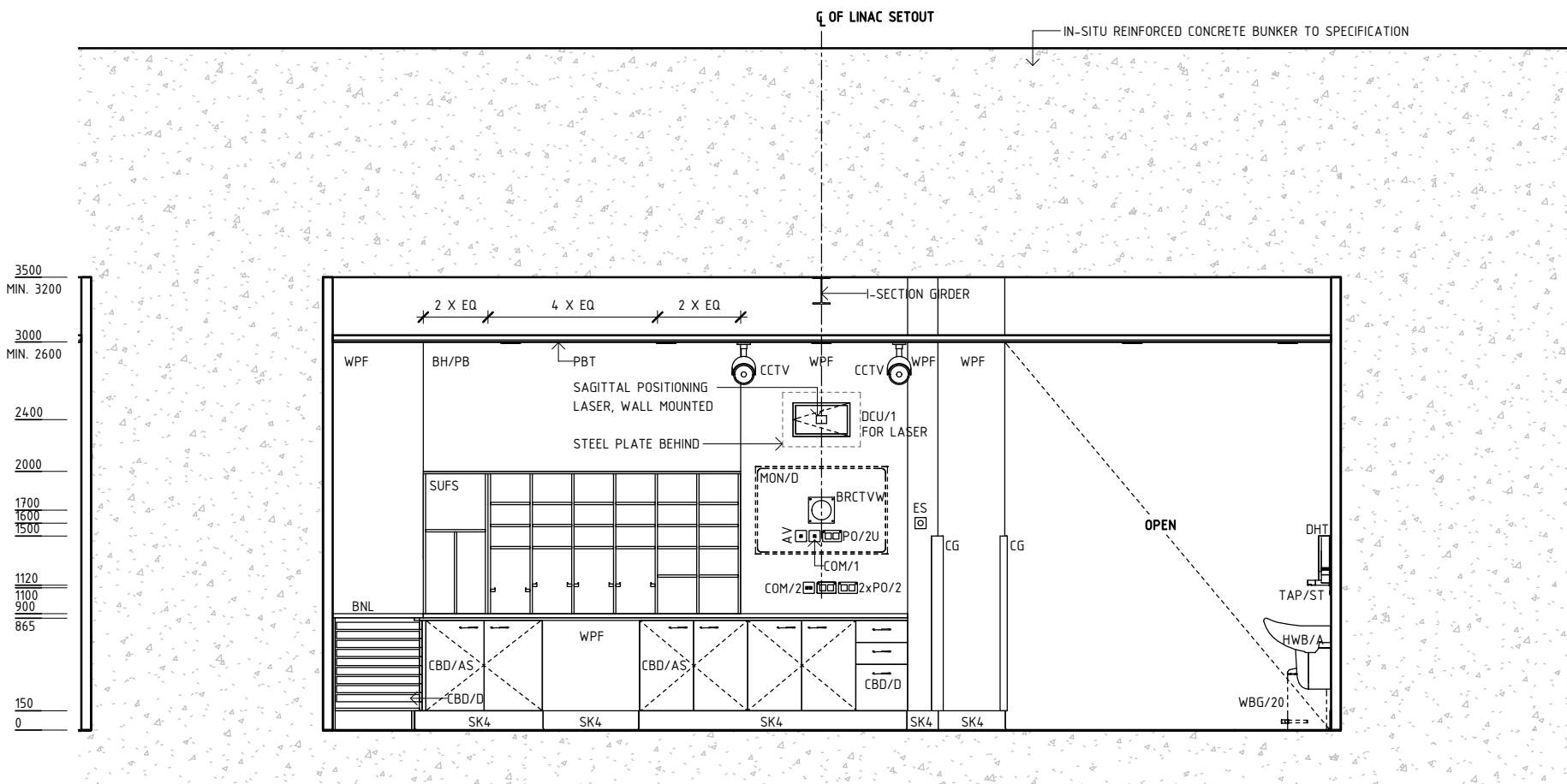
RDS Room Code

rad-bunk-i

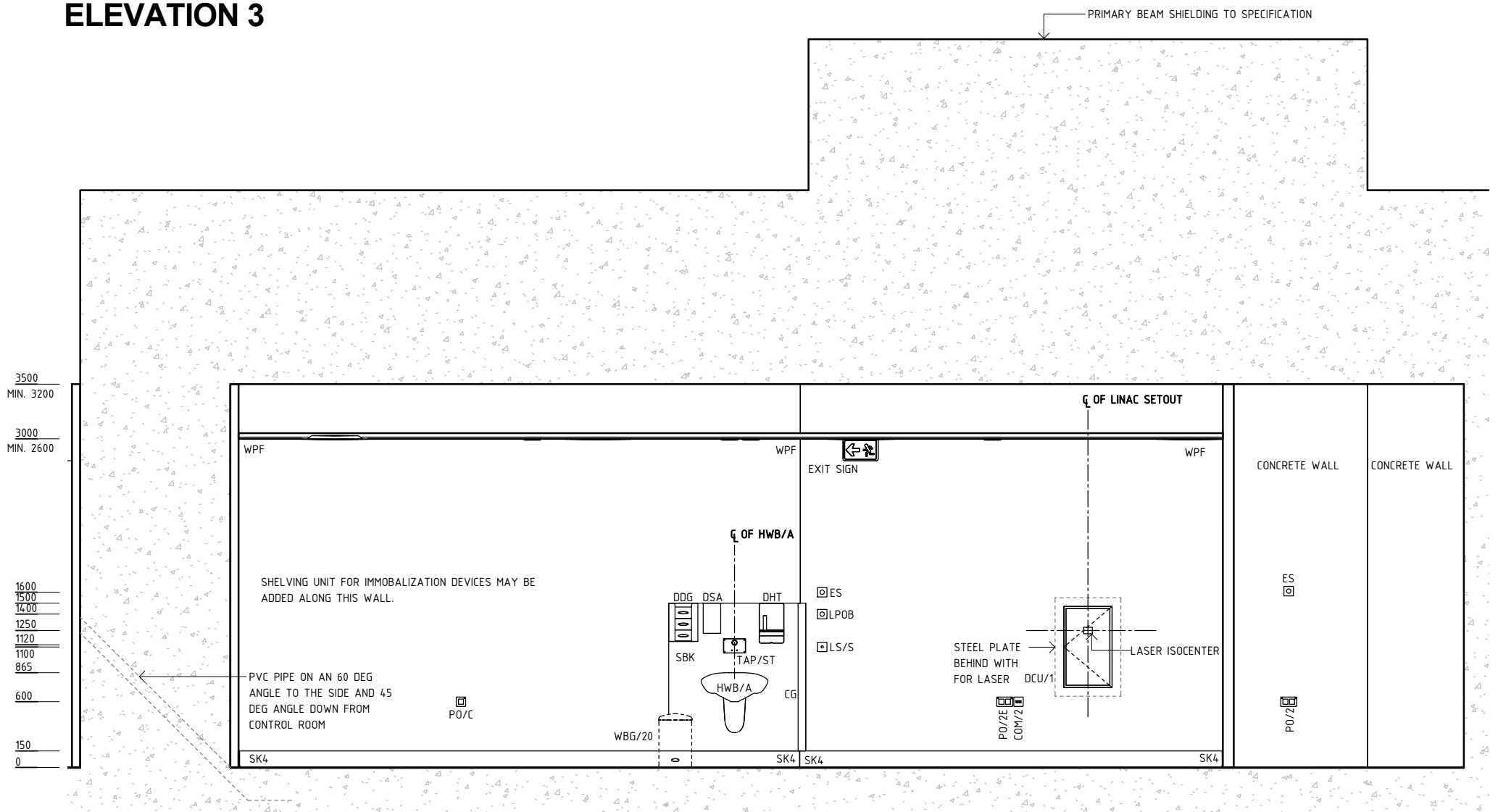
AV	AUDIO VISUAL OUTLET
BH/PB	BULKHEAD - PLASTERBOARD, PAINT FINISH
BNL	BENCH - LAMINATE
BRCTVW	BRACKET - TELEVISION, WALL MOUNTED
CBD/AS	CUPBOARD - ADJUSTABLE SHELVES
CBD/D	CUPBOARD - DRAWER UNIT
CCTV	CAMERA, CLOSED CIRCUIT TELEVISION
CG	CORNER GUARD
COM/1	COMMUNICATION OUTLET - SINGLE
COM/2	COMMUNICATION OUTLET - DOUBLE
DCU/1	DIRECT CONNECTION - UNINTERRUPTED POWER SUPPLY, SINGLE
DDG	DISPENSER - DISPOSABLE GLOVES
DHT	DISPENSER - PAPER HAND TOWEL
DSA	DISPENSER - SOAP, ANTISEPTIC

ES	EMERGENCY STOP BUTTON
HWB/A	HAND WASH BASIN - TYPE 'A'
LP0B	LAST PERSON OUT BUTTON
LS/S	LIGHT SWITCH - SIGN
MON/D	MONITOR - DISPLAY
PBT	PLASTERBOARD DROP-IN CEILING TILES (PREFINISHED)
PO/2	POWER OUTLET - DOUBLE
PO/2E	POWER OUTLET - EMERGENCY, DOUBLE
PO/2U	UNINTERRUPTED POWER SUPPLY - DOUBLE
PO/C	POWER OUTLET - CLEANER'S
SBK	SPLASHBACK
SK4	FLOOR VINYL COVED SKIRTING
SUFS	SHELVING UNIT - FIXED SHELVES
TAP/ST	TAPWARE - SENSOR TAP

WBG/20	WASTE BIN - GENERAL, 20 LITRE
WPF	WALL PAINT FINISH



**ELEVATION 3**



**ELEVATION 4**

REV	DESCRIPTION	DATE	BY	REV	DESCRIPTION	DATE	BY	COMPATIBILITY
1	FIRST ISSUE	09.08.13	CT					
2	GENERAL REVISION	09.11.22	AK					

# iHFG Standard Components

## Room Layout Sheet

RLS Room Code

rad-bunk-i

RDS Room Code

rad-bunk-i

Room Name

Radiotherapy Bunker

CCTV	CAMERA, CLOSED CIRCUIT TELEVISION
EL	EMERGENCY LIGHTING
L/CC	LIGHT - COLOUR CORRECTED
L/CCD	LIGHT - COLOUR CORRECTED, DIMMABLE
L/LA	LIGHT - 'LASER IN USE'
L/LL	LIGHT - LED LIGHT

**GENERAL NOTES:**

THIS DRAWING TO BE READ IN CONJUNCTION WITH R.D.S. (ROOM DATA SHEETS) WHICH TAKES PRECEDENCE.

ALL SERVICES INDICATED ARE INDICATIVE AND SUBJECT TO DETAILED PROJECT SPECIFIC ENGINEERING DESIGN.

**CEILING LEGEND:**

	CEILING TYPE
	CORNICE TYPE
	HEIGHT ABOVE F.F.L.
	GRID LINE
	TILE CEILING GRID (600 x 600)
	PLASTERBOARD BULKHEAD, PAINT FINISH
	PLASTERBOARD DROP-IN CEILING TILES (PREFINISHED) WITH PLASTERBOARD SQUARE SET CORNICE

**ELECTRICAL LEGEND:**

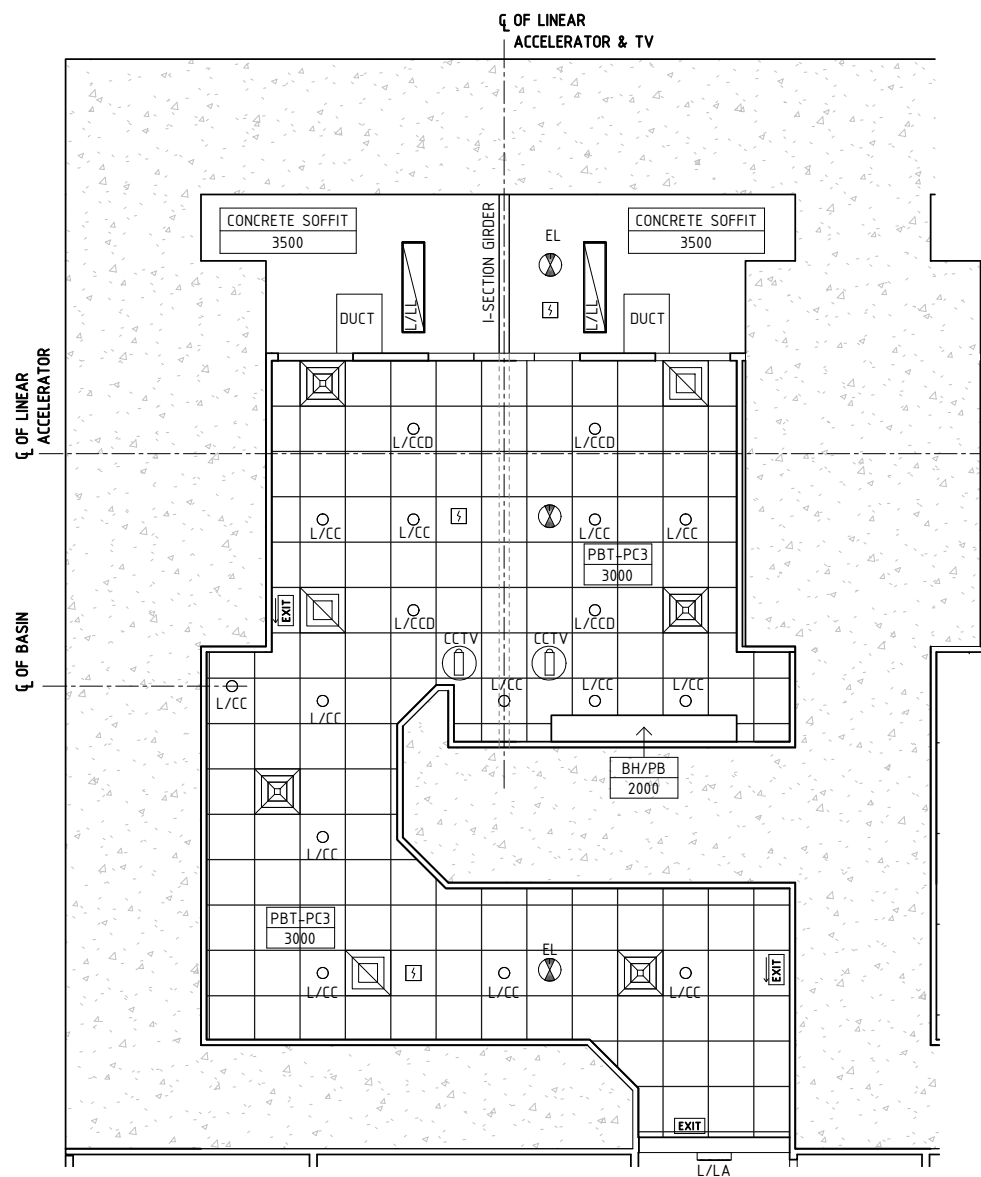
	LIGHTING - COLOUR CORRECTED
	LIGHT - DOWNLIGHT, DIMMABLE
	LIGHT - LED LIGHT

**MECHANICAL LEGEND:**

	SUPPLY AIR GRILLE
	RETURN AIR OR TRANSFER GRILLE

**FIRE SERVICES LEGEND:**

	SMOKE DETECTOR
--	----------------



**REFLECTED CEILING PLAN**

REV	DESCRIPTION	DATE	BY	REV	DESCRIPTION	DATE	BY	COMPATIBILITY
1	FIRST ISSUE	09.08.13	CT					
2	GENERAL REVISION	09.11.22	AK					iHFG

DESIGNED	APPROVED	DATE	SCALE(S)	SHEET
AK	RH	09.11.22	As indicated	4 OF 5
REVIT FILE NAME		PAPER DRAWING ID		ISSUE
rad-bunk-i		rad-bunk-i-4		2



# iHFG Standard Components

Room Layout Sheet

Room Name

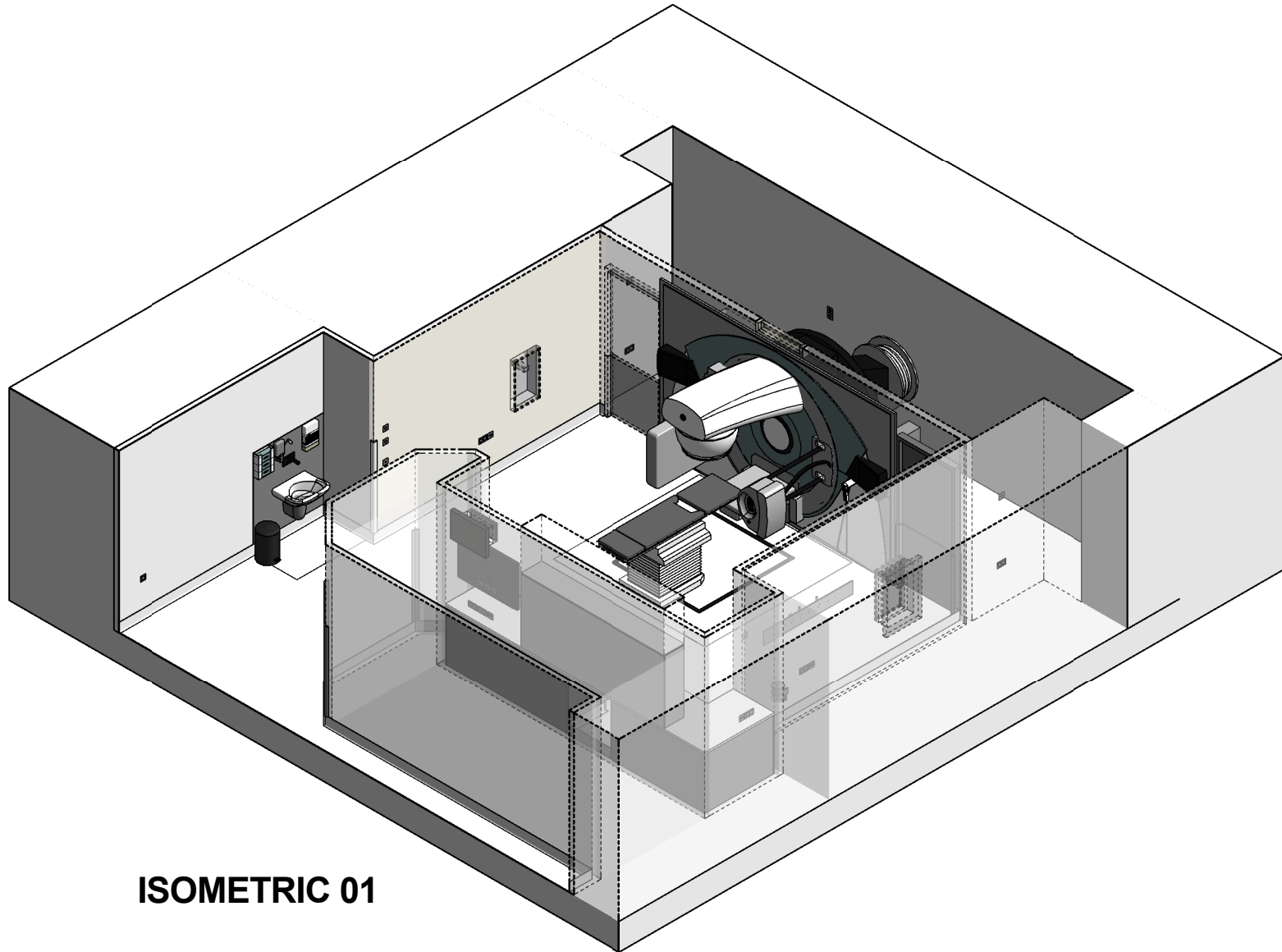
Radiotherapy Bunker

RLS Room Code

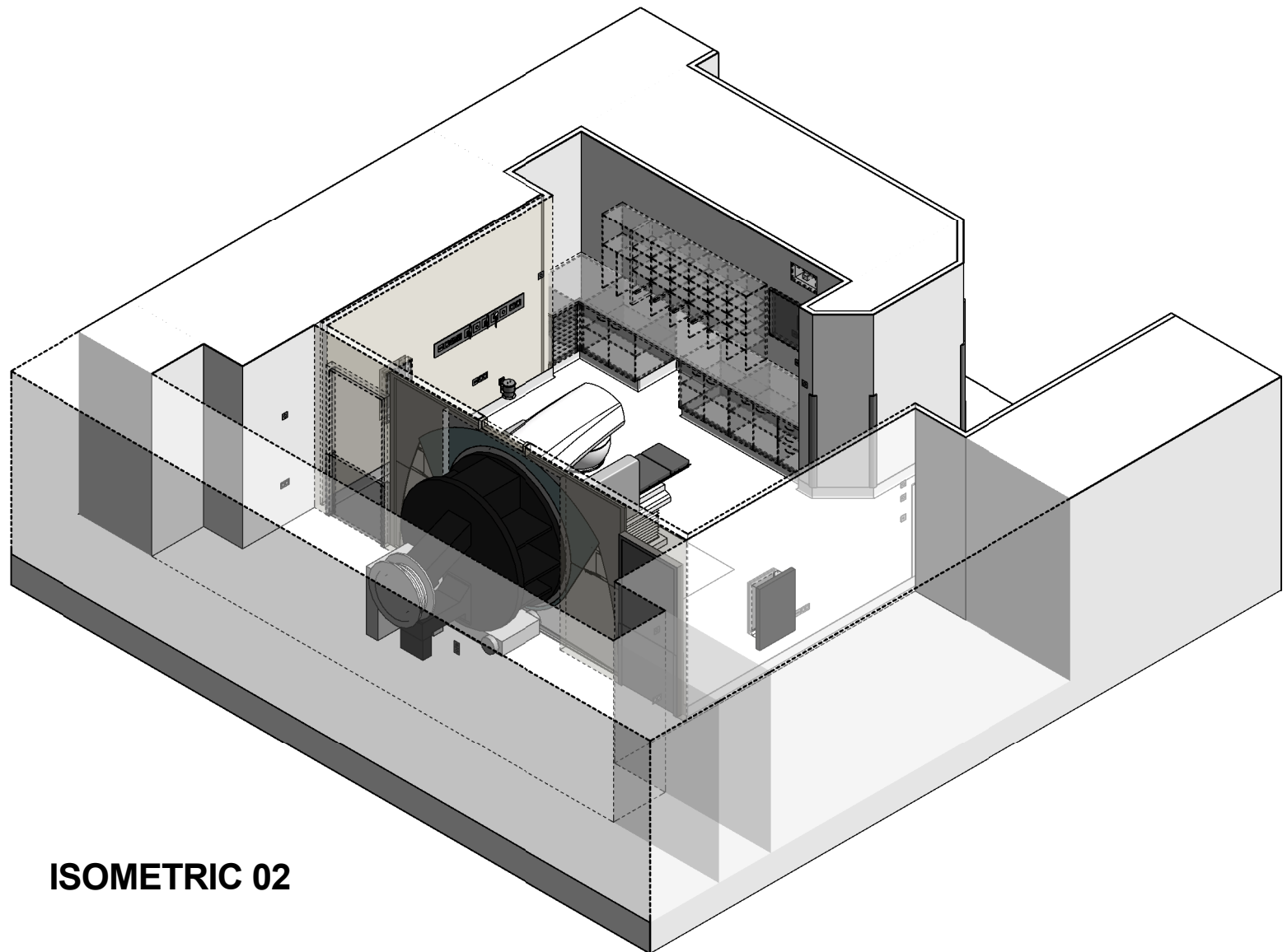
rad-bunk-i

RDS Room Code

rad-bunk-i



ISOMETRIC 01



ISOMETRIC 02

REV	DESCRIPTION	DATE	BY	REV	DESCRIPTION	DATE	BY	COMPATIBILITY
1	FIRST ISSUE	09.08.13	CT					
2	GENERAL REVISION	09.11.22	AK					



International Health Facility Guidelines at:  
[www.healthdesign.com.au/iHFG](http://www.healthdesign.com.au/iHFG)  
 Editable version of Standard Components on  
 Health Facility Briefing System (HFBS) at:  
[www.healthdesign.com.au](http://www.healthdesign.com.au) ©TAHPI



DESIGNED	APPROVED	DATE	SCALE(S)	SHEET
AK	RH	09.11.22		5 OF 5
REVIT FILE NAME		PAPER DRAWING ID		ISSUE
rad-bunk-i		rad-bunk-i-5		2

This document is for advisory purpose only