

# iHFG Standard Components

## Room Layout Sheet

RLS Room Code

rec-e-i

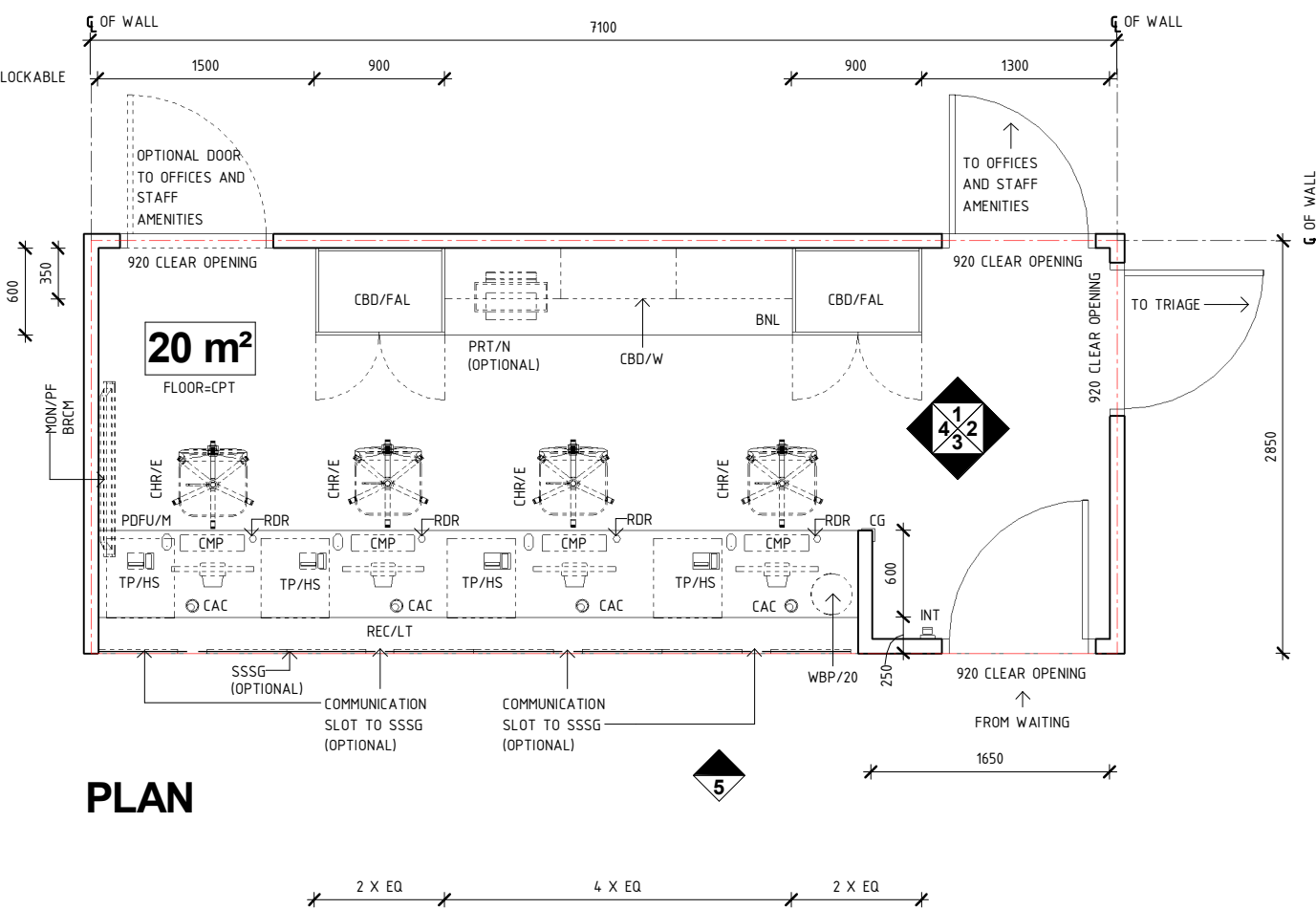
RDS Room Code

rec-e-i

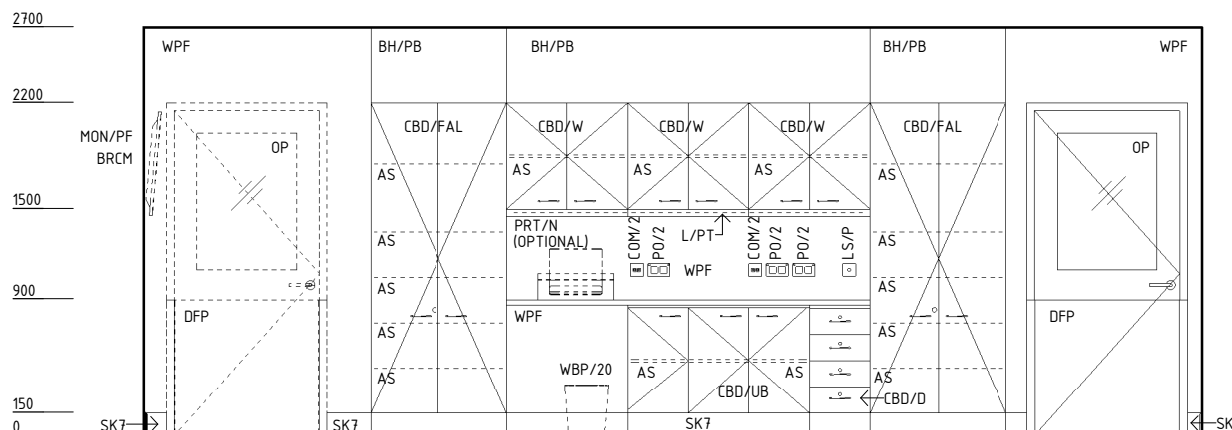
Room Name

Reception (Emergency), 20m<sup>2</sup>

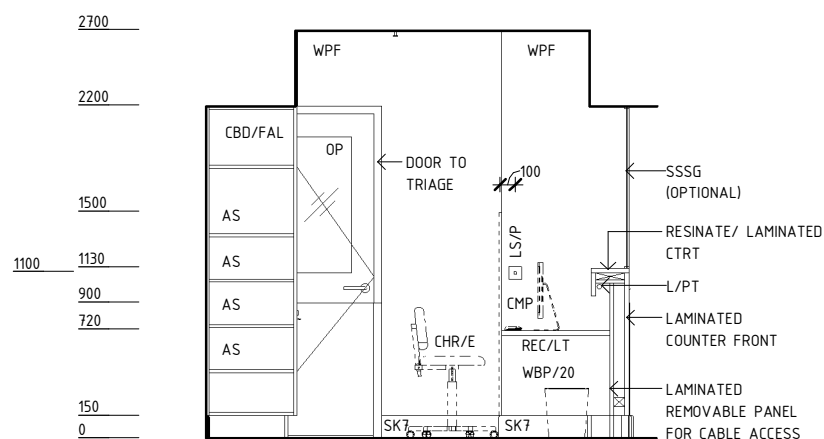
- AS ADJUSTABLE SHELF
- BH/PB BULKHEAD - PLASTERBOARD, PAINT FINISH
- BNL BENCH - LAMINATE
- BRCM BRACKET - MONITOR
- CAC CABLE ACCESS CAP
- CBD/D CUPBOARD - DRAWER UNIT
- CBD/FAL CUPBOARD - FULL HEIGHT, ADJUSTABLE SHELVES, LOCKABLE
- CBD/UB CUPBOARD - UNDER BENCH
- CBD/W CUPBOARD - WALL MOUNTED
- CG CORNER GUARD
- CHR/E CHAIR - ERGONOMIC, OFFICE
- CMP COMPUTER
- COM/2 COMMUNICATION OUTLET - DOUBLE
- CPT CARPET
- CTRT COUNTER TOP
- DFP DOOR AND DOOR FRAME PROTECTION
- INT INTERCOM
- L/PT LIGHT - PELMET TASK LIGHT
- LS/P LIGHT SWITCH - PELMET TASK LIGHT
- MON/PF MONITOR - PATIENT FLOW
- OP OBSERVATION PANEL
- PDFU/M PEDESTAL DRAWER / FILING UNIT - MOBILE
- PO/2 POWER OUTLET - DOUBLE
- PRT/N PRINTER - NETWORKED
- RDR REMOTE DOOR RELEASE BUTTON
- REC/LT RECEPTION DESK - LAMINATE/ TIMBER
- SK7 TIMBER SKIRTING
- SSSG SECURITY SCREEN - SAFETY GLASS
- TP/HS TELEPHONE - HANDSET, STANDARD
- WBP/20 WASTE BIN - PAPER, 20 LITRE
- WPF WALL PAINT FINISH



PLAN



ELEVATION 1



ELEVATION 2

REV	DESCRIPTION	DATE	BY	REV	DESCRIPTION	DATE	BY	COMPATIBILITY				
1	FIRST ISSUE	24.10.10	LL	4	GENERAL REVISION	27.01.23	AM					
2	GENERAL REVISION	30.08.11	SK									
3	GENERAL REVISION	31.10.12	KC									
								DESIGNED	APPROVED	DATE	SCALE(S)	SHEET
								AM	SA	27.01.23	1 : 50	1 OF 3
								REVIT FILE NAME		PAPER DRAWING ID		ISSUE
								rec-e-i		rec-e-i-1		4

# iHFG Standard Components

## Room Layout Sheet

RLS Room Code

rec-e-i

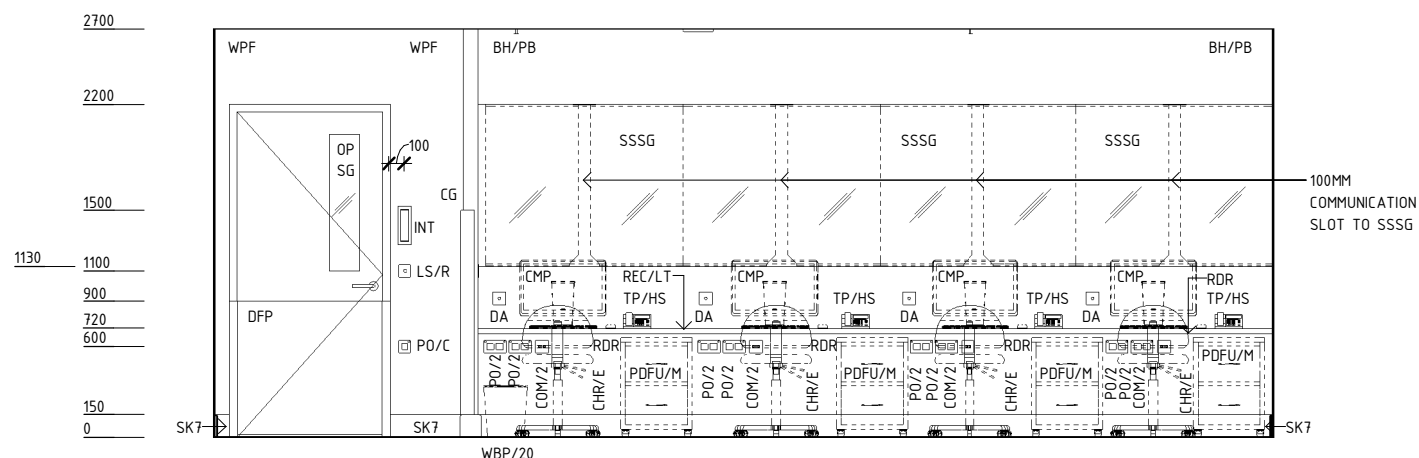
RDS Room Code

rec-e-i

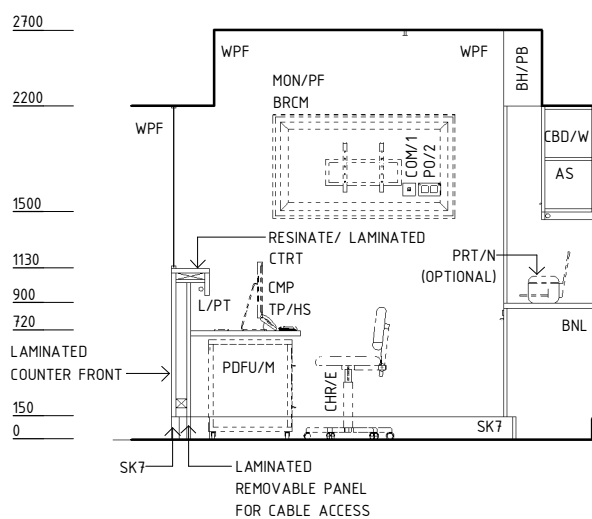
Room Name

Reception (Emergency), 20m2

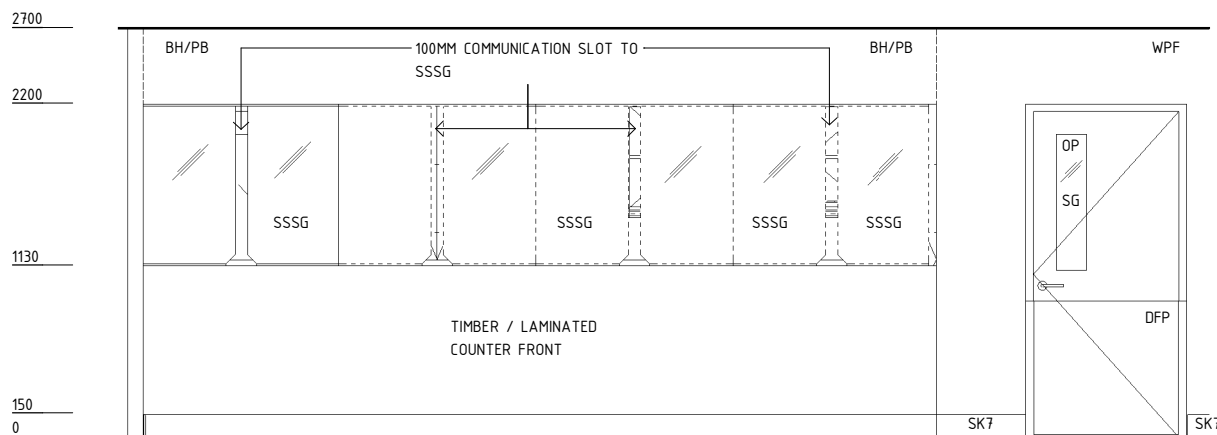
AS	ADJUSTABLE SHELF
BH/PB	BULKHEAD - PLASTERBOARD, PAINT FINISH
BNL	BENCH - LAMINATE
BRCM	BRACKET - MONITOR
CBD/W	CUPBOARD - WALL MOUNTED
CG	CORNER GUARD
CHR/E	CHAIR - ERGONOMIC, OFFICE
CMP	COMPUTER
COM/1	COMMUNICATION OUTLET - SINGLE
COM/2	COMMUNICATION OUTLET - DOUBLE
CTRT	COUNTER TOP
DA	DURESS ALARM
DFP	DOOR AND DOOR FRAME PROTECTION
INT	INTERCOM
L/PT	LIGHT - PELMET TASK LIGHT
LS/R	LIGHT SWITCH - ROOM
MON/PF	MONITOR - PATIENT FLOW
OP	OBSERVATION PANEL
PDFU/M	PEDESTAL DRAWER / FILING UNIT - MOBILE
PO/2	POWER OUTLET - DOUBLE
PO/C	POWER OUTLET - CLEANER'S
PRT/N	PRINTER - NETWORKED
RDR	REMOTE DOOR RELEASE BUTTON
REC/LT	RECEPTION DESK - LAMINATE/ TIMBER
SG	SAFETY GLASS
SK7	TIMBER SKIRTING
SSSG	SECURITY SCREEN - SAFETY GLASS
TP/HS	TELEPHONE - HANDSET, STANDARD
WBP/20	WASTE BIN - PAPER, 20 LITRE
WPF	WALL PAINT FINISH



**ELEVATION 3**



**ELEVATION 4**



**ELEVATION 5**

REV	DESCRIPTION	DATE	BY	REV	DESCRIPTION	DATE	BY	COMPATIBILITY
1	FIRST ISSUE	24.10.10	LL	4	GENERAL REVISION	27.01.23	AM	
2	GENERAL REVISION	30.08.11	SK					
3	GENERAL REVISION	31.10.12	KC					

<b>International Health Facility Guidelines</b>	International Health Facility Guidelines at: <a href="http://www.healthdesign.com.au/iHFG">www.healthdesign.com.au/iHFG</a> Editable version of Standard Components on Health Facility Briefing System (HFBS) at: <a href="http://www.healthdesign.com.au">www.healthdesign.com.au</a> ©TAHPI		DESIGNED	APPROVED	DATE	SCALE(S)	SHEET
			AM	SA	27.01.23	1 : 50	2 OF 3
			REVIT FILE NAME	PAPER DRAWING ID	ISSUE		
			rec-e-i	rec-e-i-2	4		

# iHFG Standard Components

## Room Layout Sheet

RLS Room Code

rec-e-i

RDS Room Code

rec-e-i

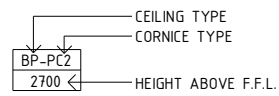
Room Name | Reception (Emergency), 20m2

### GENERAL NOTES:

THIS DRAWING TO BE READ IN CONJUNCTION WITH R.D.S. (ROOM DATA SHEETS) WHICH TAKES PRECEDENCE.

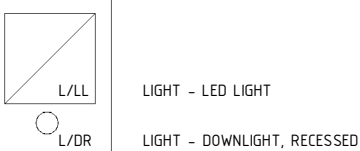
ALL SERVICES INDICATED ARE INDICATIVE AND SUBJECT TO DETAILED PROJECT SPECIFIC ENGINEERING DESIGN.

### CEILING LEGEND:

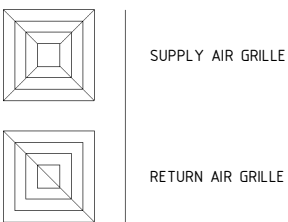


ACT-PC5 ACOUSTIC CEILING TILES WITH POWDERCOAT ALUMINIUM CORNICE, FLUSHED AGAINST WALL  
 BH/PB PLASTERBOARD BULKHEAD, PAINT FINISH  
 TILE CEILING GRID (600 x 600)  
 GRID LINE

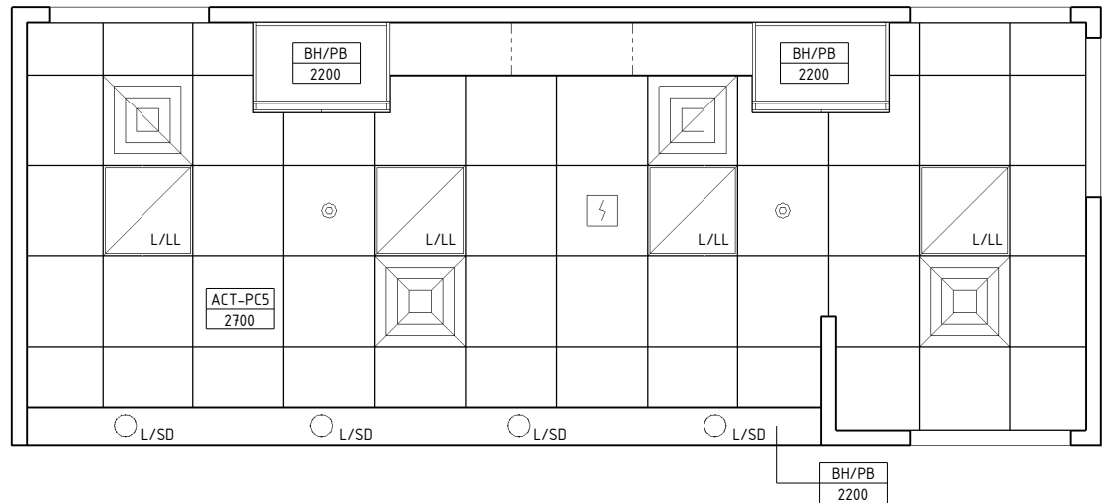
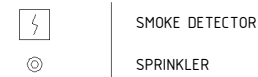
### ELECTRICAL LEGEND:



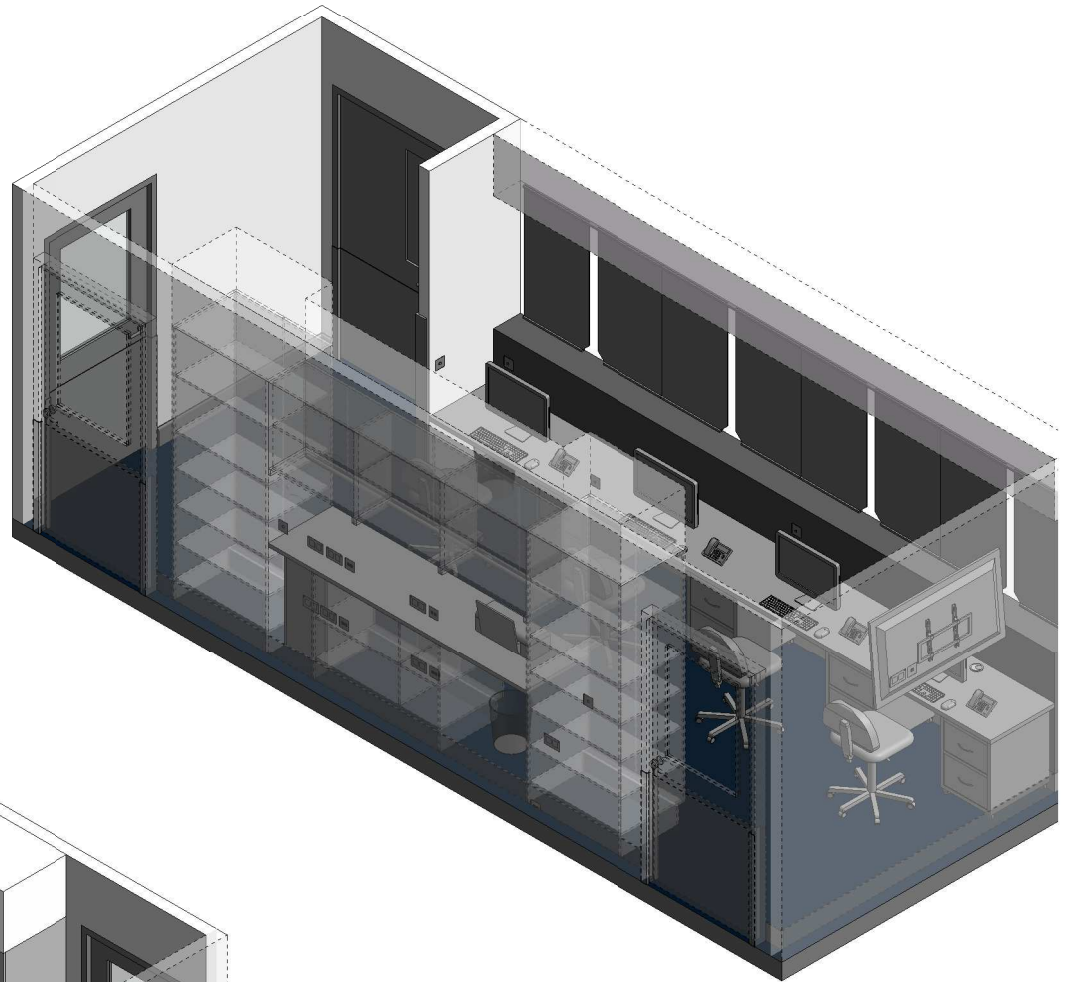
### MECHANICAL LEGEND:



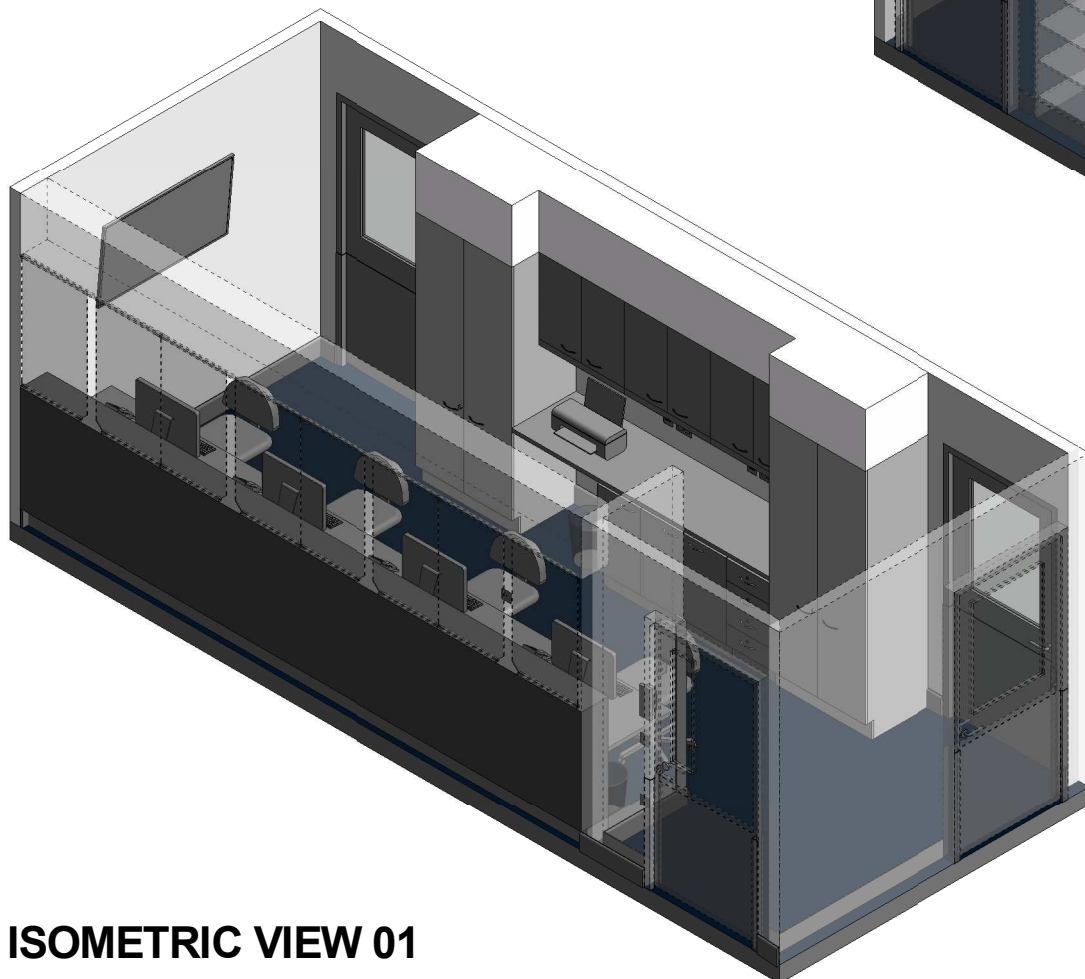
### FIRE SERVICES LEGEND:



REFLECTED CEILING PLAN



ISOMETRIC VIEW 02



ISOMETRIC VIEW 01

REV	DESCRIPTION	DATE	BY	REV	DESCRIPTION	DATE	BY	COMPATIBILITY				
1	FIRST ISSUE	24.10.10	LL	4	GENERAL REVISION	27.01.23	AM	iHFG				
2	GENERAL REVISION	30.08.11	SK									
3	GENERAL REVISION	31.10.12	KC									
								DESIGNED	APPROVED	DATE	SCALE(S)	SHEET
								AM	SA	27.01.23	1 : 50	3 OF 3
								REVIT FILE NAME		PAPER DRAWING ID		ISSUE
								rec-e-i		rec-e-i-3		4