

iHFG Standard Components

Room Layout Sheet

Room Name **Scrub Up/ Gowning, 6m2**

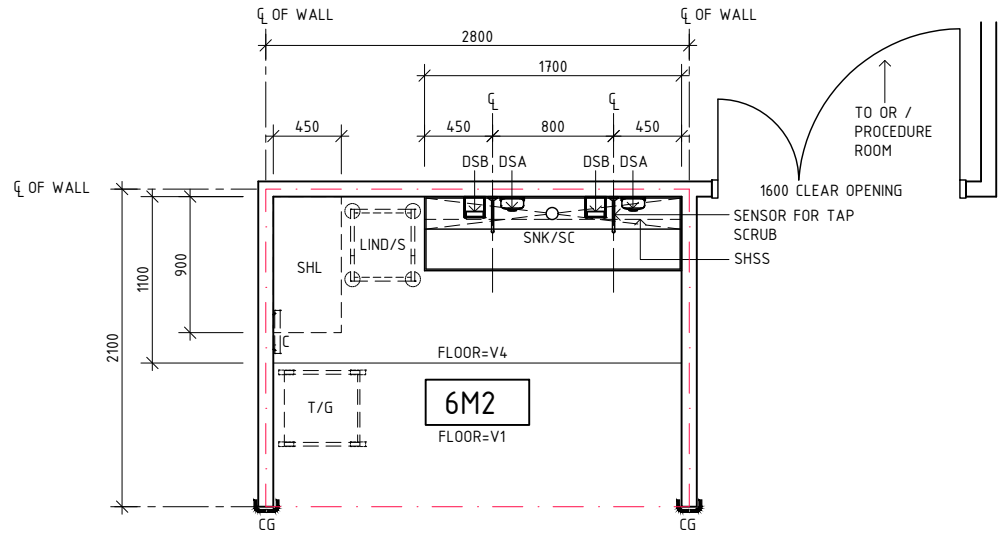
RLS Room Code

scrub-6-i

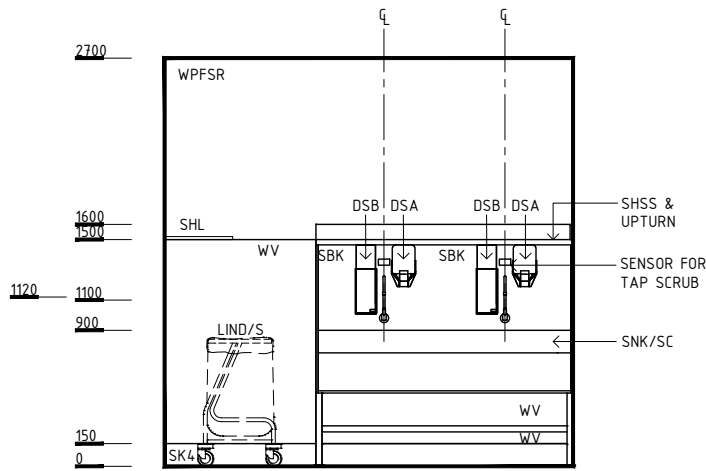
RDS Room Code

scrub-6-i

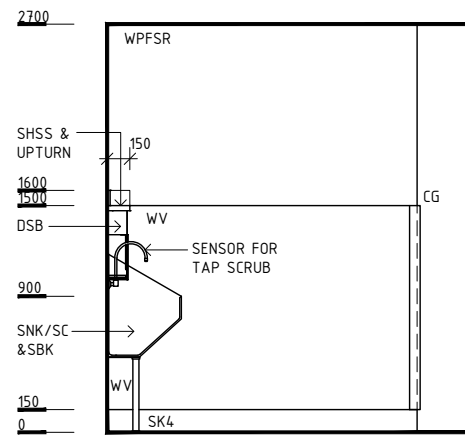
CG	CORNER GUARD
C	CLOCK
DSA	DISPENSER - ANTISEPTIC SOAP
DSB	DISPENSER - SCRUB BRUSH
LIND/S	LINEN CARRIER - DIRTY, SINGLE
SBK	SPLASHBACK
SHL	SHELF - LAMINATED
SHSS	SHELF - STAINLESS STEEL
SK4	FLOOR VINYL COVERED SKIRTING
SNK/SC	SINK - SCRUB TROUGH
T/G	TROLLEY - GOWNS
V1	VINYL FLOORING, STANDARD SLIP RESISTANT
V4	VINYL FLOORING, NON SLIP - SAFETY
WPFSR	WALL PAINT FINISH, SCRUB RESISTANT
WV	WALL VINYL



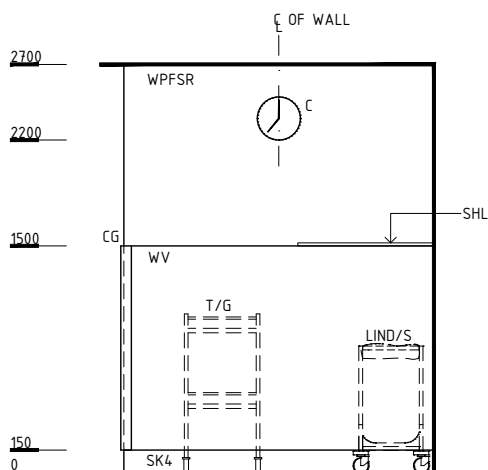
PLAN



ELEVATION 1



ELEVATION 2



ELEVATION 3

REV	DESCRIPTION	DATE	BY	REV	DESCRIPTION	DATE	BY	COMPATIBILITY
1	FIRST ISSUE	24.10.10	CC	4	GENERAL REVISION	31.10.22	RA	iHFG
2	GENERAL REVISION	30.08.11	SK					
3	GENERAL REVISION	31.10.12	KC					



International Health Facility Guidelines at:
www.healthdesign.com.au/iHFG
 Editable version of Standard Components on
 Health Facility Briefing System (HFBS) at:
www.healthdesign.com.au/TAHPI



DESIGNED	APPROVED	DATE	SCALE(S)	SHEET
RA	RH	31.10.22	1:50 in A3	1 OF 2
CAD FILE NAME		PAPER DRAWING ID		ISSUE
scrub-6-i		scrub-6-i-1		4

This document is for advisory purpose only

iHFG Standard Components

Room Layout Sheet

Room Name **Scrub Up/ Gowning, 6m2**

RLS Room Code

scrub-6-i

RDS Room Code

scrub-6-i

GENERAL NOTES:

THIS DRAWING TO BE READ IN CONJUNCTION WITH R.D.S. (ROOM DATA SHEETS) WHICH TAKES PRECEDENCE.

ALL SERVICES INDICATED ARE INDICATIVE AND SUBJECTED TO DETAILED PROJECT SPECIFIC ENGINEERING DESIGN.

CEILING LEGEND:

- PB PLASTERBOARD FLUSH SET CEILING, PAINT
- PC4 SHADOW ANGLE, POWDERCOAT ALUMINIUM CORNICE
- GRID LINE

- CEILING TYPE
- HEIGHT ABOVE F.F.L.

ELECTRICAL LEGEND:

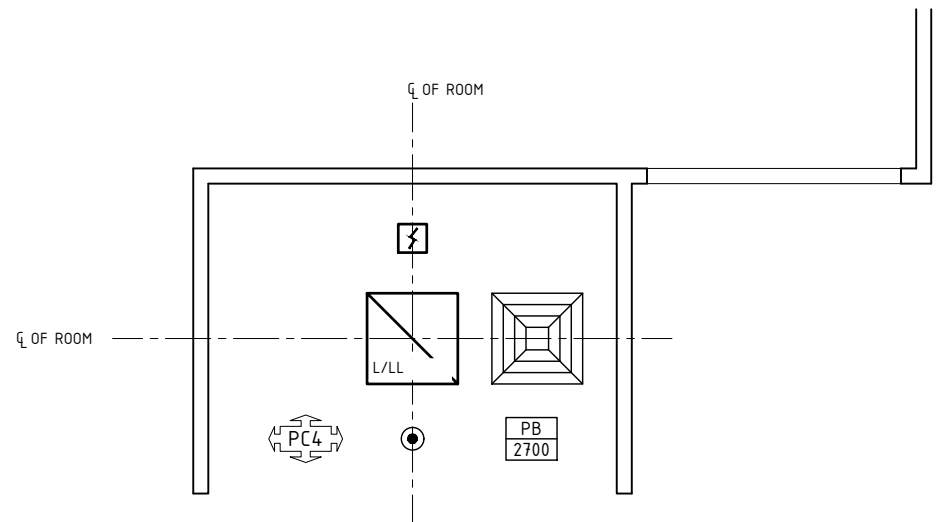
- LIGHT - LED LIGHT

MECHANICAL LEGEND:

- SUPPLY AIR GRILLE

FIRE SERVICES LEGEND:

- SMOKE DETECTOR
- SPRINKLER



REFLECTED CEILING PLAN

REV	DESCRIPTION	DATE	BY	REV	DESCRIPTION	DATE	BY	COMPATIBILITY
1	FIRST ISSUE	24.10.10	CC	4	GENERAL REVISION	31.10.22	RA	
2	GENERAL REVISION	30.08.11	SK					
3	GENERAL REVISION	31.10.12	KC					

	International Health Facility Guidelines at: www.healthdesign.com.au/iHFG Editable version of Standard Components on Health Facility Briefing System (HFBS) at: www.healthdesign.com.au ©TAHPI			DESIGNED	APPROVED	DATE	SCALE(S)	SHEET
	RA	RH		31.10.22	1:50 in A3	2 OF 2		
	CAD FILE NAME			PAPER DRAWING ID		ISSUE		
scrub-6-i		scrub-6-i-1		4				

This document is for advisory purpose only