

iHFG Standard Components

Room Layout Sheet

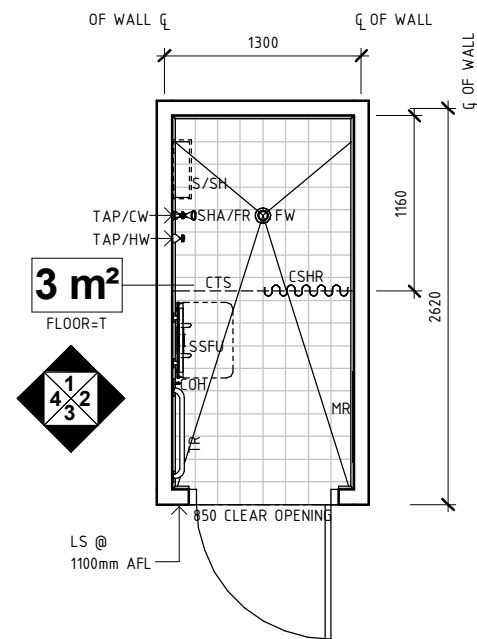
Room Name | Shower - Staff, 3m²

RLS Room Code SHST-3-I

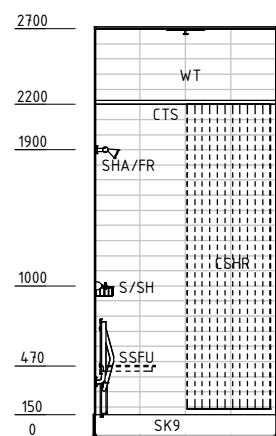
RDS Room Code SHST-3-I

Abbreviations

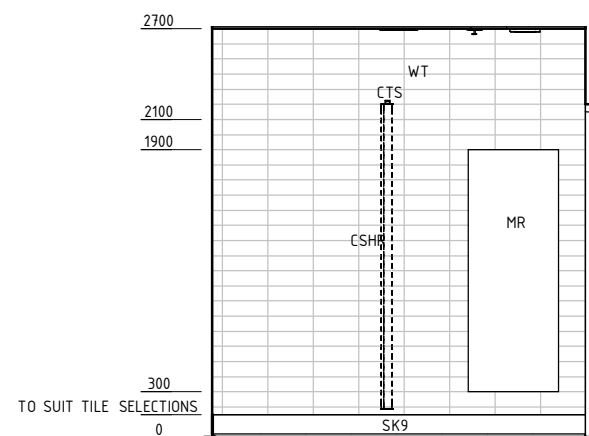
COH	COAT HOOK
CSHR	CURTAIN, SHOWER
CTS	CURTAIN TRACK: SHOWER
FW	FLOOR WASTE
LS	LIGHT SWITCH
MR	MIRROR
S/SH	SOAP, SHAMPOO HOLDER
SHA/FR	SHOWER: FIXED ROSE
SSFU	SHOWER SEAT: FOLD-UP
TAP/CW	TAPWARE: COLD WATER TAP
TAP/HW	TAPWARE: HOT WATER TAP
TR	TOWEL RAIL
SK9	TILE COVERED SKIRTING
WT	WALL TILE
T	TILE



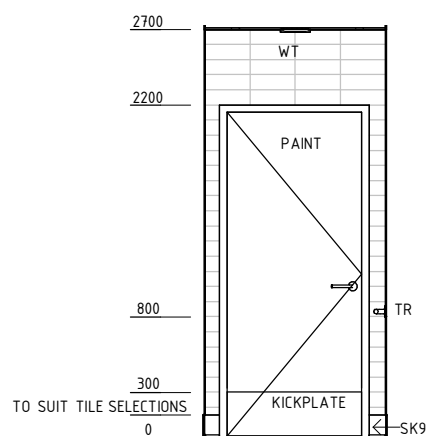
PLAN



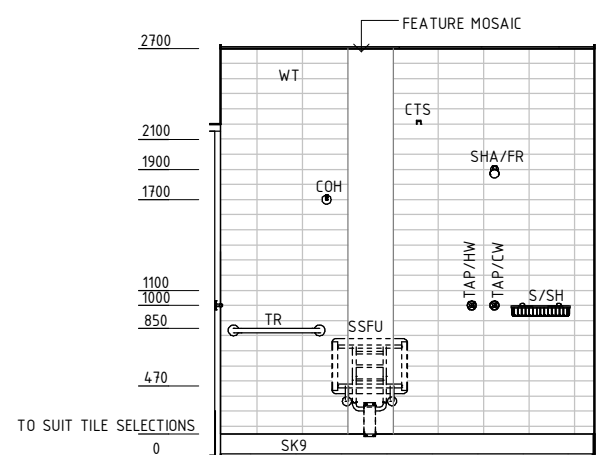
ELEVATION 1



ELEVATION 2



ELEVATION 3



ELEVATION 4

REV	DESCRIPTION	DATE	BY	REV	DESCRIPTION	DATE	BY	REV	DESCRIPTION	DATE	BY
1	FIRST ISSUE #	19.06.2015	NB								

iHFG Standard Components

Room Layout Sheet

Room Name | Shower - Staff, 3m²

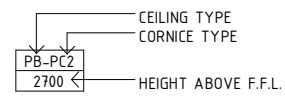
RLS Room Code SHST-3-I
RDS Room Code SHST-3-I

GENERAL NOTES:

THIS DRAWING TO BE READ IN CONJUNCTION WITH R.D.S. (ROOM DATA SHEETS) WHICH TAKES PRECEDENCE.

ALL SERVICES INDICATED ARE INDICATIVE AND SUBJECT TO DETAILED PROJECT SPECIFIC ENGINEERING DESIGN.

CEILING LEGEND:



WPB-PC4 | WATER RESISTANT PLASTERBOARD FLUSH SET CEILING, PAINT FINISH WITH POWDERCOAT ALUMINIUM CORNICE, SHADOW LINE
 TILE CEILING GRID (1200 x 600)
 GRID LINE

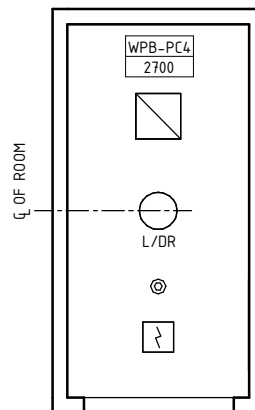
ELECTRICAL LEGEND:



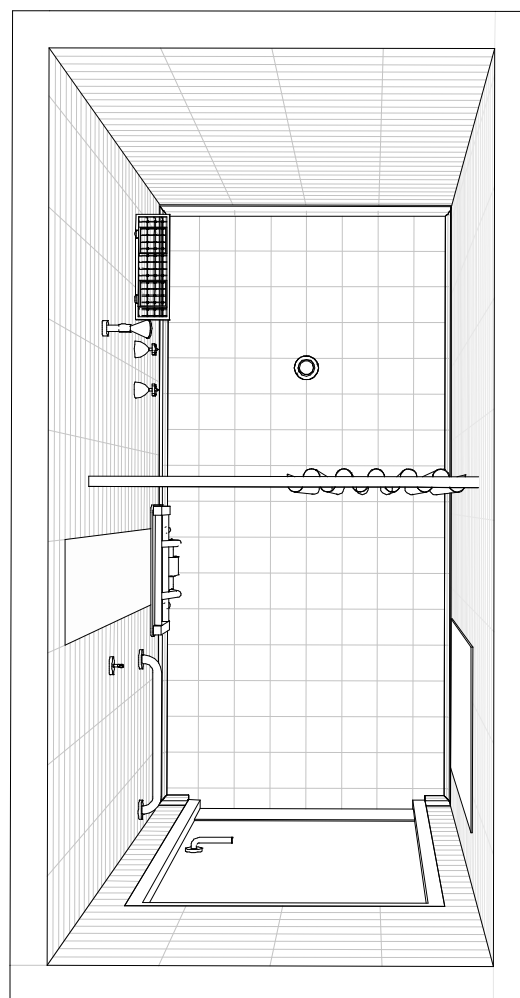
MECHANICAL LEGEND:



FIRE SERVICES LEGEND:



REFLECTED CEILING PLAN



PERSPECTIVE - PLAN VIEW

REV	DESCRIPTION	DATE	BY	REV	DESCRIPTION	DATE	BY	REV	DESCRIPTION	DATE	BY
1	FIRST ISSUE #	19.06.2015	NB								

iHFG Standard Components

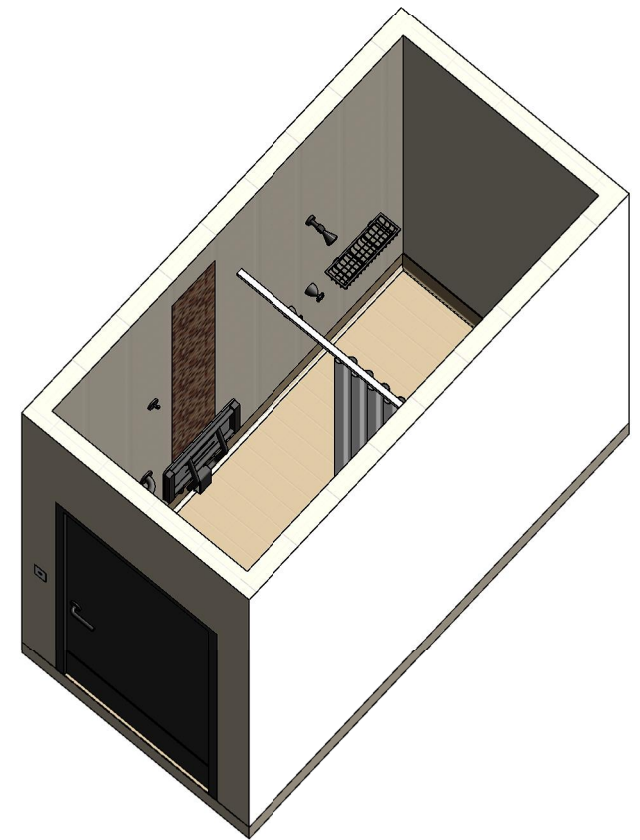
Room Layout Sheet

Room Name | Shower - Staff, 3m²

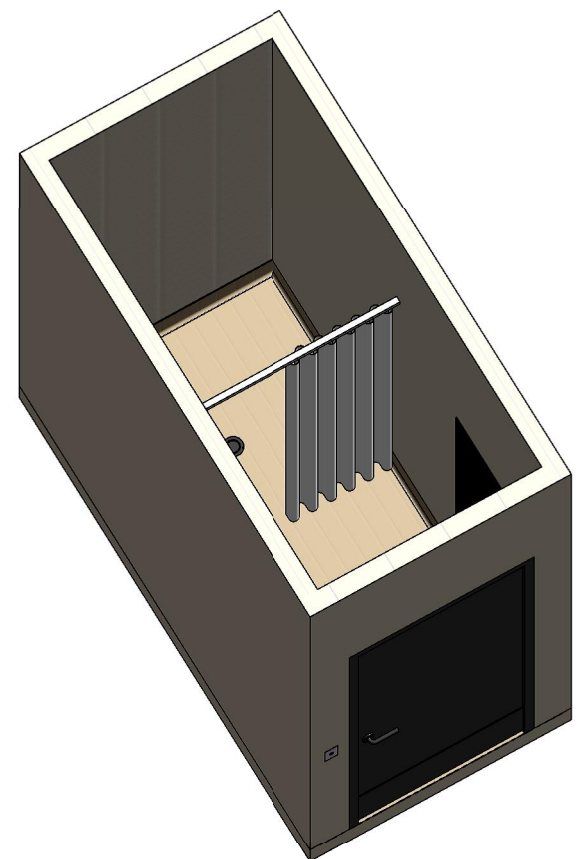
RLS Room Code SHST-3-I
RDS Room Code SHST-3-I



PERSPECTIVE 01



ISOMETRIC VIEW 01



ISOMETRIC VIEW 02

REV	DESCRIPTION	DATE	BY	REV	DESCRIPTION	DATE	BY	REV	DESCRIPTION	DATE	BY
1	FIRST ISSUE #	19.06.2015	NB								



The International Health Facility Guidelines recommends the use of HFBS “Health Facility Briefing System” to edit all room data sheet information for your project.

HFBS provides edit access to all iHFG standard rooms, and departments, and more than 100 custom report templates.

HFBS Health Facility Briefing System



Briefing Module

The Health Facility Briefing System (HFBS) has numerous modules available via annual subscription. It suits healthcare Architects, Medical Planners, Equipment Planners Project Managers and Health Authorities.

Use the HFBS Briefing Module to quickly drag in health facility departments or pre-configured room templates from the iHFG standard, edit the room features such as finishes, furniture, fittings, fixtures, medical equipment, engineering services. The system can print or download as PDF more than 100 custom reports including room data sheets, schedules, and more...

To learn more about the HFBS web-based Healthcare Briefing and Design Software and to obtain editable versions of the “Standard Components” including Room Data Sheets (RDS) and Room Layout Sheets (RLS) offered on the iHFG website, signup for HFBS using the link below.

Get Started Now:
hfbs.healthdesign.com.au

- ✓ iHFG Room Data Sheets and Departments are instantly editable in the HFBS software available online.
- ✓ You can access hundreds of report templates to print your iHFG room data in HFBS.
- ✓ HFBS has a onetime free 3 day trial available to all new users.

Get Started Now:
hfbs.healthdesign.com.au



HFBS

Health Facility Briefing System

hfbsinfo.com | techsupport@healthdesign.com.au