

# iHFG Standard Components

## Room Layout Sheet

RLS Room Code

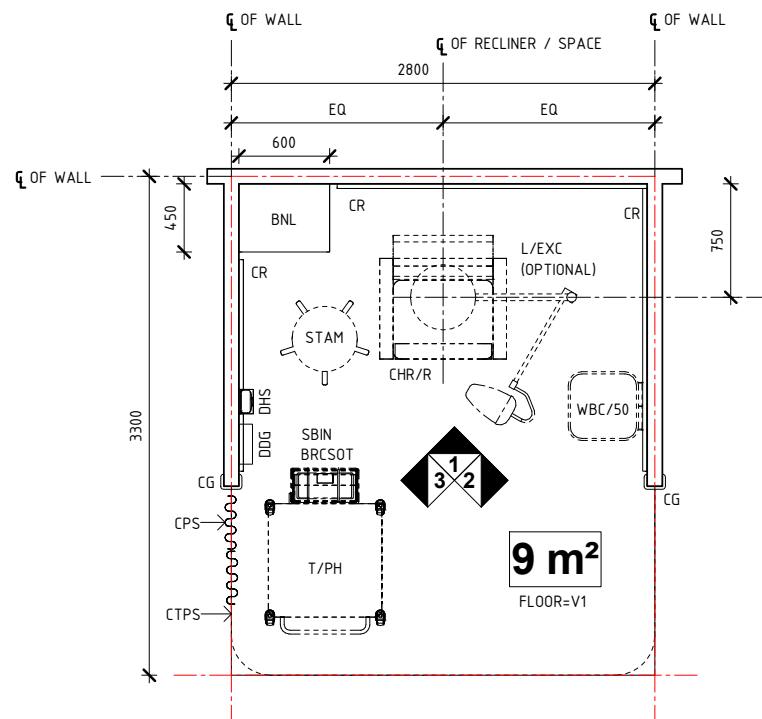
specc-i

RDS Room Code

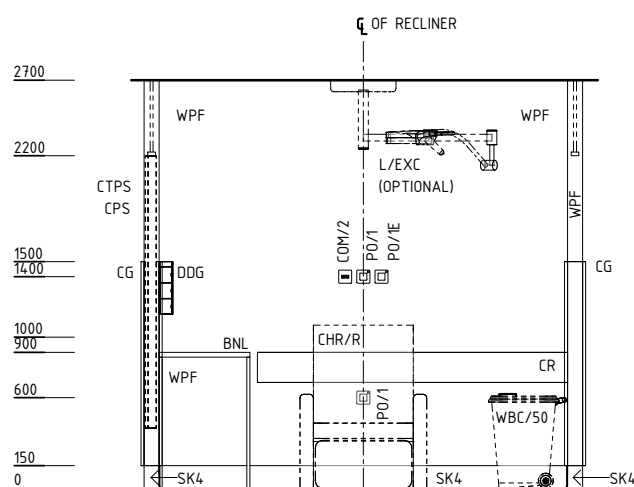
specc-i

Room Name **Specimen Collection Bay , 9 m<sup>2</sup>**

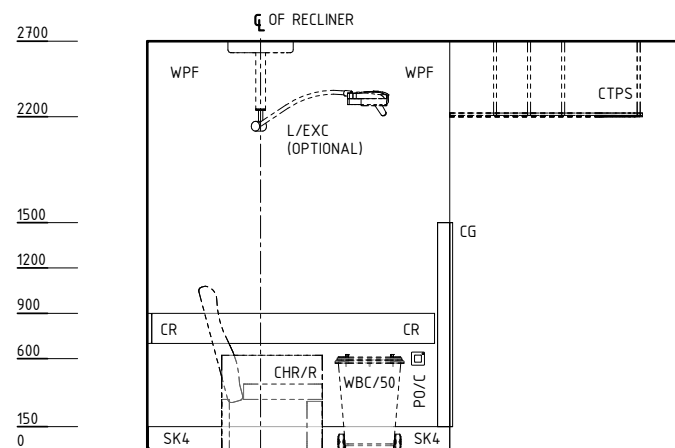
- BNL BENCH - LAMINATE
- BRCST BRACKET - SHARPS ON TROLLEY
- CG CORNER GUARD
- CHR/R CHAIR - RECLINER
- COM/2 COMMUNICATION OUTLET - DOUBLE
- CPS CURTAIN - PRIVACY SCREEN
- CR CRASH RAIL
- CTPS CURTAIN TRACK - PRIVACY SCREEN
- DDG DISPENSER - DISPOSABLE GLOVES
- DHS DISPENSER - HAND SANITISER
- L/EXC LIGHT - EXAMINATION, CEILING MOUNTED
- L/LL LIGHT - LED LIGHT
- PO/1 POWER OUTLET - SINGLE
- PO/IE POWER OUTLET - EMERGENCY, SINGLE
- PO/C POWER OUTLET - CLEANER'S
- SBIN SHARPS BIN
- SBINT SHARPS BIN - ON TROLLEY
- SK4 FLOOR VINYL COVERED SKIRTING
- STAM STOOL - ADJUSTABLE, MOBILE
- T/PH TROLLEY - PHLEBOTOMY
- V1 VINYL FLOORING, STANDARD SLIP RESISTANT
- WBC/50 WASTE BIN - CLINICAL, 50 LITRE
- WPF WALL PAINT FINISH



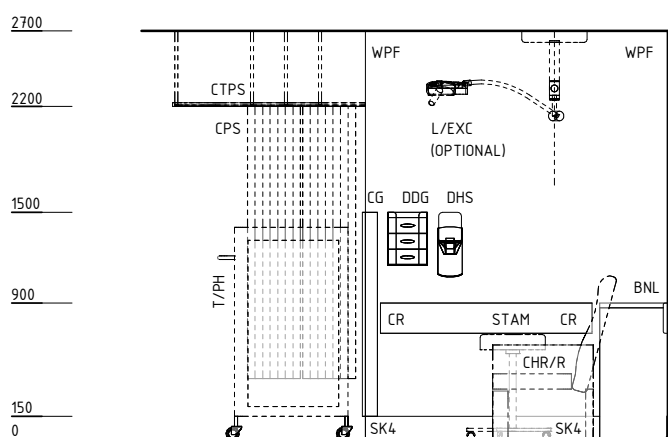
**PLAN**



**ELEVATION 1**



**ELEVATION 2**



**ELEVATION 3**

REV	DESCRIPTION	DATE	BY	REV	DESCRIPTION	DATE	BY	COMPATIBILITY																				
1	FIRST ISSUE	24.10.10	LL	4	GENERAL REVISION	06.12.22	BV																					
2	GENERAL REVISION	30.08.11	SK																									
3	GENERAL REVISION	31.10.12	KC																									
								<table border="1"> <thead> <tr> <th>DESIGNED</th> <th>APPROVED</th> <th>DATE</th> <th>SCALE(S)</th> <th>SHEET</th> </tr> </thead> <tbody> <tr> <td>BV</td> <td>RH</td> <td>06.12.22</td> <td>1 : 50</td> <td>1 OF 2</td> </tr> <tr> <td colspan="2">REVIT FILE NAME</td> <td colspan="2">PAPER DRAWING ID</td> <td>ISSUE</td> </tr> <tr> <td colspan="2">specc-i</td> <td colspan="2">specc-i-1</td> <td>4</td> </tr> </tbody> </table>	DESIGNED	APPROVED	DATE	SCALE(S)	SHEET	BV	RH	06.12.22	1 : 50	1 OF 2	REVIT FILE NAME		PAPER DRAWING ID		ISSUE	specc-i		specc-i-1		4
DESIGNED	APPROVED	DATE	SCALE(S)	SHEET																								
BV	RH	06.12.22	1 : 50	1 OF 2																								
REVIT FILE NAME		PAPER DRAWING ID		ISSUE																								
specc-i		specc-i-1		4																								

**iHFG** International Health Facility Guidelines

International Health Facility Guidelines at:  
[www.healthdesign.com.au/iHFG](http://www.healthdesign.com.au/iHFG)  
 Editable version of Standard Components on  
 Health Facility Briefing System (HFBS) at:  
[www.healthdesign.com.au](http://www.healthdesign.com.au) ©TAHPI



# iHFG Standard Components

## Room Layout Sheet

RLS Room Code

specc-i

RDS Room Code

specc-i

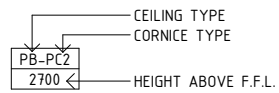
Room Name | **Specimen Collection Bay , 9 m<sup>2</sup>**

### GENERAL NOTES:

THIS DRAWING TO BE READ IN CONJUNCTION WITH R.D.S. (ROOM DATA SHEETS) WHICH TAKES PRECEDENCE.

ALL SERVICES INDICATED ARE INDICATIVE AND SUBJECTED TO DETAILED PROJECT SPECIFIC ENGINEERING DESIGN.

### CEILING LEGEND:




PB-PC3 PLASTERBOARD FLUSH SET CEILING, PAINT FINISH WITH PLASTERBOARD SQUARE SET CORNICE

--- GRID LINE

### ELECTRICAL LEGEND:

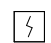
○ L/LL LIGHT - LED LIGHT

### MECHANICAL LEGEND:

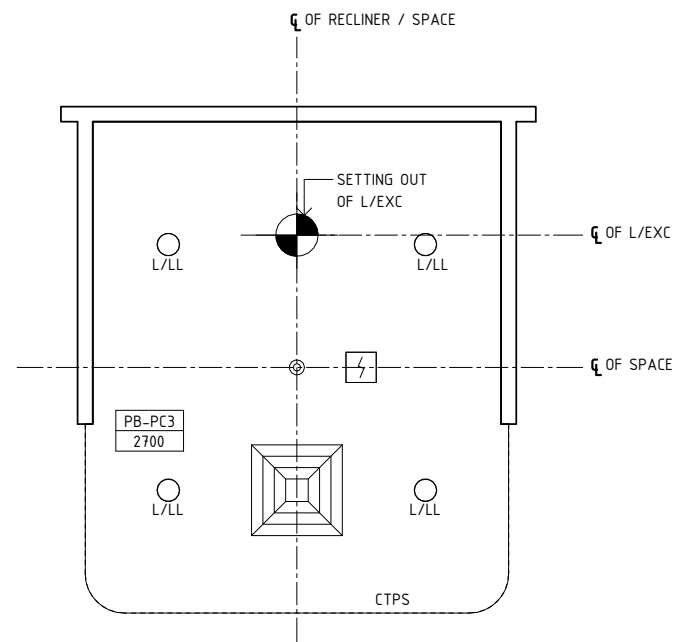
 SUPPLY AIR GRILLE

 RETURN AIR GRILLE

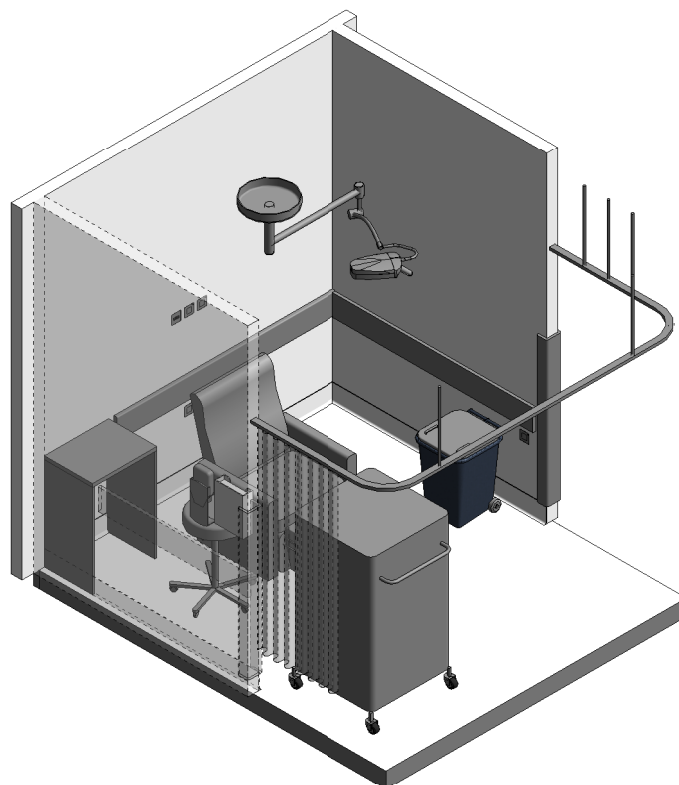
### FIRE SERVICES LEGEND:

 SMOKE DETECTOR

 SPRINKLER



**REFLECTED CEILING PLAN**



**ISOMETRIC VIEW**

REV	DESCRIPTION	DATE	BY	REV	DESCRIPTION	DATE	BY	COMPATIBILITY				
1	FIRST ISSUE	24.10.10	LL	4	GENERAL REVISION	06.12.22	BV	iHFG				
2	GENERAL REVISION	30.08.11	SK									
3	GENERAL REVISION	31.10.12	KC									
								DESIGNED	APPROVED	DATE	SCALE(S)	SHEET
								BV	RH	06.12.22	1 : 50	2 OF 2
								REVIT FILE NAME		PAPER DRAWING ID		ISSUE
								specc-i		specc-i-2		4