

iHFG Standard Components

Room Layout Sheet

RLS Room Code

spec-i

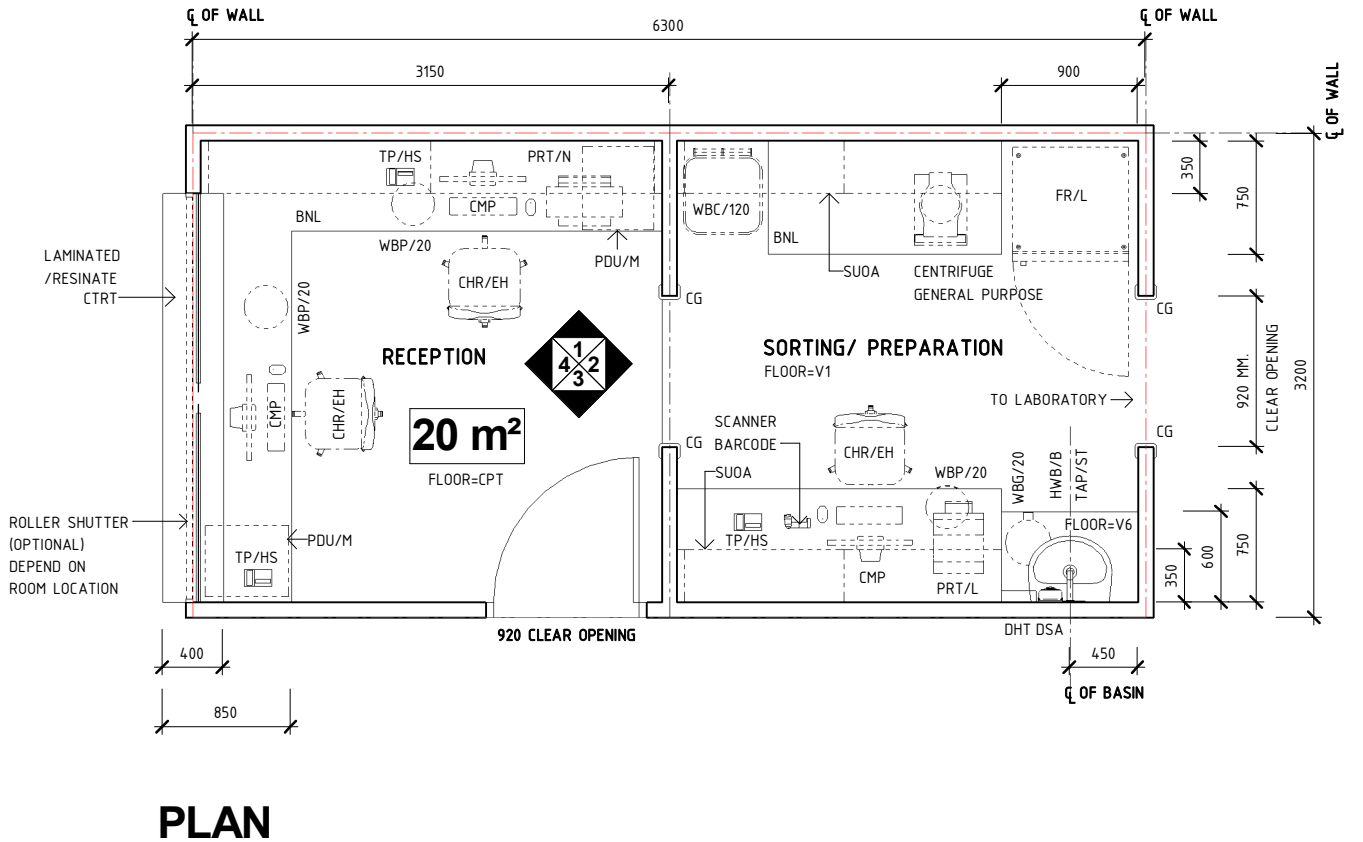
Room Name

Specimen Reception/ Sort/ Preparation

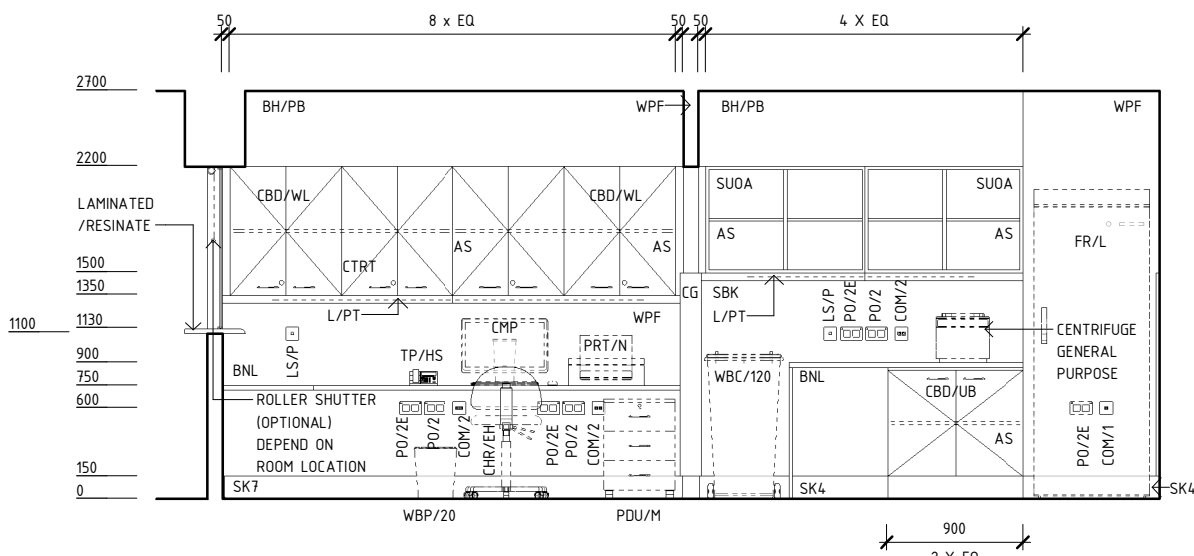
RDS Room Code

spec-i

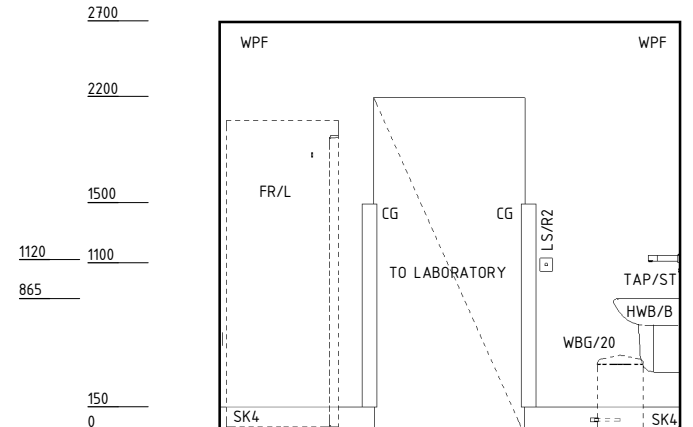
- AS ADJUSTABLE SHELF
- BH/PB BULKHEAD - PLASTERBOARD, PAINT FINISH
- BNL BENCH - LAMINATE
- CBD/UB CUPBOARD - UNDER BENCH
- CBD/WL CUPBOARD - WALL MOUNTED, LOCKABLE
- CG CORNER GUARD
- CHR/EH CHAIR - ERGONOMIC, HIGH
- CMP COMPUTER
- COM/1 COMMUNICATION OUTLET - SINGLE
- COM/2 COMMUNICATION OUTLET - DOUBLE
- CPT CARPET
- CTRT COUNTER TOP
- DFP DOOR AND DOOR FRAME PROTECTION
- DHT DISPENSER - PAPER HAND TOWEL
- DSA DISPENSER - SOAP, ANTISEPTIC
- FR/L FRIDGE - LABORATORY
- HWB/B HAND WASH BASIN - TYPE 'B'
- L/PT LIGHT - PELMET TASK LIGHT
- LS/P LIGHT SWITCH - PELMET TASK LIGHT
- LS/R2 LIGHT SWITCH - ROOM, 2 WAY
- PDU/M PEDESTAL DRAWER UNIT - MOBILE
- PO/2 POWER OUTLET - DOUBLE
- PO/2E POWER OUTLET - EMERGENCY, DOUBLE
- PO/C POWER OUTLET - CLEANER'S
- PRT/L PRINTER - LABEL
- PRT/N PRINTER - NETWORKED
- SBK SPLASHBACK
- SK4 FLOOR VINYL COVERED SKIRTING
- SK7 TIMBER SKIRTING
- SSSG SECURITY SCREEN - SAFETY GLASS
- SUOA SHELVING UNIT - OVER BENCH, ADJUSTABLE
- TAP/ST TAPWARE - SENSOR TAP
- TP/HS TELEPHONE - HANDSET, STANDARD
- V1 VINYL FLOORING, STANDARD SLIP RESISTANT
- V6 VINYL FLOORING, NON SLIP - TEXTURED
- WBC/120 WASTE BIN - CLINICAL, 120 LITRE
- WBG/20 WASTE BIN - GENERAL, 20 LITRE
- WBP/20 WASTE BIN - PAPER, 20 LITRE
- WPF WALL PAINT FINISH



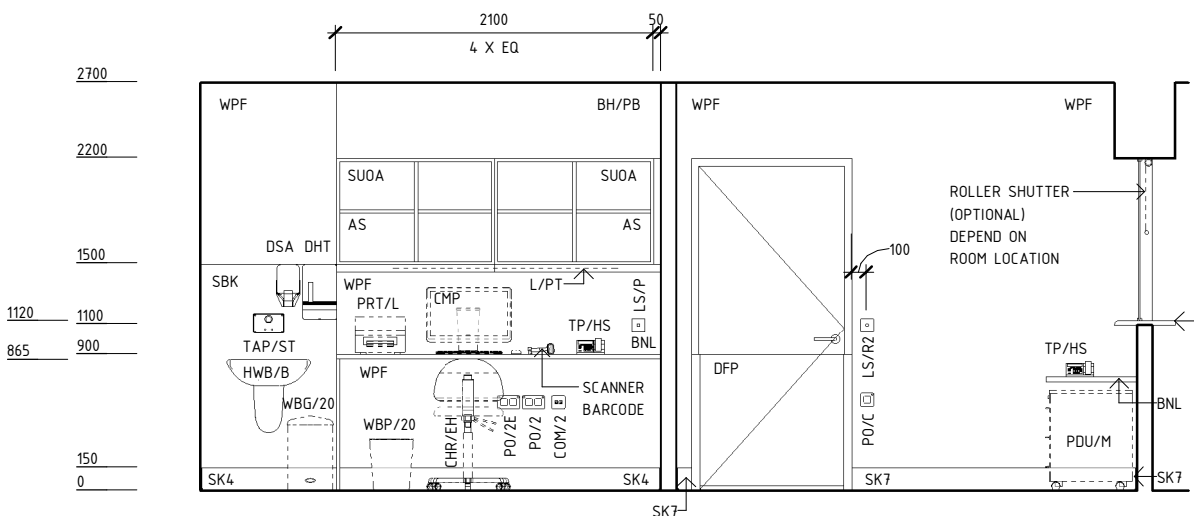
PLAN



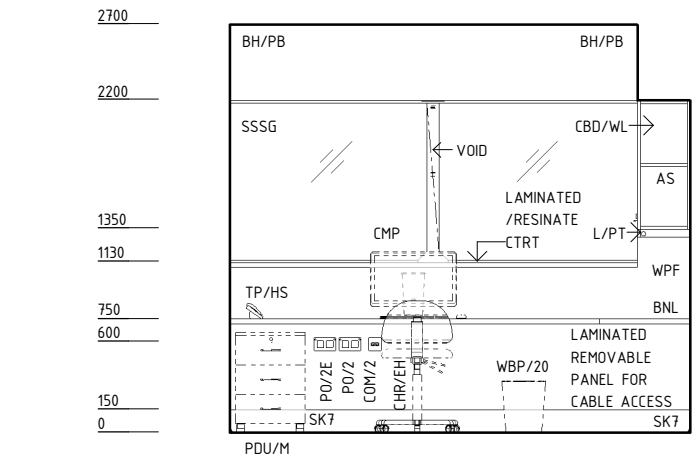
ELEVATION 1



ELEVATION 2



ELEVATION 3



ELEVATION 4

REV	DESCRIPTION	DATE	BY	REV	DESCRIPTION	DATE	BY	COMPATIBILITY
1	FIRST ISSUE	24.10.10	LL	4	GENERAL REVISION	27.01.23	AM	iHFG
2	GENERAL REVISION	30.08.11	SK					
3	GENERAL REVISION	31.10.12	KC					

iHFG Standard Components

Room Layout Sheet

RLS Room Code

spec-i

Room Name

Specimen Reception/ Sort/ Preparation

RDS Room Code

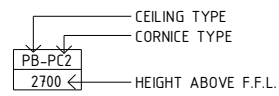
spec-i

GENERAL NOTES:

THIS DRAWING TO BE READ IN CONJUNCTION WITH R.D.S. (ROOM DATA SHEETS) WHICH TAKES PRECEDENCE.

ALL SERVICES INDICATED ARE INDICATIVE AND SUBJECT TO DETAILED PROJECT SPECIFIC ENGINEERING DESIGN.

CEILING LEGEND:

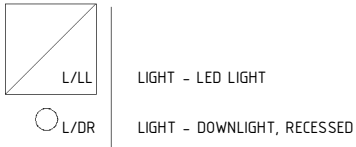


ACT-PC5 ACOUSTIC CEILING TILES WITH POWDERCOAT ALUMINIUM CORNICE, ANGEL FLUSH AGAINST WALL

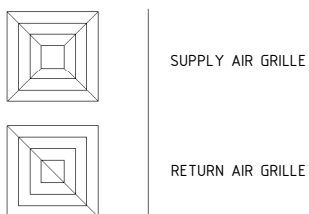
BH/PB BULKHEAD - PLASTERBOARD, PAINT FINISH

TILE CEILING 600 X 600

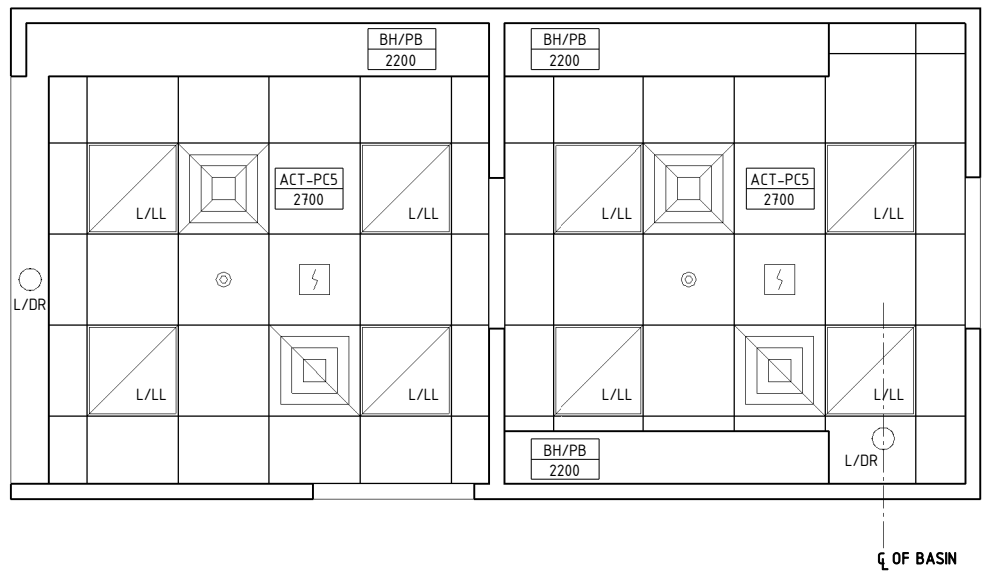
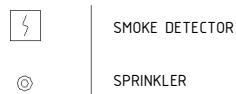
ELECTRICAL LEGEND:



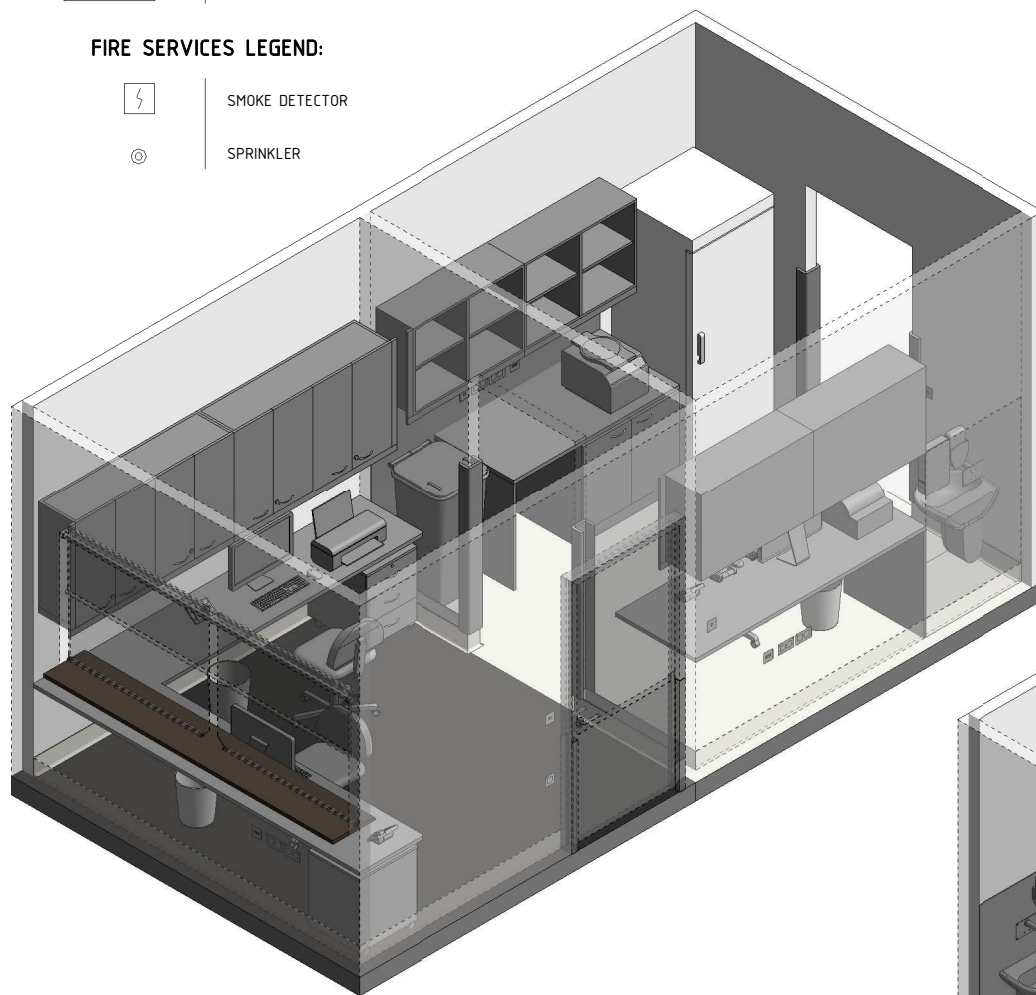
MECHANICAL LEGEND:



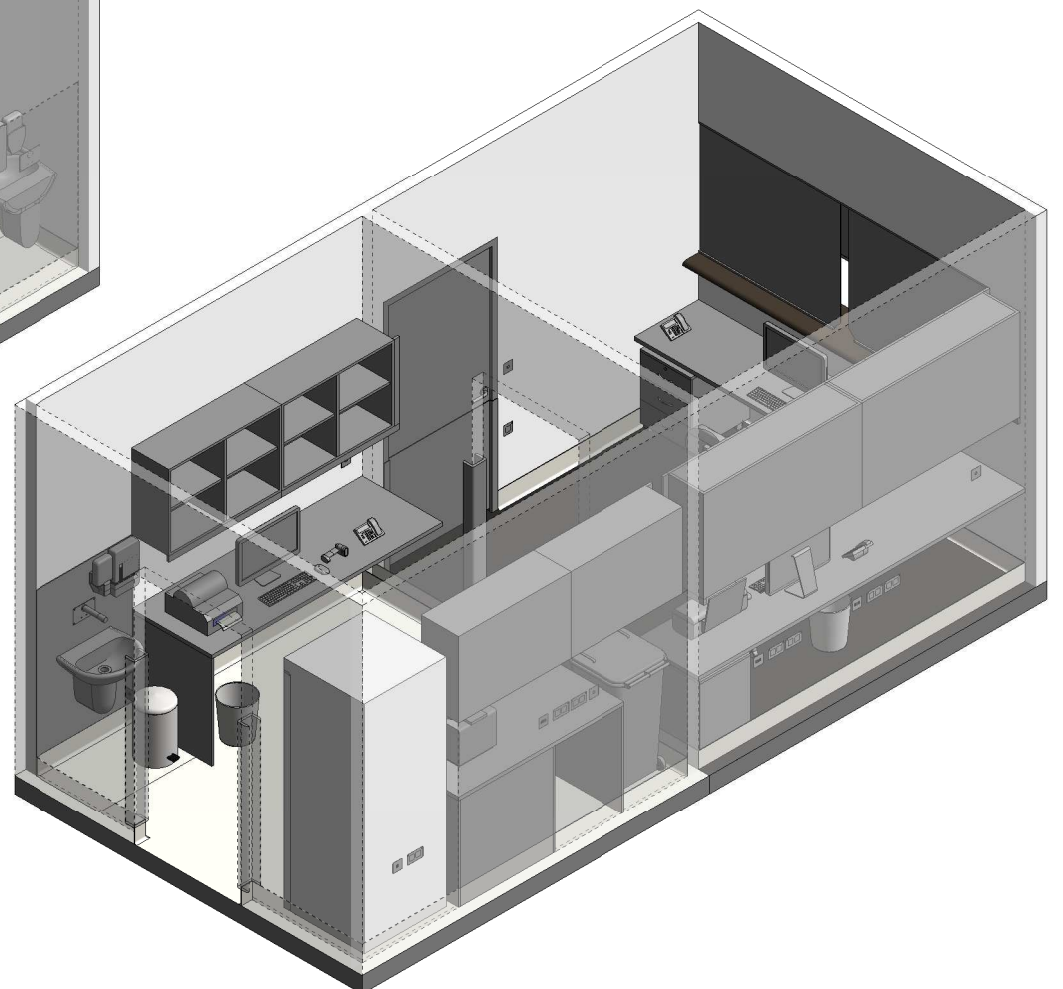
FIRE SERVICES LEGEND:



REFLECTED CEILING PLAN



ISOMETRIC VIEW 01



ISOMETRIC VIEW 02

REV	DESCRIPTION	DATE	BY	REV	DESCRIPTION	DATE	BY	COMPATIBILITY																				
1	FIRST ISSUE	24.10.10	LL	4	GENERAL REVISION	27.01.23	AM																					
2	GENERAL REVISION	30.08.11	SK																									
3	GENERAL REVISION	31.10.12	KC																									
								<table border="1"> <thead> <tr> <th>DESIGNED</th> <th>APPROVED</th> <th>DATE</th> <th>SCALE(S)</th> <th>SHEET</th> </tr> </thead> <tbody> <tr> <td>AM</td> <td>SA</td> <td>27.01.23</td> <td>1 : 50</td> <td>2 OF 2</td> </tr> <tr> <td colspan="2">REVIT FILE NAME</td> <td colspan="2">PAPER DRAWING ID</td> <td>ISSUE</td> </tr> <tr> <td colspan="2">spec-i</td> <td colspan="2">spec-i-2</td> <td>4</td> </tr> </tbody> </table>	DESIGNED	APPROVED	DATE	SCALE(S)	SHEET	AM	SA	27.01.23	1 : 50	2 OF 2	REVIT FILE NAME		PAPER DRAWING ID		ISSUE	spec-i		spec-i-2		4
DESIGNED	APPROVED	DATE	SCALE(S)	SHEET																								
AM	SA	27.01.23	1 : 50	2 OF 2																								
REVIT FILE NAME		PAPER DRAWING ID		ISSUE																								
spec-i		spec-i-2		4																								