

# iHFG Standard Components

## Room Layout Sheet

RLS Room Code

sstn-20-i

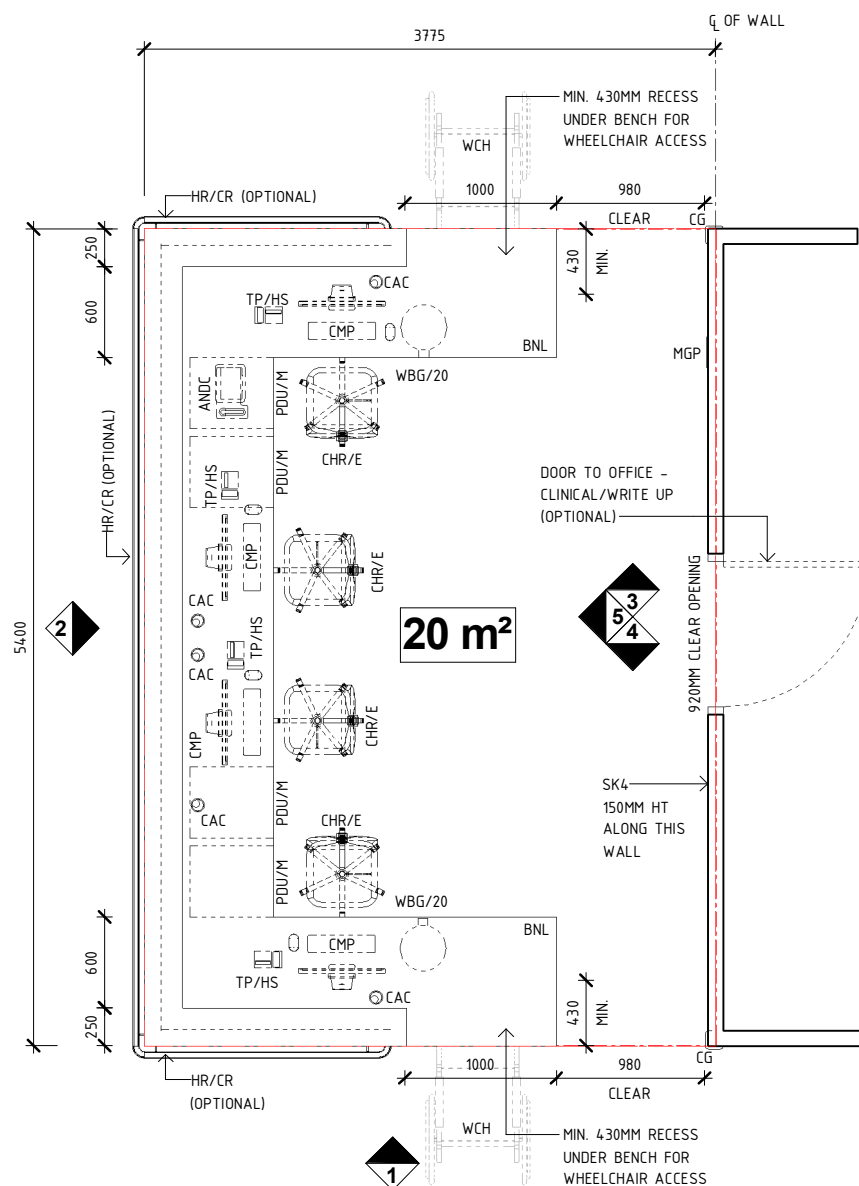
RDS Room Code

sstn-20-i

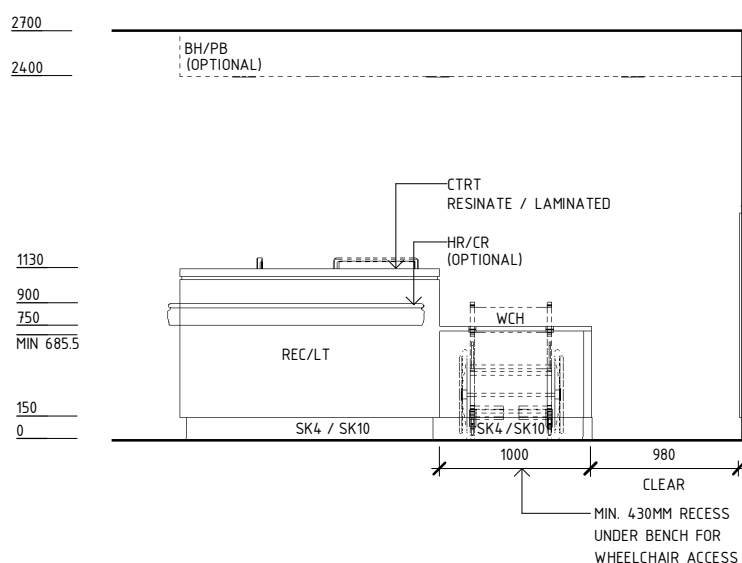
Room Name

Staff Station, 20m<sup>2</sup>

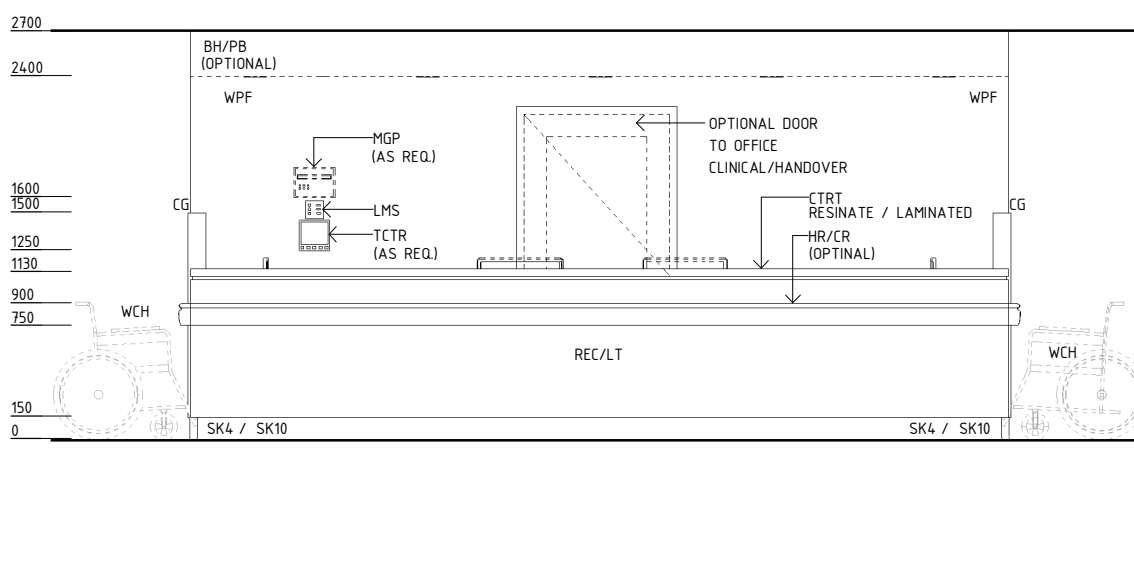
ANDC	ANNUNCIATOR - DESKTOP CONSOLE
BH/PB	BULKHEAD - PLASTERBOARD, PAINT FINISH
BNL	BENCH - LAMINATE
CAC	CABLE ACCESS CAP
CG	CORNER GUARD
CHR/E	CHAIR - ERGONOMIC, OFFICE
CMP	COMPUTER
CTRT	COUNTER TOP
HR/CR	HANDRAIL/ CRASH RAIL
LMS	LIGHTS MULTIGANG SWITCHPLATE
MGP	MEDICAL GAS ALARM PANEL
PDU/M	PEDESTAL DRAWER UNIT - MOBILE
REC/LT	RECEPTION DESK - LAMINATE/ TIMBER
SK4	FLOOR VINYL COVERED SKIRTING
SK10	LAMINATE SKIRTING
TCTR	TEMPERATURE CONTROL
TP/HS	TELEPHONE - HANDSET, STANDARD
WBG/20	WASTE BIN - GENERAL, 20 LITRE
WCH	WHEELCHAIR
WPF	WALL PAINT FINISH



PLAN



ELEVATION 1



ELEVATION 2

REV	DESCRIPTION	DATE	BY	REV	DESCRIPTION	DATE	BY	COMPATIBILITY
1	FIRST ISSUE	24.10.10	LL	4	GENERAL REVISION	27.01.23	AM	
2	GENERAL REVISION	30.08.11	SK					
3	GENERAL REVISION	31.10.12	KC					

	DESIGNED	APPROVED	DATE	SCALE(S)	SHEET
	AM	SA	27.01.23	1 : 50	1 OF 3
	REVIT FILE NAME	PAPER DRAWING ID		ISSUE	
	sstn-20-i	sstn-20-i-1		4	

This document is for advisory purpose only

International Health Facility Guidelines

International Health Facility Guidelines at: [www.healthdesign.com.au/iHFG](http://www.healthdesign.com.au/iHFG)  
 Editable version of Standard Components on Health Facility Briefing System (HFBS) at: [www.healthdesign.com.au](http://www.healthdesign.com.au) ©TAHPI



DESIGNED	APPROVED	DATE	SCALE(S)	SHEET
AM	SA	27.01.23	1 : 50	1 OF 3
REVIT FILE NAME	PAPER DRAWING ID		ISSUE	
sstn-20-i	sstn-20-i-1		4	

# iHFG Standard Components

## Room Layout Sheet

RLS Room Code

sstn-20-i

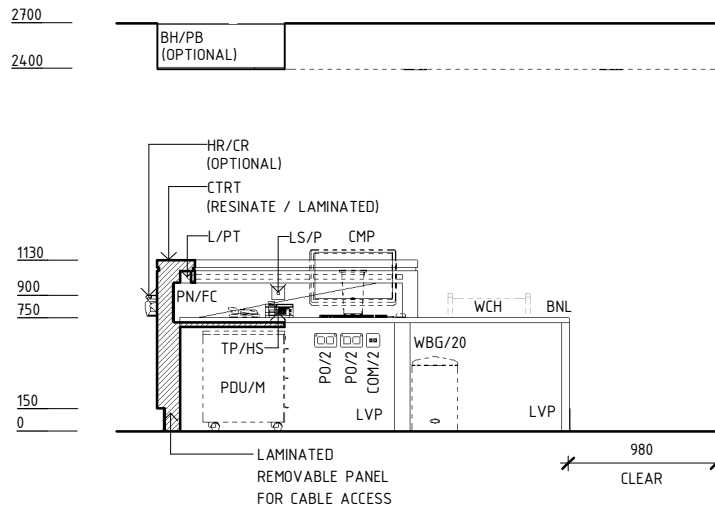
RDS Room Code

sstn-20-i

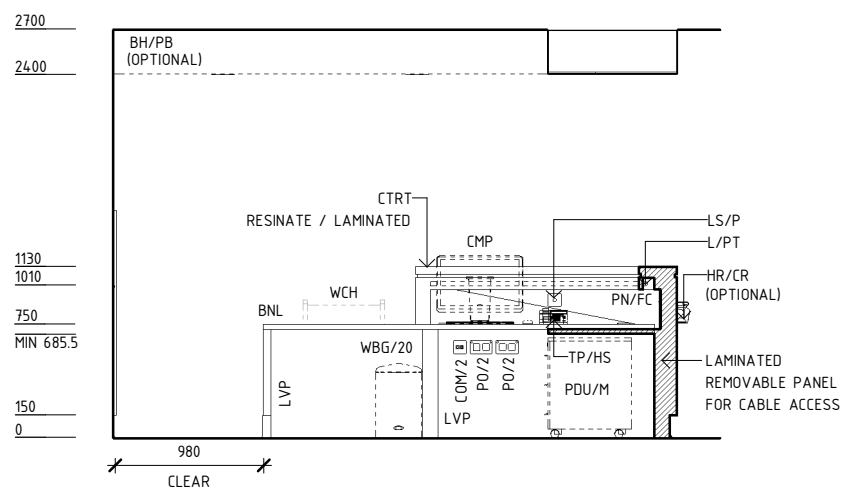
Room Name

Staff Station, 20m2

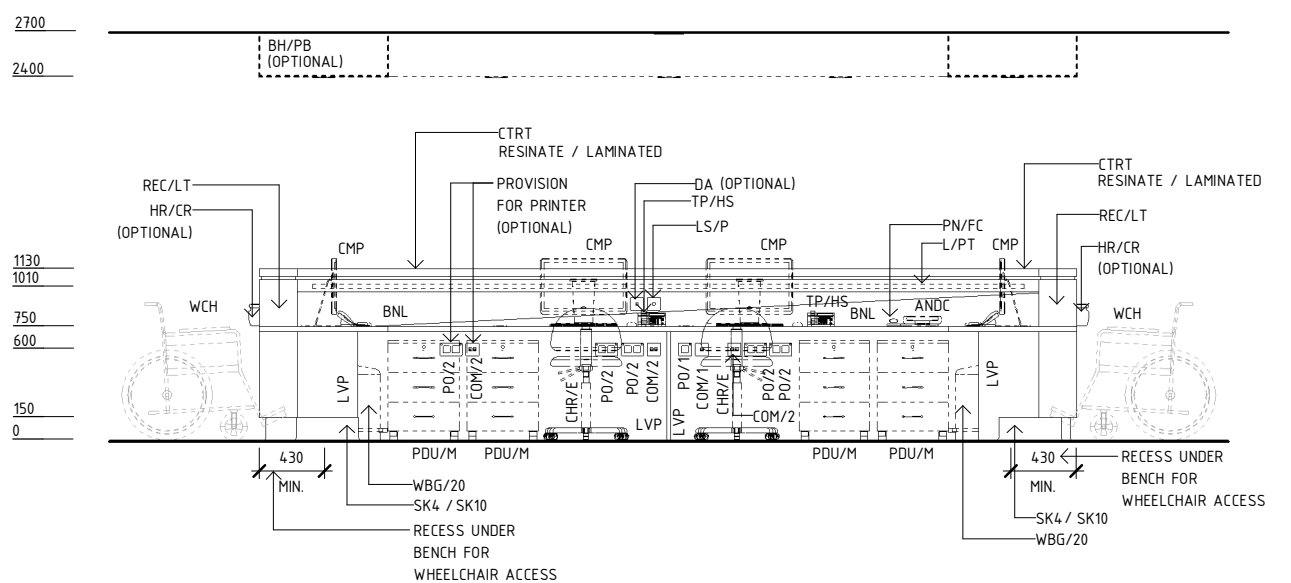
ANDC	ANNUNCIATOR - DESKTOP CONSOLE
BH/PB	BULKHEAD - PLASTERBOARD, PAINT FINISH
BNL	BENCH - LAMINATE
CHR/E	CHAIR - ERGONOMIC, OFFICE
CMP	COMPUTER
COM/1	COMMUNICATION OUTLET - SINGLE
COM/2	COMMUNICATION OUTLET - DOUBLE
CTRT	COUNTER TOP
DA	DURESS ALARM
HR/CR	HANDRAIL/ CRASH RAIL
L/PT	LIGHT - PELMET TASK LIGHT
LS/P	LIGHT SWITCH - PELMET TASK LIGHT
LVP	LAMINATE VERTICAL SUPPORT PANEL
PDU/M	PEDESTAL DRAWER UNIT - MOBILE
PN/FC	PINBOARD - FABRIC COVERED
PO/1	POWER OUTLET - SINGLE
PO/2	POWER OUTLET - DOUBLE
REC/LT	RECEPTION DESK - LAMINATE/ TIMBER
SK4	FLOOR VINYL COVERED SKIRTING
SK10	LAMINATE SKIRTING
TP/HS	TELEPHONE - HANDSET, STANDARD
WBG/20	WASTE BIN - GENERAL, 20 LITRE
WCH	WHEELCHAIR



**ELEVATION 3**



**ELEVATION 4**



**ELEVATION 5**

REV	DESCRIPTION	DATE	BY	REV	DESCRIPTION	DATE	BY	COMPATIBILITY																				
1	FIRST ISSUE	24.10.10	LL	4	GENERAL REVISION	27.01.23	AM																					
2	GENERAL REVISION	30.08.11	SK																									
3	GENERAL REVISION	31.10.12	KC																									
								<table border="1"> <thead> <tr> <th>DESIGNED</th> <th>APPROVED</th> <th>DATE</th> <th>SCALE(S)</th> <th>SHEET</th> </tr> </thead> <tbody> <tr> <td>AM</td> <td>SA</td> <td>27.01.23</td> <td>1 : 50</td> <td>2 OF 3</td> </tr> <tr> <td colspan="2">REVIT FILE NAME</td> <td colspan="2">PAPER DRAWING ID</td> <td>ISSUE</td> </tr> <tr> <td colspan="2">sstn-20-i</td> <td colspan="2">sstn-20-i-2</td> <td>4</td> </tr> </tbody> </table>	DESIGNED	APPROVED	DATE	SCALE(S)	SHEET	AM	SA	27.01.23	1 : 50	2 OF 3	REVIT FILE NAME		PAPER DRAWING ID		ISSUE	sstn-20-i		sstn-20-i-2		4
DESIGNED	APPROVED	DATE	SCALE(S)	SHEET																								
AM	SA	27.01.23	1 : 50	2 OF 3																								
REVIT FILE NAME		PAPER DRAWING ID		ISSUE																								
sstn-20-i		sstn-20-i-2		4																								

**iHFG** International Health Facility Guidelines

International Health Facility Guidelines at:  
www.healthdesign.com.au/iHFG  
Editable version of Standard Components on  
Health Facility Briefing System (HFBS) at:  
www.healthdesign.com.au ©TAHPI



This document is for advisory purpose only

# iHFG Standard Components

## Room Layout Sheet

RLS Room Code

sstn-20-i

RDS Room Code

sstn-20-i

Room Name

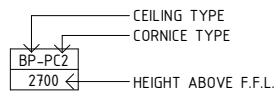
Staff Station, 20m2

### GENERAL NOTES:

THIS DRAWING TO BE READ IN CONJUNCTION WITH R.D.S. (ROOM DATA SHEETS) WHICH TAKES PRECEDENCE.

ALL SERVICES INDICATED ARE INDICATIVE AND SUBJECT TO DETAILED PROJECT SPECIFIC ENGINEERING DESIGN.

### CEILING LEGEND:



ACT-PC4 ACOUSTIC CEILING TILES WITH POWDERCOAT ALUMINIUM CORNICE, FLUSHED AGAINST WALL  
BH/PB PLASTERBOARD BULKHEAD, PAINT FINISH

TILE CEILING GRID (600 x 600)

GRID LINE

### ELECTRICAL LEGEND:

L/LL LIGHT - LED LIGHT

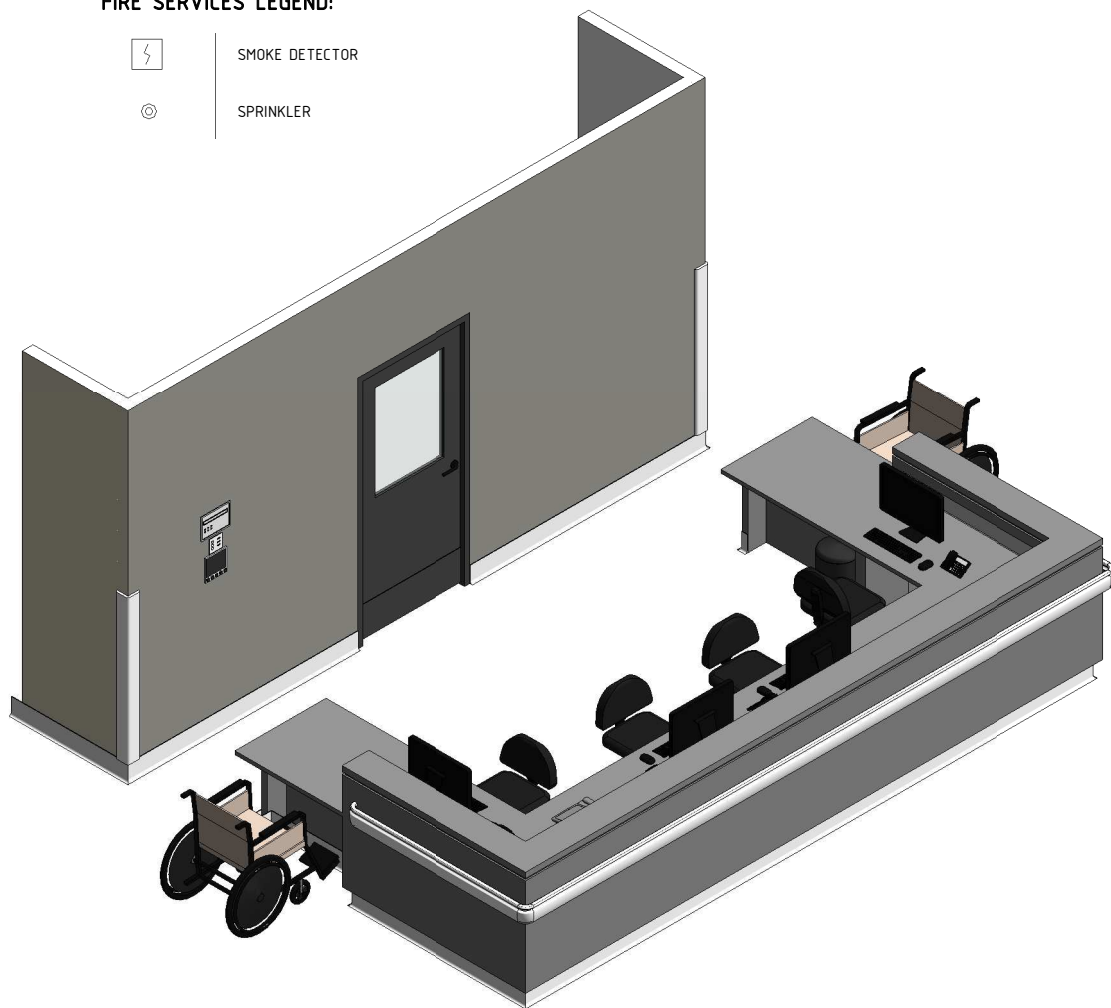
### MECHANICAL LEGEND:

SUPPLY AIR GRILLE

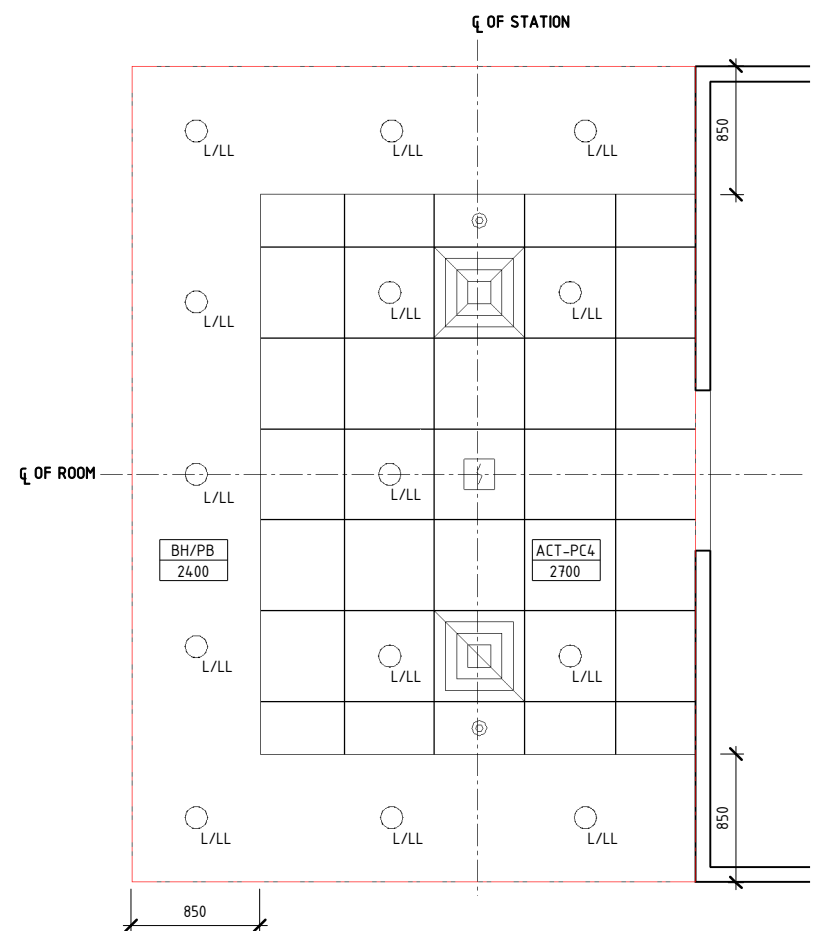
RETURN AIR GRILLE

### FIRE SERVICES LEGEND:

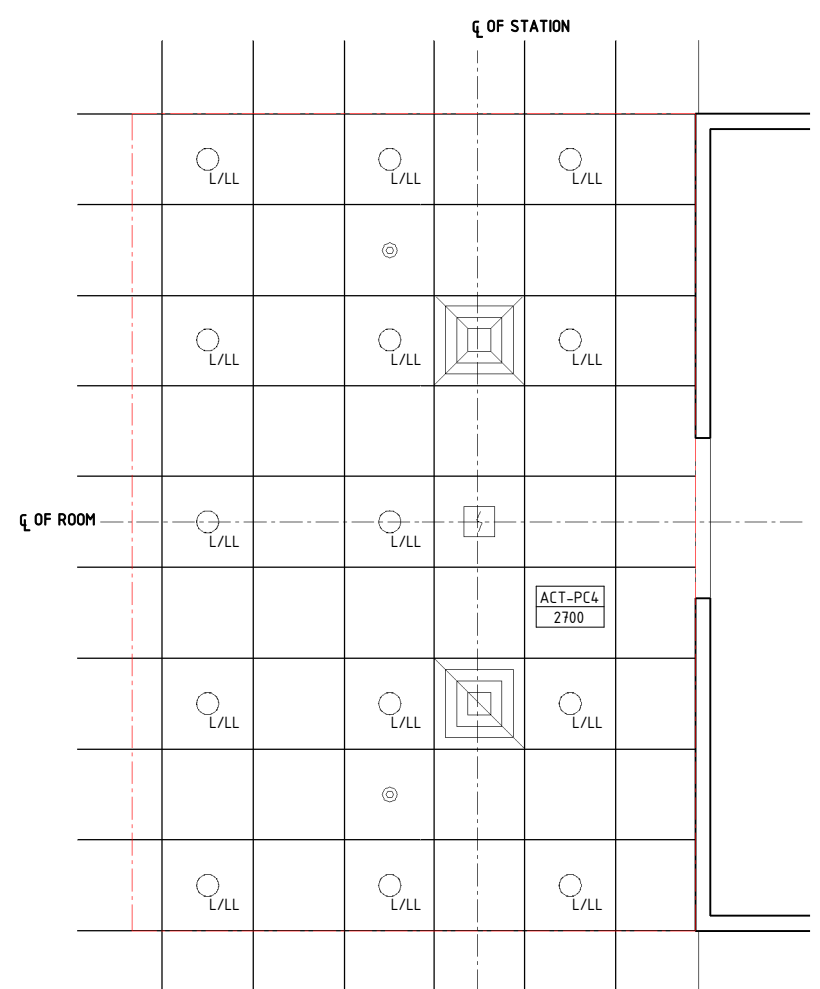
SMOKE DETECTOR  
SPRINKLER



ISOMETRIC VIEW



REFLECTED CEILING PLAN WITH BULKHEAD



REFLECTED CEILING PLAN WITHOUT BULKHEAD

REV	DESCRIPTION	DATE	BY	REV	DESCRIPTION	DATE	BY	COMPATIBILITY				
1	FIRST ISSUE	24.10.10	LL	4	GENERAL REVISION	27.01.23	AM	iHFG				
2	GENERAL REVISION	30.08.11	SK									
3	GENERAL REVISION	31.10.12	KC									
								DESIGNED	APPROVED	DATE	SCALE(S)	SHEET
								AM	SA	27.01.23	1 : 50	3 OF 3
								REVIT FILE NAME		PAPER DRAWING ID		ISSUE
								sstn-20-i		sstn-20-i-3		4