

iHFG Standard Components

Room Layout Sheet

Room Name **Treatment Room - Paediatrics**

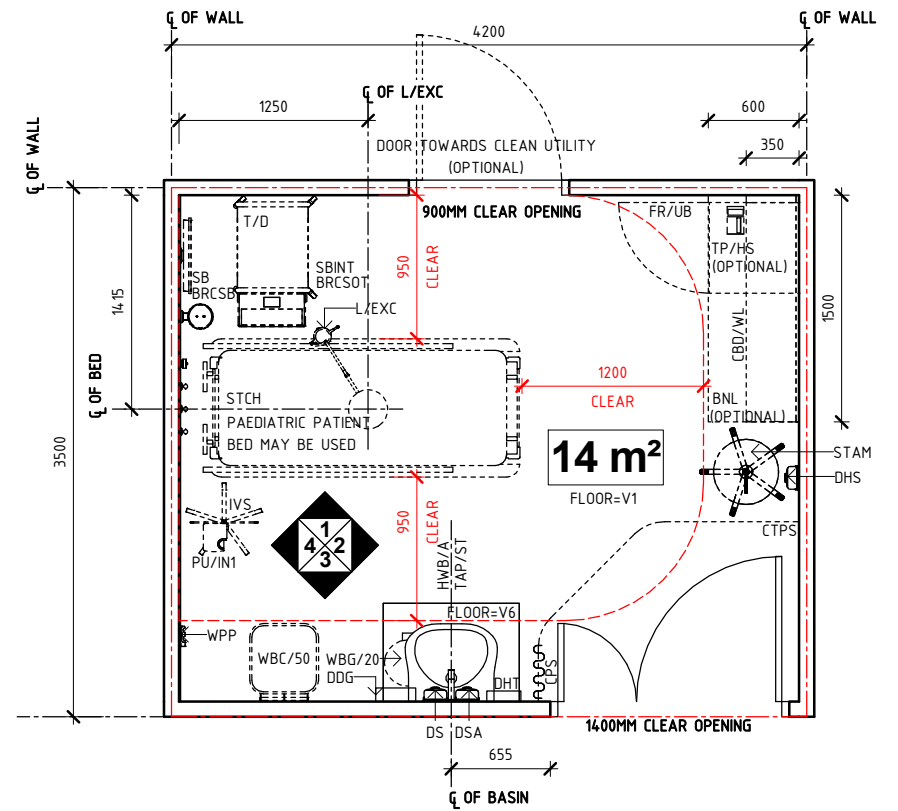
RLS Room Code

trmt-p-i

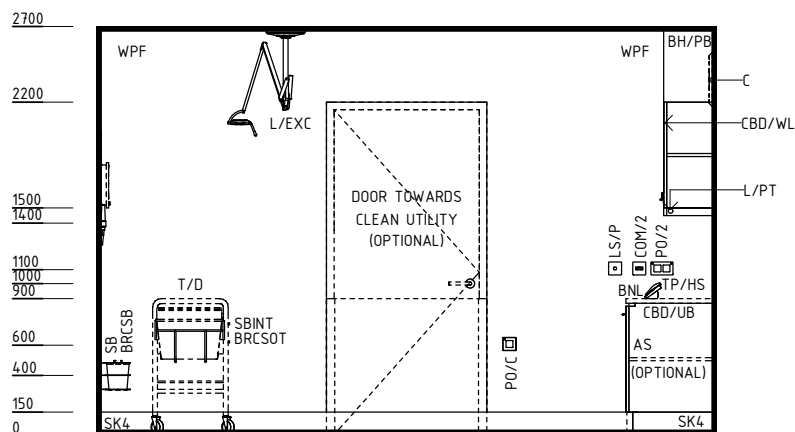
RDS Room Code

trmt-p-i

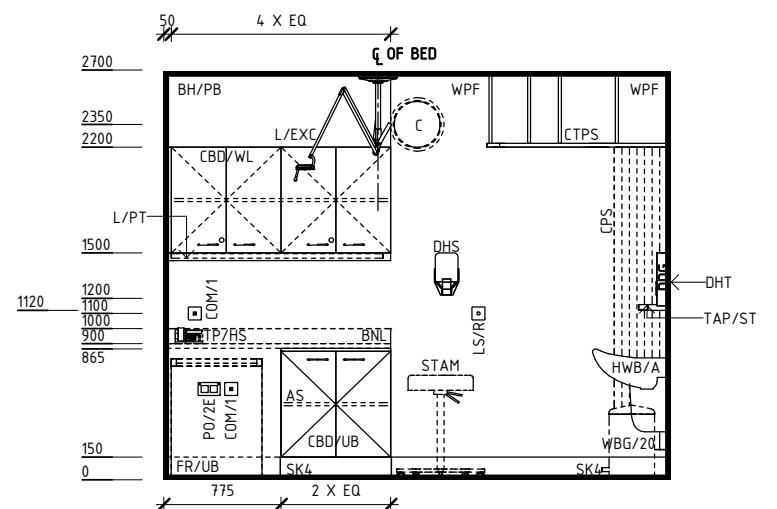
AS	ADJUSTABLE SHELF	SBINT	SHARPS BIN - ON TROLLEY
BH/PB	BULKHEAD - PLASTERBOARD, PAINT FINISH	SBK	SPLASHBACK
BNL	BENCH - LAMINATE	SK4	FLOOR VINYL COVED SKIRTING
BRCPM	BRACKET - PATIENT MONITOR	SP	SERVICES PANEL
BRCBS	BRACKET - SUCTION BOTTLE	STAM	STOOL - ADJUSTABLE, MOBILE
BRCST	BRACKET - SHARPS ON TROLLEY	STCH	STRETCHER
C	CLOCK	T/D	TROLLEY - DRESSING
CBD/UB	CUPBOARD - UNDER BENCH	TAP/ST	TAPWARE - SENSOR TAP
CBD/WL	CUPBOARD - WALL MOUNTED, LOCKABLE	TP/HS	TELEPHONE - HANDSET, STANDARD
COM/1	COMMUNICATION OUTLET - SINGLE	V1	VINYL FLOORING, STANDARD SLIP RESISTANT
COM/2	COMMUNICATION OUTLET - DOUBLE	V6	VINYL FLOORING, NON SLIP - TEXTURED
CPS	CURTAIN - PRIVACY SCREEN	WBC/50	WASTE BIN - CLINICAL, 50 LITRE
CTPS	CURTAIN TRACK - PRIVACY SCREEN	WBG/20	WASTE BIN - GENERAL, 20 LITRE
DDG	DISPENSER - DISPOSABLE GLOVES	WPF	WALL PAINT FINISH
DFP	DOOR AND DOOR FRAME PROTECTION	WPP	WALL PROTECTION PANEL
DGS/WM	DIAGNOSTIC SET - WALL MOUNTED		
DHS	DISPENSER - HAND SANITISER		
DHT	DISPENSER - PAPER HAND TOWEL		
DS	DISPENSER - SOAP		
DSA	DISPENSER - SOAP, ANTISEPTIC		
EC	EMERGENCY CALL		
FR/UB	FRIDGE - UNDER BENCH		
HWB/A	HAND WASH BASIN - TYPE 'A'		
IVS	IV STAND - MOBILE		
L/EXC	LIGHT - EXAMINATION, CEILING MOUNTED		
L/PT	LIGHT - PELMET TASK LIGHT		
LS/EL	LIGHT SWITCH - EXAMINATION LIGHT		
LS/P	LIGHT SWITCH - PELMET TASK LIGHT		
LS/R	LIGHT SWITCH - ROOM		
MA	MEDICAL AIR		
MON/C	MONITOR - CARDIAC		
O2	OXYGEN		
OP	OBSERVATION PANEL		
PC	PATIENT CALL		
PCH	PATIENT CALL HANDSET		
PO/1	POWER OUTLET - SINGLE		
PO/1E	POWER OUTLET - EMERGENCY, SINGLE		
PO/2	POWER OUTLET - DOUBLE		
PO/2E	POWER OUTLET - EMERGENCY, DOUBLE		
PO/C	POWER OUTLET - CLEANER'S		
PU/IN1	PUMP - INFUSION, SINGLE		
S	SUCTION		
SAC	STAFF ASSIST CALL		
SB	SUCTION BOTTLE		



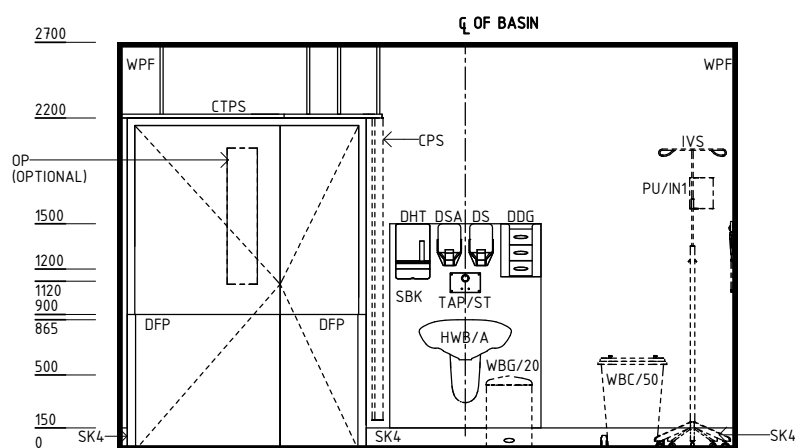
PLAN



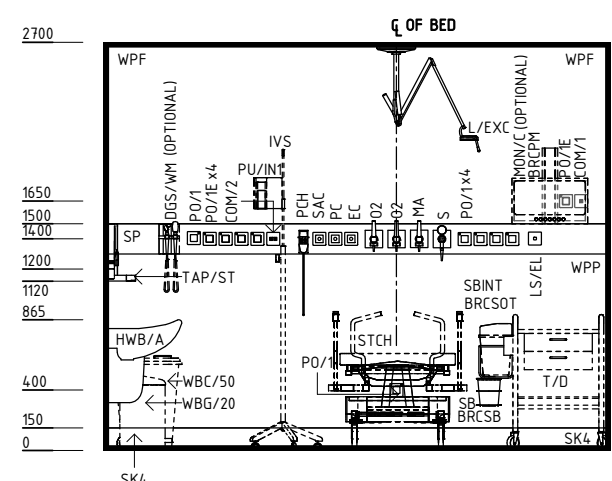
ELEVATION 1



ELEVATION 2



ELEVATION 3



ELEVATION 4

REV	DESCRIPTION	DATE	BY	REV	DESCRIPTION	DATE	BY	COMPATIBILITY
1	FIRST ISSUE	24.04.10	LL	4	GENERAL REVISION	22.08.22	AK	
2	GENERAL REVISION	30.08.11	SK					
3	GENERAL REVISION	31.10.12	CT					

DESIGNED	APPROVED	DATE	SCALE(S)	SHEET
AK	RH	22.08.22	1 : 50	1 OF 3
REVIT FILE NAME		PAPER DRAWING ID		ISSUE
trmt-p-i		trmt-p-i-1		4

iHFG Standard Components

Room Layout Sheet

RLS Room Code

trmt-p-i

RDS Room Code

trmt-p-i

Room Name

Treatment Room - Paediatrics

GENERAL NOTES:

THIS DRAWING TO BE READ IN CONJUNCTION WITH R.D.S. (ROOM DATA SHEETS) WHICH TAKES PRECEDENCE.

ALL SERVICES INDICATED ARE INDICATIVE AND SUBJECTED TO DETAILED PROJECT SPECIFIC ENGINEERING DESIGN.

CEILING LEGEND:

	CEILING TYPE CORNICIE TYPE
	HEIGHT ABOVE F.F.L.
	PLASTERBOARD BULKHEAD, PAINT FINISH
	PLASTERBOARD FLUSH SET CEILING, PAINT FINISH WITH POWDERCOAT ALUMINIUM CORNICIE, SHADOW LINE
	GRID LINE

ELECTRICAL LEGEND:

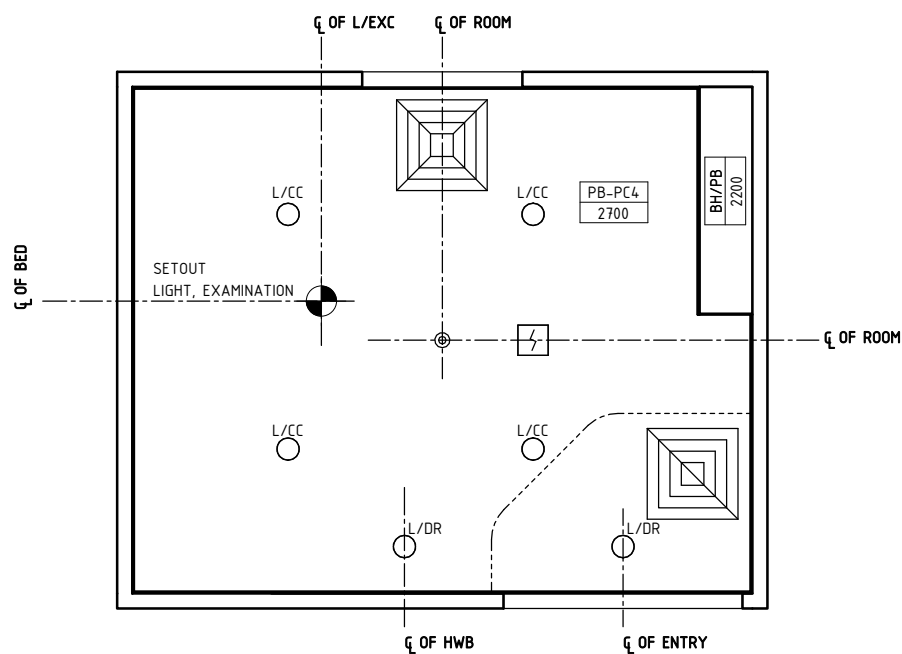
	LIGHT - COLOUR CORRECTED
	LIGHT - DOWNLIGHT, RECESSED

MECHANICAL LEGEND:

	SUPPLY AIR GRILLE
	RETURN AIR GRILLE

FIRE SERVICES LEGEND:

	SMOKE DETECTOR
	SPRINKLER



REFLECTED CEILING PLAN

REV	DESCRIPTION	DATE	BY	REV	DESCRIPTION	DATE	BY	COMPATIBILITY																				
1	FIRST ISSUE	24.04.10	LL	4	GENERAL REVISION	22.08.22	AK	iHFG																				
2	GENERAL REVISION	30.08.11	SK																									
3	GENERAL REVISION	31.10.12	CT																									
<table border="1"> <tr> <td>DESIGNED</td> <td>APPROVED</td> <td>DATE</td> <td>SCALE(S)</td> <td>SHEET</td> </tr> <tr> <td>AK</td> <td>RH</td> <td>22.08.22</td> <td>1 : 50</td> <td>2 OF 3</td> </tr> <tr> <td colspan="2">REVIT FILE NAME</td> <td colspan="2">PAPER DRAWING ID</td> <td>ISSUE</td> </tr> <tr> <td colspan="2">trmt-p-i</td> <td colspan="2">trmt-p-i-2</td> <td>4</td> </tr> </table>								DESIGNED	APPROVED	DATE	SCALE(S)	SHEET	AK	RH	22.08.22	1 : 50	2 OF 3	REVIT FILE NAME		PAPER DRAWING ID		ISSUE	trmt-p-i		trmt-p-i-2		4	
DESIGNED	APPROVED	DATE	SCALE(S)	SHEET																								
AK	RH	22.08.22	1 : 50	2 OF 3																								
REVIT FILE NAME		PAPER DRAWING ID		ISSUE																								
trmt-p-i		trmt-p-i-2		4																								

iHFG Standard Components

Room Layout Sheet

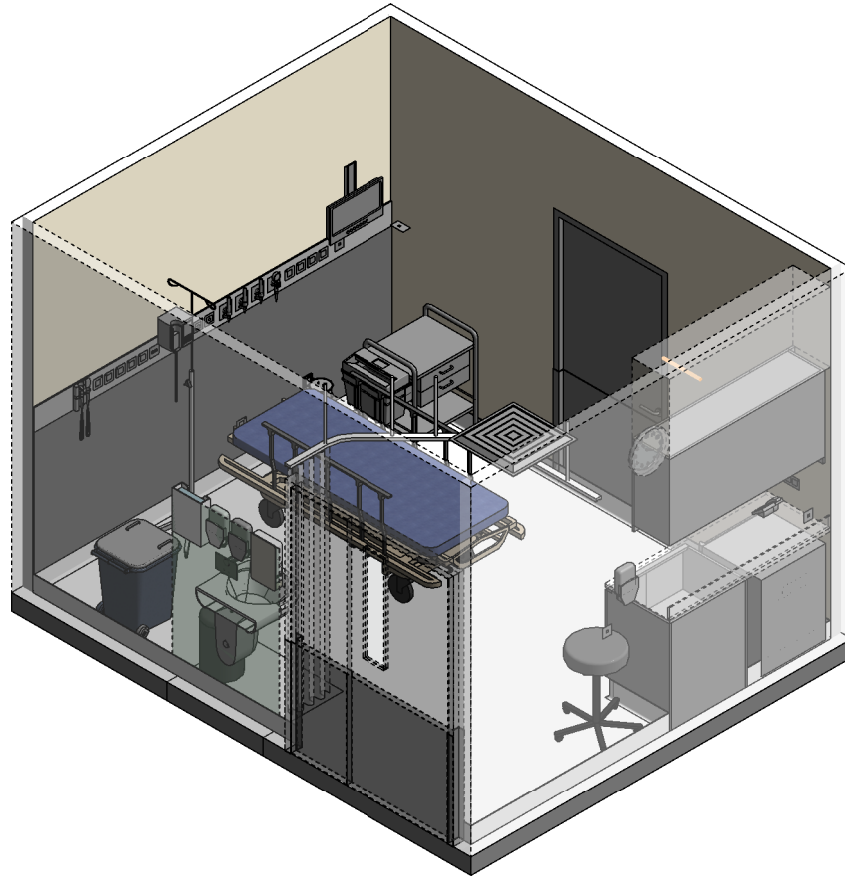
Room Name | Treatment Room - Paediatrics

RLS Room Code

trmt-p-i

RDS Room Code




trmt-p-i



ISOMETRIC VIEW 01



ISOMETRIC VIEW 02

REV	DESCRIPTION	DATE	BY	REV	DESCRIPTION	DATE	BY	COMPATIBILITY																				
1	FIRST ISSUE	24.04.10	LL	4	GENERAL REVISION	22.08.22	AK																					
2	GENERAL REVISION	30.08.11	SK																									
3	GENERAL REVISION	31.10.12	CT																									
 International Health Facility Guidelines								<table border="1"> <tr> <th>DESIGNED</th> <th>APPROVED</th> <th>DATE</th> <th>SCALE(S)</th> <th>SHEET</th> </tr> <tr> <td>AK</td> <td>RH</td> <td>22.08.22</td> <td></td> <td>3 OF 3</td> </tr> <tr> <th colspan="2">REVIT FILE NAME</th> <th colspan="2">PAPER DRAWING ID</th> <th>ISSUE</th> </tr> <tr> <td colspan="2">trmt-p-i</td> <td colspan="2">trmt-p-i-3</td> <td>4</td> </tr> </table>	DESIGNED	APPROVED	DATE	SCALE(S)	SHEET	AK	RH	22.08.22		3 OF 3	REVIT FILE NAME		PAPER DRAWING ID		ISSUE	trmt-p-i		trmt-p-i-3		4
DESIGNED	APPROVED	DATE	SCALE(S)	SHEET																								
AK	RH	22.08.22		3 OF 3																								
REVIT FILE NAME		PAPER DRAWING ID		ISSUE																								
trmt-p-i		trmt-p-i-3		4																								
<small>International Health Facility Guidelines at: www.healthdesign.com.au/iHFG Editable version of Standard Components on Health Facility Briefing System (HFBS) at: www.healthdesign.com.au ©TAHPI</small>																												

This document is for advisory purpose only